



Oregon Department of Forestry 2024 Fire Season

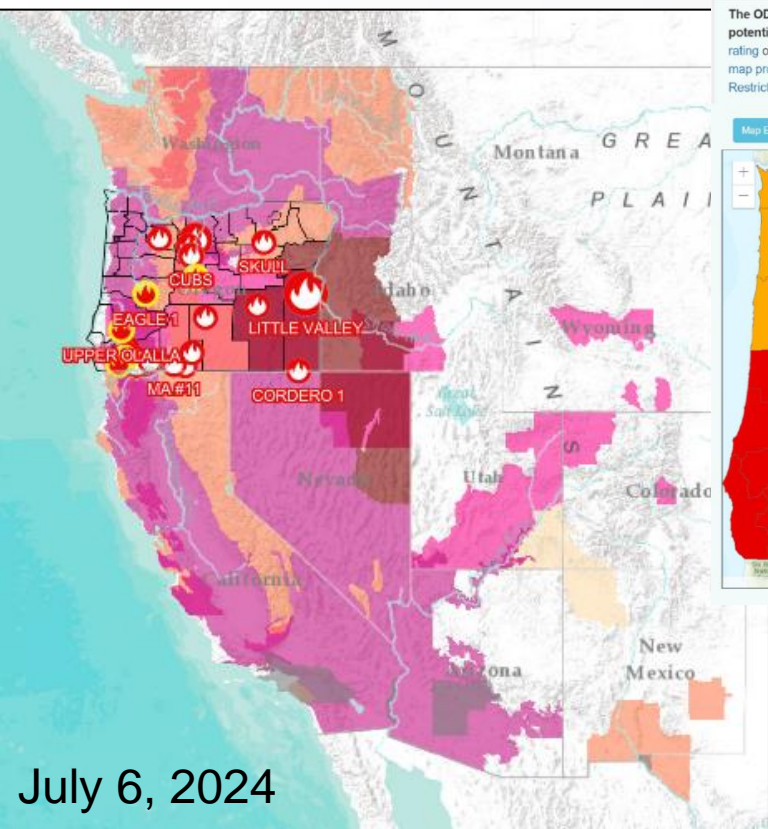
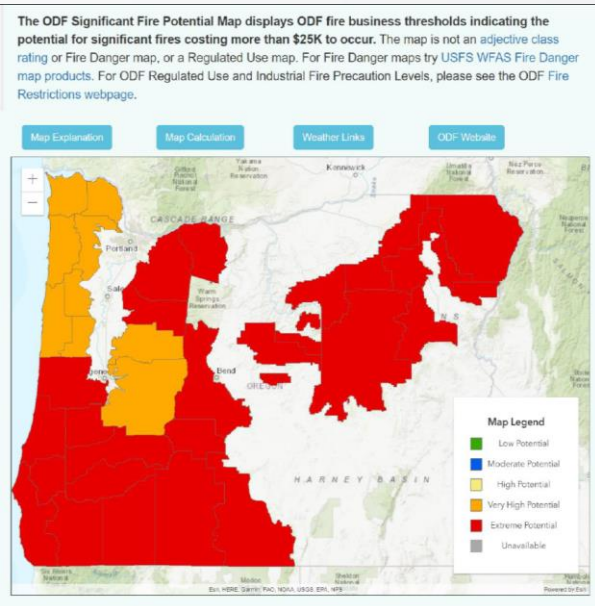
Deputy Chief
Tim Holschbach



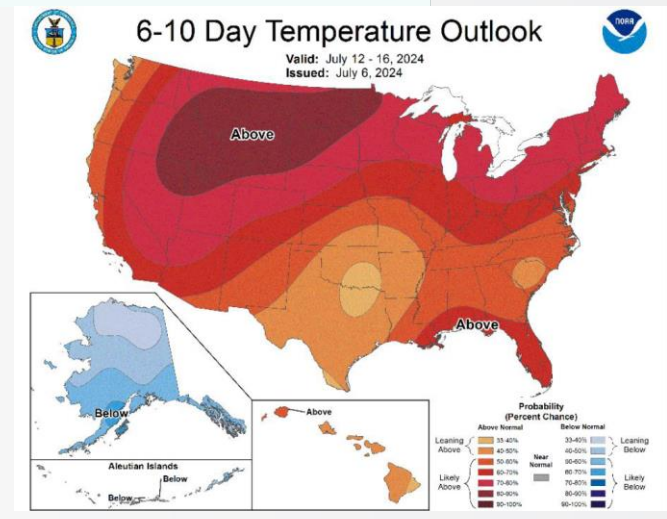
July 12, 2024

Characteristic of the season:

early and continuous heat



July 6, 2024

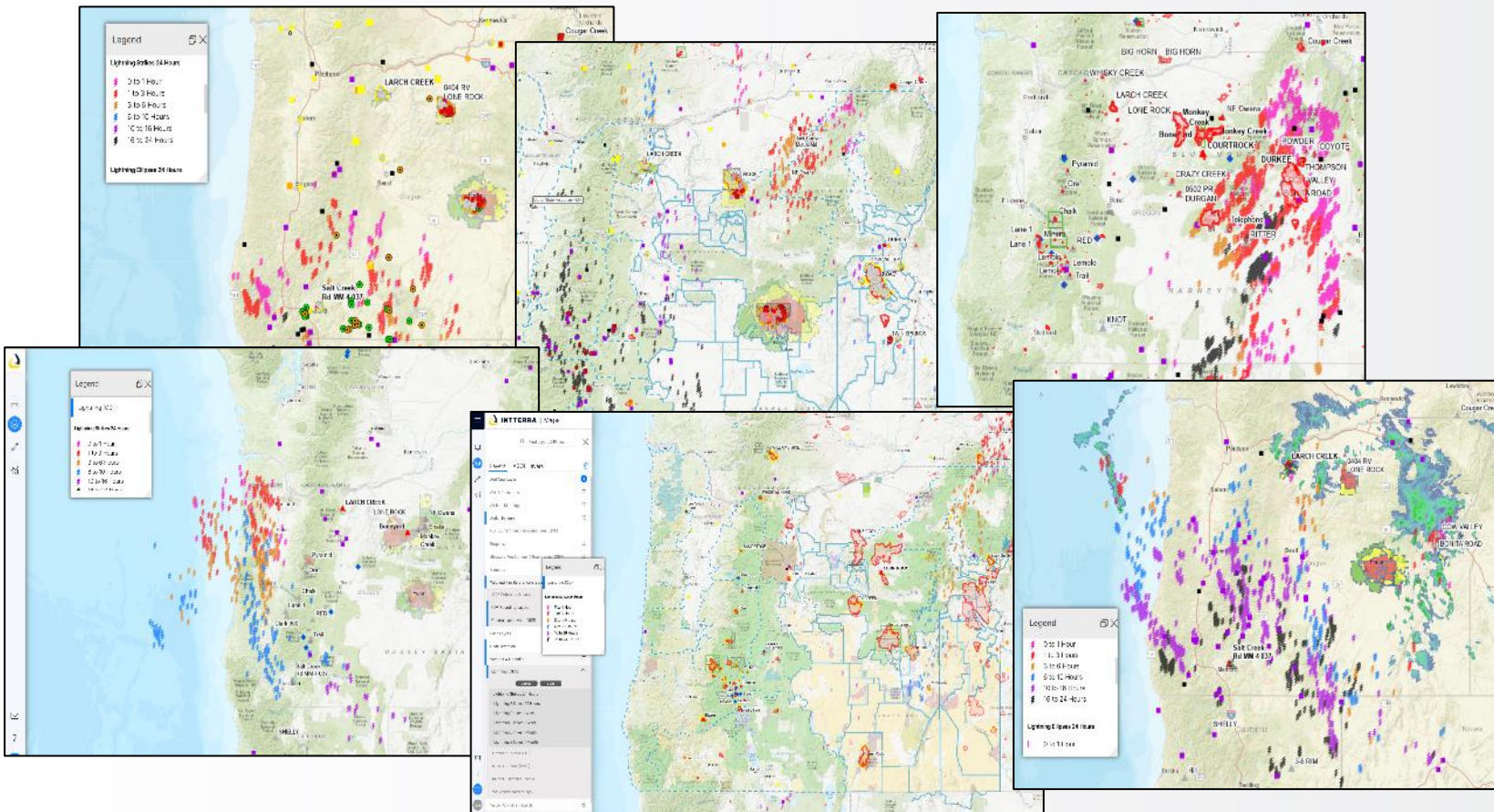


During July 2-10, high pressure targeted the PNW with a heat wave, and again from July 16, pulses of heat desiccated fuels across Oregon. Fire Danger indices reached above the 97th percentile, warranting fuels and fire behavior advisories.



Characteristic of the season:

dry lightning



Dry lightning struck nearly all of Oregon in multiple events after heat events: July 16-17, July 21-22, July 24-25, Aug 4-5, Aug 13-14, and even Sept 1-2. At least 8,000 strikes were recorded during these multiple events which ignited hundreds of fires.

Several large human-caused fires were already on the landscape by the first strikes, and 6 fires in 2024 grew into megafires ($\geq 100K$ acres).



2024 Oregon Wildfires

10/07/2024
Year to Date

- Human Caused Fires
- Lightning Fires
- Under Investigation
- Perimeters

1.9+ Million Acres Burned

6 Megafires (>100K acres)

Oregon's 10-Year Annual Average: 621,044 Acres Burned

- Land Management
- State
 - Private
 - BLM
 - USFS
 - NPS
 - FWS
 - BIA, Other Fed & Other

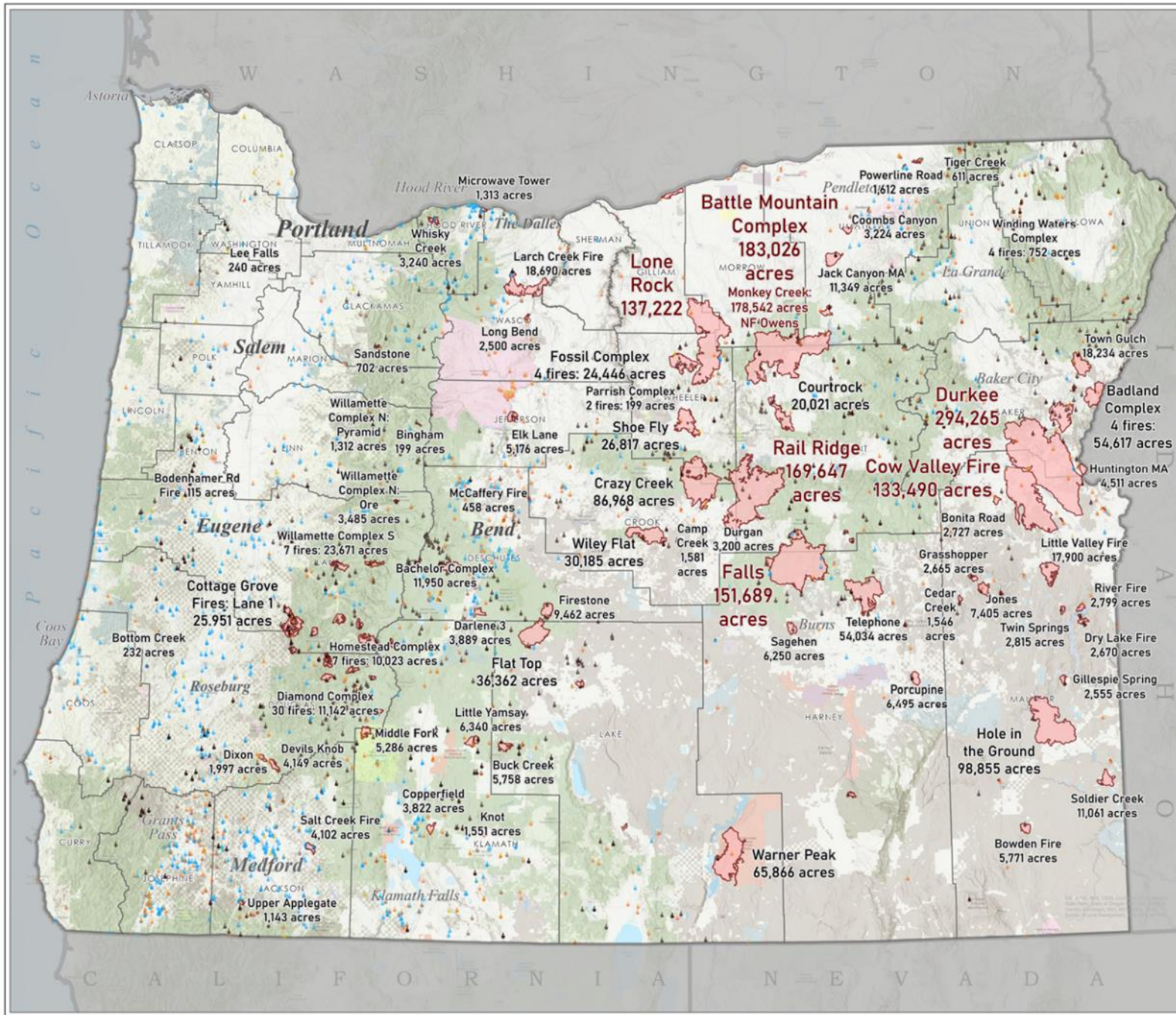


Statewide Fires Map

Year-to-date
10/07/2024

12 FEMA FMAGs:

Darlene 3, Larch Creek, Lone Rock, Falls Fire, Battle Mountain Complex (Monkey Creek, Snake, NF Owens), Boneyard Fire & Courtrock Fire, Durkee, MM 132, Elk Lane, Lee Falls Fire, Copperfield, Rail Ridge





ODF Fire Statistics

Oct 28, 2024

2024 Year To Date		
	Fires	Acres
Lightning	238	212,915
Human (and UI)	767	93,101
Total	1,005	306,016
10-Year Average (2014-2023 Year To Date)		
Lightning	234	42,096
Human	762	68,793
Total	996	110,889

94%

fires kept at 10 acres or less to date in 2024

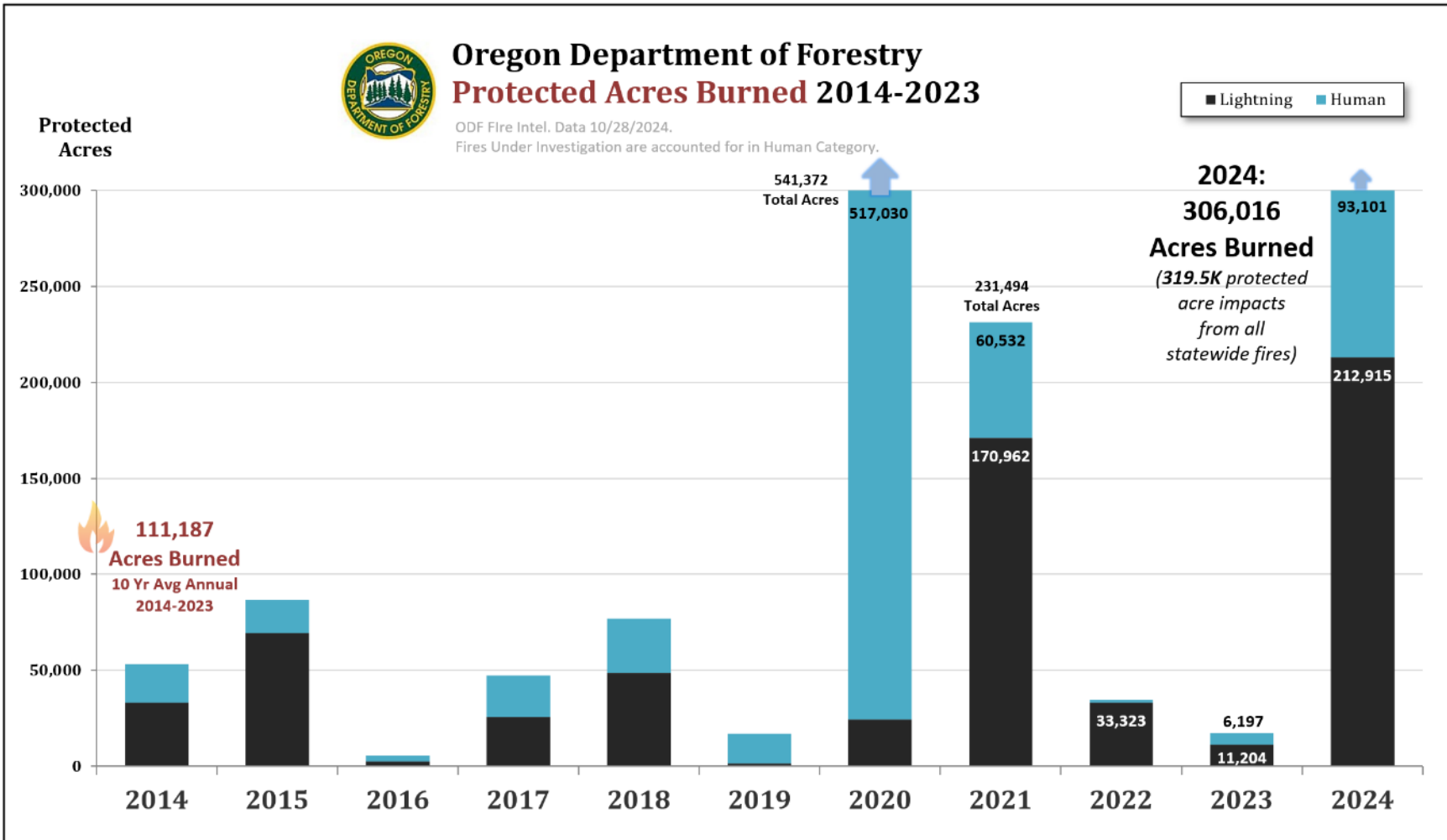
319,540 impact acres on ODF-protection from all statewide fires

2024 vs 2023 YTD:
306,016 vs 17,398 acres
~17.5 times greater than 2023

2024 vs 10-year average YTD:
306,016 vs 110,889 acres
~2.8 times greater than 10-year average



ODF Recent Fire History: Acres Burned



On average, 47% of Oregon wildfires start within ODF Districts, but only 18% of the state's acres burned are on ODF protected lands.

In 2024, ODF had 45% of statewide fires, and only 16% of statewide acres burned.