

# CPI's Wildfire Prevention Methods



Mike Terry: CPI Operations Manager

&

Jeffery Carlson: CPI Safety & Compliance Manager

# Wildfire Prevention: Discussion Topics

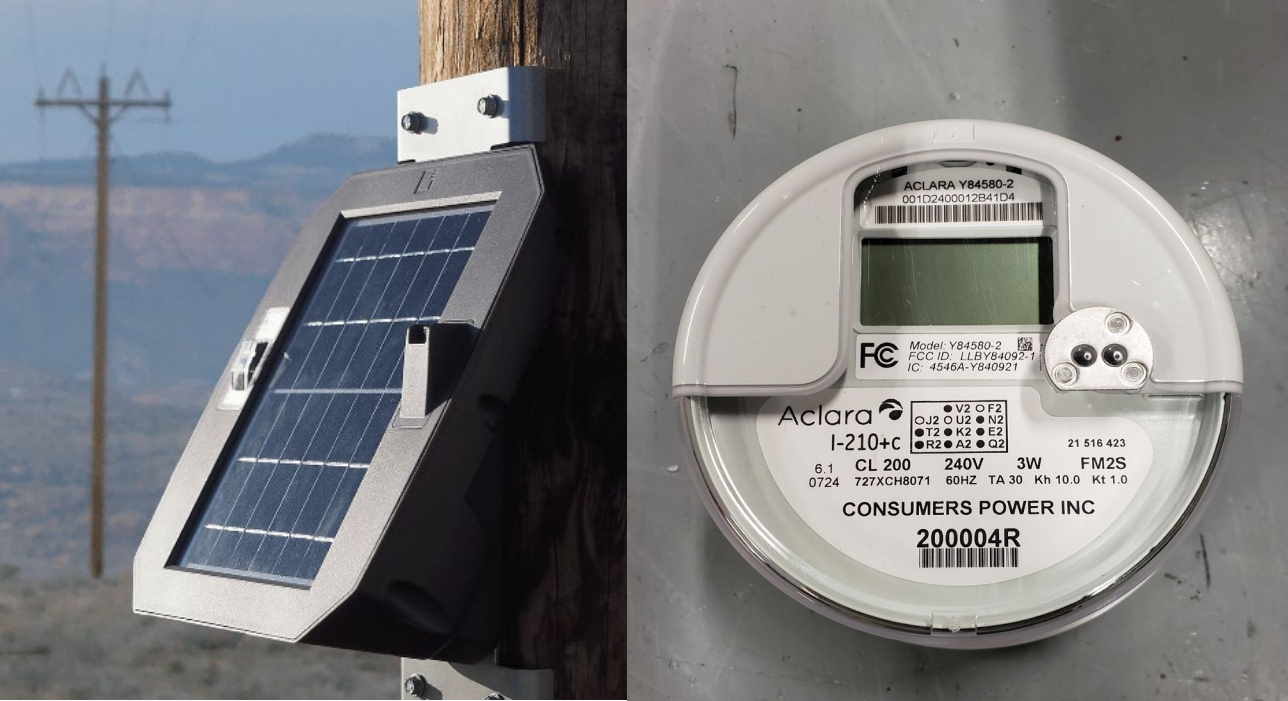
- System Hardening
- System Intelligence
- Environmental Intelligence
- System Settings
  - Escalating Fire Threat
  - De-escalating Fire Threat
- Future Mitigation Projects



# System Hardening

- ROW Clearing Efforts
- ODF Industrial Activities Fire Waiver
- Overhead Fire Mitigation Standard
  - Covered wire
  - Vise top insulators
  - Composite crossarms
  - Composite or steel poles
- Undergrounding
  - Targeted annual projects
  - Working w/Timber Companies to share costs

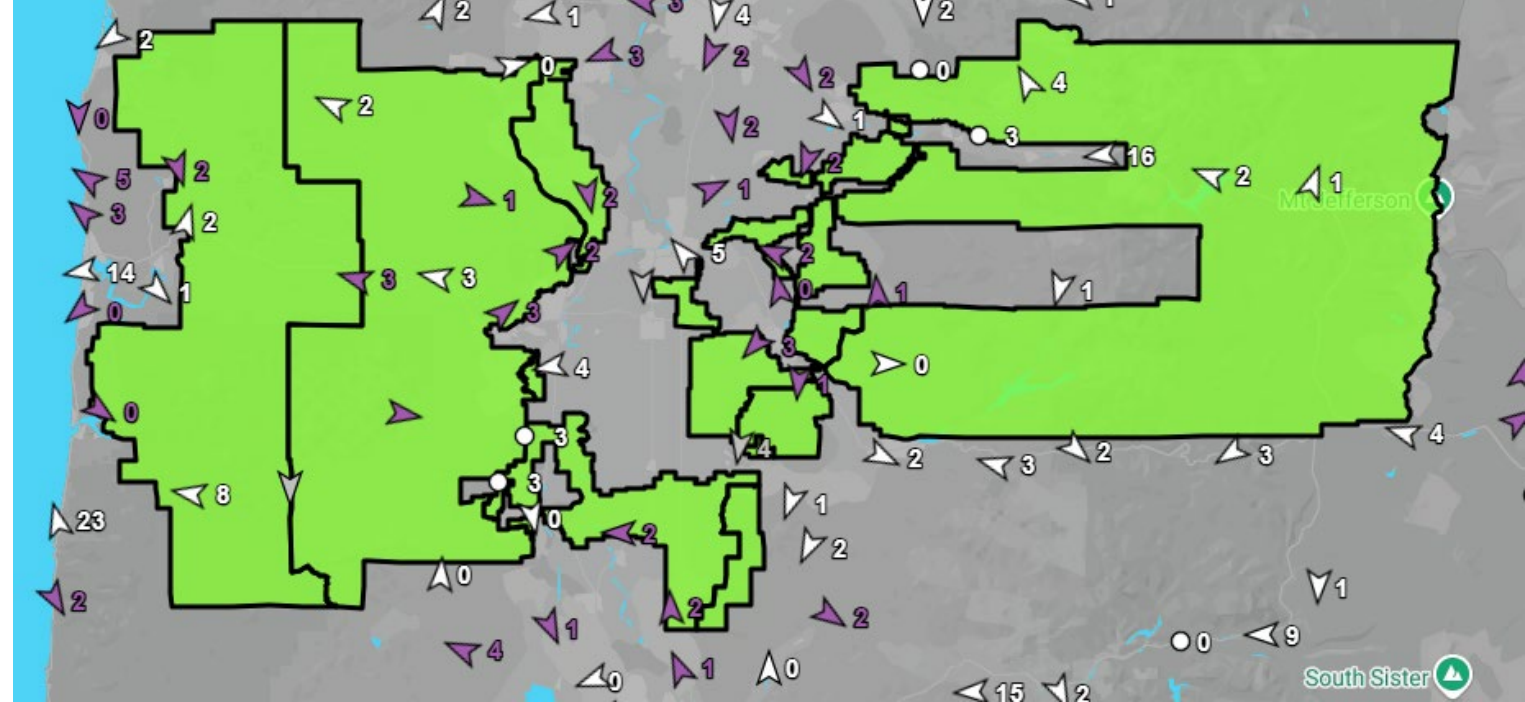




# System Intelligence

- Gridware Fault Detectors
- SEL Fault Indicators
- Aclara
  - Meter System
  - Fault Indicators
- Constantly Expanding SCADA Visibility





# Environmental Intelligence

- CPI uses public and private data to monitor Fire Weather threats.
  - 10 Tempest Weather Stations
  - TempestOne/DSAT dashboard
  - NWS/NOAA
  - ODOT

# System Settings: Escalating Fire Threat

- Red Flag Warnings are less important since 2023.
  - Still rely on published Red Flag criteria.
- CPI leans heavily on ODF's wildfire season & IFPL declarations.
- Settings scale with fire threat
  - Baseline (IFPL 2 or higher)= Non-reclose
    - Distribution tap level. Outages are smaller/shorter.
  - Enhanced (Red Flag Conditions)= Hotline tag
    - Substation level. Outages are larger/longer.
- During times of elevated fire threat.
  - Crews carry required fire tools throughout fire season.
  - Crews bring Mini-excavators to jobs even if not needed for work.
  - Crews bring fire wagon to jobs in danger areas.



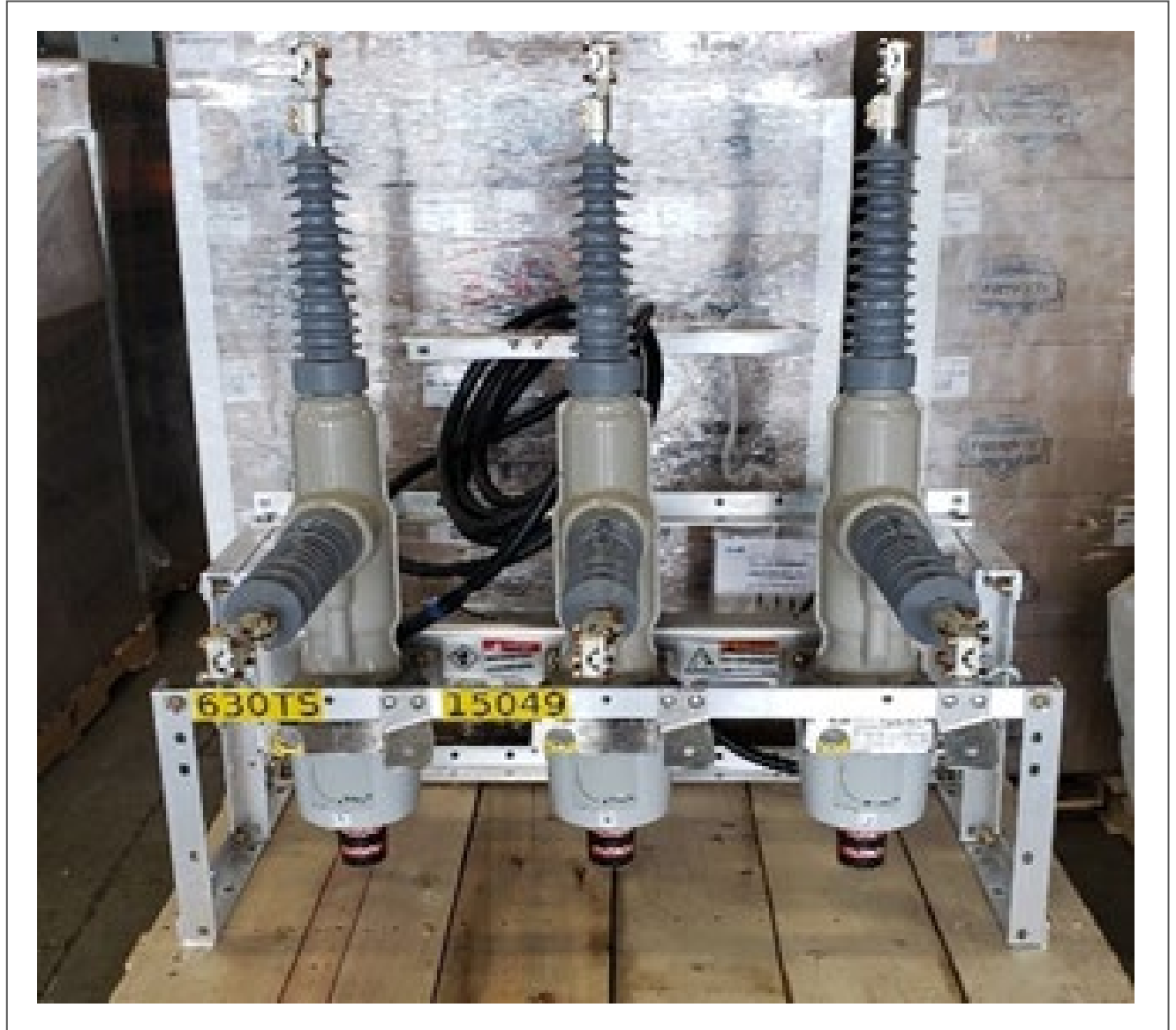
# System Settings: Outage Restoration & De-Escalating Fire Threat

- If an outage occurs during non-reclose or hot-line tag.
  - CPI patrols all affected parts of the circuit before re-energizing.
  - Patrols conducted from roadway, on foot, and with drones.
- In the fall as fire season winds down.
  - No Red Flag Criteria met= no more hot-line tag days.
  - IFPL drops to 1= return to normal recloser settings when confident we won't return to IFPL 2.
- ODF declares fire season over.
  - Crews remove fire tools from vehicles.



# Future Mitigation Projects

- SCADA Controlled Reclosers
  - FEMA HMGP= 300 new reclosers
- GRIP= Santiam Canyon Undergrounding
- Fiber to all Substations & In-Field Reclosers
- Additional Weather Sensors
- Additional Drones





CPI's Wildfire Prevention Methods: Finished!

