

LAKE COUNTY ALL LANDS RESTORATION INITIATIVE



Photos credit: LCALRI



Partnership Overview

The Lake County All Lands Restoration Initiative (LCALRI) will help create a healthy, resilient, and functional forest landscape maintained with fire as an ecological process, while mitigating the threat of high severity wildfire to dry forests, fish and wildlife habitat, water quality, and the surrounding human communities. As stated in the 2019 Governor’s Council on Wildfire Response Report, strategic treatments across 40% of a given landscape can significantly alter fire behavior for positive benefit. The objective for the LCALRI is to thin approximately 40% of the 56,121 acres of high and moderate priority stands remaining for treatment

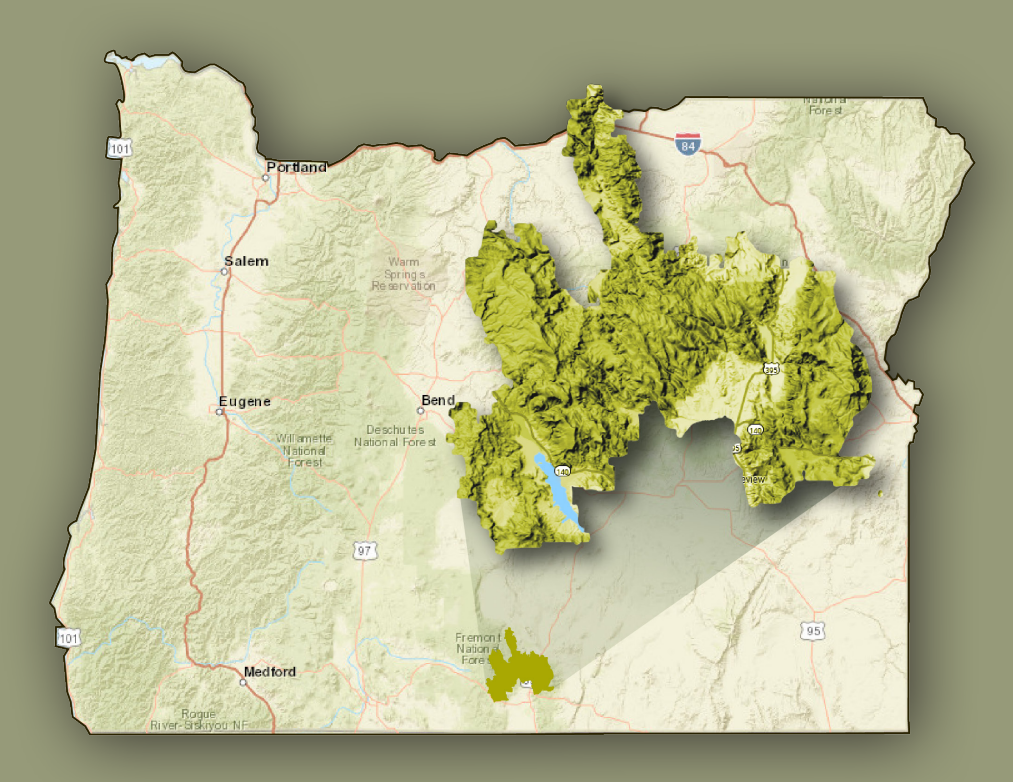
Goals by 2030:

- Restore dry forest landscape resiliency, forest health, hydrologic function, and wildlife habitat within ponderosa pine and mixed conifer habitats by re-establishing open and variable forest structure and reducing fuel loading within approximately 40% of the moderate and high priority stands.
- Restore healthy aspen, meadow, and shrub-steppe habitats by reducing encroaching conifers and juniper within approximately 40% of the high and moderate priority stands.
- Re-introduce low to moderate intensity fire as a key ecological process with first entry prescribed fire across public and private lands on 40% of the area identified for prescribed fire in the North Warner Project area.

In April 2024, the Klamath Lake Forest Health Partnership was awarded funding through the Oregon Watershed Enhancement Board (OWEB) Focused Investment Partnership (FIP) grant program. A FIP is an OWEB investment that addresses a Board-identified priority of significance to the state; achieves clear and measurable ecological outcomes; uses integrated and results – oriented approaches as identified through a strategic action plan; and is implemented by a high-performing partnership. Initiatives are eligible for up to six years of OWEB funding. For the first biennium, OWEB awarded \$4,000,000 to the Klamath Lake Forest Health Partnership. When combined with investments from 2024 to 2030, the anticipated total investment is approximately \$12,000,000.

Core Implementing Partners

- Klamath-Lake Forest Health Partnership
- Lake County Cooperative Weed Management Area
- Lake County Resources Initiative
- Lake County Umbrella Watershed Council
- Natural Resources Conservation Service
- Oregon Department of Fish & Wildlife
- Oregon Department of Forestry
- Oregon State University Extension
- The Nature Conservancy
- US Forest Service, Fremont-Winema National Forest
- University of Oregon



Ecological Outcomes

- Develop a short- and long-term strategy for prescribed fire to re-establish the historical frequency of fire
- Engage with private landowners to increase public knowledge of dry forest restoration principles and techniques
- Restore dry forest landscape resiliency by re-establishing open and variable forest structure and reducing fuel loading
- Restore healthy aspen, meadow, and shrub-steppe habitats by reducing encroaching conifers and juniper

Strategies

1. Prescribed fire
2. Strategic thinning
3. Promote native vegetation

Conservation Actions

- Re-introduce prescribed fire as a key ecological process
- Share knowledge, identify priority areas, and incorporate into existing actions. Work in cooperation with USFS and private lands; remaining areas within North Warner project, and stands within Thomas Creek project
- Implement treatments to reduce tree and fuel density

Near-term Ecological Outcomes

- Increased understanding of the role of prescribed fire in land management
- Increased diversity and abundance of understory vegetation

Longer-term Ecological Outcomes

- Enhanced resilience to impacts from extreme fire, drought, insects and disease
- Enhance habitat for Oregon Conservation Strategy species

