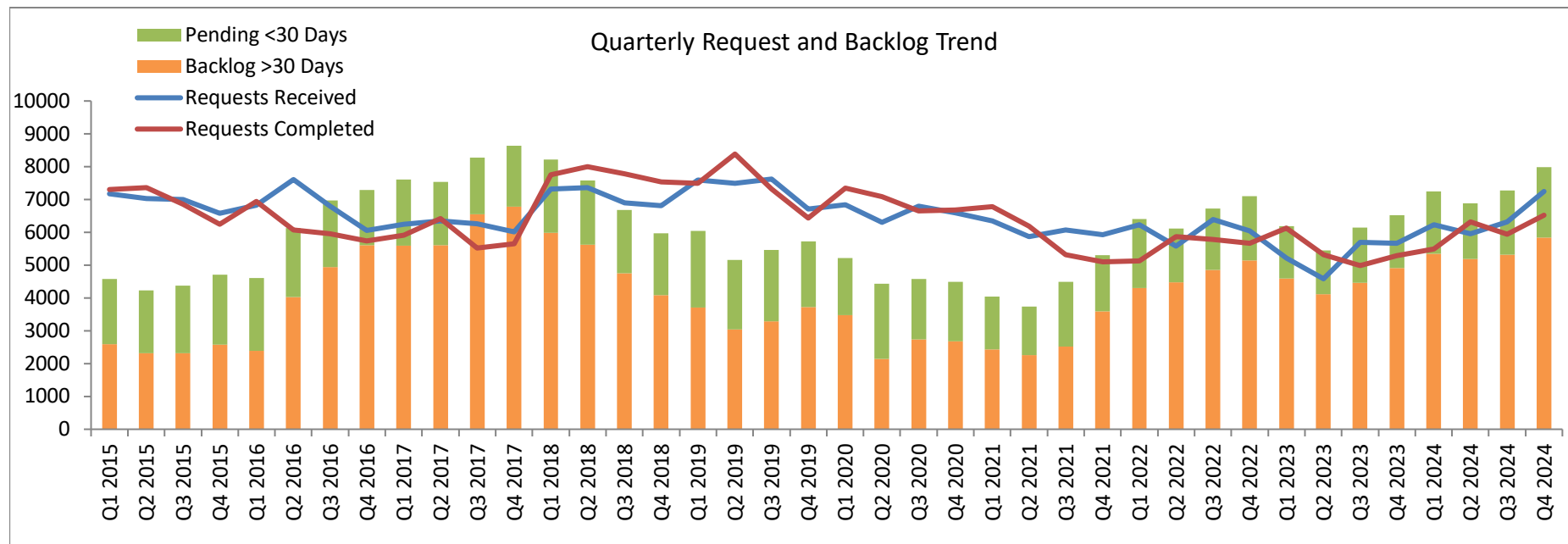
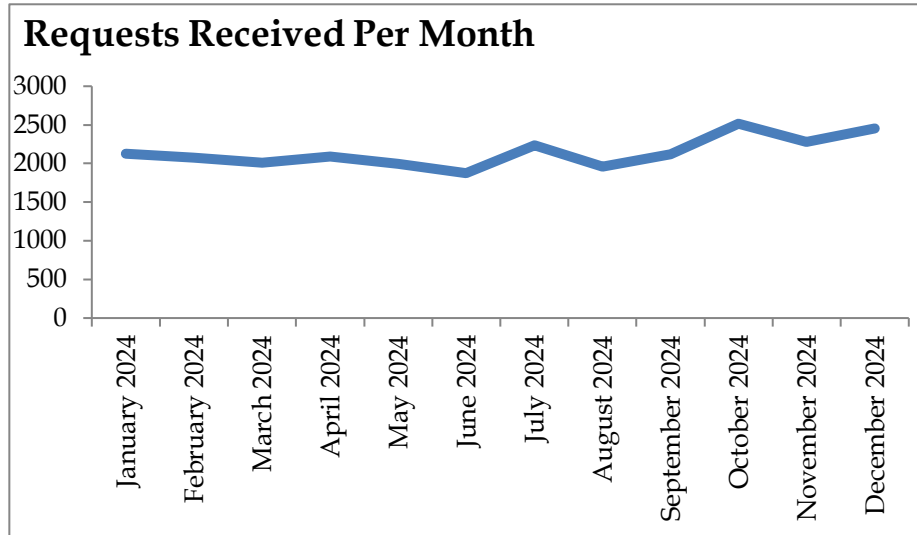
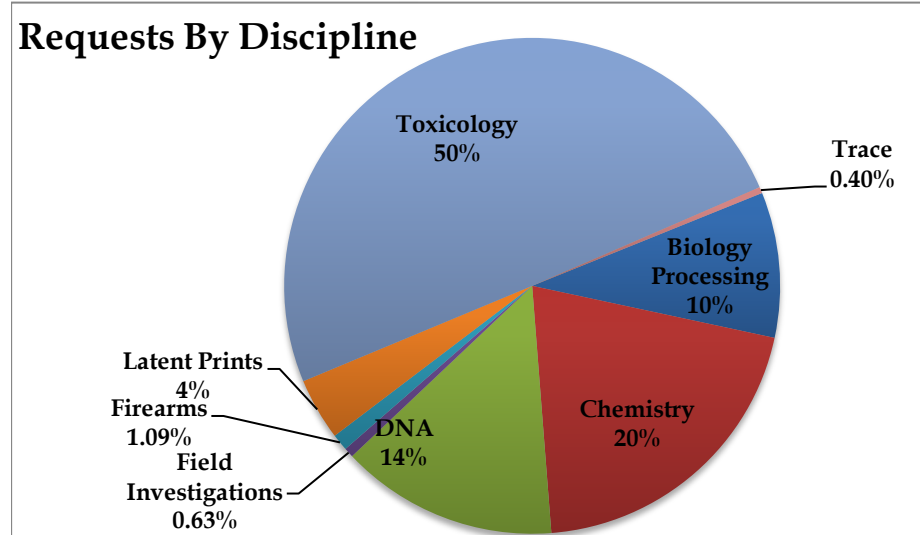
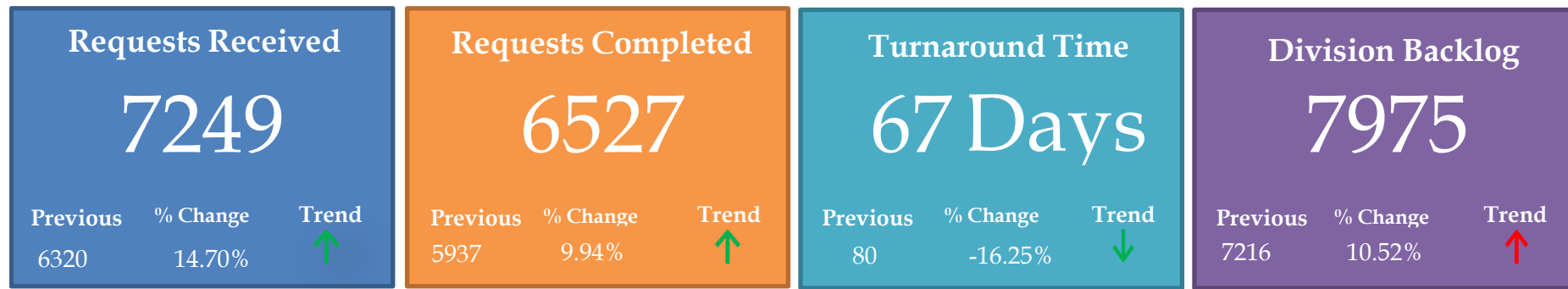


Forensic Division Summary

for Q4 2024

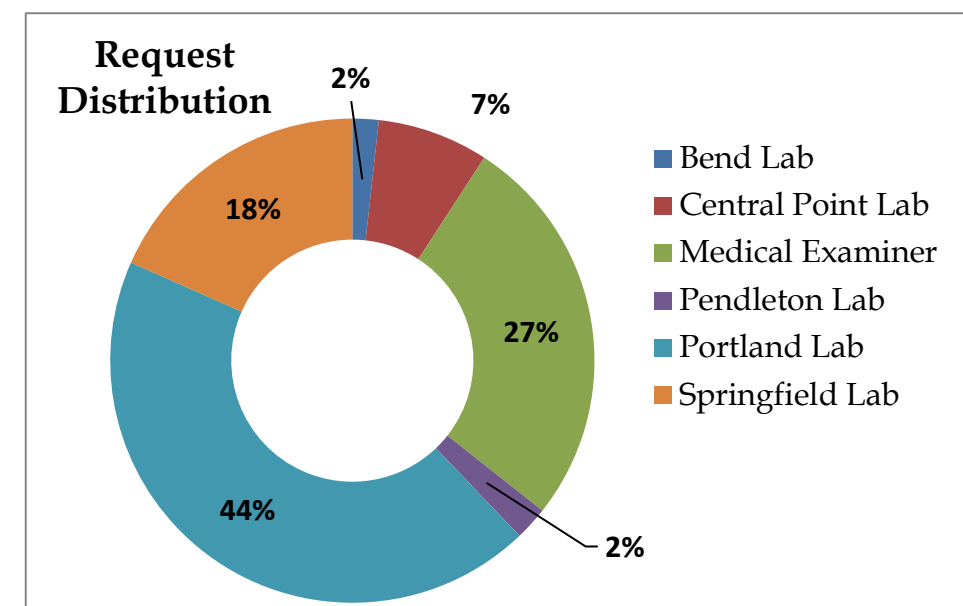


Laboratory Stats

Laboratory	New Requests Received	Requests Completed	Average Turnaround Time (Days)	Pending Requests
Bend Lab	127	113	127	191
Central Point Lab	538	226	59	571
Medical Examiner	1918	1608	45	1375
Pendleton Lab	162	64	131	331
Portland Lab	3173	2744	84	4820
Springfield Lab	1331	1772	54	687

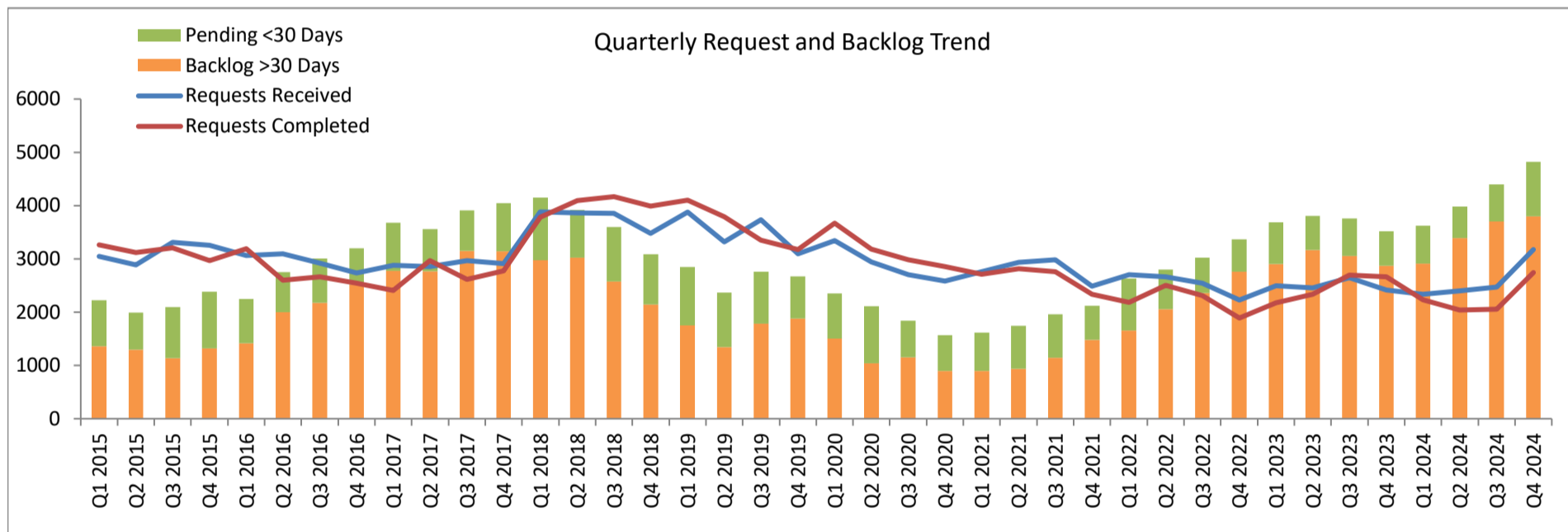
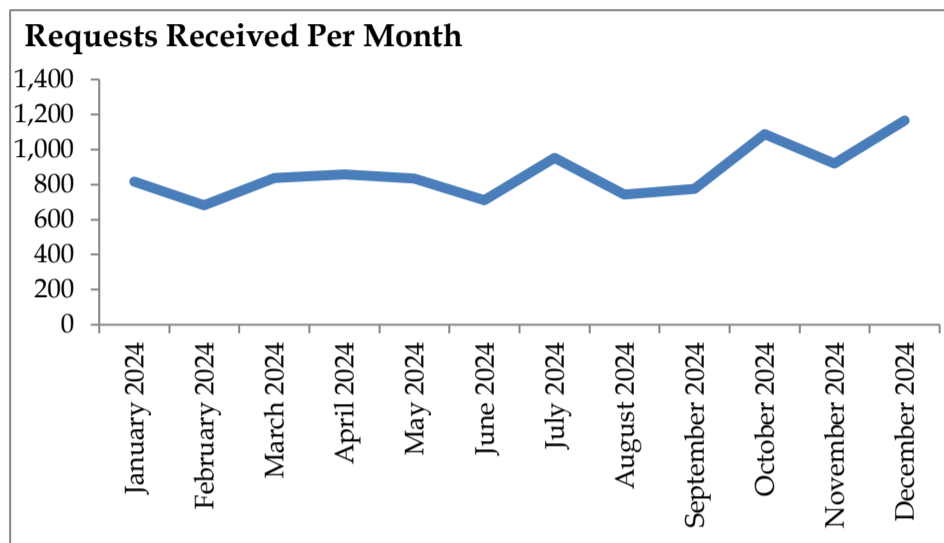
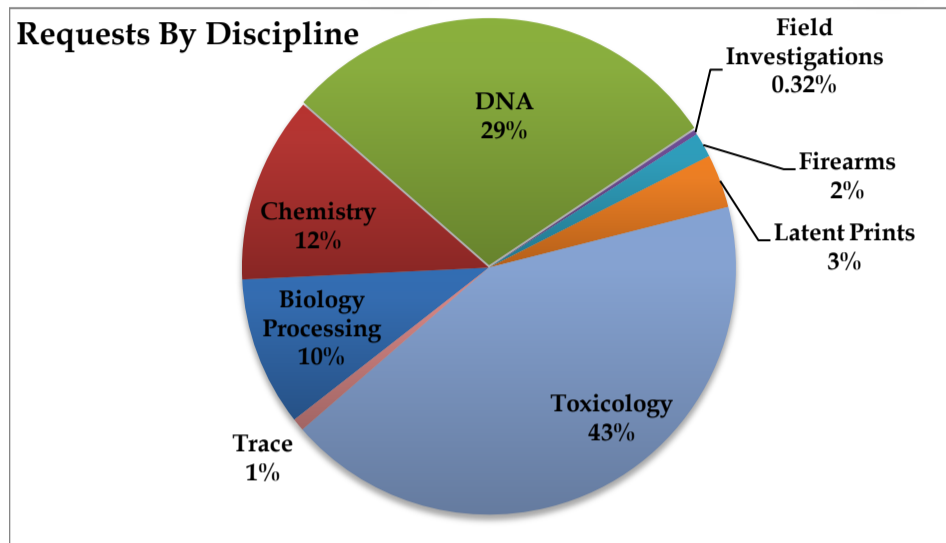
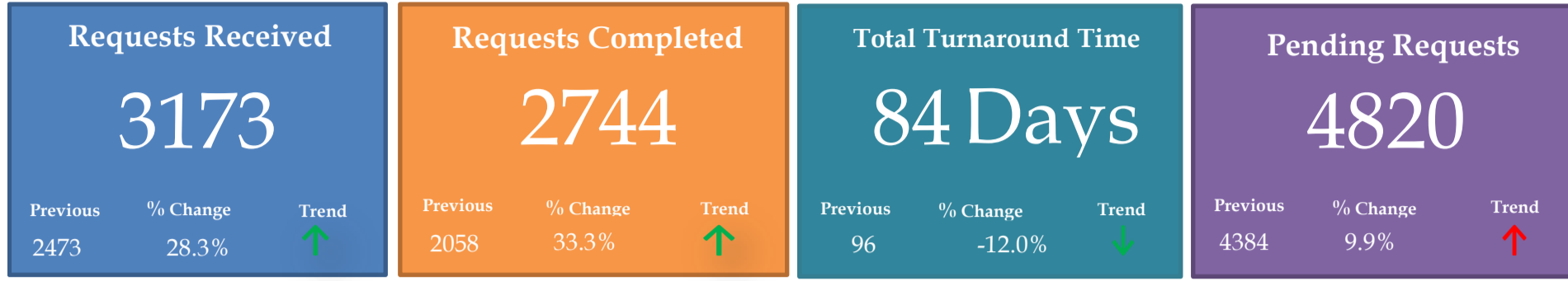
Discipline Stats

Discipline	New Requests Received	Requests Completed	Average Turnaround Time (Days)	Pending Requests
Arson	18	20	61	12
Biology Processing	617	643	40	307
Blood Alcohol	1	1	15	0
Blood Volatiles	1784	2434	39	408
Cannabis Determination	37	24	113	46
e-to-Case (Testing do not use)	0			1
CODIS Confirmation	97	97	0	0
Controlled Substances	1291	493	102	1969
DNA	826	796	118	2611
FA Advance	45	35	217	116
FA Processing	13	2	12	36
Fibers	1	1	98	8
Field Investigations	31	22	75	22
Field Investigations-In Lab	10	6	123	8
Hair	4	2	261	17
LP Comparison	103	111	97	129
LP Impressions	1	4	205	9
LP Processing	160	153	74	121
Miscellaneous	7	5	198	7
Paint	1	0		4
Physical Fit	2	3	87	5
Proximity Testing/GSR	1	0		4
Serial Number Restoration	12	1	518	45
TOX Ante-mortem	462	573	119	685
TOX Post Mortem	1725	1101	57	1404
Trace Processing	0	0		1



Portland Lab Summary

for Q4 2024

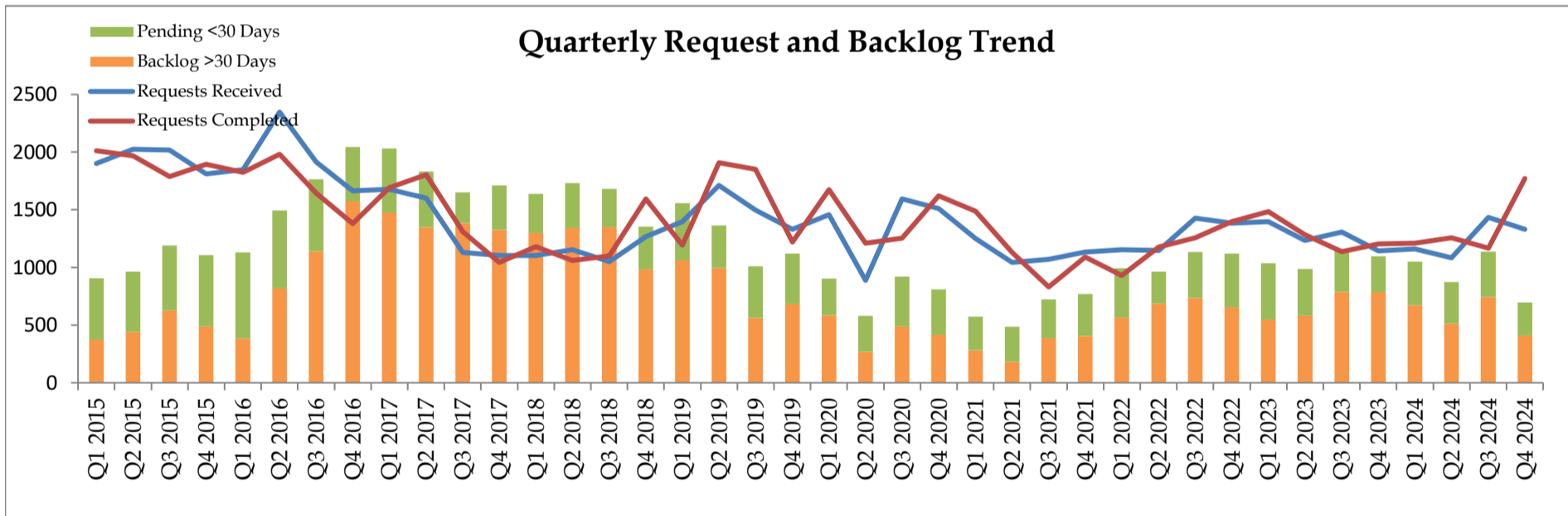
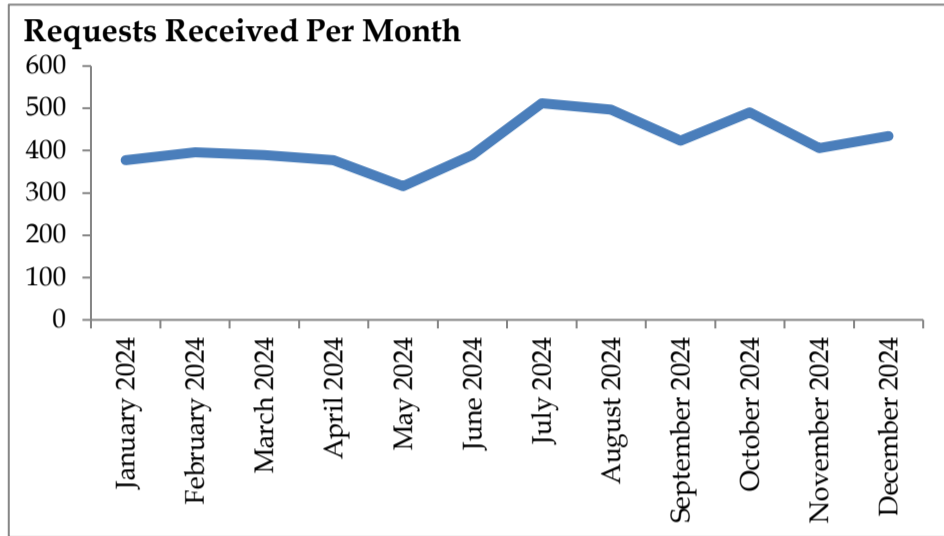
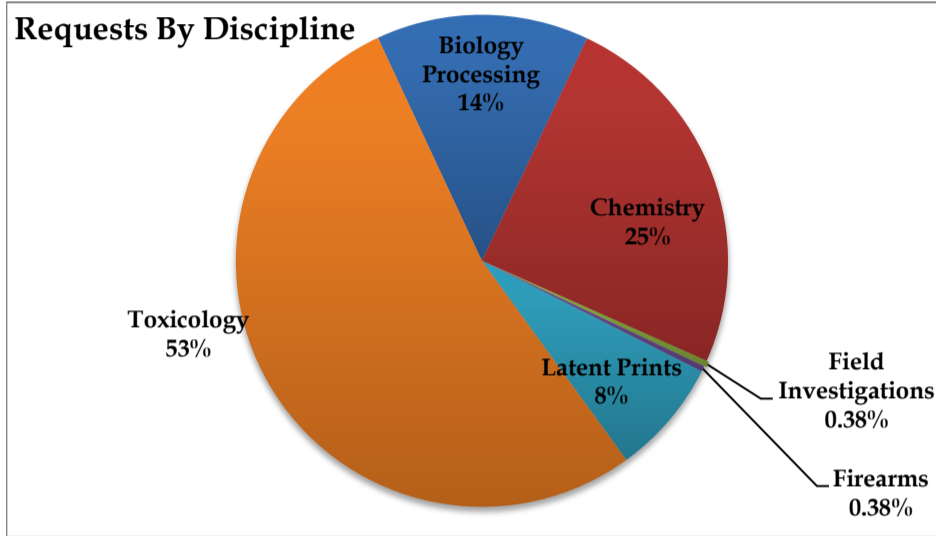
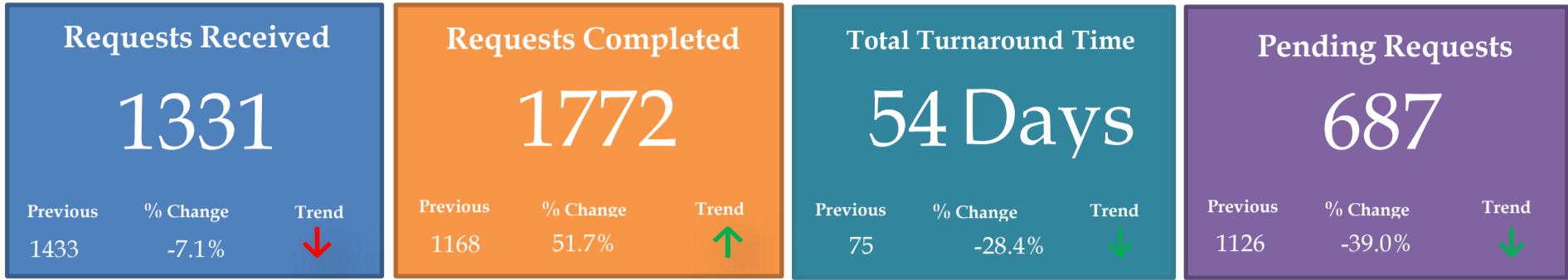


Discipline Stats

Discipline	New Requests Received	Requests Completed	Average Turnaround Time (Days)	Pending Requests
Arson	18	20	61	12
Biology Processing	310	330	37	139
Blood Volatiles	347	259	18	91
Cannabis Determination	7	4	210	12
CODIS Confirmation	97	97	0	0
Controlled Substances	380	228	94	681
DNA	826	796	118	2611
FA Advance	45	35	217	116
FA Processing	1	1	21	6
Fibers	1	1	98	8
Field Investigations	6	5	48	6
Field Investigations-In Lab	4	1	20	3
Hair	4	2	261	17
LP Comparison	40	28	140	54
LP Impressions	1	4	205	9
LP Processing	70	83	84	41
Miscellaneous	7	5	198	7
Paint	1	0		4
Physical Fit	2	3	87	5
Proximity Testing/GSR	1	0		4
Serial Number Restoration	4	1	518	31
TOX Ante-mortem	462	573	119	685
TOX Post Mortem	539	268	26	276

Springfield Lab Summary

for Q4 2024

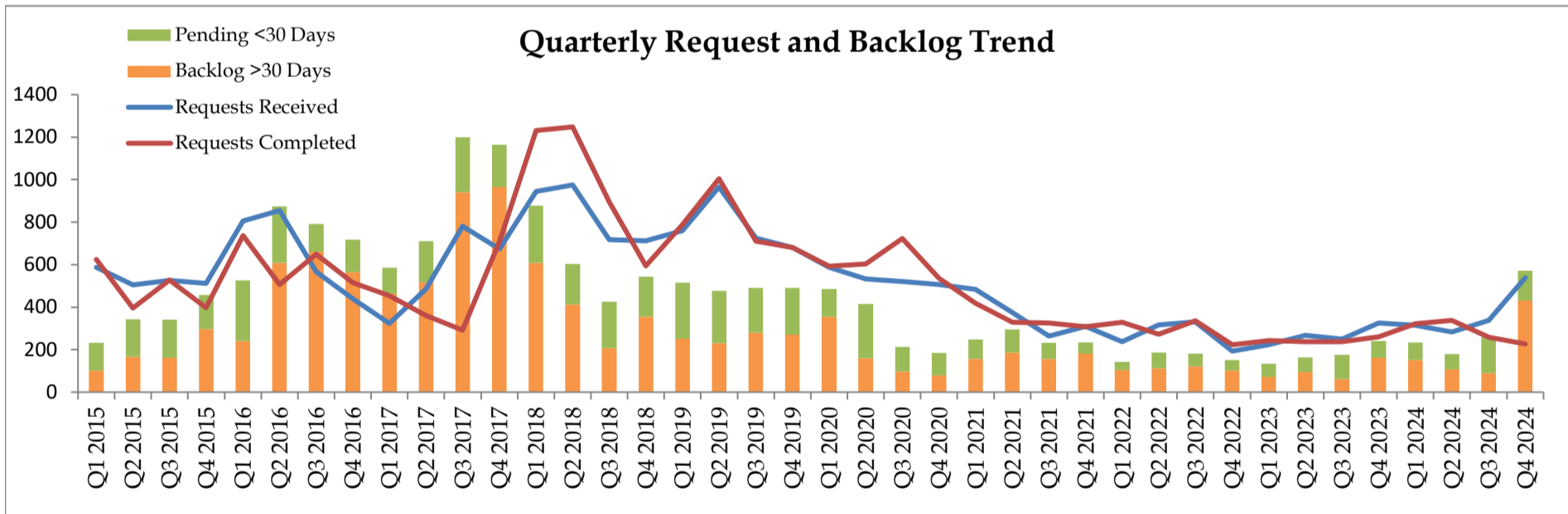
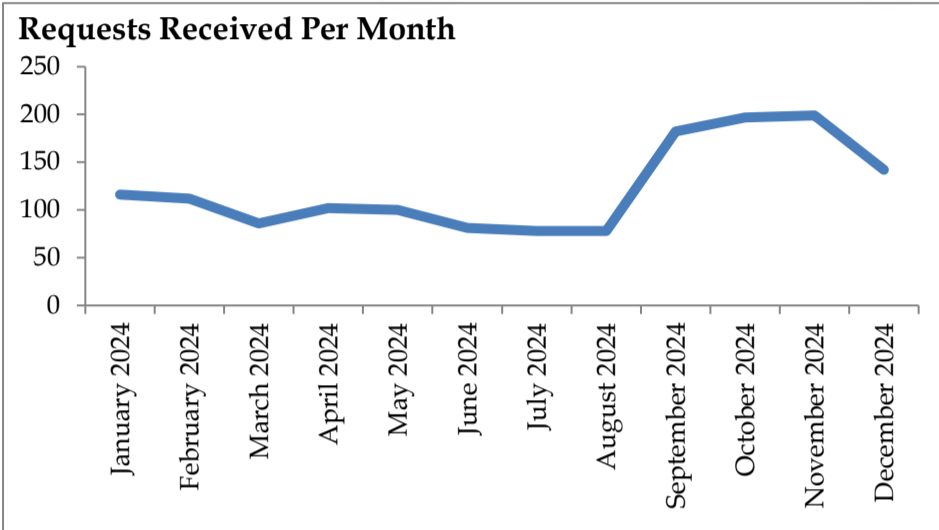
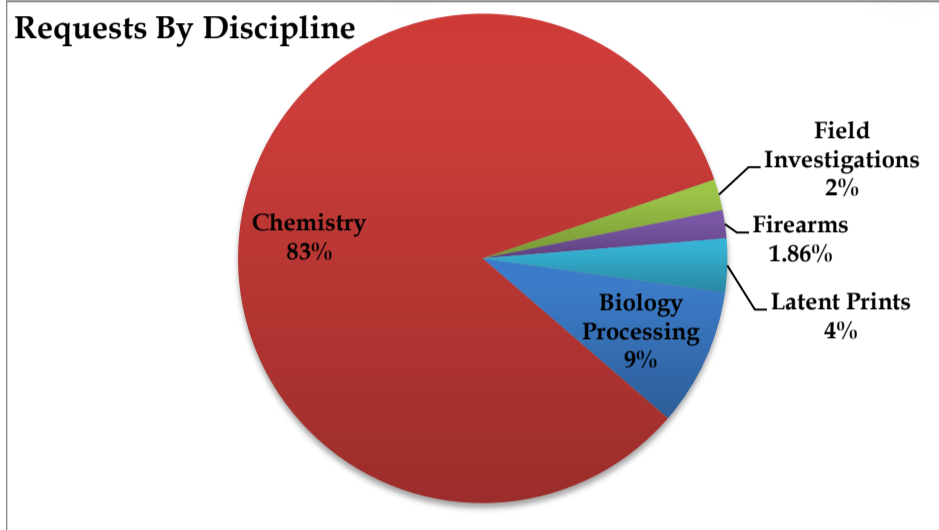
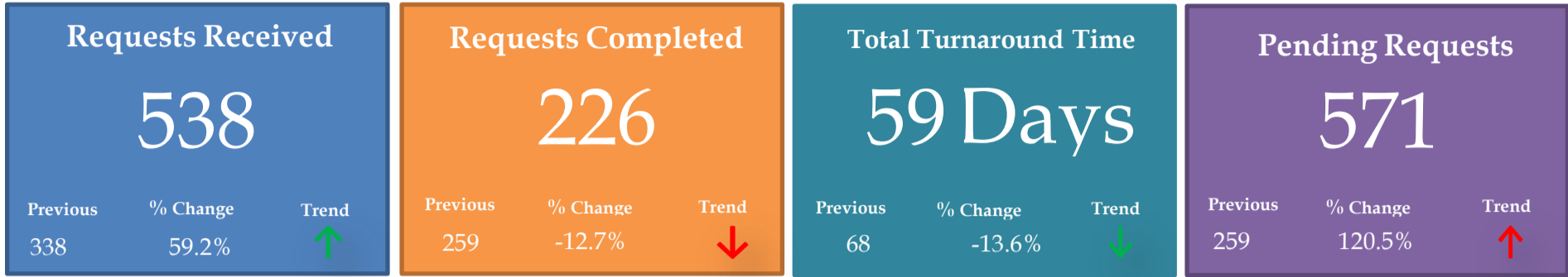


Discipline Stats

Discipline	New Requests Received	Requests Completed	Average Turnaround Time (Days)	Pending Requests
Biology Processing	186	205	37	62
Blood Volatiles	706	1401	53	70
Cannabis Determination	30	20	93	34
Controlled Substances	298	65	115	408
FA Processing	5	1	3	20
Field Investigations	3	0		5
Field Investigations-In Lab	2	3	132	1
LP Comparison	32	18	79	44
LP Processing	69	59	51	43

Central Point Lab Summary

for Q4 2024

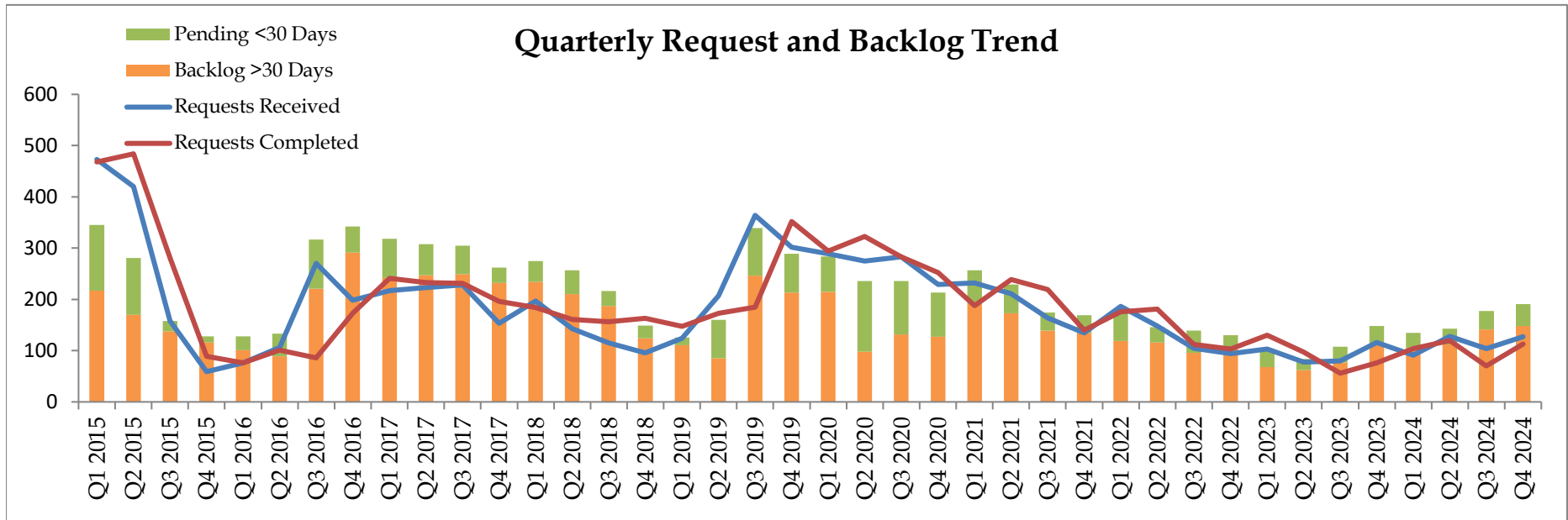
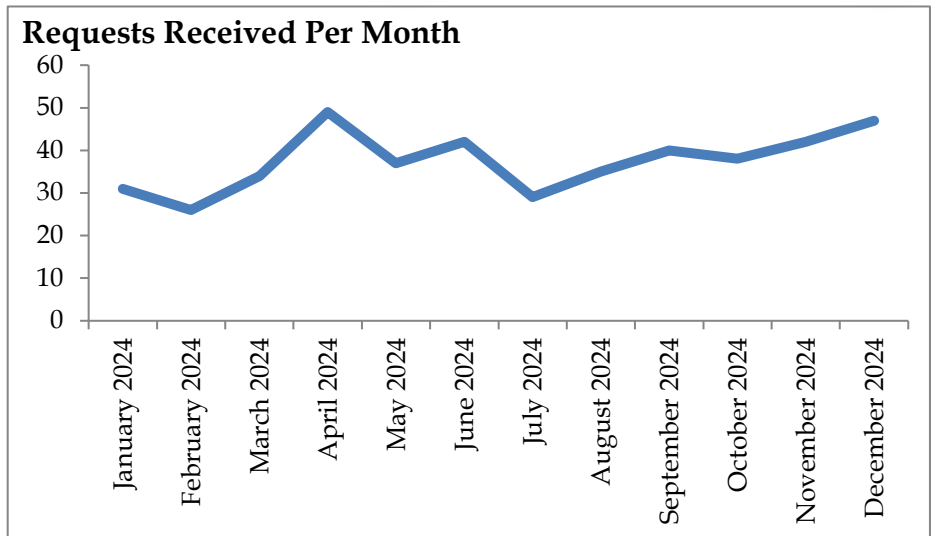
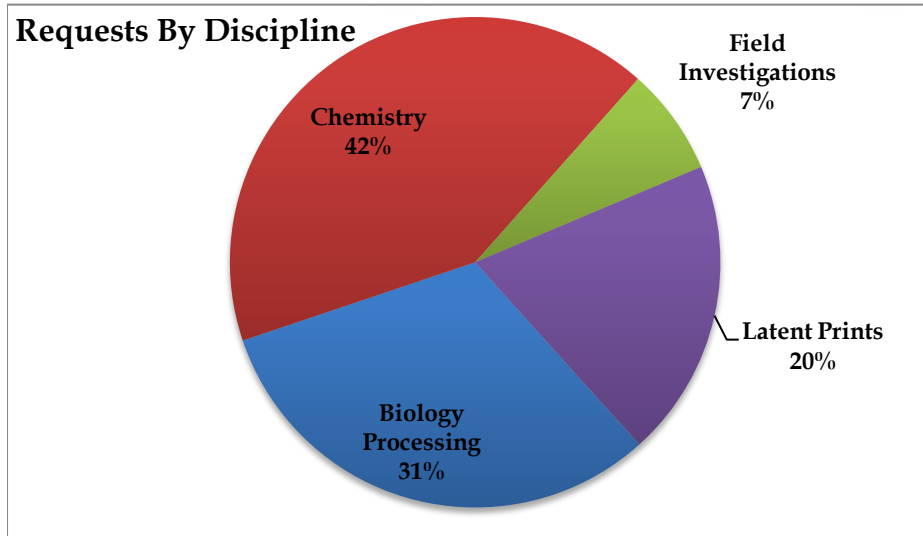
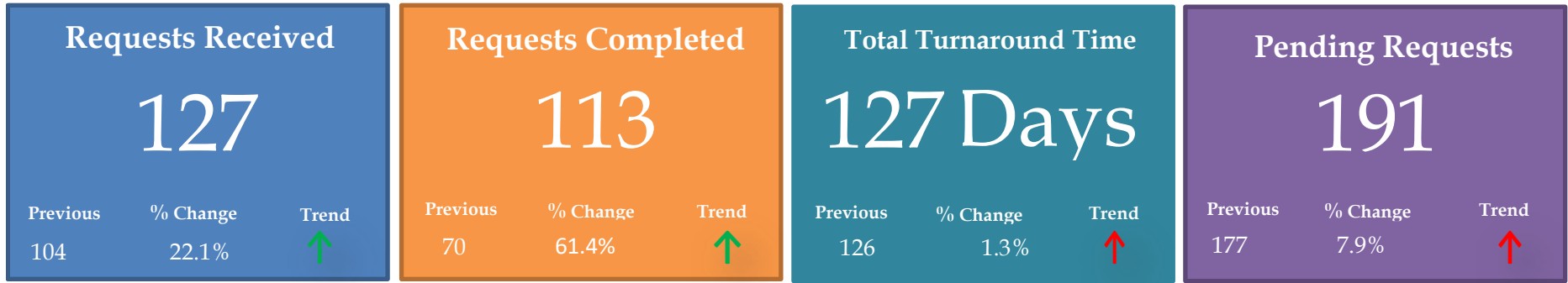


Discipline Stats

Discipline	New Requests Received	Requests Completed	Average Turnaround Time (Days)	Pending Requests
Biology Processing	49	52	54	28
Controlled Substances	449	131	55	504
FA Processing	2	0		2
Field Investigations	10	8	34	2
Field Investigations-In Lab	1	0		1
LP Comparison	11	31	95	15
LP Processing	8	4	7	5
Serial Number Restoration	8	0		14

Bend Lab Summary

for Q4 2024

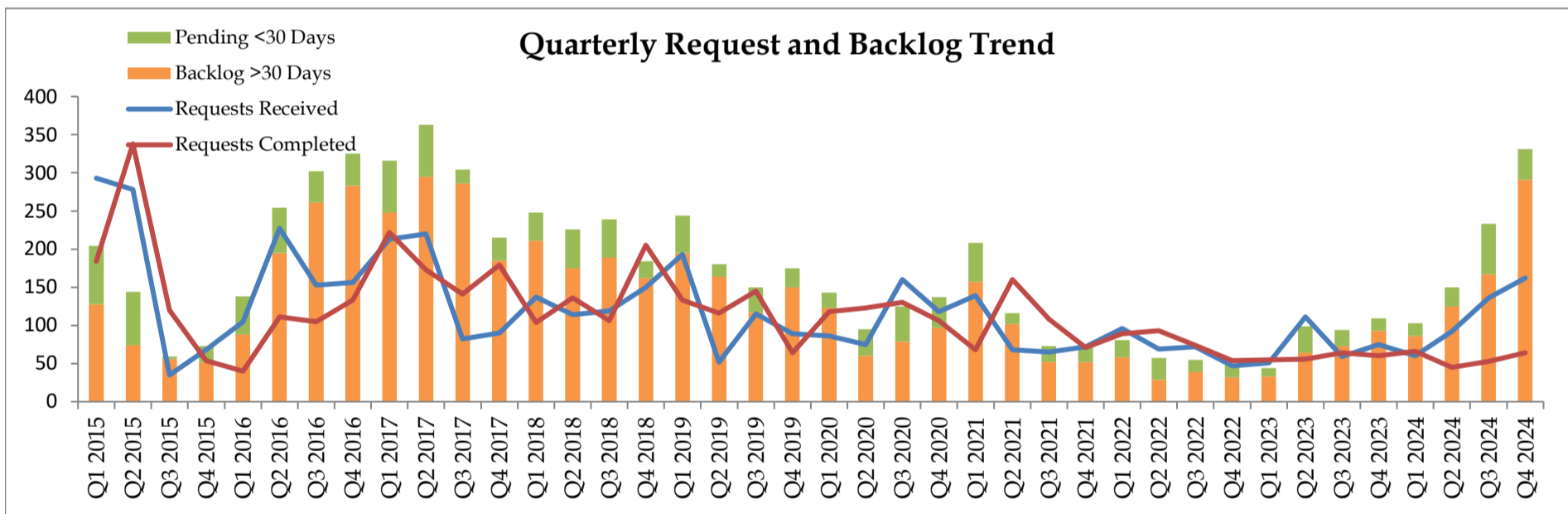
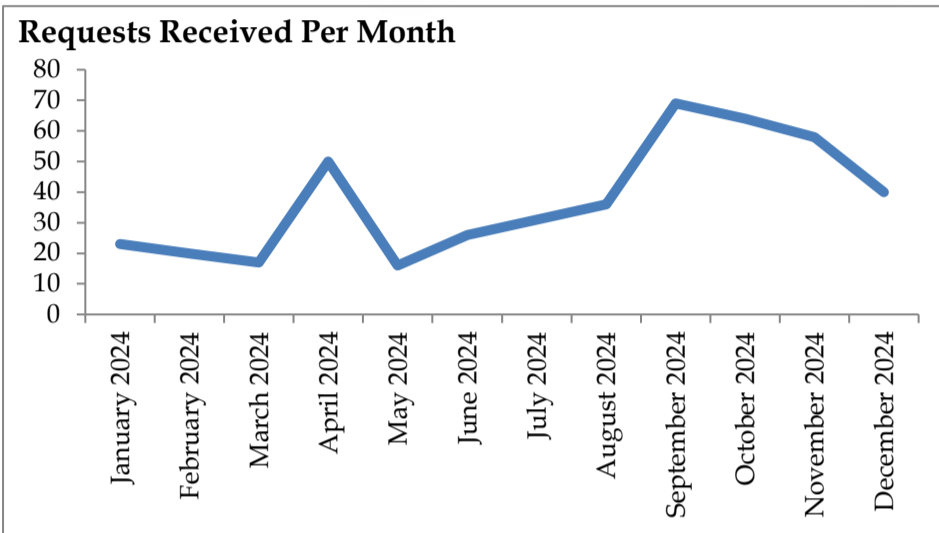
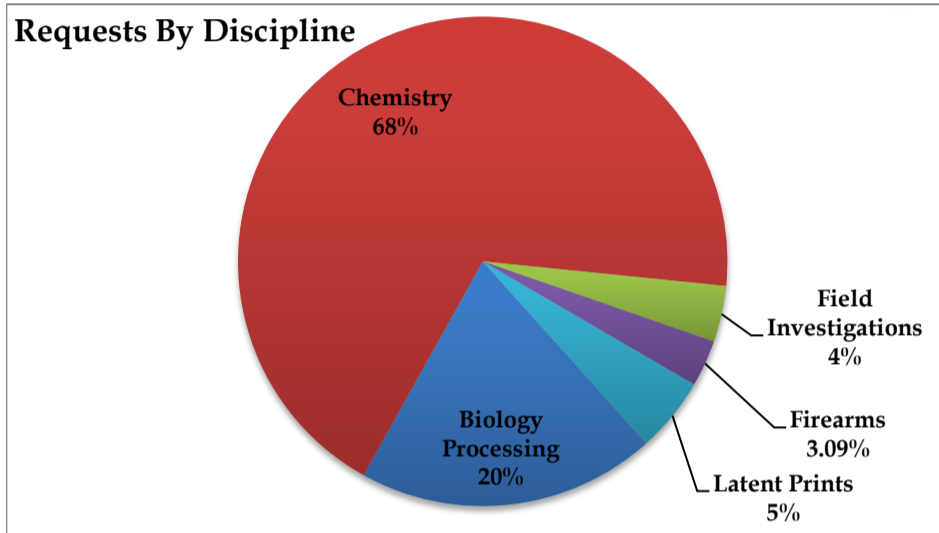
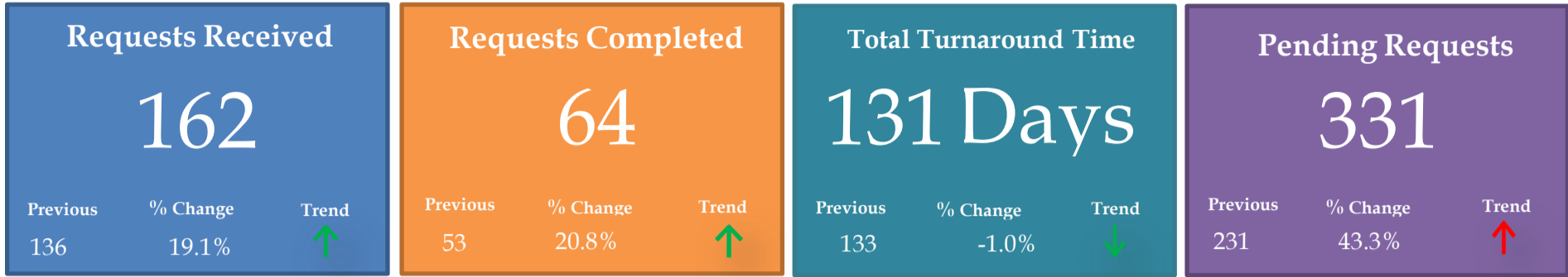


Discipline Stats

Discipline	New Requests Received	Requests Completed	Average Turnaround Time (Days)	Pending Requests
Biology Processing	40	25	76	41
Controlled Substances	53	40	196	118
Field Investigations	8	7	156	5
LP Processing	5	6	174	10
LP Comparison	20	34	72	16

Pendleton Lab Summary

for Q4 2024

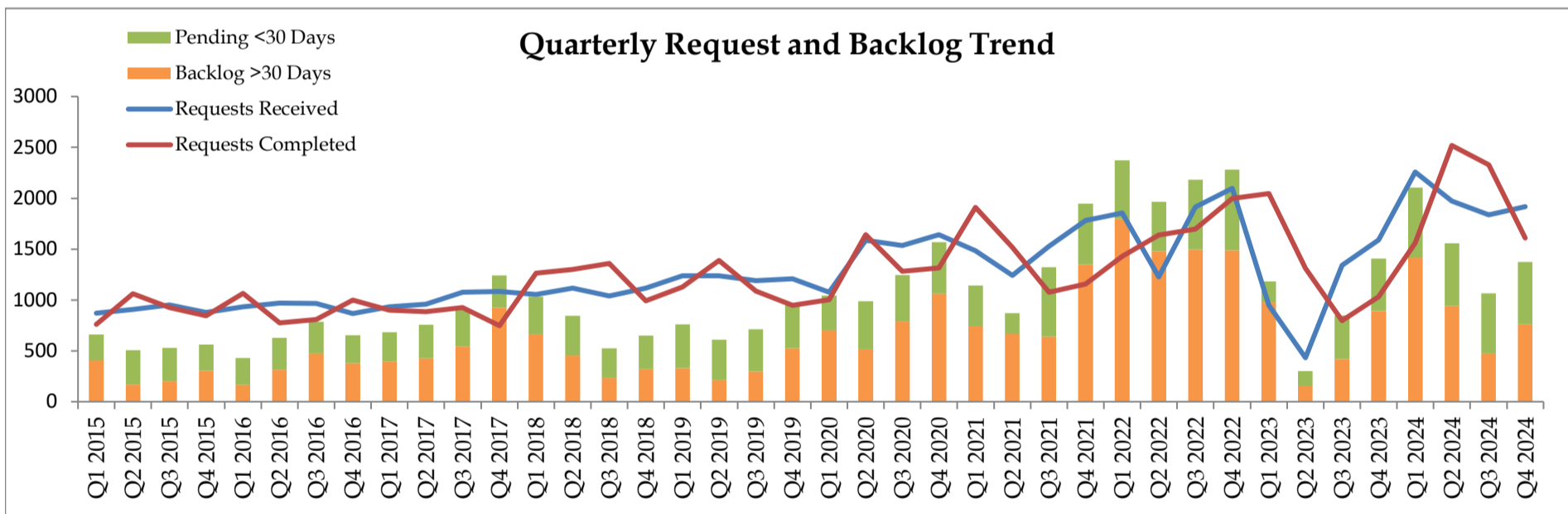
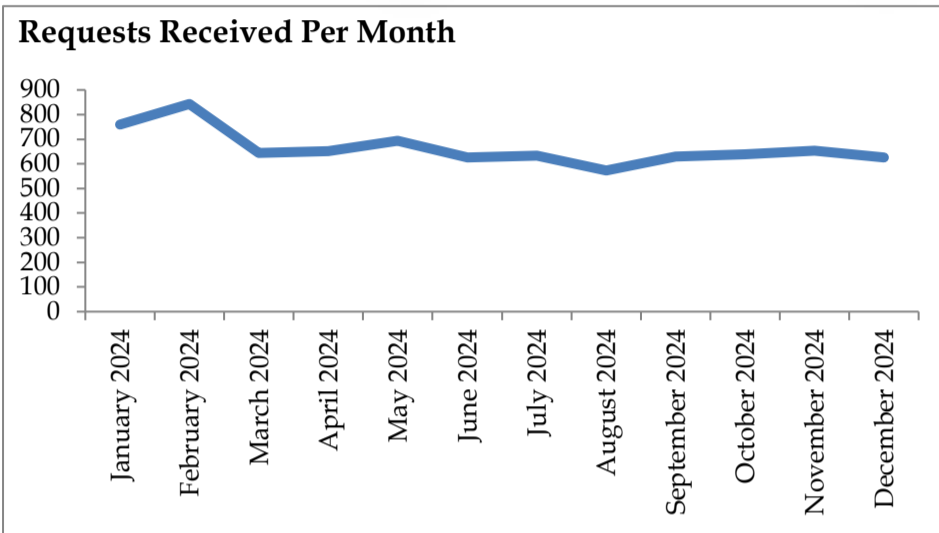
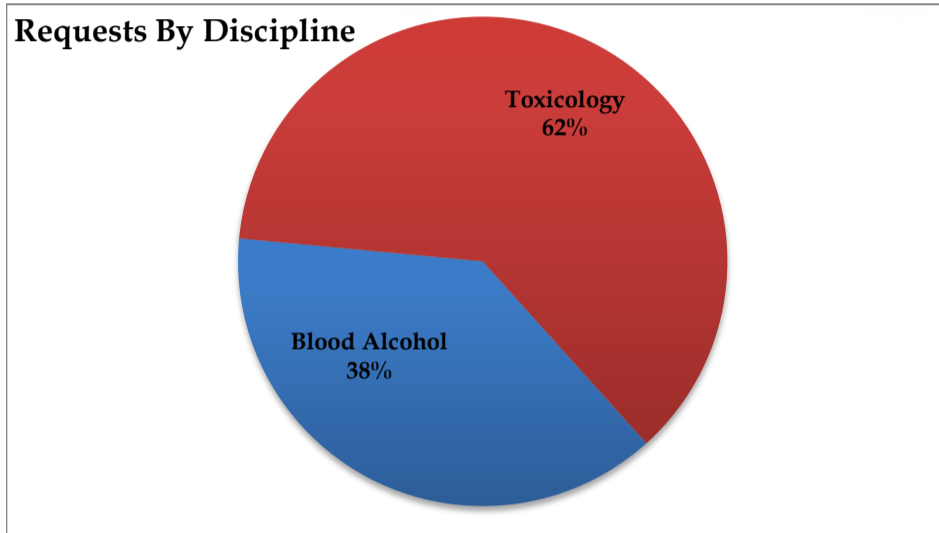
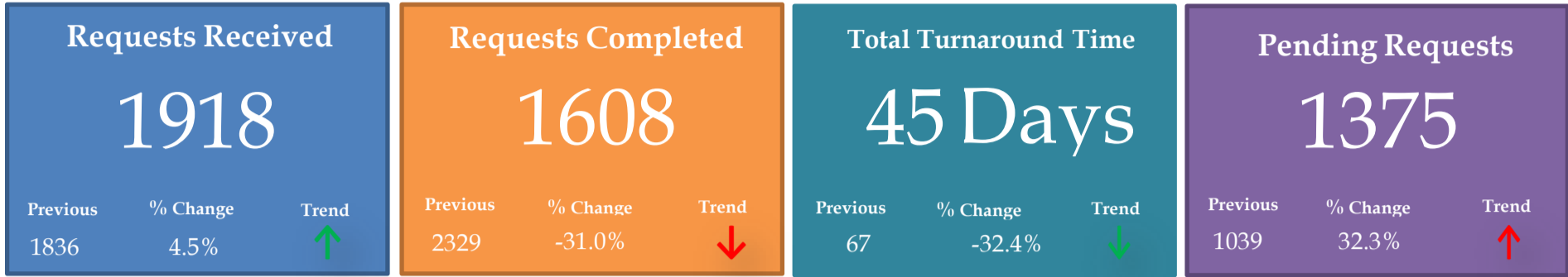


Discipline Stats

Discipline	New Requests Received	Requests Completed	Average Turnaround Time (Days)	Pending Requests
Biology Processing	32	31	46	37
Controlled Substances	111	29	217	258
FA Processing	5	0		8
Field Investigations	4	2	26	4
LP Processing	8	1	378	22

Medical Examiner Summary

for Q4 2024



Discipline Stats

Discipline	New Requests Received	Requests Completed	Average Turnaround Time (Days)	Pending Requests
Blood Volatiles	731	774	22	247
TOX Post Mortem	1186	833	67	1128