

Oregon State Parks and Recreation Commission

November 20, 2024

| | | |
|-------------------------|--|---------------|
| Agenda Item: | 8g | Action |
| Public Comment Allowed: | Yes | |
| Topic: | Collier Campground Entrance Improvement Construction Contract | |
| Presented by: | Rob Morris, Engineering Lead | |

Background:

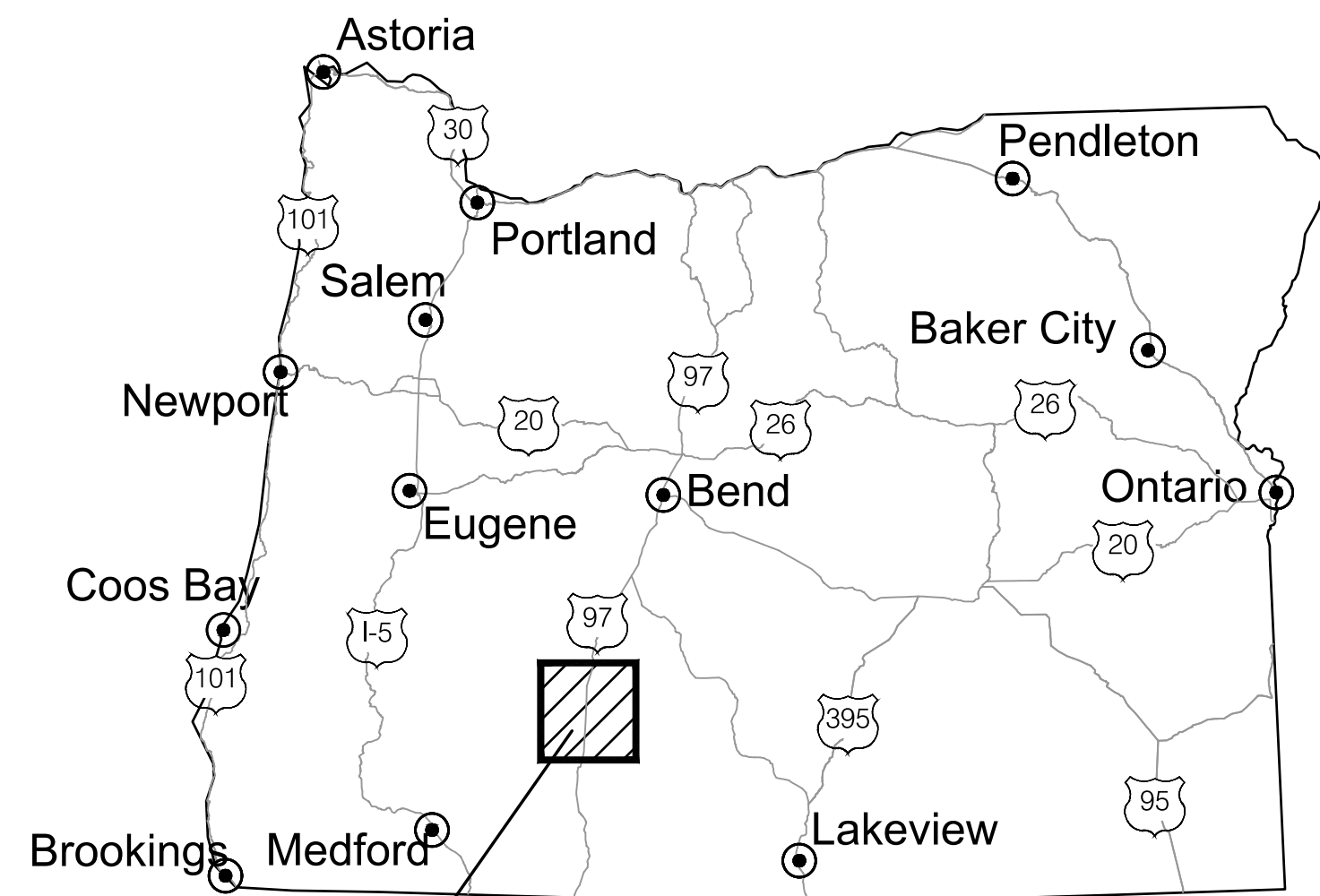
- The project is funded through the Policy Option Package (POP) funding for paving improvement projects in the 23-25 biennium.
- The Collier Campground Entrance project will improve the entry to the overnight camping area by providing a new paved roadway, parking area, storage building for staff use, registration kiosk, trash enclosure, vehicle access gates and RV dump station & washdown area.
- This project was initiated following the 242 Complex fire in fall 2020, which destroyed some of the existing park infrastructure that is being replaced under this scope of work.
- All new infrastructure will be constructed to meet ADA & OPRD’s accessibility standards.
- 100% design and permitting documents were completed in October 2024.
- Anticipated project schedule:
 - Bidding: January 2025
 - Contract: February 2025
 - Construction: April – June 2025

Prior Action by Commission: None

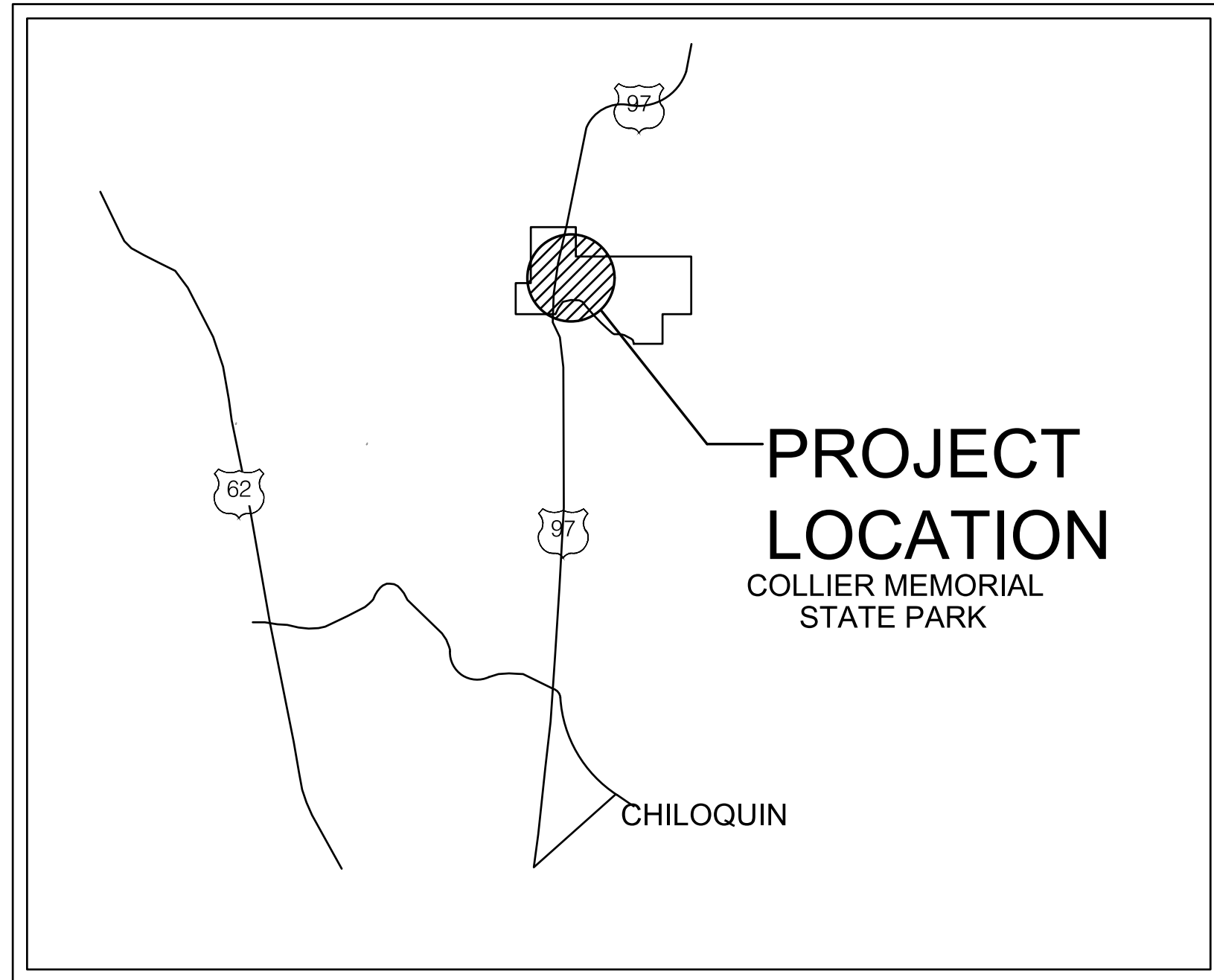
Action Requested: Approval to proceed with executing a construction contract not to exceed \$850,000.

Attachments: 8g Attachment A Civil Cover Sheet & Site Plan

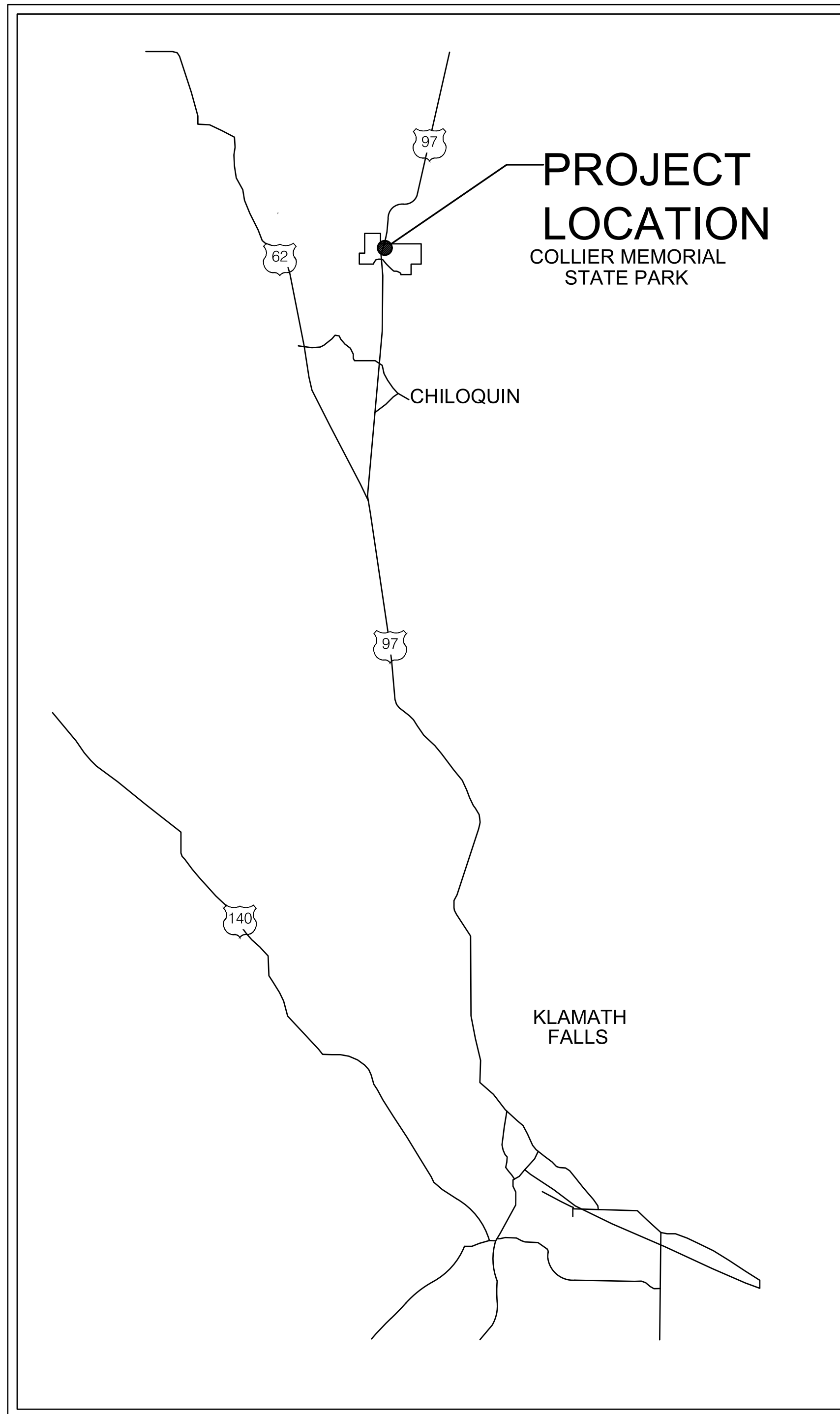
Prepared by: Kevin Johnson, Construction Project Manager



PROJECT LOCATION STATE MAP
NOT TO SCALE



VICINITY MAP
NOT TO SCALE



LOCATION MAP
NOT TO SCALE

2022 COLLIER MEMORIAL PARK IMPROVEMENTS

COLLIER MEMORIAL STATE PARK KLAMATH COUNTY, OREGON

CONTACTS

PROJECT MANAGER:
KEVIN JOHNSON
OREGON PARKS & RECREATION DEPT.
62976 OB RILEY ROAD,
BEND, OR 97703
PHONE: 541-306-9811

PARK MANAGER:
KAREN SPENCER
46000 HIGHWAY 97 N
CHILOQUIN, OR 97624

OWNER/APPLICANT:
OREGON PARKS & RECREATION DEPT.
725 SUMMER ST. NE, STE C
SALEM, OR 97301-1271
OFFICE: (503) 986-0707

PROJECT DATA

PROJECT LOCATION: COLLIER MEMORIAL STATE PARK
46000 HIGHWAY 97 N
CHILOQUIN, OR 97624

AREA OF DISTURBANCE: 1.6 ACRES

DRAWING INDEX

CIVIL CONSTRUCTION PLANS

- C1 TITLE SHEET
- C2 GENERAL SITE PLAN
- C3 EROSION AND SEDIMENT CONTROL NOTES
- C4 EROSION AND SEDIMENT CONTROL PLANS
- C5 EROSION AND SEDIMENT CONTROL DETAILS
- C6 ENTRANCE LOOP DEMO
- C7 ENTRANCE ROAD DEMO
- C8 RV CLEANOUT DEMO
- C9 ENTRANCE LOOP LAYOUT
- C10 ENTRANCE ROAD LAYOUT
- C11 RV DUMP SITE LAYOUT
- C12 GRADING PLAN - ENTRANCE LOOP
- C12.1 HORIZONTAL LAYOUT - ENTRANCE LOOP
- C13 WELL HOUSE ROAD GRADING
- C14 GRADING PLAN - RV CLEANOUT
- C15 ENTRANCE LOOP UTILITIES
- C16 RV CLEANOUT UTILITIES
- C17-C23 DETAILS
- C24-C25 TRASH COMPACTOR DETAILS
- C26 FENCE DETAILS

ARCHITECTURAL PLANS

- T1 TITLE SHEET
- G1 SCHEDULES
- A1 FLOOR/ROOF PLAN
- A2 ELEVATIONS
- A3 CROSS SECTIONS
- E1 ELECTRICAL/PLUMBING PLANS

STRUCTURAL PLANS

- S1 GENERAL STRUCTURAL NOTES
- S2 TYPICAL DETAILS
- S3 FOUNDATION PLAN
- S4 LATERAL & ROOF FRAMING PLANS
- S4.1 ROOF FRAMING DETAILS

ABBREVIATIONS:

- AC ASPHALTIC CONCRETE
- BC BACK OF CURB
- BFP BACKFLOW PREVENTION DEVICE
- BW BACK OF WALK
- C&G CABLE TELEVISION
- CV CURB AND GUTTER
- CF CURB FACE
- C CENTERLINE
- CO CLEAN OUT
- CONC CONCRETE
- DCV DETECTOR CHECK VALVE
- DRWY DRIVEWAY
- EC END OF CURVE
- ECAB ELECTRIC CABINET
- ELEC ELECTRIC
- EM ELECTRIC METER
- EMH ELECTRIC MAN-HOLE
- EP EDGE OF PAVEMENT
- EPB ELECTRICAL PULL BOX
- ESMT EASEMENT
- FD FOUND

CONTINUED:

- FDC FENCE
- FL FLOWLINE
- FP FINISH PAD ELEVATION
- FS FINISH SURFACE
- FW FRONT OF WALK
- DIRECTION OF DRAINAGE FLOW
- GS GAS LINE
- GA GUY ANCHOR
- GM GAS METER
- GV GAS VALVE
- HC HANDICAP
- HCR HANDICAP RAMP
- ICB IRRIGATION CONTROL BOX
- ICV IRRIGATION CONTROL VALVE
- INV INVERT
- LF LINEAR FEET
- LT STD LIGHT STANDARD
- MH MANHOLE
- NTS NOT TO SCALE
- OH OVERHEAD
- PB PULL BOX

CONTINUED:

- PCC POINT COMPOUND CURVE
- PED PEDESTAL
- PI POINT OF INTERSECTION
- PIV POST INDICATOR VALVE
- PKWY PARKWAY
- P PROPERTY LINE
- P.O.C. POINT OF CONNECTION
- PP POWER POLE
- PPR POINT OF REVERSE CURVE
- P.U.E. PUBLIC UTILITY EASEMENT
- R RADIUS
- R.C.B. REINFORCED CONCRETE BOX
- RCLW RECLAIMED WATER LINE
- RET RETAINING
- R/W RIGHT OF WAY
- SS SANITARY SEWER
- SCO SEWER CLEAN-OUT
- SD STORM DRAIN
- SDCO STORM CLEAN-OUT
- SDMH STORM DRAIN MANHOLE
- SE SOUTHEAST

CONTINUED:

- SELY SOUTHEASTERLY
- SF SQUARE FEET
- SLCB STREET LIGHT CONTROL BOX
- SLPB STREET LIGHT PULL BOX
- SMH SEWER MANHOLE
- SP SIGN POST
- STD STANDARD
- STLT STREET LIGHT
- SW SIDEWALK
- TC TOP OF CURB
- TG TOP OF GRATE
- 10"TR 10" DEMETER TREE
- TOE TOE OF SLOPE
- TOP TOP OF SLOPE
- TRANS TRANSFORMER
- TW TOP OF WALL
- TYP. TYPICAL
- V VALVE
- VG VALLEY GUTTER
- VLT VAULT
- W WATER LINE
- WM WATER METER
- WV WATER VALVE

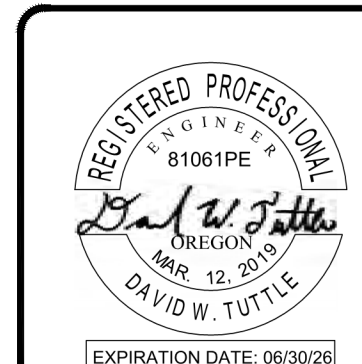


UTILITY NOTIFICATION CENTER

COLOR CODES:

- RED - ELECTRICAL POWER LINES, CABLES, OR CONDUIT, AND LIGHTING CABLES
- YELLOW - GAS, OIL, STEAM, PETROLEUM, OR OTHER HAZARDOUS LIQUID OR GASEOUS MATERIALS.
- ORANGE - COMMUNICATIONS, CABLE TV, ALARM OR SIGNAL LINES, CABLES OR CONDUITS.
- BLUE - WATER, IRRIGATION, AND SLURRY LINES.
- GREEN - SEWERS, DRAINAGE FACILITIES OR OTHER DRAIN LINES.
- WHITE - PRE-MARKING OF THE OUTER LIMITS OF THE PROPOSED EXCAVATION OR MARKING THE CENTERLINE AND WIDTH OF PROPOSED LINEAL INSTALLATIONS OF BURIED FACILITIES.
- PINK - TEMPORARY SURVEY MARKINGS
- PURPLE - SLURRY AND RECLAIMED

ATTENTION: OREGON LAW REQUIRES YOU TO FOLLOW RULES ADOPTED BY THE OREGON UTILITY NOTIFICATION CENTER. THOSE RULES ARE SET FORTH IN OAR 952-001-0010 THROUGH 952-001-0090. YOU MAY OBTAIN COPIES OF THE RULES BY CALLING THE CENTER. (NOTE: THE ADMINISTRATIVE TELEPHONE NUMBER FOR THE OREGON UTILITY NOTIFICATION CENTER IS (503) 232-1987).



| REVISION | DATE | BY |
|----------|------|----|
| | | |
| | | |
| | | |
| | | |
| | | |

| APPROVED BY | CHECKED BY | DESIGNED BY | DATE |
|-------------|------------|-------------|------------|
| | | | 08/29/2024 |

Civil West
Engineering Services, Inc.
830 OHARE PARKWAY, SUITE 102
MEDFORD, OREGON 97504
P: 541-266-8601

TITLE SHEET
2022 COLLIER PARK IMPROVEMENTS
COLLIER MEMORIAL STATE PARK

OREGON PARKS AND RECREATION DEPARTMENT

| | |
|-------------|----------|
| SHEET: | C1 OF 38 |
| OPRIS#: | 00000 |
| CONTRACT #: | 00000 |

8/20/2024 1:00 PM - R12412 Oregon Parks and Recreation Department - OPRIS2412002 OPRD - Collier Memorial State Park Improvements 202204 Final Design (Drawing) TITLE SHEET.dwg - David Tuttle

IMPROVEMENT NOTES:

- 1 NEW WOOD/STORAGE BUILDING, FOR DETAILS SEE ARCHITECTURAL AND STRUCTURAL PLANS.
- 2 STUB ELECTRICAL CONDUIT FOR FUTURE E. VEHICLE CHARGING STATION.
- 3 NEW FENCED IN TRASH/RECYCLE AREA, FOR DETAILS SEE SHEETS C24 AND C25.
- 4 NEW HOST/SHOP AREA CONCRETE PAD.
- 5 INSTALL 12" WIDE x 10' LONG THERMOPLASTIC STOP BAR, SIGN POSTS AND STOP SIGN. COORDINATE LOCATION WITH PROJECT MANAGER BEFORE INSTALLING. SEE SHEETS 2 AND 6, SHEET C19.
- 6 INSTALL PAVEMENT MARKINGS, SIGN POSTS AND YIELD SIGN. COORDINATE LOCATION WITH PROJECT MANAGER BEFORE INSTALLING. SEE SHEET C19.
- 7 CONTRACTOR TO INSTALL NEW DOUBLE ARMED MAINTENANCE GATE AND GATE ARM HOLDERS TO BE PROVIDED BY OWNER. COORDINATE EXACT LOCATION WITH OWNER. SEE SHEET C23 FOR DETAILS.
- 8 INSTALL NEW "SHORT TERM PARKING FOR REGISTRATION" SIGN. COORDINATE LOCATION WITH PROJECT MANAGER BEFORE INSTALLING. SIGN TO BE SUPPLIED BY OWNER.
- 9 INSTALL NEW "SHORT TERM PARKING FOR TRASH DROP OFF" SIGN. COORDINATE LOCATION WITH PROJECT MANAGER BEFORE INSTALLING. SIGN TO BE SUPPLIED BY OWNER.
- 10 INSTALL NEW REGISTRATION KIOSK AND CONCRETE PAD. KIOSK WILL BE PROVIDED BY ORPD. FOR DETAILS SEE SHEET C21
- 11 CONTRACTOR SHALL INSTALL ONE (1) 3" DIAMETER SCHEDULE 40 PVC PIPE AS PROTECTIVE SLEEVE FOR THE FUTURE IRRIGATION SYSTEM. LENGTH OF THE SLEEVE SHALL EXTEND TO 1.5' BEYOND THE EDGE OF THE PROPOSED SIDEWALK. ENDS OF PIPE SHALL BE CAPPED AND MARKED WITH A WOOD STAKE AT BOTH ENDS FOR FUTURE RECOVERY. DEPTH SHALL BE ONE (1) FOOT BELOW SIDEWALK SUBGRADE.

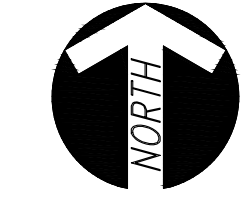
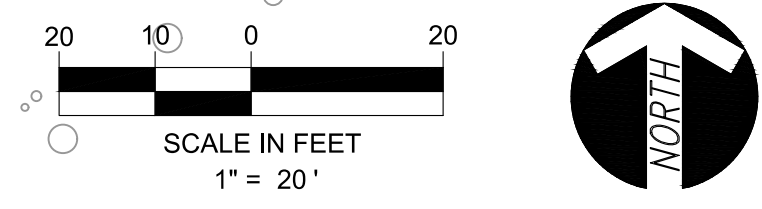
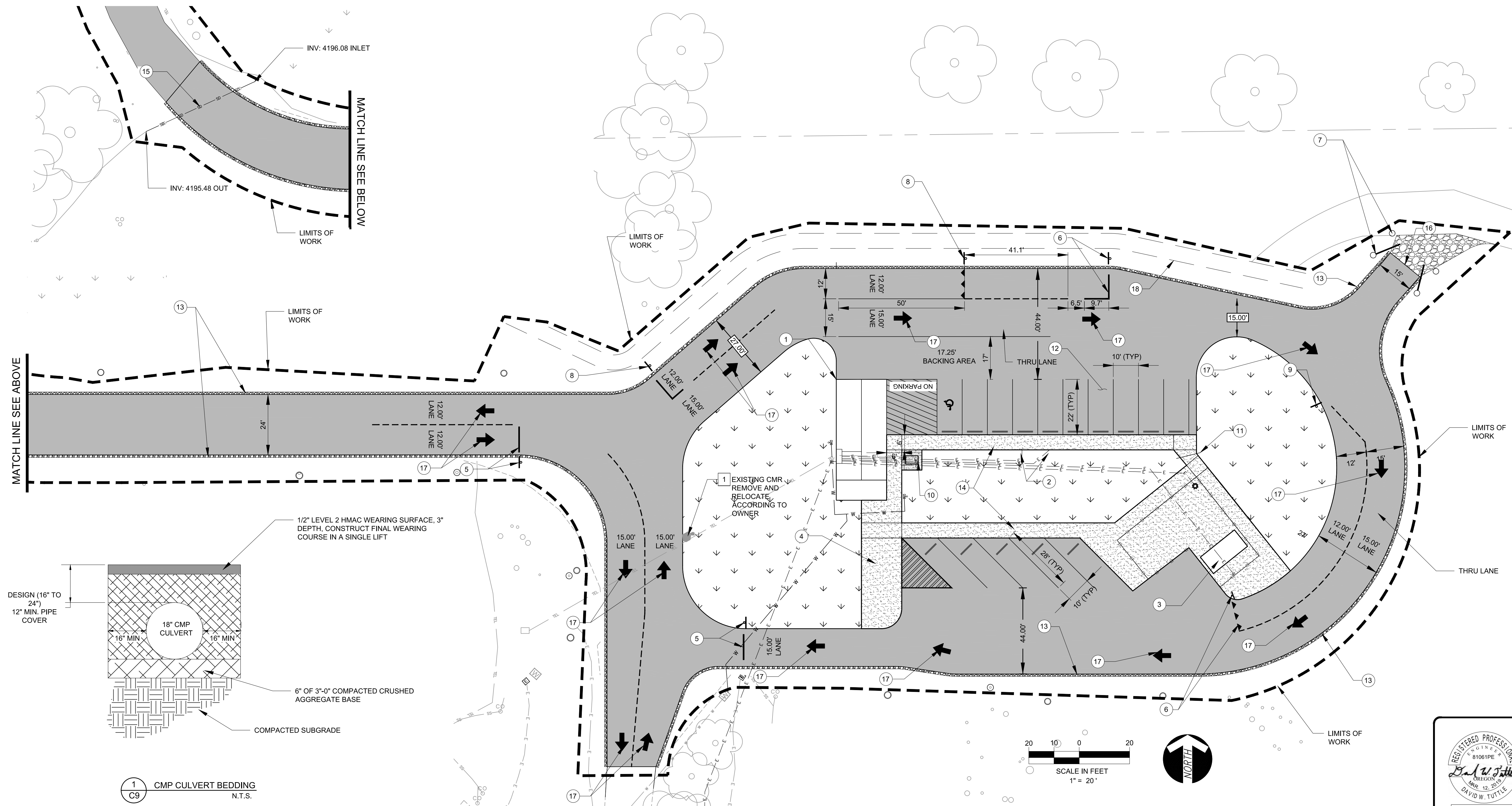
- 12 INSTALL PAVEMENT MARKING AND WHEEL STOPS. INCLUDE ONE ADA PARKING SPOT AND REQUIRED SIGN. COORDINATE LOCATION WITH PROJECT MANAGER DURING CONSTRUCTION. SEE SHEET C19.
- 13 INSTALL SHOULDER AGGREGATE AT THE EDGE OF PAVEMENT TO ELIMINATE VERTICAL DROPS AND TRIP HAZARDS. SEE DETAILS, SHEET C18.
- 14 CONTRACTOR TO CONSTRUCT NEW SIDEWALK. SEE DETAIL 4, SHEET C18
- 15 CONTRACTOR TO INSTALL NEW 47" LONG 18" CMP CULVERT, MAINTAIN LOCATION AND ELEVATIONS OF EXISTING 18" CMP CULVERT. SEE BELOW FOR BEDDING DETAIL.
- 16 CONTRACTOR TO PROVIDE A SMOOTH TRANSITION TO EXISTING GROUND.
- 17 INSTALL NEW WHITE DIRECTIONAL ARROW, COORDINATE LOCATION WITH PROJECT MANAGER BEFORE INSTALLING. SEE SHEET C19 FOR DETAILS.
- 18 CONTRACTOR SHALL CONSTRUCT NEW DRAINAGE SWALE PER DETAIL 7 ON SHEET C19. SEE GRADING SHEET C12.

GENERAL CONSTRUCTION NOTES:

1. CONTRACTOR TO VERIFY ALL PROJECT LIMITS, DEMOLITION AND CONSTRUCTION WITH THE PROJECT MANAGER PRIOR TO STARTING WORK.
2. CONTRACTOR IS RESPONSIBLE FOR ALL TRAFFIC CONTROL AND WORK ZONE SAFETY.
3. CONTRACTOR IS RESPONSIBLE FOR ALL EROSION AND POLLUTION CONTROL MEASURES. INSPECTION SERVICES FOR EROSION CONTROL WILL BE PROVIDED BY THE OWNER.
4. CONTRACTOR IS RESPONSIBLE FOR LOCATING AND PROTECTION OF EXISTING AND NEWLY CONSTRUCTED UTILITIES.
5. CONTRACTOR IS RESPONSIBLE FOR REMOVAL AND LEGAL DISPOSAL OF ALL CONSTRUCTION DEBRIS, UNLESS OTHERWISE NOTED.
6. CONTRACTOR SHALL COORDINATE WORK ITEMS WITH KLAMATH COUNTY BUILDING AND PUBLIC WORKS AND OBTAIN ALL REQUIRED PERMITS TO DO THIS WORK.

KEY NOTES

- 1 PROTECT IN PLACE AS NOTED



| REVISION | DATE | BY |
|----------|------|----|
| | | |
| | | |
| | | |

| | | | |
|-------------|----|------|------------|
| APPROVED BY | MB | DATE | 08/29/2024 |
| CHECKED BY | MR | | |
| DESIGNED BY | DT | | |
| DRAWN BY | | | |

Civil West
 Engineering Services, Inc.
 830 OHARE PARKWAY, SUITE 102
 MEDFORD, OREGON 97504
 P: 541-266-8601

ENTRANCE LOOP LAYOUT
 2022 COLLIER PARK IMPROVEMENTS
 COLLIER MEMORIAL STATE PARK
 OREGON PARKS AND RECREATION DEPARTMENT

| | |
|---------|-------------|
| SHEET: | C9 OF 38 |
| OPRIS#: | CONTRACT #: |
| | 00000 |

10/1/2024 11:22 AM - R:2012 Oregon Parks and Recreation Department - ORPD\2412-002-CPRPD - Collier Memorial State Park Improvements 2022\04 Final Design\Drawings\DWG\CML SHEETS.dwg - David Tuttle