

Oregon State Parks and Recreation Commission

November 20, 2024

Agenda Item:	8c	Action
Public Comment Allowed:	Yes	
Topic:	Kam Wah Chung A&E Contract Amendment	
Presented by:	Rob Morris, Engineering Lead	

Background:

- Staff request approval to amend the existing A&E contract with COLE Architects to over \$750,000.
- The new Kam Wah Chung Interpretive Center project consists of designing a new interpretive center and collections facility adjacent to the existing museum.
 - The new building (7,500sf to <10,000sf) will be constructed to the north of the historic building on property acquired recently from the City of John Day. It will be a high-efficient, climate-controlled building with solar panels.
 - The new building is anticipated to include expanded interpretive areas, a classroom, collection processing, restoration, and storage, and support staff office space
 - Planned site improvements include parking area(s) and ADA walk access to the new interpretive center and historic KWC building, additional walking paths, plaza/gathering areas and sitting areas, improved parking facilities, and a fire access lane
- The current design contract was based on developing a program and design provided by a previous architect. The program has since been completely redeveloped due to significant changes and needed to better suit the needs of the community, the site, and OPRD.
 - Original contract: \$524,307
 - Total after amendment: \$1,300,000
- The design team completed the construction documents and submitted them to OPRD on January 31st, 2024.
- The construction budget for this project is currently \$7,000,000. The project is funded by the General Obligation (GO) Bond.
- Project is currently in the design development phase. Final construction documents drawings are due March 7th, 2025.

Prior Action by Commission: Approval of Kam Wah Chung GO Bond Project – Nov 2021 Commission meeting.

Action Requested: Approval to amend A&E contract to a value not to exceed \$1,300,000.

Attachments:

- 8c Attachment A Schematic Plans
- 8c Attachment B Schematic Massing Images

Prepared by: James Robinson, Construction Project Manager



Figure A.1 – Site Plan



Figure A.2 – Schematic Floor Plan

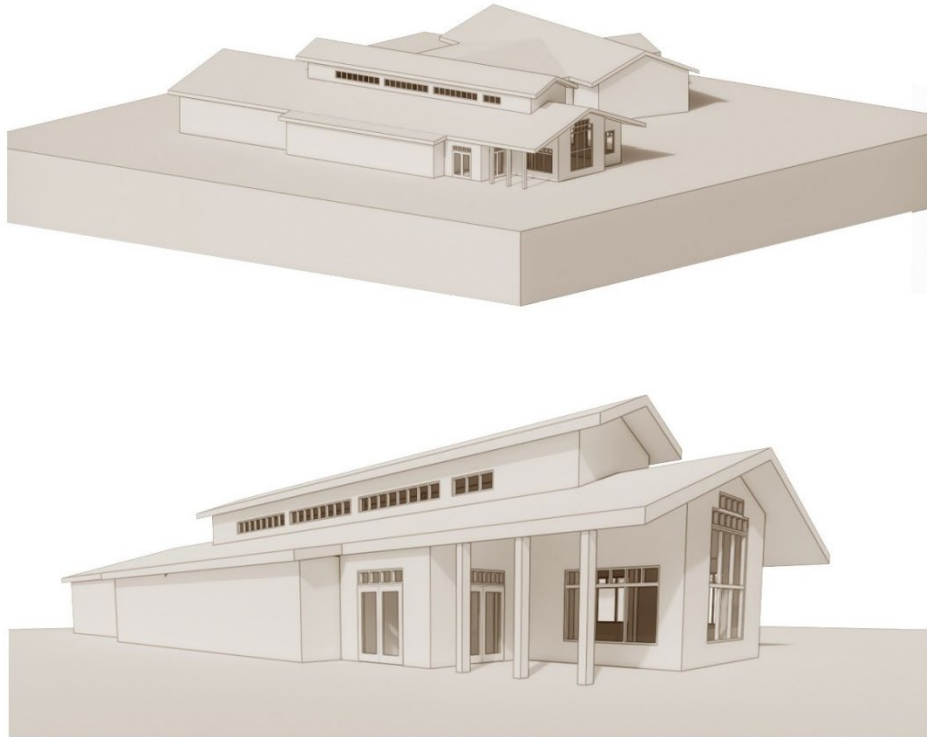


Figure B.1 – Exterior massing images



Figure B.2 – Interior main lobby rendering