

COVID-19 Weekly Report

Oregon's Weekly Surveillance Summary



Readers, we want to hear from you! OHA is accepting feedback to keep this report informative, easy to navigate, and relevant to readers. Please share your input here: <https://redcap.link/OHA-report-survey>.

Weekly Data Report - March 9, 2022

Table of Contents

Background	2
Weekly Report Summary	3
Clinical Characteristics and risk factors.....	4
Clinical symptoms and reported risk factors	4
Figure 1. Reported signs and symptoms for all COVID-19 cases	5
Figure 2. Reported symptoms among all COVID-19 cases by week of onset.....	6
Figure 3. Reported risk factors among all COVID-19 cases.....	7
Geography	8
Figure 4. Case rates per 100,000 population, by county.....	8
Demographics	9
Sex	9
Table 1. Severity and rates of COVID-19 by sex.....	9
Figure 5. Recent COVID-19 cases by sex and week of onset	10
Figure 6. All COVID-19 cases by sex and week of onset.....	11
Age	12
Table 2. Severity and rates of COVID-19 by age	12
Figure 7. Recent COVID-19 cases by age and week of onset	13
Figure 8. All COVID-19 cases (counts) by age and week of onset	14
Figure 9. All COVID-19 cases (case rate per 100,000) by age and week of onset	15
Race	16
Table 3. Severity and rates of COVID-19 by race	16

COVID-19 Weekly Report

Oregon’s Weekly Surveillance Summary



Figure 10. Recent COVID-19 cases by race and week of onset	17
Figure 11. All COVID-19 cases (counts) by race and week of onset.....	18
Figure 12. All COVID-19 cases (case rates per 100,000) by race and week of onset	19
Ethnicity	20
Table 4. Severity and rates of COVID-19 by ethnicity	20
Figure 13. Recent COVID-19 cases by ethnicity and week of onset.....	21
Figure 14. All COVID-19 cases (counts) by ethnicity and week of onset	22
Figure 15. All COVID-19 cases (case rates per 100,000) by ethnicity and week of onset	23
Age-adjustment.....	24
Table 5. Ratio of age-adjusted rates for cases, hospitalizations, and deaths by race	24
Table 6. Ratio of age-adjusted rates for cases, hospitalizations, and deaths by ethnicity	25
People with Intellectual and Developmental Disabilities.....	25
Weekly COVID-19 Hospitalizations (HOSCAP)	26
ZIP code.....	26

Background

COVID-19 Weekly Report data will be finalized every Sunday at 11 p.m. PST, and the report will be published on Wednesday. Please note that the data reported here are continually being updated. For daily up-to-date information, visit the OHA COVID-19 web page: <https://govstatus.egov.com/OR-OHA-COVID-19>.

As of 11 p.m. Sunday, March 6, there have been 697,775 cases of COVID-19 reported to the Oregon Health Authority. Of these, 23,164 (3.3%) are “presumptive” cases. This includes people with COVID-19-like symptoms and close contact with a confirmed case, but who did not have a confirmatory laboratory test, and people that self-report at-home tests to public health. Though not confirmed, presumptive cases are highly likely to have

COVID-19 Weekly Report

Oregon's Weekly Surveillance Summary



COVID-19, given their specific symptoms and known exposure or at-home positive test. If a case later tests positive at a lab, that case will be recategorized as confirmed. If a case tests positive at home, the case will remain presumptive.

These data represent a snapshot of COVID-19 risk factors and clinical and demographic characteristics of cases, and they include data on cases with pending investigations. Not all cases have been interviewed at the time of this report. It is important to note that as of 1/11/2022, case investigation and contact tracing operations have been modified to prioritize outbreaks in high-consequence settings, such as healthcare, congregate care (e.g., nursing homes), corrections and settings related to our food chain. Public health is no longer calling all cases to attempt interview to assess symptoms and risks. The data shown in this report come from Oregon's electronic disease surveillance system for reportable diseases.

During the week of February 27–March 5¹ 115,142 tests for COVID-19 were performed on Oregonians; of these, 4.4% had a positive result.² This figure represents a “test-based” method, whereby all electronic lab reports received by OHA are used to calculate percent positivity.³ Detailed tables of the number of tests and percent positivity can be found online at

<https://public.tableau.com/profile/oregon.health.authority.covid.19#!/vizhome/OregonHealthAuthorityCOVID-19DataDashboard/OregonsCOVID-19ELRsbyCounty>.

Weekly Report Summary

During Monday, February 28, through Sunday, March 6, 2022, OHA logged 3,865 new cases of COVID-19 infection—down another 28% from last week's total and 94% from the peak Omicron week of January 17–23, and the lowest figure since the week of July 19–25, 2021. The decline in cases came as reported tests increased slightly (1.3%) with

¹ This date range aligns with CDC's “MMWR week.”

² Does not include antibody (serology) tests.

³ www.cdc.gov/coronavirus/2019-ncov/lab/resources/calculating-percent-positivity.html

COVID-19 Weekly Report

Oregon's Weekly Surveillance Summary



the proportion positive falling from 6.4 to 4.4%—the lowest since the week of July 12–18, 2021.

Newly identified COVID-19-associated hospitalizations declined another 35% this week—from 438 to 285. This is the lowest figure reported during 2022. There were 122 COVID-19-associated deaths reported, which is comparable to the number reported in recent weeks. Of the 697,775 cases reported in Oregon to date, 27,847 (4.0%) have been hospitalized, and 6,743 (1.0%) have died. The median age at death is 76 years. COVID-19-associated deaths remain rare among the young: 6 (0.09%) of the COVID-19-associated deaths have been in Oregonians <20 years old, and 40 (0.6%) in persons younger than 30. Data on mortality in Oregon, including deaths associated with COVID-19, are available at <https://public.tableau.com/profile/oha.center.for.health.statistics>.

Additional data are available at

<https://public.tableau.com/profile/oregon.health.authority.covid.19#!/vizhome/OregonCOVID-19CaseDemographicsandDiseaseSeverityStatewide/DemographicData>.

Clinical Characteristics and risk factors

This section of the report describes the epidemiology of Oregon's COVID-19 cases, including common symptoms experienced by COVID-19 cases, and demographic breakdowns for sex, age, race, and ethnicity. Indicators of disease severity, specifically hospitalizations and deaths, are included in the tables.

Clinical symptoms and reported risk factors

Figure 1 provides information on signs and symptoms from all COVID-19 cases. Of 697,775 cases, 237,341 (34%) reported having signs and symptoms of COVID-19. The most commonly reported symptoms are cough (n=127,315, 18.2%) and headache (n=100,033, 14.3%). Figure 2 provides information on the percentage of COVID-19 cases that report symptoms over time. Figure 3 provides information on risk factors from all COVID-19 cases. The most common risk factors are having contact with a known COVID-19 case prior to symptom onset (n=178,484, 25.6%) and having underlying medical conditions (n=528,175, 75.7%). Note that a person may report more than one sign/symptom or risk factor. Where displayed by week in this report, case data are categorized by week of reported symptom onset, not by date of case report. This results in reduced numbers in the most recent week or more due to reporting lags.

COVID-19 Weekly Report

Oregon's Weekly Surveillance Summary

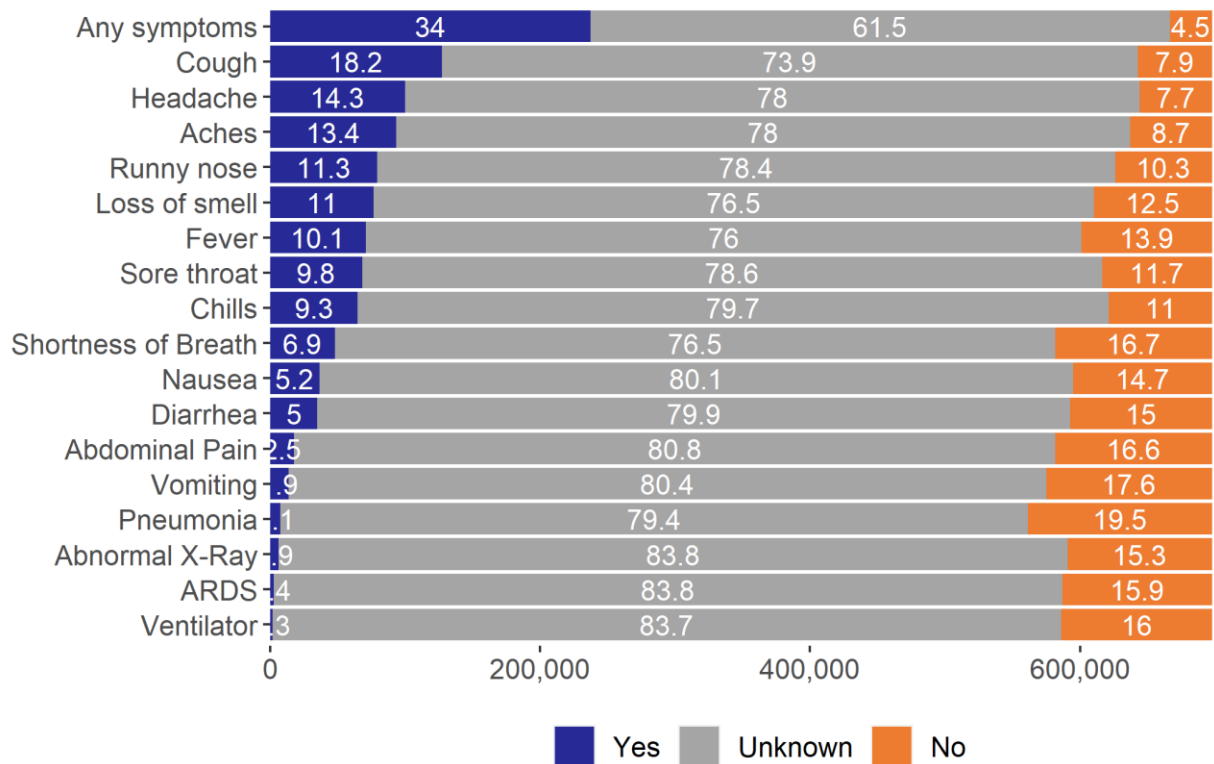


Additional data are available at

<https://public.tableau.com/app/profile/oregon.health.authority.covid.19/viz/OregonCOVID-19CaseDemographicsandDiseaseSeverityStatewide/DiseaseSeverity>;and

<https://public.tableau.com/app/profile/oregon.health.authority.covid.19/viz/OregonCOVID-19Update/DailyDataUpdate>.

Figure 1. Reported signs and symptoms for all COVID-19 cases

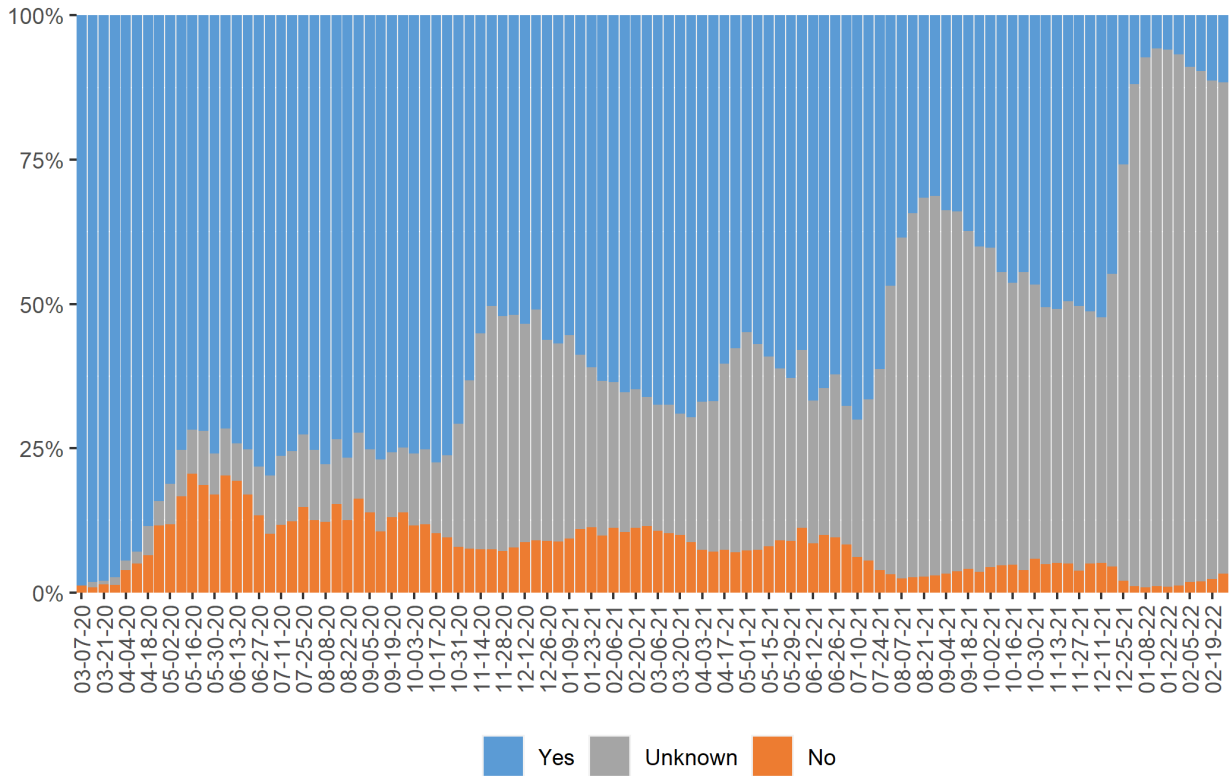


COVID-19 Weekly Report

Oregon's Weekly Surveillance Summary



Figure 2. Reported symptoms among all COVID-19 cases by week of onset

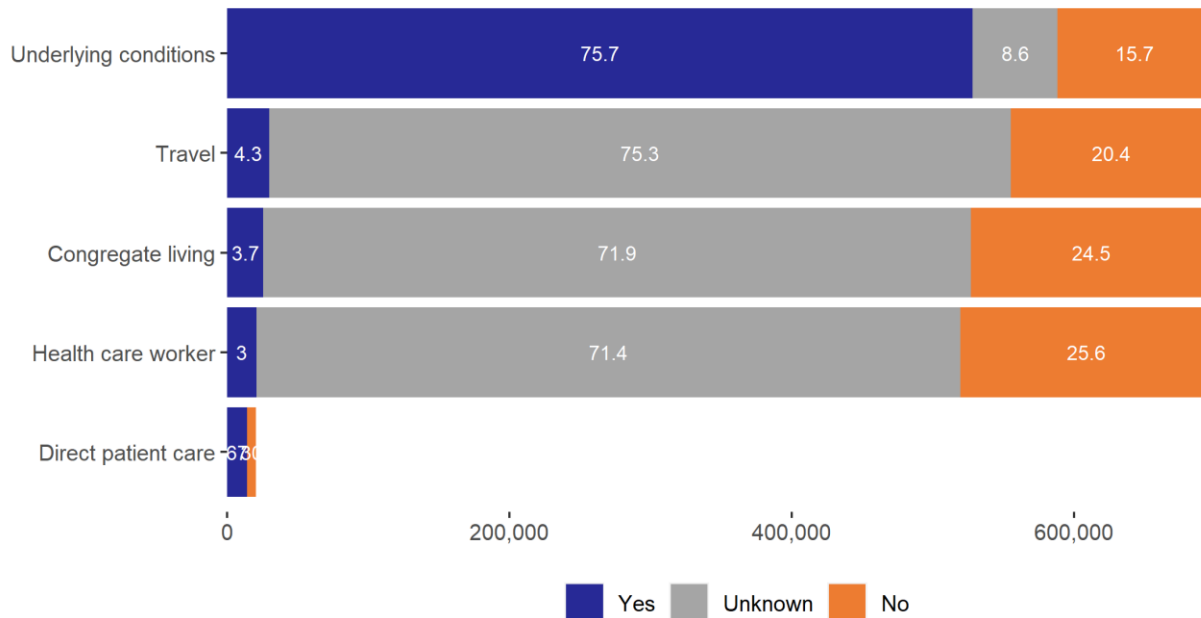


COVID-19 Weekly Report

Oregon's Weekly Surveillance Summary



Figure 3. Reported risk factors among all COVID-19 cases



Risk factor definitions:

- Congregate living situations include, but are not limited to, long-term care facilities, group homes, prisons, and shelters. Data include people with confirmed cases who live or work in congregated living situations.
- Direct patient care is only asked if a case is a healthcare worker or volunteer. The denominator is the number of healthcare workers or volunteers.
- Underlying medical conditions include cardiovascular disease, chronic liver disease, chronic lung disease, chronic renal disease, current or former smoker, diabetes mellitus, immunocompromised condition, neurologic and neurodevelopmental conditions, obesity, or other chronic diseases.

COVID-19 Weekly Report

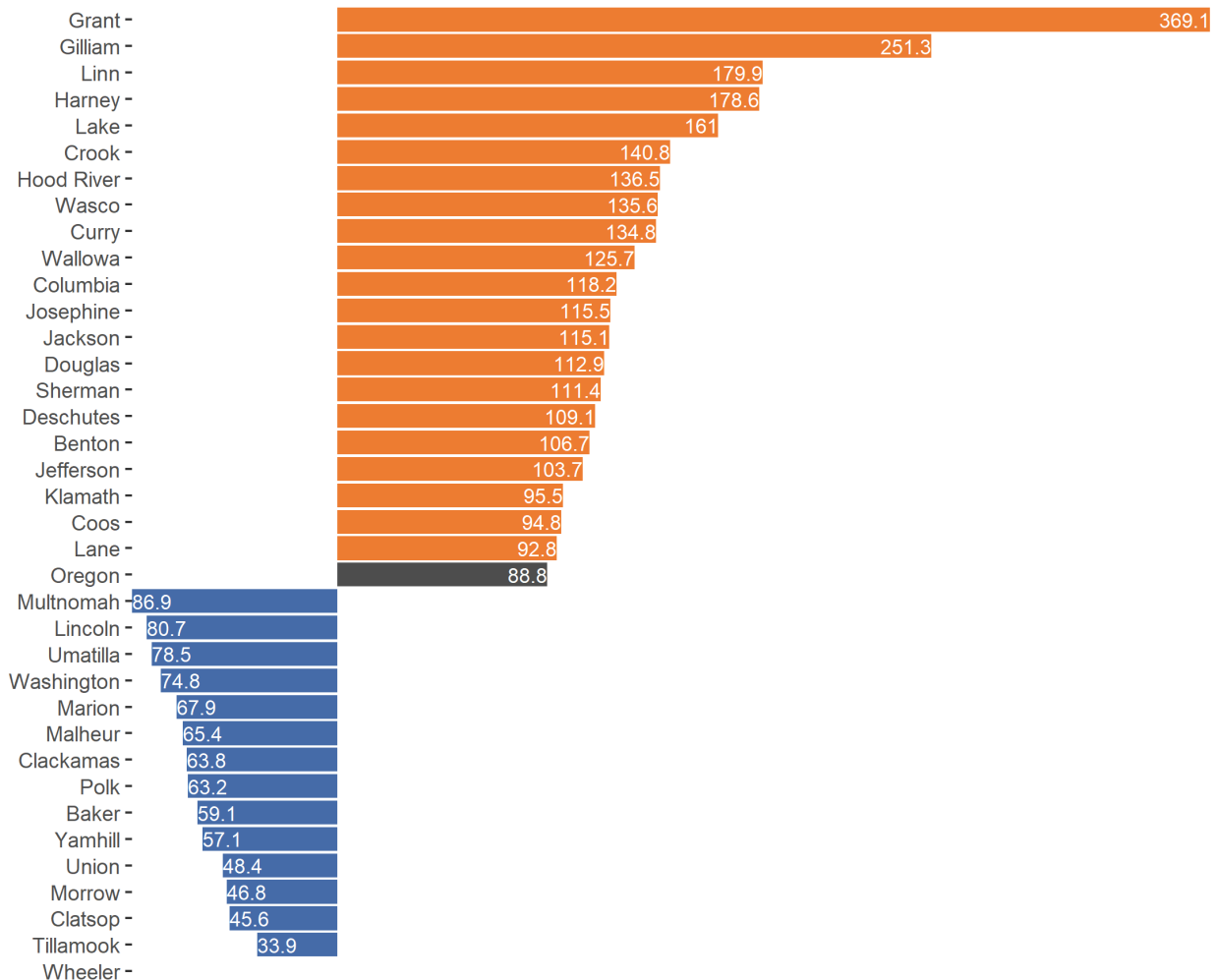
Oregon's Weekly Surveillance Summary



Geography

The following figure shows case rates by county for the most recently completed MMWR week, which is currently February 27 to March 5, 2022. Cases are displayed using the date that the case became known to public health.

Figure 4. Case rates per 100,000 population, by county



COVID-19 Weekly Report

Oregon's Weekly Surveillance Summary



1. Counties that had case rates above the case rate for the state are displayed in orange. Counties that had case rates below the case rate for the state are displayed in blue.
2. Counties that had zero cases in the time period displayed appear on the list, but do not have a bar to display.
3. Additional data are available at <https://public.tableau.com/app/profile/oregon.health.authority.covid.19/viz/Oregon-COVID-19TestingandOutcomesbyCounty/OregonsCOVID-19TestingandOutcomesbyCounty>.

Demographics

The following tables and figures show the demographic characteristics for all COVID-19 cases. The tables show case counts, case rates, and indicators of severity by sex, age, race and ethnicity. The figures show cases over time, by week of onset, for sex, age, race, and ethnicity. Figure 4 displays case rates by county, in comparison to the case rate for all of Oregon.

Sex

Table 1. Severity and rates of COVID-19 by sex

Sex	Cases	% of total cases	Cases per 100,000	Hospitalized	% Hospitalized	Deaths	Case fatality
Female	355,759	51.0	16,448.0	13,175	3.7	2,995	0.8
Male	321,879	46.1	15,290.2	14,488	4.5	3,706	1.2
Non-Binary	83	0.0		0	0.0	0	0.0
Not Available	20,054	2.9		184	0.9	42	0.2
Total	697,775	100.0	16,348.8	27,847	4.0	6,743	1.0

1. Rates are calculated using population estimates from the 2020 Annual Population Report from Portland State University's College of Urban & Public

COVID-19 Weekly Report

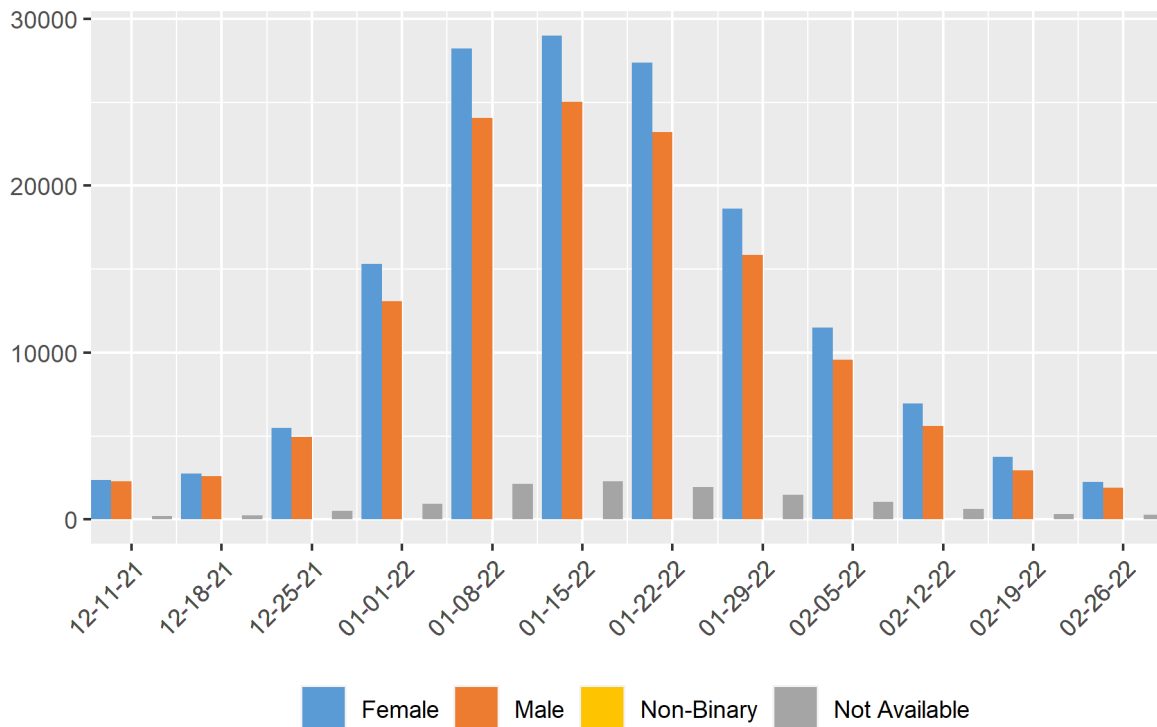
Oregon's Weekly Surveillance Summary



Affairs Population Research Center and 2019 housing and demographic data from the U.S. Census Bureau's American Community Survey (ACS).

- Additional data are available at <https://public.tableau.com/app/profile/oregon.health.authority.covid.19/viz/Oregon-COVID-19CaseDemographicsandDiseaseSeverityStatewide/DemographicDataHosp?publish=yes>.

Figure 5. Recent COVID-19 cases by sex and week of onset

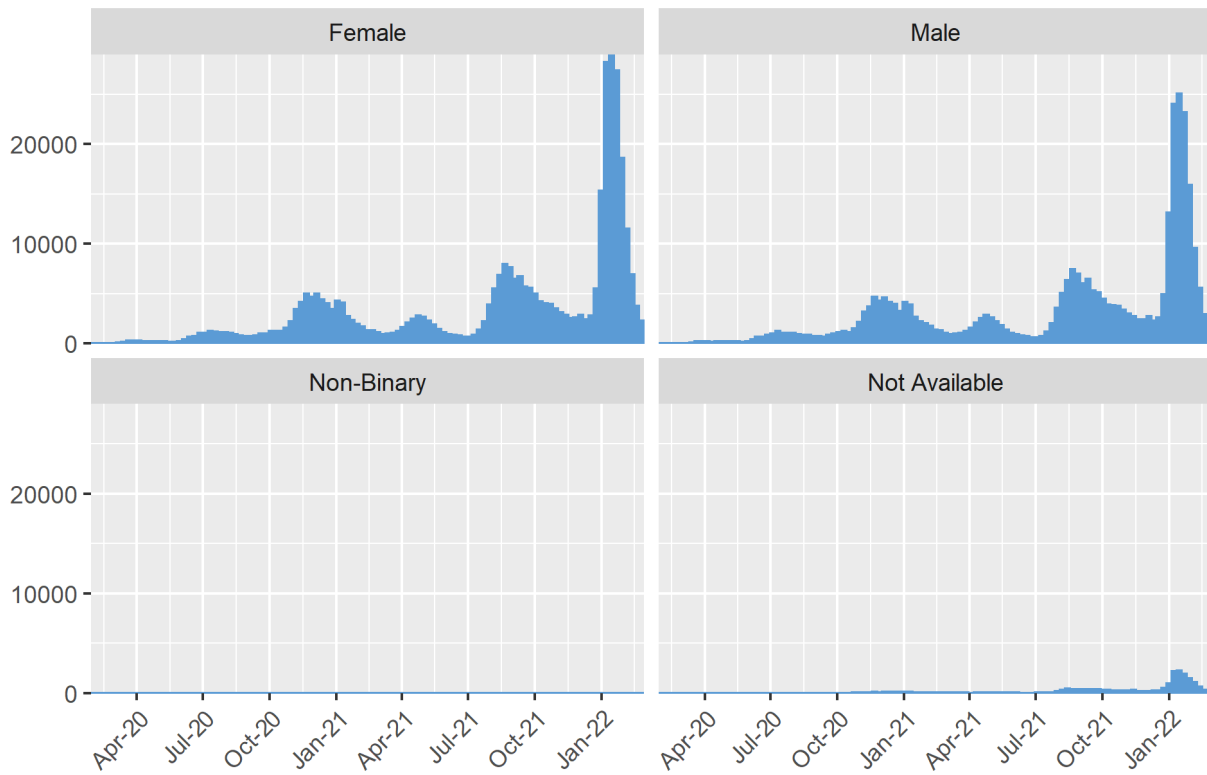


COVID-19 Weekly Report

Oregon's Weekly Surveillance Summary



Figure 6. All COVID-19 cases by sex and week of onset



COVID-19 Weekly Report

Oregon's Weekly Surveillance Summary



Age

Table 2. Severity and rates of COVID-19 by age

Age group	Cases	% of total cases	Cases per 100,000	Hospitalized	% Hospitalized	Deaths	Case fatality
0-9	63,226	9.1	13,483.9	427	0.7	2	0.0
10-19	84,199	12.1	16,685.3	473	0.6	4	0.0
20-29	132,946	19.1	24,141.6	1,679	1.3	34	0.0
30-39	122,479	17.6	20,662.2	2,243	1.8	113	0.1
40-49	101,420	14.5	18,796.9	2,858	2.8	271	0.3
50-59	81,424	11.7	15,253.0	4,160	5.1	626	0.8
60-69	57,800	8.3	10,553.3	5,696	9.9	1,261	2.2
70-79	33,068	4.7	9,398.2	5,538	16.7	1,672	5.1
80+	19,682	2.8	11,049.0	4,763	24.2	2,759	14.0
Not Available	1,531	0.2		10	0.7	1	0.1
Total	697,775	100.0	16,348.8	27,847	4.0	6,743	1.0

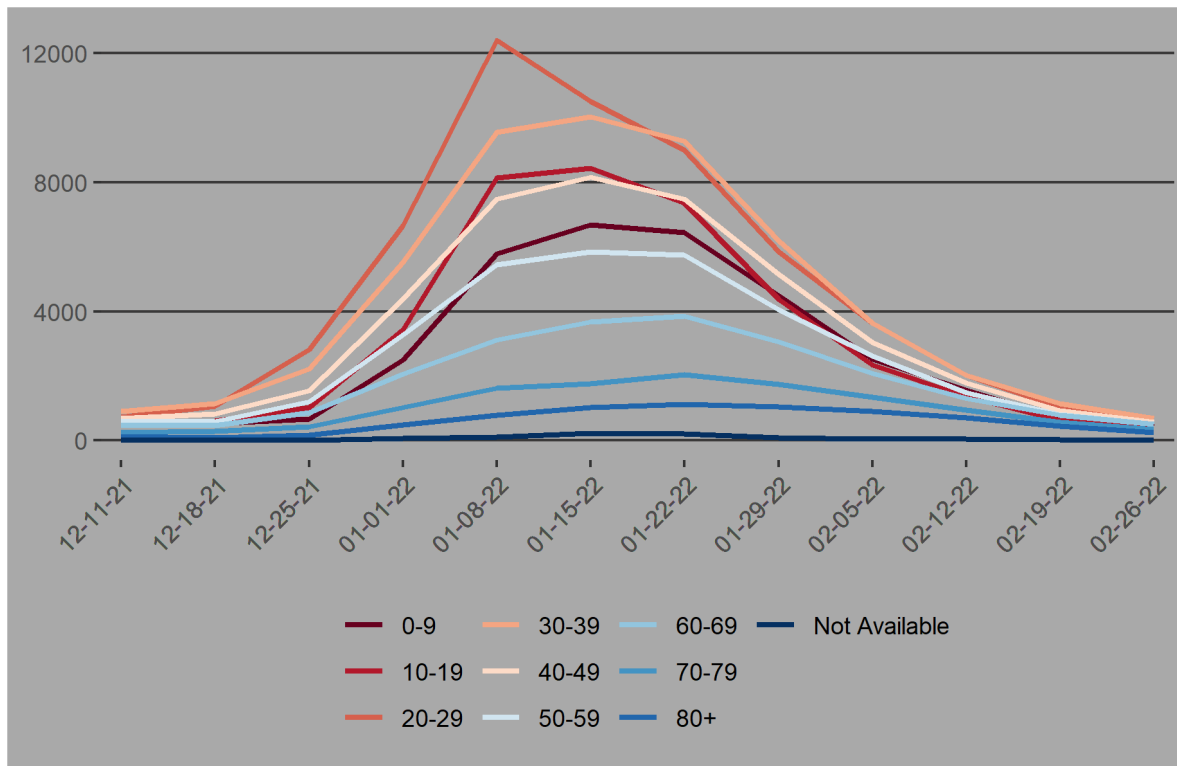
1. Rates are calculated using population estimates from the 2020 Annual Population Report from Portland State University's College of Urban & Public Affairs Population Research Center and 2019 housing and demographic data from the U.S. Census Bureau's American Community Survey (ACS).
2. Additional data are available at <https://public.tableau.com/app/profile/oregon.health.authority.covid.19/viz/Oregon-COVID-19CaseDemographicsandDiseaseSeverityStatewide/DemographicDataHosp?publish=yes>; and <https://public.tableau.com/app/profile/oregon.health.authority.covid.19/viz/Oregon-COVID-19CaseDemographicsandDiseaseSeverityStatewide/SeverityTrends>.

COVID-19 Weekly Report

Oregon's Weekly Surveillance Summary



Figure 7. Recent COVID-19 cases by age and week of onset

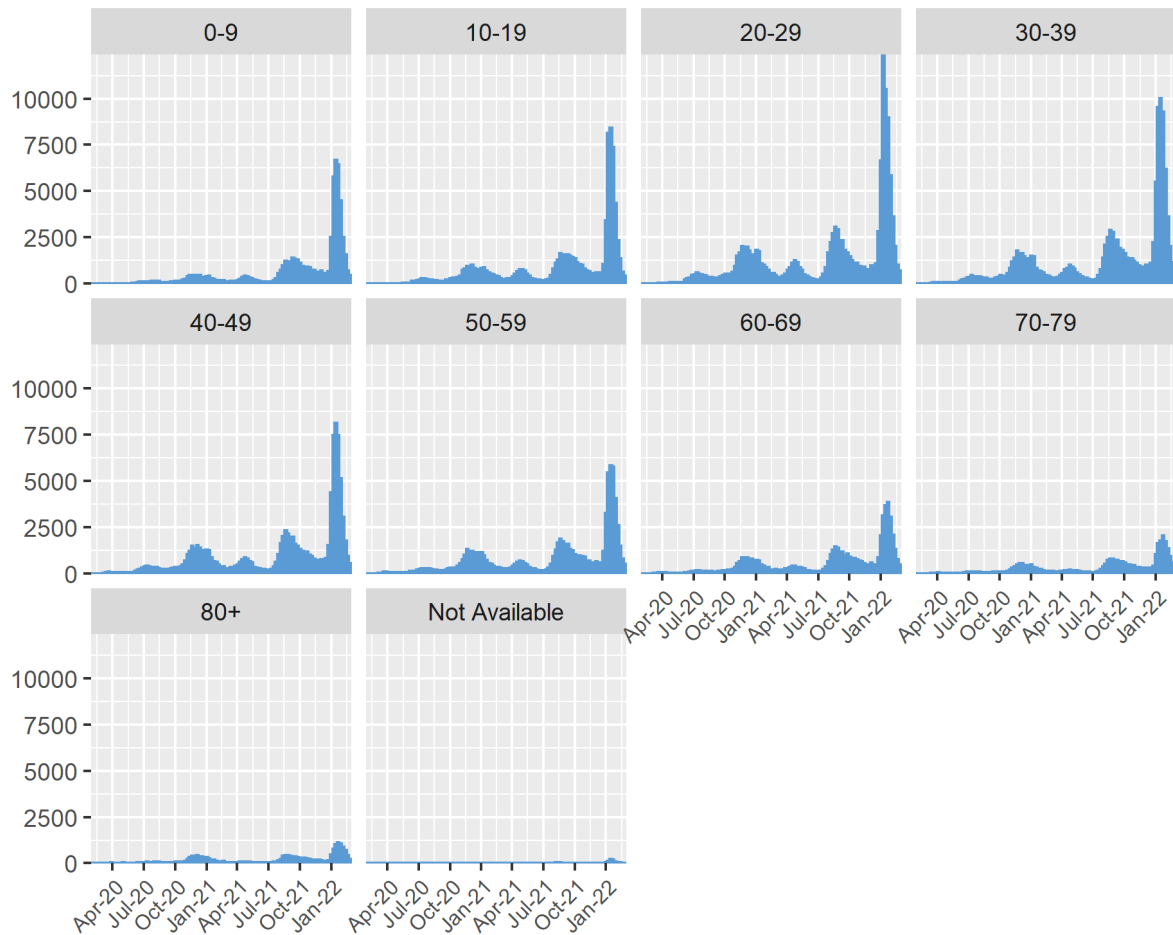


COVID-19 Weekly Report

Oregon's Weekly Surveillance Summary



Figure 8. All COVID-19 cases (counts) by age and week of onset

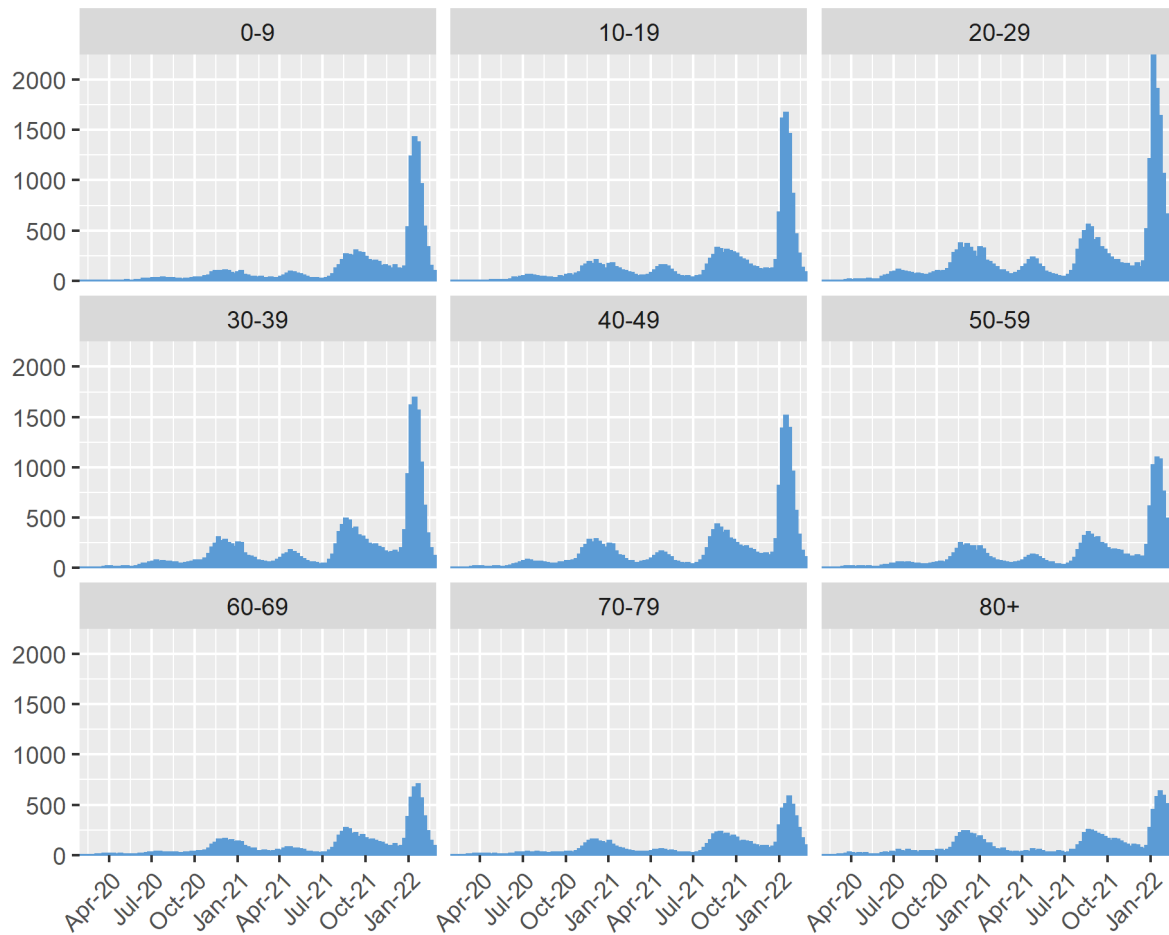


COVID-19 Weekly Report

Oregon's Weekly Surveillance Summary



Figure 9. All COVID-19 cases (case rate per 100,000) by age and week of onset



COVID-19 Weekly Report

Oregon's Weekly Surveillance Summary



Race

Table 3. Severity and rates of COVID-19 by race

Race	Cases	% of total cases	Cases per 100,000	Hospitalized	% Hospitalized	Deaths	Case fatality
> 1 race	7,545	1.1	3,680.6	348	4.6	76	1.0
American Indian/Alaska Native	10,456	1.5	21,051.4	556	5.3	115	1.1
Asian	17,606	2.5	9,433.9	649	3.7	114	0.6
Black	15,452	2.2	19,003.1	879	5.7	113	0.7
Not Available	200,434	28.7		3,508	1.8	1,342	0.7
Other	86,029	12.3		3,207	3.7	456	0.5
Pacific Islander	2,620	0.4	15,248.9	221	8.4	29	1.1
White	357,633	51.3	9,941.3	18,479	5.2	4,498	1.3
Total	697,775	100.0	16,348.8	27,847	4.0	6,743	1.0

1. During the case investigation, people are asked to self-report their race, ethnicity, tribal affiliation, country of origin, or ancestry.
2. Rates are calculated using population estimates from the 2020 Annual Population Report from Portland State University's College of Urban & Public Affairs Population Research Center and 2019 housing and demographic data from the U.S. Census Bureau's American Community Survey (ACS).
3. Persons for which race information was not available were not included in these estimates. The number of persons with race data unavailable can be found in Table 3.
4. 59,720 (69.4%) of the 86,029 persons who identify as "Other" race also self-identify as Hispanic or Latino.

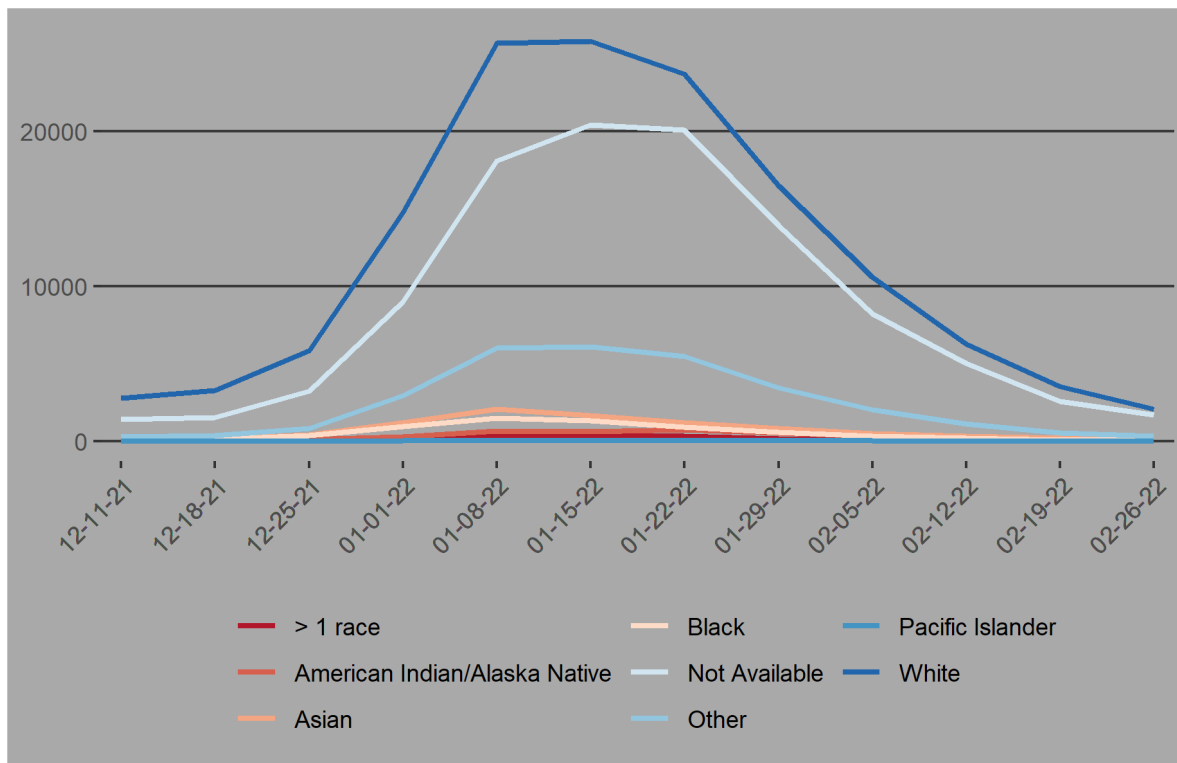
COVID-19 Weekly Report

Oregon's Weekly Surveillance Summary



- Additional data are available at <https://public.tableau.com/app/profile/oregon.health.authority.covid.19/viz/Oregon-COVID-19CaseDemographicsandDiseaseSeverityStatewide/DemographicDataHosp?publish=yes>; and <https://public.tableau.com/app/profile/oregon.health.authority.covid.19/viz/Oregon-COVID-19CaseDemographicsandDiseaseSeverityStatewide/SeverityTrends>.

Figure 10. Recent COVID-19 cases by race and week of onset

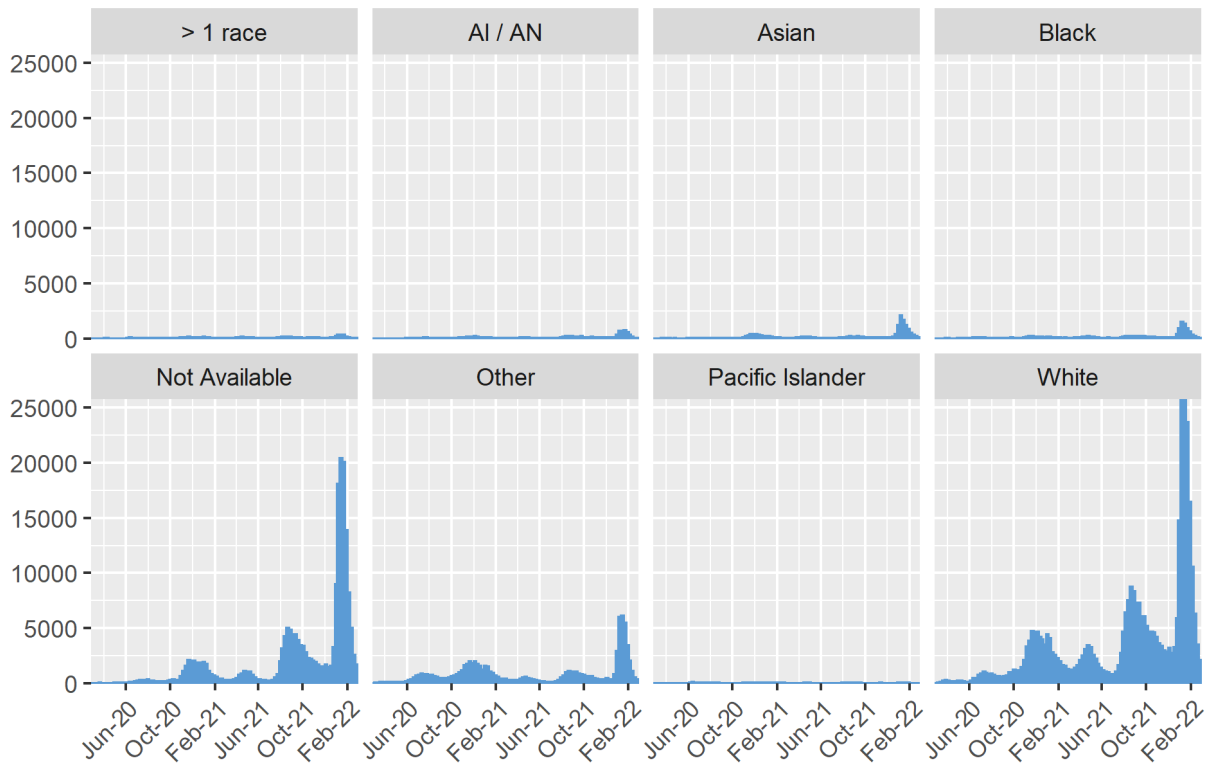


COVID-19 Weekly Report

Oregon's Weekly Surveillance Summary



Figure 11. All COVID-19 cases (counts) by race and week of onset

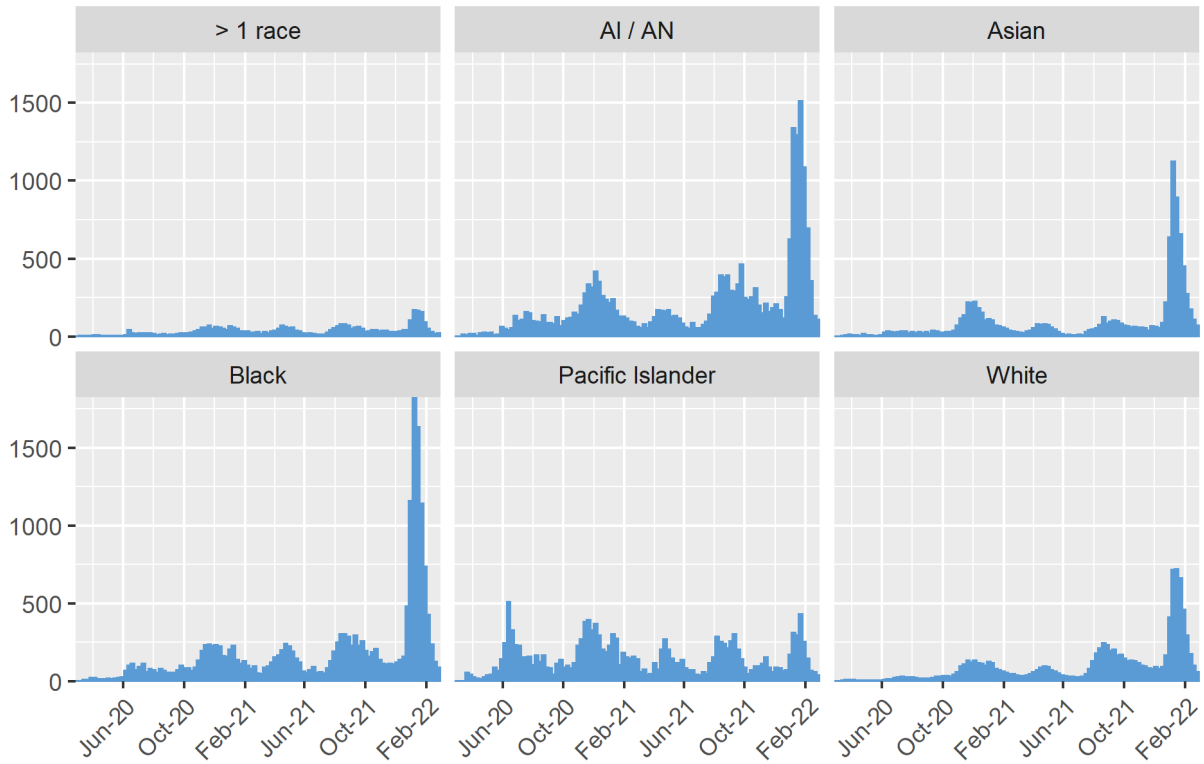


COVID-19 Weekly Report

Oregon's Weekly Surveillance Summary



Figure 12. All COVID-19 cases (case rates per 100,000) by race and week of onset



COVID-19 Weekly Report

Oregon's Weekly Surveillance Summary



Ethnicity

Table 4. Severity and rates of COVID-19 by ethnicity

Ethnicity	Cases	% of total cases	Cases per 100,000	Hospitalized	% Hospitalized	Deaths	Case fatality rate
Hispanic	95,613	13.7	17,232.3	3,242	3.4	392	0.4
Not Hispanic	343,253	49.2	9,244.1	17,578	5.1	4,055	1.2
Unknown	258,909	37.1		7,027	2.7	2,296	0.9
Total	697,775	100.0	16,348.8	27,847	4.0	6,743	1.0

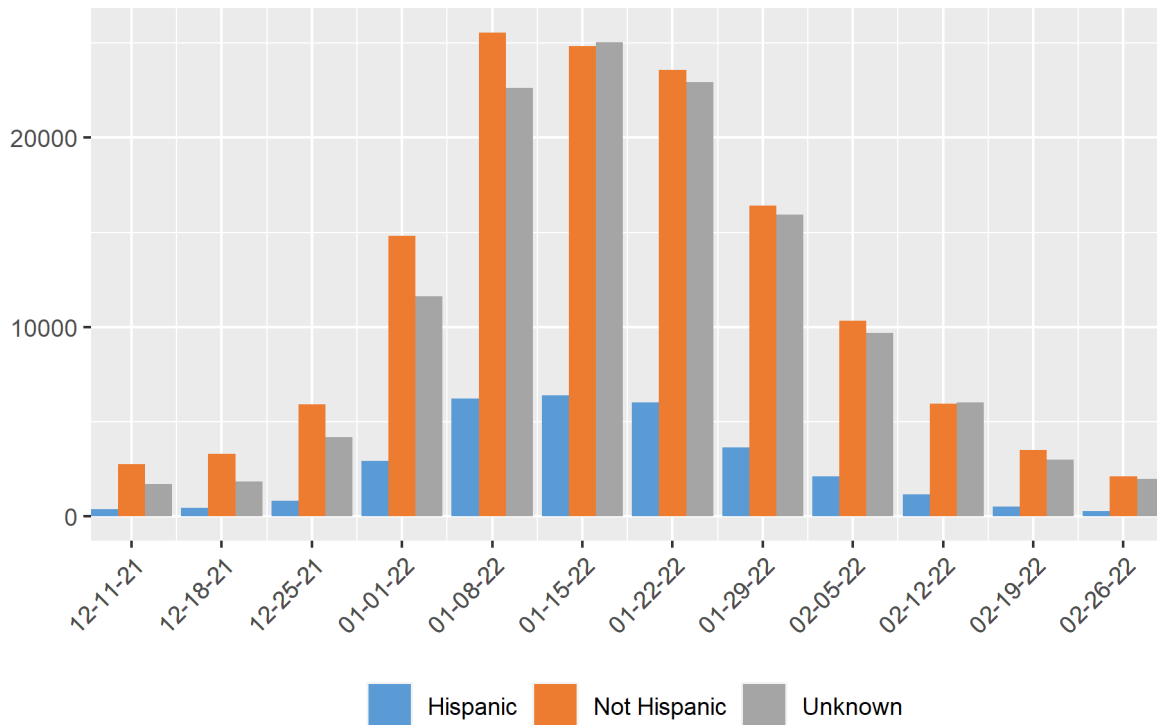
1. Rates are calculated using population estimates from the 2020 Annual Population Report from Portland State University's College of Urban & Public Affairs Population Research Center and 2019 housing and demographic data from the U.S. Census Bureau's American Community Survey (ACS).
2. Additional data are available at <https://public.tableau.com/app/profile/oregon.health.authority.covid.19/viz/Oregon-COVID-19CaseDemographicsandDiseaseSeverityStatewide/DemographicDataHosp?publish=yes>; and <https://public.tableau.com/app/profile/oregon.health.authority.covid.19/viz/Oregon-COVID-19CaseDemographicsandDiseaseSeverityStatewide/SeverityTrends>.

COVID-19 Weekly Report

Oregon's Weekly Surveillance Summary



Figure 13. Recent COVID-19 cases by ethnicity and week of onset

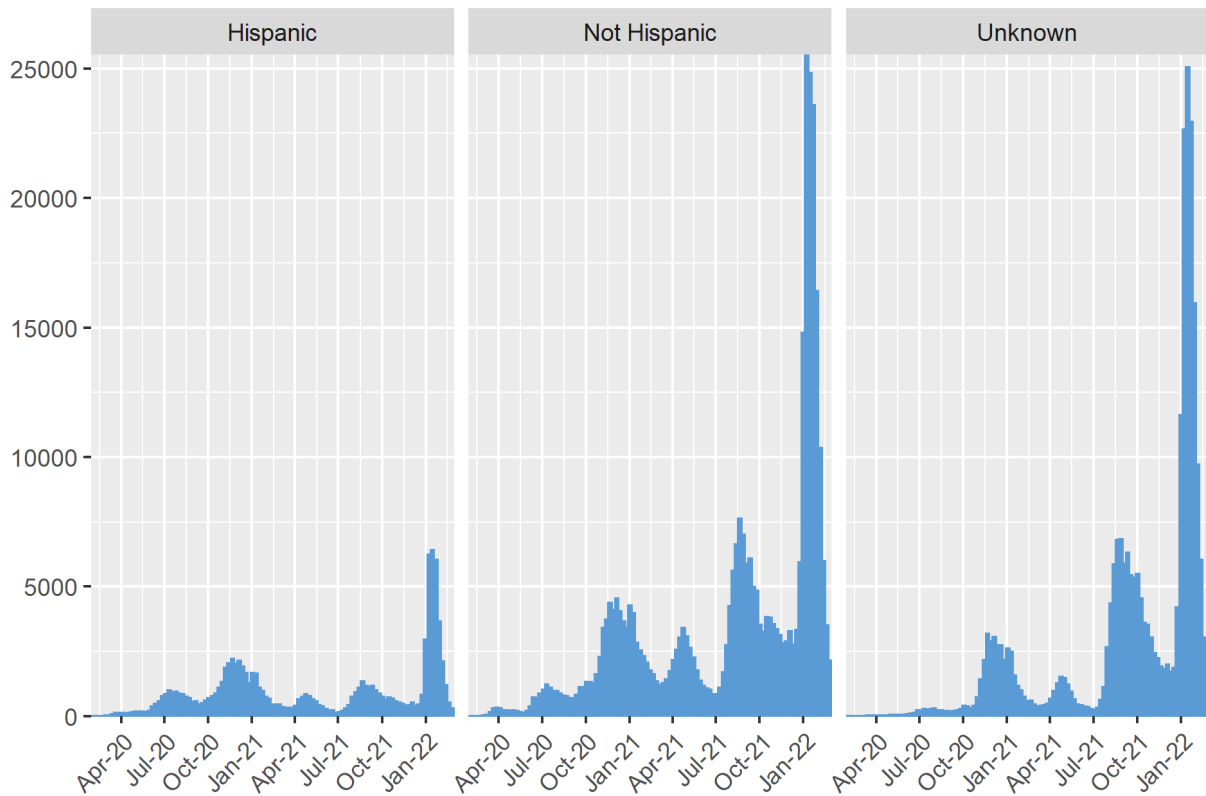


COVID-19 Weekly Report

Oregon's Weekly Surveillance Summary



Figure 14. All COVID-19 cases (counts) by ethnicity and week of onset

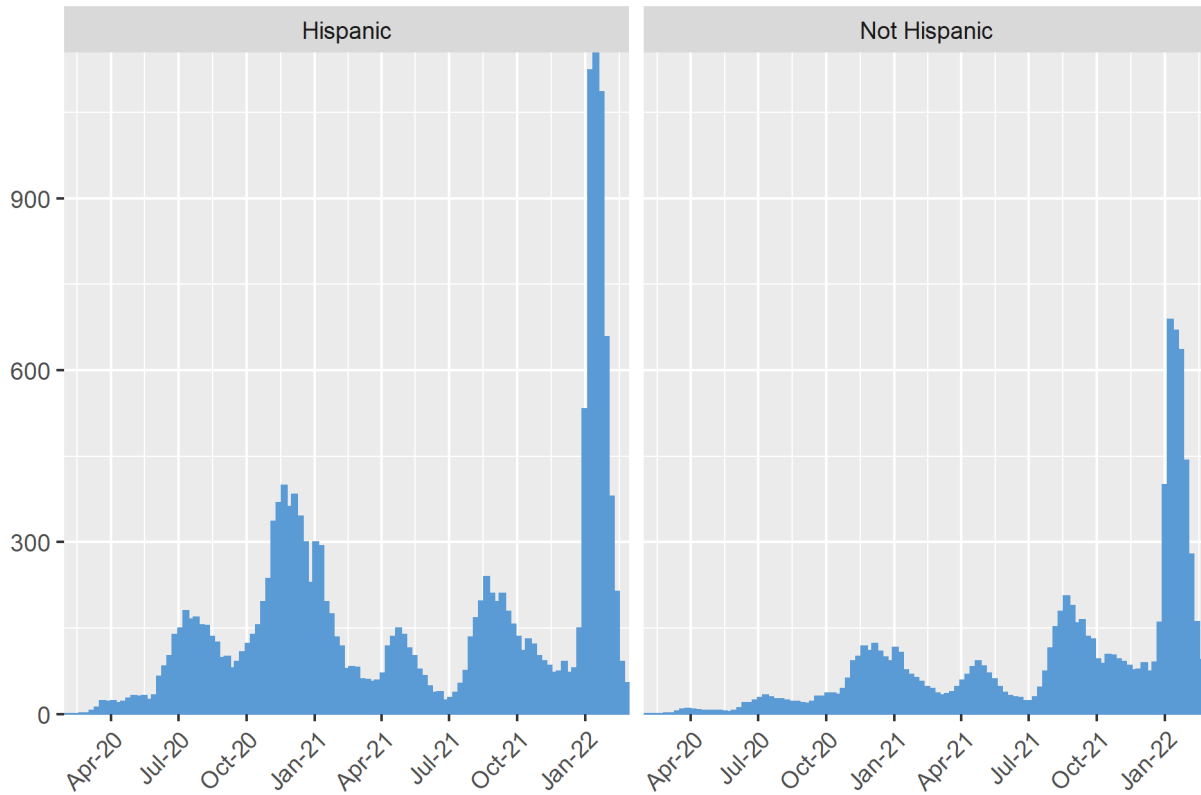


COVID-19 Weekly Report

Oregon's Weekly Surveillance Summary



Figure 15. All COVID-19 cases (case rates per 100,000) by ethnicity and week of onset



COVID-19 Weekly Report

Oregon's Weekly Surveillance Summary



Age-adjustment

Tables 5 and 6 show the ratio of age-adjusted rates of COVID-19 for cases, hospitalizations, and deaths by race and ethnicity. Each table compares the rates of cases, hospitalizations, and deaths between each group and a reference group and accounts for differences in population distributions in each group.

Table 5. Ratio of age-adjusted rates for cases, hospitalizations, and deaths by race

Age-adjusted rate ratios of cases, hospitalizations, and deaths, compared to white persons.

Race	Cases	Hospitalizations	Deaths
> 1 race	0.4	0.7	0.9
American Indian/Alaska Native	2.1	2.7	2.9
Asian	0.9	0.9	0.8
Black	1.8	2.9	2.1
Pacific Islander	1.5	4.3	4.2
White	1.0	1.0	1.0

1. During the case investigation, people are asked to self-report their race, ethnicity, tribal affiliation, country of origin, or ancestry.
2. U.S. Census Bureau; American Community Survey, 2019 American Community Survey 5-Year Estimates.
3. Persons for which race information was not available were not included in these estimates. The number of persons with race data unavailable can be found in Table 3.
4. Additional data are available at <https://www.oregon.gov/oha/covid19/Documents/DataReports/Age-Adjusted-Report-02-17-2022.pdf>.

COVID-19 Weekly Report

Oregon's Weekly Surveillance Summary



Table 6. Ratio of age-adjusted rates for cases, hospitalizations, and deaths by ethnicity

Age-adjusted rate ratios of cases, hospitalizations, and deaths, compared to non-Hispanic.

Ethnicity	Cases	Hospitalizations	Deaths
Hispanic	1.6	2.2	1.9
Non-Hispanic	1.0	1.0	1.0

1. During the case investigation, people are asked to self-report their race, ethnicity, tribal affiliation, country of origin, or ancestry.
2. U.S. Census Bureau; American Community Survey, 2019 American Community Survey 5-Year Estimates.
3. Persons for which ethnicity information was not available were not included in these estimates. The number of persons with ethnicity data unavailable can be found in Table 4.
4. Additional data are available at <https://www.oregon.gov/oha/covid19/Documents/DataReports/Age-Adjusted-Report-02-17-2022.pdf>.

People with Intellectual and Developmental Disabilities

As of January 9, 2022 OHA is aware of 2,397 people with intellectual or developmental disabilities who have had COVID-19 to date. This includes individuals who live in congregate settings and in family or individual homes. To date, there are 49 deaths among people with intellectual or developmental disabilities. This number is from conducting a match between the ODHS Office of Developmental Disabilities Services client list and the Oregon COVID-19 case database. OHA will update this number on a quarterly basis.

COVID-19 Weekly Report

Oregon's Weekly Surveillance Summary



Additional information about the ODDS program and COVID-19 can be found here: <https://www.oregon.gov/dhs/SENIORS-DISABILITIES/DD/ODDS%20Resource%20Library/ODDS-Residential-COVID-19-Report.pdf>.

ODDS data is based on self-reports from providers and case management entities and therefore may differ from testing data received from the Oregon Health Authority.

Weekly COVID-19 Hospitalizations (HOSCAP)

OHA is publishing data on the number of COVID-19 hospitalizations by hospital in the prior week; data are from HOSCAP. Maps and tables containing the 7-day average of hospitalizations by region and hospital are available online at:

<https://public.tableau.com/app/profile/oregon.health.authority.covid.19/viz/OregonCOVID-19HospitalCapacity/HospitalizationbyFacility>.

Information on Oregon's current hospital bed capacity by region is available online at: <https://public.tableau.com/app/profile/oregon.health.authority.covid.19/viz/OregonCOVID-19HospitalCapacity/BedAvailabilitybyRegion>.

ZIP code

OHA is publishing data on cases at the ZIP code level, available online at:

<https://public.tableau.com/profile/oregon.health.authority.covid.19#!/vizhome/OregonCOVID-19CasesbyZIPCode/OregonsCOVID-19CasesbyZipCode?publish=yes>.

Summary table of all zip codes available here:

<https://public.tableau.com/profile/oregon.health.authority.covid.19#!/vizhome/OregonCOVID-19CasesbyZIPCode-SummaryTable/CasesbyZIPCodeSummaryTable?publish=yes>.

Document accessibility: For individuals with disabilities or individuals who speak a language other than English, OHA can provide information in alternate formats such as

COVID-19 Weekly Report

Oregon's Weekly Surveillance Summary



translations, large print, or braille. Contact the Health Information Center at 1-971-673-2411, 711 TTY or COVID19.LanguageAccess@dhsosha.state.or.us.