

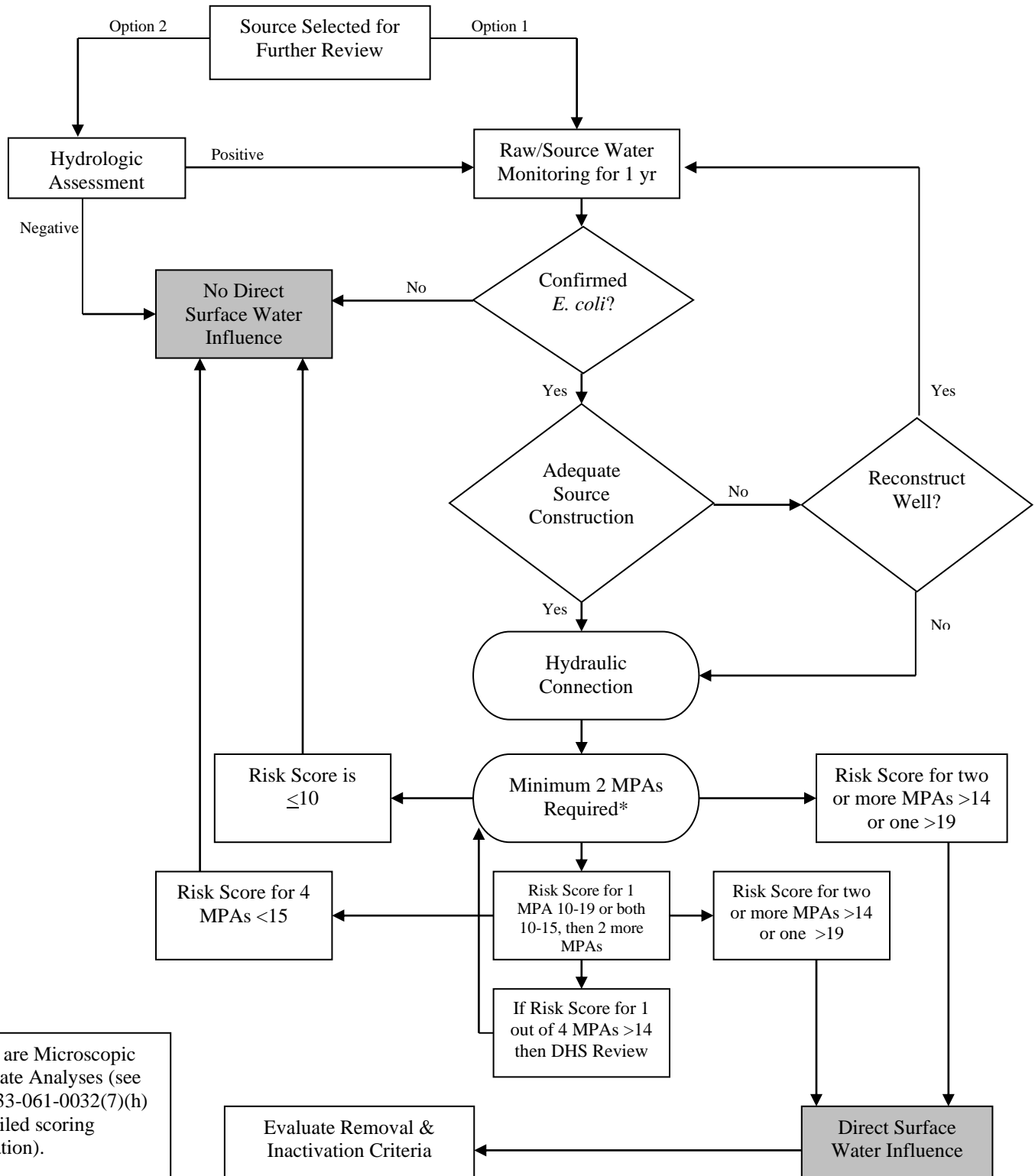
Source Review Criteria

1. Proximity to surface water.
2. Confirmed or suspected coliform bacteria.
3. Source Water Assessment identified source as highly sensitive.

Threshold

<500 ft fractured bedrock; <200 ft coarse sand, gravel and boulder; <100 ft sand & gravel; <75 ft sand
History of source-related presence.
Aquifer characteristics, vadose zone characteristics, monitoring history or well construction.

Further review by the water system occurs if threshold of criteria 1 and either 2 or 3 are met.



*MPAs are Microscopic Particulate Analyses (see OAR 333-061-0032(7)(h) for detailed scoring information).