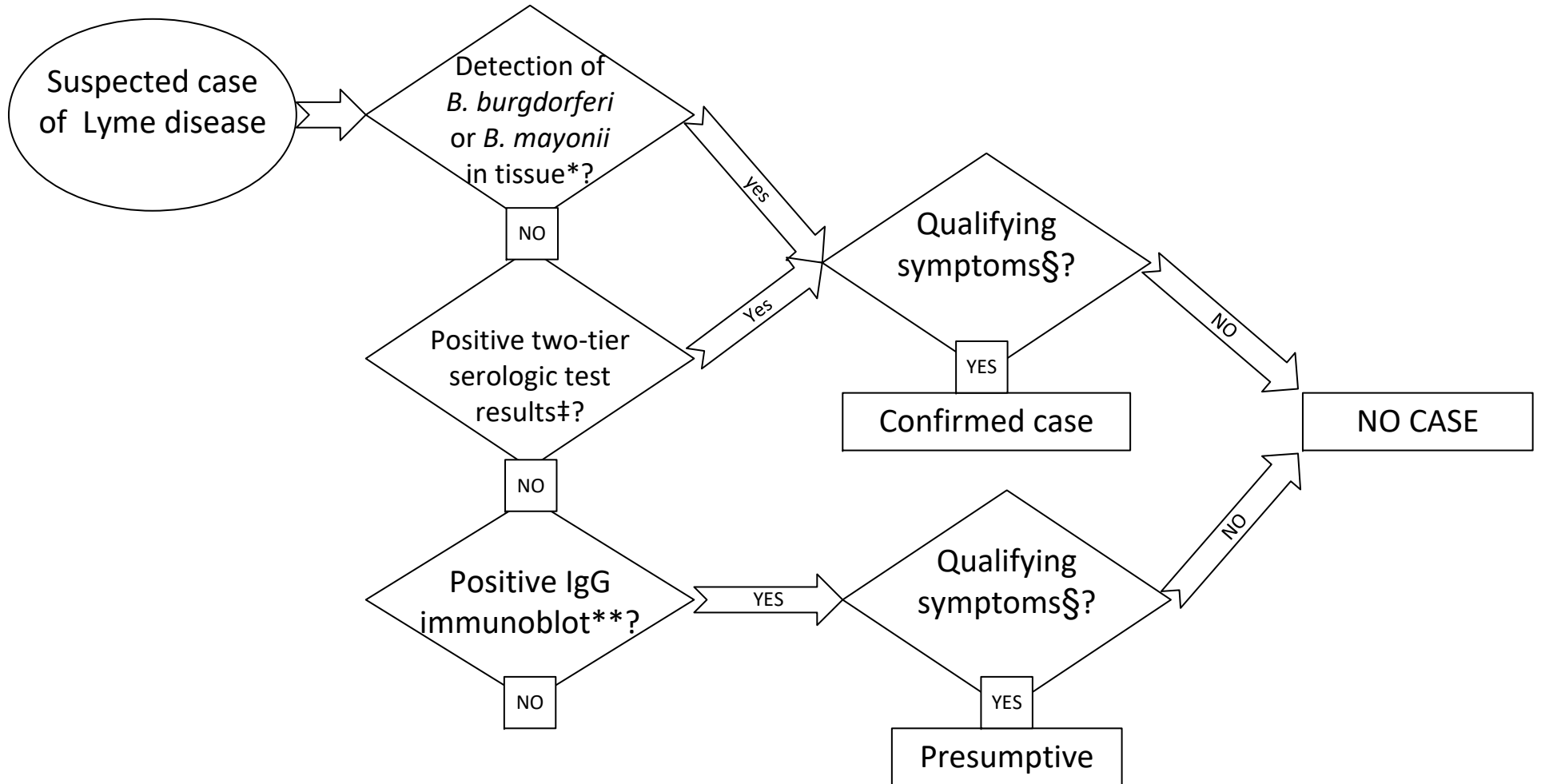


CSTE 2022 Lyme Disease Case Definition



*by isolation in culture, NAAT, or IHC

§ Physician-diagnosed erythema migrans measured at ≥ 5 cm diameter, brief bouts of swelling in one or a few joints, VII palsy, radiculoneuropathy, lymphocytic meningitis, encephalitis, encephalomyelitis or 1st- or 2nd-degree atrioventricular conduction deficits.

‡positive or equivocal first-tier assay, e.g., enzyme immunoassay (EIA) or immunofluorescence assay (IFA) for IgM, IgG, or combination; followed by concordant positive IgM or IgG immunoblot,** or by a different equivocal or positive EIA.

**Positive immunoblots: IgM: at least 2 of 3 bands: 24 (OspC), 39 (BmpA), 41 (Fla) kDa. IgG: at least 5 of 10 bands: 18, 24 (OspC), 28, 30, 39 (BmpA), 41 (Fla), 45, 58, 66 (not GroEL), 93 kDa.