

Oregon's 1115 Medicaid Waiver

# All Come Webinar

October 9, 2024



# Zoom Meeting Tips

## Use **chat** to ask questions.

- We'd like this session to be interactive, so we'll be saving the chat.
- If you want to ask a question verbally, feel free to raise your hand.

## This webinar is being **recorded**.

- We'll share it with participants after the presentation.

For **live captioning**, please click on the “cc” button at the bottom of your screen.



# Today's Agenda

- 1** | **1115 Medicaid Waiver Background**
- 2** | **HRSN Housing Service Definitions and Timeline**
- 3** | **HRSN Outreach & Engagement**
- 4** | **Community Capacity Building Funds (CCBF) Update**
- 5** | **Climate Device Update**
- 6** | **Question and Answer**



# 1115 Medicaid Waiver Background



# What is the Oregon Health Plan?

## Medicaid

Medicaid is the nation's public health care program. In Oregon we call it the Oregon Health Plan (OHP).

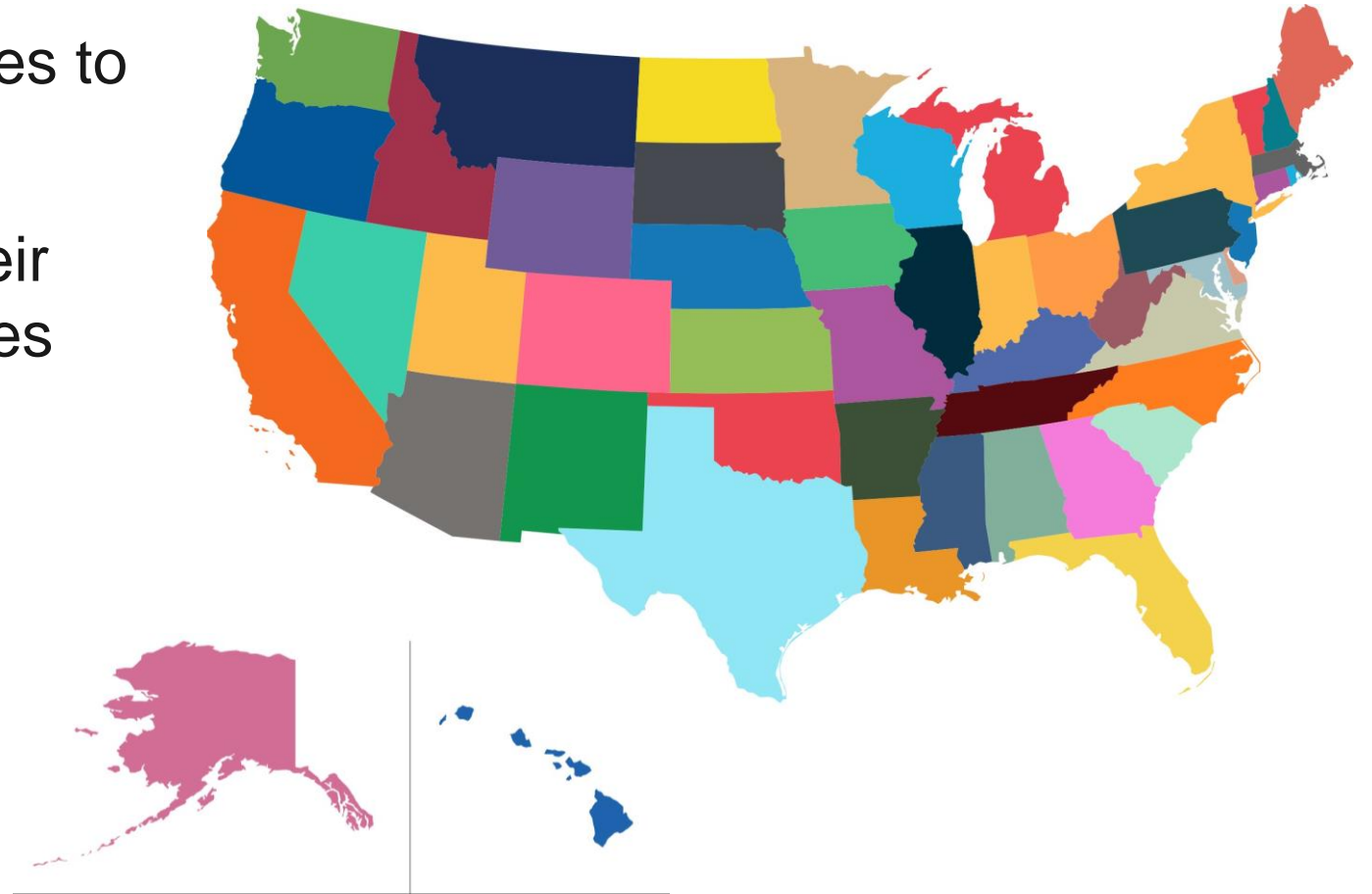
## Oregon Health Plan

The Oregon Health Plan (OHP) is free health care coverage for low-income children, teens, and adults who live in Oregon. You can apply for OHP at any time during the year.



# What is a Medicaid Waiver?

- States must follow federal rules to get Medicaid funding.
- States can ask **to change** their Medicaid rules. These changes are called a Medicaid waiver.



# Oregon 1115 Waiver Key Changes

---



## Extended Oregon Health Plan (OHP) Eligibility and Benefits

The Waiver expands Medicaid coverage:

- Continuous OHP eligibility and enrollment for children up to age six\*†
- Two years of continuous enrollment for OHP members ages six and older\*†
- Coverage for health-related social needs (HRSN) supports including housing, nutrition and climate supports\*
- Coverage for young adults with special health care needs up to age 26\*
- Coverage for a limited set of services for people in a carceral setting 90-days prior to release

\* Indicates an approved change that is first-in-the-nation

† These benefits are in effect and began in July 2023

# Health-Related Social Needs (HRSN) Housing Service Definitions and Timeline





# HRSN Housing Supports

---

**Goal:** The goal of HRSN Housing Supports is to help people to stay in their current housing and prevent homelessness

**When:** Available to some OHP members on November 1, 2024

**What:** Tenancy Services, Rent and Utilities Assistance, Storage Fees, Home Accessibility Modifications and Remediations



# HRSN Housing Supports Benefit

---



Housing tenancy sustaining services



Rent for up to six months, including past due amounts



Utility set up and costs for up to six months, including past due amounts

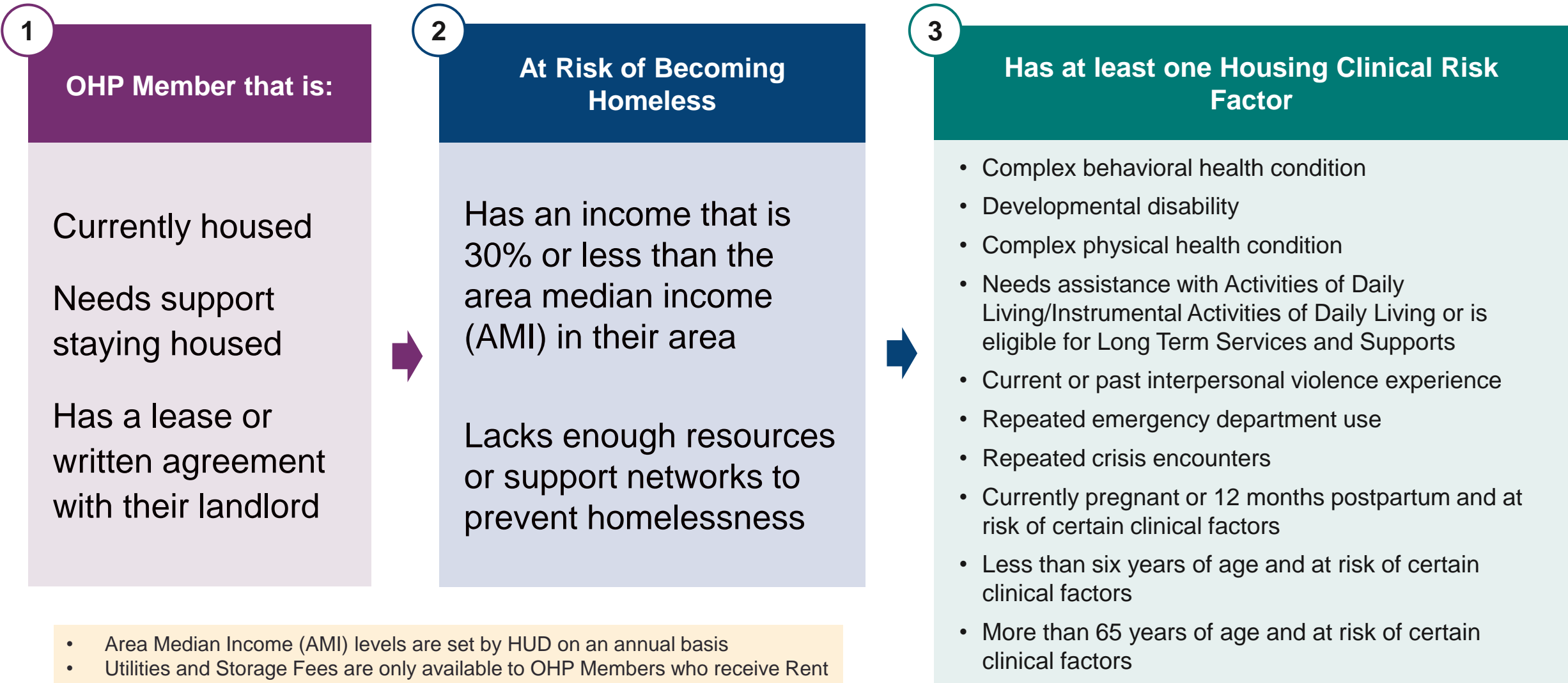


Storage fees



Medically-necessary home accessibility modifications and remediations, such as ramp and grab bar installation, pest control, heavy duty cleaning, and related hotel costs

# Eligibility for HRSN Rent and Tenancy Services



# Eligibility for HRSN Home Modifications/Remediations

1

## Is a Current OHP Member and has at least one Housing Clinical Risk Factor

- Complex behavioral health condition
- Developmental disability
- Complex physical health condition
- Needs assistance with Activities of Daily Living/Instrumental Activities of Daily Living or is eligible for Long Term Services and Supports
- Current or past interpersonal violence experience
- Repeated emergency department use
- Repeated crisis encounters
- Currently pregnant or 12 months postpartum and at risk of certain clinical factors
- Less than six years of age and at risk of certain clinical factors
- More than 65 years of age and at risk of certain clinical factors

2

## Belongs to an HRSN Covered Population

- Adults and Youth Discharged from an HRSN Eligible Behavioral Health Facility
- Adults and Youth Released from Incarceration
- Individuals currently or previously involved in Oregon's Child Welfare system
- Individuals Transitioning to Dual Medicaid and Medicare Status
- Individuals who meet the At-Risk of Homeless; or
- Young Adults with Special Health Care Needs (YSHCN) ages 19 and 20 (starting January 2025)

3

## Additional Eligibility Requirements

- Member must need the home modification or remediation to help or prevent their health condition
- Landlord approval is needed before delivery (if the Member is a renter)

# Examples of Eligible Populations for 11/1/24



- Member with a qualifying chronic disease is behind on rent due to job loss and needs rental assistance until job is replaced.
- Member has a serious medical event (e.g., hospitalization; broken leg) and needs rental assistance while unable to earn income.
- Family has moved into friend's home (i.e., "is doubled up") and needs rental assistance to stay in that housing.
- Family at risk of eviction due to severe lack of upkeep of the home and needs chore services to maintain housing.
- Five-year-old with special health care needs needs rental assistance while parent takes time off from work to support child's needs.

# Health-Related Social Needs (HRSN) Outreach & Engagement



# HRSN Outreach and Engagement Services

---

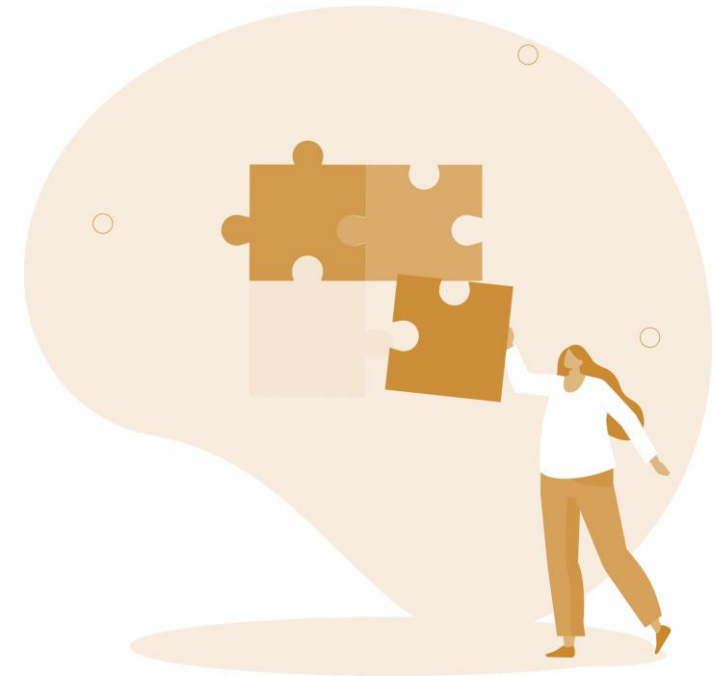
## Goal:

- Identify members who may be eligible for HRSN services and help them access those services
- Connect members to additional healthcare and non-healthcare services to address holistic health and well-being needs
- Be readily accessible, culturally specific and responsive

**When:** Some activities available now, expanded services on November 1, 2024

**What:** Resource navigation and connections to various services including legal, peer, medical, and more

HRSN = Health-Related Social Needs



# Eligibility for HRSN O&E Services

---

To be eligible for HRSN O&E services, a person needs to be presumed\* to:

- 1 Be a current OHP member
- 2 Be part of an eligible group
- 3 Have an HRSN clinical risk factor
- 4 Have a need for additional resources or programs to improve their health and wellbeing (social risk factor)\*

\*Presumed means the provider believes the member is part of one of these groups from existing information or the member tells them directly

HRSN = Health-Related Social Needs  
O&E = Outreach and Engagement

\*Other HRSN benefits have their own additional criteria. Visit the [HRSN provider webpage](#) to learn more.



# 1. OHP Member

---

1

## Be a current OHP member

To be eligible for HRSN services, a person must be on the Oregon Health Plan (OHP) enrolled in Open Card or a Coordinated Care Organization (CCO)

## 2. Eligible Group

---

2

### Be to be part of an eligible group

**HRSN eligible groups include people who are or have been:**

- Released from jail or prison (incarceration) in the past year
- Discharged from an HRSN-eligible behavioral health facility in the past year
- Current or past involvement in the Oregon child welfare system
- Transitioning from Medicaid-only to dual eligibility (Medicaid and Medicare) status within the next three months or have transitioned in the past nine months
- Homeless
- At-risk of becoming homeless

# 3. HRSN Clinical Risk Factor

3

## Have an HRSN clinical risk factor

**Being younger than 6 years old**

**Being 65 years old or older**

**A long lasting, newly disabling, or worsening physical health condition**

**A long lasting, newly disabling, or worsening behavioral health condition**

**Developmental or intellectual disability**

**Difficulty with self-care and daily activities**

**Experience of abuse or personal violence**

**Pregnant or gave birth in past 12 months**

**Frequent care in emergency rooms or crisis services**

### **Health conditions that:**

- Take a temperature-controlled medication
- Use a powered medical device

## 4. Need for Services

---

4

**Have a need for services that improve their health and wellbeing (social risk factor)**

- **To be eligible for HRSN outreach and engagement services**, you must believe that the member has a need for these services to support their health and wellbeing (also called the Social Risk Factor)
- Each HRSN service area (like housing, nutrition, and climate) has additional eligibility requirements

# Eligibility Recap for HRSN O&E

1

Is a current OHP Member

2

## Be Part of an Eligible Group

- An adult or youth discharged from an HRSN Eligible Behavioral Health Facility
- An adult or youth released from incarceration
- Involved in the Oregon child welfare system
- Transitioning from Medicaid-only to dual coverage
- At risk of becoming homeless
- Homeless

3

## Have an HRSN Clinical Risk Factor

- Being a child under age 6
- Being 65 years old or older
- Complex physical health conditions
- Complex behavioral health condition
- Developmental or intellectual disability
- Difficulty with self-care and daily activities
- Experiencing abuse or neglect
- Pregnant or gave birth in past 12 months
- Repeated use of emergency room or crisis services
- Health conditions that:
  - Require temperature-controlled medication
  - Require a powered medical device

4

## Have a Need

Member must need HRSN Outreach & Engagement Services to support their health and wellbeing

HRSN = Health-Related Social Needs  
O&E = Outreach and Engagement

\*Presumed means the provider believes the member meets these criteria

# Community Capacity Building Funds (CCBF) Update



# What are Community Capacity Building Funds?

---

- Community Capacity Building Funds (CCBF) were provided by Oregon Health Authority (OHA) to health-related social needs (HRSN) providers and organizations that will become HRSN providers
- Coordinated Care Organizations (CCOs) administered the CCBF Grant Program earlier in 2024 and these funds are currently being sent to those awarded grant funds
- These funds will support organizations to develop what they need to be able to deliver HRSN services to eligible OHP members

# CCBF Grant Application and Funding Summary

---

Across Oregon via the 2024 CCBF Grant program:

- More than **\$37 million** was awarded to 161 organizations\*
- 30 organizations received awards from **multiple CCOs**
- CCOs received a set amount of funds, plus an additional amount based on 2024 enrollment
- CCOs were required to report on key elements of organizations that applied and were awarded grants, which will inform future years of CCBF

\* This represents 97% of total funds for 2024 as some funds are still being awarded and disbursed



# CCBF Grant Application and Funding Summary

Community Care Organization (CCO)	Number of Grants Awarded	Total Funds Awarded
Advanced Health	5	\$495,124.00
AllCare CCO	20	\$1,995,158.90
Cascade Health Alliance	3	\$1,106,210.00
Columbia Pacific Coordinated Care Organization	9	\$1,342,928.00
Eastern Oregon Coordinated Care Organization	13	\$1,867,216.67
Health Share of Oregon	38	\$10,776,267.00
InterCommunity Health Network Coordinated Care Organization	34	\$2,430,789.45
Jackson Care Connect	13	\$2,010,368.00
PacificSource Community Solutions - Central Oregon Region	5	\$2,270,427.00
PacificSource Community Solutions - Columbia Gorge Region	4	\$880,867.00
PacificSource Community Solutions - Lane	16	\$2,670,185.75
PacificSource Community Solutions - Marion/Polk	16	\$3,865,669.95
Trillium Community Health Plan - Southwest	10	\$1,339,150.87
Trillium Community Health Plan - Tri-County	12	\$1,398,085.35
Umpqua Health Alliance	5	\$1,395,559.00
Yamhill Community Care	9	\$1,313,569.00
<b>Total Amount Awarded</b>		<b>\$37,157,575.94</b>

\* This represents 97% of total funds for 2024 as some funds are still being awarded and disbursed

# CCBF Grant Application and Funding Summary

---

- CCOs awarded more funding to organizations that provide housing benefits
- Most of the funding went to support workforce development
- Funding was granted relatively evenly across geographic regions
- Most funding went to organizations that already had a relationship with a CCO

# Next Steps: CCBF 2024 Grant Program Review

---

What information are we using to inform our understanding of the success and challenges of the CCBF 2024 Grant Program?



**Qualitative Feedback from CCOs and HRSN Partners**



**CCBF Application and Funding Data**



**2024 CCBF Feedback Survey Data**



**CCO CCBF Feedback Survey Data**

# Climate Benefits Update



# HRSN Climate Benefits

---

**Goal:** The goal of HRSN Climate Benefits is to help keep people safe during extreme weather and wildfire smoke.


**When:** Available now!

**What:**

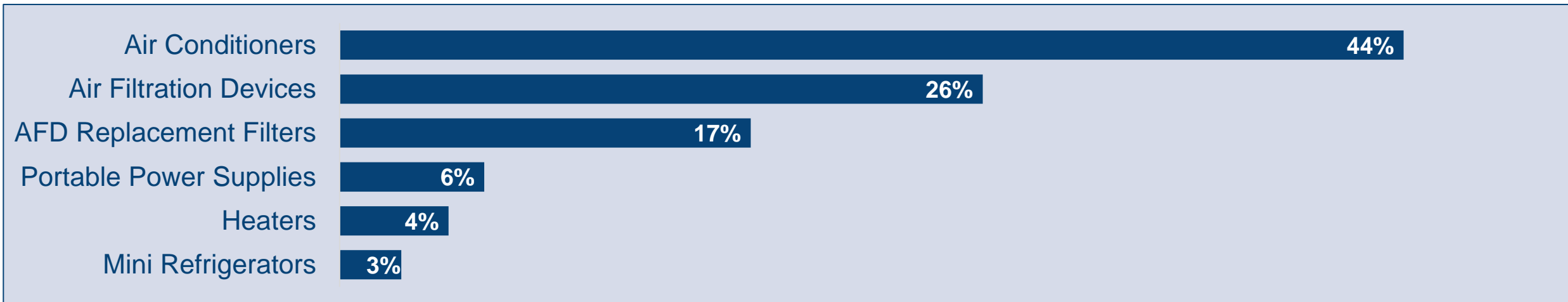
- Air conditioners, heaters, and air filters to provide clean air and healthy temperatures
- Mini fridges to keep medication cold during a power outage
- Portable power supplies to operate medical equipment

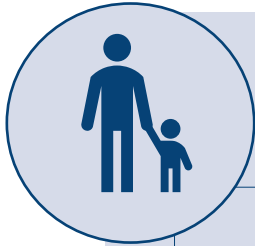


 **1,699** Climate devices were delivered to Oregon Health Plan members

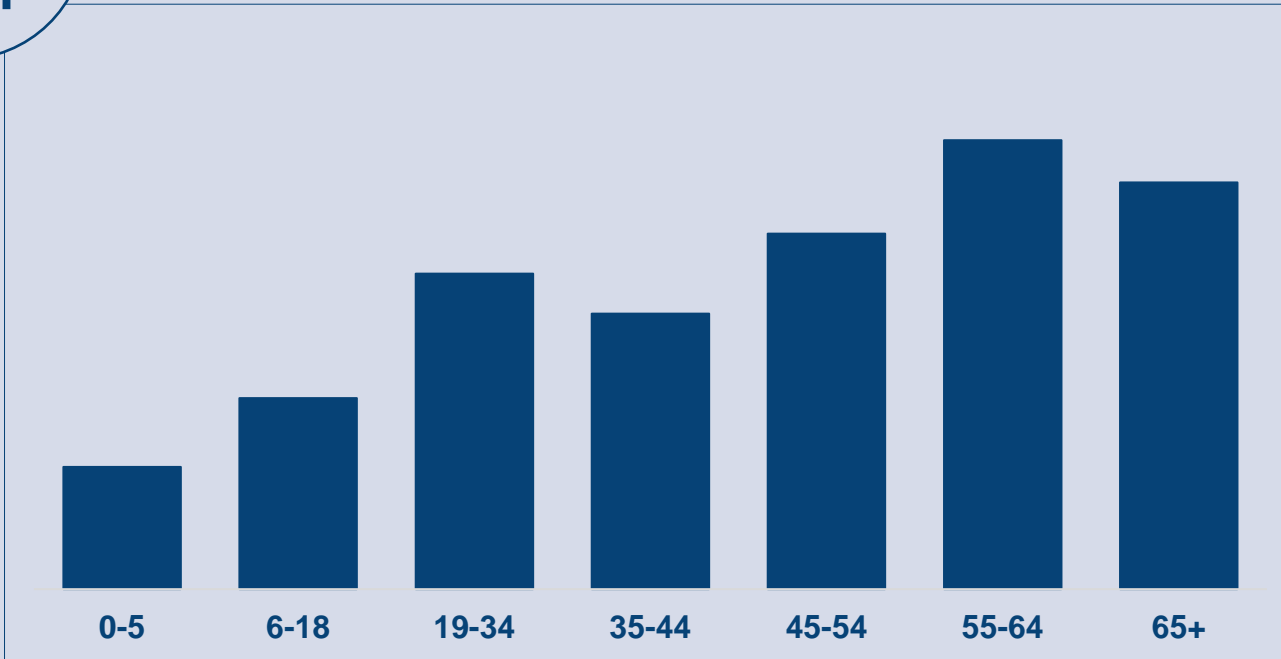
 **955** Oregon Health Plan members received climate devices\*

 **44%** of devices delivered were air conditioners

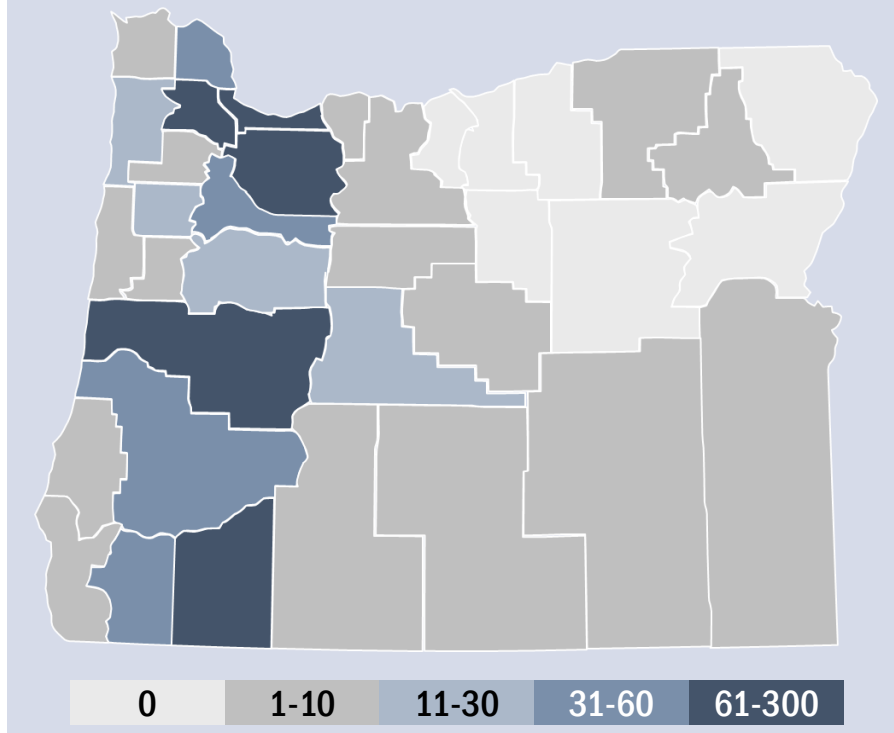




Oregon Health Plan members of **all ages** have received devices through the climate benefit



Most Oregon Health plan members that have received climate devices reside in Multnomah (29%), Clackamas (9%), Lane (9%), Jackson (9%), and Washington (9%) counties.



**65%** of members that received a device were homeless or at risk of becoming homeless\*

# Question & Answer



What questions do you have?





# Upcoming Sessions

## Dates and topics

- ★ **November 13**  
Benefit Update Project (BUP)
- ★ **December 11**  
Health-Related Social Needs (HRSN)  
Services - Nutrition



# Stay Connected!

For questions related to today's presentation, please contact us:

[1115waiver.renewal@odhsoha.oregon.gov](mailto:1115waiver.renewal@odhsoha.oregon.gov)

For additional updates and information, check our website:

[www.oregon.gov/1115waiverrenewal](http://www.oregon.gov/1115waiverrenewal)

Subscribe to updates that will be sent out in the coming months:

<https://public.govdelivery.com/accounts/ORHA/signup/37696>





# Thank you for your collaboration and ongoing partnership!

