

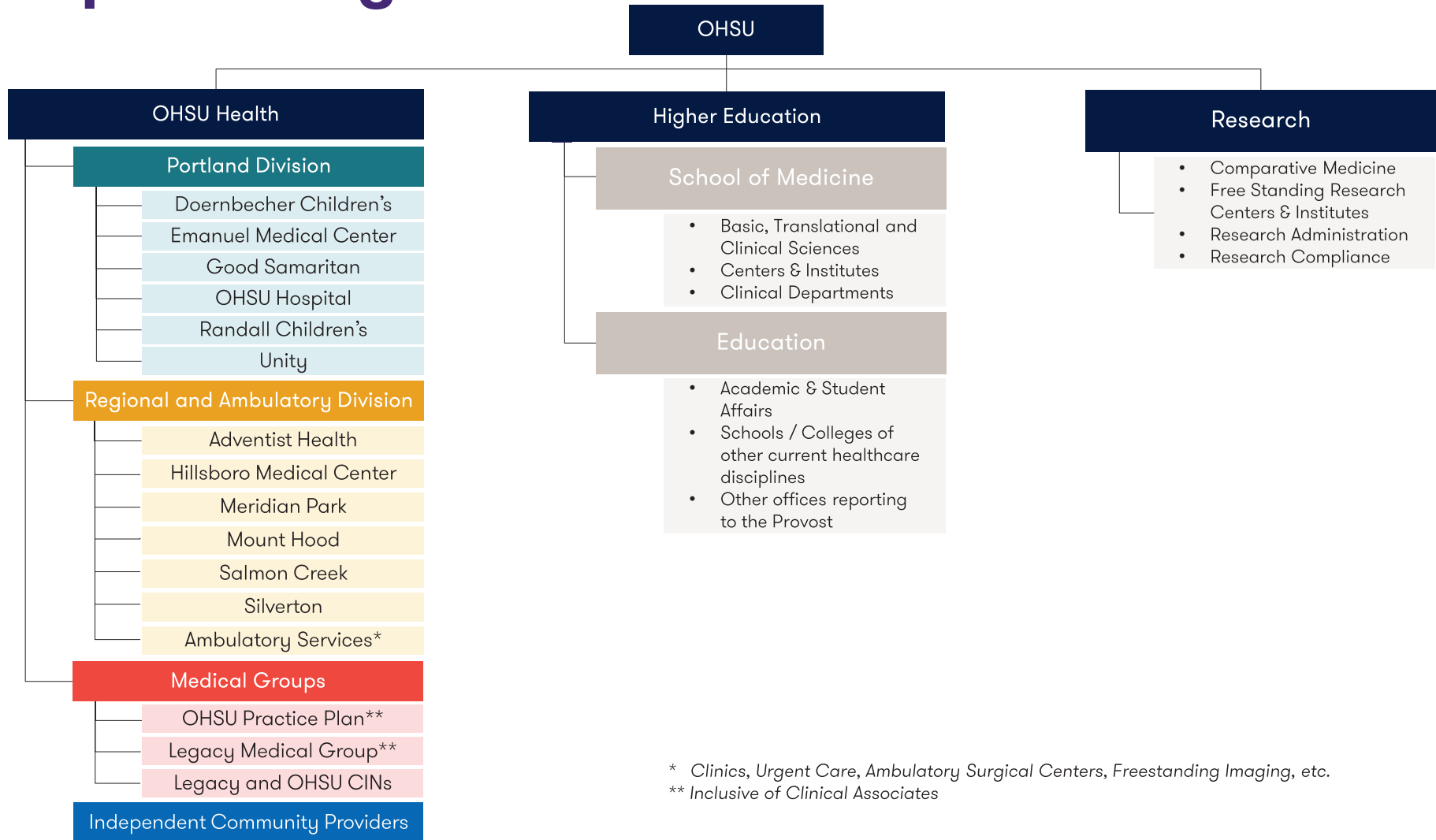
**Supplemental Materials F: Post-Transaction Organizational Structure Diagram**

# Proposed Organizational and Provider Models

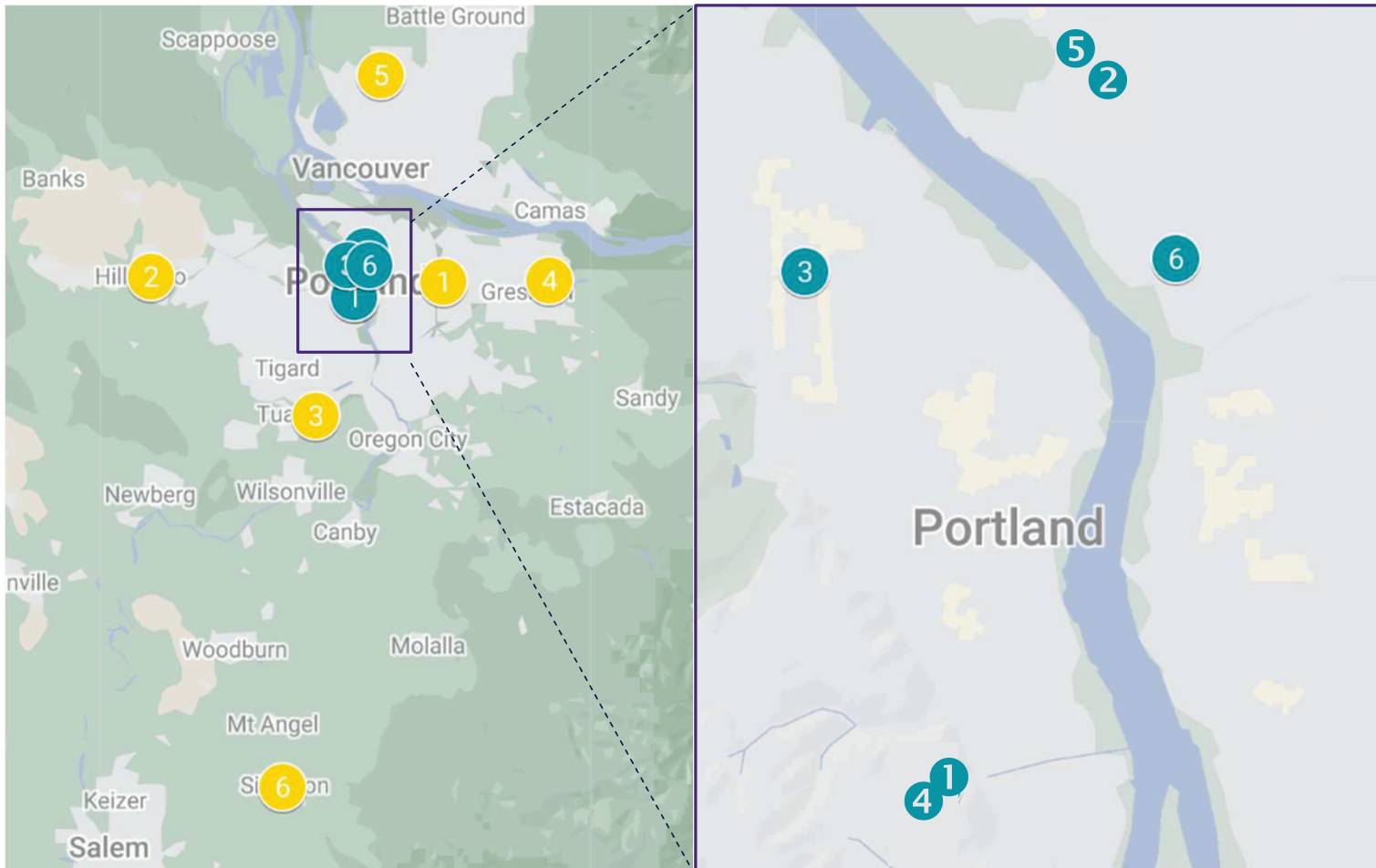
# Background

- The Organizational and Provider model is a high-level representation of how the clinical enterprise will be organized.
- The model was discussed with select administrative and clinical leadership at both organizations and their input was incorporated. There was deep discussion about service lines and population health which will inform integration planning.
- The divisional structure and entities in each division will be in Exhibits C and D of the System Combination Agreement. Both organizations recognize that every service at Legacy or OHSU is not captured in proposed model. Prior to the Closing, OHSU and Legacy Health will work collaboratively to further update Exhibit C and Exhibit D.

# Proposed Organizational Model



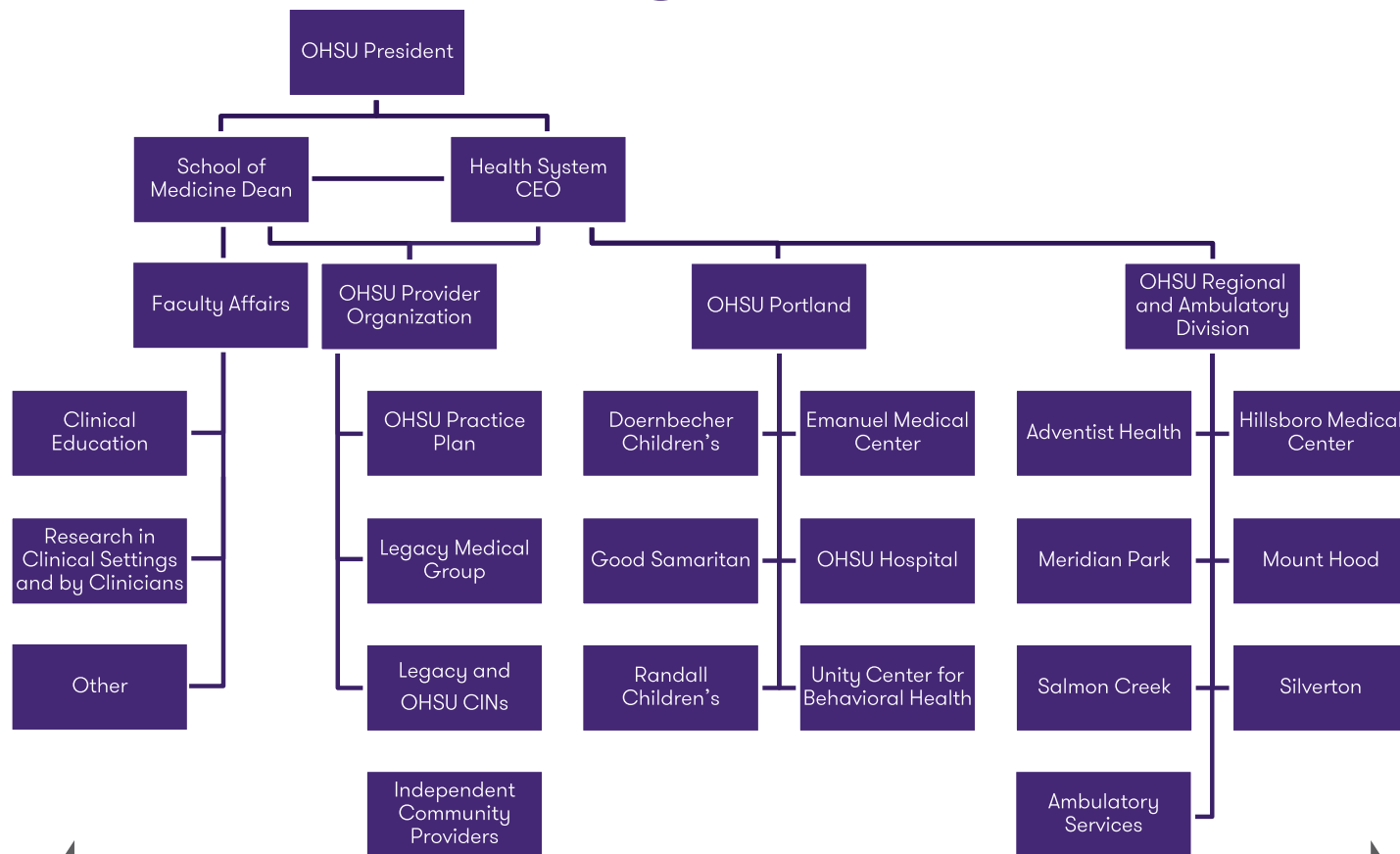
# Hospital Locations



- Portland Division**
1. Doernbecher Children's
  2. Emanuel Medical Center
  3. Good Samaritan
  4. OHSU Hospital
  5. Randall Children's
  6. Unity Center for Behavioral Health

- Regional and Ambulatory Division**
1. Adventist Health
  2. Hillsboro Medical Center
  3. Meridian Park
  4. Mount Hood
  5. Salmon Creek
  6. Silverton
  7. Ambulatory Services (not depicted on the map)

# Proposed Provider Organizational Model



Service Lines – Levels of care at each facility will be determined by the service line leaders, with a focus on patient experience, quality and access.  
 Population Health – Ensures a focus on value across OHSU Health