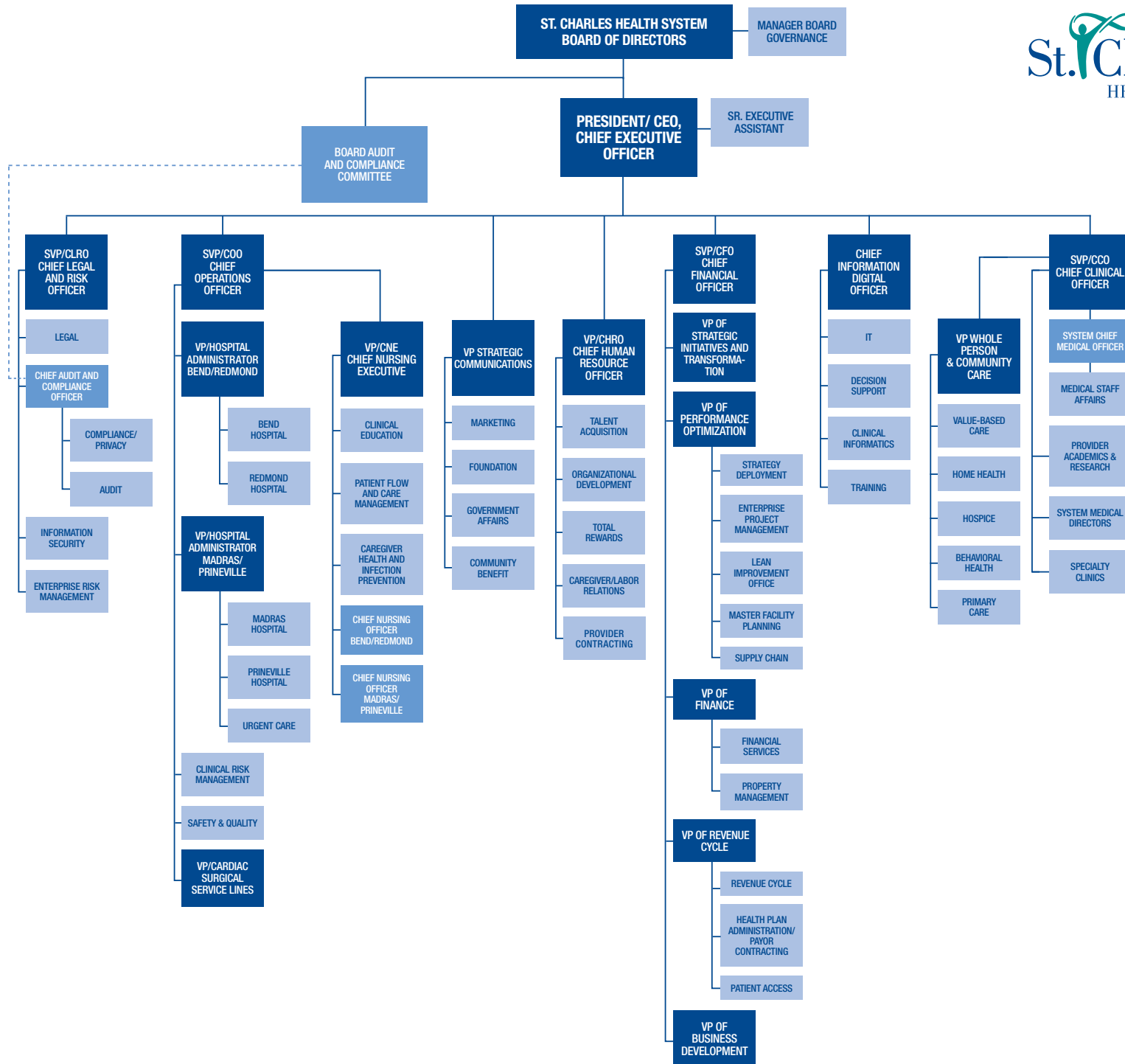


PUBLIC

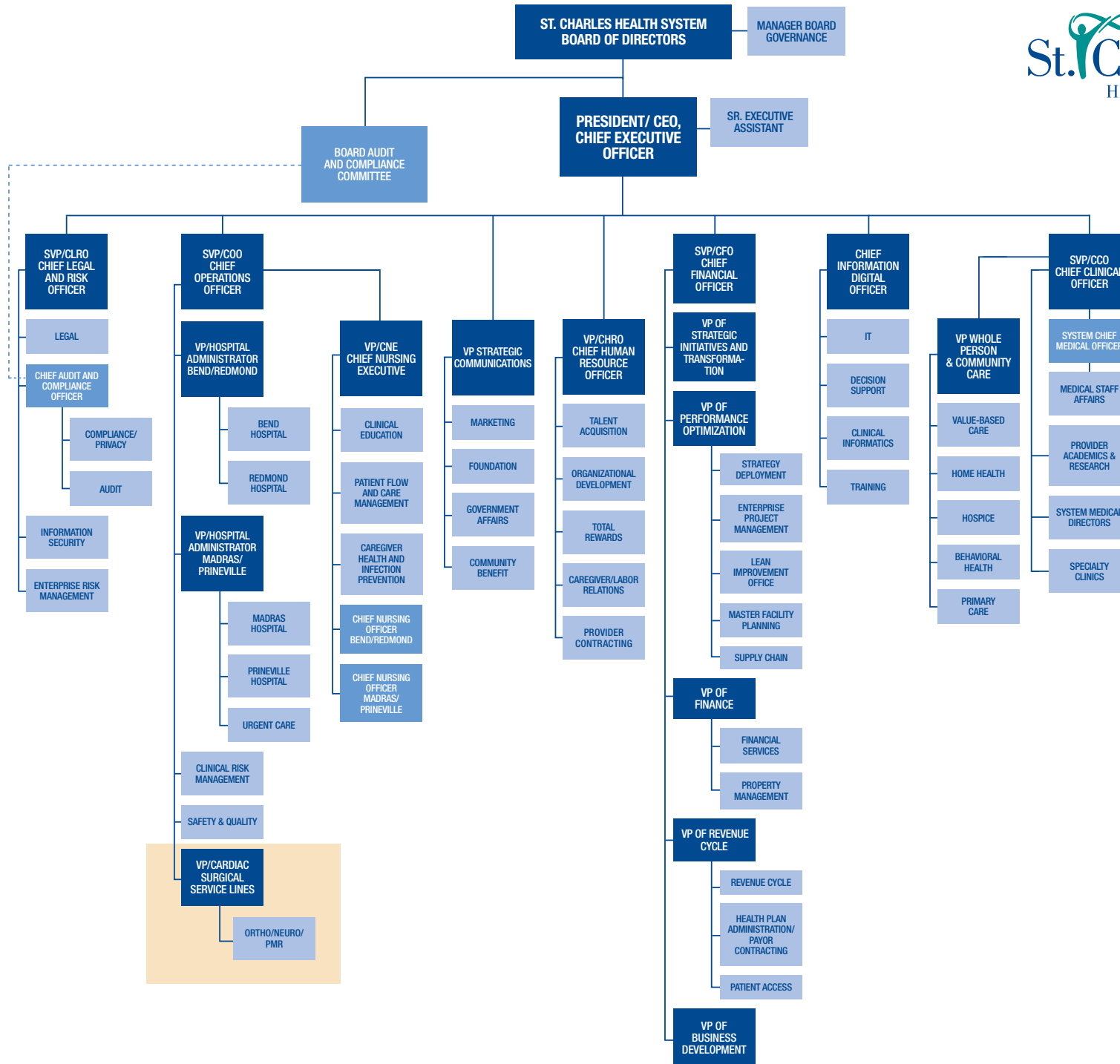
HCMO Notice of Material Change
St. Charles Health System/The Center
September 13, 2024

Attachment No. 4

Pre-Transaction



Post Transaction



Corporate affiliations



St. Charles Health System, Inc. 501(c)(3)
 Obligated Group
 d/b/a St. Charles Bend, St. Charles Redmond, St. Charles Madras,
 St. Charles Prineville, St. Charles Community Pharmacy

<p>St. Charles Foundation, Inc. 501(c)(3)</p> <p>SCHS is sole member</p>	<p>St. Charles Management Services Organization, LLC</p> <p>SCHS is sole member</p>	<p>Cascade Medical Buildings, LLC</p> <p>SCHS is sole member</p>	<p>Central Oregon Surgery Center, LLC *for profit</p> <p>SCHS is sole member</p>	<p>Cascade Medical Imaging, LLC</p> <p>CORA</p>
---	--	---	---	--

<p>Heart Center of the Cascades, LLC</p> <p>Various</p>	<p>Central Oregon Clinically Integrated Network, LLC</p> <p>Praxis Medical Group PC</p>	<p>Cascade Surgicenter, LLC</p> <p>Deschutes Surgicenter, LLC</p>
--	--	--

<p>Central OR Magnetic Resonance Imaging, LLC</p> <p>CORA Various</p>	<p>Health Future, LLC</p> <p>Other nonprofit health care providers</p>	<p>Southern Oregon Linen Service</p> <p>Other nonprofit health care providers</p>	<p>PraxisCare, Inc. ACO REACH</p> <p>Other health care providers</p>
--	---	--	---

CONet, Inc. 501(c)(3)
 Other nonprofit health care providers

- Obligated Group
- Sole member
- Majority Ownership
- 50% Ownership
- Minority Ownership
- No Ownership