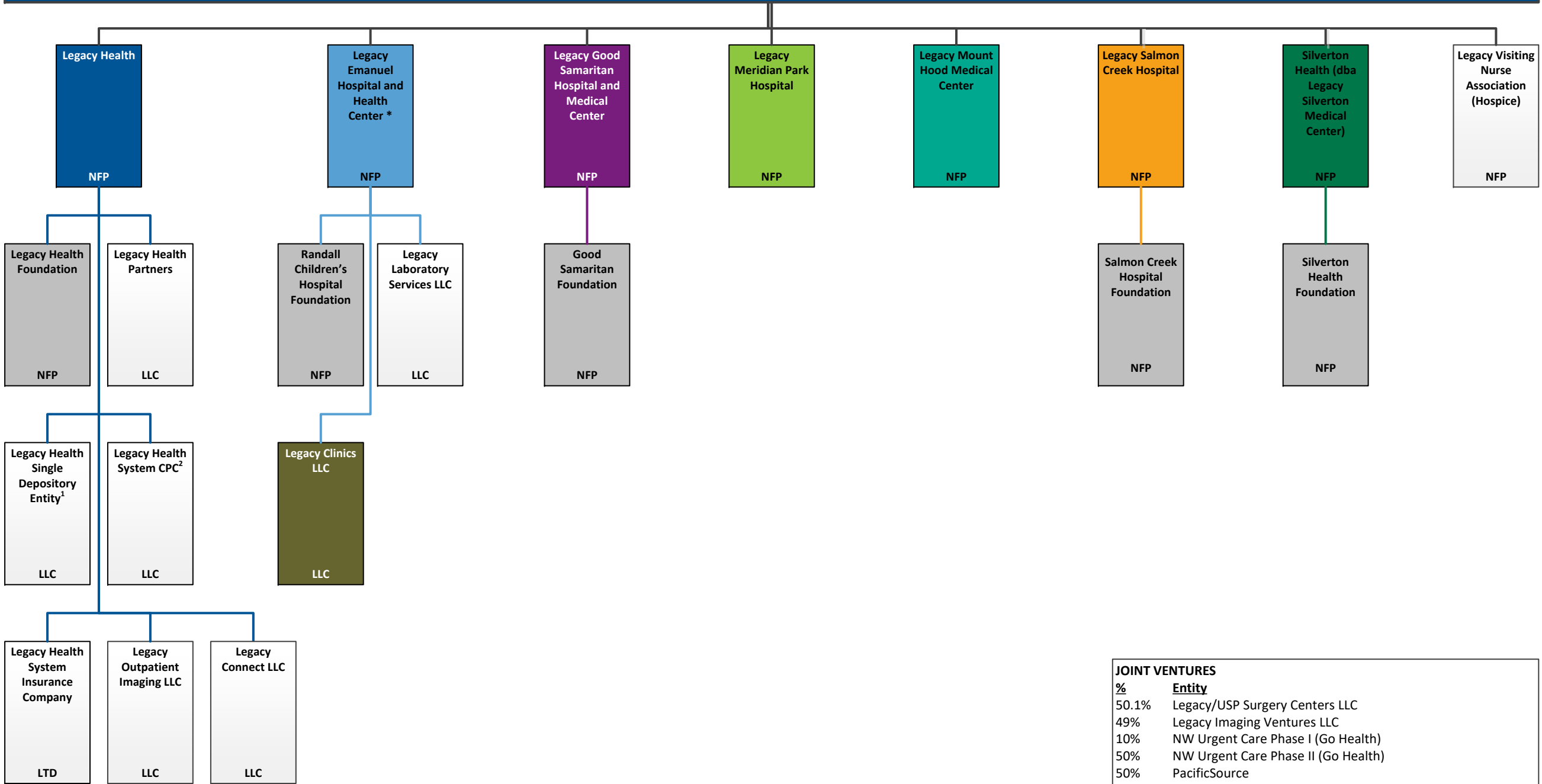


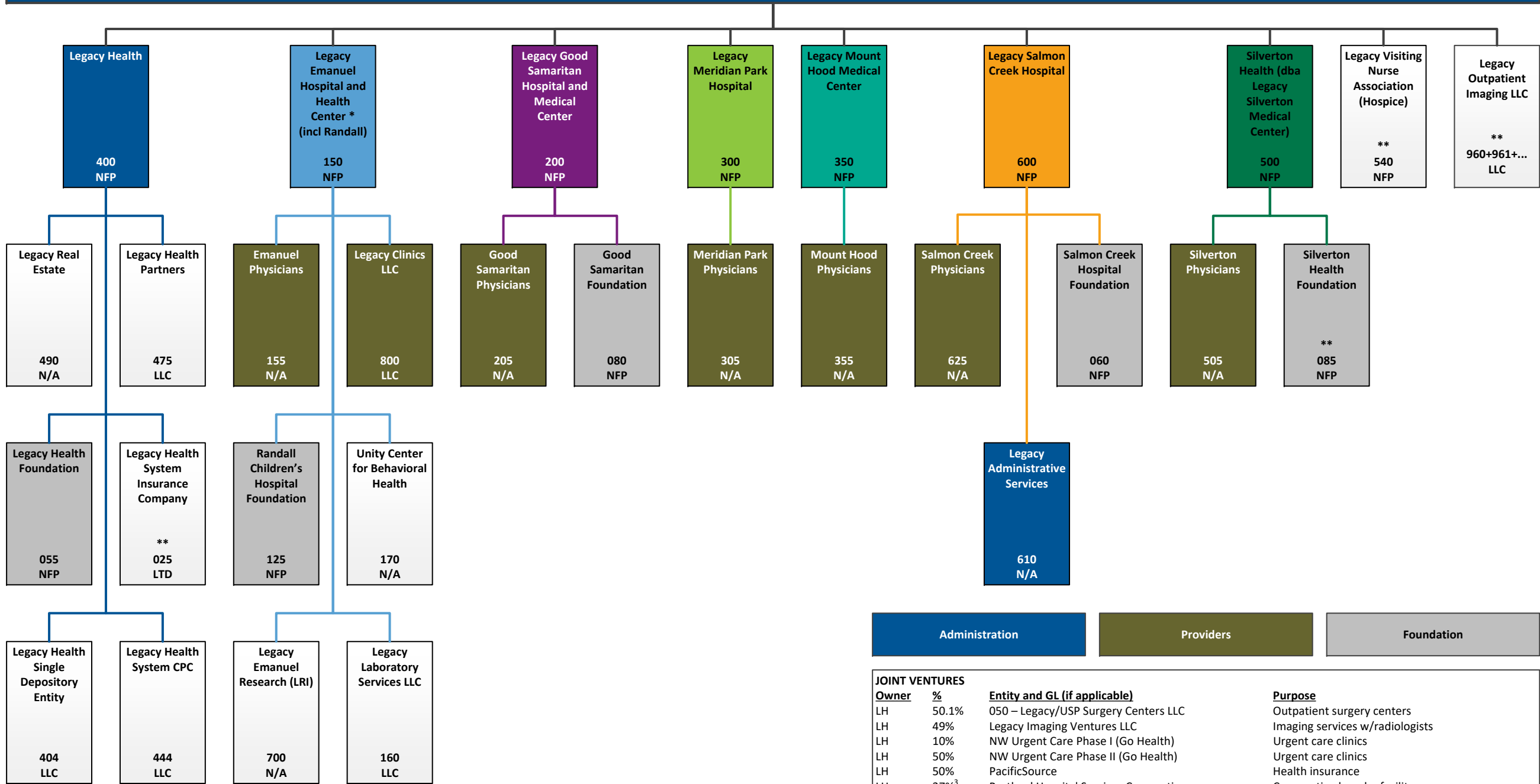
LEGACY HEALTH (Legal Entities)



JOINT VENTURES	
%	Entity
50.1%	Legacy/USP Surgery Centers LLC
49%	Legacy Imaging Ventures LLC
10%	NW Urgent Care Phase I (Go Health)
50%	NW Urgent Care Phase II (Go Health)
50%	PacificSource
39.5%	Portland Hospital Services Corporation
44.3%	Wishing Well Associates Inc.
50%	Option Care at Legacy, LLC
25%	Life Flight Network LLC
50%	NW Hospital Partnership, Inc.

LEGACY HEALTH (Financial / GL Entities)

As of 03-19-24

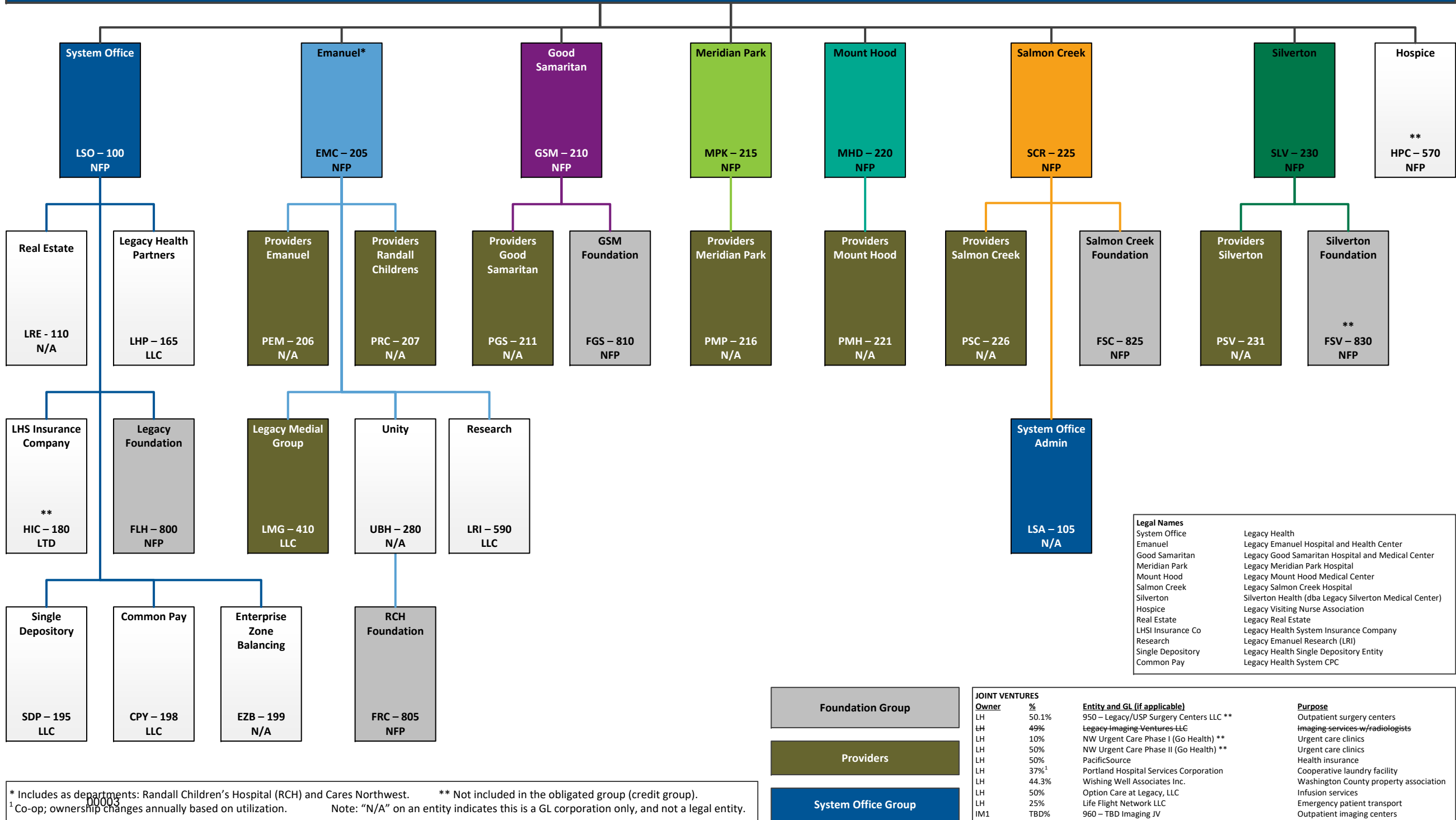


JOINT VENTURES			
Owner	%	Entity and GL (if applicable)	Purpose
LH	50.1%	050 – Legacy/USP Surgery Centers LLC	Outpatient surgery centers
LH	49%	Legacy Imaging Ventures LLC	Imaging services w/radiologists
LH	10%	NW Urgent Care Phase I (Go Health)	Urgent care clinics
LH	50%	NW Urgent Care Phase II (Go Health)	Urgent care clinics
LH	50%	PacificSource	Health insurance
LH	37% ³	Portland Hospital Services Corporation	Cooperative laundry facility
LH	44.3%	Wishing Well Associates Inc.	Washington County property association
LH	50%	Option Care at Legacy, LLC	Infusion services
LH	25%	Life Flight Network LLC	Emergency patient transport
LH	50%	NW Hospital Partnership, Inc.	Stock of ARG (collection agency) (trying to dissolve)

* Includes as departments: Randall Children's Hospital (RCH) and Cares Northwest. ** Not included in the obligated group (credit group).
 1 Co-op; ownership changes annually based on utilization. Note: "N/A" on an entity indicates this is a GL corporation only, and not a legal entity.

LEGACY HEALTH (Financial / GL Entities)

As of 05-XX-24



Legal Names	
System Office	Legacy Health
Emanuel	Legacy Emanuel Hospital and Health Center
Good Samaritan	Legacy Good Samaritan Hospital and Medical Center
Meridian Park	Legacy Meridian Park Hospital
Mount Hood	Legacy Mount Hood Medical Center
Salmon Creek	Legacy Salmon Creek Hospital
Silverton	Silverton Health (dba Legacy Silverton Medical Center)
Hospice	Legacy Visiting Nurse Association
Real Estate	Legacy Real Estate
LHSI Insurance Co	Legacy Health System Insurance Company
Research	Legacy Emanuel Research (LRI)
Single Depository	Legacy Health Single Depository Entity
Common Pay	Legacy Health System CPC

Foundation Group
Providers
System Office Group

JOINT VENTURES		
Owner	%	Entity and GL (if applicable)
LH	50.1%	950 - Legacy/USP Surgery Centers LLC **
LH	49%	Legacy Imaging Ventures LLC
LH	10%	NW Urgent Care Phase I (Go Health) **
LH	50%	NW Urgent Care Phase II (Go Health) **
LH	50%	PacificSource
LH	37% ¹	Portland Hospital Services Corporation
LH	44.3%	Wishing Well Associates Inc.
LH	50%	Option Care at Legacy, LLC
LH	25%	Life Flight Network LLC
IM1	TBD%	960 - TBD Imaging JV

* Includes as departments: Randall Children's Hospital (RCH) and Cares Northwest. ** Not included in the obligated group (credit group).
¹ Co-op; ownership changes annually based on utilization. Note: "N/A" on an entity indicates this is a GL corporation only, and not a legal entity.