



# OREGON DEPARTMENT OF EMERGENCY MANAGEMENT

## Oregon Department of Emergency Management FY2024 BRIC/FMA Drop-In Hour

Jan 30, 2025

**Jon Wiebe**

Non-Disaster Team Lead | Non-Disaster Mitigation Section

[jon.wiebe@oem.oregon.gov](mailto:jon.wiebe@oem.oregon.gov) | (503) 934-0988



# Building Resilient Infrastructure in Communities (BRIC)

## Qualitative Criteria

### BRIC Qualitative Evaluation Criteria (100 points max)



**Risk Reduction/  
Resilience  
Effectiveness**



**Climate Change  
and Other  
Future Conditions**



**Implementation  
Measures**



**Population  
Impacted**



**Community Engagement  
and Other  
Outreach Activities**



**Leveraging  
Partners**



# Program Support Materials

## Qualitative Criteria



### C1 - Risk Reduction/Resilience Effectiveness

- FEMA defines resilience as the ability to prepare for anticipated hazards, adapt to changing conditions, and withstand and recover rapidly from disruption.

**THEME:** The score received for Criterion 1 will depend upon how well the subapplication details the following elements:

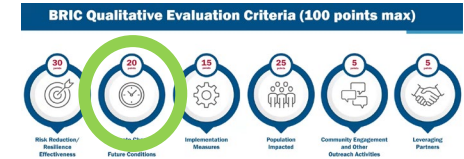
- (1) effective risk reduction,
  - (2) effective increase in community resilience,
  - (3) the provision of ancillary benefits, and
  - (4) the leveraging of innovation.
- Ancillary benefits could include how the project will address inequities and provide the greatest support to those with greatest need.

**Applicants and subapplicants should include Risk Reduction/Resilience Effectiveness information in the Scope of Work Section of FEMA GO.** Additional attachments related to this criterion should be uploaded in the Scope of Work section of FEMA GO and labeled accordingly.



# Program Support Materials

## Qualitative Criteria



### C2 - Climate Change and Other Future Conditions

- Future Conditions by their inherent nature are difficult to predict. However, to not acknowledge potential climate change impacts when designing a project would be a mistake. Planning with climate change and future conditions in mind helps a community invest in choices that protect lives and property for a longer time. Hazard mitigation projects that account for changes in future conditions can minimize damage and losses and save or restore the benefits of natural systems.

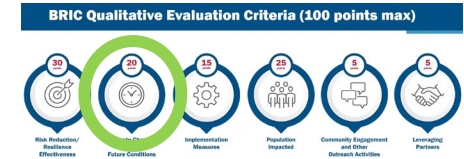
**THEME:** The score received for Criterion 2 will depend upon how well the subapplication details how the project will:

- (1) enhance climate adaption,
- (2) respond to the effects of climate change,
- (3) respond to the effects of other future conditions (population/demographic/land use, etc.), and
- (4) cite data sources, assumptions, and models. The BRIC program may also accept the definitions of climate change of National Aeronautics and Space Agency (NASA) and the U.S. Environmental Protection Agency (EPA).



# Program Support Materials

## Qualitative Criteria



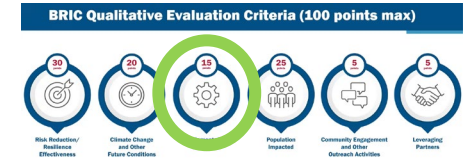
### C2 - Climate Change and Other Future Conditions

- The Sub applicant should indicate which definition of climate change is being used in its project narrative. According to the EPA: Climate change involves significant changes in average conditions-such as temperature, precipitation, wind patterns, and other aspects of climate-that occur over years, decades, centuries, or longer. Climate change involves longer-term trends, such as shifts toward warmer, wetter, or drier conditions.
- These trends can be caused by natural variability in climate over time, as well as human activities that add greenhouse gases to the atmosphere like burning fossil fuels for energy.
- **Applicants and subapplicants should include Future Conditions information in the Evaluation Section of FEMA GO.** Any additional attachments associated with this criterion should also be uploaded in the Evaluation Section of FEMA GO and labeled accordingly. Be sure to include relevant information supporting this criterion, including data sources, studies, models, etc.



# Program Support Materials

## Qualitative Criteria



### C3- Implementation Measures

- Proper implementation requires that a subapplicant understand what is expected of them, ensure the human capital and financial resources needed to complete the project are in place, and develop a realistic timetable. If Implementation Measures are thoroughly developed, the subapplicant has a roadmap to successfully meet overall project objectives.

**THEME:** The score received for Criterion 3 will depend upon how well the subapplication describes:

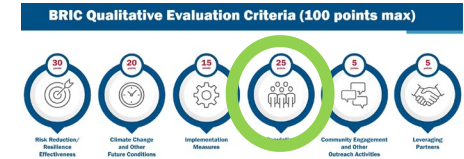
- (1) how the costs will be managed,
  - (2) how the schedule will be managed,
  - (3) how the project will be successfully implemented, and how innovative techniques to facilitate implementation will be incorporated,
  - (4) in its Scope of Work, the technical and managerial staff and resources available to successfully implement this project, and
  - (5) whether and how strong labor standards are incorporated to ensure high-quality work, avert disruptive and costly delays, and promote efficiency.
- **Applicants and subapplicants should include Implementation Measures information in the Scope of Work Section of FEMA GO.** Any additional attachments associated with this criterion should be uploaded in the Scope of Work Section of FEMA GO and labeled accordingly.





# Program Support Materials

## Qualitative Criteria



### C4 - Population Impacted

- While the intensity of a hazard is important, of equal or greater importance is the identification of the population impacted, many of whose demographic or socioeconomic characteristics may place its members at greater risk of harm before, during, and after a disaster.

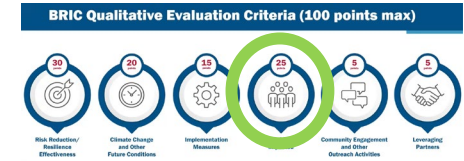
**THEME:** The score received for Criterion 4 will depend upon how well the subapplication describes:

- (1) community-wide benefits,
  - (2) the proportion of the population that will be impacted, including a description of the disadvantaged communities as referenced in EO 14008,
  - (3) how the project was selected and designed to maximize positive impacts and minimize negative impacts to any disadvantaged populations as referenced in EO 14008, and
  - (4) how the proposed project clearly benefits a disadvantaged community.
- A **disadvantaged community** may be characterized by variables including, but not limited to: low income, high and/or persistent poverty, high unemployment and underemployment, racial and ethnic segregation, linguistic isolation, high housing cost burden and substandard housing, distressed neighborhoods, high transportation cost burden and/or low transportation access, disproportionate environmental burden and high cumulative impacts, limited water and sanitation access and affordability, disproportionate climate impacts, high energy cost burden and low energy access, and all geographic areas within Tribal jurisdictions.



# Program Support Materials

## Qualitative Criteria



### C4 - Population Impacted

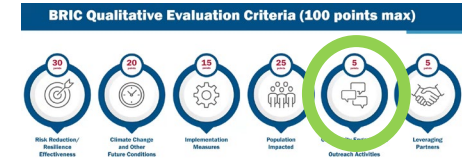
- If a population impacted as demonstrated by the subapplication does not include a disadvantaged community, then the highest point allotment available is **Partially**.
- Subapplication(s) that clearly state the proposed project is benefiting a disadvantaged community can score **Mostly or Higher**.
- Subapplicants are encouraged to document their designation as an Economically Disadvantaged Rural Community (as referenced in 42 U.S.C. § 5133(a) as a small, impoverished community) and if their community has a Centers for Disease Control and Prevention SVI of .6 or higher.
- Subapplications that demonstrate a direct positive impact to a disadvantaged community will receive a score of **Mostly**, and subapplications that thoroughly describe the population impacted and demonstrate a high positive including a high positive impact on a disadvantaged community will merit a score of **Entirely or Exceeds**.
- Applicants and subapplicants should include the Population Impacted information in the Scope of Work Section of FEMA GO. Any additional attachments associated with this criterion should be uploaded in the Scope of Work section of FEMA GO and labeled accordingly.





# Program Support Materials

## Qualitative Criteria



### C5 - Community Engagement and Other Outreach Activities

- A key element in the hazard mitigation process is the discussion it promotes among community members about creating a safer, more disaster resilient community. Community Engagement and Other Outreach Activities that capture a community's values and priorities are likely to result in a project having greater legitimacy and support, leading to greater success in implementation.

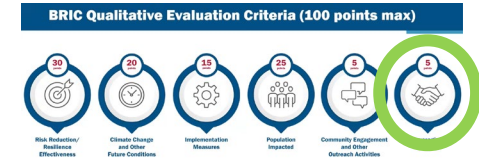
**THEME:** The score received for Criterion 5 will depend upon how well the subapplication describes:

- (1) the outreach strategy and supporting activities appropriate to the project and community that advance hazard mitigation,
  - (2) the types of community planning processes leveraged,
  - (3) how input from a diverse range of stakeholders, including people from disadvantaged communities, was gathered and incorporated into project conception and design, and
  - (4) how community planning and stakeholder input will continue to be used to help direct project execution.
- **Applicants and subapplicants should include information about Community Engagement and Other Outreach Activities in the Scope of Work Section of FEMA GO.** Additional attachments related to this criterion should be uploaded in the Scope of Work section of FEMA GO and labeled accordingly.



# Program Support Materials

## Qualitative Criteria



### C6 - Leveraging Partners

- Leveraging Partners allows subapplicants to access complementary strengths from neighboring communities, states, the federal government, and non-profit and private partners. This potentially helps the subapplicant from a cost basis and serves the local community's greater good.

**THEME:** The score received for Criterion 6 will depend upon how well the subapplication incorporates:

- (1) partnerships (e.g., state, territory, Tribal, private, district, local community) that will ensure the project meets community needs,
  - (2) an explanation of how these partnerships benefit disadvantaged communities, and
  - (3) an explanation on the anticipated outcome of those partnerships (e.g., leveraging resources such as financial, material, and educational resources, coordinating multi-jurisdictional projects, heightened focus on equity related issues).
- **Applicants and subapplicants should include information about Leveraging Partners in the Evaluation Section of FEMA GO.** Additional attachments related to this criterion should be uploaded in the Evaluation Section of FEMA GO and labeled accordingly.



# Program Support Materials

## Best Practices

### Subapplication Development

- Use clear and concise naming conventions (no need to include BRIC/FMA in title)
- Place references in narrative linked to provided supporting documents
- If supporting documents are numerous, include table of contents
- **Align the project or activity with the program objectives and NOFO priorities**
- **Address qualitative criteria throughout the subapplication narratives, these are not single response, they must weave through the narrative sections**
- **Clearly define and quantify existing levels of risk and intended levels of protection**
- **Clearly connect climate change effects and natural hazards to project**



# Program Support Materials

## Best Practices continued

- Budget includes documentation to support all costs
- Include budget narrative for complex projects & activities
- Project period of performance should extend full 36 months.
- **Seek maximum points in each category**
- Do not include links to URLs or internet, as evaluators are unable to access beyond what is provided in the current subapplication
- **Do not assume evaluators will read an attachment *without* a reference in narrative**
- **Consider the first paragraph as an executive summary**
- **Tell the story, use analogies to reflect important points**
- **Place the bottom line up front - don't bury details, data and/or information**
- Demonstrate consideration of project alternatives



# Program Support Materials

## Best Practices continued

- Check that proposed activities and costs are eligible according to the NOFO and the [Hazard Mitigation Assistance \(HMA\) guidelines](#)
- Incorporate BABAA requirements at the beginning of procurement processes and pass documentation requirements to vendors
- Match your implementation schedule to your cost estimate
- Identify pre-award costs for eligible activities
- Budget cost categories are broken out (e.g. – labor & fringe, vs. lump sum)
- Management costs are a separate category calculated outside the project budget
- Indirect costs are captured within management cost category
- Contingencies are separate sub cost lines and within allowable limits according to HMA Guidance (up to 7%)



# Closing

## Question & Answer





# Webinar and Office Hours:

OEM Non-Disaster Mitigation Team:

Jon Wiebe – Team Lead

[jon.wiebe@oem.oregon.gov](mailto:jon.wiebe@oem.oregon.gov)

Rachel Foley – Mitigation Representative

[rachel.foley@oem.oregon.gov](mailto:rachel.foley@oem.oregon.gov)

Bridget Good – Mitigation Representative

[bridget.good@oem.oregon.gov](mailto:bridget.good@oem.oregon.gov)

Today's Webinar will be posted on the OEM website:

<https://www.oregon.gov/oem/emresources/Grants/Pages/HMA.aspx>

Upcoming webinar dates will be posted on the OEM website and sent out via OEM listserv

**Drop-In Hour beginning January 24, 2025  
(Thursdays @ 2pm and Fridays @ 11am)**

- **[Join the Friday Drop-In hour](#)**
- Meeting ID: 281 435 944 649    Passcode: 6fc36qx2
- **Dial in by phone**
- [+1 503-446-4951,,783119996#](tel:+15034464951783119996) United States,
- Phone conference ID: 783 119 996#
  
- **[Join the Thursday Drop-In hour](#)**
- Meeting ID: 239 326 788 997    Passcode: KR6L8kh3
- **Dial in by phone**
- [+1 503-446-4951,,878010478#](tel:+15034464951878010478) United States,  
Phone conference ID: 878 010 478#