

Oregon's Response to Wildfire Risk

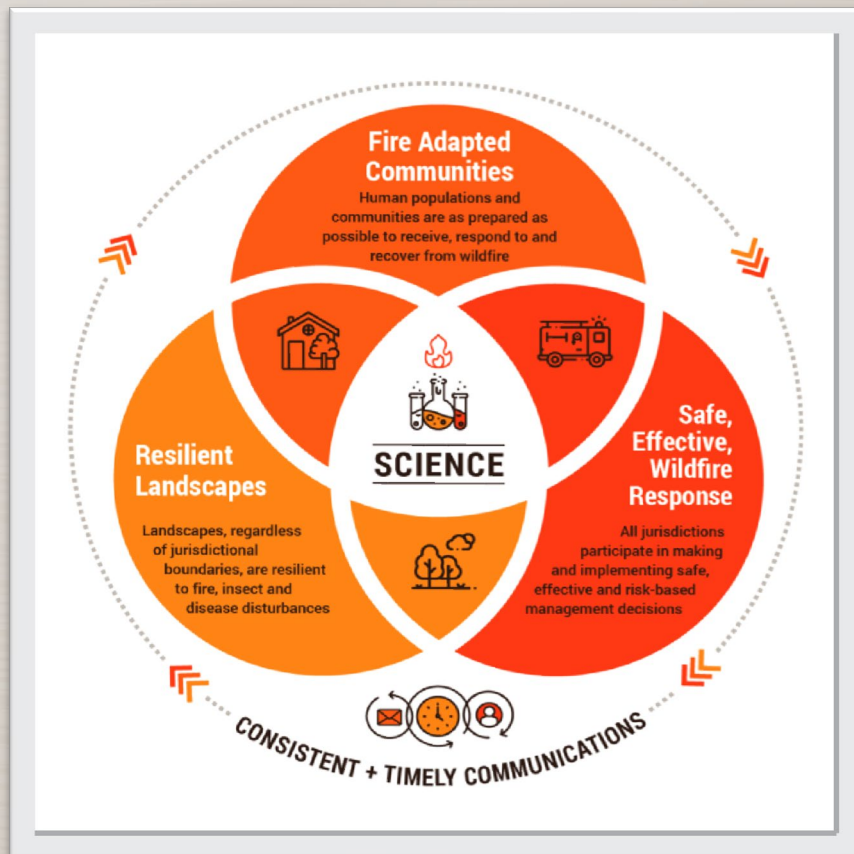
A Journey Towards Landscape Resilience

THURSDAY, July 17, 2024



Oregon's Response to Wildfire Risk

“A Journey Towards Landscape Resilience”



A Cohesive Approach Towards Landscape Resiliency



Shared Stewardship Partnerships



Governor's Office



Oregon Department of Forestry



USDA Forest Service



Oregon Department of Fish and Wildlife



Bureau of Indian Affairs



Oregon Watershed Enhancement Board



Bureau of Land Management

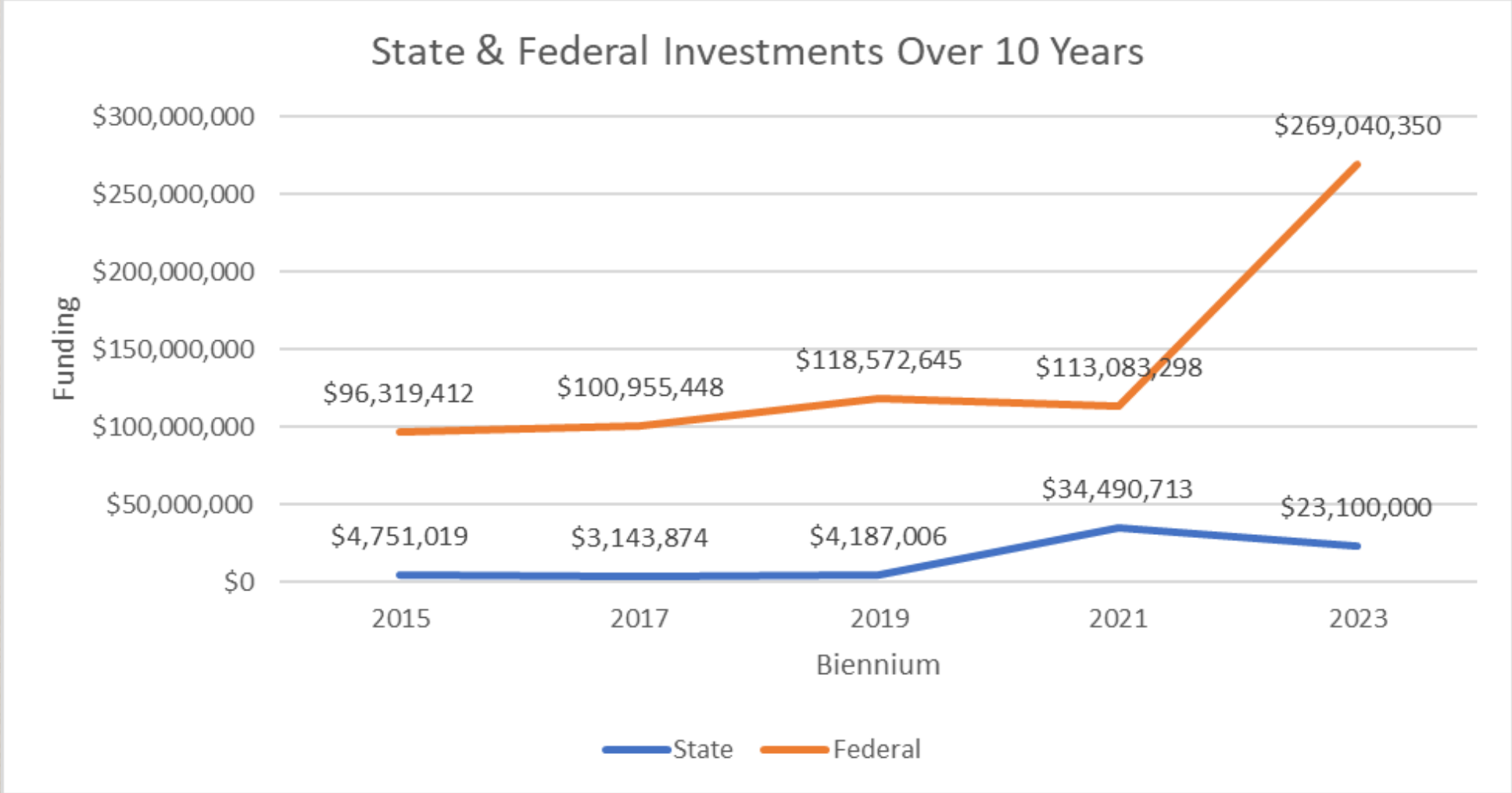


Natural Resource Conservation Service

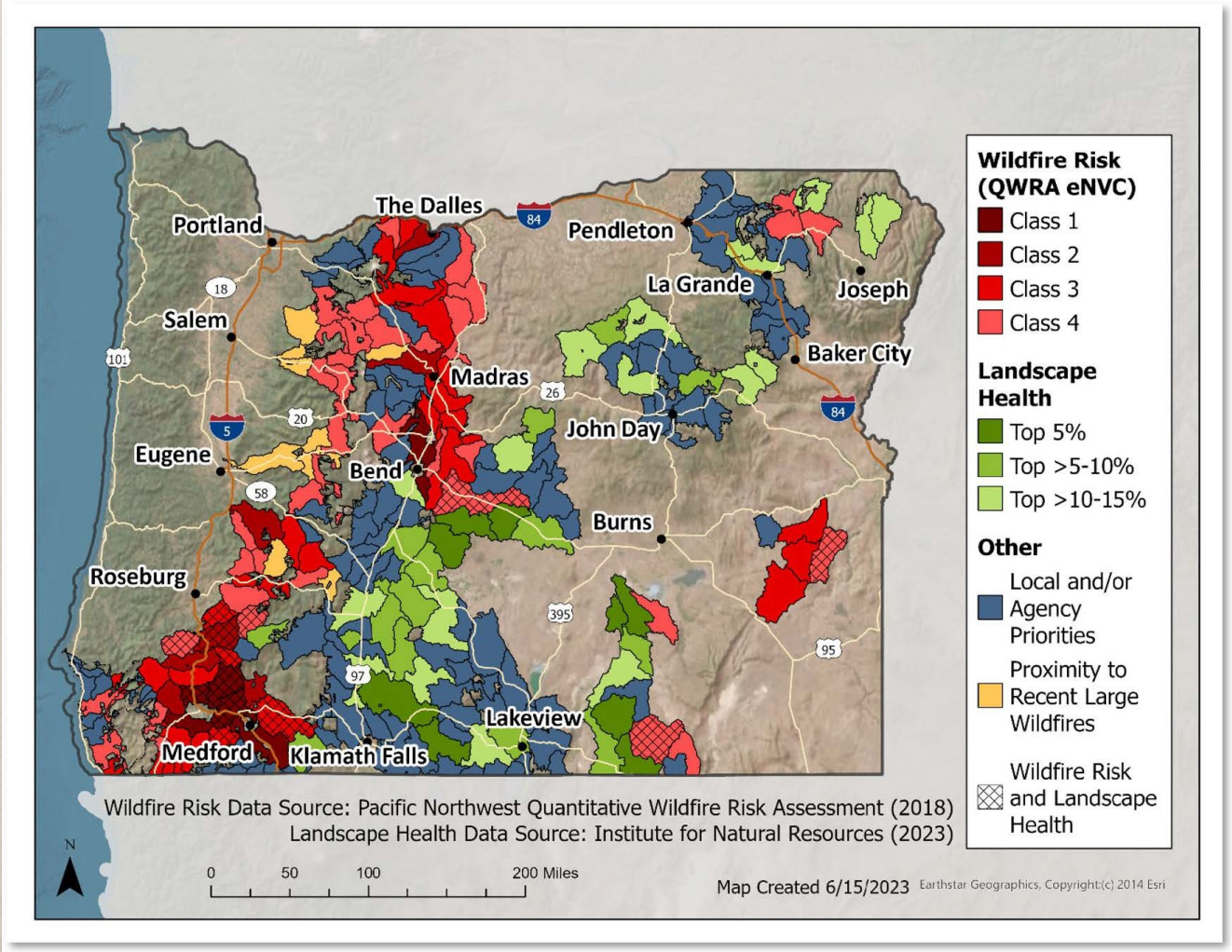
Resilient Landscapes Actions



Resilient Landscapes Investments



Aligning Actions and Funding in High Priority Areas



Priority Next Steps

- Interagency Dashboard
- Regional Partnerships, Assessments, and Planning
- 2nd Landscape Resiliency Summit
- Securing Increased and Sustainable Funding

Thank You

Extra Slides

Kickoff to Implementation

Documents

ODF Progress Report
20-Year Strategy Booklet

Inaugural Summit

Nov 1, 2023 Hood River

2024 Workplan

Key Projects and Priorities for 2024



Oregon's Shared Stewardship Governance Structure



VISION

Healthy and resilient landscapes supporting Oregon's social, economic, and ecological needs for future generations.

Strategic Elements

- Reduce wildfire risk to communities
- Adapt ecological systems to persist in a changing climate
- Create functional aquatic and terrestrial ecosystems
- Support vibrant local economies
- Protect healthy watersheds and water resources
- Provide quality outdoor opportunities for all Oregonians
- Promote equity through the stewardship of landscapes

Shared Principles

Principle 1: Fund and support the development of locally led and collaboratively developed landscape assessments and plans that identify priority geographies and actions for landscape resiliency and wildfire risk reduction.

Principle 2: Commit to long-term participation and membership in the shared stewardship governance structure.





Shared Principles

Principle 3: Commit to supporting a science, information, and assessment network by providing information, expertise, and resources.

Principle 4: Commit to identifying and supporting capacity across Oregon by collectively working together to monitor and adapt to make this strategy successful.

Goals

GOAL 1

Landscape Condition

Shift the incidence, frequency, and severity of wildfires toward a desired condition by maintaining and restoring landscapes in Oregon that are resilient to extreme fire, drought, insects, and diseases.



GOAL 2

Governance & Engagement

Maintain a high functioning collaborative governance structure that allows for shared decision making; ensures fairness in distribution of benefits, costs, and risks; supports efficiencies and alignment across boundaries; engages Tribes, community and interest groups, scientists, and local partnerships and collaboratives; and is adaptable to changing conditions.



GOAL 3

Communication & Awareness

Increase public awareness of the inevitability of wildfire, the importance of understanding how to live safely with wildfire, and current progress towards landscape resilience and wildfire risk reduction.



Goals

GOAL 4

Capacity & Readiness

Make collaborative planning and implementation capacity of agencies, Tribes, local partnerships, and workforce commensurate with the scale of wildfire risk reduction and landscape resiliency treatments needed across Oregon.



GOAL 5

Funding

Establish a diverse and stable funding portfolio of federal, state, and private sources commensurate with needs to achieve intended quality, pace and scale of resilience treatments and support the capacity and readiness of partner entities.



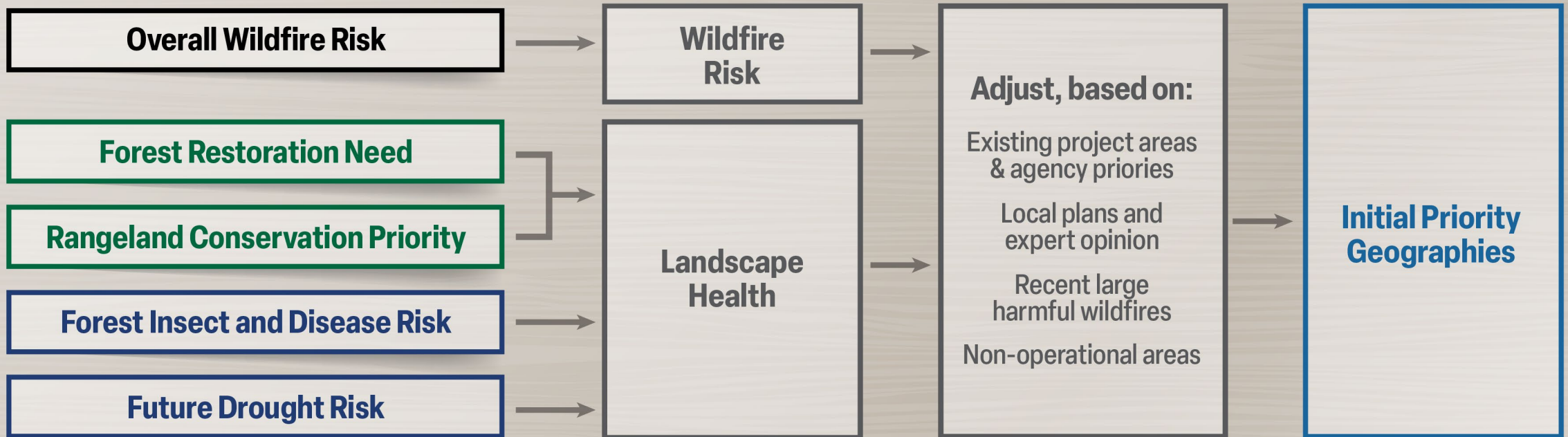
GOAL 6

Tracking, Reporting & Updating

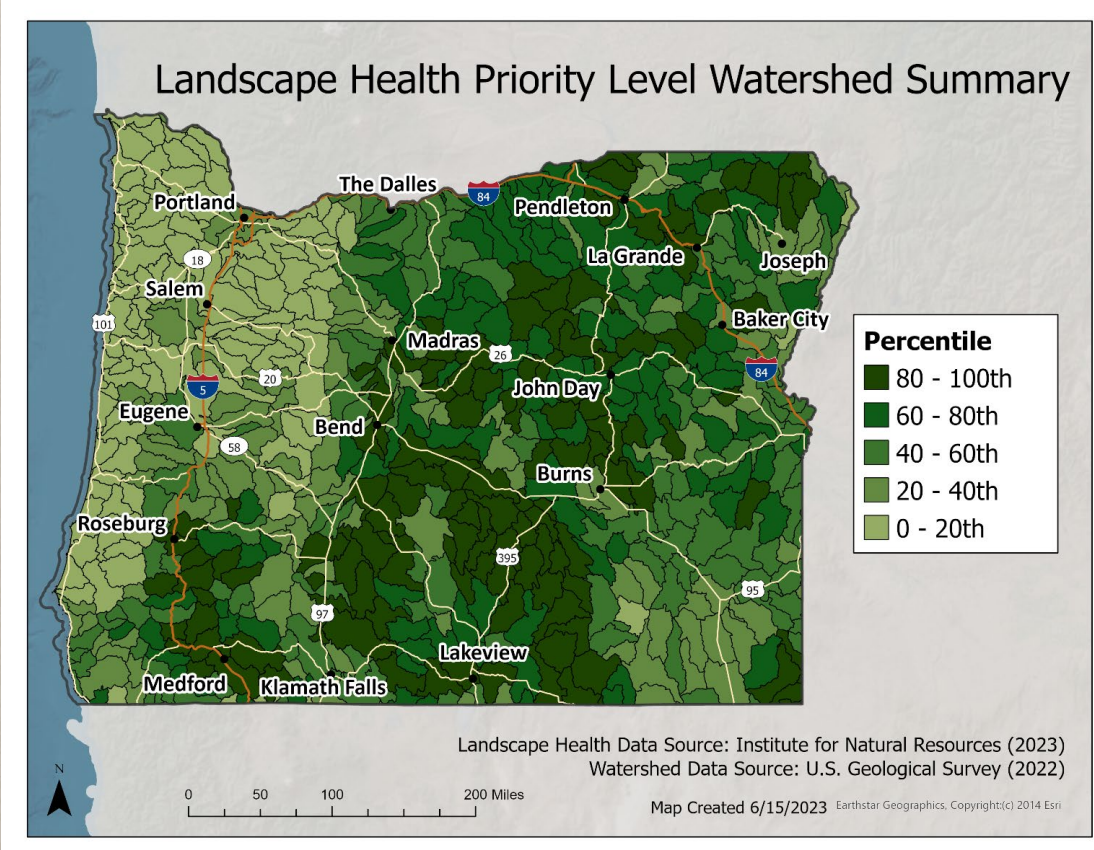
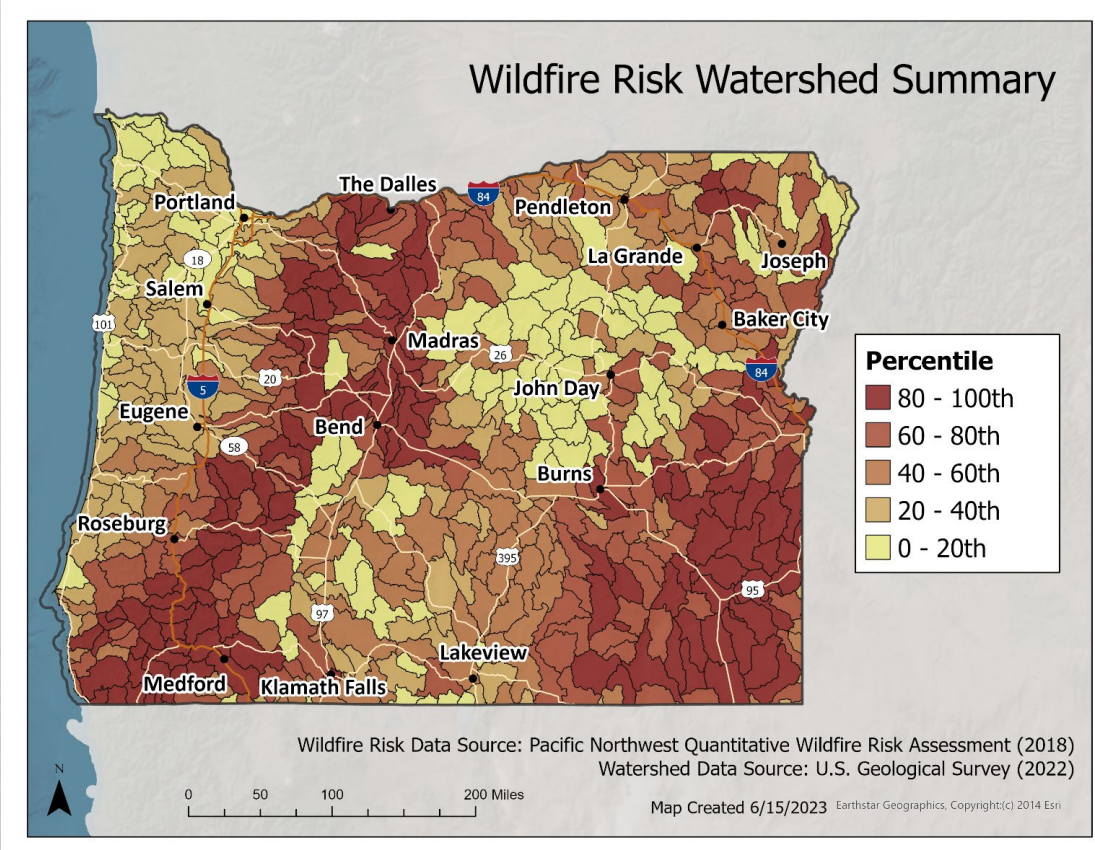
Track progress and provide real time reporting that displays relevant information based on progress towards landscape resiliency goals and metrics, including investments, actions, and outcomes that can be displayed publicly. Update the strategy as new information becomes available and is deemed necessary.



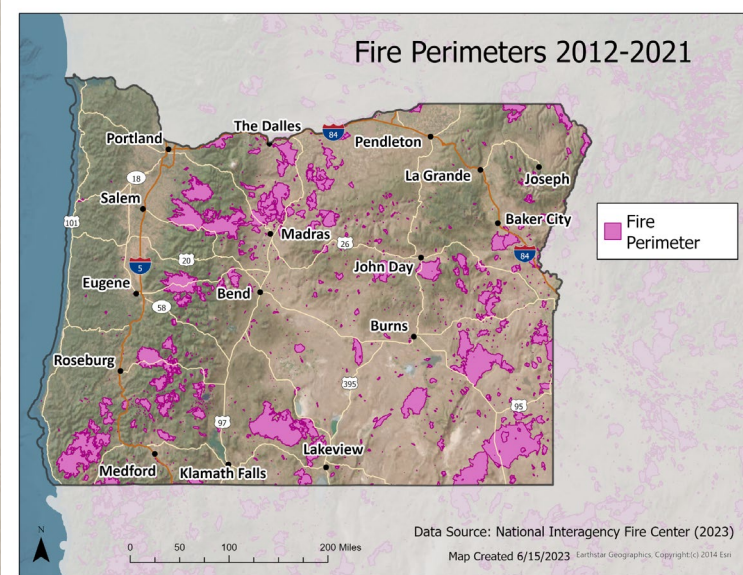
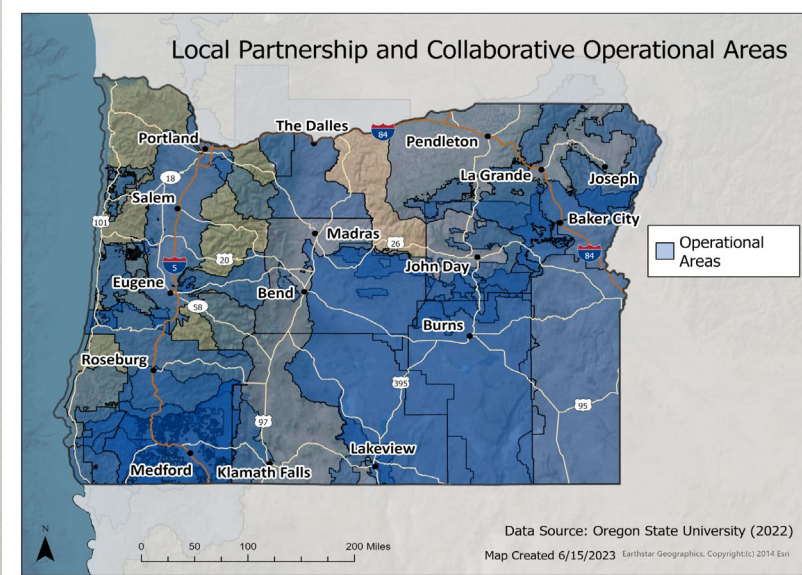
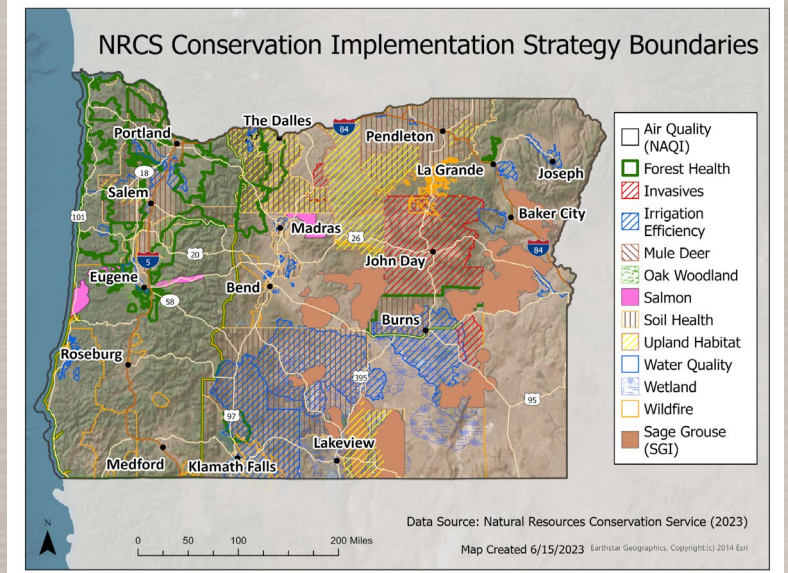
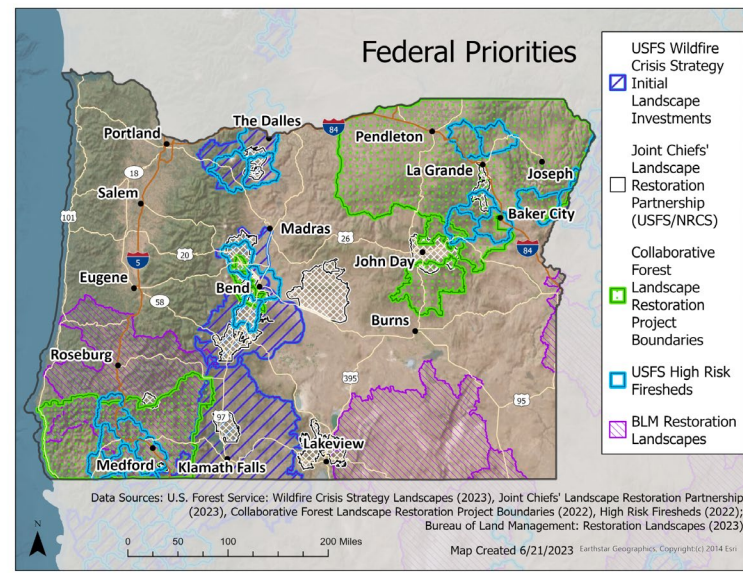
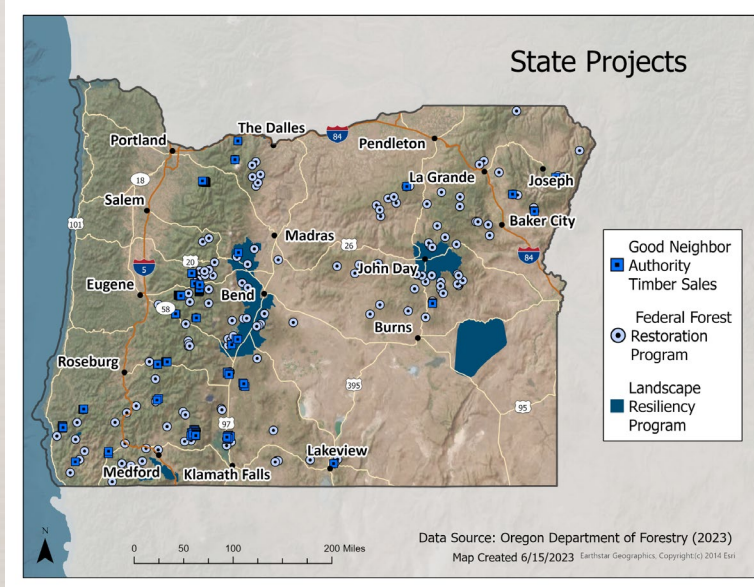
Geographic Prioritization Process & Methodology



Wildfire Risk & Landscape Health Watershed Summaries



Refining the Results



Estimated Acres and Costs

| Ecosystem | Acres | Avg Treatment Cost per Acre | Estimated Treatment Cost |
|--------------|---------------------|-----------------------------|--------------------------|
| Forest | 5.2 Million | \$1,000.00 | \$5.2 Billion |
| Rangeland | 7.9 Million | \$311 | \$2.5 Billion |
| Total | 13.1 Million | | \$7.7 Billion |

Regional Partnerships, Assessments, and Planning

Desired Outcome

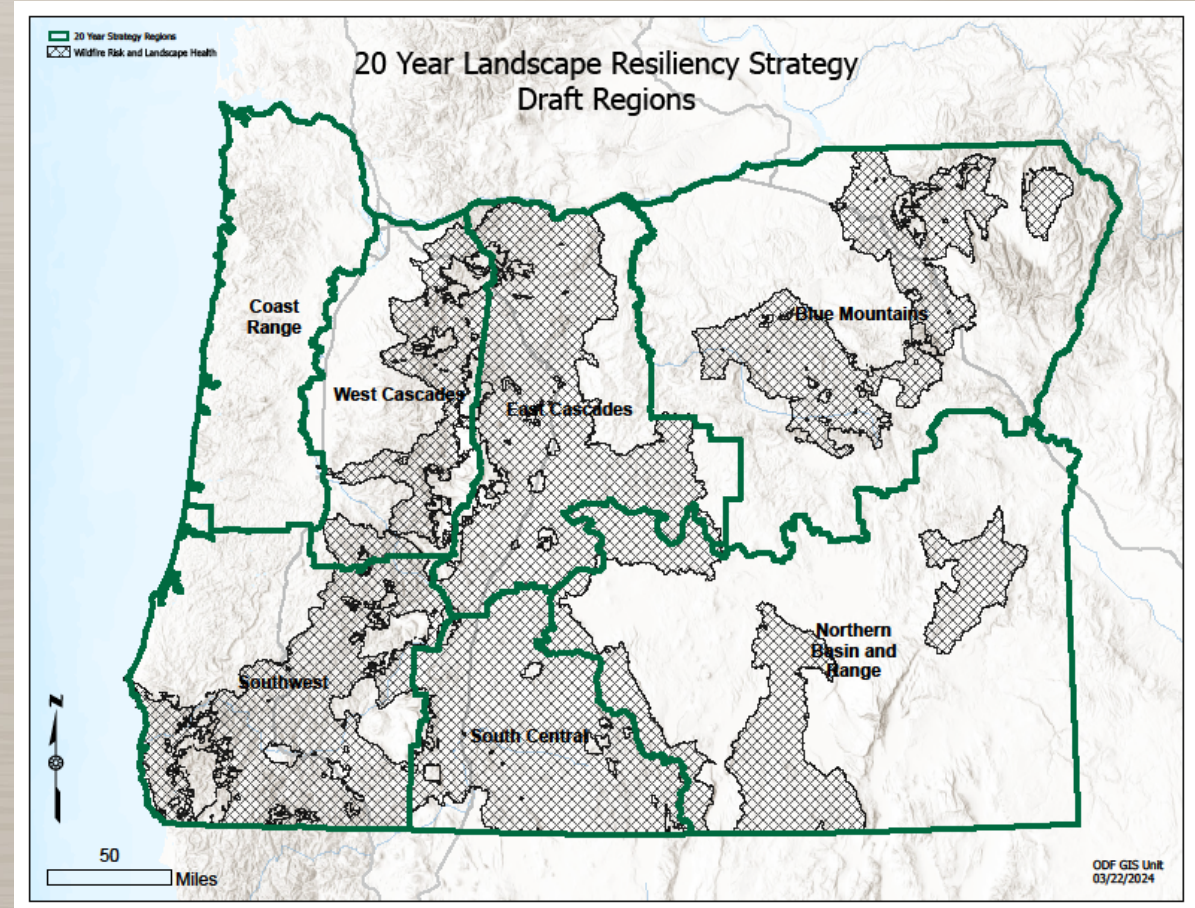
- Framework that Strengthens Partnerships
- Supports Regional Prioritization and Planning
- Directs Resources towards Greatest Need & Opportunity
- Alignment with 20-Year Strategy

Regions

- 7 Regions
- Based on Eco-types
- Adjusted for Agency Administrative Boundaries

Scale:

- Average: 8 Million Acres (4 million – 16 million)



Regional Landscapes

Desired Outcome:

- Regional Shared Stewardship Ethos
- Alignment with 20-Year Landscape Resiliency Strategy
- Direct resources towards priority projects and actions.

Agency Leadership:

- ODF District Forester
- USFS Forest Supervisor
- BLM District Manager
- NRCS Basin Team Leader

Tribal Nations:

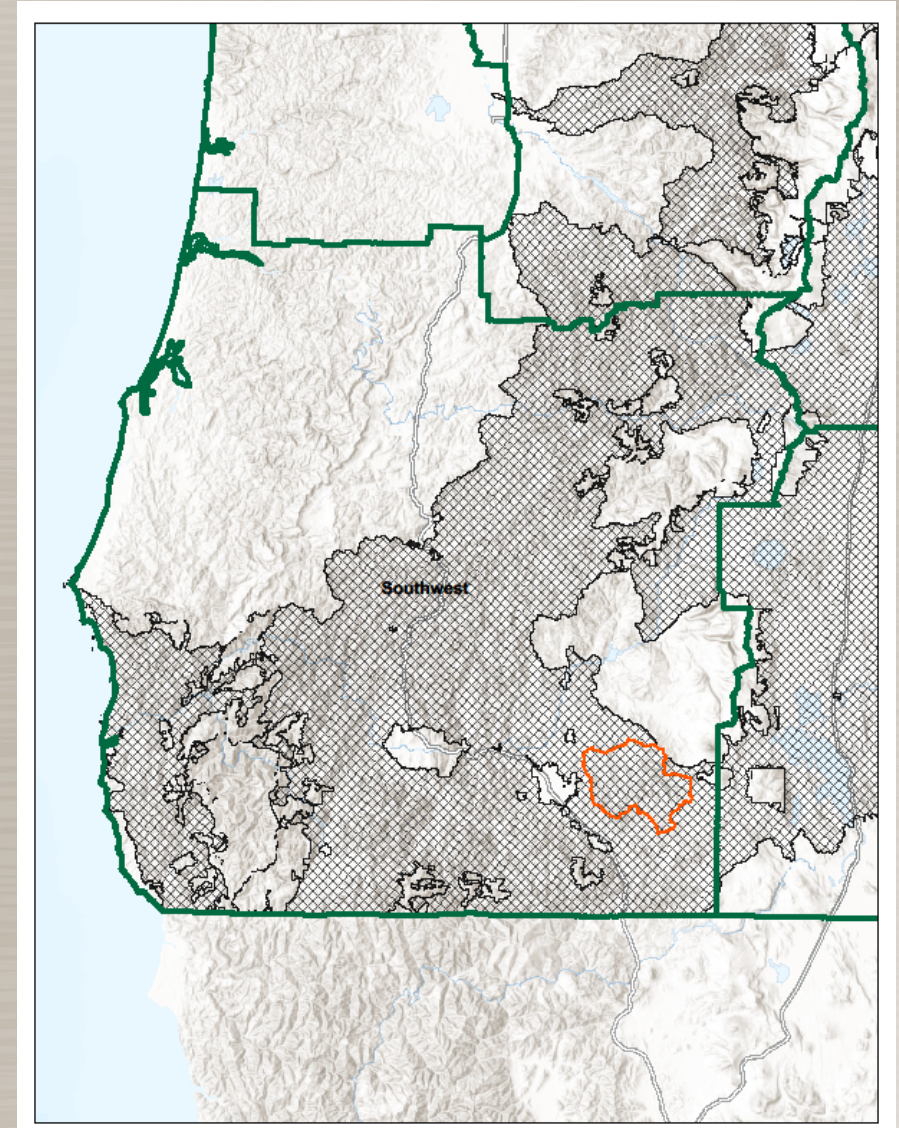
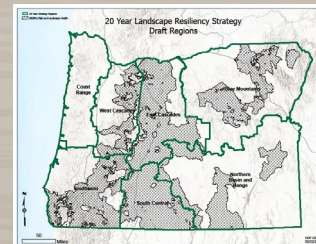
- Tribal Lands

Partners:

- Tribal Communities
- Collaboratives and Partnerships
- Others

Process:

1. Shared Stewardship Agreements / MOU's
2. Regional Assessments
3. Identify Priority Projects
4. Set Metrics, Identify Barriers and Needs
5. Develop Funding/Financial Plan
6. Direct Resources, Overcome Barriers



Landscape Project Area

Desired Outcome:

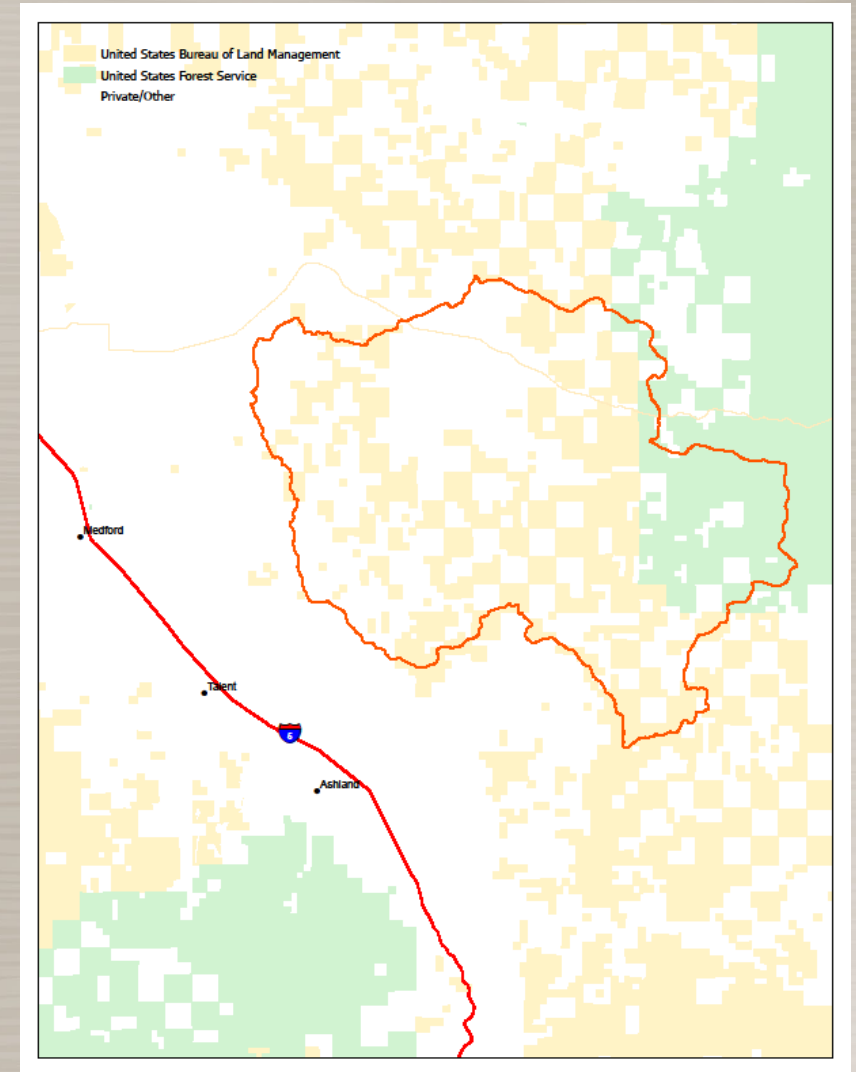
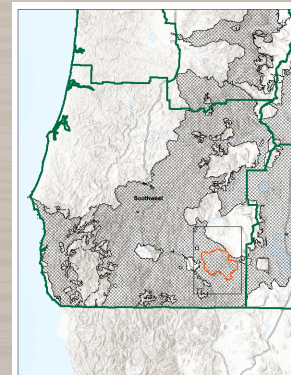
- Shared Priority Project Areas
- Areas of the Greatest Need
- Cross Boundary, Landscape Scale

Scale:

- 150,000 – 250,000 acres

Project Planning

- 5-Year Workplans, 20-Year Outlook
- Identified Metrics for Success
- Identified Priority Actions
- Implement using all available tools



For Illustrative Purposes Only