

OPERATIONS AND MAINTENANCE MANUAL

DFI No.: D01071

Facility Type: Water Quality Filter Strip



April, 2020

INDEX

1. Identification
2. Facility Contact Information
3. Construction
4. Facility Overview
5. Facility Haz Mat Spill Feature(s)
6. Auxiliary Outlet(High Flow Bypass)
7. Maintenance Requirements
8. Waste Material Handling

APPENDIX A:	Operations Plan and Profile Drawing(s)
APPENDIX B:	ODOT Project Plan Sheets
APPENDIX C:	Photos

1. Identification

Drainage Facility ID (DFI): **D01071**
Facility Types: Water Quality Filter Strip
Construction: 52V-013
Drawings:

Location: District: 5
Florence-Eugene Highway 62
Milepost: 32.09/32.17 (beg./end)

2. Facility Contact Information

Contact the Engineer of Record, Region Technical Center, or Geo-Environmental's Senior Hydraulics Engineer for:

- Operational clarification
- Maintenance clarification
- Repair or restoration assistance

Engineering Contacts:

Region Technical Center Hydraulics Engineer (503) 986-2691

Or

Geo-Environmental Senior Hydraulic Engineer (503) 986-3365

3. Construction

Engineer of Record: ODOT Designer - Region 2 Tech. Center,
Chris Carman, (503) 986-2691

Facility construction: 2019
Contractor: TBD
Contract #: 15126

4. Overview

The filter strip is located at milepost 32.09 on the Florence-Eugene highway 62 on the south side of the highway. Treatment of pollutants from the highway are achieved through sedimentation and infiltration through the water quality mix shown in section B-B in the operational plan.

5. Facility Hazmat Spill Feature(s)

The filter strip has no hazmat spill features.

6. Auxiliary Outlet (High Flow Bypass)

This facility does not contain an auxiliary outlet feature. The facility was designed to receive runoff from the road and discharge into cross pipes.

7. Maintenance Requirements

Routine maintenance table for non-proprietary stormwater treatment and storage/detention facilities have been incorporated into ODOT's Maintenance Guide. These tables summarize the maintenance requirements for ponds, swales, filter strips, bioslopes, and detention tanks and vaults. Special maintenance requirements in addition to the routine requirements are noted below when applicable.

The ODOT Maintenance Guide can be viewed at the following website:

https://www.oregon.gov/ODOT/HWY/OOM/mg/02/act125_waterqualityfacilitiesandtables.pdf

The following stormwater facility maintenance table (See ODOT Maintenance Guide) should be used to maintain the facility outlined in this Operation and Maintenance Manual or follow the Maintenance requirements outlined in Appendix C when proprietary structure is selected below:

- Table 1 (general maintenance)
- Table 2 (stormwater ponds)
- Table 3 (water quality biofiltration swales)
- Table 4 (water quality filter strips)
- Table 5 (water quality bioslopes)
- Table 6 (detention tank)
- Table 7 (detention vault)
- Appendix C (proprietary structure)
- Special Maintenance requirements:

8. Waste Material Handling

Material removed from the facility is defined as waste by DEQ. Refer to the roadwaste section 5.18 of the ODOT Maintenance Yard Environmental Management System (EMS) Policy and Procedures Manual for disposal options:

https://www.oregon.gov/ODOT/HWY/OOM/EMSdoc/ems_manual.pdf

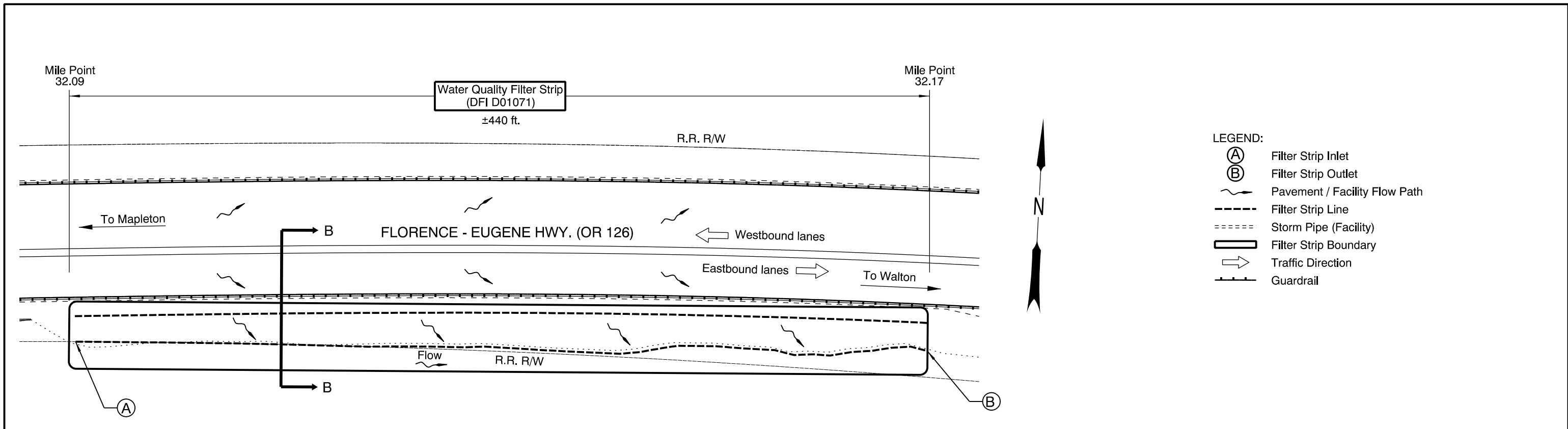
Contact any of the following for more detailed information about management of waste materials found on site:

ODOT Clean Water Unit	(503) 986-3008
ODOT Statewide Hazmat Coordinator	(503) 229-5129
ODOT Region Hazmat Coordinator	(503) 986-2647
ODEQ Northwest Region Office	(503) 229-5263

Appendix A

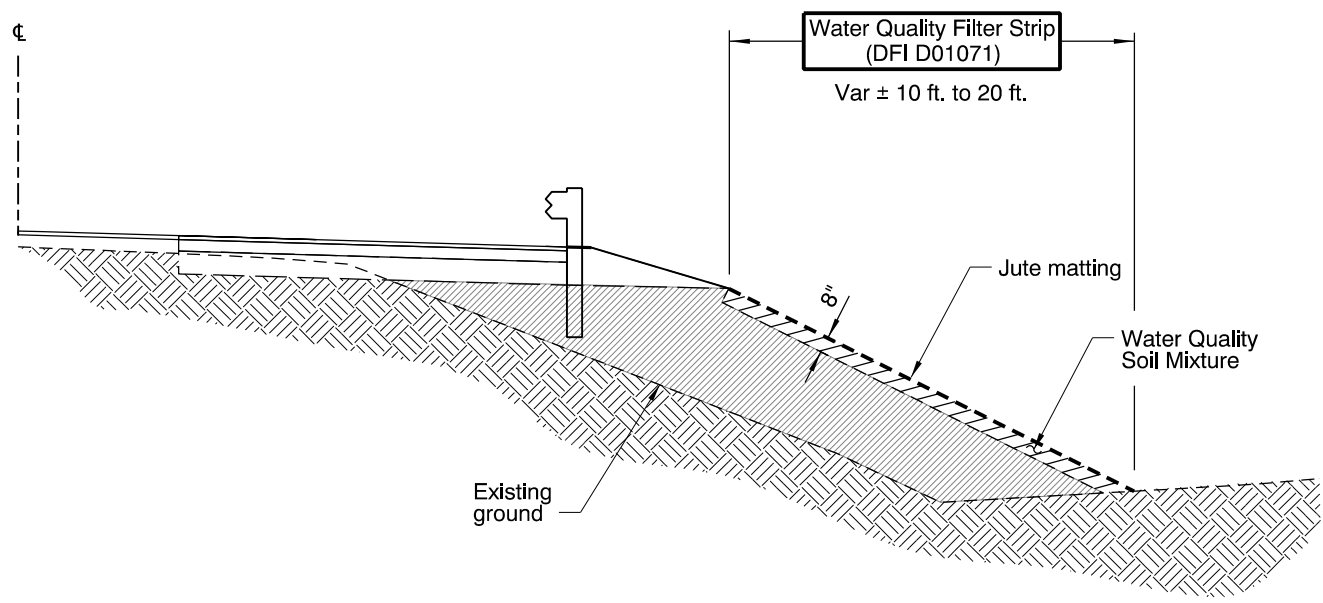
Content:

- **Operational Plan and Profile Drawing(s)**



- LEGEND:
- (A) Filter Strip Inlet
 - (B) Filter Strip Outlet
 - ~ Pavement / Facility Flow Path
 - - - Filter Strip Line
 - ==== Storm Pipe (Facility)
 - ▭ Filter Strip Boundary
 - Traffic Direction
 - ▬ Guardrail

PLAN
NTS



Section B-B
NTS

OREGON DEPARTMENT OF TRANSPORTATION

Prepared By: Chris Carman

Drafted By: Jeff Coon

DFI D01071
MAINTENANCE DISTRICT 5 HWY 62
FACILITY TYPE
HIGHWAY MP 32.09
LANE COUNTY

Appendix B

Content:

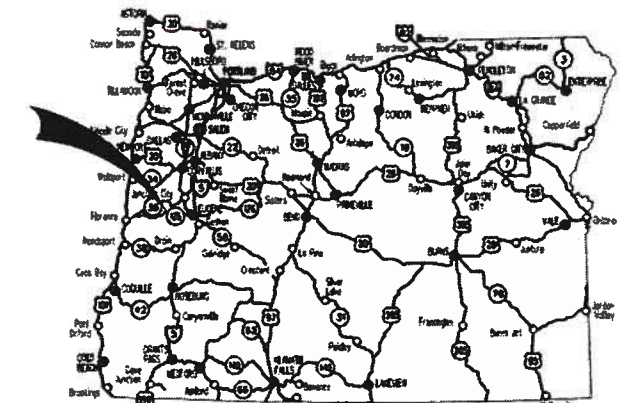
- **ODOT Project Plan Sheets**
 - *Cover/Title Sheet*
 - *Water Quality/Detention Plan Sheets*
 - *Other Details*

INDEX OF SHEETS	
SHEET NO.	DESCRIPTION
A01	Title Sheet
A02	Index Of Sheets Cont'd. & Std. Drg. Nos.
A03 Thru A07 Incl.	Survey Control Data

STATE OF OREGON
 DEPARTMENT OF TRANSPORTATION

PLANS FOR PROPOSED PROJECT
 GRADING, PAVING & SIGNING

OR126: WALKER CREEK - CHICKAHOMINY CREEK SEC.
 FLORENCE - EUGENE HWY.



Overall Length Of Project - 0.8 Miles

ATTENTION:
 Oregon Law Requires You To Follow Rules Adopted By The Oregon Utility Notification Center. Those Rules Are Set Forth In OAR 952-001-0010 Through OAR 952-001-0090. You May Obtain Copies Of The Rules By Calling The Center. (Note: The Telephone Number For The Oregon Utility Center Is (503) 232-1987.)



OREGON TRANSPORTATION COMMISSION
 Tammy Boney CHAIR
 Bob Van Brocklin VICE-CHAIR
 Alando Simpson COMMISSIONER
 Julie Brown COMMISSIONER
 Martin Callery COMMISSIONER
 Matthew L. Garrett DIRECTOR OF TRANSPORTATION

These plans were developed using ODOT design standards. Exceptions to these standards, if any, have been submitted and approved by the ODOT Chief Engineer or their delegated authority.

Approving Authority: James E. West Dec 12 2018 8:26 AM
 Signature & date
 James E. West - R2 Tech Center Manager
 Print name and title
 Steven B Cooley Dec 14 2018 11:12 AM
 Concurrence by ODOT Chief Engineer

OR126: WALKER CREEK - CHICKAHOMINY CREEK SEC.
 FLORENCE - EUGENE HWY.
 LANE COUNTY

FEDERAL HIGHWAY ADMINISTRATION	PROJECT NUMBER	SHEET NO.
OREGON	STATE	A01

LANE COUNTY
 DECEMBER 2018

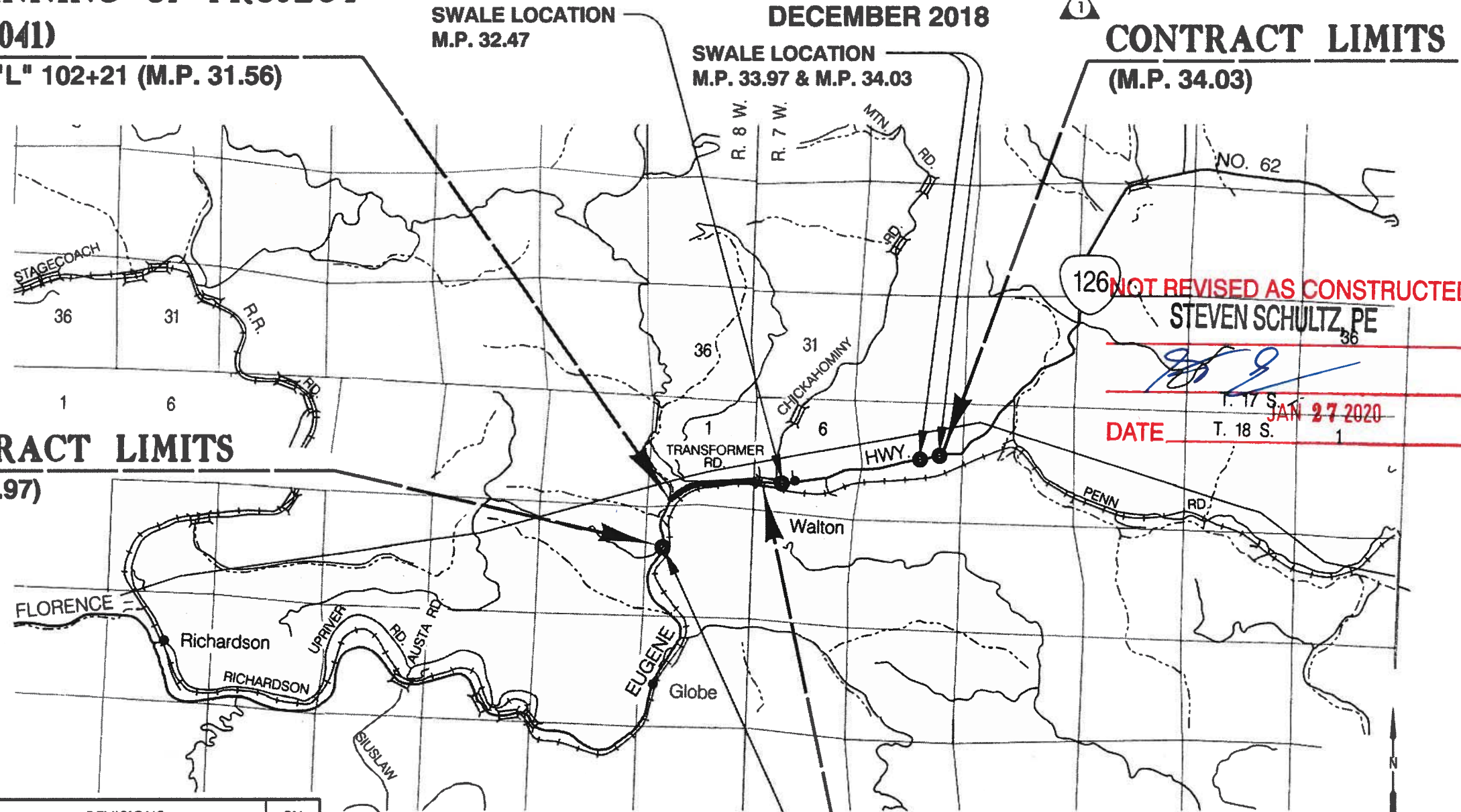
CONTRACT LIMITS
 (M.P. 34.03)

BEGINNING OF PROJECT
 S062(041)
 STA. "L" 102+21 (M.P. 31.56)

SWALE LOCATION
 M.P. 32.47

SWALE LOCATION
 M.P. 33.97 & M.P. 34.03

CONTRACT LIMITS
 (M.P. 30.97)



NOT REVISED AS CONSTRUCTED
 STEVEN SCHULTZ, PE
 DATE T. 17 S. JAN 27 2020
 T. 18 S. 1

SWALE LOCATION
 M.P. 30.97

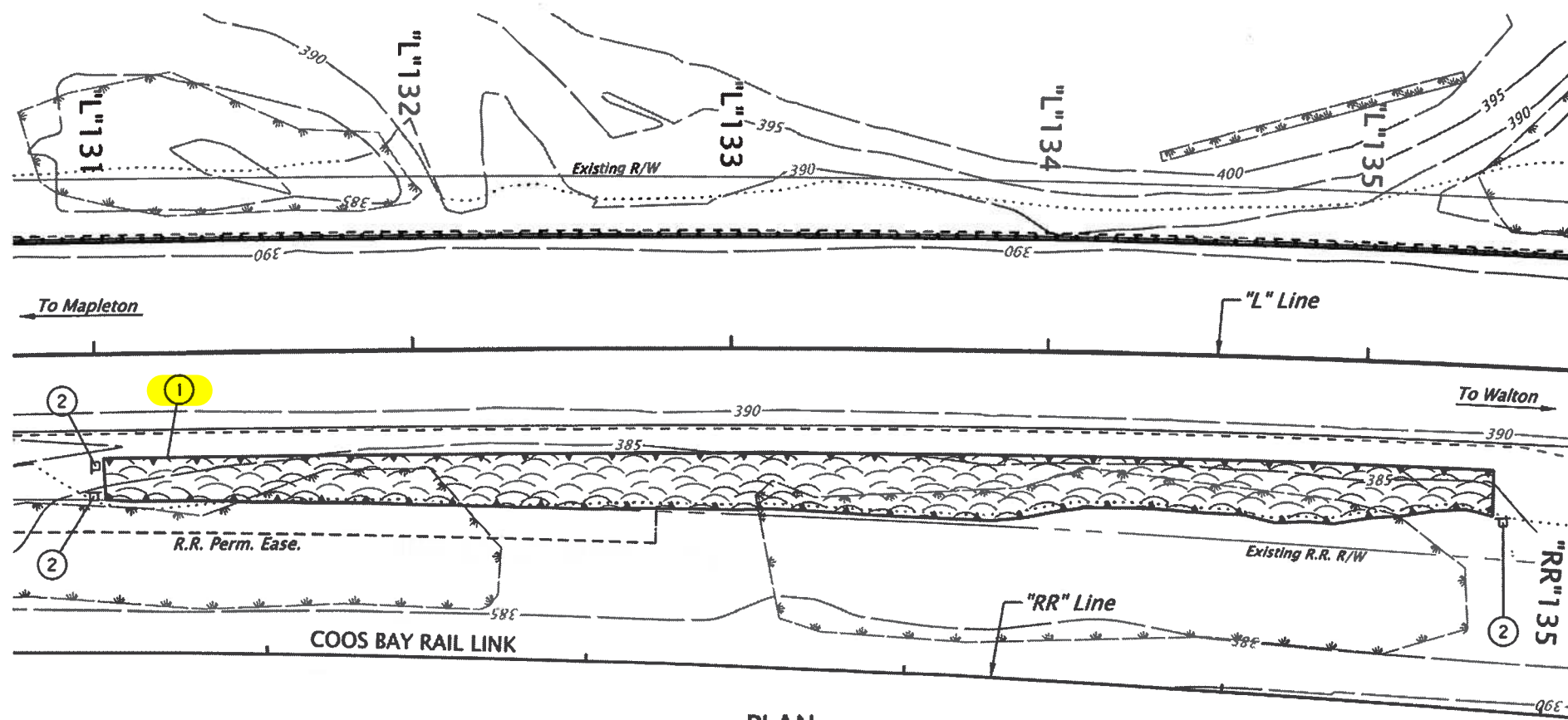
END OF PROJECT
 S062(041)
 STA. "L" 145+70 (M.P. 32.36)

T. 18 S., R. 7 & 8 W., W.M.



No.	DATE	REVISIONS	BY
1	12-13-18	Added contract limits	S.T.

PE002619



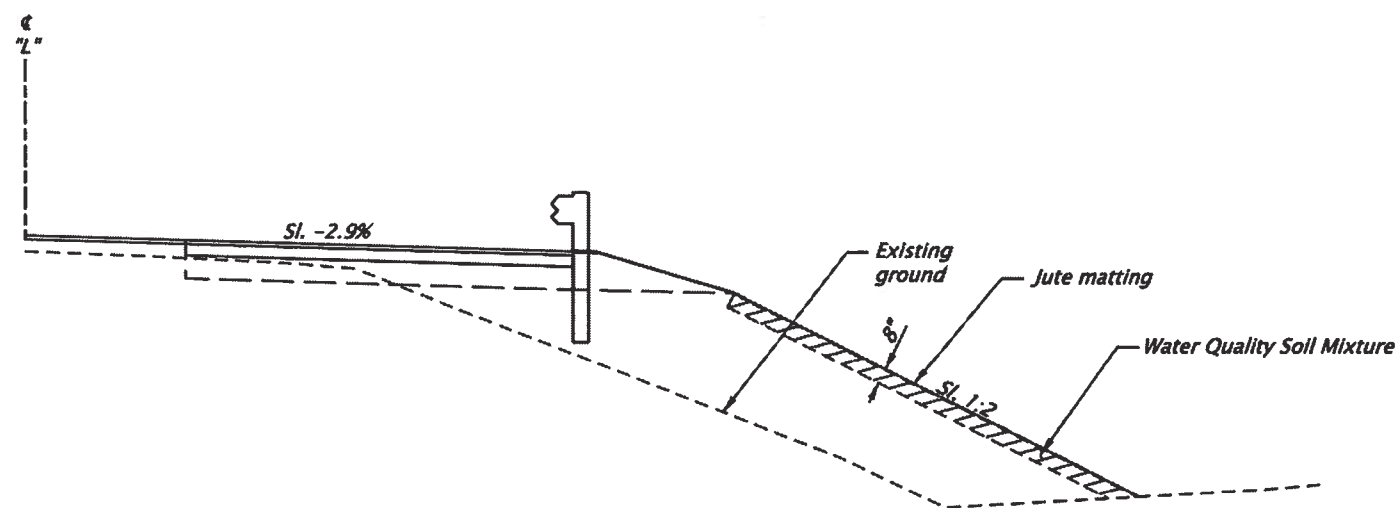
PLAN

① Sta. "L" 131+00 Rt. to Sta. "L" 135+40 Rt.
Construct Water Quality Filter Strip No. 01071
Water Quality Mixture - 211 cu. yd.

② Install stormwater facility marker
(See RD399)


LEGEND

 Water Quality Filter Strip

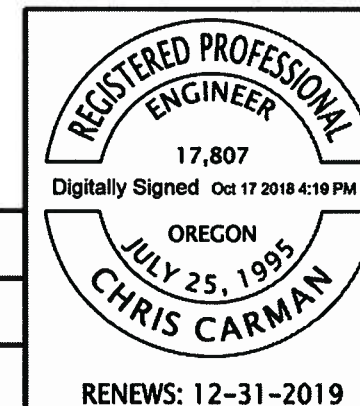


TYPICAL SECTION
STA. "L" 131+00 TO STA. "L" 135+40

REVISED AS CONSTRUCTED
STEVEN SCHULTZ, PE



DATE JAN 27 2020

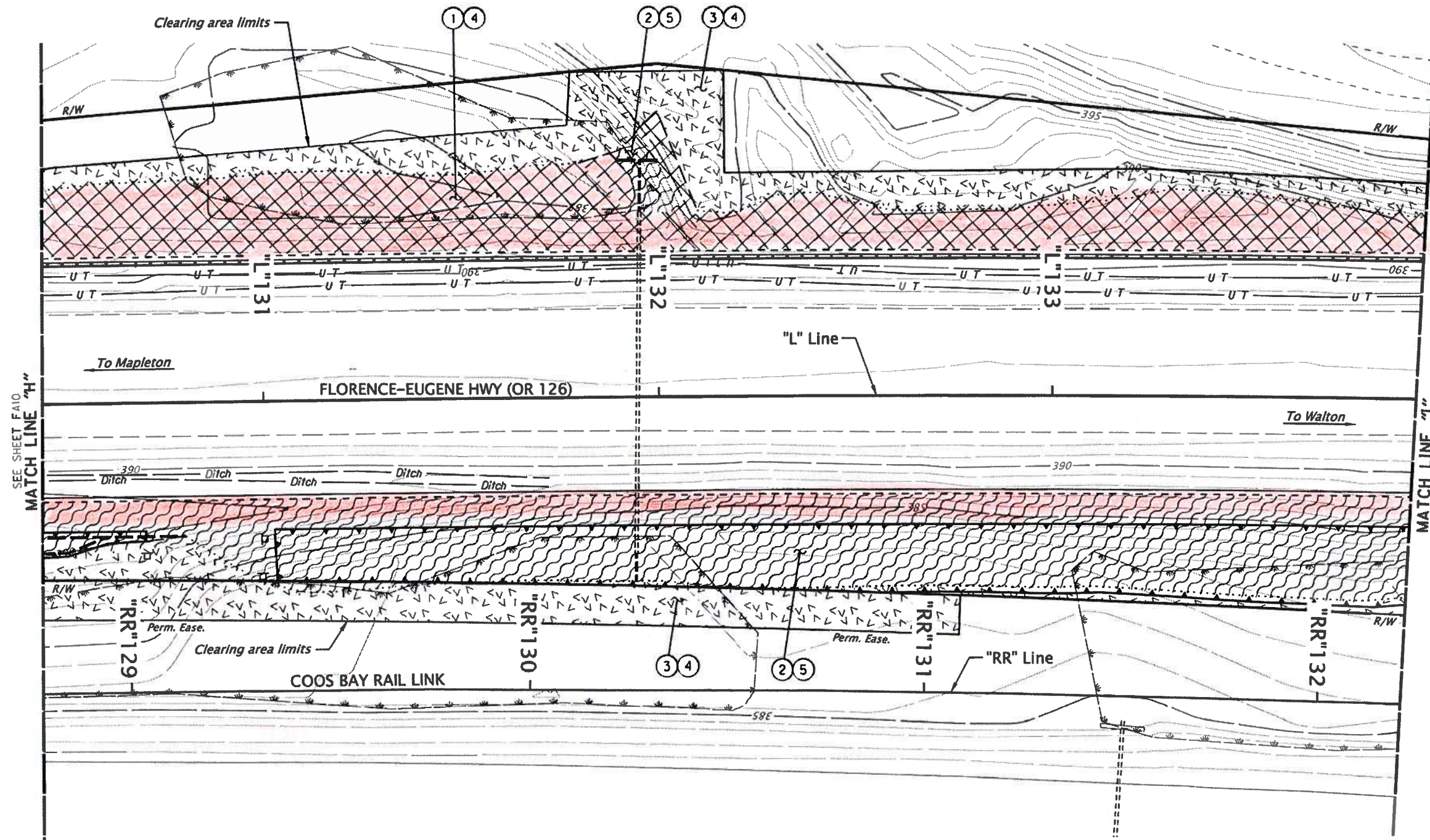
Notes:
1. All slopes shown as vertical to horizontal or percentage.
2. For details not shown see sheet BA02.



HWY: 126
M.P.:
TRS
N/A
DFI/TSSU NO.
D01071

RENEWS: 12-31-2019

OREGON DEPARTMENT OF TRANSPORTATION 	
OR126: WALKER CREEK - CHICKAHOMINY CREEK SEC. FLORENCE - EUGENE HIGHWAY, LANE COUNTY	
Designer: Chris Carman Drafter: Julie Rentz	Reviewer: Bo Miller Checker: N/A
STORMWATER	
SHEET NO. HA04	



- LEGEND AND NOTES:**
- ① Inst. Permanent seeding mix #1
At cut and fill slopes
 - ② Inst. Permanent seeding mix #2
 - ③ Inst. Permanent seeding mix #1
At tree clearing area
 - ④ Inst. matting, Type D over
Permanent seeding mix #1
 - ⑤ Inst. matting, Type F over
Permanent seeding mix #2 and
on slopes 1V:2H or greater
- Wetlands
- Water Quality Biofiltration Swale

[Red box symbol] = No seed, stone embankment fill

REVISED AS CONSTRUCTED
STEVEN SCHULTZ, PE

[Signature]
DATE JAN 27 2020



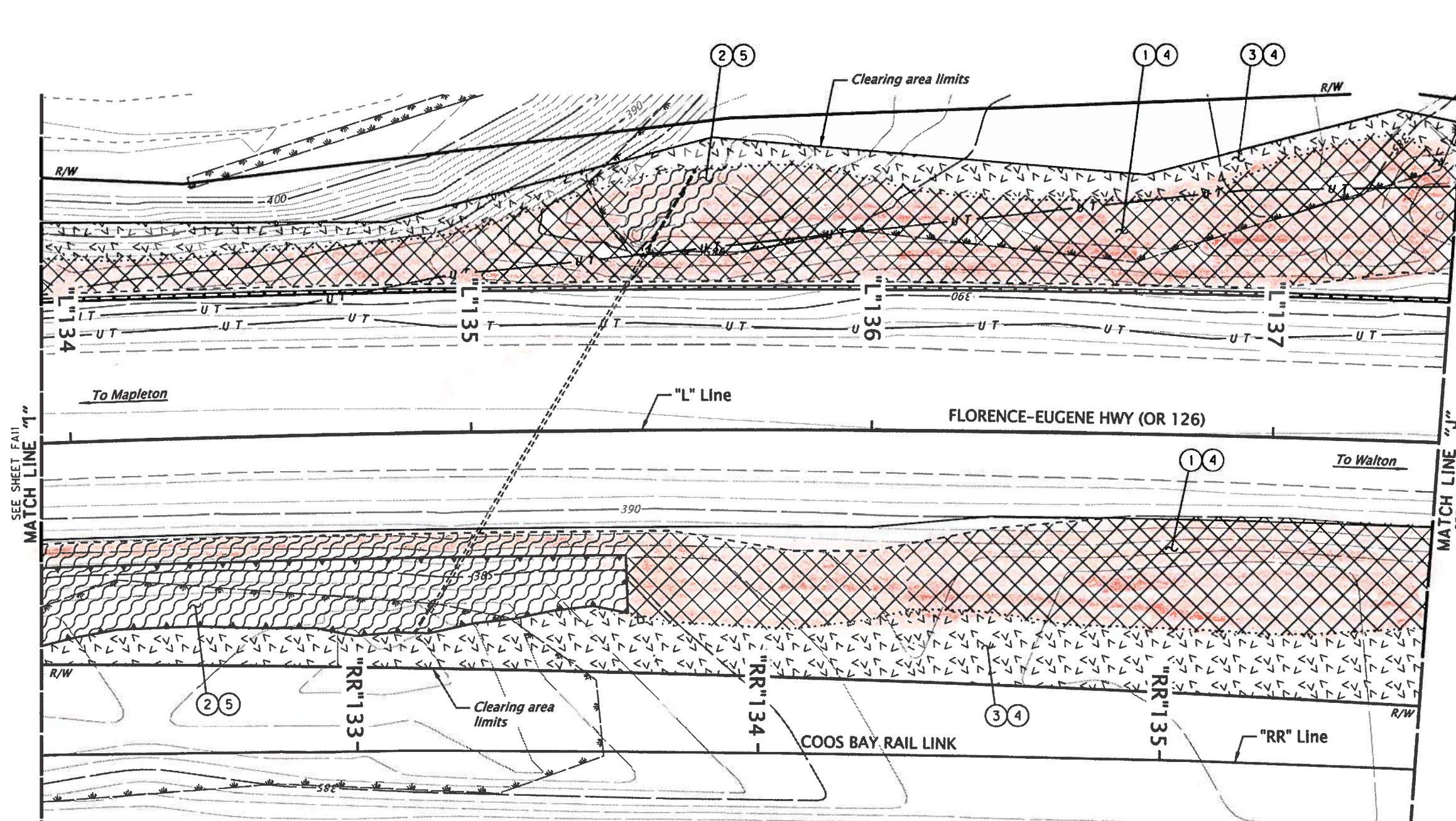
REGISTERED
 0938
 Digital Signature Nov 8 2018 6:36 PM
CELINE LIVENGOOD
 OREGON
 06/06/17
LANDSCAPE ARCHITECT
 EXPIRES: 06-30-2019

OREGON DEPARTMENT OF TRANSPORTATION

OR126: WALKER CREEK - CHICKAHOMINY CREEK SEC.
 FLORENCE - EUGENE HIGHWAY,
 LANE COUNTY

Designer: Celine Livengood Reviewer: Bob Marshall
 Drafter: Michael Skelton Checker: N/A

ROADSIDE DEVELOPMENT PLAN SHEET NO. FA11



- LEGEND AND NOTES:**
- ① Inst. Permanent seeding mix #1
At cut and fill slopes
 - ② Inst. Permanent seeding mix #2
 - ③ Inst. Permanent seeding mix #1
At tree clearing area
 - ④ Inst. matting, Type D over
Permanent seeding mix #1
 - ⑤ Inst. matting, Type F over
Permanent seeding mix #2 and
on slopes 1V:2H or greater
- Wetlands
- Water Quality Biofiltration Swale

REVISED AS CONSTRUCTED

STEVEN SCHULTZ, PE

DATE JAN 27 2020



= No seed, stone embankment fill

REGISTERED
0938
Digital Signature Nov 8 2018 6:39 PM
CELINE LIVENGOOD
OREGON
06/06/17
LANDSCAPE ARCHITECT
EXPIRES: 06-30-2019

OREGON DEPARTMENT OF TRANSPORTATION		
OR126: WALKER CREEK - CHICKAHOMINY CREEK SEC. FLORENCE - EUGENE HIGHWAY, LANE COUNTY		
Designer: Celine Livengood	Reviewer: Bob Marshall	ROADSIDE DEVELOPMENT PLAN
Drafter: Michael Skelton	Checker: N/A	
SHEET NO. FA12		FA12

Appendix C

Content:

- Photos



