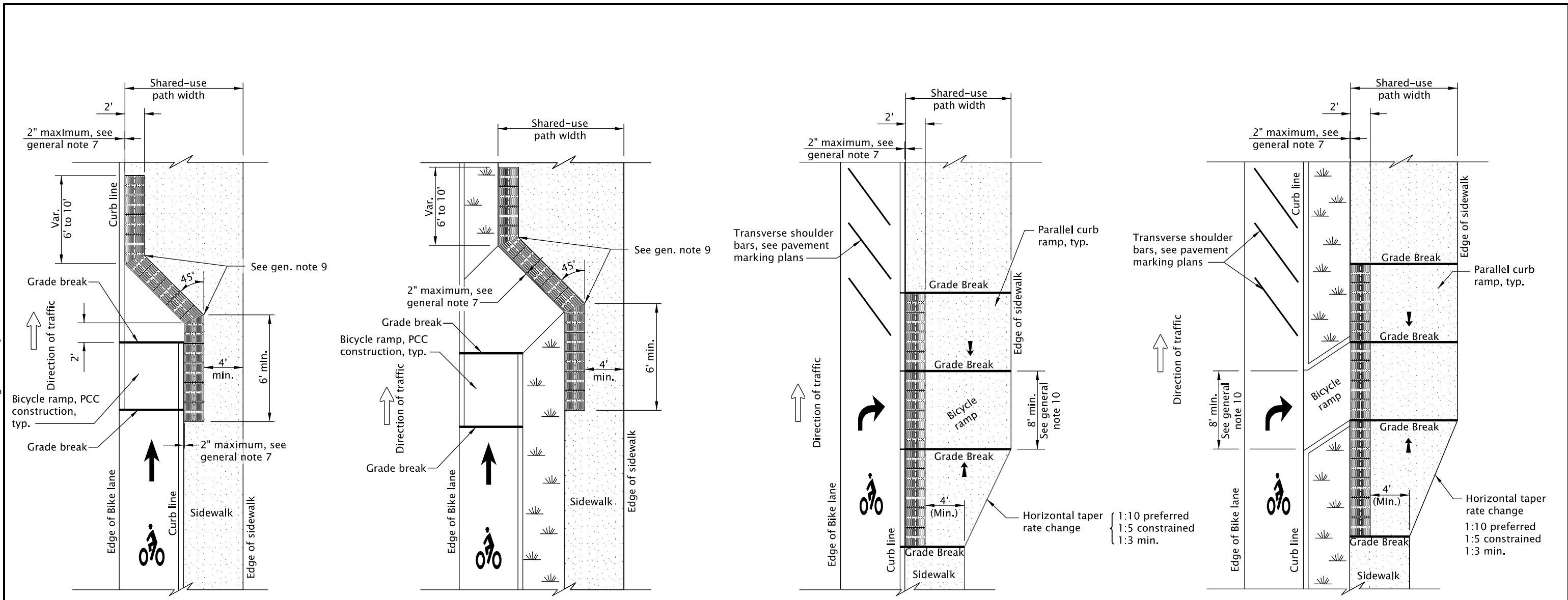


rd909.dgn 14-JAN-2022



**OPTION "BR-1"**  
BICYCLE LANE DROP TO CURB LINE SIDEWALK

**OPTION "BR-2"**  
BICYCLE LANE DROP TO SEPARATED SIDEWALK

**OPTION "BR-3"**  
BICYCLE LANE PARALLEL RAMP APPROACH

**OPTION "BR-4"**  
BICYCLE LANE ANGLED RAMP APPROACH

**LEGEND:**

- Detectable guide strip
- Sidewalk
- Running slope 7.5% maximum (maximum 8.3% finished surface slope)

**GENERAL NOTES FOR ALL DETAILS ON THIS SHEET:**

1. Bicycle ramp details are based on applicable ODOT Standards. If curb ramp serves both bicycles and pedestrians, do not use this drawing. See Std. Dwg. RD902.
2. See project plans for details not shown. See Std. Dwg. RD700 and RD702 for curbs. See Std. Dwg. RD720 & RD721 for sidewalks. See Std. Dwg. RD920 for parallel curb ramp details. See Std. Dwg. RD1140 for separated bike lanes. See Std. Dwg. TM500 for transverse shoulder bars details.
3. Site conditions normally require a project specific design. See project plans for details not shown.
4. Curb ramps for shared use paths intersecting a roadway shall be full width of path, excluding flares.

5. Detectable guide strip color shall be blue if no color specified. Color shall be contrasting to the surrounding area, light on dark, or dark on light. Blue markings are reserved for accessibility features. Alternative colors require a design exception on or along state highways.
6. Agency review and approval required for detectable guide strip products.
7. Detectable guide strip shall be placed a maximum of 2-inches from the edge of the sidewalk.
8. Place abutting panels within 1/4-inch of each other and install anchors, as specified by manufacturers, along cut edge.
9. Miter panels at 45 degree angle. Detectable guide strips may be cut to meet necessary shape as shown.
10. When a curb ramp is used to provide bicycle access from a roadway to a sidewalk, the curb ramp opening will be  $\geq$  8' wide.

CALC. BOOK NO. <u>N/A</u>	SDR DATE <u>14-JAN-2022</u>
NOTE: All material and workmanship shall be in accordance with the current Oregon Standard Specifications	
<b>OREGON STANDARD DRAWINGS</b>	
<b>DETECTABLE GUIDE STRIP PLACEMENT AT BIKE RAMPS</b>	
2021	
DATE	REVISION DESCRIPTION
12-2021	NEW DRAWING CREATED

*The selection and use of this Standard Drawing, while designed in accordance with generally accepted engineering principles and practices, is the sole responsibility of the user and should not be used without consulting a Registered Professional Engineer.*