



Bike Boxes and Green Bike Lanes

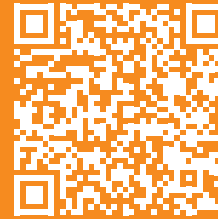
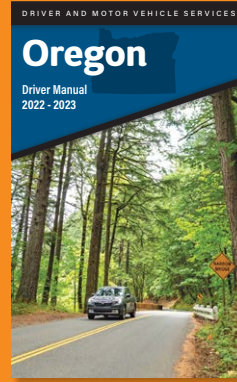
Bike boxes are green painted boxes on the road with a white bicycle symbol. Bike lanes approaching and leaving the box may also be green. This indicates a potential point of conflict, so pay extra attention to people riding bicycles.

As a driver, you must stop for a traffic signal behind the bike box. Do not stop in the box. People riding bicycles will move into the box in front of you at the intersection. No turns are allowed at these intersections when the traffic signal is red. If turning right on a green light, you must signal and yield to people riding bicycles on the right.

Do not drive or park in a bike lane. You may cross a bike lane when turning or when entering or leaving an alley, driveway, or private road. You may not move into a bike lane in preparation for a turn. (ORS 811.440(2))

Drivers must yield to people riding bicycles in a bike lane or on a crosswalk before turning across the lane or crosswalk.

You may not use a bike lane to pass another vehicle!



The Oregon Driver Manual is available online in Spanish and English at

https://www.oregon.gov/odot/dmv/pages/online_manual/table_of_contents.aspx or at any DMV office.

**KNOWING TRAFFIC LAWS,
FOLLOWING THEM, AND DRIVING SAFELY
IS CARING ABOUT YOUR COMMUNITY.**

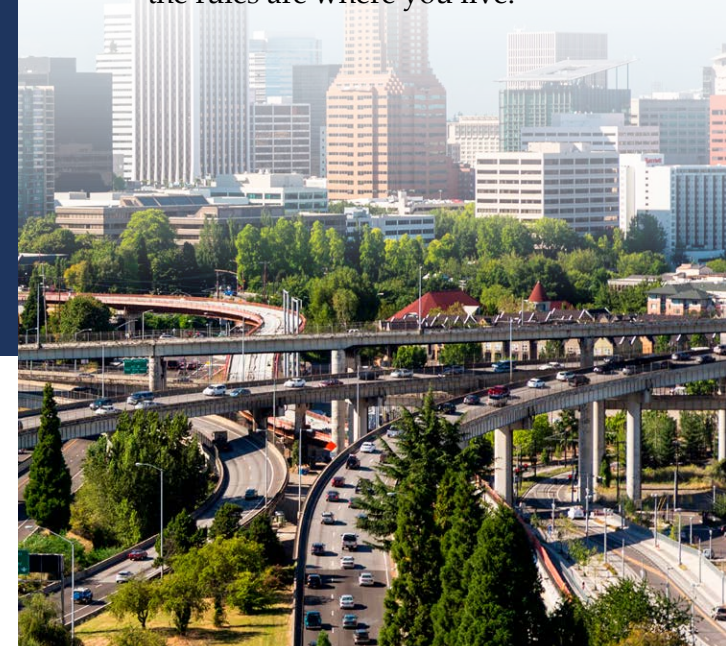
**THANK YOU FOR HELPING
OREGONIANS GET HOME SAFELY.**



Oregon Traffic Law Basics

Getting from one place to another safely is crucial. When you drive, it's your responsibility to make sure you and others arrive at their destinations safely.

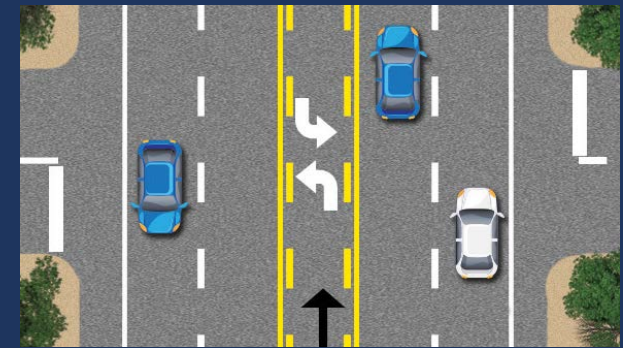
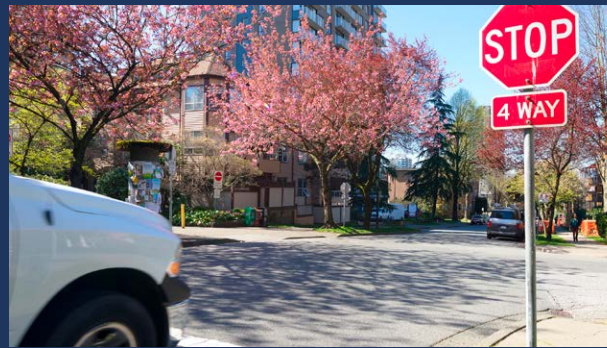
Driving is a privilege, and as a driver, it is your job to pay attention, follow the rules of the road, and be aware of others on the road—people who walk, roll, and ride. Keep in mind that different states have different traffic laws, so it is important to know what the rules are where you live.





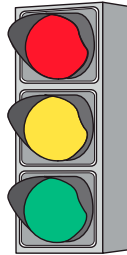
Stop Means Stop!

Stop means the “complete cessation from movement.” Drivers must stop completely at a stop sign, and even if there is not a stop sign, drivers are required to stop before entering a roadway. For example, if you are exiting a business parking lot or an alley, you must make a complete stop before the sidewalk. (ORS 801.510)





Traffic Signals


Traffic signals control the right of way and provide for a smooth, orderly flow of traffic. *If a signal appears dark, such as during a power failure, you should stop as if there are stop signs in all directions.*




IN OREGON, YELLOW MEANS STOP!

 **Steady Yellow**—A steady yellow signal warns you that the signal is about to turn red. Stop before entering the intersection. If you cannot stop safely, drive carefully through it.

 **Flashing Yellow**—A flashing yellow signal means slow down and proceed with caution.

 **Yellow Arrow**—A steady yellow arrow warns you that the signal is about to turn red. Stop before entering the intersection, or if you cannot stop safely, drive carefully through it.

 **Flashing Yellow Arrow**—**In Oregon, yellow means stop.** A flashing yellow arrow means that you may make the movement indicated by the arrow, but first you must yield to pedestrians and oncoming traffic. Oncoming traffic has a steady green signal.



Steady Red—A steady red signal means stop and remain stopped until the signal changes.

You are allowed to make the following turns on red after coming to a **complete stop** unless prohibited by a sign “No turn on red,” or a police officer directs otherwise.

- When entering a two-way road, you may turn right.
- When entering a one-way road, you may turn right or left in the direction of the one-way road.



Flashing Red—A flashing red signal is treated the same as a stop sign.



Red Arrow—A steady red arrow means stop and remain stopped until the signal changes, except for allowed turns on red. The same turns allowed for a steady red signal are allowed for a red arrow.



Steady Green—A green signal means all movements—straight ahead, left or right turns—are permitted. *Left must first yield to pedestrians and oncoming traffic. Right turns must first yield to pedestrians.*



Green Arrow—A steady green arrow means you have the right of way and may make the movement indicated by the arrow.

Pavement Markings

Two-way special left turn lane—If a two-way left turn lane has been provided, do not make a left turn from any other lane. It is illegal to travel in a two-way left turn lane, so enter the lane just before you want to make the turn. Wait in the left turn lane until traffic clears and you can complete the turn.

You may turn from a side street or driveway into a two-way left turn lane. **You must stop to wait for traffic to clear before moving into the lane to your right.** Make sure the left turn lane is clear in both directions before entering the lane. **It is illegal to use these lanes to speed up and merge with traffic or for passing cars to access a turn lane at an intersection. If traffic is backed up, you cannot use the turn lane to avoid congestion.** (ORS 311.346)

Passing

When passing another vehicle on a two-lane road, you should pass only to the left of the vehicle. Your pass may not begin before the start of a passing zone and must be completed before you enter a no-passing zone (ORS 811.420). Do not exceed the speed limit when passing. It is against the law to exceed speed limits at any time.

It is illegal to pass on the shoulder. (ORS 811.415)