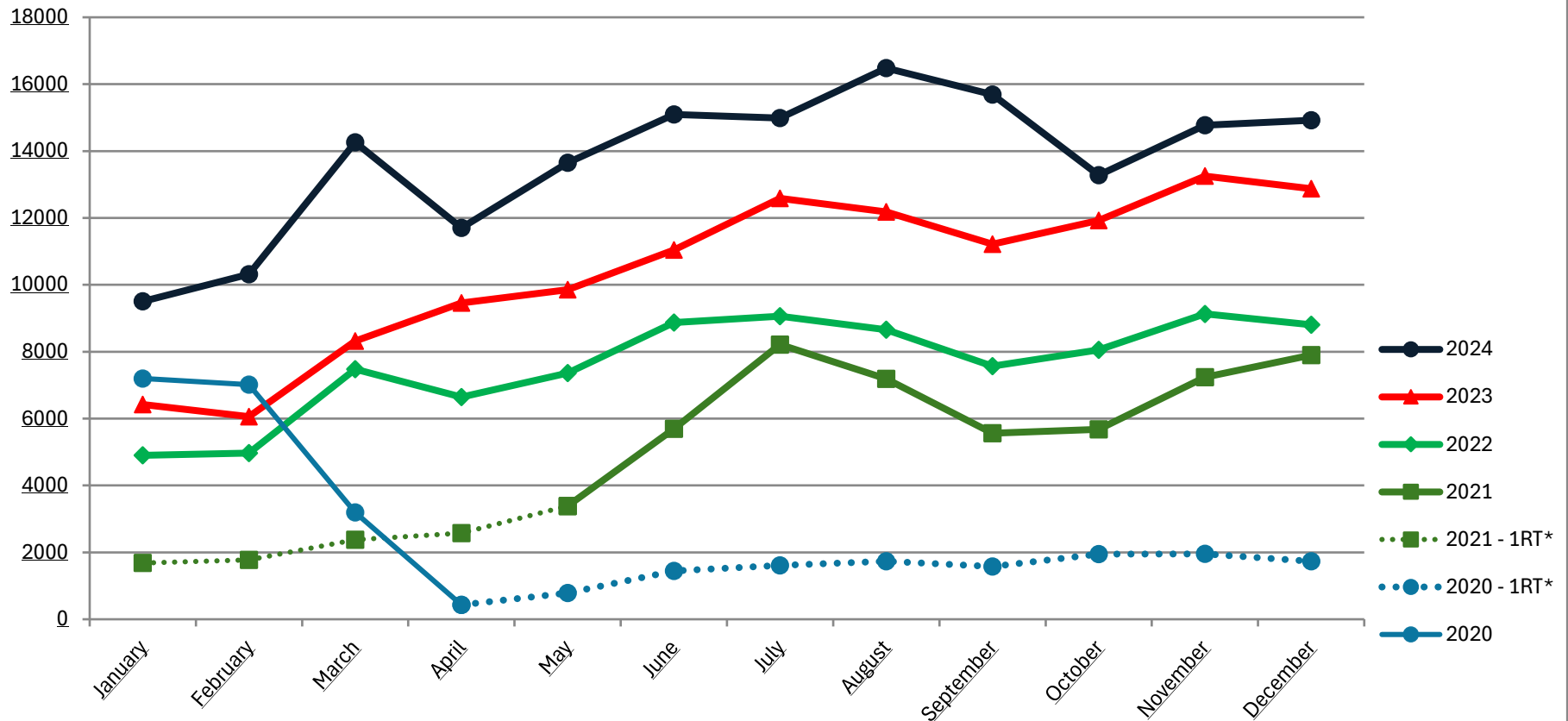


## Amtrak Cascades Ridership in the Eugene – Portland Corridor Trains Operated Under Contract for the Oregon Department of Transportation



The COVID-19 pandemic and the resulting decreases in demand led to the decision to reduce service to one round trip per day between Seattle and Eugene. Service was resumed to two daily round trips on May 24, 2021. The dotted lines above depict the timeframe when the service was reduced to one roundtrip daily.

\*RT = Roundtrip PDX-EUG

## Amtrak Cascades Ridership in the Eugene-Portland Corridor

TRAINS OPERATED UNDER CONTRACT FOR THE OREGON DEPARTMENT OF TRANSPORTATION

TRAIN		JAN	FEB	MAR	APR	MAY	JUN	JUL	AUG	SEP	OCT	NOV*	DEC*	YEAR	
504	2 0 2 4	2,219	2,851	3,967	3,226	3,800	4,369	4,237	5,140	5,504	4,206	4,155	4,232	47,906	
508		2,287	2,415	3,499	2,785	3,331	3,390	3,371	3,441	2,792	2,649	3,663	3,546	37,169	
Northbound Trains		4,506	5,266	7,466	6,011	7,131	7,759	7,608	8,581	8,296	6,855	7,818	7,778	85,075	
505		2,602	2,175	3,313	2,715	2,983	1,027								14,815
507		2,397	2,874	3,484	2,976	3,538	3,643	3,678	4,158	4,420	3,462	3,453	3,247	41,330	
503							2,664	3,702	3,741	2,971	2,964	3,499	3,899	23,440	
Southbound Trains		4,999	5,049	6,797	5,691	6,521	7,334	7,380	7,899	7,391	6,426	6,952	7,146	79,585	
All		9,505	10,315	14,263	11,702	13,652	15,093	14,988	16,480	15,687	13,281	14,770	14,924	164,660	
500	2 0 2 3	1,469	1,526	2,253	1,844	2,146	2,323	2,653	2,670	2,554	2,546	2,768	786	25,538	
504													2,462	2,462	
508		1,288	1,348	1,897	2,346	2,571	2,788	3,152	2,957	2,759	3,209	3,526	3,358	31,199	
Northbound Trains		2,757	2,874	4,150	4,190	4,717	5,111	5,805	5,627	5,313	5,755	6,294	6,606	59,199	
503		2,018	1,720	2,253	2,527	2,514	3,034	3,346	3,263	2,838	2,924	3,453	822	30,712	
505		1,647	1,465	1,915	2,739	2,620	2,900	3,431	3,293	3,069	3,249	3,504	3,406	33,238	
507													2,044	2,044	
Southbound Trains		3,665	3,185	4,168	5,266	5,134	5,934	6,777	6,556	5,907	6,173	6,957	6,272	65,994	
All	6,422	6,059	8,318	9,456	9,851	11,045	12,582	12,183	11,220	11,928	13,251	12,878	125,193		
TRAIN		JAN	FEB	MAR	APR	MAY	JUN	JUL	AUG	SEP	OCT	NOV	DEC	YEAR	
500	2 0 2 2	999	1,032	1,587	1,430	1,637	1,863	1,804	1,956	1,693	1,762	1,903	2,168	19,834	
508		1,246	1,392	2,023	1,712	1,835	2,283	2,399	2,281	1,885	2,098	2,361	2,243	23,758	
Northbound Trains		2,245	2,424	3,610	3,142	3,472	4,146	4,203	4,237	3,578	3,860	4,264	4,411	43,592	
503		1,354	1,304	1,980	1,803	2,063	2,790	2,744	2,455	2,114	2,036	2,297	2,205	25,145	
505		1,303	1,245	1,887	1,699	1,830	1,936	2,115	1,963	1,880	2,160	2,571	2,192	22,781	
Southbound Trains		2,657	2,549	3,867	3,502	3,893	4,726	4,859	4,418	3,994	4,196	4,868	4,397	47,926	
All		4,902	4,973	7,477	6,644	7,365	8,872	9,062	8,655	7,572	8,056	9,132	8,808	91,518	
TRAIN			JAN	FEB	MAR	APR	MAY	JUN	JUL	AUG	SEP	OCT	NOV	DEC	YEAR
500	2 0 2 1	714	839	1,106	1,159	1,267	1,305	1,857	1,727	1,423	1,289	1,501	1,605	15,792	
508						287	1,250	1,948	1,602	1,337	1,399	1,967	2,179	11,969	
Northbound Trains		714	839	1,106	1,159	1,554	2,555	3,805	3,329	2,760	2,688	3,468	3,784	27,761	
503						304	1,682	2,261	1,929	1,423	1,485	1,911	2,349	13,344	
505		968	938	1,268	1,420	1,530	1,462	2,149	1,931	1,377	1,500	1,862	1,761	18,166	
Southbound Trains		968	938	1,268	1,420	1,834	3,144	4,410	3,860	2,800	2,985	3,773	4,110	31,510	
All		1,682	1,777	2,374	2,579	3,388	5,699	8,215	7,189	5,560	5,673	7,241	7,894	59,271	
TRAIN			JAN	FEB	MAR	APR	MAY	JUN	JUL	AUG	SEP	OCT	NOV	DEC	YEAR
500	2 0 2 0	1,357	1,359	606	194	328	615	737	812	730	853	854	765	9,210	
506		832	871	297										2,000	
508		1,557	1,597	760										3,914	
Northbound Trains		3,746	3,827	1,663	194	328	615	737	812	730	853	854	765	15,124	
511 (M-F)		474	464	228										1,166	
513 (S-S-H)		445	438	131										1,014	
505		2,535	2,286	1,172	237	460	833	871	920	851	1,095	1,099	966	13,325	
Southbound Trains		3,454	3,188	1,531	237	460	833	871	920	851	1,095	1,099	966	15,505	
All	7,200	7,015	3,194	431	788	1,448	1,608	1,732	1,581	1,948	1,953	1,731	30,629		