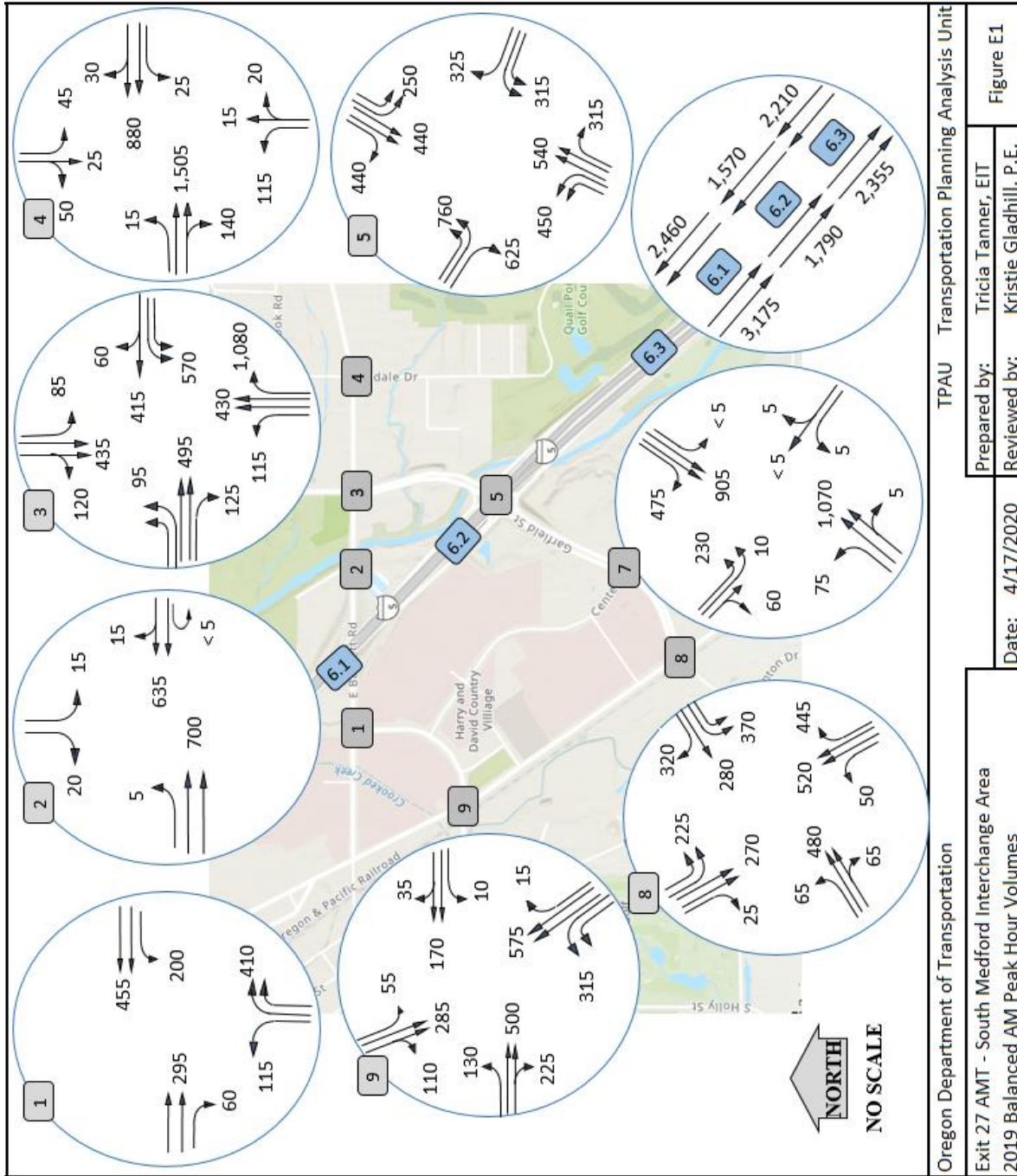


Technical Memorandum #2 Technical Appendices
Appendix E – 2019 Balanced Volumes

2019 Traffic Balances

Volume balances were started with the seasonally adjusted counts. The balance was started at the I-5 Exit 27 interchange, and balanced working outward from there in both directions through the network. Balances were rounded to the nearest five (5) vehicles. Note that since counts were not taken for the Stewart Avenue/Center Drive intersection, the network was not balanced between Stewart Avenue, at OR99 and Stewart Avenue at Barnett Road.

Figure E-1: 2019 Balanced AM Peak Hour Volumes



Oregon Department of Transportation		TPAU Transportation Planning Analysis Unit	
Exit 27 AMT - South Medford Interchange Area		Prepared by:	Tricia Tanner, EIT
2019 Balanced AM Peak Hour Volumes		Date:	4/17/2020
		Reviewed by:	Kristie Gladhill, P.E.
		Figure E1	

Figure E-2: 2019 Balanced PM Peak Hour Volumes

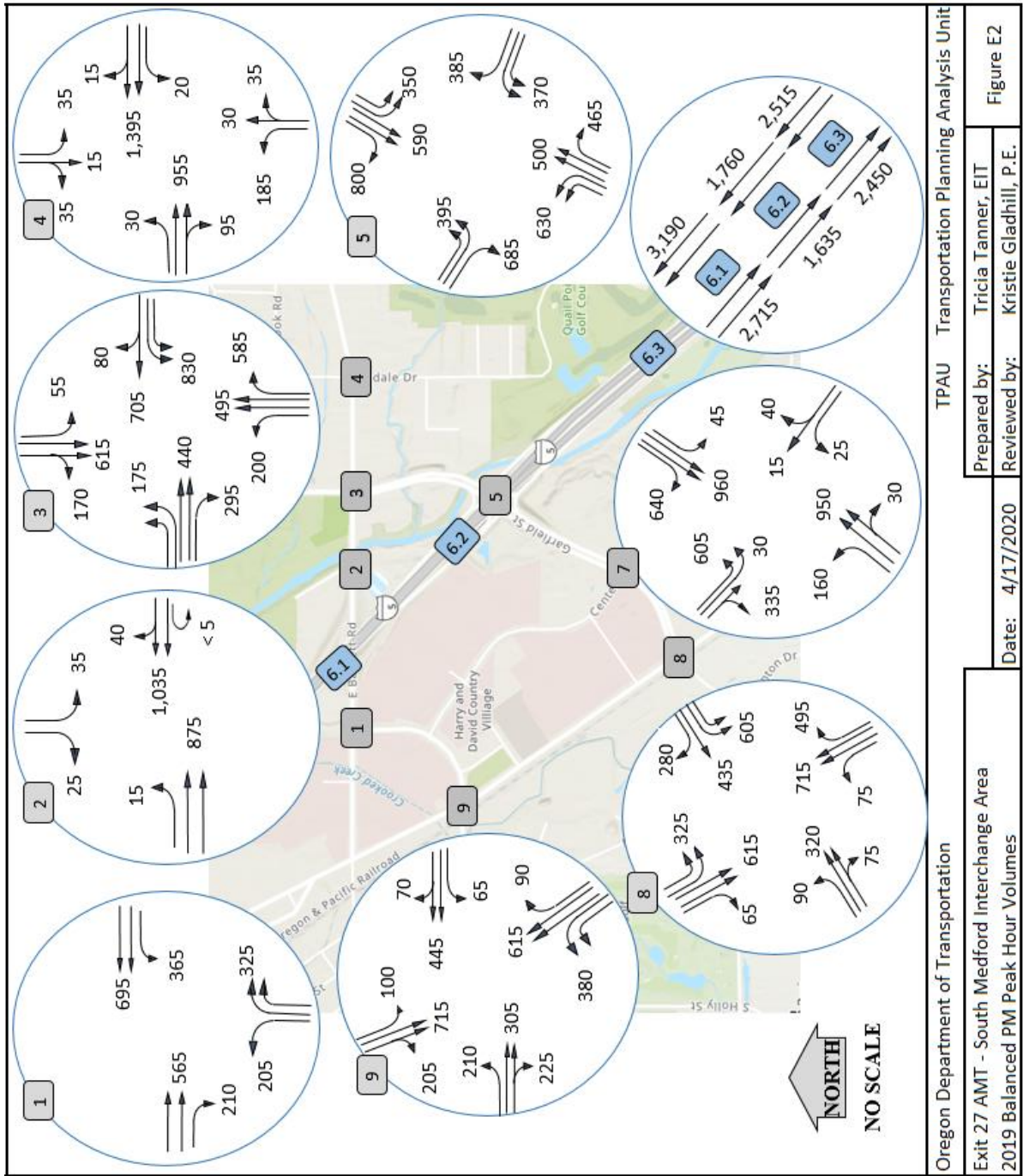
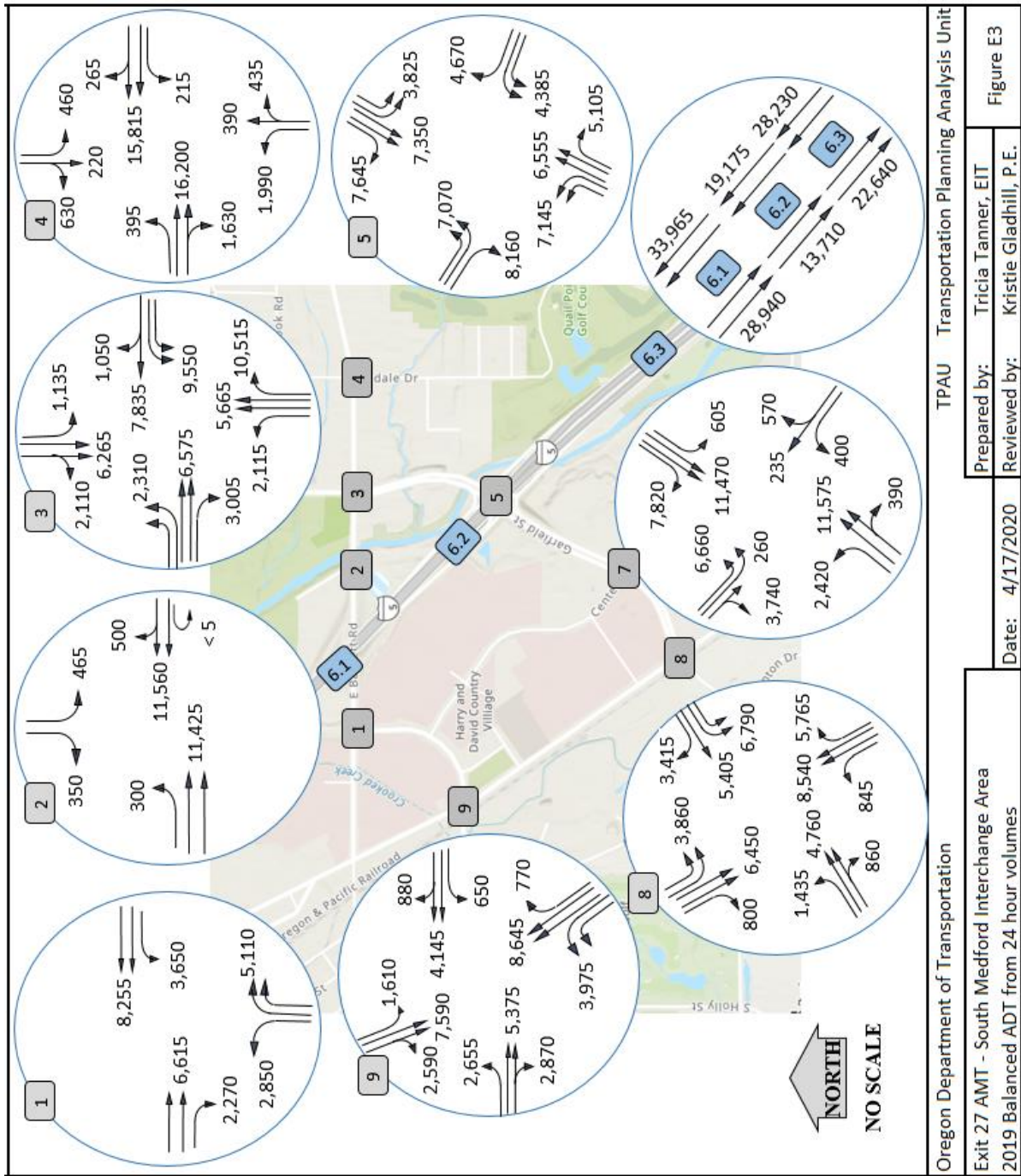


Figure E-3: 2019 Balanced ADT from 24 Hour Volumes



Contact Information

If you have any questions or comments please contact:
 Tricia Tanner at 503-986-3419, email: tricia.j.tanner@odot.state.or.us