

# Southern Oregon Wildlife Crossing Coalition

I-5 Wildlife Crossing Project  
Ashland to the California Border



Amy Amrhein  
Jack Williams

[myowf.org/sowcc](http://myowf.org/sowcc)

## Goal of Project

- The Southern Oregon Wildlife Crossing Coalition (SOWCC) is a broad-based partnership advocating for improved wildlife movement and increased safety for motorists in the Siskiyou Summit region of I-5 between Ashland and the California border.
- To accomplish this goal, we are working for the creation of a network of safe wildlife crossings. We support state and federal efforts to increase ecological connectivity and wildlife corridors while reducing dangerous wildlife-vehicle collisions.
- The SOWCC engages in education, outreach, coordination, and fundraising in partnership with our primary non-profit partner, the Oregon Wildlife Foundation.

# SWOCC Coalition Members

Oregon Department of Transportation  
Oregon Department of Fish and Wildlife  
Bureau of Land Management  
US Fish and Wildlife Service  
Southern Oregon University  
Oregon Hunters Association  
Oregon Backcountry Hunters & Anglers  
Soda Mountain Wilderness Council  
Southern Oregon Land Conservancy  
Pacific Forest Trust  
Trout Unlimited  
Rogue Valley Audubon Society  
KS Wild  
Selberg Institute  
SC Wildlands  
Wildlife Network  
The Office of Representative Pam Marsh

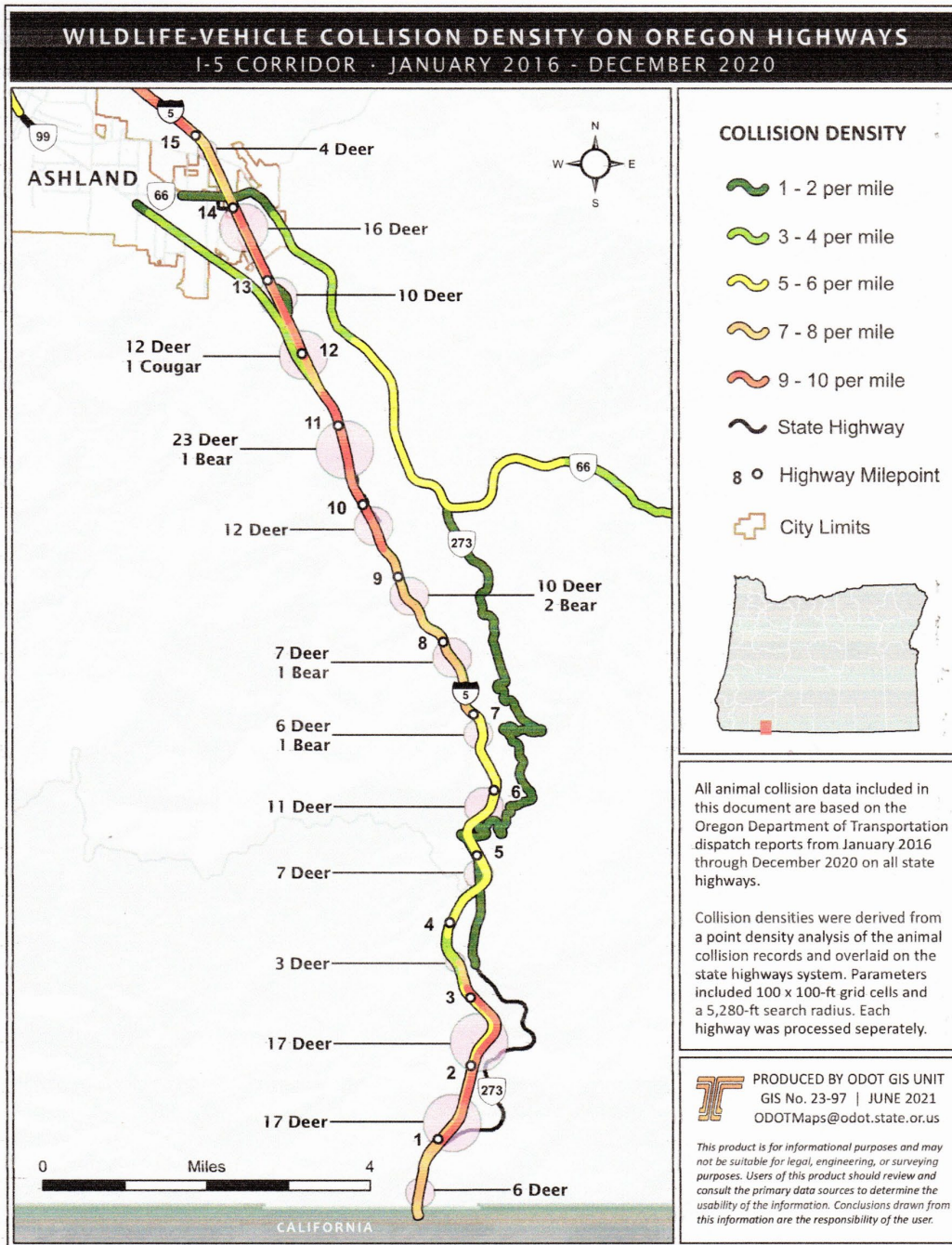


## ODOT WVC Map Jan 2016-Dec 2020

159 Deer  
5 Bear  
1 Cougar  
+ many unknown

## Average collision costs

Deer: \$9,068  
Elk: \$24,006



# Funding/Fundraising

- SOWCC Feasibility Study Funds
  - OWEB
  - Oregon Conservation and Recreation Fund
  - Carpenter Foundation
  - Private Fundraising
- HB 4130-1
  - Rep. Ken Helm introduced this bill in the Oregon Legislature's short session
  - Allocates \$7 million to wildlife crossing planning and construction
  - Creates a flexible account for ODOT
  - Creates a state match fund to use for IJA Wildlife Crossing Grant Program (local match TBD)
- Infrastructure Investment and Jobs Act Wildlife Crossing Grant Program
  - \$350 million appropriated over five years
  - ODOT Region 3 has identified this project for \$15 million from the IJA Wildlife Crossing grant
  - National competition
  - Other western states are ahead of Oregon in planning and being shovel ready
  - Oregon can compete

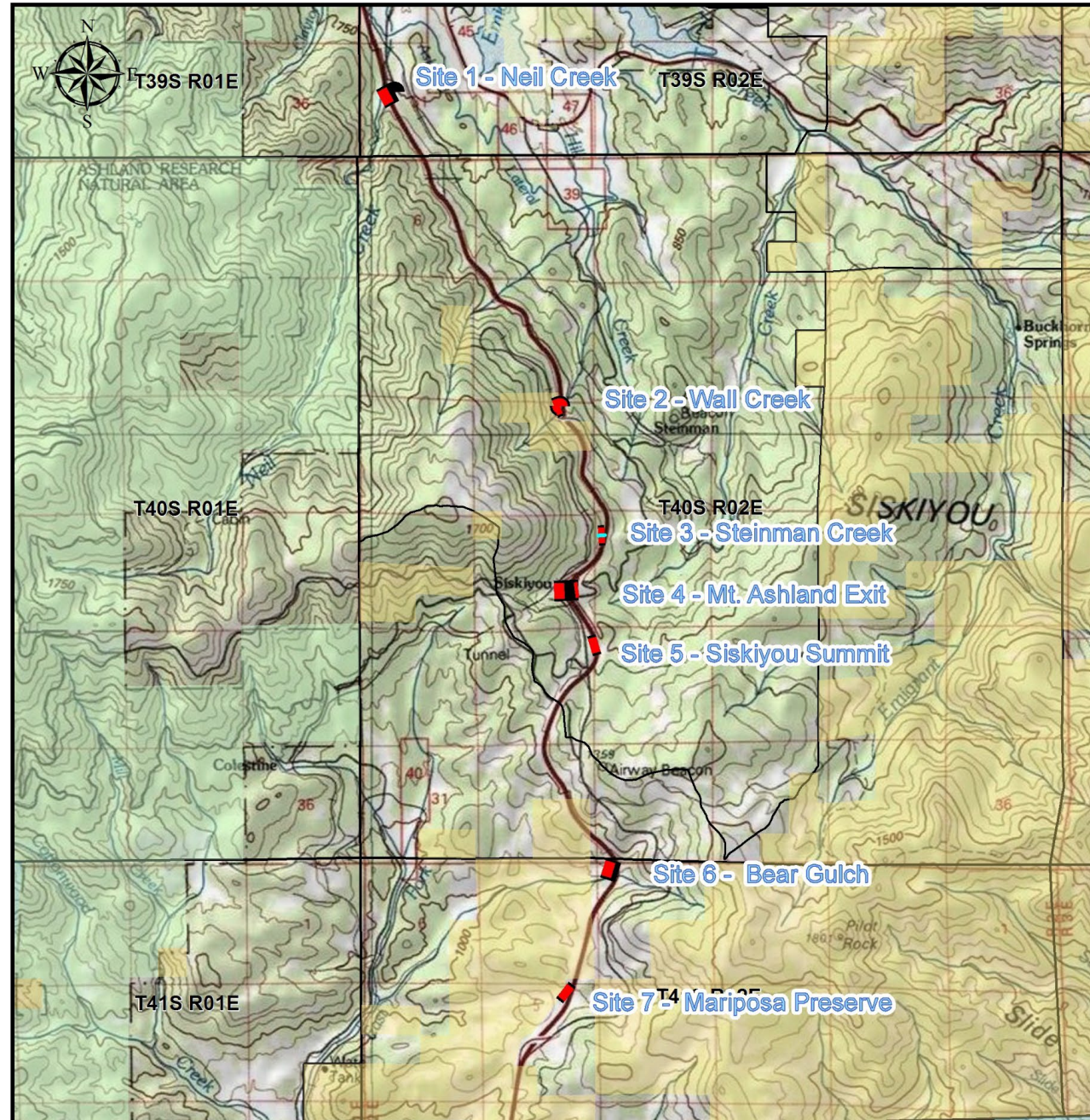


# WILDLIFE CORRIDOR FEASIBILITY SITES

## Highway I-5 from Ashland, Oregon, to California Border

### 7 feasibility sites

1. Neil Creek
2. Wall Creek
3. Steinman Creek
4. Mt. Ashland Exit
5. Siskiyou Summit
6. Bear Gulch
7. Mariposa Preserve





**Feasibility sites:  
Existing culverts and bridges of  
Fair to poor crossing quality**





**Bear Gulch Culvert 6.5'x7.5'**

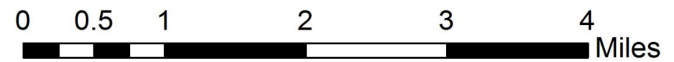
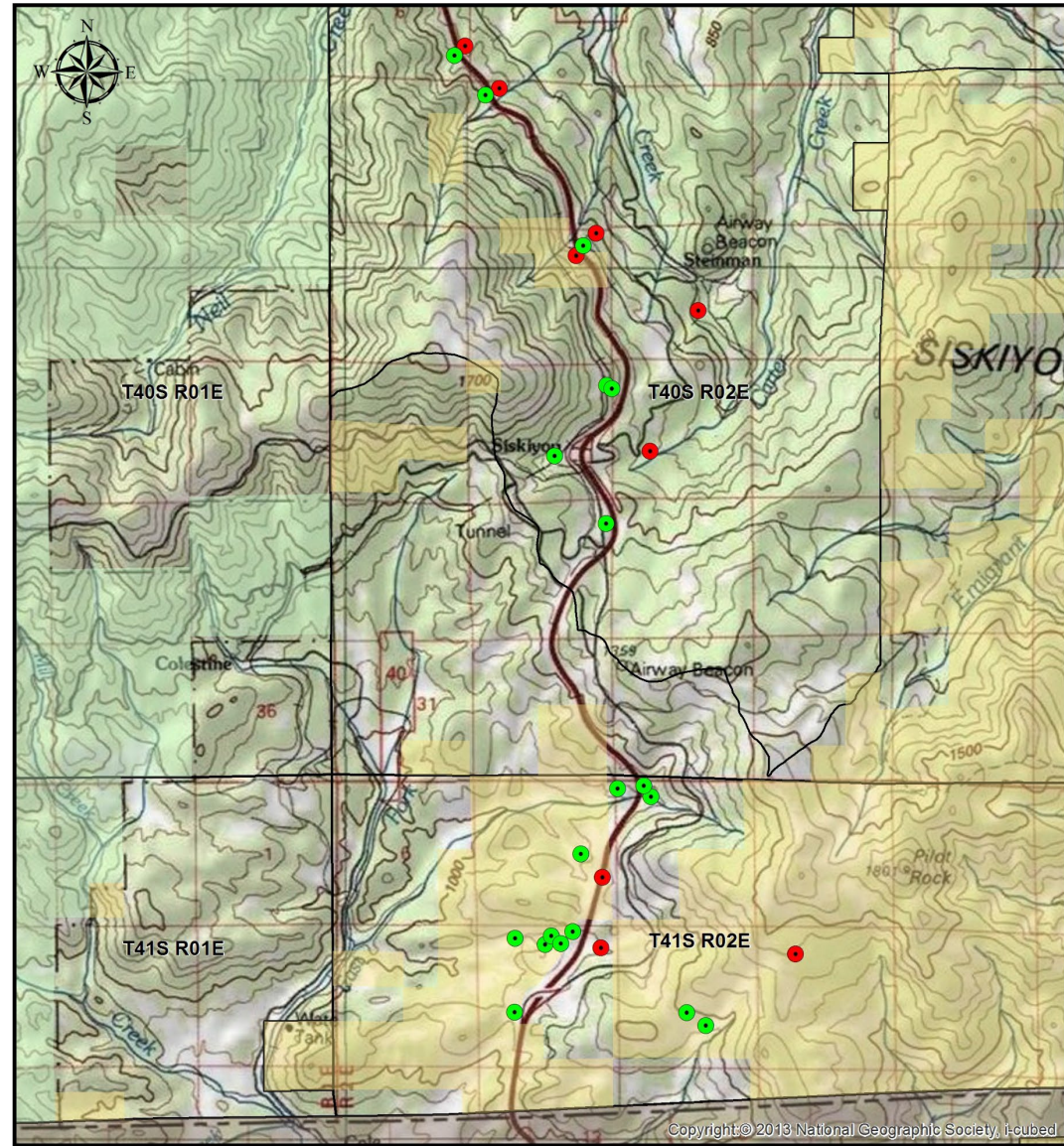
# WILDLIFE CORRIDOR CAMERA SITES

## Highway I-5 from Ashland, Oregon, to California Border

### Current Wildlife Use Monitoring

19 trail cameras

3 capstone student projects



Wildlife Camera Locations in Green  
Potential Camera Sites in Red

Charles Schelz / CSNM Ecologist

# Timeline

February 2021-January 2022	Organization and Fundraising
February 2022-December 2022	Feasibility/Alternatives Study
December 2022	Site(s) Selected
January 2023-December 2024	Engineering and Design (ODOT)
2024	Application for IJA Wildlife Crossing Grant Program
2025	Construction

# QUESTIONS?

**More info at [myowf.org/sowcc](https://myowf.org/sowcc)**