

I-205 Abernethy Bridge Project

ACEC/ODOT Partnering Conference – May 21, 2024



Overall Project Benefits

Building the first earthquake-ready interstate bridge across the Willamette River in the Portland area.



Earthquake-Ready Bridge

- The Abernethy Bridge will be the first earthquake-ready interstate bridge across the Willamette River in the Portland area.



Fewer Crashes

- Improved interchanges and on- and off-ramps will make travel safer, resulting in fewer crashes.

Project Overview



Right: New bridge columns emerging from the water near the work platform and construction barges.



Left: Aerial photo of the Abernethy Bridge from Oregon City looking south.

2022	2023				2024	2025
	Winter	Spring	Summer	Fall		
Abernethy Bridge CONSTRUCTION						

I-205 Abernethy Bridge Project Fun Facts



5,200 TONS OF REBAR
THE WEIGHT OF 35 BLUE WHALES

An icon showing a rectangular cage structure made of rebar, with a large whale swimming to its right.

32,400 CUBIC YARDS OF CONCRETE
ENOUGH TO FILL 10 OLYMPIC-SIZED POOLS

An icon of a concrete mixer truck on the left and a pool with a diving board on the right.

70 MILES OF WIRE TO REINFORCE THE SUPER BEAMS
THE LENGTH OF 41 GOLDEN GATE BRIDGES

An icon of a spool of wire on the left and a stylized bridge on the right.

221,000 LBS.
OSCAR THE OSCILLATOR
THE WEIGHT OF 17 ELEPHANTS AND THE FORCE OF 208 JET ENGINES

An icon of a crane on the left, an elephant in the middle, and a large wheel on the right.

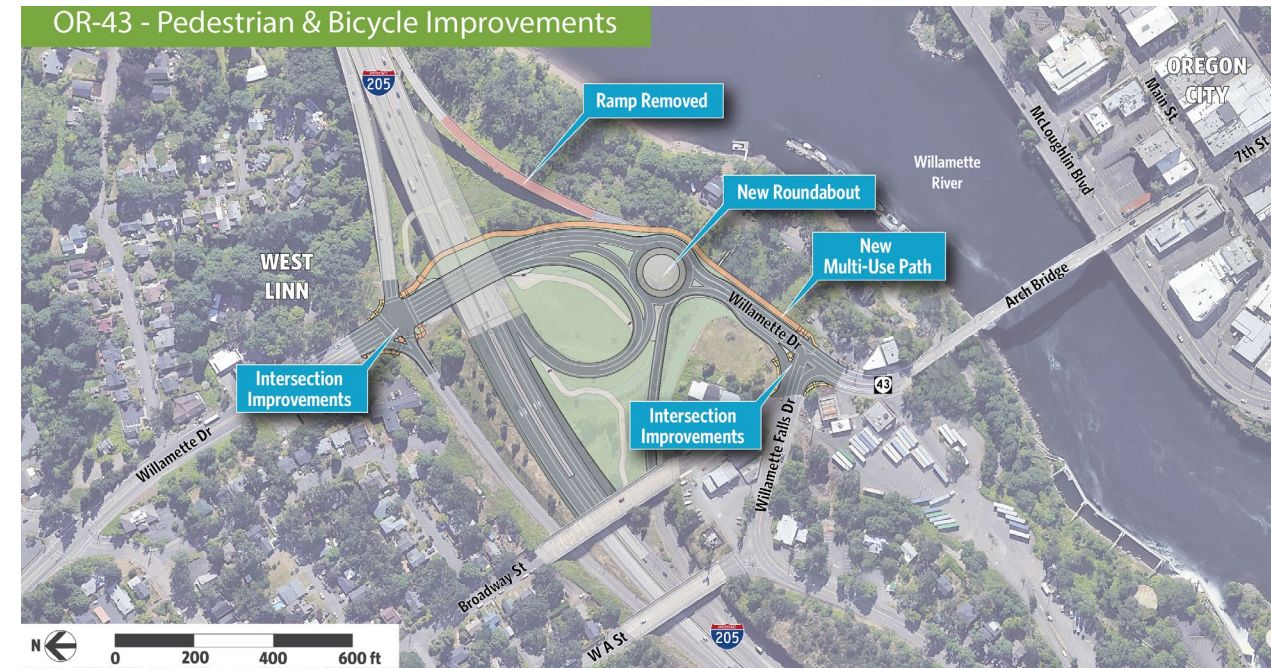
225 FEET DEPTH OF LARGEST SHAFT
THE HEIGHT OF 12 GIRAFFES STANDING ON TOP OF EACH OTHER

An icon of a single giraffe on the right and a group of 12 smaller giraffes on the left.

3,612 FEET COMBINED DEPTH OF ALL 28 SHAFTS
THE HEIGHT OF 2.5 EMPIRE STATE BUILDINGS

A large downward-pointing arrow on the left and a stylized building on the right.

West Linn Interchange Improvements



The new roundabout connecting OR 43 to northbound I-205 opened on schedule in August 2023, and is expected to practically eliminate head-on collisions in the area and reduce other collisions by 48%.

Oregon City Interchange Improvements

OR 99E on- and off-ramp reconfigurations (2023 - 2024)

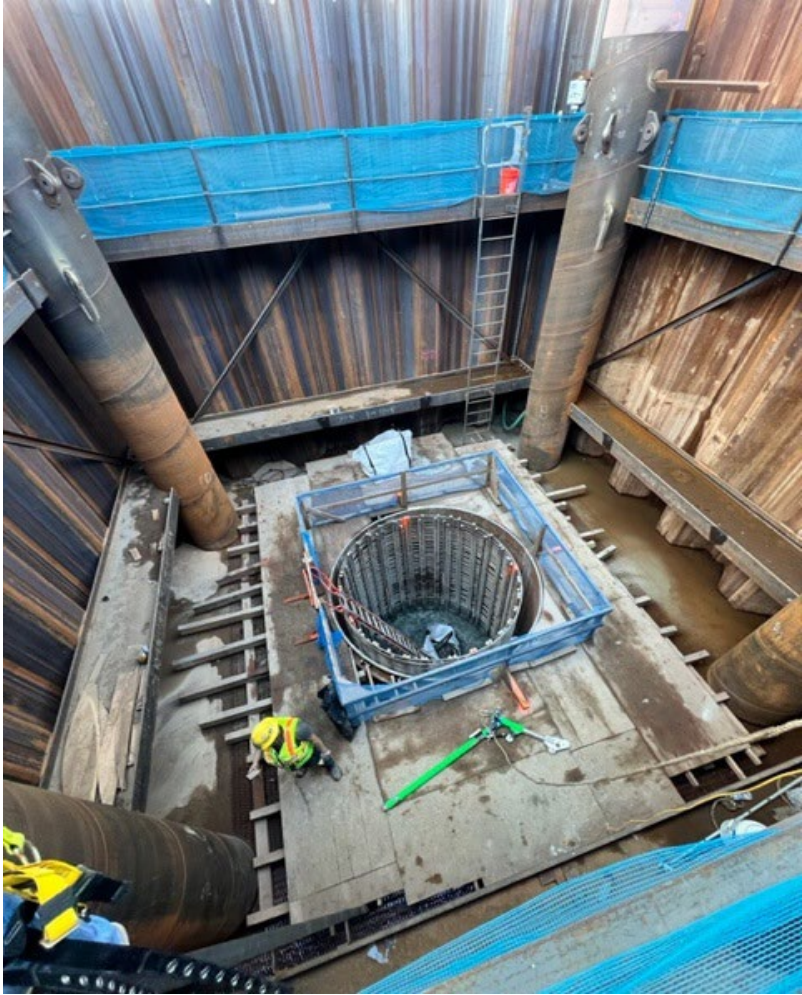


January 2024: Last In-Water Shaft Completed

- One direction of I-205 was closed over a weekend to accommodate a shaft concrete pour on Pier 4.
- The concrete was delivered to a pump truck on the deck of the bridge and tremied over the edge for delivery to the shaft below.

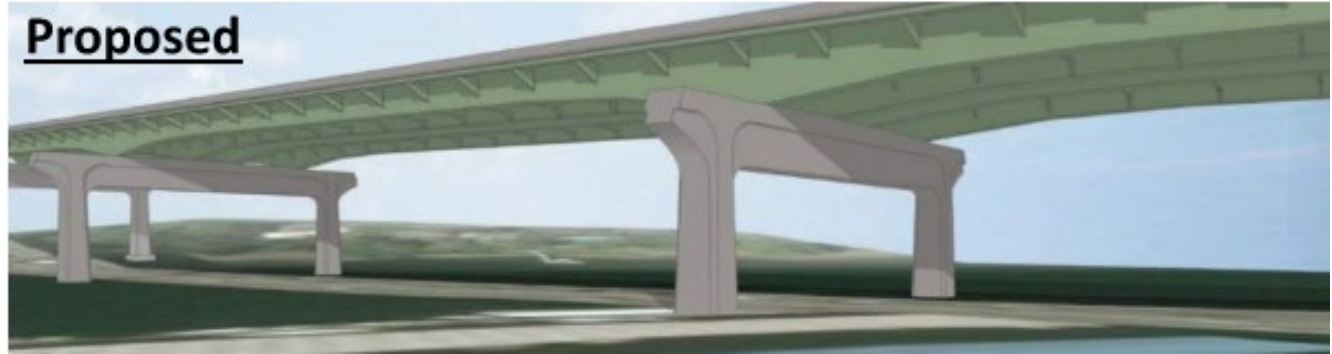
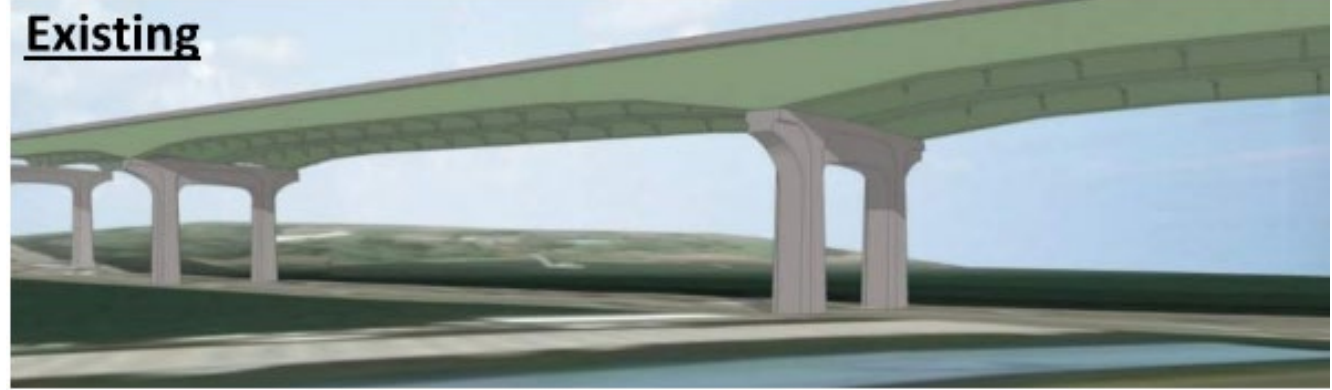
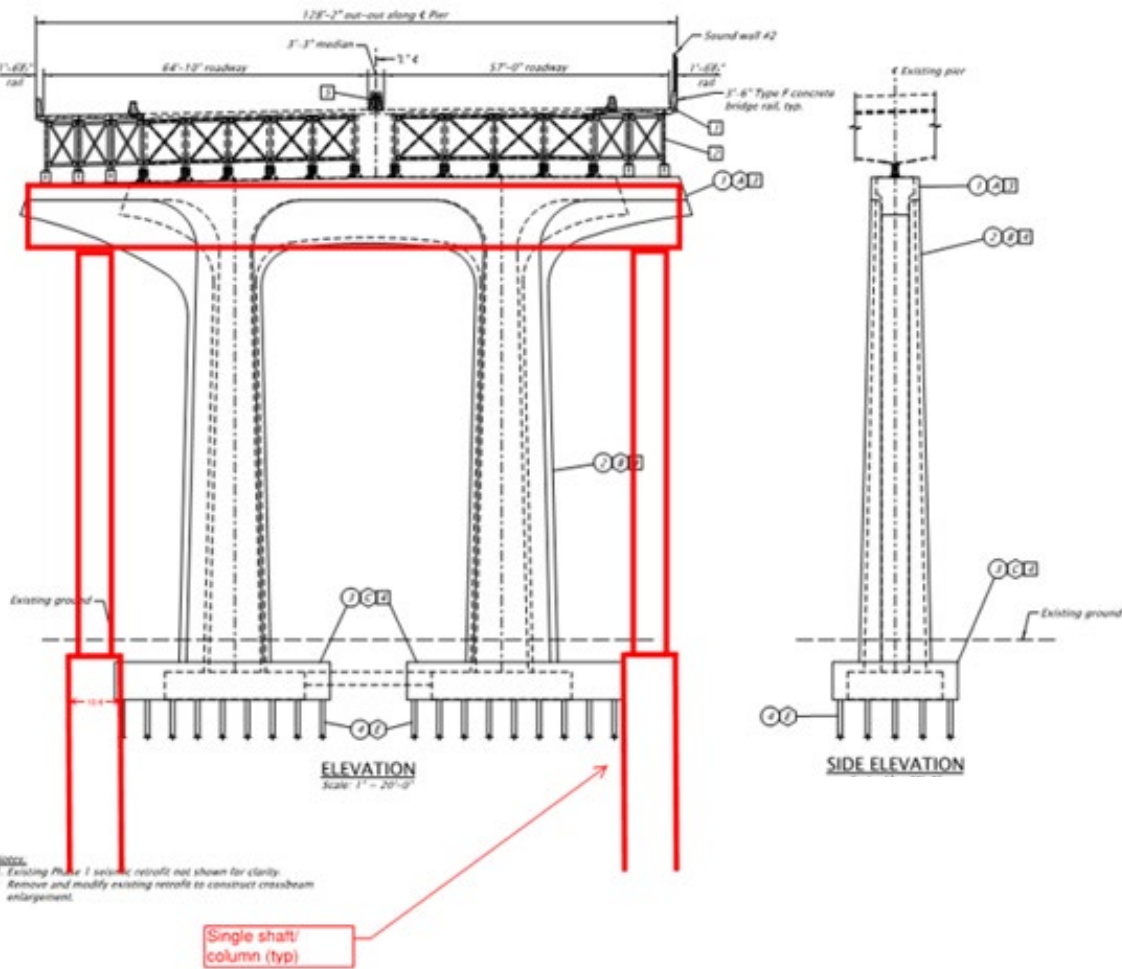


Recently Completed Activity - Drilling Shafts



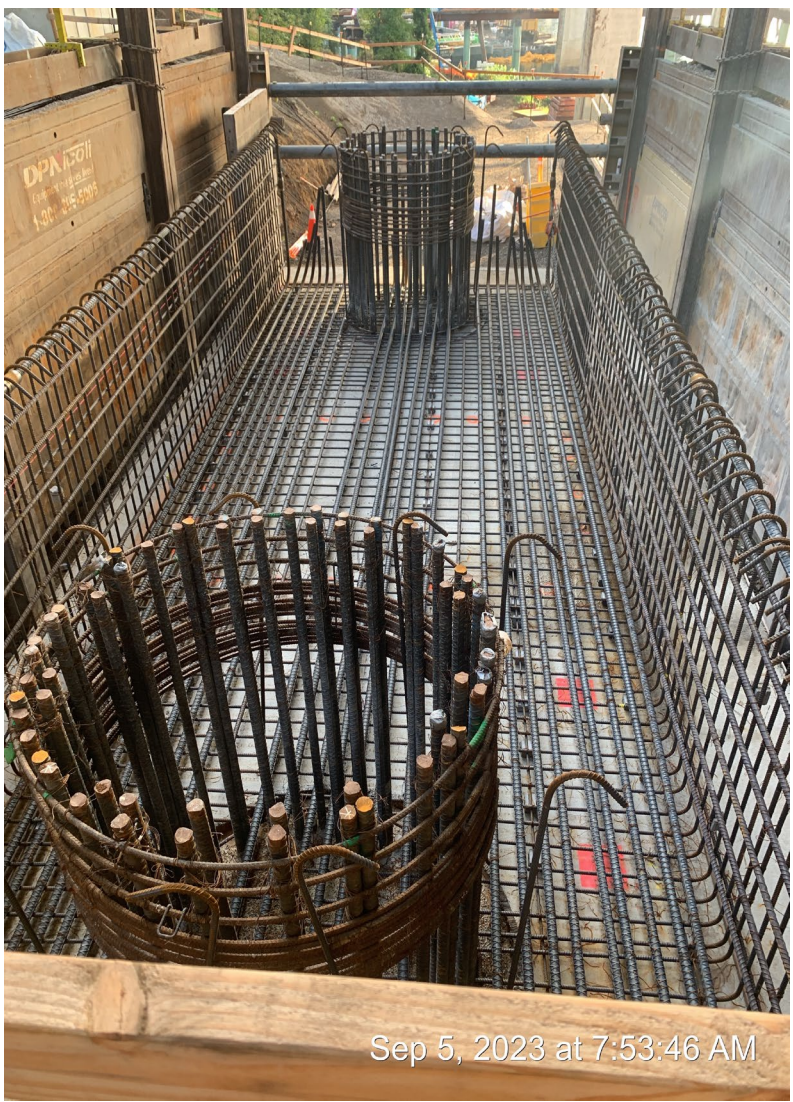
Abernethy Bridge Construction

Substructure Retrofit



- Outrigger bents at piers 3-6 in river.
- Additional outriggers at piers 2, 7 and 8.
- Other piers widened in kind with existing substructure.

Current Activities - Column Construction



2024 Look Ahead

- Preparing I-205 on either side of the Abernethy Bridge for the 2025 bridge slide.
- Widening and realigning the on- and off-ramps to OR 99E from I-205.
- Sound wall construction near southbound Exit 9 in Oregon City.
- Widening the I-205 bridge across Main Street in Oregon City.



Left: Aerial photo of the worksite in Oregon City next to OR 99E.

Right: Aerial photo of I-205 crossing Main Street in Oregon City.



Project Contractor & DBE Goals

Contractor:

- Awarded to Kiewit Infrastructure West
- Contract value: \$447M (~\$62.6M going to DBE)
 - 850,000 craft labor hours
 - 1.1M overall hours
 - 250 peak workforce craft plus 60 staff



DBE:

- TERO – (The Confederated Tribes of Grand Ronde) Goal: 5%, Actual: 6%
- DBE Construction Goal: 14%, Actual: 13%
- Apprenticeship/OJT - Goal: 20%, Actual: 22%
- Apprenticeship/Operators – Goal: 15%, Actual: 17%
- Aspirational Workforce Targets:
 - Minority: Goal: 20%, Actual: 27%
 - Female: Goal: 14%, Actual: 7%
- Zip Code Hiring – Goal: 8%, Actual: 16%

(Statistics accurate as of 4/22/2024)

Priority Zip Codes Workforce Development Pilot Program



Announced by Federal Highway Administration (FHWA) in June 2021.



Allows for a hiring preference and/or innovative contracting approach – **not gender or ethnicity-based.**



Helps increase the availability of workforce development opportunities for existing training and apprenticeship programs.



Operates under FHWA's Special Experimental Project Number 14 (SEP-14).

Targeted Zip Code Hiring Program

Specifications:

 Identified areas in Clackamas, Marion, Multnomah and Washington Counties.

 Economic and social indicators considered:



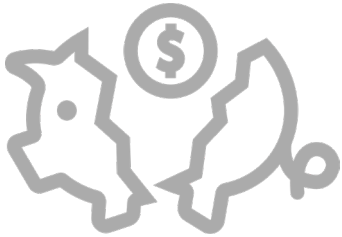
People living under **125%** of the federal poverty line



Homeownership rate and the last 12 months employment history



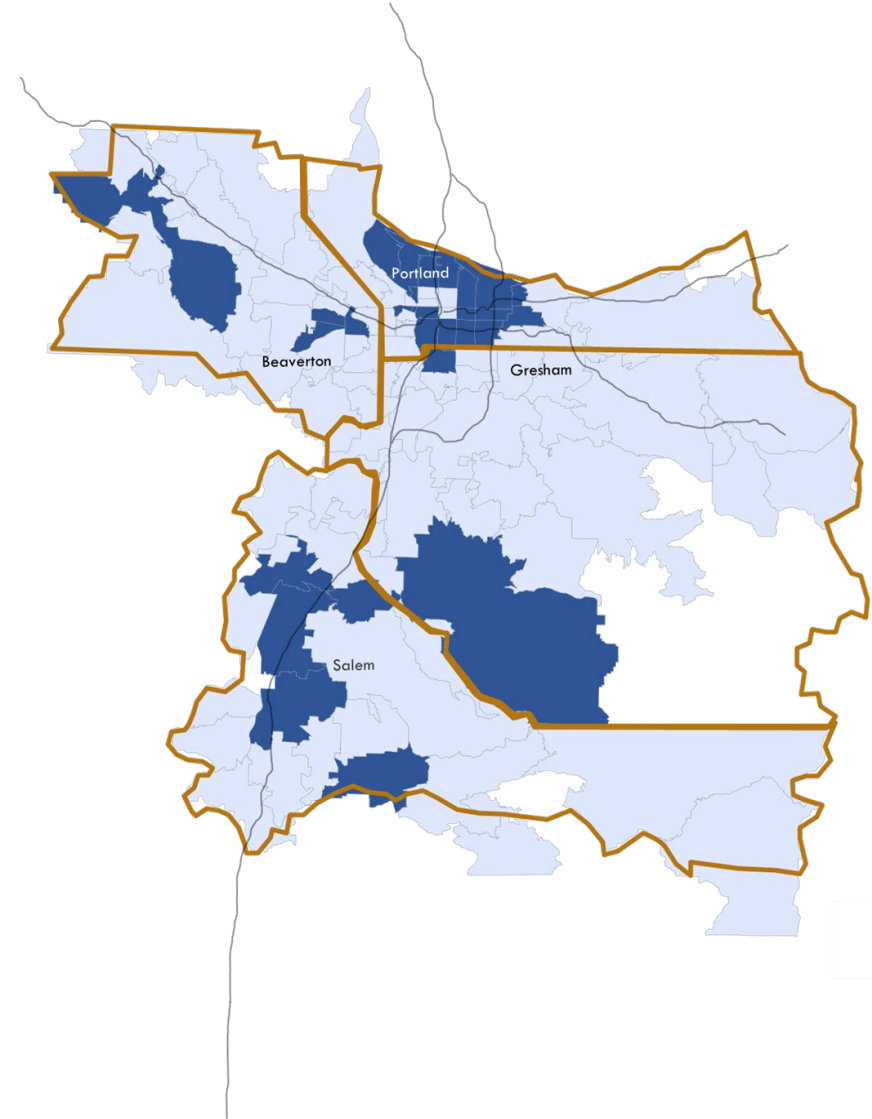
Education – less than high school



Workers 18-65 living in economically distressed areas

Priority Hiring Zip Codes

I-205 Abernethy Bridge Project Workforce Priority Hiring Zip Codes		
97003	97222	97204
97005	97227	97205
97024	97230	97206
97026	97233	97211
97030	97236	97214
97038	97266	97216
97078	97305	97217
97116	97317	97218
97202	97362	97220
97203	97383	



Percentage of apprentices living in regional counties who are anticipated to work on the project:

- Multnomah County: 69.8%
- Marion County: 29.4%
- Washington County: 23.4%
- Clackamas County: 18.5%

Monitoring and Evaluation



Monthly monitoring using current ODOT Office of Civil Rights tools.



Annual report to FHWA and stakeholders.

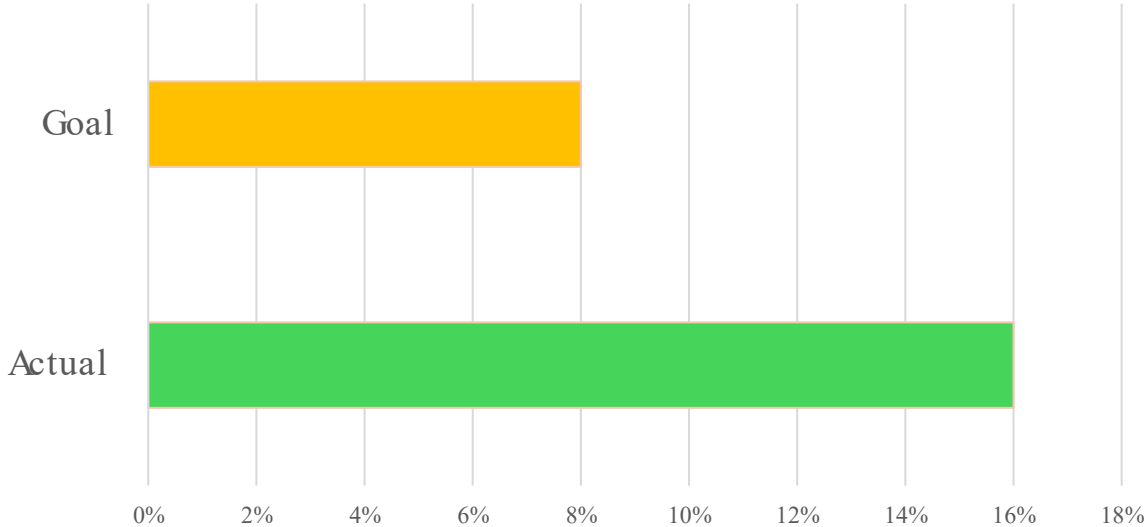


Final report, including:

- Contractor and community suggestions for improvements.
- Lessons learned.
- Recommendation(s) for further use of the program.
- Analysis whether there is a correlation between increased zip code hiring and the overall unemployment rate.
- Evaluation of potential increase in the pool of skilled labor.

Priority Zip Code Hiring Performance To Date

- Program goal = 8%; Actual = 16%
- +70% of contractors have trade employees from at least one priority zip code.
- All major trades have priority zip code program participants.
 - Journey Workers (74%)
 - Apprentices (26%)

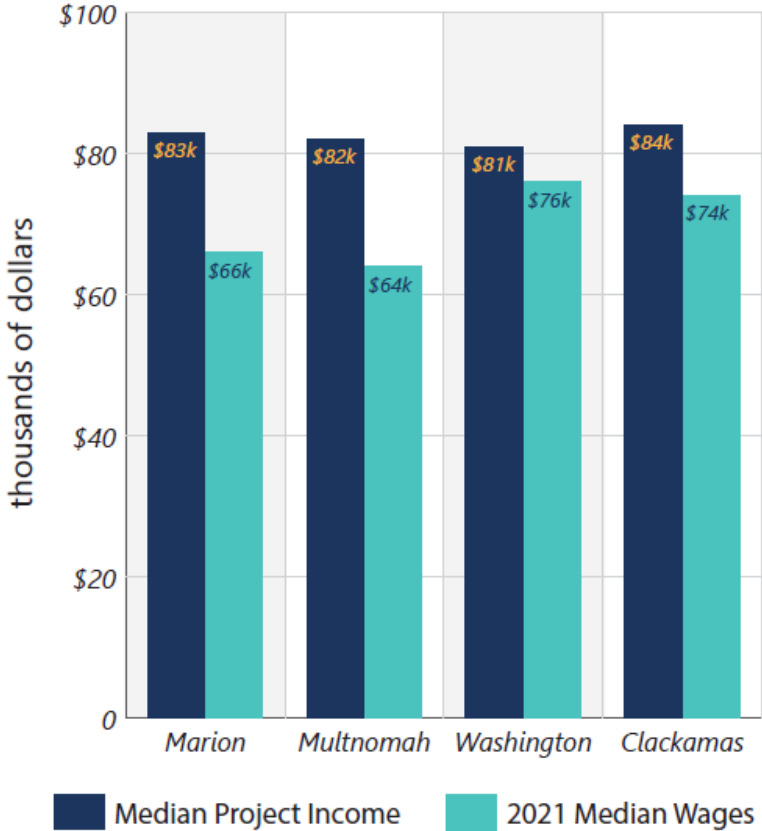


(Accurate as of 4/22/24)

Project Wages Compared to Local Median Wages

- The average base wage is \$89,000/yr. for journey workers and \$65,000/yr. for apprentices.
- The average wage for a project zip code journey single wage earner surpasses the 2021 average for construction workers in Oregon.

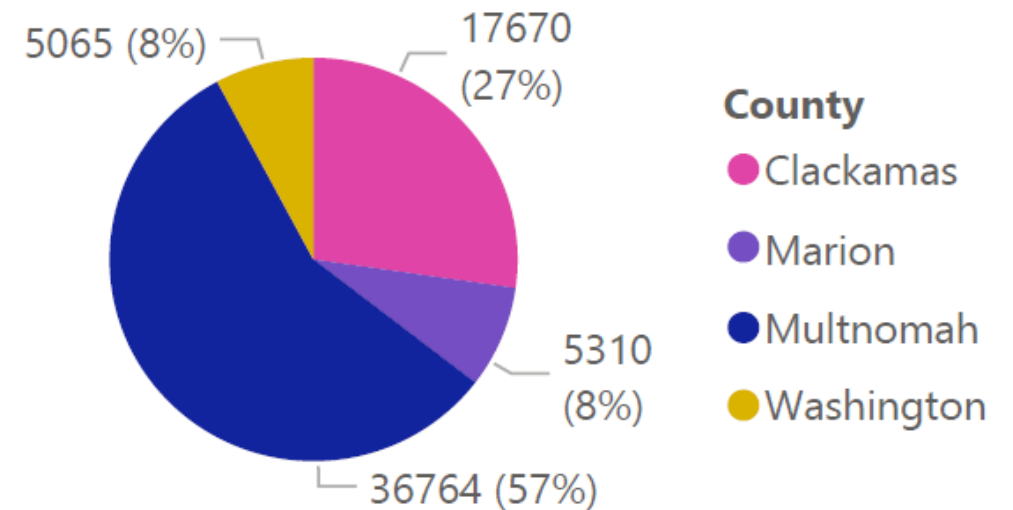
Median I-205 Project Incomes vs. 2021 Census Median Wages, by county



Dollars Into Distressed Zip Codes

- Since the project's start, a total of \$1,951,880 in compensation has been injected into economically distressed zip codes:
 - \$1,112,572 - Multnomah County
 - \$527,008 - Clackamas County
 - \$156,150 – Marion County
 - \$156,150 – Washington County

Priority Zip Code Hours by County

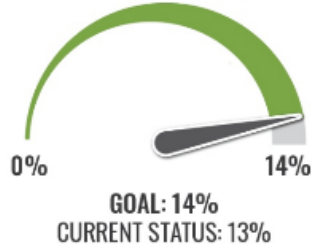


Priority Zip Code Hiring Program Conclusions

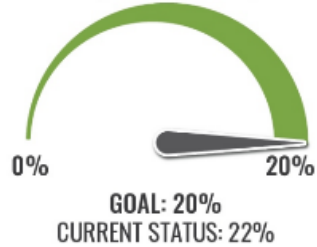
- Priority zip codes hiring works.
- Program has increased median wages in socially and economically distressed zip codes.
- Increased availability of skilled construction workers in low-income areas.
- Low-income communities are being lifted due to the targeted injection of money.
- FHWA ZIP Code Program is not a pilot now.

Project Website's Diversity Dashboard

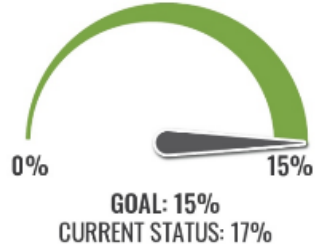
CONTRACT DOLLARS
Percent to Disadvantaged Business Enterprises (DBE)



WORKFORCE HOURS
Apprentice Non-Operating Engineers (Overall)



WORKFORCE HOURS
Apprentice Operating Engineers



WORKFORCE HOURS
Tribal Employment Rights Office (TERO) Referred



WORKFORCE HOURS
Local Preference Hiring



WORKFORCE HOURS
Women Workers



WORKFORCE HOURS
Minority Workers



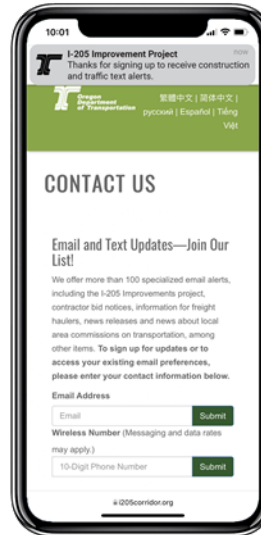
- *Green*: metric is currently at **70% or higher** of the project goal or aspirational target.
- *Yellow*: metric is currently at **50 to 69%** of the project goal or aspirational target.
- *Red*: metric is currently at **49% or less** of the project goal or aspirational target.

Click on the gauges to learn about actions we're taking to make progress for metrics currently below 70% of the project goal.



(Accurate as of 4/22/24)

Stay Connected!



 205improvements@odot.oregon.gov

 Project hotline: 503-731-8276

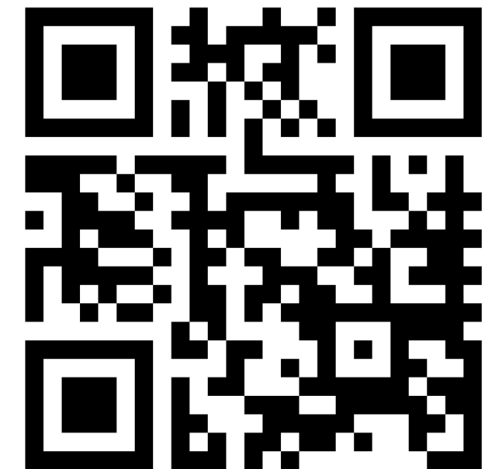
 i205Corridor.org

  [@OregonDOT](https://www.facebook.com/OregonDOT)



Nighttime noise hotline: 503-294-2125

 [@OregonDOT](https://twitter.com/OregonDOT)



Thank you!

André Baugh, Diversity Lead, Group ABG, Ltd.

Email: Andre@groupagb.com

Carolyn Heniges, PE – Urban Mobility Office Resident Engineer

Email: carolyn.HENIGES@odot.oregon.gov

Mandy Putney, Urban Mobility Strategic Initiatives Director

Email: mandy.putney@odot.oregon.gov