

Monthly Forecast Variance Report
January 2024

Monthly Forecast Variance Reports show the difference between the forecasted revenues and the actual revenues for highway fees. The Total Highway Fees include: Motor Fuels, Commerce and Compliance Fees, Driver and Motor Vehicle Highway Fees, as well as Vehicle Use Tax and Other Highway Revenues.

Summary

Total Highway Fees				
Month	Actual *	October 2023 Forecast	Over/Under Forecast	%
Jul-23	\$154,903,296	\$151,108,256	\$3,795,040	2.5%
Aug-23	\$154,879,344	\$158,878,000	-\$3,998,656	-2.5%
Sep-23	\$137,125,376	\$139,384,240	-\$2,258,864	-1.6%
Oct-23	\$152,852,128	\$148,434,160	\$4,417,968	3.0%
Nov-23	\$141,568,336	\$142,930,336	-\$1,362,000	-1.0%
Dec-23	-	\$149,547,840	-	-
Jan-24	-	\$135,642,848	-	-
Cumulative Over/Under Forecast			\$593,488	0.1%

Total Motor Fuels Fees				
Month	Actual	October 2023 Forecast	Over/Under Forecast	%
Aug-23	\$61,827,494	\$63,871,112	-\$2,043,618	-3.2%
Sep-23	\$56,560,679	\$59,374,372	-\$2,813,693	-4.7%
Oct-23	\$61,179,506	\$59,133,976	\$2,045,530	3.5%
Nov-23	\$52,669,191	\$54,519,524	-\$1,850,333	-3.4%
Dec-23	-	\$53,879,384	-	-
Jan-24	-	\$52,871,864	-	-
Feb-24	-	\$48,888,604	-	-
Cumulative Over/Under Forecast			-\$4,662,114	-2.0%

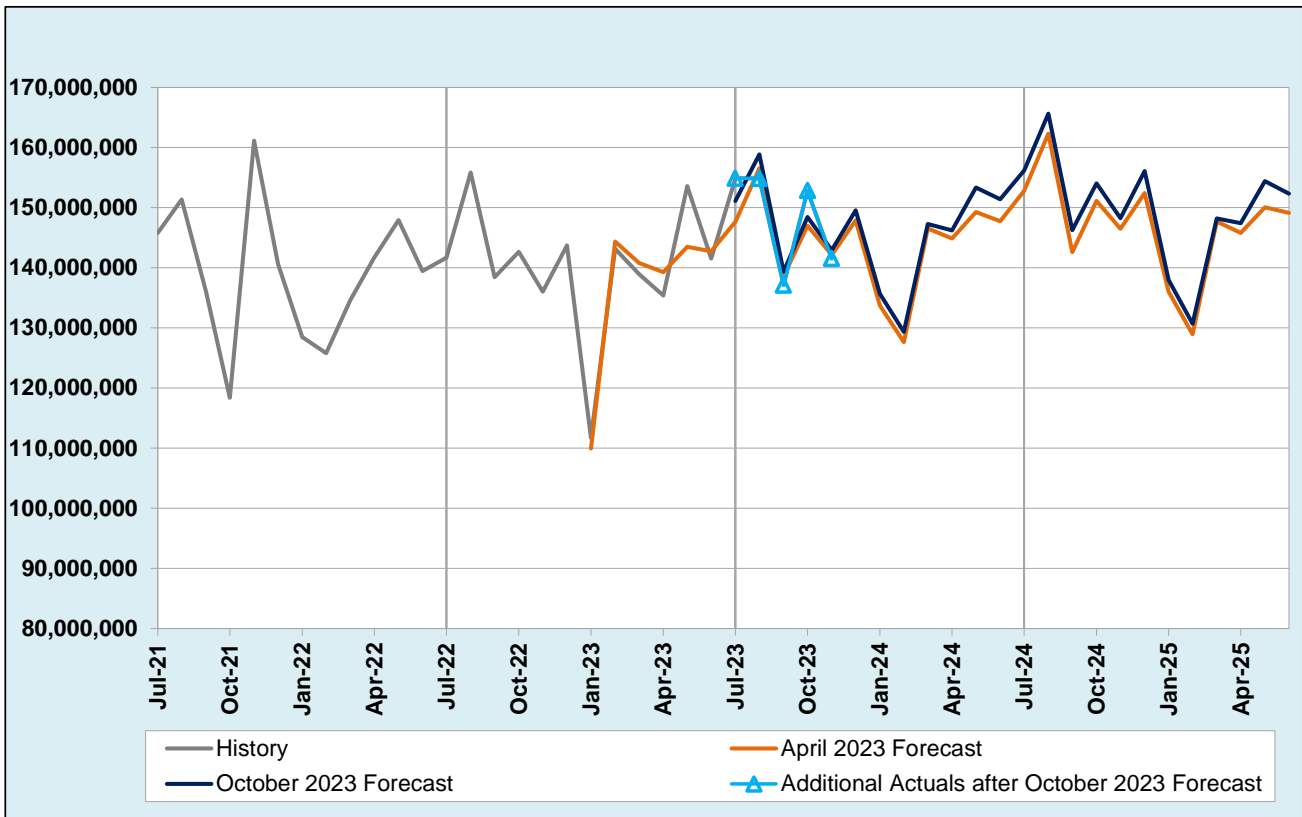
Total Commerce and Compliance (CCD) Fees				
Month	Actual	October 2023 Forecast	Over/Under Forecast	%
Jul-23	\$44,662,140	\$40,867,084	\$3,795,056	9.3%
Aug-23	\$43,023,808	\$44,978,840	-\$1,955,032	-4.3%
Sep-23	\$34,802,788	\$35,634,584	-\$831,796	-2.3%
Oct-23	\$46,864,252	\$43,591,312	\$3,272,940	7.5%
Nov-23	\$49,494,132	\$49,063,392	\$430,740	0.9%
Dec-23	-	\$50,953,168	-	-
Jan-24	-	\$39,975,072	-	-
Cumulative Over/Under Forecast			\$4,711,908	2.2%

Total Driver and Motor Vehicle (DMV) Highway Fees				
Month	Actual	October 2023 Forecast	Over/Under Forecast	%
Sep-23	\$40,712,432	\$39,325,804	\$1,386,628	3.5%
Oct-23	\$39,876,200	\$40,776,696	-\$900,496	-2.2%
Nov-23	\$34,803,532	\$34,745,944	\$57,588	0.2%
Dec-23	\$38,012,052	\$39,610,908	-\$1,598,856	-4.0%
Jan-24	-	\$38,243,320	-	-
Feb-24	-	\$36,280,544	-	-
Mar-24	-	\$45,169,592	-	-
Cumulative Over/Under Forecast			-\$1,055,136	-0.7%

* Total highway actuals are not final because of lags in getting the actuals in certain program areas. In the cases when actuals are lagging the forecasted revenues are used instead, for that reason historic actuals will be adjusted each month as data matures.

Total Highway Fees

Total Highway Fees include: Motor Fuels, Commerce and Compliance Fees, Driver and Motor Vehicle Highway Fees, as well as Vehicle Use Tax and Other Highway Revenues.

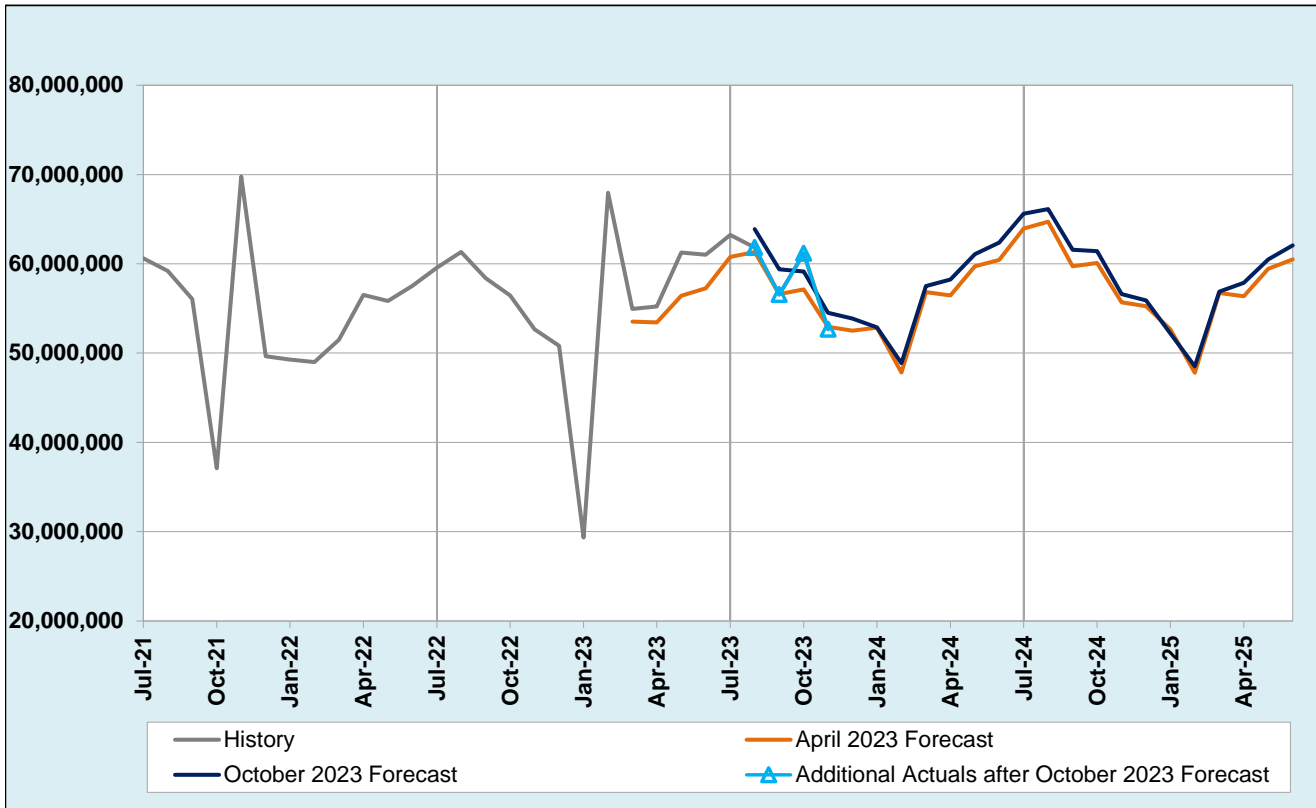


Month	Actual *	October 2023 Forecast	Over/Under Forecast (October 2023)		April 2023 Forecast	Over/Under Forecast (April 2023)	
Feb-23	\$143,180,800	-	-	-	\$144,360,944	-\$1,180,144	-0.8%
Mar-23	\$138,946,528	-	-	-	\$140,806,912	-\$1,860,384	-1.3%
Apr-23	\$135,404,080	-	-	-	\$139,282,864	-\$3,878,784	-2.8%
May-23	\$153,607,904	-	-	-	\$143,511,712	\$10,096,192	7.0%
Jun-23	\$141,542,864	-	-	-	\$142,742,624	-\$1,199,760	-0.8%
Jul-23	\$154,903,296	\$151,108,256	\$3,795,040	2.5%	\$147,645,040	\$7,258,256	4.9%
Aug-23	\$154,879,344	\$158,878,000	-\$3,998,656	-2.5%	\$156,559,792	-\$1,680,448	-1.1%
Sep-23	\$137,125,376	\$139,384,240	-\$2,258,864	-1.6%	\$138,573,216	-\$1,447,840	-1.0%
Oct-23	\$152,852,128	\$148,434,160	\$4,417,968	3.0%	\$147,032,096	\$5,820,032	4.0%
Nov-23	\$141,568,336	\$142,930,336	-\$1,362,000	-1.0%	\$142,162,192	-\$593,856	-0.4%
Dec-23	-	\$149,547,840	-	-	\$147,887,968	-	-
Jan-24	-	\$135,642,848	-	-	\$133,699,624	-	-
Feb-24	-	\$129,351,104	-	-	\$127,643,104	-	-
Mar-24	-	\$147,300,000	-	-	\$146,556,672	-	-
Cumulative Over/Under Forecast			\$593,488	0.1%		\$11,333,264	0.8%

* Total highway actuals are not final because of lags in getting the actuals in certain program areas. In the cases when actuals are lagging the forecasted revenues are used instead, for that reason historic actuals will be adjusted each month as data

Total Motor Fuels Fees

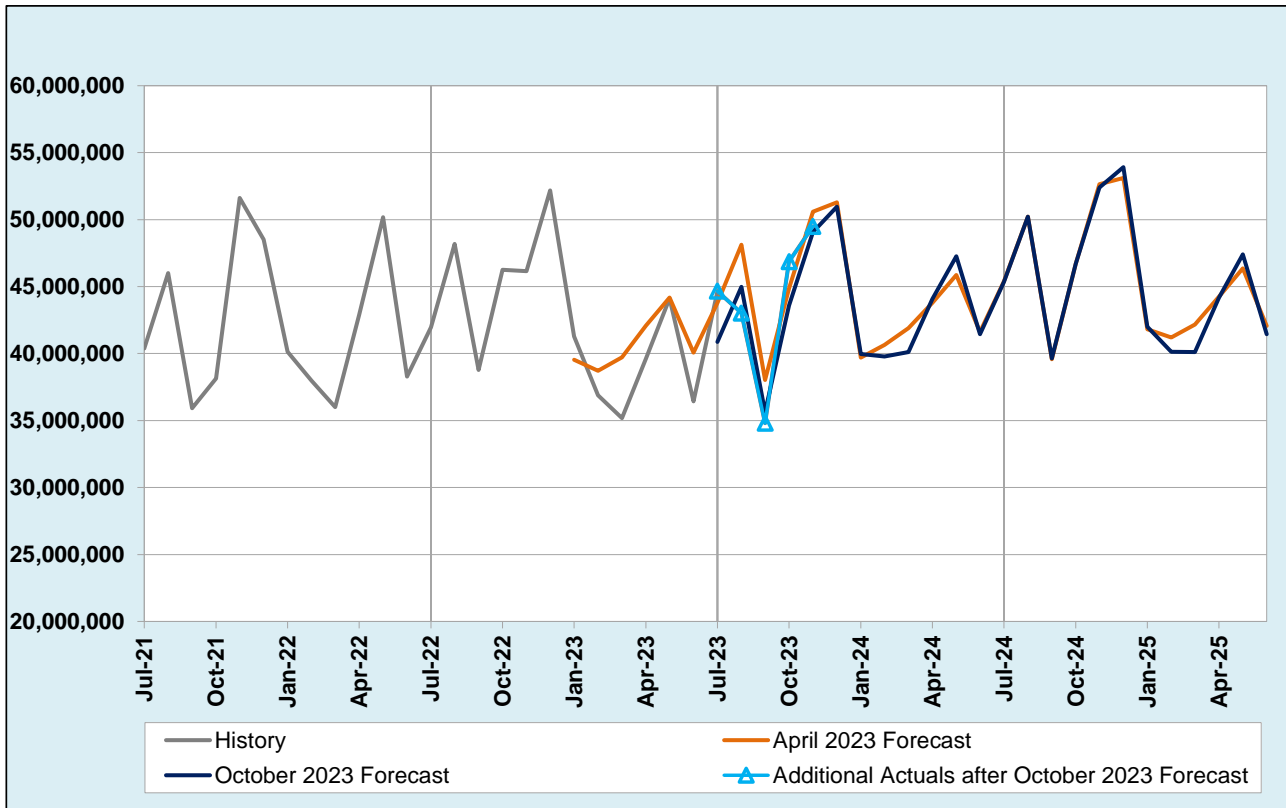
Motor Fuels includes revenues collected on taxable fuel sells including gasoline and diesel. Current rate is \$0.40 per gallon.



Month	Actual	October 2023 Forecast	Over/Under Forecast (October 2023)		April 2023 Forecast	Over/Under Forecast (April 2023)	
Mar-23	\$54,957,581	-	-	-	\$53,525,472	\$1,432,109	2.7%
Apr-23	\$55,210,607	-	-	-	\$53,438,108	\$1,772,499	3.3%
May-23	\$61,271,442	-	-	-	\$56,425,256	\$4,846,186	8.6%
Jun-23	\$61,007,736	-	-	-	\$57,259,432	\$3,748,304	6.5%
Jul-23	\$63,250,553	-	-	-	\$60,760,564	\$2,489,989	4.1%
Aug-23	\$61,827,494	\$63,871,112	-\$2,043,618	-3.2%	\$61,331,088	\$496,406	0.8%
Sep-23	\$56,560,679	\$59,374,372	-\$2,813,693	-4.7%	\$56,624,488	-\$63,809	-0.1%
Oct-23	\$61,179,506	\$59,133,976	\$2,045,530	3.5%	\$57,143,436	\$4,036,070	7.1%
Nov-23	\$52,669,191	\$54,519,524	-\$1,850,333	-3.4%	\$52,953,416	-\$284,225	-0.5%
Dec-23	-	\$53,879,384	-	-	\$52,509,872	-	-
Jan-24	-	\$52,871,864	-	-	\$52,852,584	-	-
Feb-24	-	\$48,888,604	-	-	\$47,839,908	-	-
Mar-24	-	\$57,510,284	-	-	\$56,838,864	-	-
Apr-24	-	\$58,247,572	-	-	\$56,442,464	-	-
Cumulative Over/Under Forecast			-\$4,662,114	-2.0%		\$18,473,528	3.5%

Total Commerce and Compliance (CCD) Fees

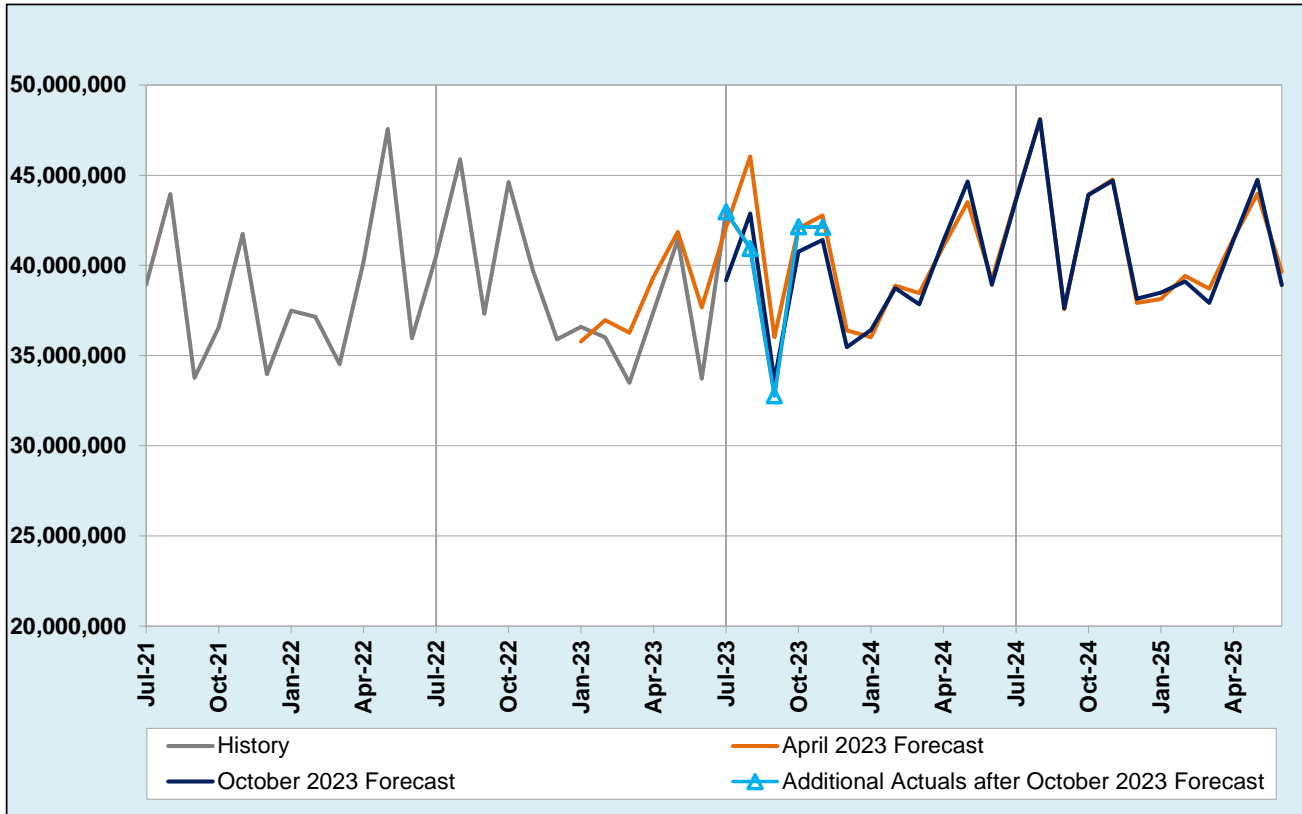
Commerce and Compliance fees include weight-mile revenues and registration fees for heavy-duty commercial vehicles.



Month	Actual	October 2023 Forecast	Over/Under Forecast (October 2023)		April 2023 Forecast	Over/Under Forecast (April 2023)	
Feb-23	\$36,889,260	-	-	-	\$38,721,680	-\$1,832,420	-4.7%
Mar-23	\$35,184,192	-	-	-	\$39,724,016	-\$4,539,824	-11.4%
Apr-23	\$39,609,480	-	-	-	\$42,077,564	-\$2,468,084	-5.9%
May-23	\$44,128,212	-	-	-	\$44,174,908	-\$46,696	-0.1%
Jun-23	\$36,438,784	-	-	-	\$40,061,652	-\$3,622,868	-9.0%
Jul-23	\$44,662,140	\$40,867,084	\$3,795,056	9.3%	\$43,796,256	\$865,884	2.0%
Aug-23	\$43,023,808	\$44,978,840	-\$1,955,032	-4.3%	\$48,122,924	-\$5,099,116	-10.6%
Sep-23	\$34,802,788	\$35,634,584	-\$831,796	-2.3%	\$38,028,444	-\$3,225,656	-8.5%
Oct-23	\$46,864,252	\$43,591,312	\$3,272,940	7.5%	\$44,862,832	\$2,001,420	4.5%
Nov-23	\$49,494,132	\$49,063,392	\$430,740	0.9%	\$50,592,172	-\$1,098,040	-2.2%
Dec-23	-	\$50,953,168	-	-	\$51,297,256	-	-
Jan-24	-	\$39,975,072	-	-	\$39,697,472	-	-
Feb-24	-	\$39,792,740	-	-	\$40,645,512	-	-
Mar-24	-	\$40,118,204	-	-	\$41,895,332	-	-
Cumulative Over/Under Forecast			\$4,711,908	2.2%		-\$19,065,400	-4.6%

CCD Weight Mile Tax Revenue (Highway Use)

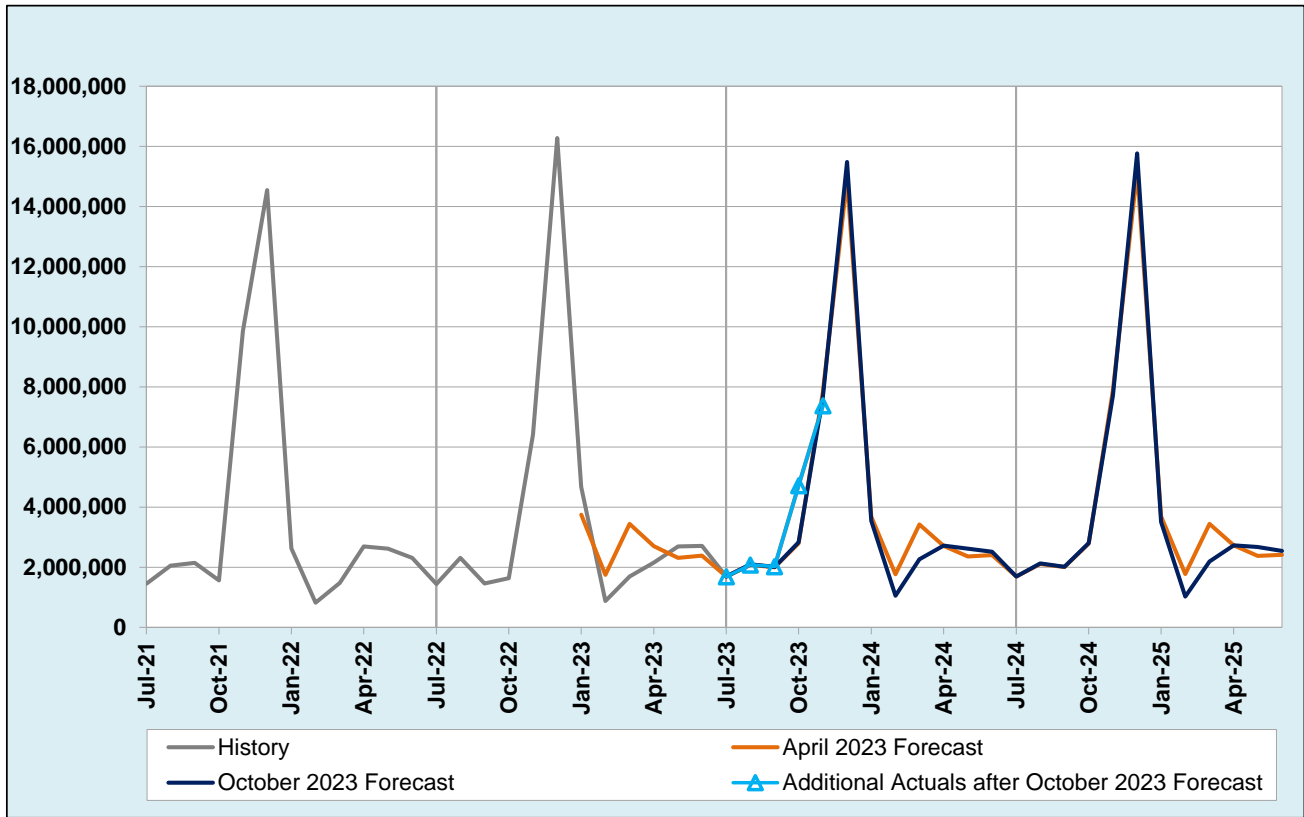
The weight-mile tax is the largest source of trucking-related revenue at just under 90 percent of total revenue collected by CCD. This highway use tax applies to trucks with a gross weight over 26,000 pounds. The tax paid by a motor carrier varies with the weight of the vehicle, the number of miles traveled, and the axle configuration.



Month	Actual	October 2023 Forecast	Over/Under Forecast (October 2023)		April 2023 Forecast	Over/Under Forecast (April 2023)	
Feb-23	\$36,009,689	-	-	-	\$36,972,556	-\$962,867	-2.6%
Mar-23	\$33,492,340	-	-	-	\$36,279,124	-\$2,786,784	-7.7%
Apr-23	\$37,457,866	-	-	-	\$39,374,064	-\$1,916,198	-4.9%
May-23	\$41,434,737	-	-	-	\$41,863,780	-\$429,043	-1.0%
Jun-23	\$33,726,537	-	-	-	\$37,678,140	-\$3,951,603	-10.5%
Jul-23	\$42,975,399	\$39,179,176	\$3,796,223	9.7%	\$42,102,708	\$872,691	2.1%
Aug-23	\$40,948,079	\$42,881,548	-\$1,933,469	-4.5%	\$46,044,856	-\$5,096,777	-11.1%
Sep-23	\$32,779,952	\$33,628,572	-\$848,620	-2.5%	\$36,031,816	-\$3,251,864	-9.0%
Oct-23	\$42,145,927	\$40,764,840	\$1,381,087	3.4%	\$42,065,956	\$79,971	0.2%
Nov-23	\$42,119,900	\$41,408,024	\$711,876	1.7%	\$42,767,368	-\$647,468	-1.5%
Dec-23	-	\$35,471,524	-	-	\$36,388,508	-	-
Jan-24	-	\$36,427,752	-	-	\$36,017,216	-	-
Feb-24	-	\$38,740,872	-	-	\$38,884,768	-	-
Mar-24	-	\$37,848,404	-	-	\$38,470,476	-	-
Cumulative Over/Under Forecast			\$3,107,097	1.5%		-\$18,089,943	-4.7%

CCD Registration Fee

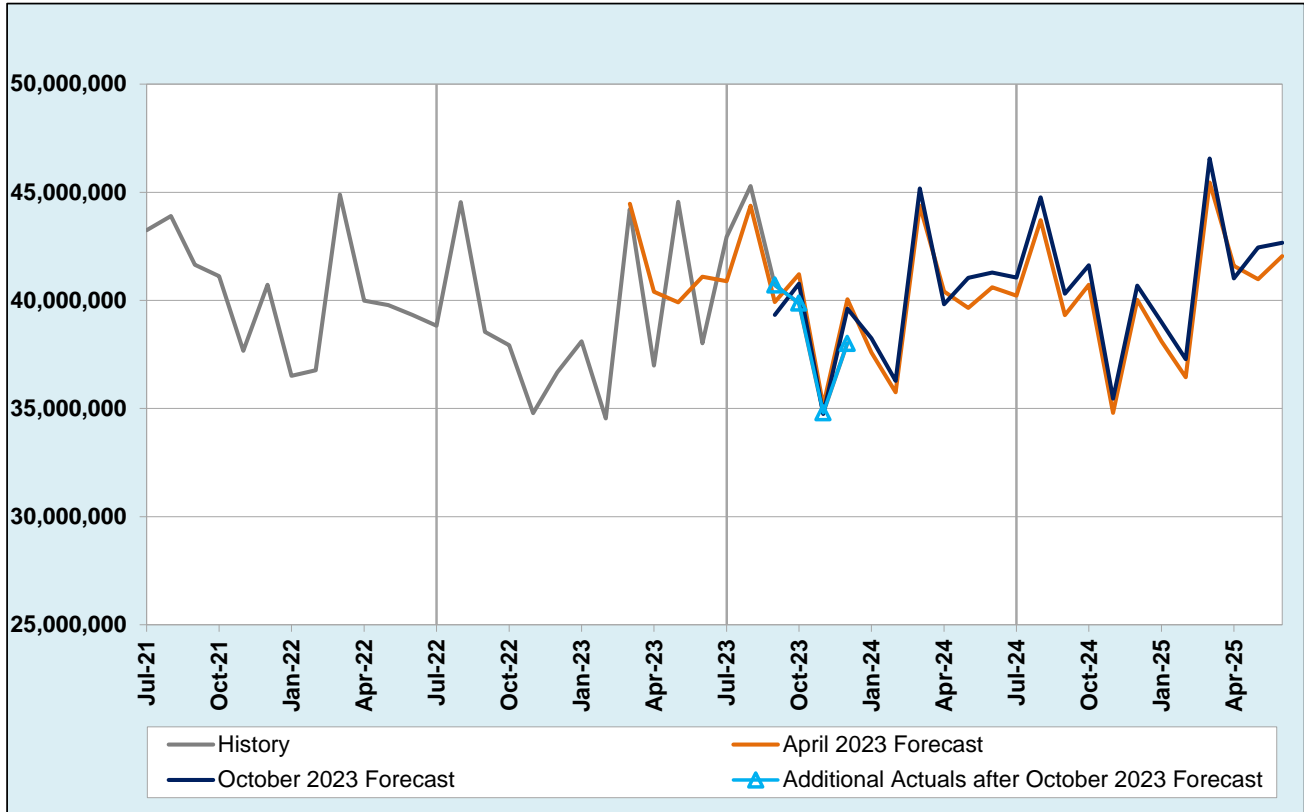
Heavy trucks pay annual registration fees and other trip based fees that are included here.



Month	Actual	October 2023 Forecast	Over/Under Forecast (October 2023)		April 2023 Forecast	Over/Under Forecast (April 2023)	
Feb-23	\$879,571	-	-	-	\$1,749,124	-\$869,553	-49.7%
Mar-23	\$1,691,851	-	-	-	\$3,444,892	-\$1,753,041	-50.9%
Apr-23	\$2,151,616	-	-	-	\$2,703,499	-\$551,884	-20.4%
May-23	\$2,693,477	-	-	-	\$2,311,128	\$382,350	16.5%
Jun-23	\$2,712,248	-	-	-	\$2,383,511	\$328,736	13.8%
Jul-23	\$1,686,740	\$1,687,908	-\$1,169	-0.1%	\$1,693,547	-\$6,807	-0.4%
Aug-23	\$2,075,728	\$2,097,291	-\$21,564	-1.0%	\$2,078,067	-\$2,339	-0.1%
Sep-23	\$2,022,835	\$2,006,010	\$16,825	0.8%	\$1,996,628	\$26,207	1.3%
Oct-23	\$4,718,327	\$2,826,473	\$1,891,853	66.9%	\$2,796,876	\$1,921,450	68.7%
Nov-23	\$7,374,234	\$7,655,369	-\$281,135	-3.7%	\$7,824,805	-\$450,572	-5.8%
Dec-23	-	\$15,481,645	-	-	\$14,908,750	-	-
Jan-24	-	\$3,547,322	-	-	\$3,680,258	-	-
Feb-24	-	\$1,051,868	-	-	\$1,760,746	-	-
Mar-24	-	\$2,269,801	-	-	\$3,424,856	-	-
Cumulative Over/Under Forecast			\$1,604,811	9.0%		-\$975,453	-3.5%

Total Driver and Motor Vehicle (DMV) Highway Fees

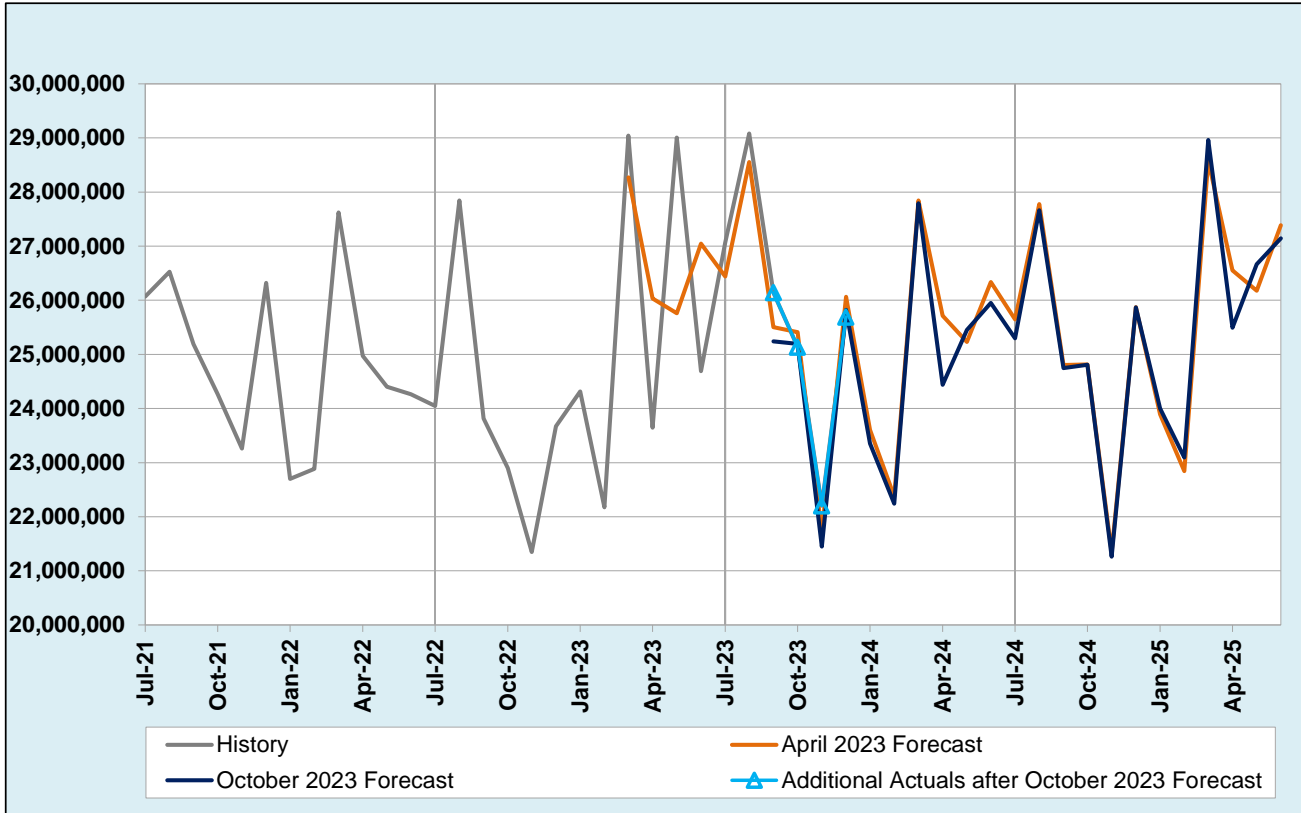
The Vehicle program area contains the transactions related to legal ownership and operation of a vehicle, including titling, plates, registrations, and permits. The Driver program contains the transactions related to the legal right to operate a vehicle, including permits, licenses, endorsements, and the associated tests to obtain these rights to drive.



Month	Actual	October 2023 Forecast	Over/Under Forecast (October 2023)		April 2023 Forecast	Over/Under Forecast (April 2023)	
Apr-23	\$36,991,216	-	-	-	\$40,396,868	-\$3,405,652	-8.4%
May-23	\$44,555,604	-	-	-	\$39,904,920	\$4,650,684	11.7%
Jun-23	\$38,019,280	-	-	-	\$41,095,932	-\$3,076,652	-7.5%
Jul-23	\$42,936,780	-	-	-	\$40,894,024	\$2,042,756	5.0%
Aug-23	\$45,286,120	-	-	-	\$44,379,312	\$906,808	2.0%
Sep-23	\$40,712,432	\$39,325,804	\$1,386,628	3.5%	\$39,922,812	\$789,620	2.0%
Oct-23	\$39,876,200	\$40,776,696	-\$900,496	-2.2%	\$41,211,476	-\$1,335,276	-3.2%
Nov-23	\$34,803,532	\$34,745,944	\$57,588	0.2%	\$35,129,740	-\$326,208	-0.9%
Dec-23	\$38,012,052	\$39,610,908	-\$1,598,856	-4.0%	\$40,048,844	-\$2,036,792	-5.1%
Jan-24	-	\$38,243,320	-	-	\$37,597,360	-	-
Feb-24	-	\$36,280,544	-	-	\$35,750,716	-	-
Mar-24	-	\$45,169,592	-	-	\$44,377,868	-	-
Apr-24	-	\$39,813,336	-	-	\$40,413,428	-	-
May-24	-	\$41,041,316	-	-	\$39,649,936	-	-
Cumulative Over/Under Forecast			-\$1,055,136	-0.7%		-\$1,790,712	-0.5%

DMV - Vehicle Registration Fees

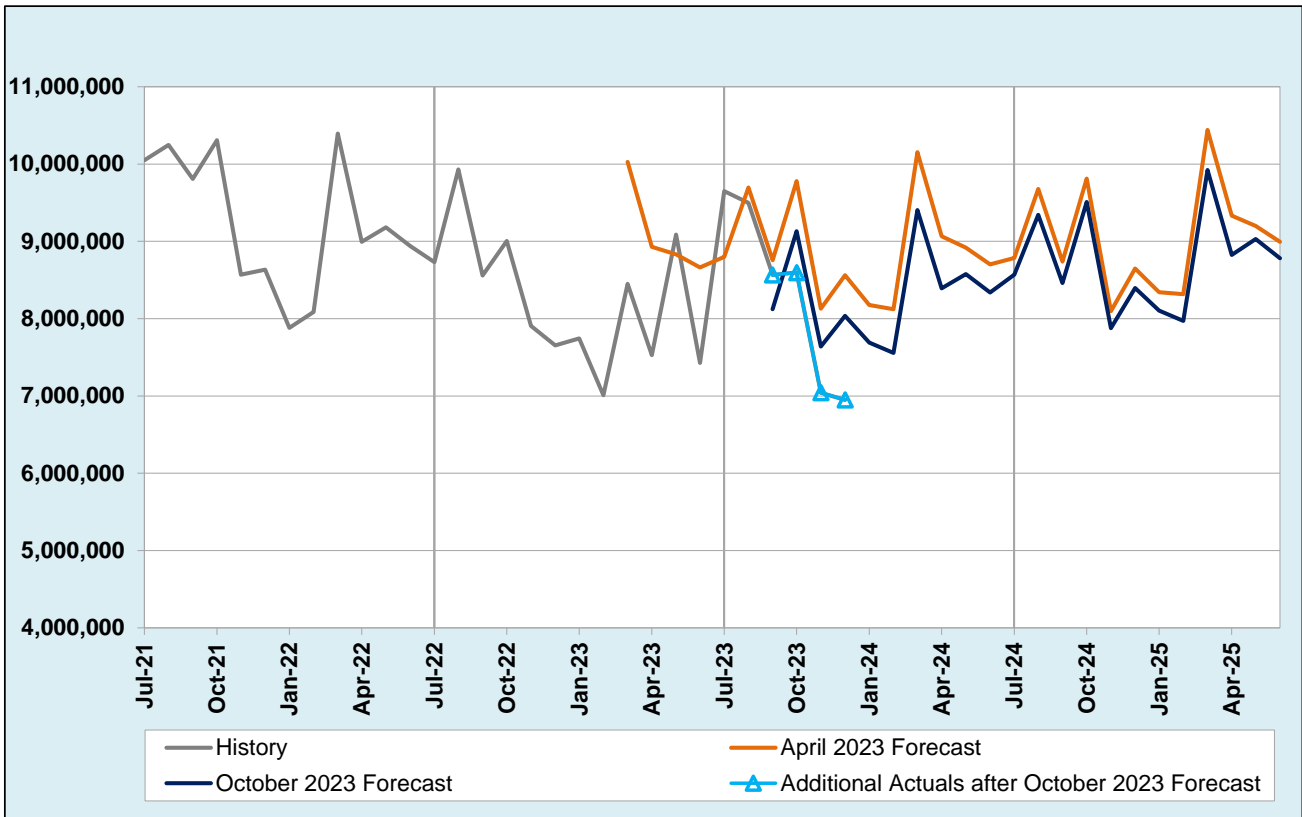
This includes: light duty vehicle registrations such as passenger vehicles and motorcycles/mopeds as well as medium-heavy duty vehicle registrations that are not subject to weight-mile taxation (farm trucks, buses, motor homes, trailers, campers, etc.)



Month	Actual	October 2023 Forecast	Over/Under Forecast (October 2023)		April 2023 Forecast	Over/Under Forecast (April 2023)	
Apr-23	\$23,645,277	-	-	-	\$26,033,112	-\$2,387,835	-9.2%
May-23	\$29,008,759	-	-	-	\$25,762,342	\$3,246,417	12.6%
Jun-23	\$24,691,517	-	-	-	\$27,048,044	-\$2,356,527	-8.7%
Jul-23	\$27,065,178	-	-	-	\$26,441,160	\$624,018	2.4%
Aug-23	\$29,082,098	-	-	-	\$28,554,244	\$527,854	1.8%
Sep-23	\$26,141,521	\$25,238,688	\$902,833	3.6%	\$25,501,536	\$639,985	2.5%
Oct-23	\$25,135,569	\$25,194,494	-\$58,926	-0.2%	\$25,410,096	-\$274,528	-1.1%
Nov-23	\$22,203,902	\$21,450,424	\$753,478	3.5%	\$21,710,626	\$493,276	2.3%
Dec-23	\$25,692,947	\$25,820,078	-\$127,131	-0.5%	\$26,063,542	-\$370,595	-1.4%
Jan-24	-	\$23,351,072	-	-	\$23,606,500	-	-
Feb-24	-	\$22,241,818	-	-	\$22,373,562	-	-
Mar-24	-	\$27,794,098	-	-	\$27,843,728	-	-
Apr-24	-	\$24,440,572	-	-	\$25,714,992	-	-
May-24	-	\$25,451,894	-	-	\$25,228,470	-	-
Cumulative Over/Under Forecast			\$1,470,254	1.5%		\$142,064	0.1%

DMV - Vehicle Title Fees

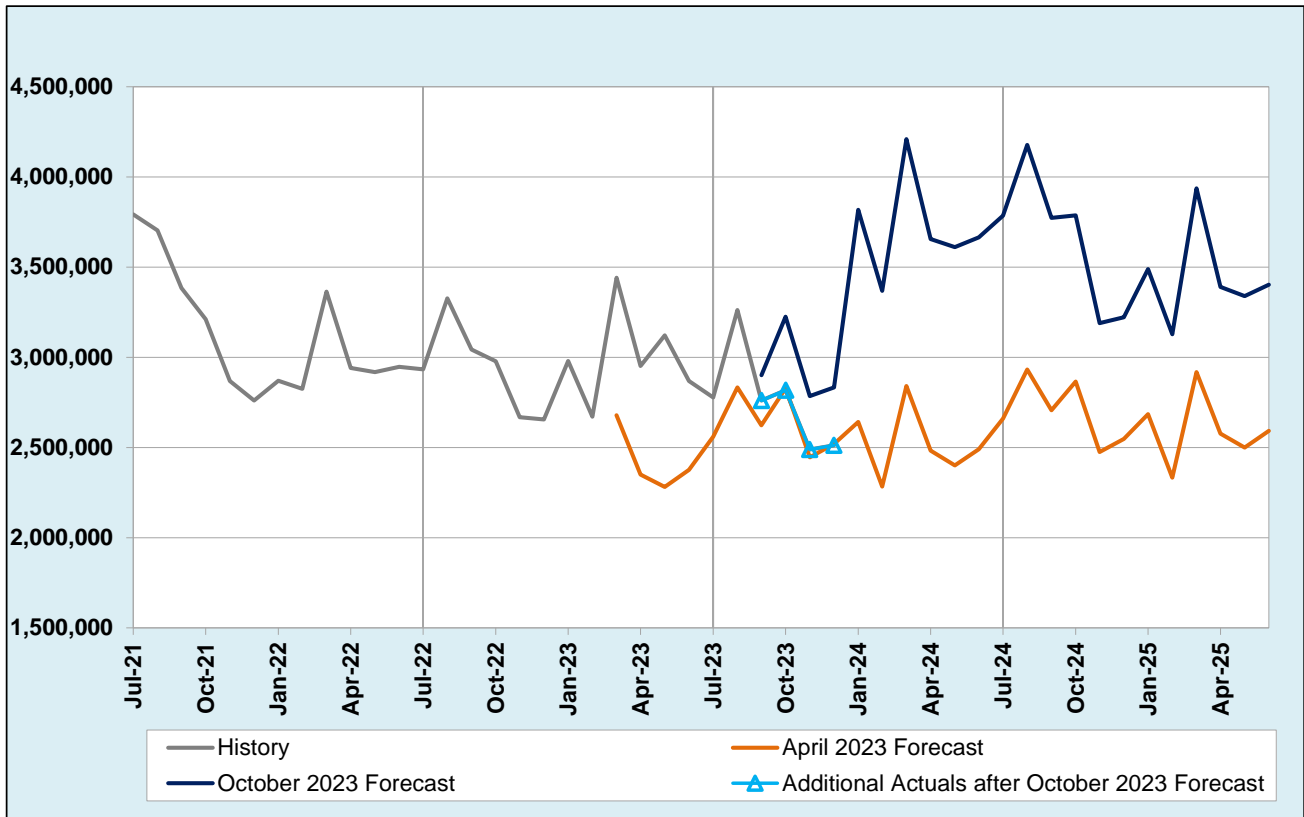
This includes: standard title, heavy vehicle title, salvage title, and ATV title. Snowmobile title is not included because the funds go to sno-parks.



Month	Actual	October 2023 Forecast	Over/Under Forecast (October 2023)		April 2023 Forecast	Over/Under Forecast (April 2023)	
Apr-23	\$7,526,711	-	-	-	\$8,930,793	-\$1,404,082	-15.7%
May-23	\$9,087,309	-	-	-	\$8,833,203	\$254,106	2.9%
Jun-23	\$7,425,482	-	-	-	\$8,663,394	-\$1,237,912	-14.3%
Jul-23	\$9,650,891	-	-	-	\$8,799,206	\$851,685	9.7%
Aug-23	\$9,498,236	-	-	-	\$9,696,860	-\$198,624	-2.0%
Sep-23	\$8,565,609	\$8,121,003	\$444,606	5.5%	\$8,754,957	-\$189,348	-2.2%
Oct-23	\$8,597,510	\$9,132,394	-\$534,884	-5.9%	\$9,779,976	-\$1,182,466	-12.1%
Nov-23	\$7,043,296	\$7,639,016	-\$595,720	-7.8%	\$8,131,328	-\$1,088,032	-13.4%
Dec-23	\$6,948,680	\$8,034,790	-\$1,086,110	-13.5%	\$8,561,638	-\$1,612,958	-18.8%
Jan-24	-	\$7,691,901	-	-	\$8,177,499	-	-
Feb-24	-	\$7,556,712	-	-	\$8,121,348	-	-
Mar-24	-	\$9,404,541	-	-	\$10,154,834	-	-
Apr-24	-	\$8,392,870	-	-	\$9,066,600	-	-
May-24	-	\$8,576,929	-	-	\$8,919,748	-	-
Cumulative Over/Under Forecast			-\$1,772,108	-5.7%		-\$5,807,631	-7.8%

DMV - Driver Fees (Highway Fund)

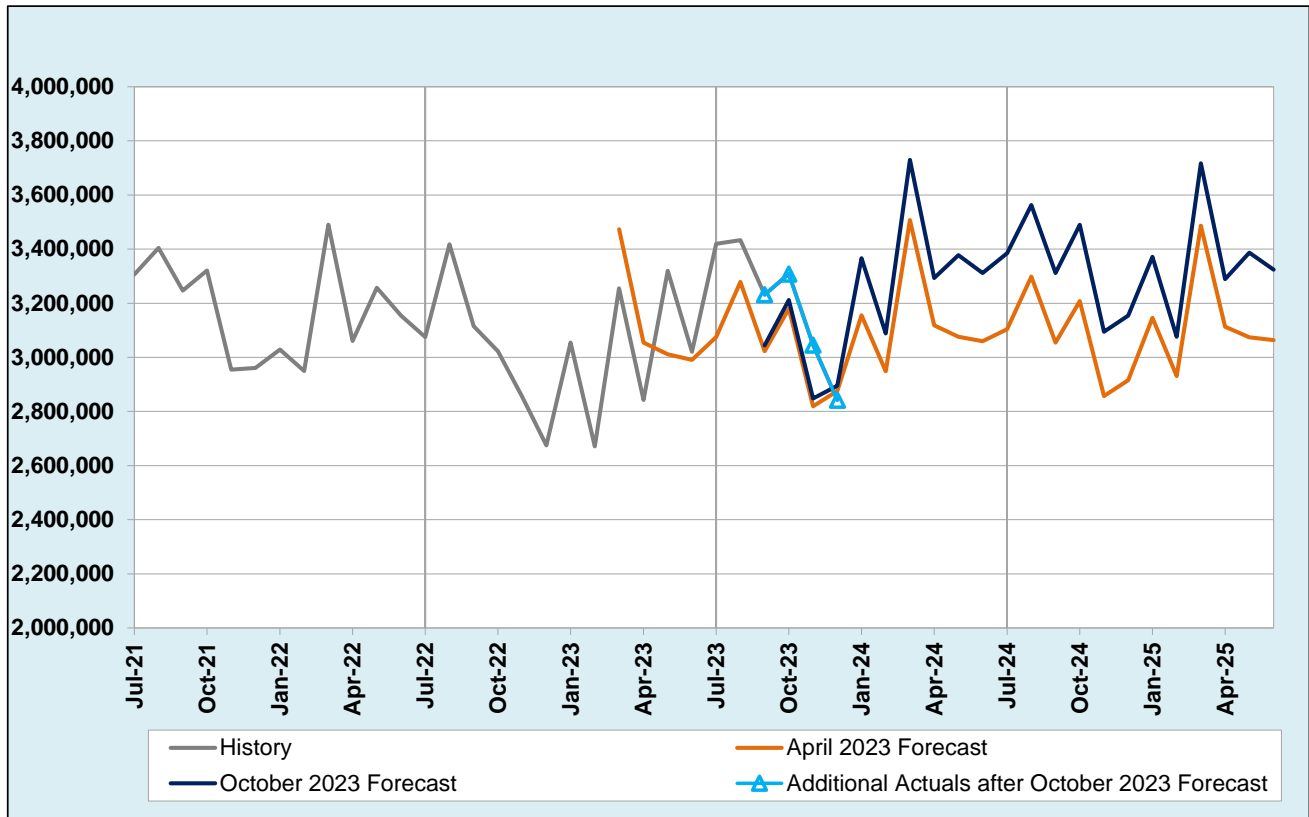
This includes: commercial and non-commercial driver licenses, commercial and non-commercial knowledge and skill tests, and driver endorsements.



Month	Actual	October 2023 Forecast	Over/Under Forecast (October 2023)		April 2023 Forecast	Over/Under Forecast (April 2023)	
Apr-23	\$2,951,843	-	-	-	\$2,350,618	\$601,225	25.6%
May-23	\$3,120,906	-	-	-	\$2,281,266	\$839,640	36.8%
Jun-23	\$2,868,750	-	-	-	\$2,375,337	\$493,413	20.8%
Jul-23	\$2,777,263	-	-	-	\$2,559,945	\$217,318	8.5%
Aug-23	\$3,261,431	-	-	-	\$2,833,683	\$427,749	15.1%
Sep-23	\$2,761,004	\$2,901,273	-\$140,269	-4.8%	\$2,622,826	\$138,178	5.3%
Oct-23	\$2,817,819	\$3,224,712	-\$406,893	-12.6%	\$2,828,355	-\$10,536	-0.4%
Nov-23	\$2,489,024	\$2,785,000	-\$295,976	-10.6%	\$2,445,132	\$43,892	1.8%
Dec-23	\$2,512,327	\$2,833,114	-\$320,787	-11.3%	\$2,520,282	-\$7,955	-0.3%
Jan-24	-	\$3,817,834	-	-	\$2,641,647	-	-
Feb-24	-	\$3,368,965	-	-	\$2,283,044	-	-
Mar-24	-	\$4,209,558	-	-	\$2,840,491	-	-
Apr-24	-	\$3,655,424	-	-	\$2,482,061	-	-
May-24	-	\$3,611,596	-	-	\$2,401,510	-	-
Cumulative Over/Under Forecast			-\$1,163,925	-11.0%		\$2,742,924	10.7%

Other DMV (Highway Fund)

This includes highway fees collected from: trip permit fees, plate fees, record sales, and miscellaneous vehicle transactions (VIN inspection, surcharges, and penalties).



Month	Actual	October 2023 Forecast	Over/Under Forecast (October 2023)		April 2023 Forecast	Over/Under Forecast (April 2023)	
Apr-23	\$2,842,234	-	-	-	\$3,054,281	-\$212,047	-6.9%
May-23	\$3,320,143	-	-	-	\$3,011,428	\$308,715	10.3%
Jun-23	\$3,020,063	-	-	-	\$2,991,118	\$28,945	1.0%
Jul-23	\$3,419,481	-	-	-	\$3,075,533	\$343,948	11.2%
Aug-23	\$3,433,215	-	-	-	\$3,279,259	\$153,956	4.7%
Sep-23	\$3,231,842	\$3,043,938	\$187,904	6.2%	\$3,022,589	\$209,254	6.9%
Oct-23	\$3,308,170	\$3,211,881	\$96,289	3.0%	\$3,179,835	\$128,335	4.0%
Nov-23	\$3,046,212	\$2,848,003	\$198,210	7.0%	\$2,819,152	\$227,061	8.1%
Dec-23	\$2,842,169	\$2,895,216	-\$53,048	-1.8%	\$2,875,673	-\$33,505	-1.2%
Jan-24	-	\$3,366,610	-	-	\$3,155,811	-	-
Feb-24	-	\$3,088,659	-	-	\$2,948,386	-	-
Mar-24	-	\$3,729,969	-	-	\$3,507,383	-	-
Apr-24	-	\$3,292,993	-	-	\$3,118,301	-	-
May-24	-	\$3,377,111	-	-	\$3,076,382	-	-
Cumulative Over/Under Forecast			\$429,355	3.5%		\$1,154,661	4.1%