

Monthly Forecast Variance Report
September 2024

Monthly Forecast Variance Reports show the difference between the forecasted revenues and the actual revenues for highway fees. The Total Highway Fees include: Motor Fuels, Commerce and Compliance Fees, Driver and Motor Vehicle Highway Fees, as well as Vehicle Use Tax and Other Highway Revenues.

Summary

Total Highway Fees				
Month	Actual *	April 2024 Current Forecast	Over/Under Forecast	%
Jan-24	\$131,818,792	\$131,801,248	\$17,544	0.0%
Feb-24	\$134,359,216	\$126,218,048	\$8,141,168	6.5%
Mar-24	\$136,475,680	\$144,431,648	-\$7,955,968	-5.5%
Apr-24	\$146,500,608	\$142,164,032	\$4,336,576	3.1%
May-24	\$153,289,504	\$149,318,928	\$3,970,576	2.7%
Jun-24	\$139,030,768	\$147,795,536	-\$8,764,768	-5.9%
Jul-24	\$159,918,192	\$152,772,544	\$7,145,648	4.7%
Cumulative Over/Under Forecast			\$6,890,776	0.7%

Total Motor Fuels Fees				
Month	Actual	April 2024 Forecast	Over/Under Forecast	%
Jan-24	\$48,876,822	\$51,877,284	-\$3,000,462	-5.8%
Feb-24	\$50,783,497	\$47,828,432	\$2,955,065	6.2%
Mar-24	\$55,915,838	\$56,479,236	-\$563,398	-1.0%
Apr-24	\$56,717,014	\$56,684,216	\$32,798	0.1%
May-24	\$60,612,983	\$60,308,128	\$304,855	0.5%
Jun-24	\$61,525,446	\$61,680,228	-\$154,782	-0.3%
Jul-24	\$64,831,173	\$64,629,296	\$201,877	0.3%
Cumulative Over/Under Forecast			-\$224,047	-0.1%

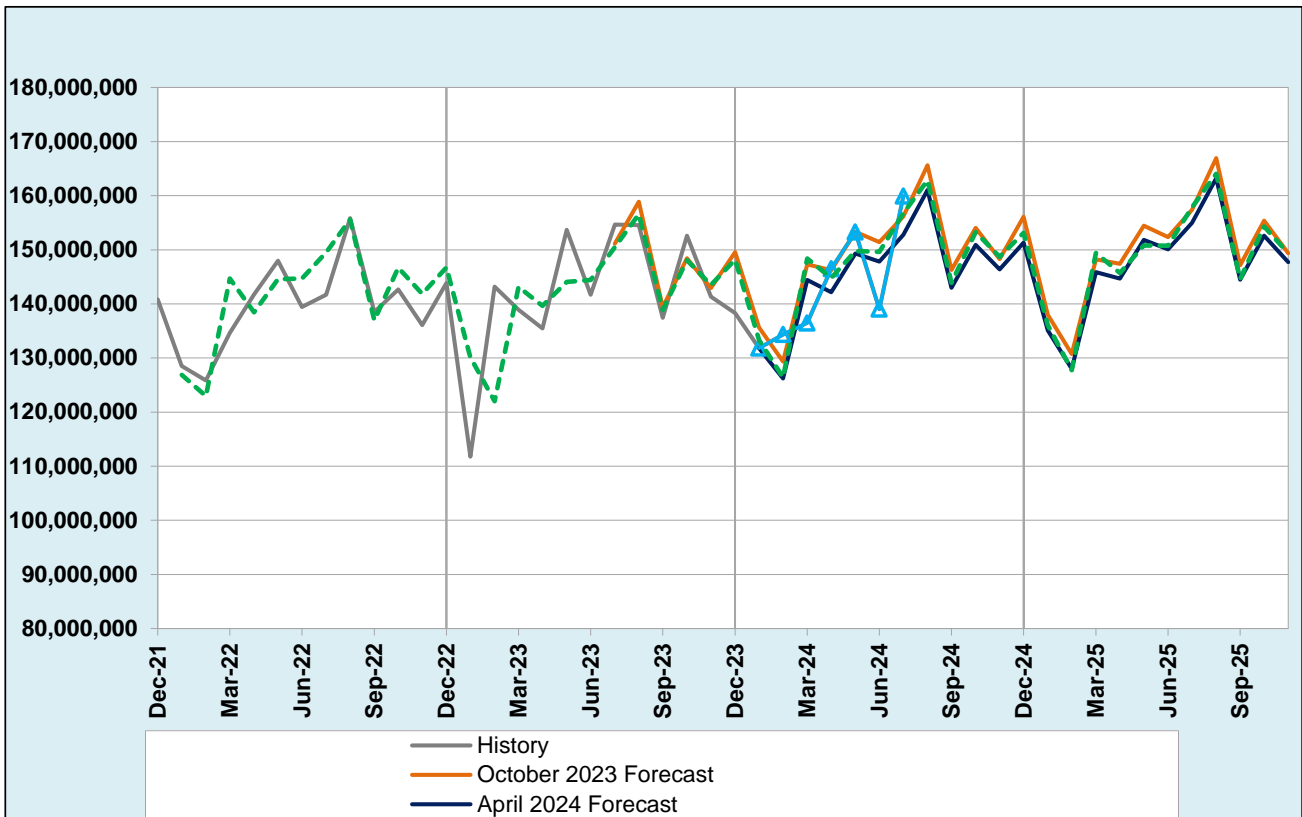
Total Commerce and Compliance (CCD) Fees				
Month	Actual	April 2024 Forecast	Over/Under Forecast	%
Jan-24	\$41,788,744	\$38,976,832	\$2,811,912	7.2%
Feb-24	\$38,855,788	\$38,832,800	\$22,988	0.1%
Mar-24	\$33,644,004	\$39,202,896	-\$5,558,892	-14.2%
Apr-24	\$42,717,436	\$42,316,516	\$400,920	0.9%
May-24	\$43,783,092	\$45,081,244	-\$1,298,152	-2.9%
Jun-24	\$31,048,604	\$39,640,820	-\$8,592,216	-21.7%
Jul-24	\$47,774,136	\$44,234,856	\$3,539,280	8.0%
Cumulative Over/Under Forecast			-\$8,674,160	-3.1%

Total Driver and Motor Vehicle (DMV) Highway Fees				
Month	Actual	April 2024 Forecast	Over/Under Forecast	%
Feb-24	\$40,313,668	\$35,358,292	\$4,955,376	14.0%
Mar-24	\$42,087,280	\$44,126,656	-\$2,039,376	-4.6%
Apr-24	\$42,799,868	\$39,106,344	\$3,693,524	9.4%
May-24	\$44,829,728	\$40,051,544	\$4,778,184	11.9%
Jun-24	\$39,877,372	\$40,242,596	-\$365,224	-0.9%
Jul-24	\$43,200,732	\$40,099,084	\$3,101,648	7.7%
Aug-24	\$44,710,144	\$43,902,940	\$807,204	1.8%
Cumulative Over/Under Forecast			\$14,931,336	5.0%

* Total highway actuals are not final because of lags in getting the actuals in certain program areas. In the cases when actuals are lagging the forecasted revenues are used instead, for that reason historic actuals will be adjusted each month as data matures.

Total Highway Fees

Total Highway Fees include: Motor Fuels, Commerce and Compliance Fees, Driver and Motor Vehicle Highway Fees, as well as Vehicle Use Tax and Other Highway Revenues.



Month	Actual *	April 2024 Current Forecast	Over/Under Forecast (April 2024)		October 2023 Previous Forecast	Over/Under Forecast (October 2023)	
Aug-23	\$154,575,104	-	-	-	\$158,878,000	-\$4,302,896	-2.7%
Sep-23	\$137,405,312	-	-	-	\$139,384,240	-\$1,978,928	-1.4%
Oct-23	\$152,601,312	-	-	-	\$148,434,160	\$4,167,152	2.8%
Nov-23	\$141,344,704	-	-	-	\$142,930,336	-\$1,585,632	-1.1%
Dec-23	\$138,276,720	-	-	-	\$149,547,840	-\$11,271,120	-7.5%
Jan-24	\$131,818,792	\$131,801,248	\$17,544	0.0%	\$135,642,848	-\$3,824,056	-2.8%
Feb-24	\$134,359,216	\$126,218,048	\$8,141,168	6.5%	\$129,351,104	\$5,008,112	3.9%
Mar-24	\$136,475,680	\$144,431,648	-\$7,955,968	-5.5%	\$147,300,000	-\$10,824,320	-7.3%
Apr-24	\$146,500,608	\$142,164,032	\$4,336,576	3.1%	\$146,221,952	\$278,656	0.2%
May-24	\$153,289,504	\$149,318,928	\$3,970,576	2.7%	\$153,337,248	-\$47,744	0.0%
Jun-24	\$139,030,768	\$147,795,536	-\$8,764,768	-5.9%	\$151,398,912	-\$12,368,144	-8.2%
Jul-24	\$159,918,192	\$152,772,544	\$7,145,648	4.7%	\$156,157,600	\$3,760,592	2.4%
Aug-24	-	\$161,063,664	-	-	\$165,643,072	-	-
Sep-24	-	\$142,979,168	-	-	\$146,285,632	-	-
Cumulative Over/Under Forecast			\$6,890,776	0.7%		-\$32,988,328	-1.9%

* Total highway actuals are not final because of lags in getting the actuals in certain program areas. In the cases when actuals are lagging the forecasted revenues are used instead, for that reason historic actuals will be adjusted each month as data

Total Highway Fees

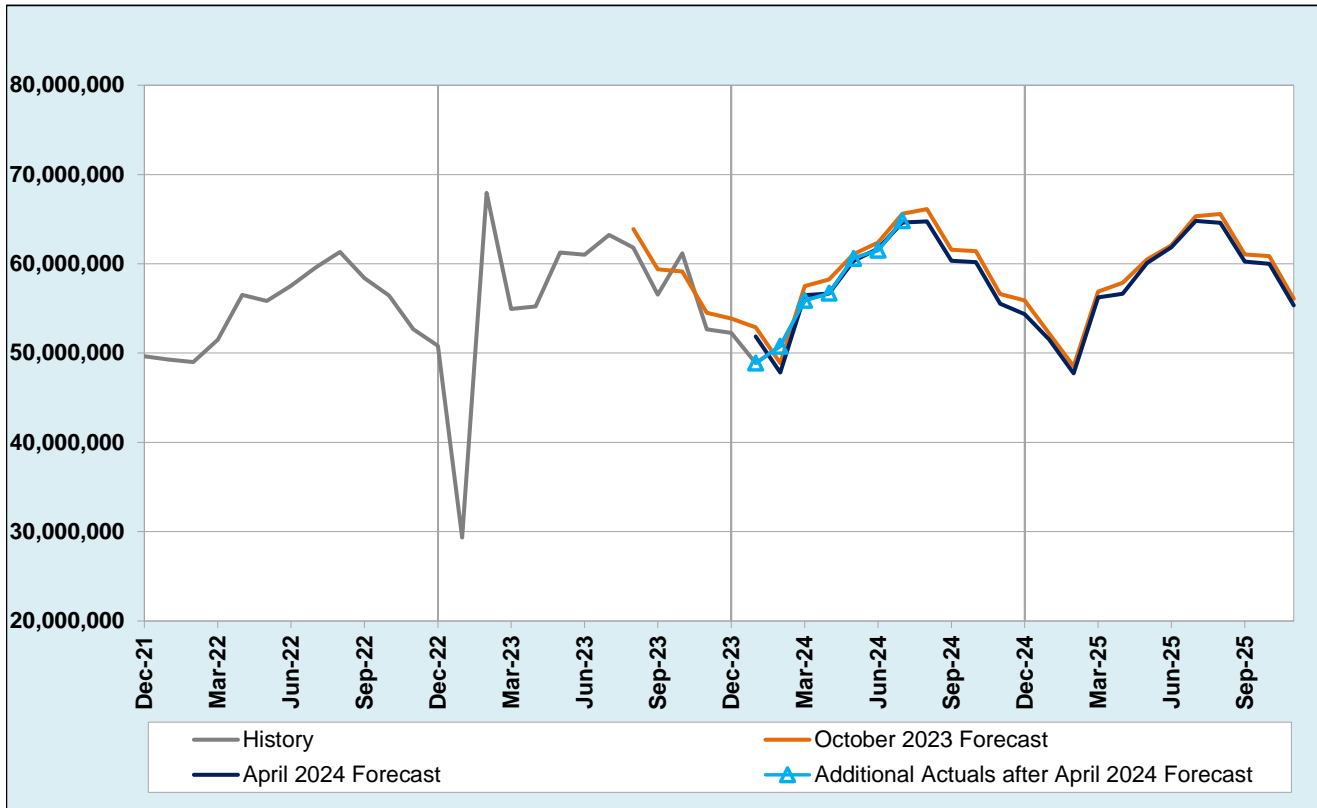
Total Highway Fees include: Motor Fuels, Commerce and Compliance Fees, Driver and Motor Vehicle Highway Fees, as well as Vehicle Use Tax and Other Highway Revenues.

Month	Actual *	April 2024 Current Forecast	Over/Under Forecast (April 2024)		April 2022 Budget Forecast	Over/Under Forecast (April 2022)	
Jan-22	\$128,515,248	-	-	-	\$126,902,024	\$1,613,224	1.3%
Feb-22	\$125,831,080	-	-	-	\$122,955,088	\$2,875,992	2.3%
Mar-22	\$134,649,120	-	-	-	\$144,661,024	-\$10,011,904	-6.9%
Apr-22	\$141,744,256	-	-	-	\$138,439,088	\$3,305,168	2.4%
May-22	\$147,981,392	-	-	-	\$144,552,368	\$3,429,024	2.4%
Jun-22	\$139,445,312	-	-	-	\$144,675,568	-\$5,230,256	-3.6%
Jul-22	\$141,686,512	-	-	-	\$149,494,464	-\$7,807,952	-5.2%
Aug-22	\$155,866,784	-	-	-	\$155,576,768	\$290,016	0.2%
Sep-22	\$138,484,032	-	-	-	\$136,941,824	\$1,542,208	1.1%
Oct-22	\$142,689,120	-	-	-	\$146,684,144	-\$3,995,024	-2.7%
Nov-22	\$136,062,992	-	-	-	\$141,868,336	-\$5,805,344	-4.1%
Dec-22	\$143,845,616	-	-	-	\$146,724,544	-\$2,878,928	-2.0%
Jan-23	\$111,769,944	-	-	-	\$130,113,096	-\$18,343,152	-14.1%
Feb-23	\$143,193,072	-	-	-	\$122,013,800	\$21,179,272	17.4%
Mar-23	\$138,901,920	-	-	-	\$143,141,472	-\$4,239,552	-3.0%
Apr-23	\$135,464,000	-	-	-	\$139,650,000	-\$4,186,000	-3.0%
May-23	\$153,702,960	-	-	-	\$144,066,448	\$9,636,512	6.7%
Jun-23	\$141,717,504	-	-	-	\$144,443,280	-\$2,725,776	-1.9%
Jul-23	\$154,667,776	-	-	-	\$150,468,112	\$4,199,664	2.8%
Aug-23	\$154,575,104	-	-	-	\$156,553,792	-\$1,978,688	-1.3%
Sep-23	\$137,405,312	-	-	-	\$138,854,464	-\$1,449,152	-1.0%
Oct-23	\$152,601,312	-	-	-	\$148,056,592	\$4,544,720	3.1%
Nov-23	\$141,344,704	-	-	-	\$143,488,688	-\$2,143,984	-1.5%
Dec-23	\$138,276,720	-	-	-	\$148,161,392	-\$9,884,672	-6.7%
Jan-24	\$131,818,792	\$131,801,248	\$17,544	0.0%	\$133,306,528	-\$1,487,736	-1.1%
Feb-24	\$134,359,216	\$126,218,048	\$8,141,168	6.5%	\$126,410,792	\$7,948,424	6.3%
Mar-24	\$136,475,680	\$144,431,648	-\$7,955,968	-5.5%	\$148,398,208	-\$11,922,528	-8.0%
Apr-24	\$146,500,608	\$142,164,032	\$4,336,576	3.1%	\$144,793,952	\$1,706,656	1.2%
May-24	\$153,289,504	\$149,318,928	\$3,970,576	2.7%	\$149,754,640	\$3,534,864	2.4%
Jun-24	\$139,030,768	\$147,795,536	-\$8,764,768	-5.9%	\$149,630,032	-\$10,599,264	-7.1%
Jul-24	\$159,918,192	\$152,772,544	\$7,145,648	4.7%	\$156,713,088	\$3,205,104	2.0%
Aug-24	-	\$161,063,664	-	-	\$162,837,392	-	-
Sep-24	-	\$142,979,168	-	-	\$143,932,960	-	-
Cumulative Over/Under Forecast			\$6,890,776	0.7%		-\$35,679,064	-0.8%

* Total highway actuals are not final because of lags in getting the actuals in certain program areas. In the cases when actuals are lagging the forecasted revenues are used instead, for that reason historic actuals will be adjusted each month as data

Total Motor Fuels Fees

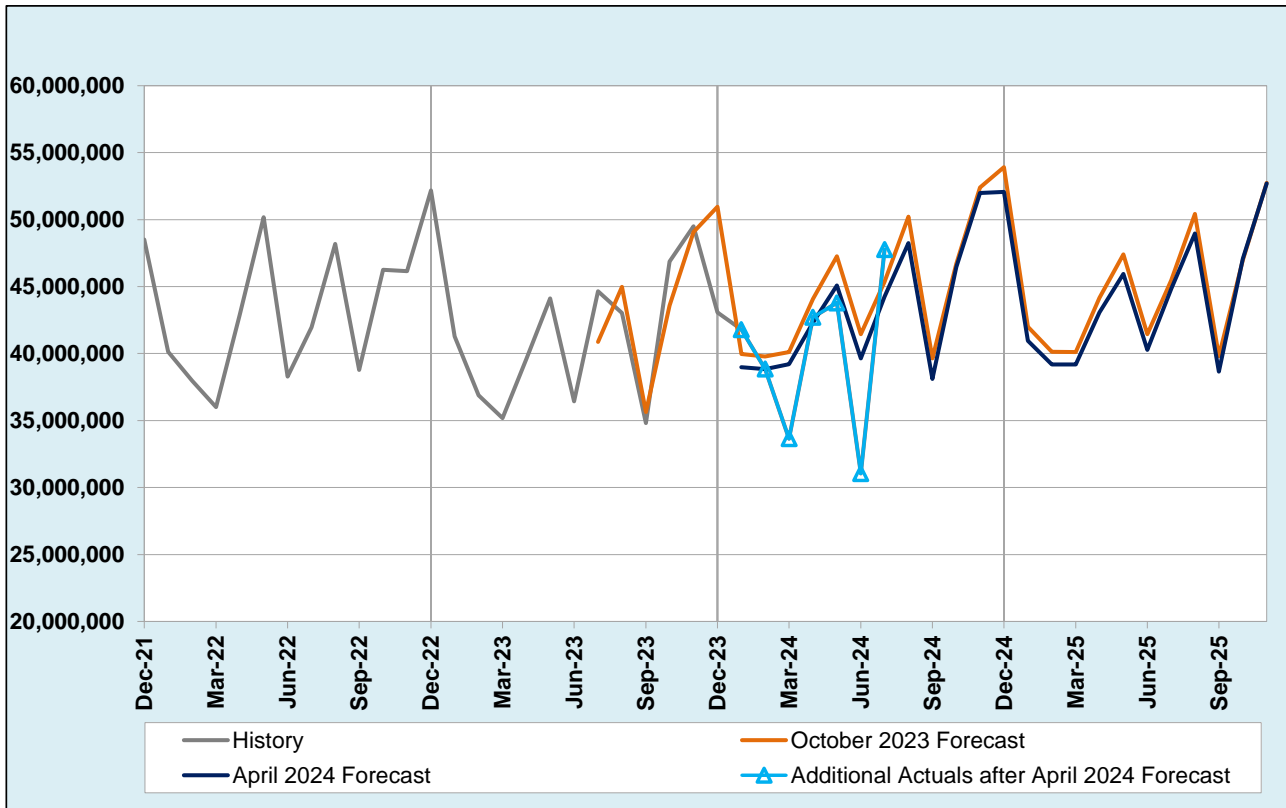
Motor Fuels includes revenues collected on taxable fuel sells including gasoline and diesel. Current rate is \$0.40 per gallon.



Month	Actual	April 2024 Forecast	Over/Under Forecast (April 2024)		October 2023 Forecast	Over/Under Forecast (October 2023)	
Aug-23	\$61,827,494	-	-	-	\$63,871,112	-\$2,043,618	-3.2%
Sep-23	\$56,560,679	-	-	-	\$59,374,372	-\$2,813,693	-4.7%
Oct-23	\$61,179,506	-	-	-	\$59,133,976	\$2,045,530	3.5%
Nov-23	\$52,669,191	-	-	-	\$54,519,524	-\$1,850,333	-3.4%
Dec-23	\$52,258,018	-	-	-	\$53,879,384	-\$1,621,366	-3.0%
Jan-24	\$48,876,822	\$51,877,284	-\$3,000,462	-5.8%	\$52,871,864	-\$3,995,042	-7.6%
Feb-24	\$50,783,497	\$47,828,432	\$2,955,065	6.2%	\$48,888,604	\$1,894,893	3.9%
Mar-24	\$55,915,838	\$56,479,236	-\$563,398	-1.0%	\$57,510,284	-\$1,594,446	-2.8%
Apr-24	\$56,717,014	\$56,684,216	\$32,798	0.1%	\$58,247,572	-\$1,530,558	-2.6%
May-24	\$60,612,983	\$60,308,128	\$304,855	0.5%	\$61,079,084	-\$466,101	-0.8%
Jun-24	\$61,525,446	\$61,680,228	-\$154,782	-0.3%	\$62,362,316	-\$836,870	-1.3%
Jul-24	\$64,831,173	\$64,629,296	\$201,877	0.3%	\$65,616,964	-\$785,791	-1.2%
Aug-24	-	\$64,731,836	-	-	\$66,125,776	-	-
Sep-24	-	\$60,349,572	-	-	\$61,572,208	-	-
Cumulative Over/Under Forecast			-\$224,047	-0.1%		-\$13,597,395	-2.0%

Total Commerce and Compliance (CCD) Fees

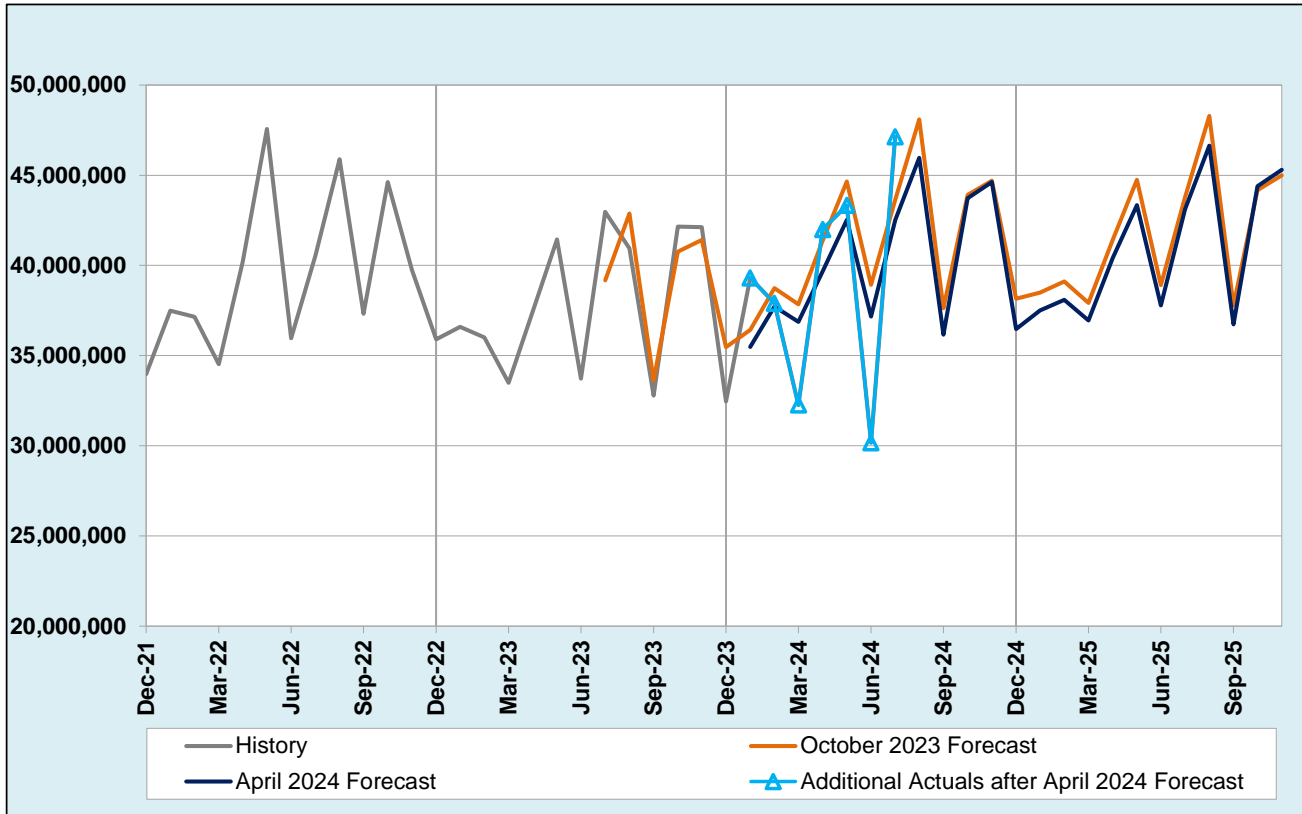
Commerce and Compliance fees include weight-mile revenues and registration fees for heavy-duty commercial vehicles.



Month	Actual	April 2024 Forecast	Over/Under Forecast (April 2024)		October 2023 Forecast	Over/Under Forecast (October 2023)	
Aug-23	\$43,023,808	-	-	-	\$44,978,840	-\$1,955,032	-4.3%
Sep-23	\$34,802,788	-	-	-	\$35,634,584	-\$831,796	-2.3%
Oct-23	\$46,864,252	-	-	-	\$43,591,312	\$3,272,940	7.5%
Nov-23	\$49,494,132	-	-	-	\$49,063,392	\$430,740	0.9%
Dec-23	\$43,066,716	-	-	-	\$50,953,168	-\$7,886,452	-15.5%
Jan-24	\$41,788,744	\$38,976,832	\$2,811,912	7.2%	\$39,975,072	\$1,813,672	4.5%
Feb-24	\$38,855,788	\$38,832,800	\$22,988	0.1%	\$39,792,740	-\$936,952	-2.4%
Mar-24	\$33,644,004	\$39,202,896	-\$5,558,892	-14.2%	\$40,118,204	-\$6,474,200	-16.1%
Apr-24	\$42,717,436	\$42,316,516	\$400,920	0.9%	\$44,077,416	-\$1,359,980	-3.1%
May-24	\$43,783,092	\$45,081,244	-\$1,298,152	-2.9%	\$47,260,164	-\$3,477,072	-7.4%
Jun-24	\$31,048,604	\$39,640,820	-\$8,592,216	-21.7%	\$41,443,156	-\$10,394,552	-25.1%
Jul-24	\$47,774,136	\$44,234,856	\$3,539,280	8.0%	\$45,343,216	\$2,430,920	5.4%
Aug-24	-	\$48,256,808	-	-	\$50,221,096	-	-
Sep-24	-	\$38,105,708	-	-	\$39,649,516	-	-
Cumulative Over/Under Forecast			-\$8,674,160	-3.1%		-\$25,367,764	-5.1%

CCD Weight Mile Tax Revenue (Highway Use)

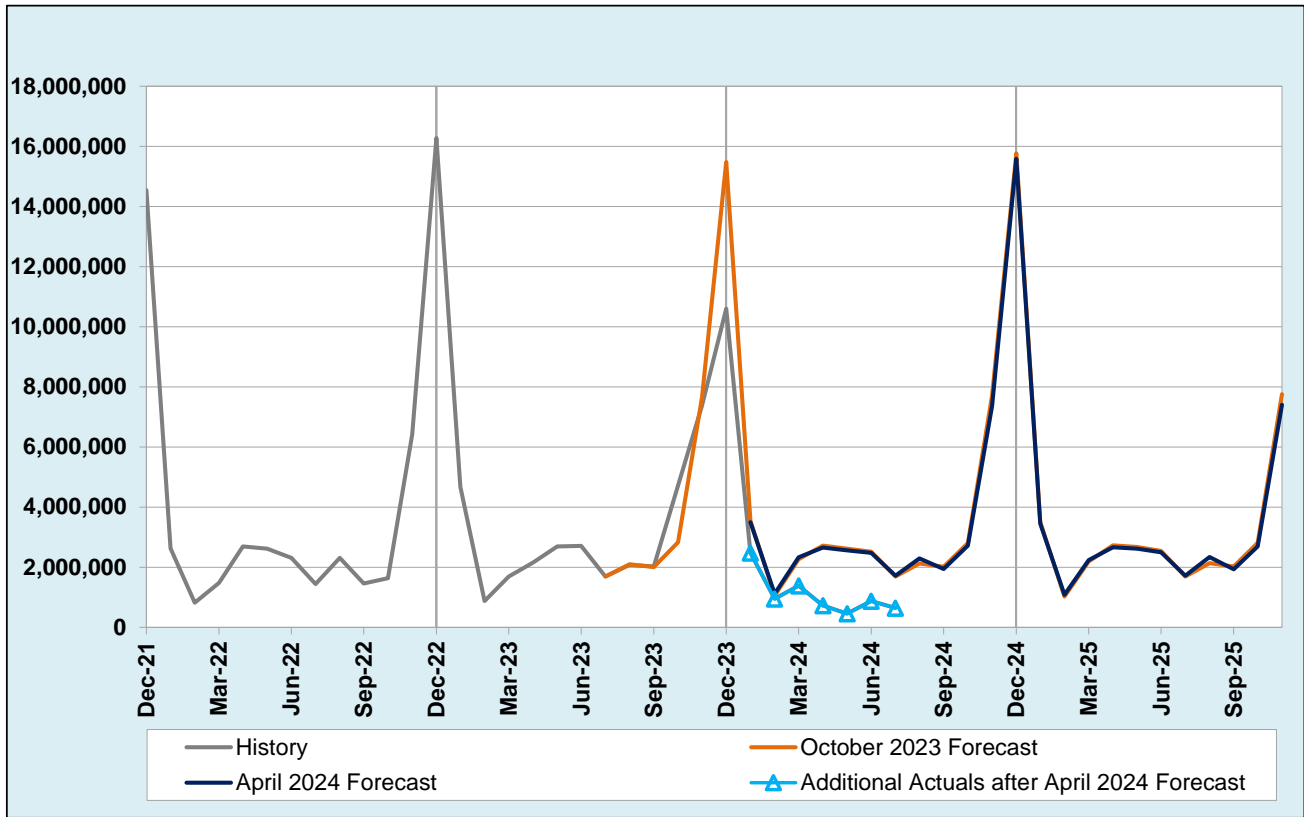
The weight-mile tax is the largest source of trucking-related revenue at just under 90 percent of total revenue collected by CCD. This highway use tax applies to trucks with a gross weight over 26,000 pounds. The tax paid by a motor carrier varies with the weight of the vehicle, the number of miles traveled, and the axle configuration.



Month	Actual	April 2024 Forecast	Over/Under Forecast (April 2024)		October 2023 Forecast	Over/Under Forecast (October 2023)	
Aug-23	\$40,948,079	-	-	-	\$42,881,548	-\$1,933,469	-4.5%
Sep-23	\$32,779,952	-	-	-	\$33,628,572	-\$848,620	-2.5%
Oct-23	\$42,145,927	-	-	-	\$40,764,840	\$1,381,087	3.4%
Nov-23	\$42,119,900	-	-	-	\$41,408,024	\$711,876	1.7%
Dec-23	\$32,465,007	-	-	-	\$35,471,524	-\$3,006,517	-8.5%
Jan-24	\$39,311,078	\$35,482,172	\$3,828,906	10.8%	\$36,427,752	\$2,883,326	7.9%
Feb-24	\$37,906,211	\$37,719,588	\$186,623	0.5%	\$38,740,872	-\$834,661	-2.2%
Mar-24	\$32,261,818	\$36,869,076	-\$4,607,258	-12.5%	\$37,848,404	-\$5,586,586	-14.8%
Apr-24	\$41,992,587	\$39,662,524	\$2,330,063	5.9%	\$41,359,624	\$632,963	1.5%
May-24	\$43,325,917	\$42,517,228	\$808,689	1.9%	\$44,646,896	-\$1,320,979	-3.0%
Jun-24	\$30,173,026	\$37,163,972	-\$6,990,946	-18.8%	\$38,931,364	-\$8,758,338	-22.5%
Jul-24	\$47,130,502	\$42,516,716	\$4,613,786	10.9%	\$43,655,500	\$3,475,002	8.0%
Aug-24	-	\$45,961,476	-	-	\$48,095,284	-	-
Sep-24	-	\$36,167,496	-	-	\$37,635,608	-	-
Cumulative Over/Under Forecast			\$169,863	0.1%		-\$13,204,915	-2.9%

CCD Registration Fee

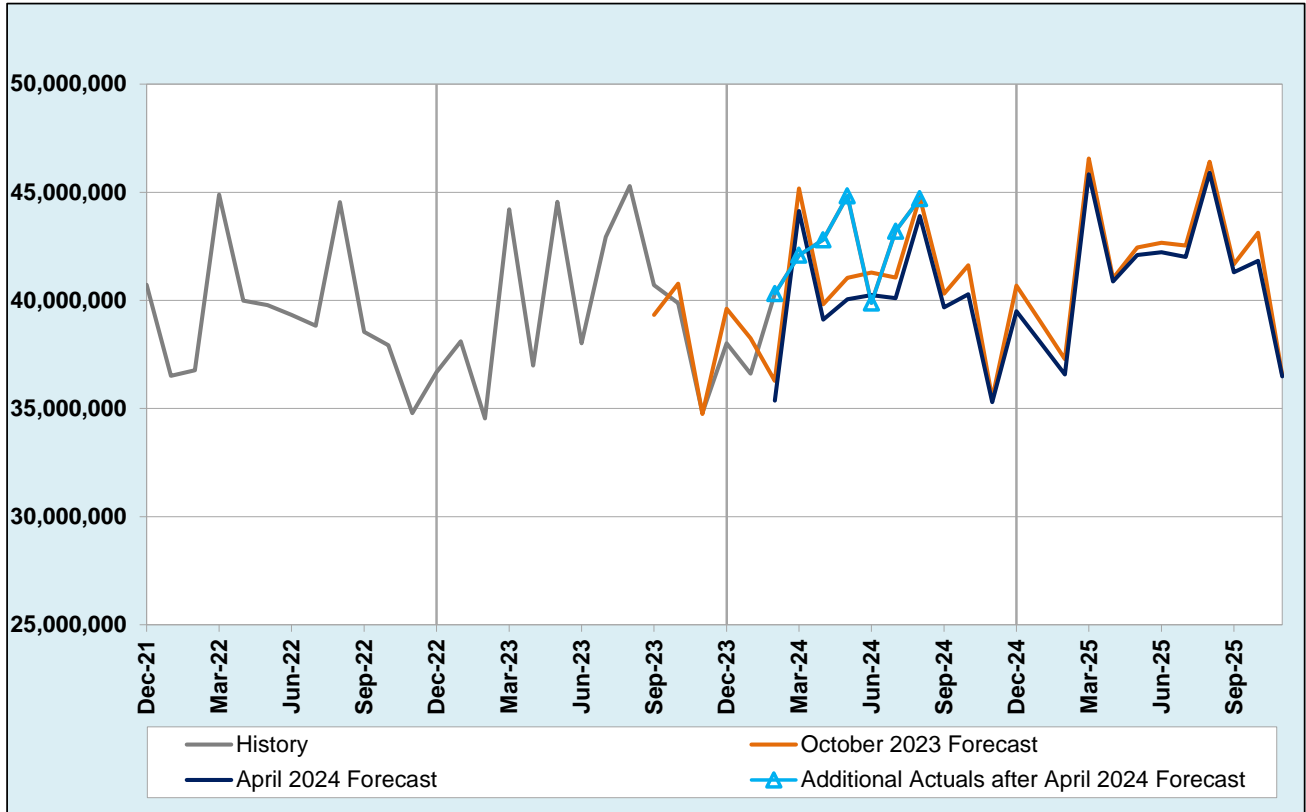
Heavy trucks pay annual registration fees and other trip based fees that are included here.



Month	Actual	April 2024 Forecast	Over/Under Forecast (April 2024)	October 2023 Forecast	Over/Under Forecast (October 2023)	
Aug-23	\$2,075,728	-	-	\$2,097,291	-\$21,564	-1.0%
Sep-23	\$2,022,835	-	-	\$2,006,010	\$16,825	0.8%
Oct-23	\$4,718,327	-	-	\$2,826,473	\$1,891,853	66.9%
Nov-23	\$7,374,234	-	-	\$7,655,369	-\$281,135	-3.7%
Dec-23	\$10,601,710	-	-	\$15,481,645	-\$4,879,935	-31.5%
Jan-24	\$2,477,667	\$3,494,660	-\$1,016,993	\$3,547,322	-\$1,069,654	-30.2%
Feb-24	\$949,575	\$1,113,213	-\$163,638	\$1,051,868	-\$102,293	-9.7%
Mar-24	\$1,382,188	\$2,333,819	-\$951,631	\$2,269,801	-\$887,613	-39.1%
Apr-24	\$724,848	\$2,653,993	-\$1,929,145	\$2,717,792	-\$1,992,943	-73.3%
May-24	\$457,175	\$2,564,015	-\$2,106,839	\$2,613,268	-\$2,156,092	-82.5%
Jun-24	\$875,579	\$2,476,848	-\$1,601,269	\$2,511,792	-\$1,636,213	-65.1%
Jul-24	\$643,635	\$1,718,141	-\$1,074,506	\$1,687,716	-\$1,044,081	-61.9%
Aug-24	-	\$2,295,332	-	\$2,125,811	-	-
Sep-24	-	\$1,938,213	-	\$2,013,909	-	-
Cumulative Over/Under Forecast			-\$8,844,021	-117.8%	-\$12,162,846	-35.5%

Total Driver and Motor Vehicle (DMV) Highway Fees

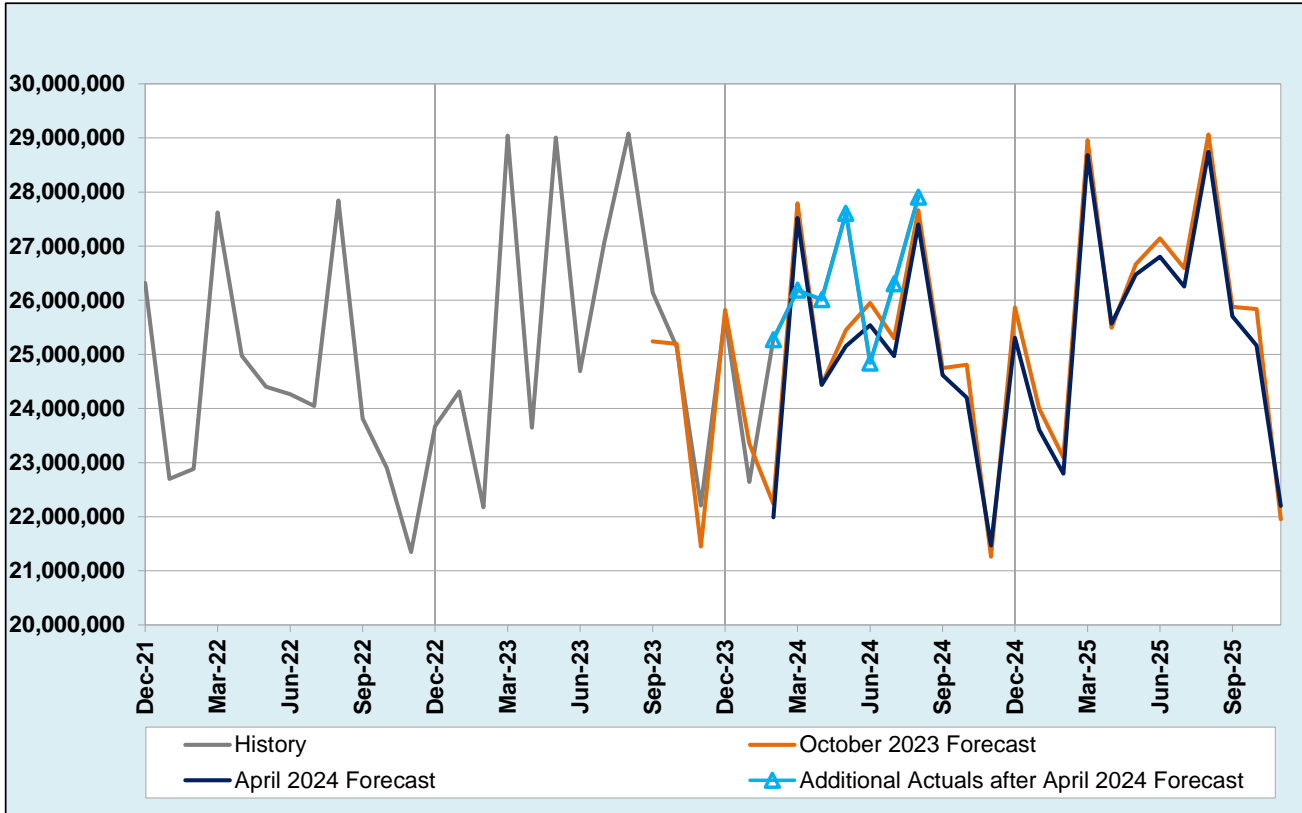
The Vehicle program area contains the transactions related to legal ownership and operation of a vehicle, including titling, plates, registrations, and permits. The Driver program contains the transactions related to the legal right to operate a vehicle, including permits, licenses, endorsements, and the associated tests to obtain these rights to drive.



Month	Actual	April 2024 Forecast	Over/Under Forecast (April 2024)		October 2023 Forecast	Over/Under Forecast (October 2023)	
Sep-23	\$40,712,432	-	-	-	\$39,325,804	\$1,386,628	3.5%
Oct-23	\$39,876,200	-	-	-	\$40,776,696	-\$900,496	-2.2%
Nov-23	\$34,803,532	-	-	-	\$34,745,944	\$57,588	0.2%
Dec-23	\$38,012,052	-	-	-	\$39,610,908	-\$1,598,856	-4.0%
Jan-24	\$36,608,520	-	-	-	\$38,243,320	-\$1,634,800	-4.3%
Feb-24	\$40,313,668	\$35,358,292	\$4,955,376	14.0%	\$36,280,544	\$4,033,124	11.1%
Mar-24	\$42,087,280	\$44,126,656	-\$2,039,376	-4.6%	\$45,169,592	-\$3,082,312	-6.8%
Apr-24	\$42,799,868	\$39,106,344	\$3,693,524	9.4%	\$39,813,336	\$2,986,532	7.5%
May-24	\$44,829,728	\$40,051,544	\$4,778,184	11.9%	\$41,041,316	\$3,788,412	9.2%
Jun-24	\$39,877,372	\$40,242,596	-\$365,224	-0.9%	\$41,284,596	-\$1,407,224	-3.4%
Jul-24	\$43,200,732	\$40,099,084	\$3,101,648	7.7%	\$41,060,076	\$2,140,656	5.2%
Aug-24	\$44,710,144	\$43,902,940	\$807,204	1.8%	\$44,768,380	-\$58,236	-0.1%
Sep-24	-	\$39,679,004	-	-	\$40,309,472	-	-
Oct-24	-	\$40,285,184	-	-	\$41,616,580	-	-
Cumulative Over/Under Forecast			\$14,931,336	5.0%		\$5,711,016	1.2%

DMV - Vehicle Registration Fees

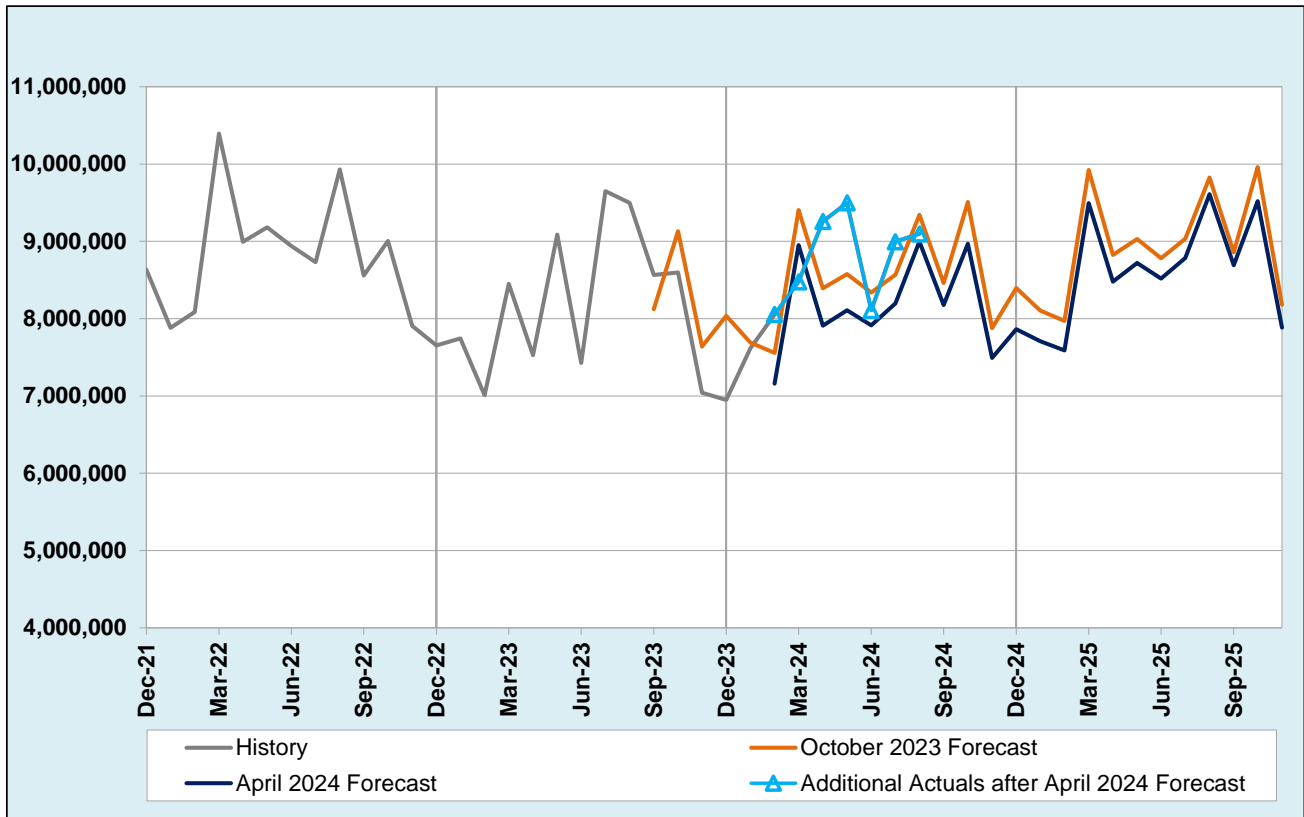
This includes: light duty vehicle registrations such as passenger vehicles and motorcycles/mopeds as well as medium-heavy duty vehicle registrations that are not subject to weight-mile taxation (farm trucks, buses, motor homes, trailers, campers, etc.)



Month	Actual	April 2024 Forecast	Over/Under Forecast (April 2024)		October 2023 Forecast	Over/Under Forecast (October 2023)	
Sep-23	\$26,141,521	-	-	-	\$25,238,688	\$902,833	3.6%
Oct-23	\$25,135,569	-	-	-	\$25,194,494	-\$58,926	-0.2%
Nov-23	\$22,203,902	-	-	-	\$21,450,424	\$753,478	3.5%
Dec-23	\$25,692,947	-	-	-	\$25,820,078	-\$127,131	-0.5%
Jan-24	\$22,643,792	-	-	-	\$23,351,072	-\$707,280	-3.0%
Feb-24	\$25,276,849	\$21,990,340	\$3,286,509	14.9%	\$22,241,818	\$3,035,031	13.6%
Mar-24	\$26,189,960	\$27,518,330	-\$1,328,370	-4.8%	\$27,794,098	-\$1,604,138	-5.8%
Apr-24	\$26,014,791	\$24,440,278	\$1,574,513	6.4%	\$24,440,572	\$1,574,219	6.4%
May-24	\$27,612,120	\$25,151,234	\$2,460,886	9.8%	\$25,451,894	\$2,160,226	8.5%
Jun-24	\$24,843,176	\$25,536,760	-\$693,584	-2.7%	\$25,949,778	-\$1,106,602	-4.3%
Jul-24	\$26,309,211	\$24,967,768	\$1,341,443	5.4%	\$25,295,088	\$1,014,123	4.0%
Aug-24	\$27,909,048	\$27,399,920	\$509,128	1.9%	\$27,664,148	\$244,900	0.9%
Sep-24	-	\$24,618,974	-	-	\$24,744,496	-	-
Oct-24	-	\$24,200,808	-	-	\$24,809,718	-	-
Cumulative Over/Under Forecast			\$7,150,524	3.9%		\$6,080,732	2.0%

DMV - Vehicle Title Fees

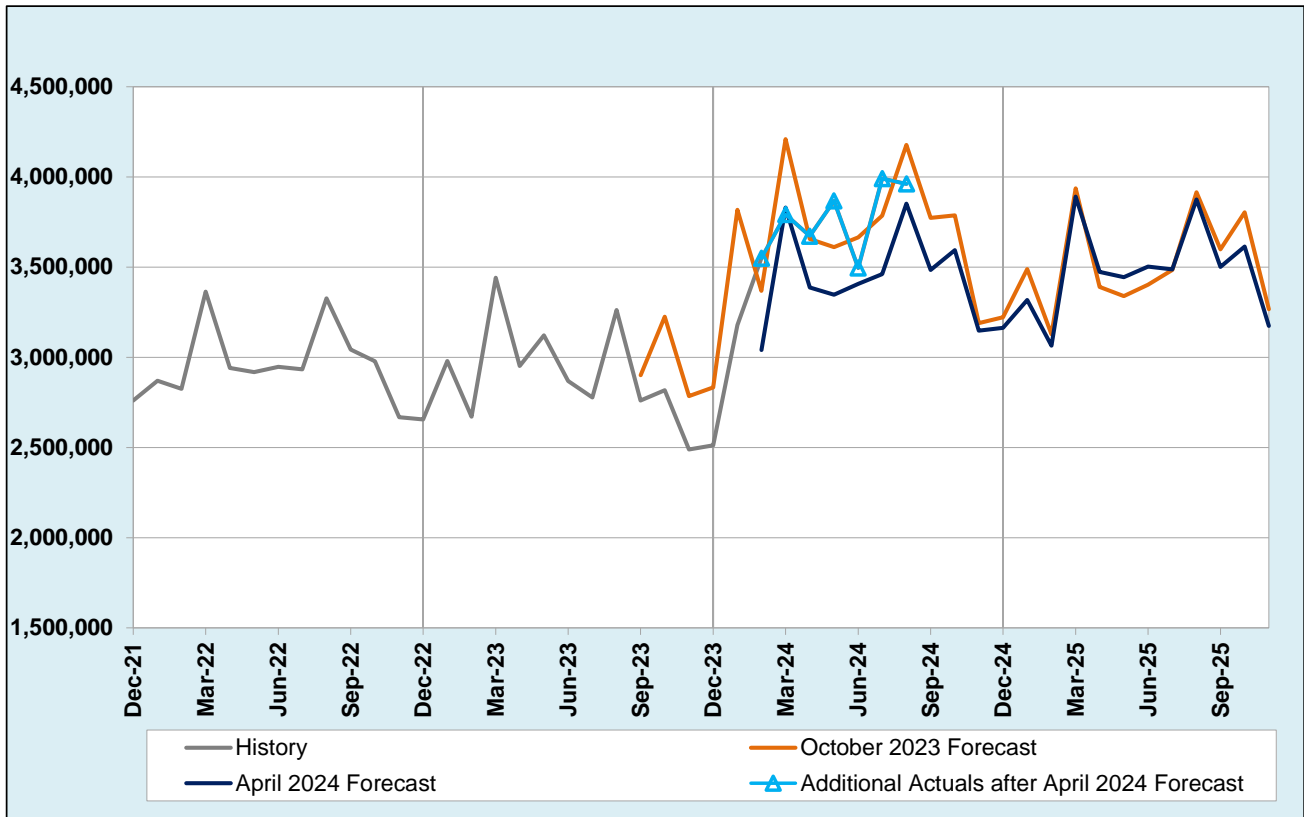
This includes: standard title, heavy vehicle title, salvage title, and ATV title. Snowmobile title is not included because the funds go to sno-parks.



Month	Actual	April 2024 Forecast	Over/Under Forecast (April 2024)	October 2023 Forecast	Over/Under Forecast (October 2023)	
Sep-23	\$8,565,609	-	-	\$8,121,003	\$444,606	5.5%
Oct-23	\$8,597,510	-	-	\$9,132,394	-\$534,884	-5.9%
Nov-23	\$7,043,296	-	-	\$7,639,016	-\$595,720	-7.8%
Dec-23	\$6,948,680	-	-	\$8,034,790	-\$1,086,110	-13.5%
Jan-24	\$7,617,789	-	-	\$7,691,901	-\$74,112	-1.0%
Feb-24	\$8,054,694	\$7,158,954	\$895,740	\$7,556,712	\$497,983	6.6%
Mar-24	\$8,477,463	\$8,950,639	-\$473,176	\$9,404,541	-\$927,078	-9.9%
Apr-24	\$9,258,136	\$7,910,344	\$1,347,793	\$8,392,870	\$865,266	10.3%
May-24	\$9,499,060	\$8,106,208	\$1,392,853	\$8,576,929	\$922,131	10.8%
Jun-24	\$8,106,525	\$7,914,933	\$191,592	\$8,338,503	-\$231,978	-2.8%
Jul-24	\$8,996,369	\$8,198,371	\$797,998	\$8,568,526	\$427,843	5.0%
Aug-24	\$9,098,031	\$8,996,527	\$101,504	\$9,342,888	-\$244,857	-2.6%
Sep-24	-	\$8,177,506	-	\$8,460,419	-	-
Oct-24	-	\$8,969,915	-	\$9,509,393	-	-
Cumulative Over/Under Forecast			\$4,254,303	6.9%	-\$536,910	-0.5%

DMV - Driver Fees (Highway Fund)

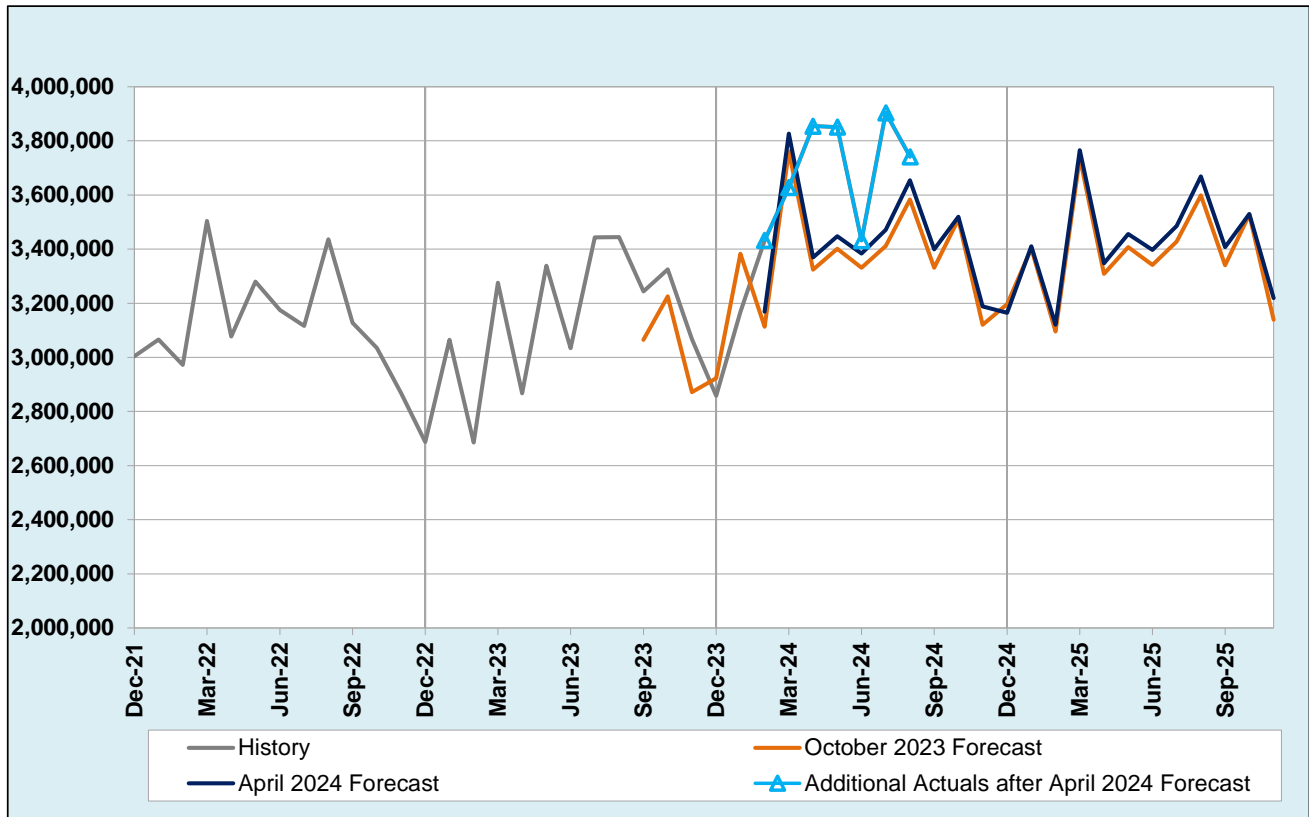
This includes: commercial and non-commercial driver licenses, commercial and non-commercial knowledge and skill tests, and driver endorsements.



Month	Actual	April 2024 Forecast	Over/Under Forecast (April 2024)		October 2023 Forecast	Over/Under Forecast (October 2023)	
Sep-23	\$2,761,004	-	-	-	\$2,901,273	-\$140,269	-4.8%
Oct-23	\$2,817,819	-	-	-	\$3,224,712	-\$406,893	-12.6%
Nov-23	\$2,489,024	-	-	-	\$2,785,000	-\$295,976	-10.6%
Dec-23	\$2,512,327	-	-	-	\$2,833,114	-\$320,787	-11.3%
Jan-24	\$3,179,061	-	-	-	\$3,817,834	-\$638,773	-16.7%
Feb-24	\$3,549,688	\$3,040,518	\$509,170	16.7%	\$3,368,965	\$180,723	5.4%
Mar-24	\$3,791,835	\$3,830,859	-\$39,024	-1.0%	\$4,209,558	-\$417,723	-9.9%
Apr-24	\$3,671,991	\$3,386,630	\$285,361	8.4%	\$3,655,424	\$16,567	0.5%
May-24	\$3,867,658	\$3,346,367	\$521,291	15.6%	\$3,611,596	\$256,062	7.1%
Jun-24	\$3,495,728	\$3,407,105	\$88,623	2.6%	\$3,664,801	-\$169,073	-4.6%
Jul-24	\$3,991,119	\$3,461,897	\$529,222	15.3%	\$3,785,071	\$206,048	5.4%
Aug-24	\$3,961,361	\$3,851,749	\$109,612	2.8%	\$4,178,066	-\$216,705	-5.2%
Sep-24	-	\$3,483,800	-	-	\$3,773,192	-	-
Oct-24	-	\$3,594,617	-	-	\$3,786,927	-	-
Cumulative Over/Under Forecast			\$2,004,255	7.6%		-\$1,946,799	-4.9%

Other DMV (Highway Fund)

This includes highway fees collected from: business regulations (highway fund only), trip permit fees, plate fees, record sales, and miscellaneous vehicle transactions (VIN inspection, surcharges, and penalties).



Month	Actual	April 2024 Forecast	Over/Under Forecast (April 2024)		October 2023 Forecast	Over/Under Forecast (October 2023)	
Sep-23	\$3,244,299	-	-	-	\$3,064,842	\$179,457	5.9%
Oct-23	\$3,325,305	-	-	-	\$3,225,096	\$100,209	3.1%
Nov-23	\$3,067,309	-	-	-	\$2,871,505	\$195,804	6.8%
Dec-23	\$2,858,098	-	-	-	\$2,922,924	-\$64,826	-2.2%
Jan-24	\$3,167,877	-	-	-	\$3,382,515	-\$214,638	-6.3%
Feb-24	\$3,432,439	\$3,168,479	\$263,961	8.3%	\$3,113,048	\$319,392	10.3%
Mar-24	\$3,628,020	\$3,826,826	-\$198,806	-5.2%	\$3,761,394	-\$133,374	-3.5%
Apr-24	\$3,854,952	\$3,369,091	\$485,861	14.4%	\$3,324,470	\$530,482	16.0%
May-24	\$3,850,892	\$3,447,734	\$403,158	11.7%	\$3,400,898	\$449,994	13.2%
Jun-24	\$3,431,943	\$3,383,796	\$48,146	1.4%	\$3,331,513	\$100,430	3.0%
Jul-24	\$3,904,033	\$3,471,048	\$432,986	12.5%	\$3,411,393	\$492,641	14.4%
Aug-24	\$3,741,702	\$3,654,746	\$86,956	2.4%	\$3,583,279	\$158,424	4.4%
Sep-24	-	\$3,398,726	-	-	\$3,331,364	-	-
Oct-24	-	\$3,519,843	-	-	\$3,510,541	-	-
Cumulative Over/Under Forecast			\$1,522,262	5.9%		\$2,113,993	5.1%