



SW Corner: wall will be and issue and mast arm pole footing above grade.

SE Corner: School comm network present. Mast arm pole footing above grade.

NE Corner: Fire hydrant in sidewalk. Cable TV vault.

Intersection: some existing conduits have old wiring that may be removed if conduits are intact.

SEALED

ORIGINALS SEALED BY:
SCOTT M. MANSUR
REG.# 56,267
CERTIFICATE EXPIRES: 12-31-2012

HAMTHORNE AVE/
HYACINTH STREET
CORRIDOR IMPROVEMENTS
FROM PORTLAND ROAD
TO
SILVERTON ROAD

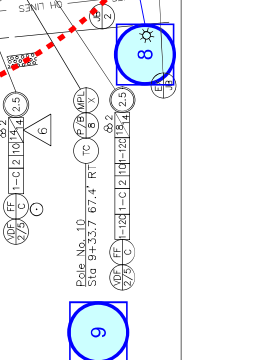
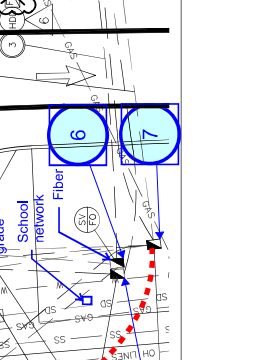
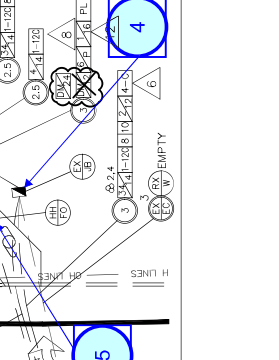
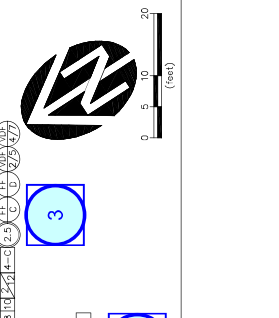
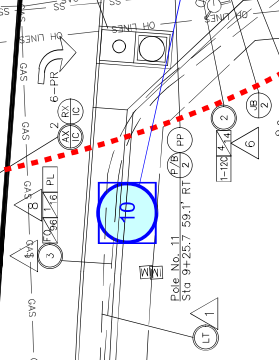
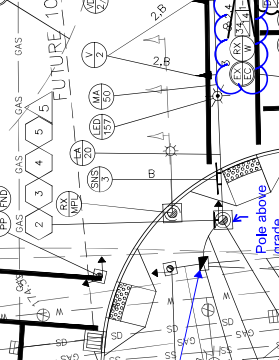
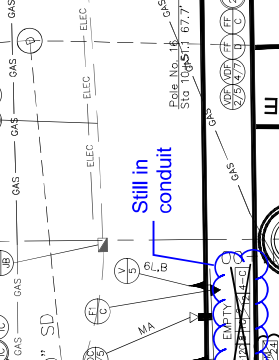
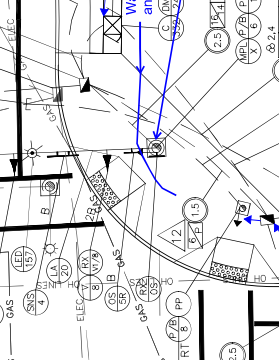
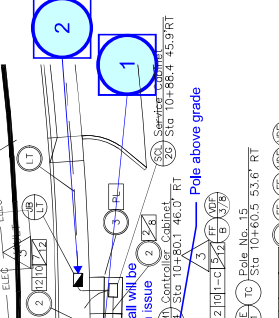
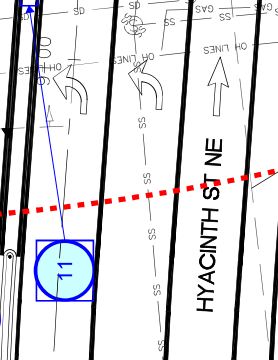
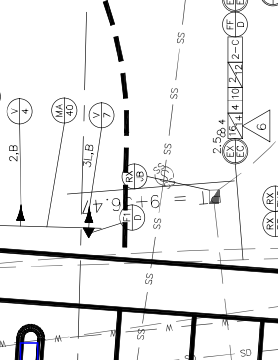
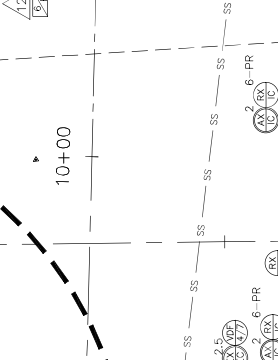
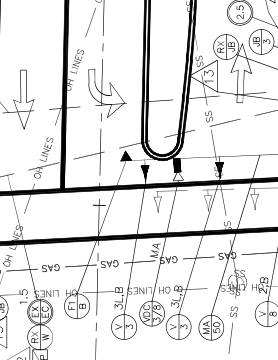
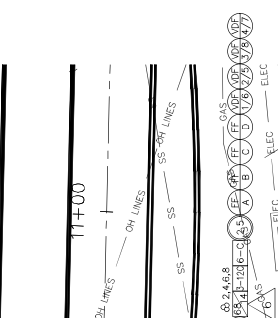
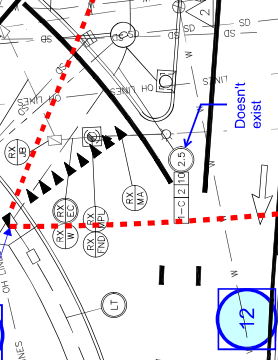
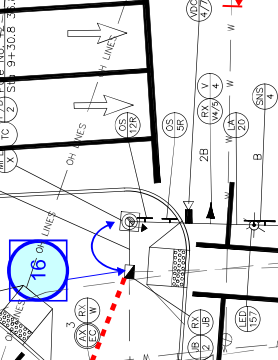
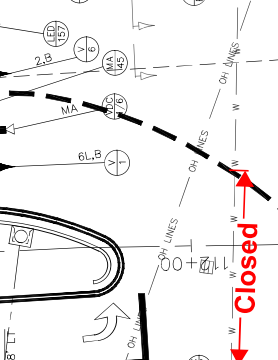
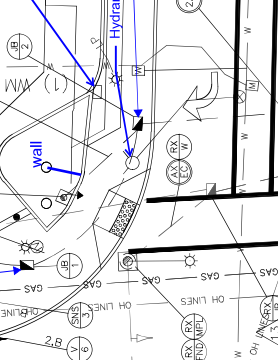
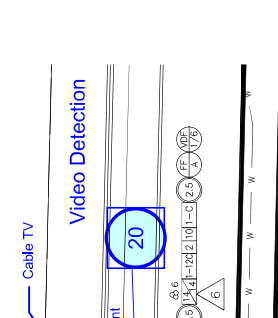
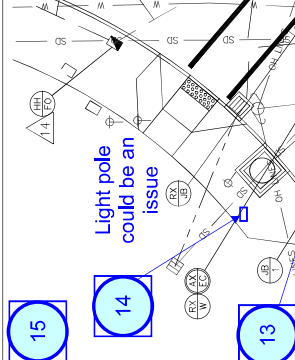
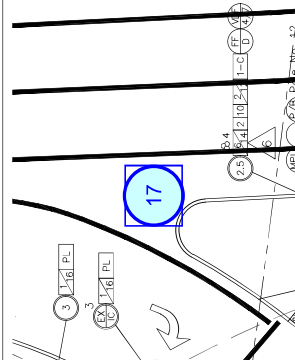
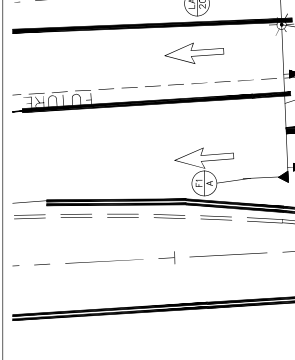
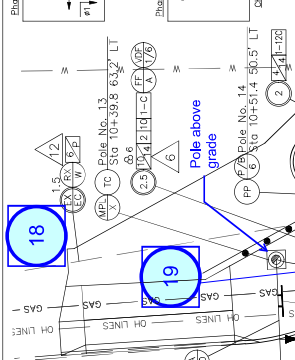
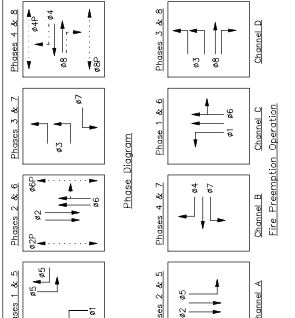
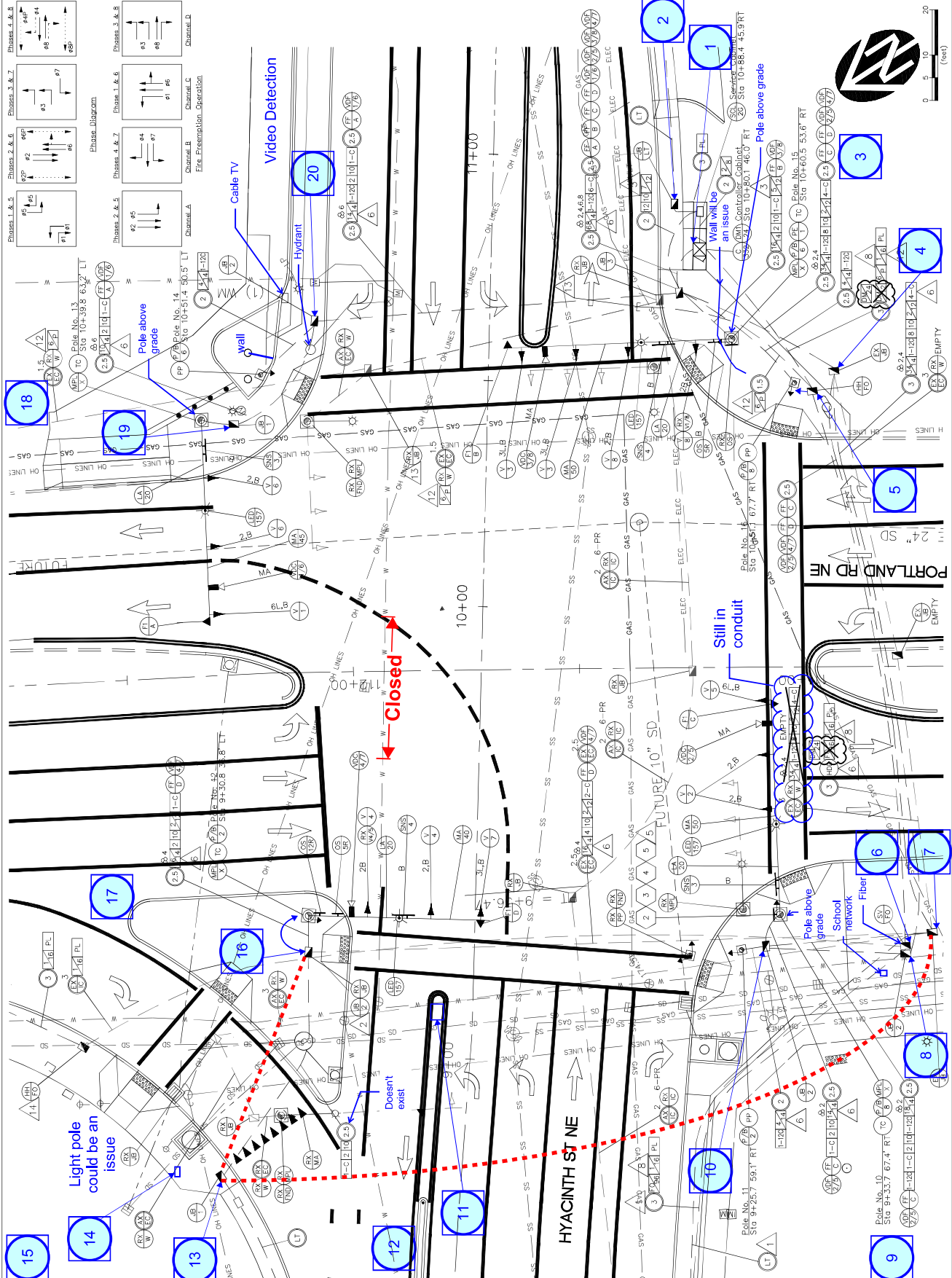
NO.	REVISIONS	DATE	BY
	DESCRIPTION		6204 JAK
	ASBUILT		

PROJECT NO.: 709598
SURVEY: BARKER/VALSON SURVEYING
HORIZ. SCALE: AS SHOWN
VERT. SCALE: N/A
DRAWN: ANS CAD
CHECKED: SMM AMK
APPROVED: SMM
DKS PROJECT: P09122

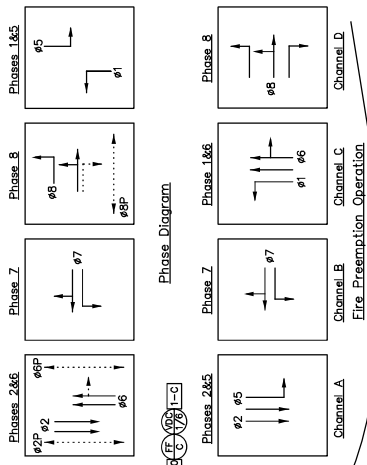
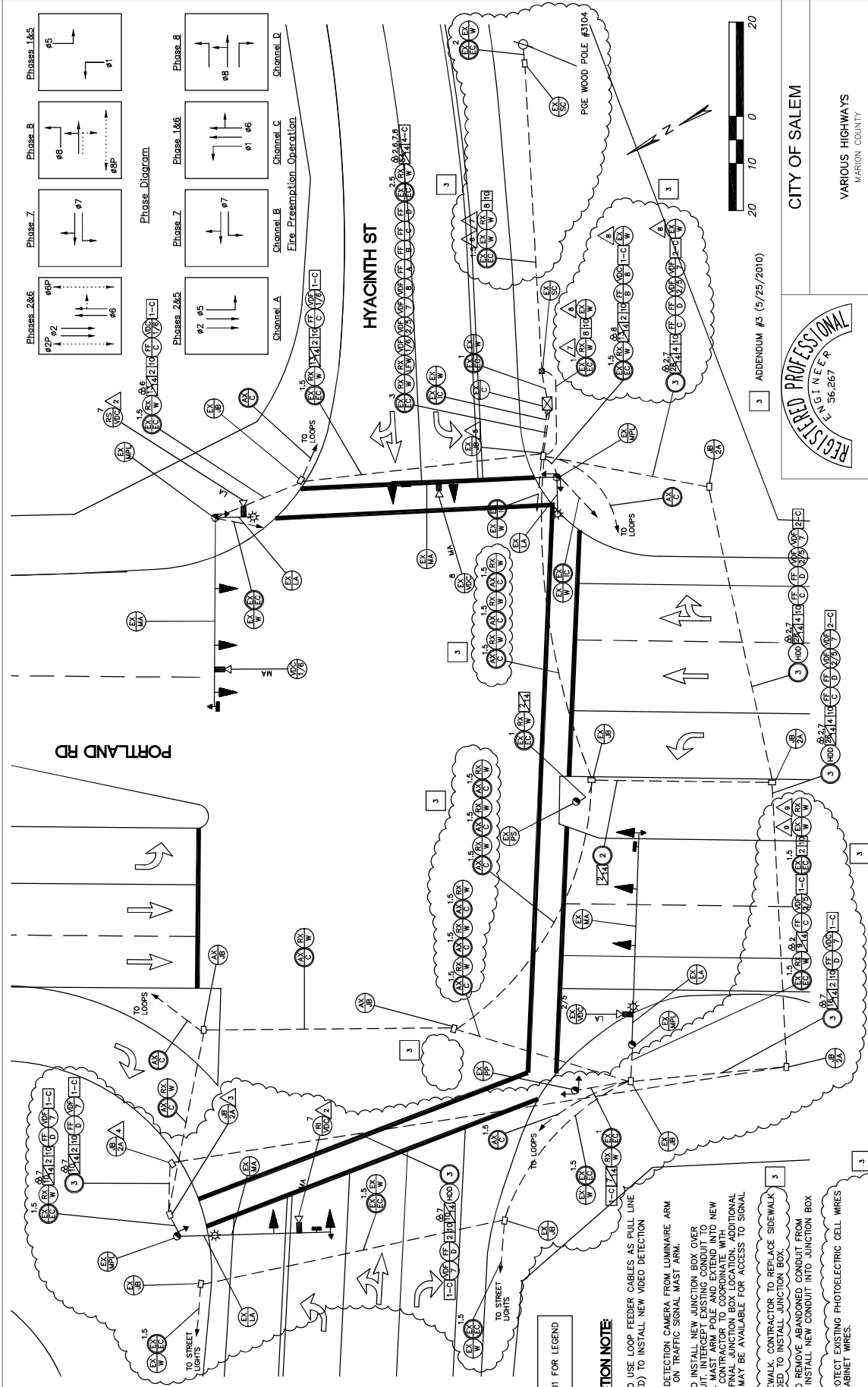
SHEET TITLE
PORTLAND RD NE/
HYACINTH ST NE
TRAFFIC SIGNAL PLAN

TS-04

SHEET 112 OF 163



PN 709520



SEE SHEET TS-01 FOR LEGEND

CONSTRUCTION NOTE

1. CONTRACTOR TO USE LOOP FEEDER CABLES AS PULL LINE (TO BE REMOVED) TO INSTALL NEW VIDEO DETECTION CABLES.
2. REMOVE VIDEO DETECTION CAMERA FROM LUMINAIRE ARM AND REINSTALL ON TRAFFIC SIGNAL MAST ARM.
3. CONTRACTOR TO INSTALL NEW JUNCTION BOX OVER EXISTING TRAFFIC SIGNAL MAST AND EXTEND INTO NEW JUNCTION BOX. CONTRACTOR TO COORDINATE WITH ENGINEER FOR FINAL JUNCTION BOX LOCATION. ADDITIONAL CONDUIT STUB MAY BE AVAILABLE FOR ACCESS TO SIGNAL PULL.
4. INSTALL IN SIDEWALK. CONTRACTOR TO REPLACE SIDEWALK PANEL AS NEEDED TO INSTALL JUNCTION BOX.
5. CONTRACTOR TO REMOVE ABANDONED CONDUIT FROM JUNCTION BOX. INSTALL NEW CONDUIT INTO JUNCTION BOX AS SHOWN.
6. RETAIN AND PROTECT EXISTING PHOTOELECTRIC CELL WIRES AND SERVICE CABINET WIRES.
7. REMOVE EXISTING ILLUMINATION WIRES.
8. RETAIN AND PROTECT EXISTING PHOTOELECTRIC CELL WIRES.
9. REMOVE EXISTING ILLUMINATION WIRES TO PGE SERVICE CABINET. RETAIN AND PROTECT EXISTING WIRES THAT HEAD TO LUMINAIRES WEST OF THE INTERSECTION.

GENERAL NOTE

1. CONTRACTOR TO REMOVE ALL EXISTING LOOP FEEDER CABLE FROM THIS INTERSECTION.

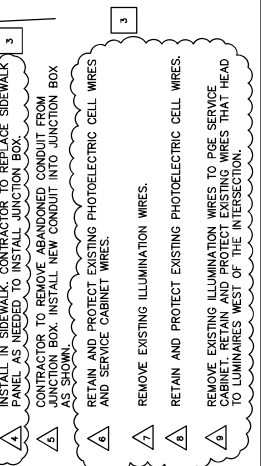
REGISTERED PROFESSIONAL ENGINEER
 JULY 9, 2007
 SCOTT M. WANSUR
 OREGON
 56,267
 EXPRES: DEC. 31, 2012

DKS Associates
 TRANSPORTATION SOLUTIONS
 117 Commercial S. NE, Suite 301
 Salem, Oregon 97301
 Telephone: (503) 384-8773
 Fax: (503) 384-8701

CITY OF SALEM
 VARIOUS HIGHWAYS
 MARION COUNTY
 Design Team Leader - SNMA
 Designed By - KW/MWS
 Drafted By - DKS/CAD
 TRAFFIC SIGNAL MODIFICATION PLAN
 PORTLAND RD/HYACINTH ST
 SHEET NO. TS-06



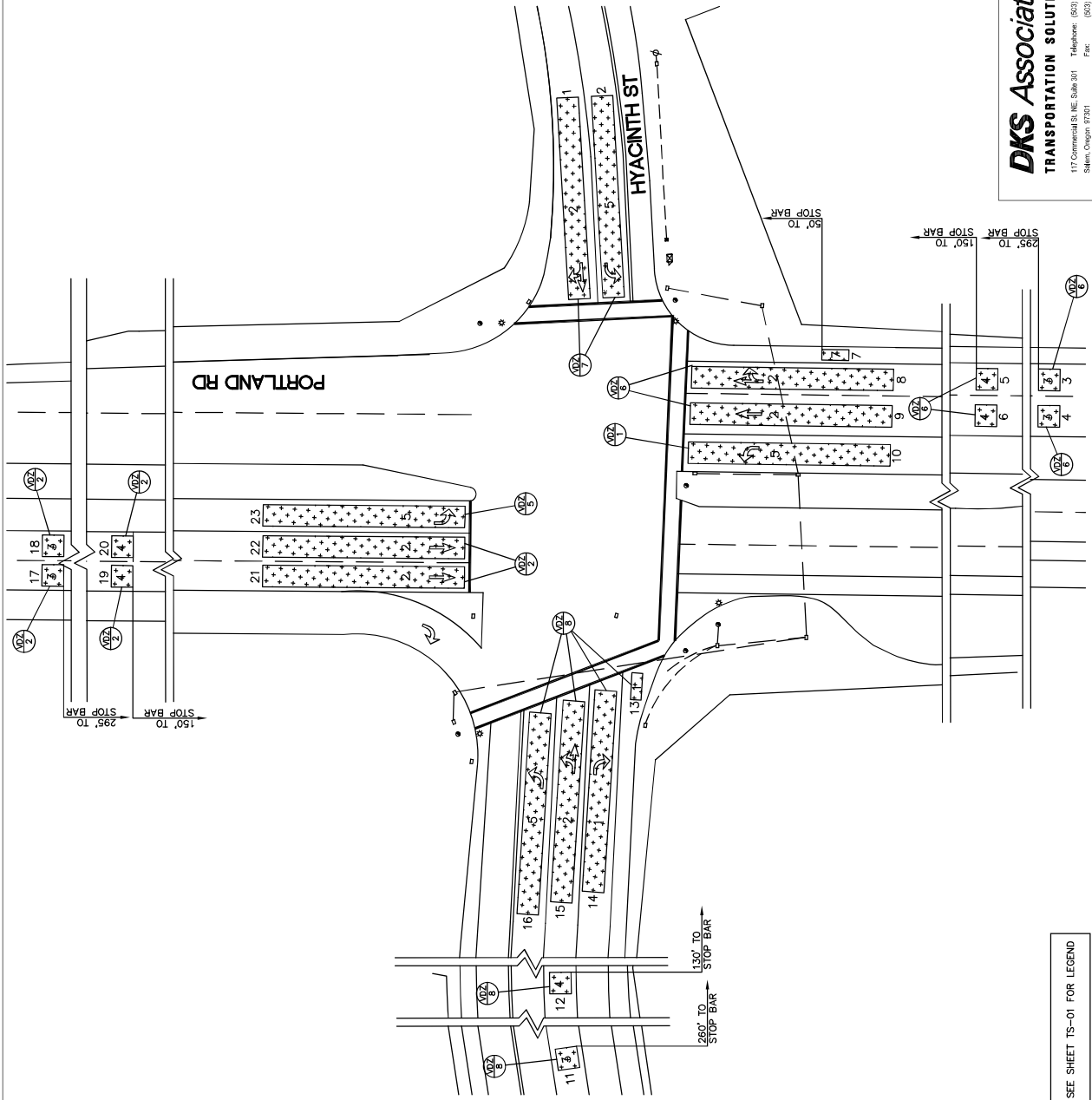
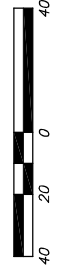
APPENDUM #3 (5/25/2010)



VIDEO DETECTOR WIRING DIAGRAM

VIDEO ZONE	PHASE NO.	FUNCTION	INLET FILE	INLET DEVICE
			IN CONTROLLER	VIDEO CARD
1	7	C.E.C.T	J5U	VP30.1
2	7	C.E.C.T	J5L	VP30.1
3	6	C.E.C.T	J2U	VP30.1
4	6	C.E.C.T	J2L	VP30.1
5	6	C.E.C.T	J2U	VP30.1
6	6	C.E.C.T	J2L	VP30.1
7	6	C.E.C.T	J3U	VP30.1
8	6	C.E.C.T	J3L	VP30.1
9	6	C.E.C.T	J3U	VP30.1
10	6	C.E.C.T	J3L	VP30.1
11	1	C.E.C.T	J1U	EXTENDER CARD
12	1	C.E.C.T	J1L	EXTENDER CARD
13	8	C.E.C.T	J8U	VP30.1
14	8	C.E.C.T	J8L	VP30.1
15	8	C.E.C.T	J7U	VP30.1
16	8	C.E.C.T	J7L	VP30.1
17	2	C.E.C.T	J2U	VP30.1
18	2	C.E.C.T	J2L	VP30.1
19	2	C.E.C.T	J2U	VP30.1
20	2	C.E.C.T	J2L	VP30.1
21	2	C.E.C.T	J3U	VP30.1
22	2	C.E.C.T	J3L	VP30.1
23	5	C.E.C.T	J1U	EXTENDER CARD

PN 709520



SEE SHEET TS-01 FOR LEGEND



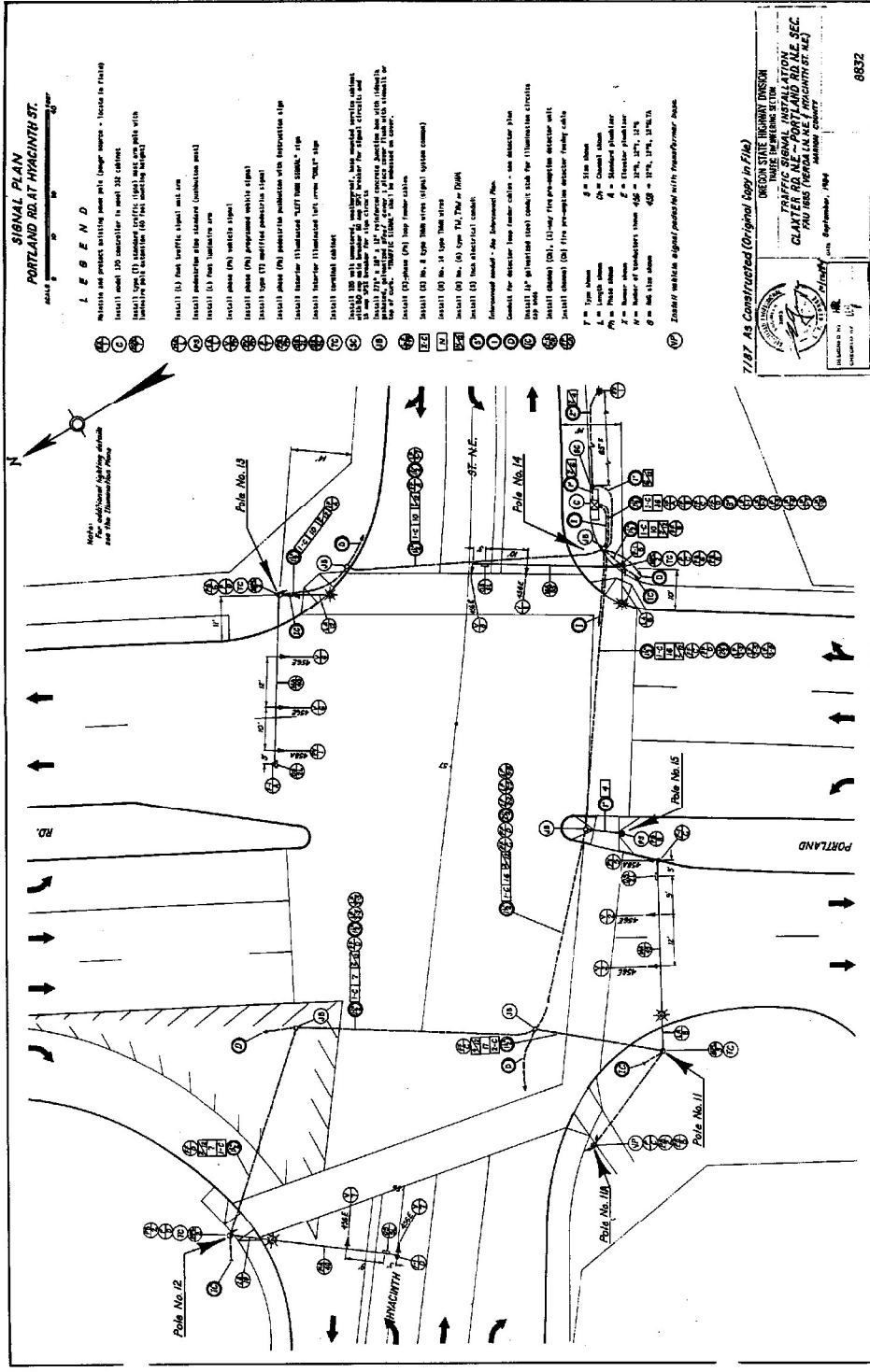
REGISTRATION NO. 56,267
 JULY 9, 2007
 SCOTT M. MANSOUR
 ENGINEER
 OREGON

EXPIRES: DEC. 31, 2012

DKS Associates
 TRANSPORTATION SOLUTIONS
 117 Commercial St., NE, Suite 301
 Salem, Oregon 97301
 Telephone: (503) 354-4773
 Fax: (503) 354-4701

CITY OF SALEM
 VARIOUS HIGHWAYS
 MARION COUNTY
 Design Team Leader - SNMA
 Designed By - BKW/MS
 Drafted By - DKS/CAD

VIDEO DETECTION PLAN
 PORTLAND RD/HYACINTH ST
 SHEET NO. TS-07



SIGNAL PLAN
PORTLAND RD AT HYACINTH ST.

LEGEND

① Motorist and protect walking from left (single) - locate in facing

② Motorist and protect walking from right (single) - locate in facing

③ Motorist and protect walking from both (double) - locate in facing

④ Motorist and protect walking from both (double) - locate in facing

⑤ Motorist and protect walking from both (double) - locate in facing

⑥ Motorist and protect walking from both (double) - locate in facing

⑦ Motorist and protect walking from both (double) - locate in facing

⑧ Motorist and protect walking from both (double) - locate in facing

⑨ Motorist and protect walking from both (double) - locate in facing

⑩ Motorist and protect walking from both (double) - locate in facing

⑪ Motorist and protect walking from both (double) - locate in facing

⑫ Motorist and protect walking from both (double) - locate in facing

⑬ Motorist and protect walking from both (double) - locate in facing

⑭ Motorist and protect walking from both (double) - locate in facing

⑮ Motorist and protect walking from both (double) - locate in facing

⑯ Motorist and protect walking from both (double) - locate in facing

⑰ Motorist and protect walking from both (double) - locate in facing

⑱ Motorist and protect walking from both (double) - locate in facing

⑲ Motorist and protect walking from both (double) - locate in facing

⑳ Motorist and protect walking from both (double) - locate in facing

㉑ Motorist and protect walking from both (double) - locate in facing

㉒ Motorist and protect walking from both (double) - locate in facing

㉓ Motorist and protect walking from both (double) - locate in facing

㉔ Motorist and protect walking from both (double) - locate in facing

㉕ Motorist and protect walking from both (double) - locate in facing

㉖ Motorist and protect walking from both (double) - locate in facing

㉗ Motorist and protect walking from both (double) - locate in facing

㉘ Motorist and protect walking from both (double) - locate in facing

㉙ Motorist and protect walking from both (double) - locate in facing

㉚ Motorist and protect walking from both (double) - locate in facing

㉛ Motorist and protect walking from both (double) - locate in facing

㉜ Motorist and protect walking from both (double) - locate in facing

㉝ Motorist and protect walking from both (double) - locate in facing

㉞ Motorist and protect walking from both (double) - locate in facing

㉟ Motorist and protect walking from both (double) - locate in facing

㊱ Motorist and protect walking from both (double) - locate in facing

㊲ Motorist and protect walking from both (double) - locate in facing

㊳ Motorist and protect walking from both (double) - locate in facing

㊴ Motorist and protect walking from both (double) - locate in facing

㊵ Motorist and protect walking from both (double) - locate in facing

㊶ Motorist and protect walking from both (double) - locate in facing

㊷ Motorist and protect walking from both (double) - locate in facing

㊸ Motorist and protect walking from both (double) - locate in facing

㊹ Motorist and protect walking from both (double) - locate in facing

㊺ Motorist and protect walking from both (double) - locate in facing

① Pole No. 12

② Pole No. 13

③ Pole No. 14

④ Pole No. 15

⑤ Pole No. 16

⑥ Pole No. 17

⑦ Pole No. 18

⑧ Pole No. 19

⑨ Pole No. 20

⑩ Pole No. 21

⑪ Pole No. 22

⑫ Pole No. 23

⑬ Pole No. 24

⑭ Pole No. 25

⑮ Pole No. 26

⑯ Pole No. 27

⑰ Pole No. 28

⑱ Pole No. 29

⑲ Pole No. 30

⑳ Pole No. 31

㉑ Pole No. 32

㉒ Pole No. 33

㉓ Pole No. 34

㉔ Pole No. 35

㉕ Pole No. 36

㉖ Pole No. 37

㉗ Pole No. 38

㉘ Pole No. 39

㉙ Pole No. 40

㉚ Pole No. 41

㉛ Pole No. 42

㉜ Pole No. 43

㉝ Pole No. 44

㉞ Pole No. 45

㉟ Pole No. 46

㊱ Pole No. 47

㊲ Pole No. 48

㊳ Pole No. 49

㊴ Pole No. 50

㊵ Pole No. 51

㊶ Pole No. 52

㊷ Pole No. 53

㊸ Pole No. 54

㊹ Pole No. 55

㊺ Pole No. 56

㊻ Pole No. 57

㊼ Pole No. 58

㊽ Pole No. 59

㊾ Pole No. 60

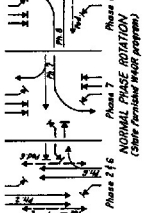
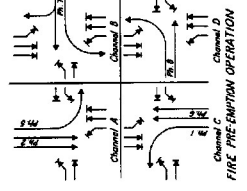
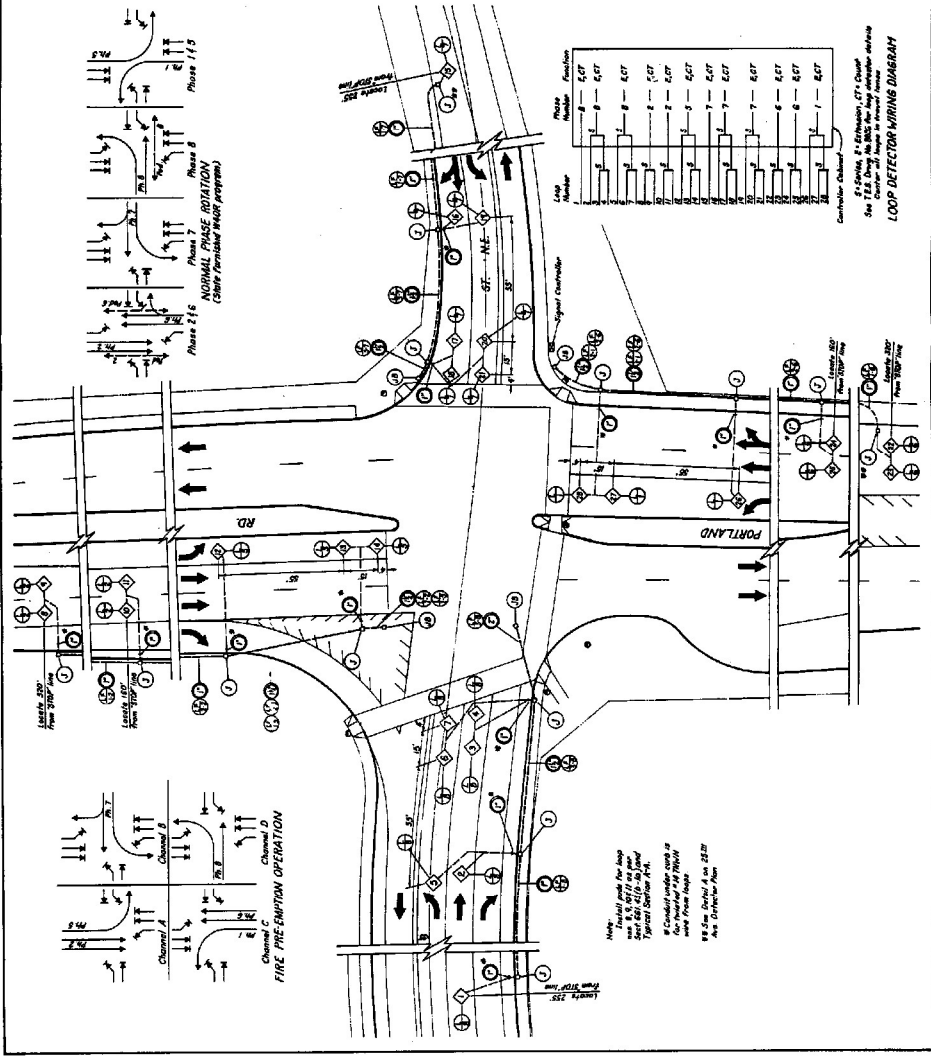
㊿ Pole No. 61

7.107. As Constructed (Original Copy in File)

OREGON STATE HIGHWAY DIVISION
 TRAFFIC SIGNAL INSTALLATION
 CLAYTON SEC. (PORTLAND RD AT HYACINTH ST.)
 September, 1968

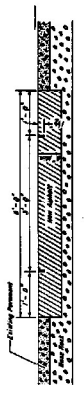
8832

**DETECTOR PLAN
PORTLAND RD. AT HYACINTH ST.**



LEGEND

- ① Section box - see typical plan
- ② Install 4" x 4" x 1/2" rebar/epoxy in lateral cast from loop within junction box
- ③ Install 1/2" x 1/2" x 1/2" stainless steel detector loop
- ④ Install 100-ohm (1%) loop resistor cables
- ⑤ Install 100 ohm (1%) resistor
- ⑥ 2" x 4" Rebar Shown
- ⑦ 4" x 8" Slab Shown
- ⑧ 4" x 8" Slab Shown
- ⑨ 4" x 8" Slab Shown



**TYPICAL SECTION A-A
DETECTOR LOOP PAD FOR DETERIORATED PAVEMENT**

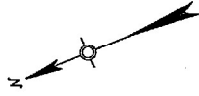
Install 4" x 4" x 1/2" rebar/epoxy in lateral cast from loop within junction box. This bar is to be placed in the concrete above the loop and extend to the edge of the concrete. The bar should be placed in the concrete above the loop and extend to the edge of the concrete. The bar should be placed in the concrete above the loop and extend to the edge of the concrete.

Notes:
 1. Install loop pad per loop and resistor cable per typical section A-A.
 2. Concrete under loop at junction box shall be placed and cured prior to loop installation.
 3. See Detail A on 2202 Area Distribution Plan.

Loop Number	Phase Function
1	6-ET
2	6-ET
3	6-ET
4	6-ET
5	6-ET
6	6-ET
7	6-ET
8	6-ET
9	6-ET
10	6-ET
11	6-ET
12	6-ET
13	6-ET
14	6-ET
15	6-ET
16	6-ET
17	6-ET
18	6-ET
19	6-ET
20	6-ET
21	6-ET
22	6-ET
23	6-ET
24	6-ET
25	6-ET
26	6-ET
27	6-ET
28	6-ET
29	6-ET
30	6-ET
31	6-ET
32	6-ET
33	6-ET
34	6-ET
35	6-ET
36	6-ET
37	6-ET
38	6-ET
39	6-ET
40	6-ET
41	6-ET
42	6-ET
43	6-ET
44	6-ET
45	6-ET
46	6-ET
47	6-ET
48	6-ET
49	6-ET
50	6-ET

7/87 AS Constructed (Original Copy in File)
 DIVISION OF TRANSPORTATION
 CLATTER RD. NE - PORTLAND RD. NE SEC.
 FAU 188 (VERSION IN FILE 7/11/1987 BY NC)
 8/1/87
 8833

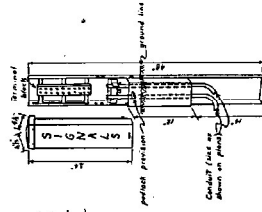
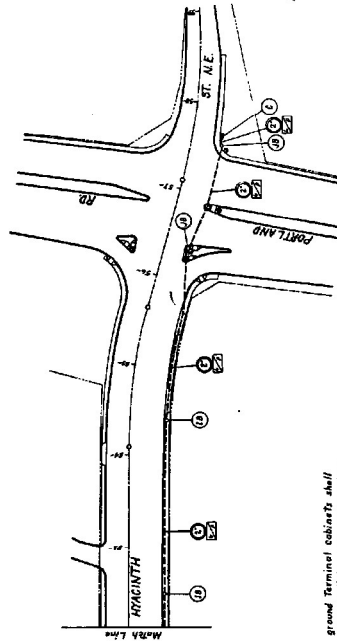
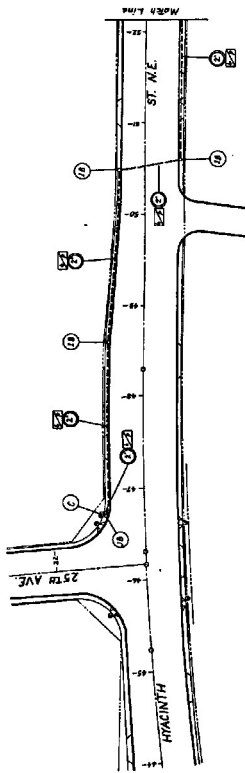
INTERCONNECT PLAN



LEGEND

- (1) Local signal controller - see signal plan
- (2) Junction box - see signal plan

- (3) Signal (S) - see electrical cabinet
- (4) Signal (S) - see electrical cabinet
- (5) Stop sign



ABOVE-GROUND TERMINAL CABINET
 Consult local or State or Federal Highway Dept. for details.

NOTE: Above ground terminal cabinets shall be used for splicing and may replace junction box at splice points.

UNION STATE WORKS DIVISION
 1501 15th Avenue, S.W.
 TRAFFIC SIGNAL INSTALLATION
 CLAXTER RD. N.E. - PORTLAND, OREGON
 PAUL HESS TRAFFIC SIGNALS, INC.
 WASHINGTON COUNTY, OREGON
 September 1964








DESIGNED BY: [Signature]
 CHECKED BY: [Signature]

1/4" = 1'-0" 8834

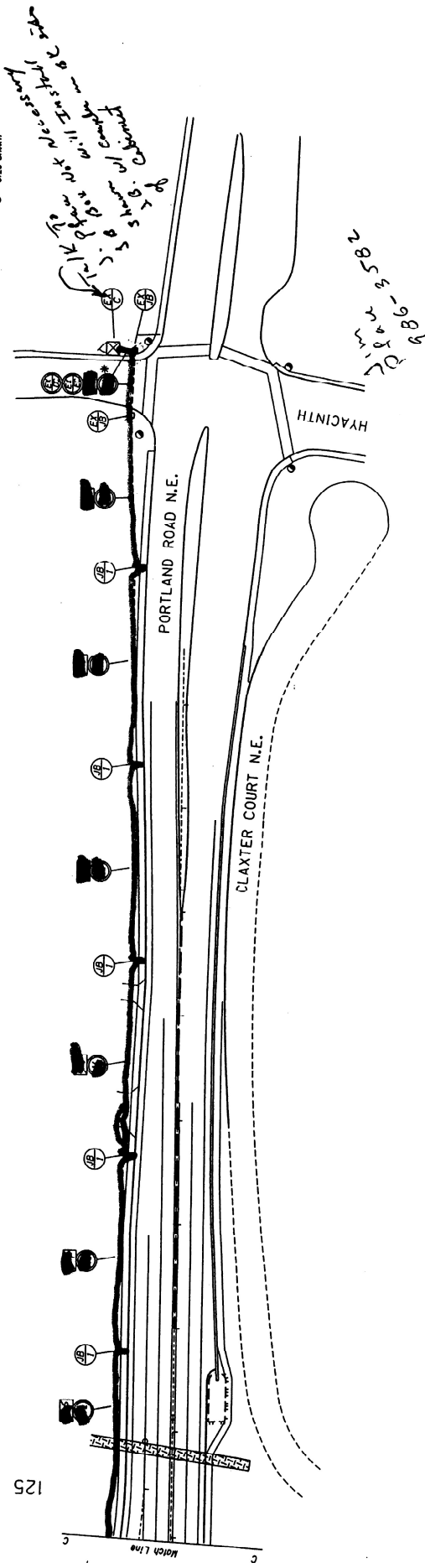
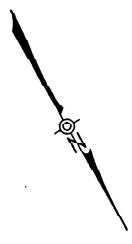
INTERCONNECT PLAN
S.B. 1-5 OFF RAMP ON PORTLAND RD. N.E. TO HYACINTH ST.
HWT. 1E. M.P. 46.24 - 46.47



SCALE: 1" = 40' FEET

LEGEND

-  Retain and protect existing controller (furnish note 400 MOBEU)
-  Retain and protect existing electrical conduit
-  Install 17"x10"x1/2" (inch) dimension precast high density polymer concrete junction box with galvanized pipe steel cover
-  Install 1/2" (inch) twisted pair interconnect cable
-  Install 1/2" (inch) electrical conduit
-  Retain and protect existing junction box
-  Retain and protect existing detector conduit

A = Number shown
 S = Size shown



		OREGON DEPARTMENT OF TRANSPORTATION TRAFFIC MANAGEMENT SECTION	
		S.P.T.C. - SILVERTON ROAD SEC. PACIFIC HIGHWAY MARION COUNTY	
DATE: February 1996		O.S.T.O.R. 10905	
DESIGNED BY: J.F. COLE CHECKED BY: J.F. COLE DRAWN BY: J.F. COLE	EXP. 12/31/96	DATE: February 1996	