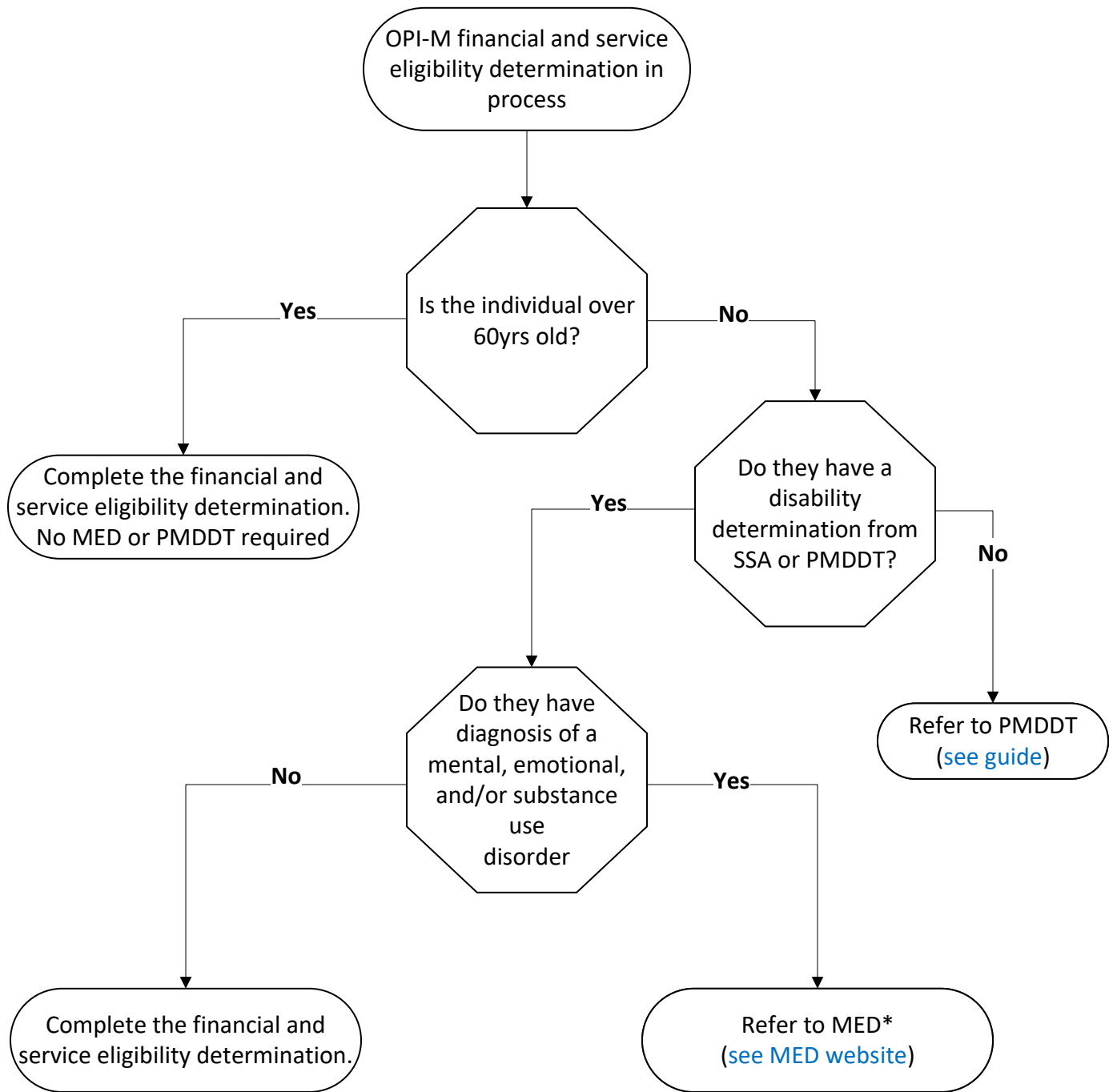


# Oregon Project Independence – Medicaid (OPI-M)

## When to Make a Presumptive Medicaid Disability Determination Team (PMDDT) or Mental or Emotional Disorder (MED) Referral



\*Individuals applying for OPI-M are referred to MED once their financial eligibility has been determined and they have been assessed with a service priority level (SPL) of 1-18.

Eligibility Case Managers (ECM) will follow the same process for referring cases to MED as they would for a long-term services and supports (LTSS) case. The MED referral form has been updated to include a box which can be checked to indicate the referral is for an OPI-M case.