

Clatsop State Forest

Trail Guide



Be Prepared

- ◆ Let someone know your plans
- ◆ Lock your vehicle
- ◆ Read trailhead signs
- ◆ Pack plenty of water

Protect the Forest

- ◆ Stay on designated trails
- ◆ Share the trail
- ◆ Pack it in, pack it out
- ◆ Check current fire condition

Drive Safely

Always use caution when driving on single-lane gravel roads in the forest. Drive slowly and watch for log and dump truck traffic. Remember; the Clatsop is a working forest. And always be prepared for changing trail and weather conditions, steep terrain and loose rock.



Oregon Department of Forestry
Astoria District
92219 Highway 202
Astoria, OR. 97103

Phone: 503-325-5451
Fax: 503-325-2756
www.oregon.gov/odf

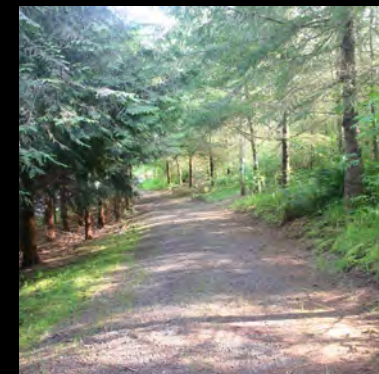
Highway 202

Astoria District Office

Demonstration Forest
and Hiking Trails



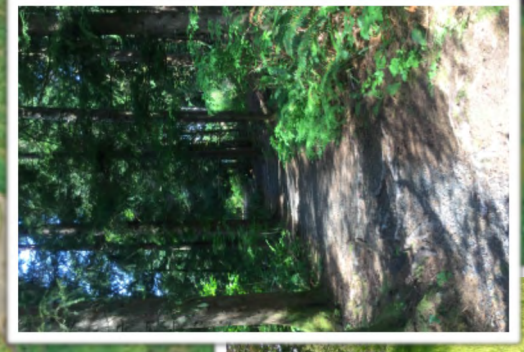
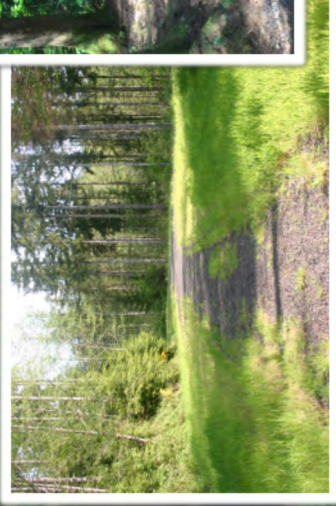
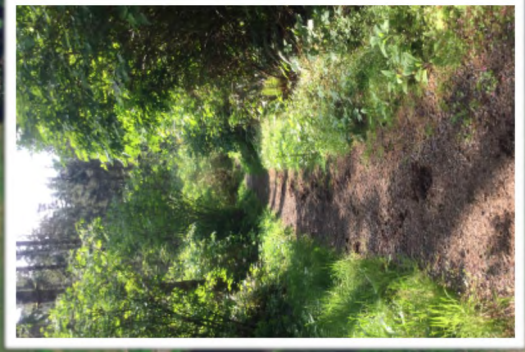
Astoria District



Located at the Astoria District Office, the Demonstration Forest, C.J. Reed Arboretum, and Hiking Trail system provides a great spot for a day hike close to town. A one mile loop and several secondary loop systems take you through a variety of forested settings. These non-motorized trails are open to hikers, bicycles, and horse riders. The proximity to Astoria has made these trails a popular dog walking spot during the day time hours. Bring some snacks and your kids to have lunch at one of the two picnic tables. A great location to get some fresh air and enjoy the outdoors.

Access: Travel Highway 202 to Milepost 4. Parking spots are located on the north side of the highway. Follow signs to the Demonstration Forest & Hiking Trail.

CLATSOP STATE FOREST TRAIL MAP



Legend

- Trailhead (TH icon)
- Highway Mileposts (MAP 4 icon)
- State Forestry Ownership (dashed white line)
- Paved Road (brown line)
- Rocked Road (yellow line)
- Trails
 - Easy (green dashed line)