

Wildfire Hazard Map

Oregon Board of Forestry

September 4, 2024



Overview

- Purpose
- Key Rule Section review
- Public comment summary
- Draft Hazard Map comment summary
- Department's Recommendation to the Board



Senate Bill 80 (2023)

- Largely composed trends and issues identified from 2022 public comments and the original appeals process.
- Statutory changes:
 - Identified purpose of the map
 - Inform Oregon residents and property owners about their wildfire exposure by providing transparent and science-based information.
 - Assist in prioritizing fire-adaption resources and funding for the most vulnerable locations.
 - To Identify where defensible space standards and home hardening codes will apply.
 - Change 5 “risk” classes to 3 “hazard classes”
 - Changed who receives notification letters
 - Requires a robust community engagement process
 - Changed the appeals process from Department designed to a contested case hearing



Rule Section Review

- Agency Procedural Rules – OAR 629-001-0000 to 0057
 - Modified to reflect inclusion of the hazard map as a contested case, and alignment with changes to the Administrative Procedures Act throughout.
- Wildfire Hazard Rating – OAR 629-044-1021
 - Modified to reflect 3 classes.
- Irrigated Agriculture – OAR 629-044-1026
 - Added rule directing OSU to consider adjustments for areas identified as irrigated agriculture.
- Notifications – OAR 629-044-1031
 - Notifications required for tax lots in high hazard **and** the wildland-urban interface.
- Appeals – OAR 629-044-1041
 - Modified to reflect the process change to a contested case hearing.



Irrigated Agriculture Scale

(A) Irrigation Frequency Criteria	(B) Total Acres Which Meet Irrigation Frequency Criteria	(C) Acres Identified as Agriculture and Which Meet Irrigation Frequency Criteria	(D) Total # Parcels in High Hazard	(E) # Parcels in both High Hazard and WUI
Irrigated \geq 1 of 5 years	3,103,791	2,721,916	159,314	100,284
Irrigated \geq 2 of 5 years	2,809,347	2,512,023	159,962	100,774
Irrigated \geq 3 of 5 years	2,529,511	2,287,902	160,473	101,149
Irrigated \geq 4 of 5 years	2,225,920	2,030,532	160,931	101,512
Irrigated \geq 5 of 5 years	1,714,688	1,580,454	161,710	102,181
No Irrigation Adjustment	--	--	184,322	104,521



OAR Public Comment Summary

- The Department conducted three virtual hearings on the administrative rules.
- 112 comments received
 - 25 verbal
 - 87 written
- Rule specific comments:
 - 629-001-0000 – Regarding the removal of listed entities to notify for rulemaking.
 - 629-044-1026 – Comments supported alignment of any irrigated agriculture considerations with current water rights law. Additional comments were made regarding data sources to consider.
- Additional comments were received outside of the scope of the proposed rules, consisting of mitigation credit, federal land management, government overreach, insurance, property values, buying and selling of homes, development concerns, and statewide removal of local adoption of higher standards

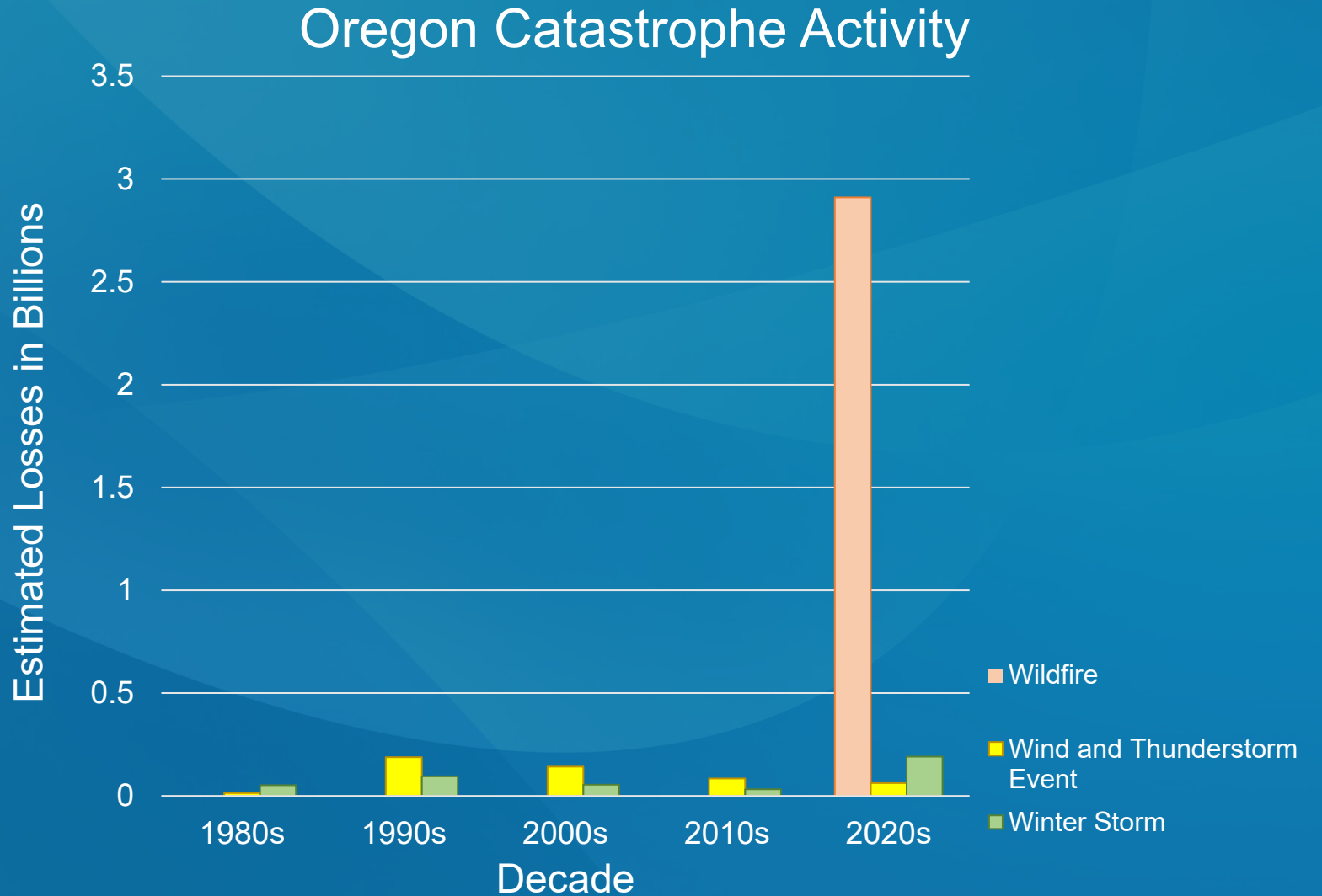


Draft Hazard Comment Summary

- Draft Wildfire Hazard Map uploaded to the Oregon Explorer
- Approximately 2000 comments received
- Key Concerns
 - Insurance – 37%
 - Already a Firewise Community – 18%
 - Defensible Space/Building Code comments – 18%
 - Irrigation – 17%
 - Home value effects – 11%
 - Federal Land Management – 10%



Oregon's insurance market





Agency partners



Division of
Financial
Regulation

Department of Consumer
and Business Services



Building
Codes
Division

Department of Consumer
and Business Services



2024 Wildfire Hazard Map Timeline

MARCH

March to April: Rulemaking Advisory Committee input

APRIL

April to August: County review for anomalies

MAY

JUNE

June: Open House meetings in high hazard communities
June 5 & 6: Board of Forestry may direct ODF to proceed with rule adoption process

JULY

July 1 to August 15: Public comment period on draft rules may be sent to maprules@odf.oregon.gov.
July 15 to August 15: Public input on draft map may be emailed to hazardmap@odf.oregon.gov.

AUGUST

SEPTEMBER

September 4&5: Board of Forestry considers adoption of rules package

OCTOBER

October 1: Tax-lot level Hazard Assessments posted to Explorer. Notifications sent to property owners in high-hazard zones and within the wildland-urban interface (WUI). Appeals process initiated for those receiving notifications and those that haven't.
October 15 until complete: Process appeals and hold hearings

NOVEMBER

DECEMBER

December 1: Appeals process closes, map is final for those not appealing

Recommendation

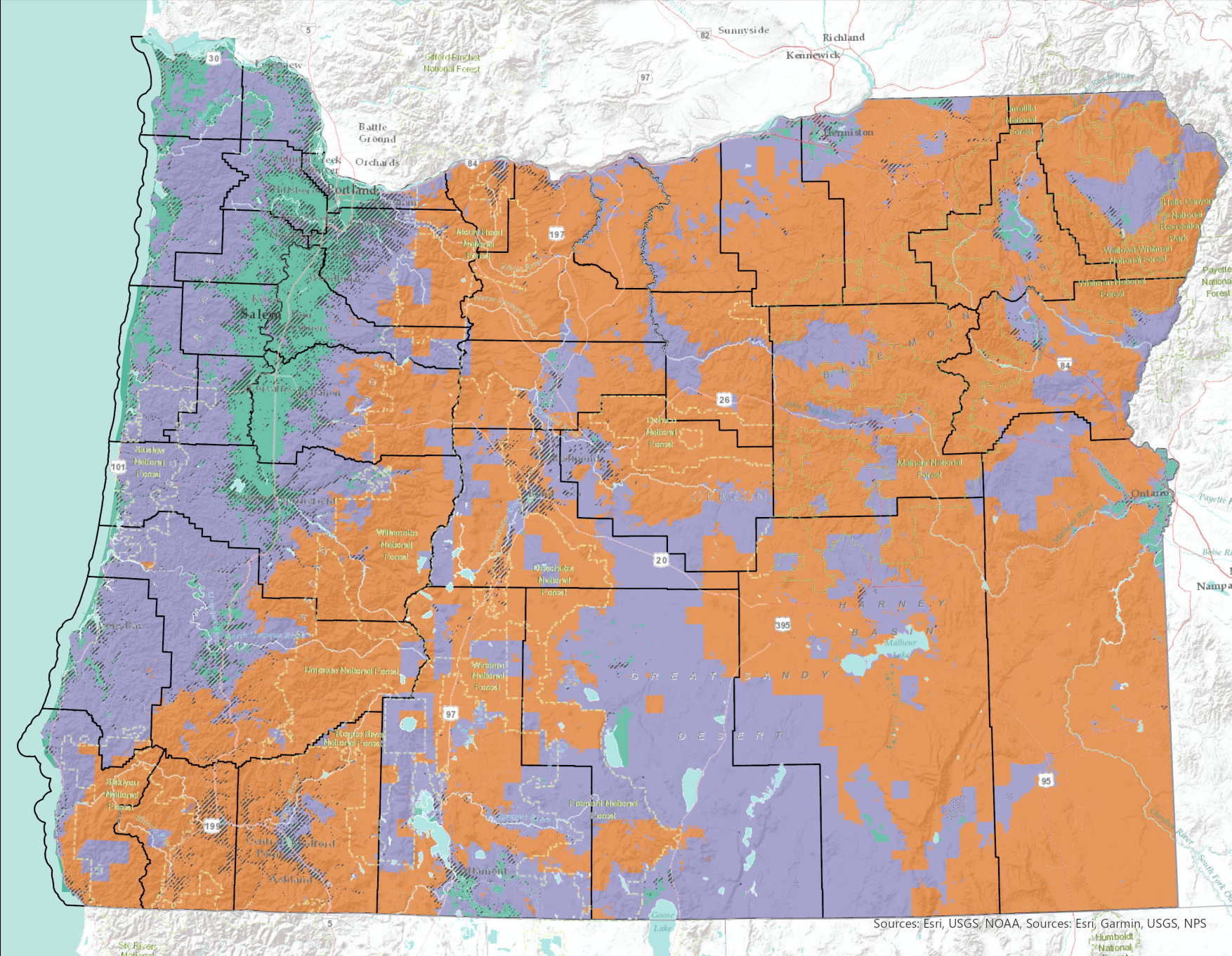
The Board directs the Department to proceed with the promulgation of the proposed rules and rules changes in September 2024, as presented in the draft rule language for Chapter 629, Division 01 and Division 44.







Questions?



POTENTIAL DRAFT HAZARD MAP

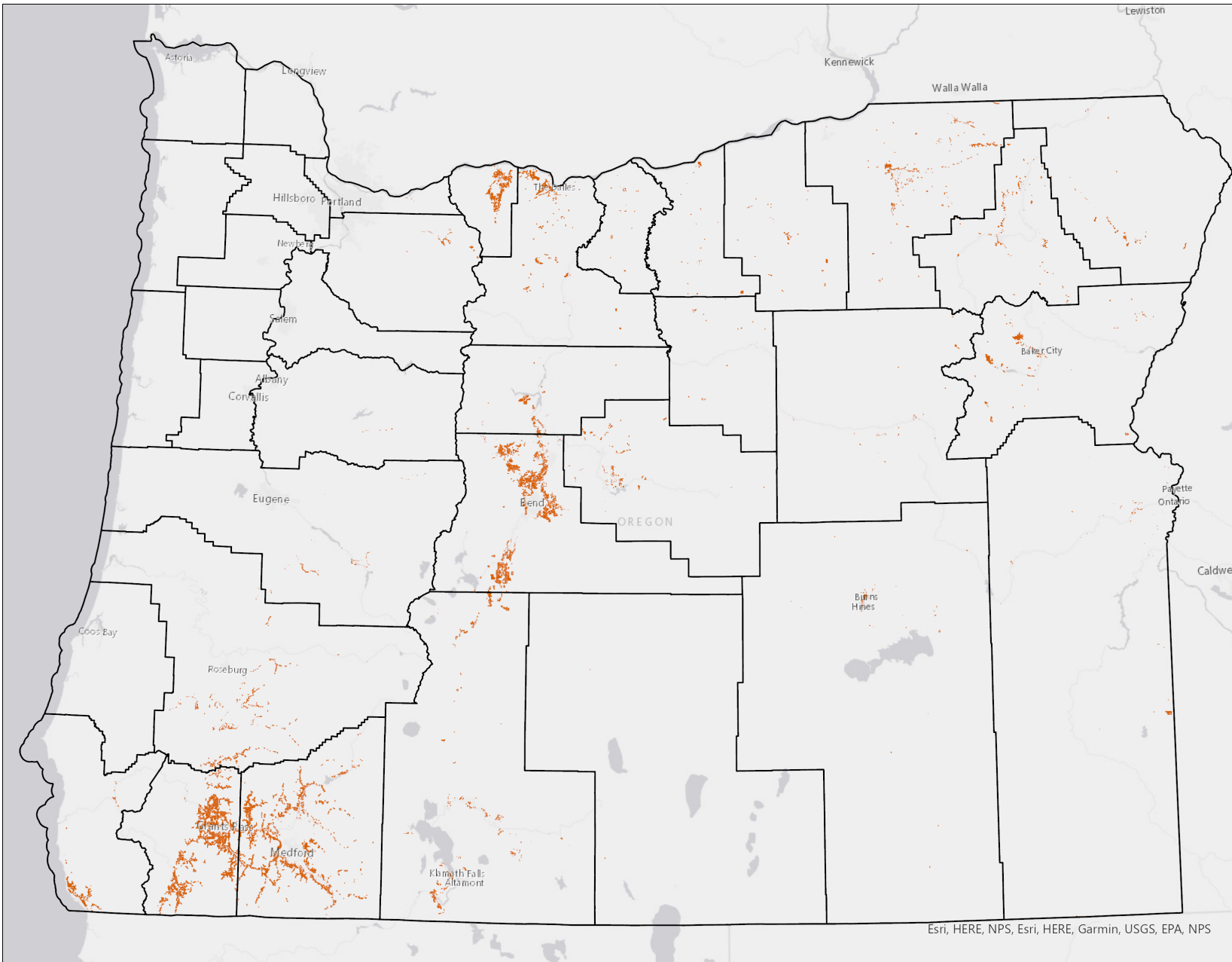


-  High Hazard
-  Moderate Hazard
-  Low Hazard
-  WUI


Sources: Esri, USGS, NOAA, Sources: Esri, Garmin, USGS, NPS

NUMBER OF TAX LOTS MEETING DUAL CRITERIA

- 100,284 tax lots are in the WUI and High Hazard under the updated fire hazard data
- Approximately 6% of all tax lots in Oregon



Esri, HERE, NPS, Esri, HERE, Garmin, USGS, EPA, NPS

 High Hazard Tax Lot intersecting WUI

 WUI