



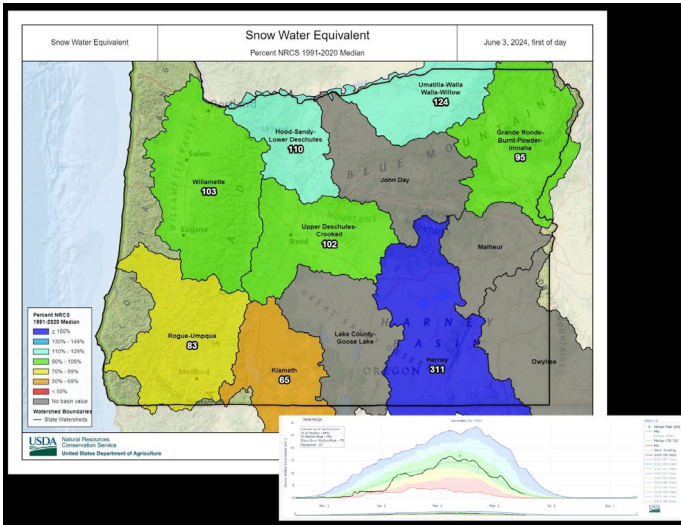
Oregon Department of Forestry 2024 Fire Season Update

Oregon State Forester
Cal Mukumoto

Chief of Fire Protection
Chris Cline

Deputy Chief of Fire
Protection - Operations
Ron Graham

Reasonable snowpack

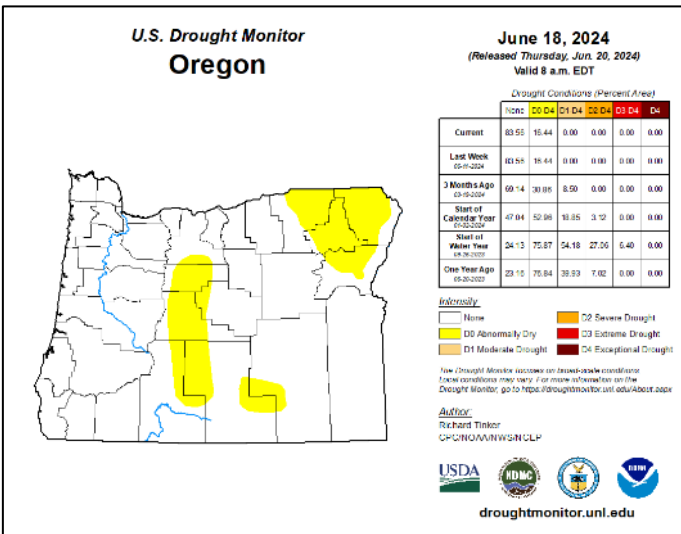


- Oregon was out of the severe drought we had been experiencing.

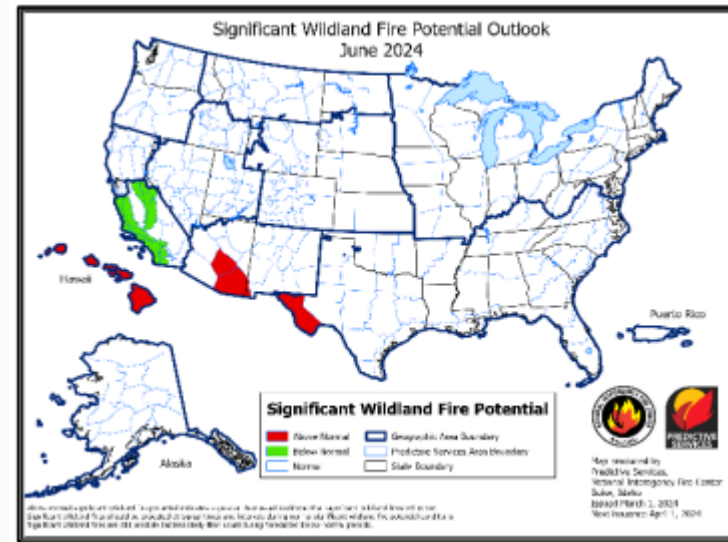
• (sort of...)

- National Significant Fire Potential – started average, but quickly spiked for central & southeast OR

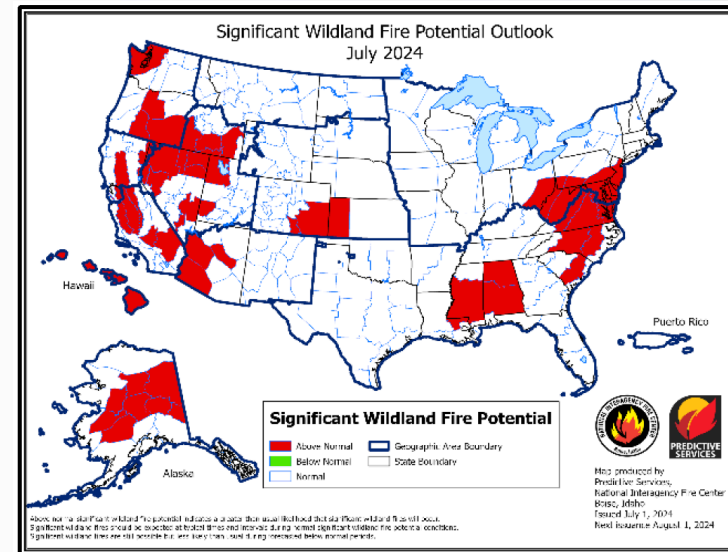
Mostly recovered drought



Before July

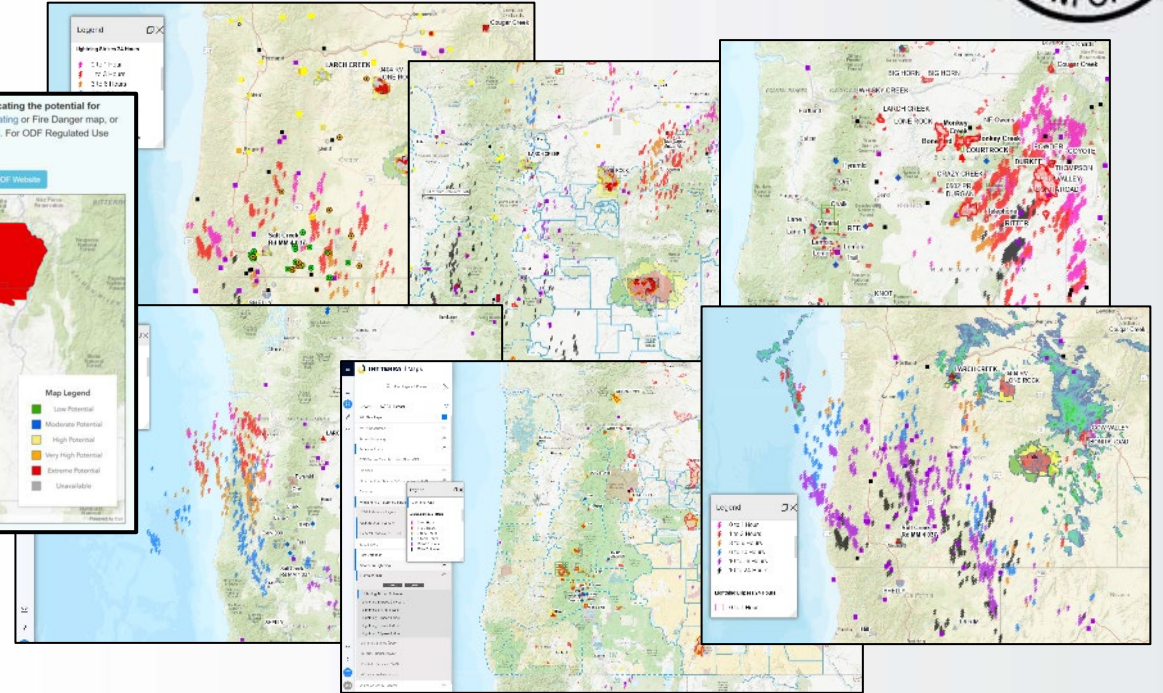
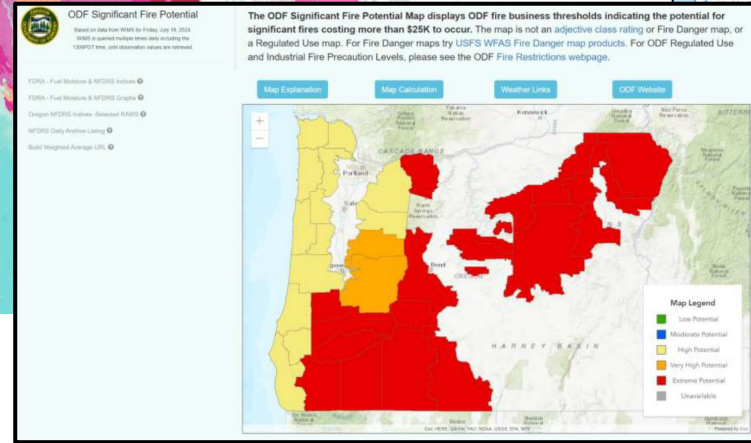
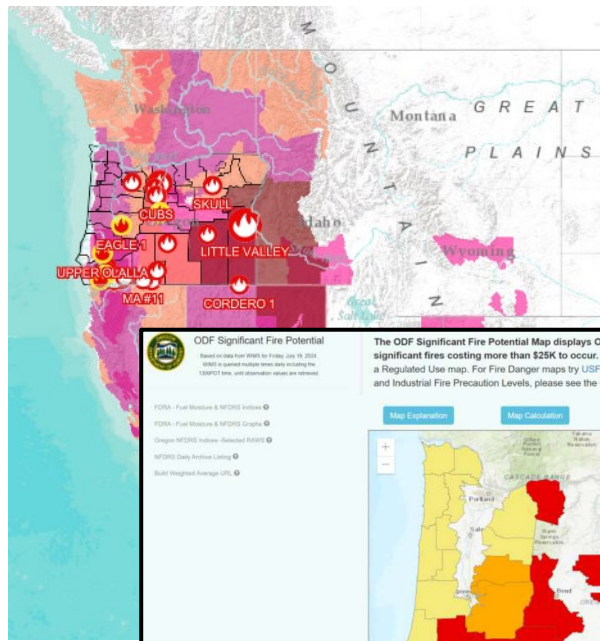


During July





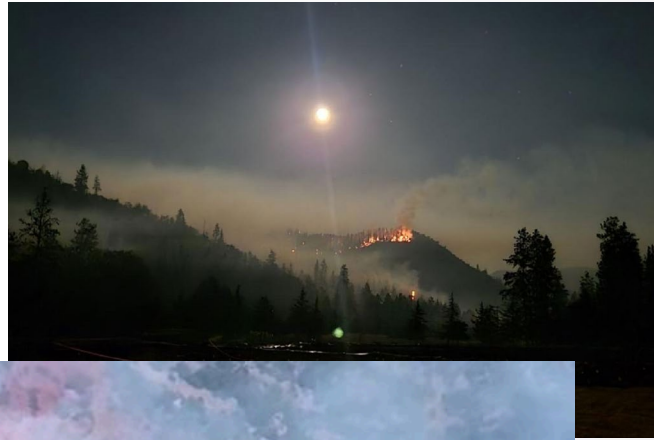
July 4-10,
and
July 13-16:
heat waves
In the 110
deg range...



July 16-17:
widespread dry lightning

.....and more on July 21-22, 24-25, Aug 4-5, Aug 13-14

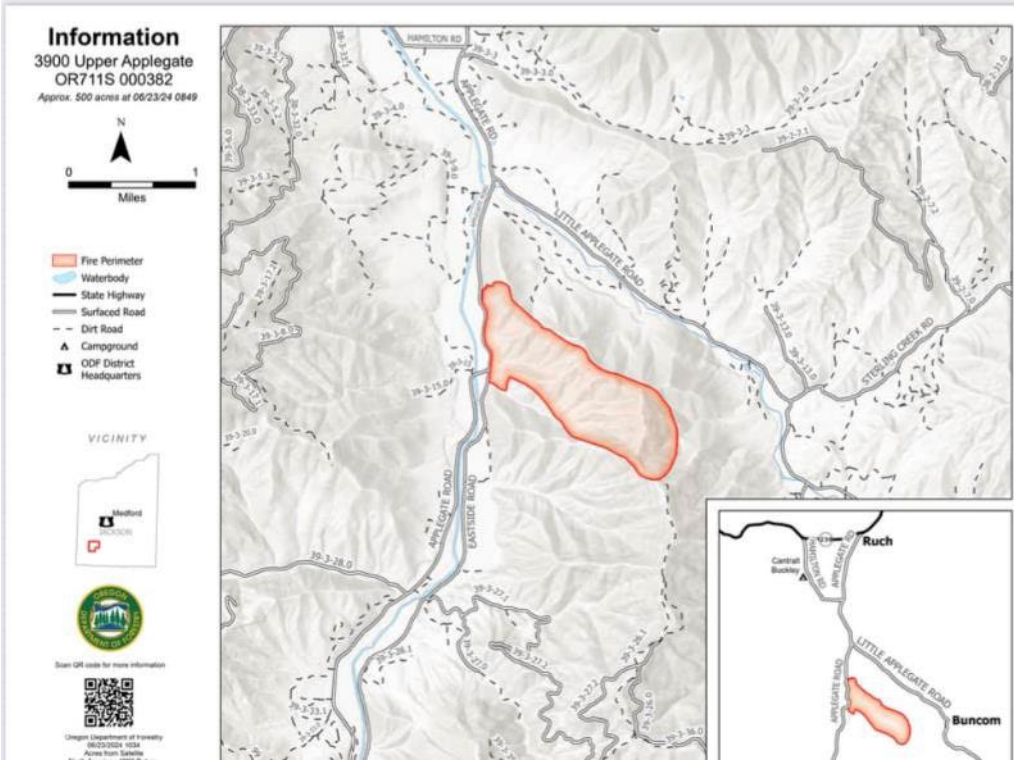
During the multiple storm event, over 6,100 strikes were recorded which ignited hundreds of fires. Indices were above the 97th percentile and fires exploded off the landscape. In addition, several large human-caused fires were already burning which only exacerbated the situation. Five of the fires grew into megafires of over 100,000 acres a piece! (falls, cow valley, durkee, lone rock, battle mountain complex)



3900 Upper Applegate Fire

• 6/20/2024

• 1,124 acres





Darlene 3 Fire

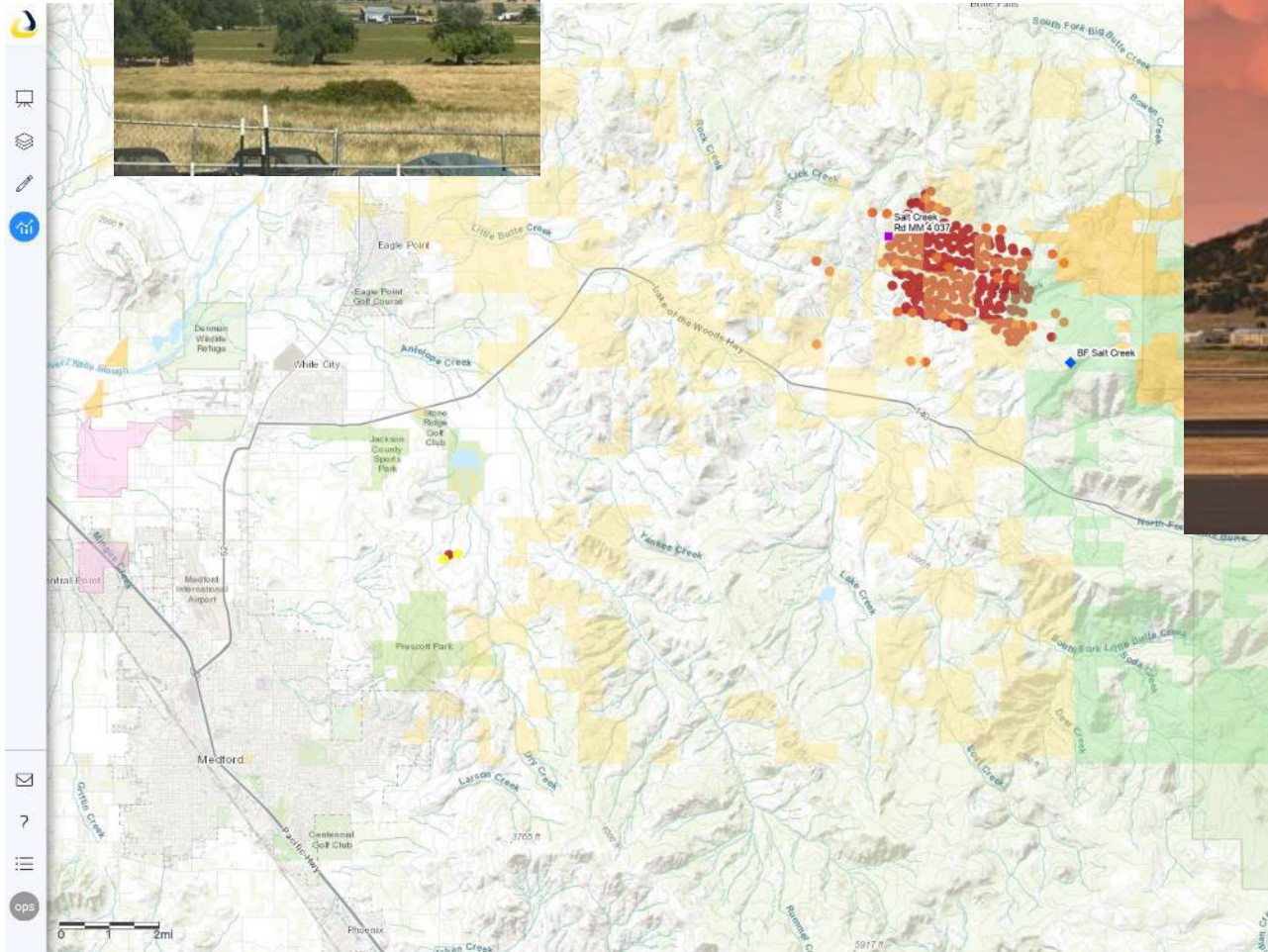
- 6/25/2024
- 3,903 acres
- FEMA
- **Unified CMD
BLM, OSFM
Red Team**





BF Salt Creek Fire

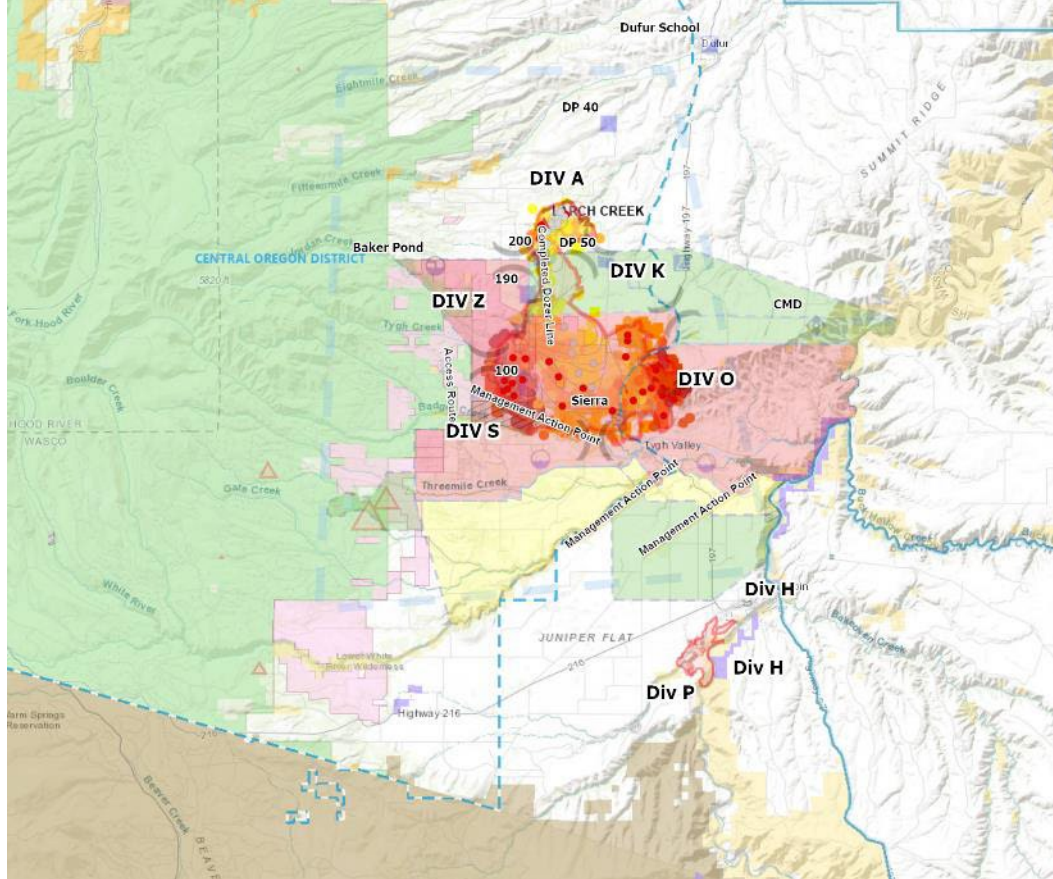
- 7/07/2024
- 1,500 acres
- IMT 1 (Hessel)





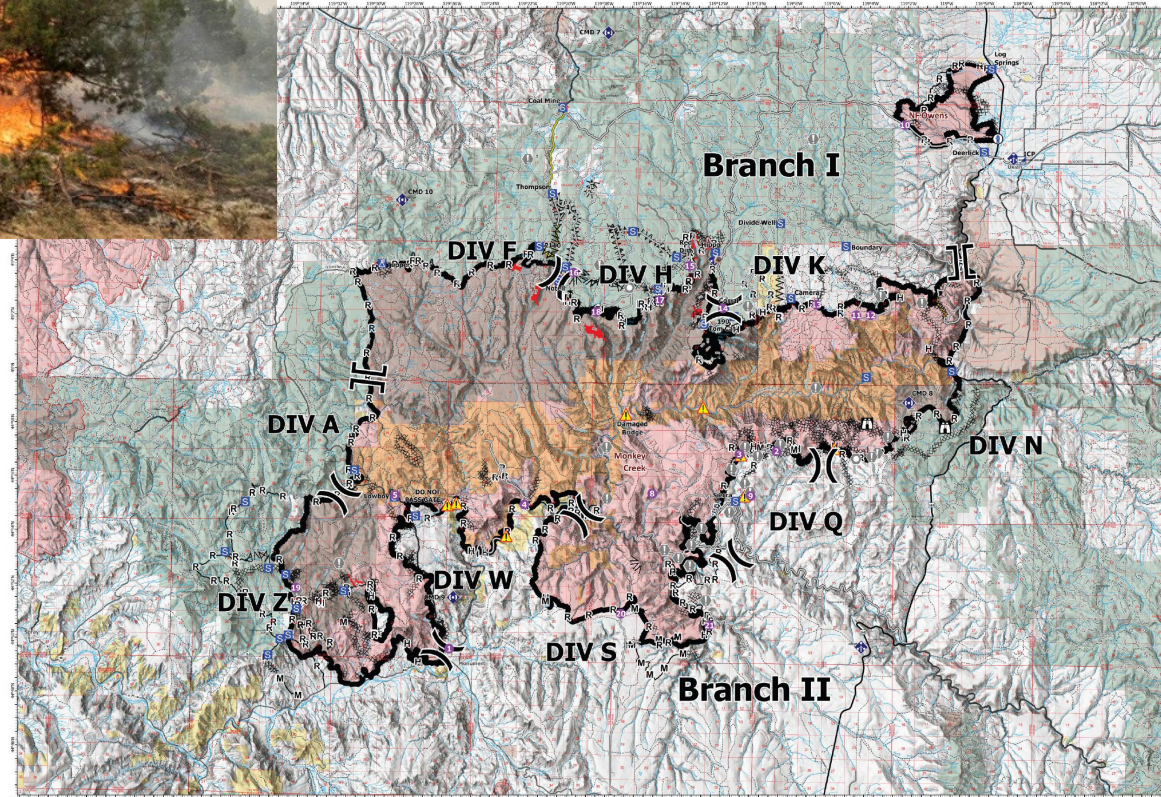
Larch Creek Fire

- 7/09/2024
- 16,240 acres
- FEMA
- **Unified CMD
IMT 2
(Howard),
OSFM Green
Team**





Battle Mountain Complex



BATTLE MOUNTAIN COMPLEX
OR9735-000250
08/20/2024 DAY
Total Acres: 183,026 as of 08/15/2024 at 1946
NF Owens: 4,484 | Monkey Creek: 178,542

● Helispot	■ Incident Command Post	○ Value at Risk	▲ Hazard	— H Completed Hand Line	— R Completed Road as Line	■ Wildfire Daily Fire Perimeter
⌋ Division Break	⌋ Branch Break	○ Landmark	○ Hydrant	— Completed Access Route	— Contained	
		⌋ Camp	⌋ Weather Unit	— Mixed Construction Line	— Uncontained	
		⌋ Staging Area	⌋ Repeater	— Completed Dozer Line		
		⌋ Lookout	⌋ Fuel Break			

BRIEFING MAP
08/20/2024 Day
BATTLE MOUNTAIN COMPLEX

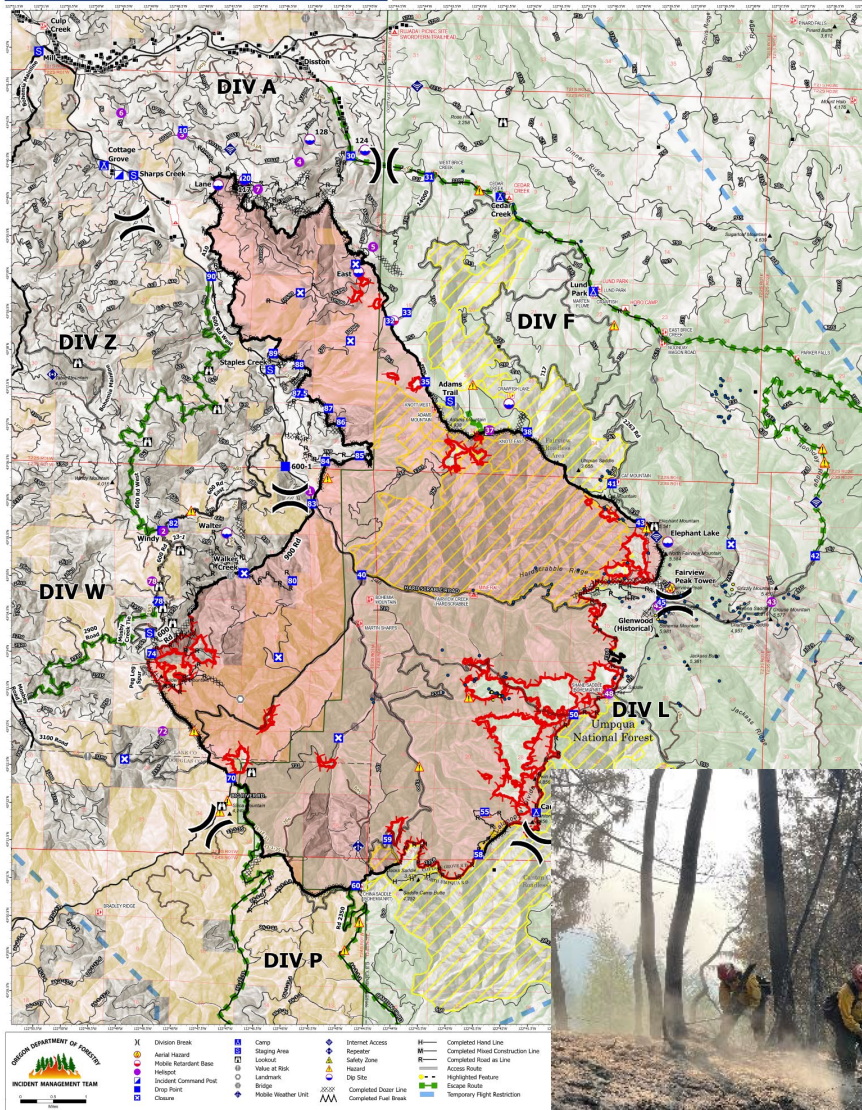
- 183,026 acres
- FEMA
- Unified CMD
- ODF IMT 1 (Hessel) ODF IMT 3 (McCarty)
- OSFM Green





Lane 1

- 25,267 acres
- North Carolina IMT
- ODF IMT 1 (Hessel)
- Several fires in a complex burned into one





Winding Waters

- 760 acres
- ODF IMT 2



Five lightning fires all on ODF protection.

Extremely challenging terrain.



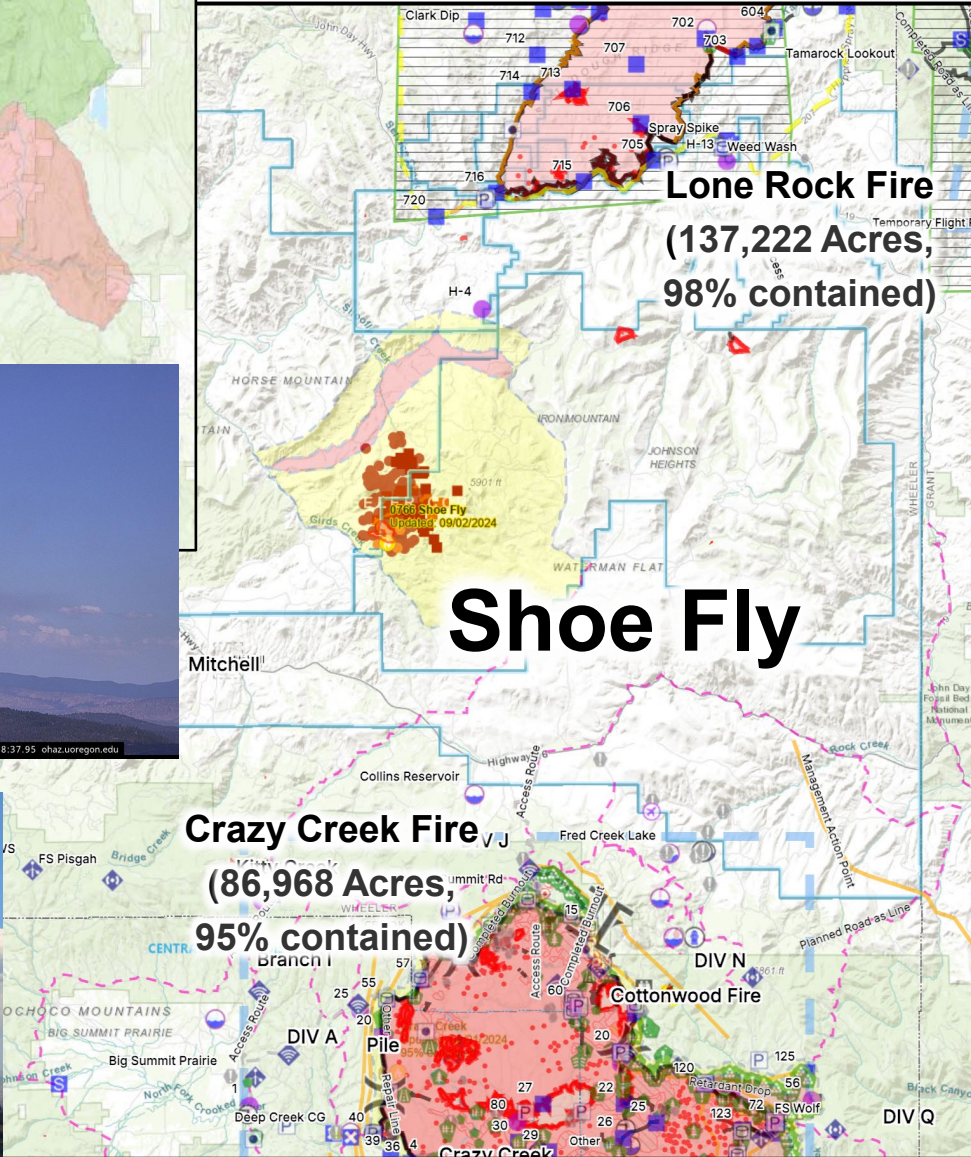
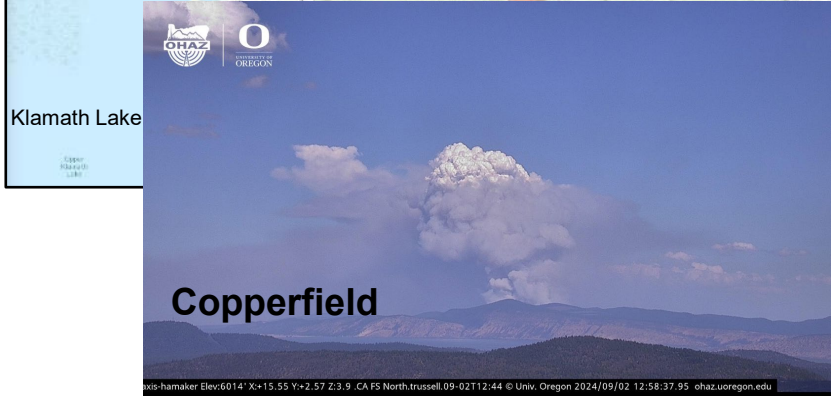
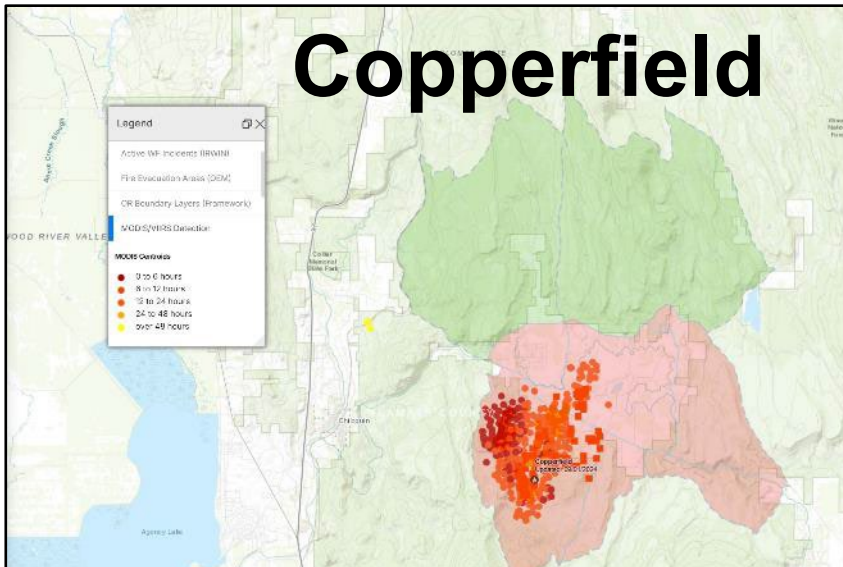
Dixon

- 1,970 acres
- **Unified CMD**
- **ODF IMT 2 (Howard)**
- **OSFM Green**





Labor Day Weekend Fires



- **Copperfield** – Klamath-Lake District

IMT3 (McCarty), OSFM Red FEMA Fire

9/01, **3,241 ac**

- **Shoe Fly** – Central Oregon District

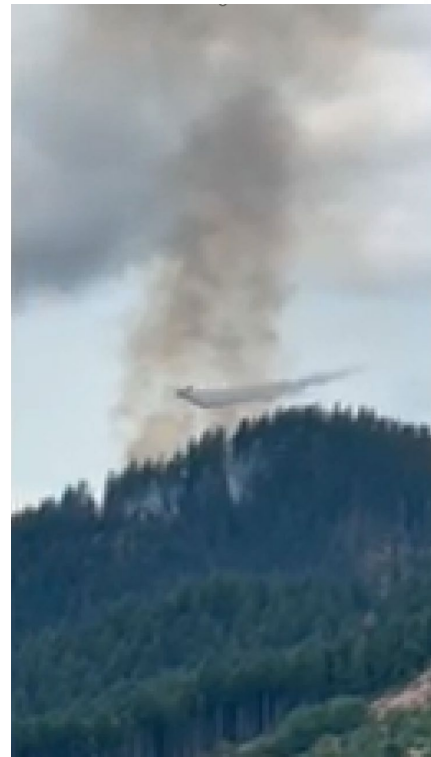
IMT1 (Hessel)

9/02, **~3,000 ac**

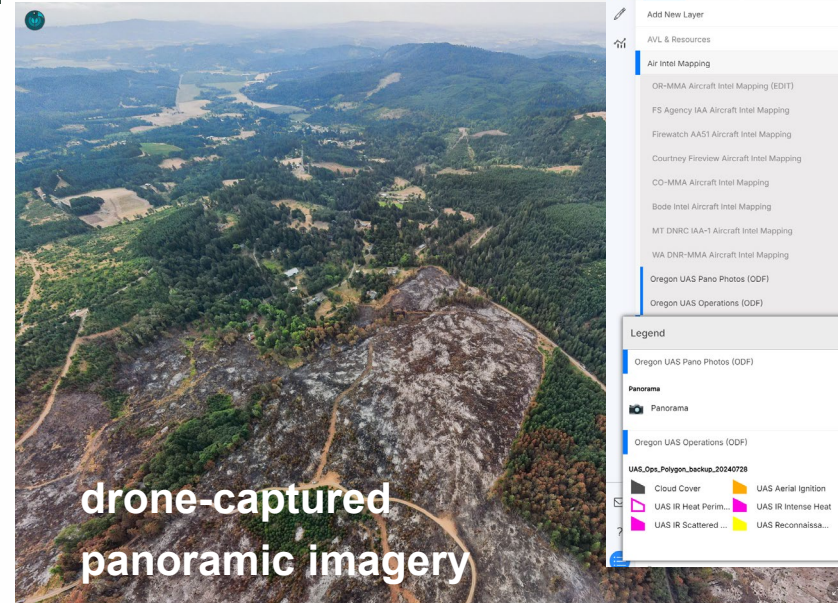


IA Successes

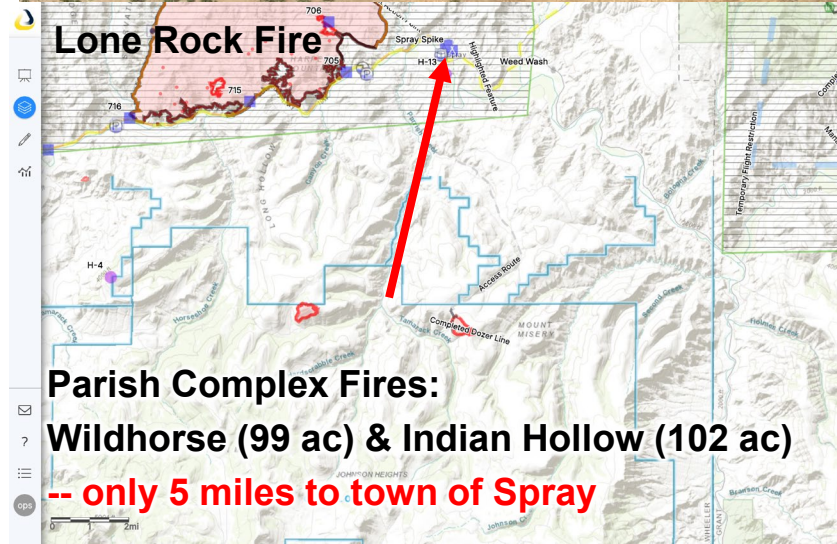
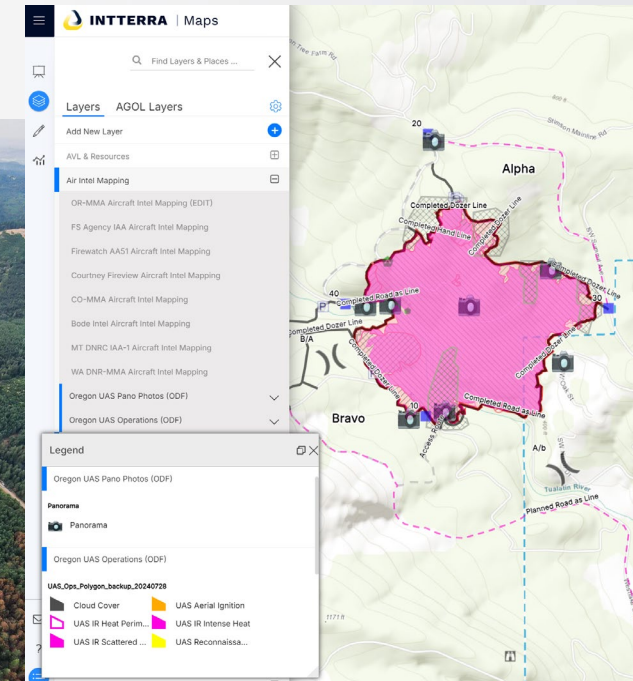
- Parrish Creek Complex COD- John Day
- Silver Falls - West Oregon
- Lee Falls fire - Forest Grove



Fire Boss dropping water on Silver Falls Fire



drone-captured panoramic imagery

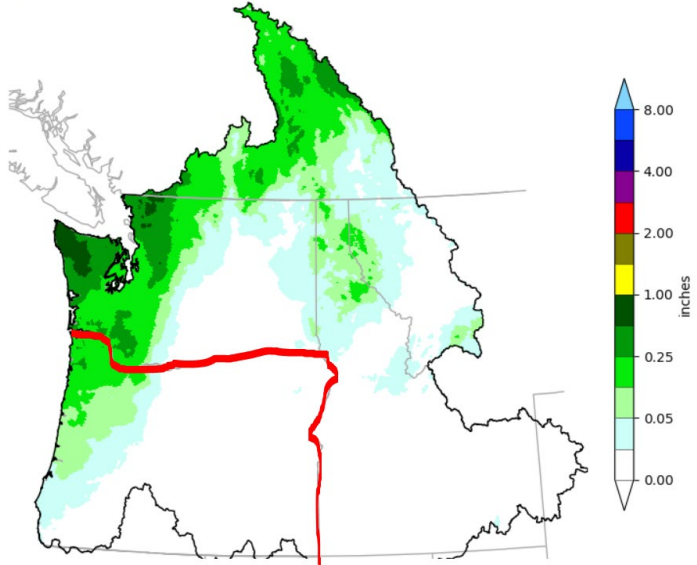


Lone Rock Fire

Parish Complex Fires:
Wildhorse (99 ac) & Indian Hollow (102 ac)
-- only 5 miles to town of Spray

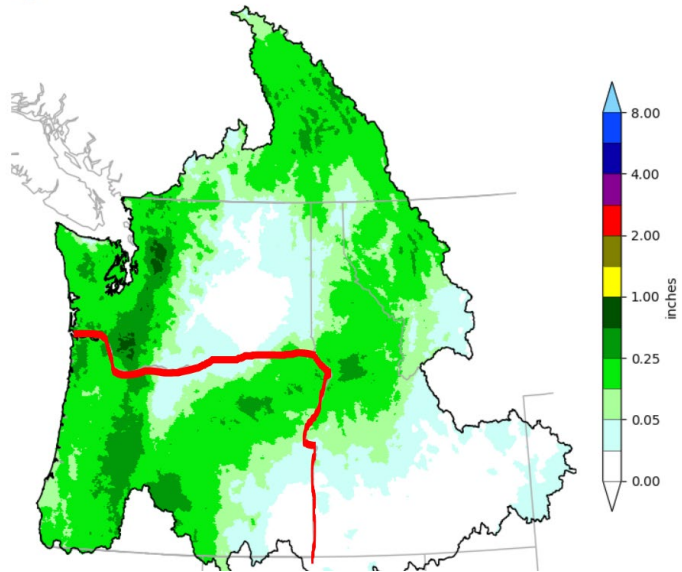
Day 3 (Wednesday): Precipitation Forecast ending Thursday, August 22 at 5 am PDT

 Northwest River Forecast Center
DAY 3 QPF, 24hr Period Ending 12Z, 08/22/24




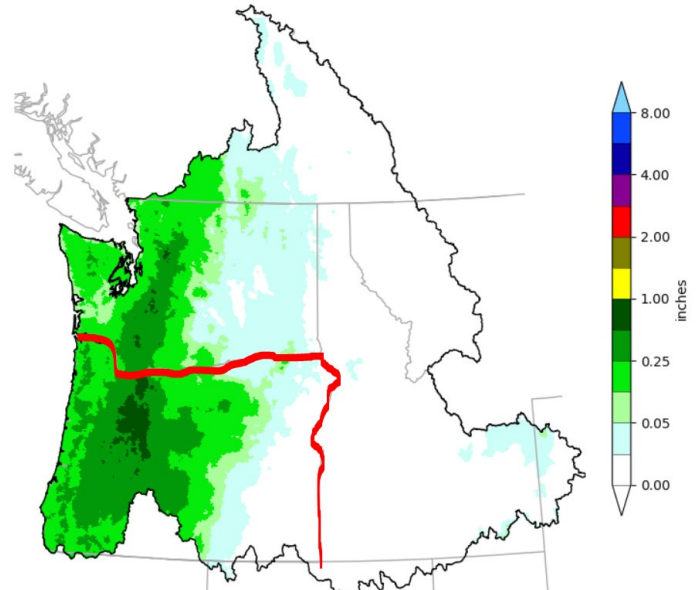
Day 5 (Friday): Precipitation Forecast ending Saturday, August 24 at 5 am PDT

 Northwest River Forecast Center
DAY 5 QPF, 24hr Period Ending 12Z, 08/24/24



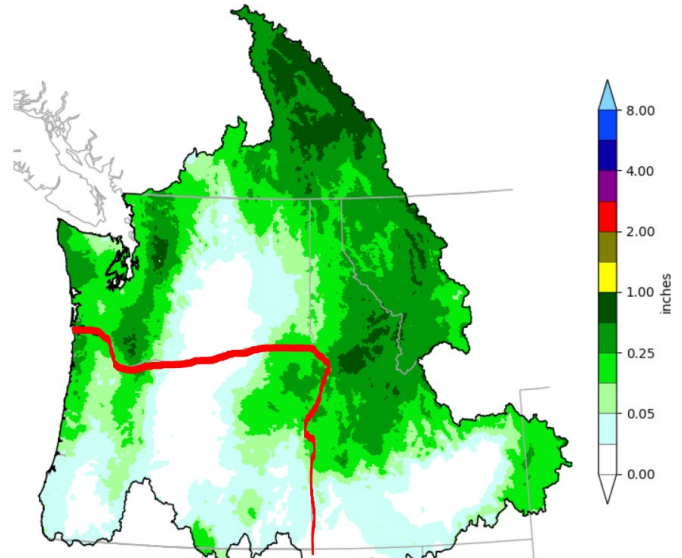
Day 4 (Thursday): Precipitation Forecast ending Friday, August 23 at 5 am PDT

 Northwest River Forecast Center
DAY 4 QPF, 24hr Period Ending 12Z, 08/23/24



Day 6 (Saturday): Precipitation Forecast ending Sunday, August 25 at 5 am PDT

 Northwest River Forecast Center
DAY 6 QPF, 24hr Period Ending 12Z, 08/25/24



Current Situation

Sept 3, 2024

with added acreage from Copperfield and Shoe Fly fires

ODF Fire Statistics



2024 Year To Date		
	Fires	Acres
Lightning	177	125,672
Human (and UI)	567	90,774
Total	744	216,447
10-Year Average (2014-2023 Year To Date)		
Lightning	208	41,797
Human	604	28,063
Total	812	69,860

94%

fires kept at 10 acres or less to date in 2024

254,692 impact acres on ODF-protection from all statewide fires

2024 vs 2023 YTD:
254,692 vs 17,216 acres
~15 times greater than 2023

2024 vs 10-year average YTD:
254,692 vs 69,860 acres
~4 times greater than 10-year average



Resources helping ODF with the firefight

Resources Imported by State

AK	28
AL	1
CA	13
CO	1
FL	15
HI	9
ID	7
IL	1
KS	1
ME	1
MN	6
NC	4
ND	2
NH	1
NM	12
NV	1
RI	1
SC	3
SD	3
TX	2
WA	4
WI	10

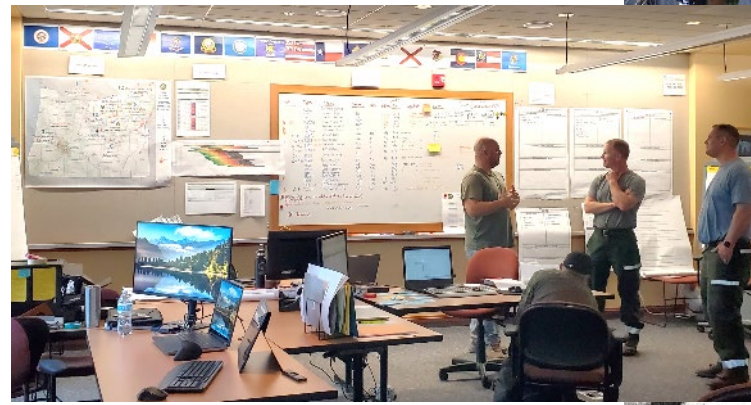
Total Persons Imported:	455
Total States Imported:	22
International Resources:	5
Total Resources:	126
Total Command:	18
Total Operations:	87
Total Management:	21

Oregon National Guard

Total Persons Assigned:	152
Total Crews:	7

International Resources

Total Persons Assigned:	5
Saskatchewan	2
Northwest Territories	3



2024 ODF Statewide Support Team

Oregon National Guard

- Through Governor Kotek's State of Emergency Declaration, ODF was able to order firefighting resources from the ORNG

- ODF ordered 7 hand crews: 4 assisted at the Falls and Telephone Fires in central Oregon

A second rotation assisted at the Diamond Complex in the Oregon Cascades and demobilized on August 29

Resources helping with the firefight





ORNG Aircraft



2 – Medical Evacuation Helicopters

- 60 days on standby (total)
- 6 Missions

2 – T1 Suppression Helicopters

- Dropped 162,000 gallons of water
- Supported Dixon, Microwave, and Lane1 fires.



Severity Aircraft Stats



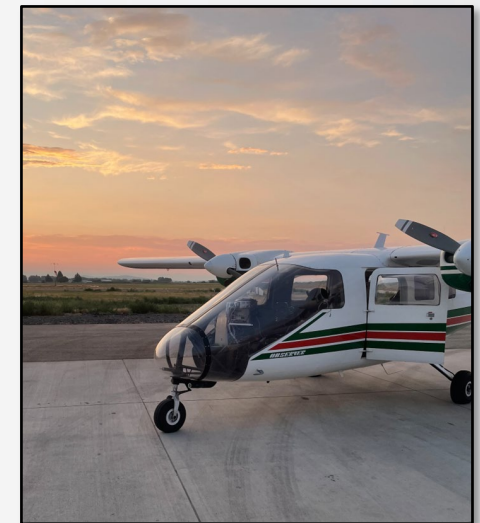
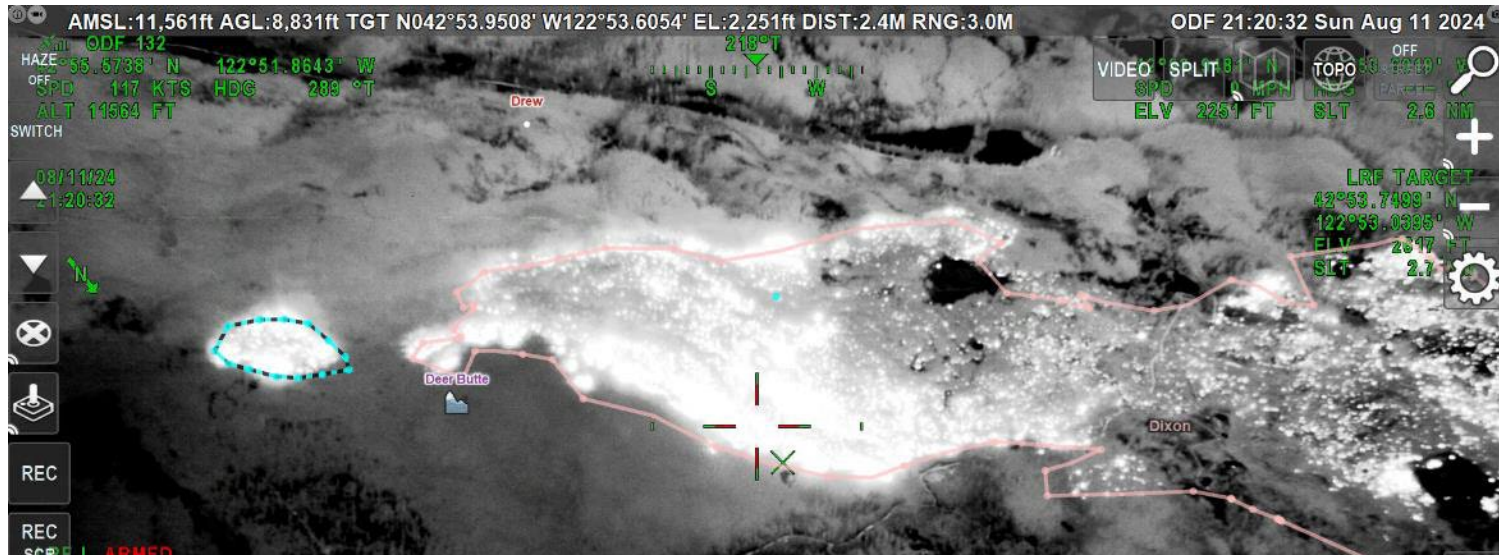
All statistics are estimates until reconciled after fire season.

- **Total Severity Program Aircraft Flight Hours: 1,322**
 - 9-yr Average = 1,180
- **Water Bucket Drops: 3,553**
- **Water Delivered (gal): 980,000**
- **Retardant Delivered (gal): 257,000**
- **Water Enhancing Gel (gal): 328,000**
- **95 firefighters delivered**
- **1,323 lbs. of equipment**



ODF Multi-Mission Aircraft

- 22 Fire Detections
- 50 hours
- IR and visible camera capability
- Video and images available in SOFSA





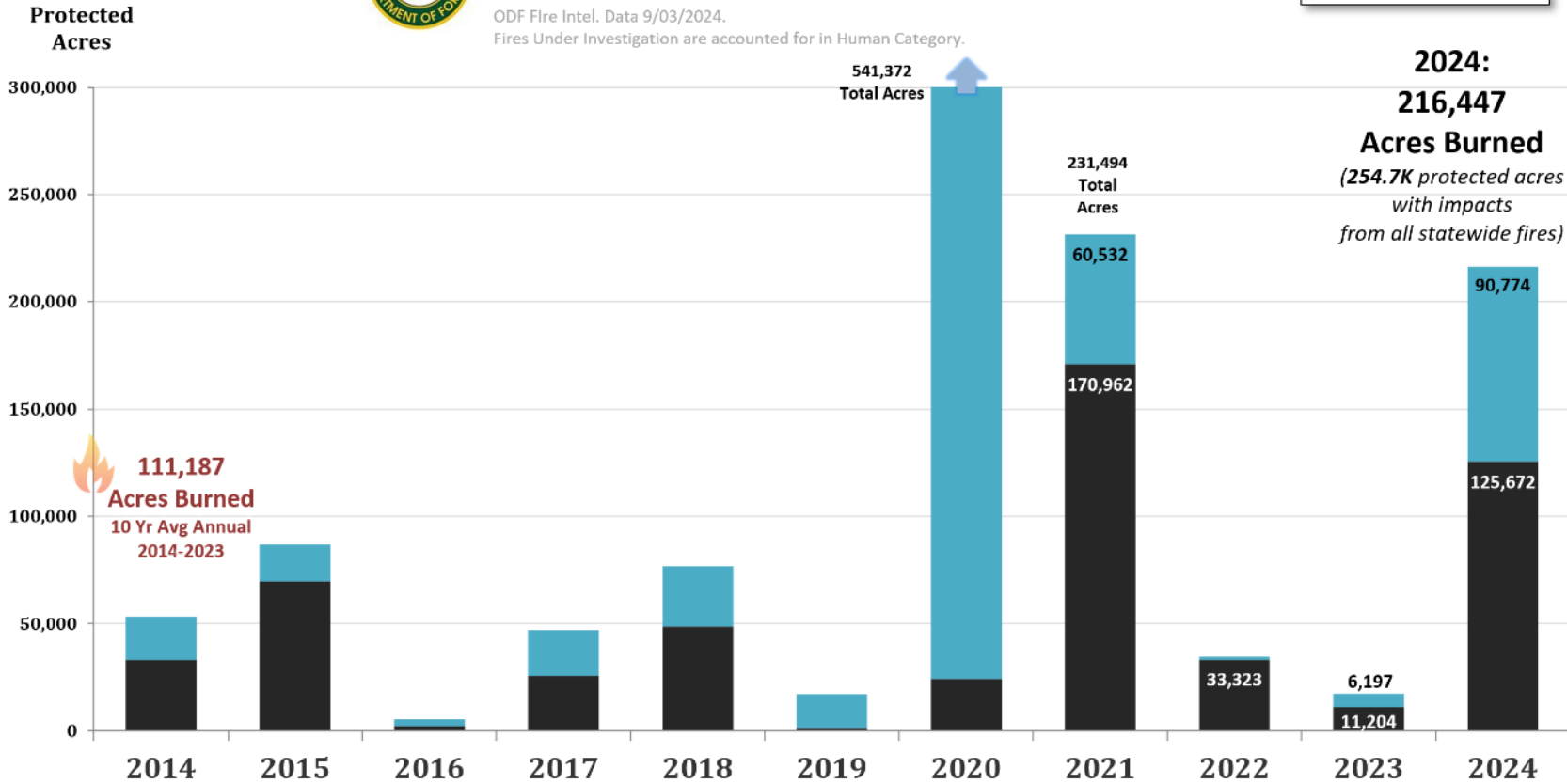
ODF Recent Fire History: Acres Burned



Oregon Department of Forestry Protected Acres Burned 2014-2023

ODF Fire Intel. Data 9/03/2024.
Fires Under Investigation are accounted for in Human Category.

■ Lightning ■ Human



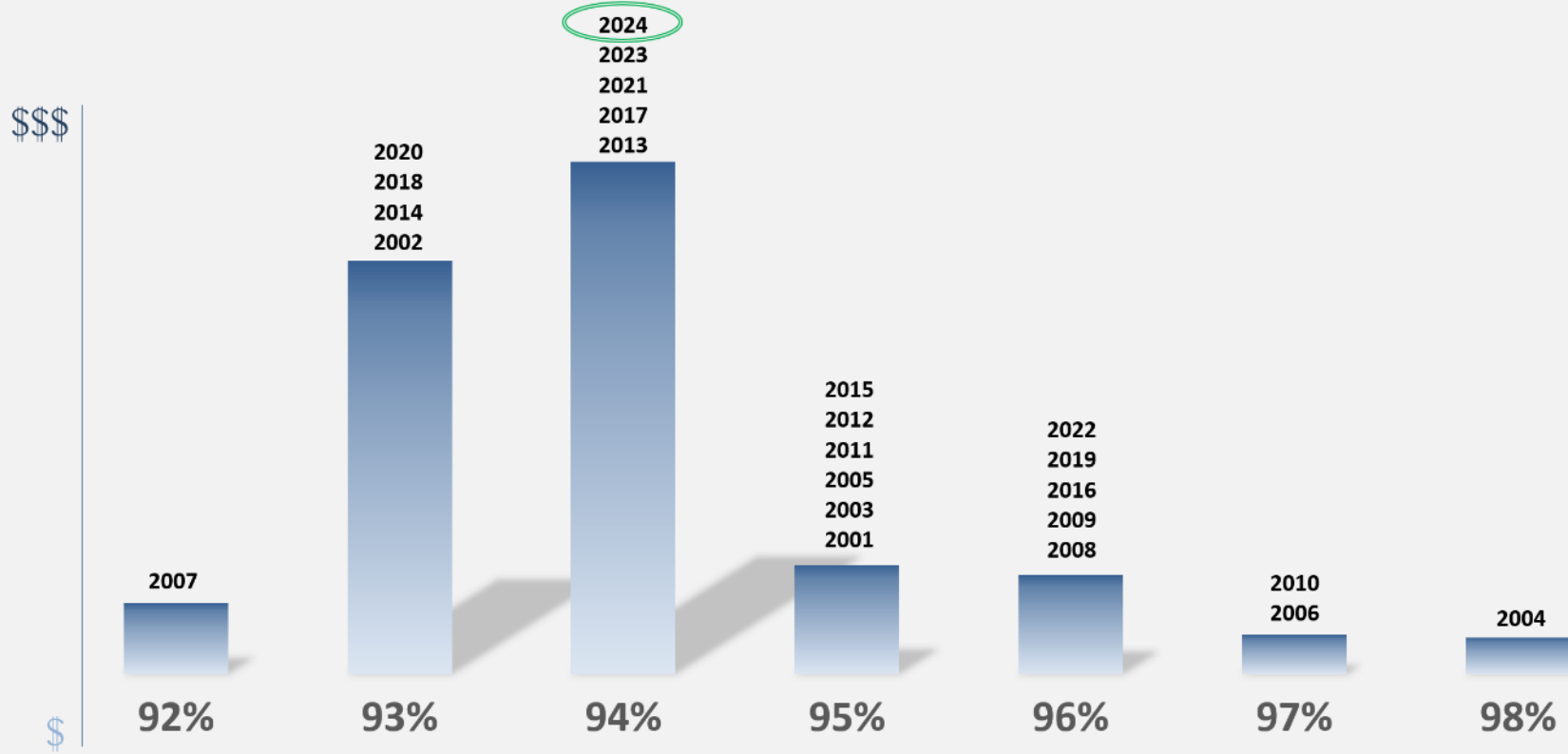
On average, 47% of Oregon wildfires start within ODF Districts, but only 18% of the state's acres burned are on ODF protected lands.

In 2024, ODF had 43% of statewide fires, and only 13% of statewide acres burned.



Keeping Fires Small Means Big Savings

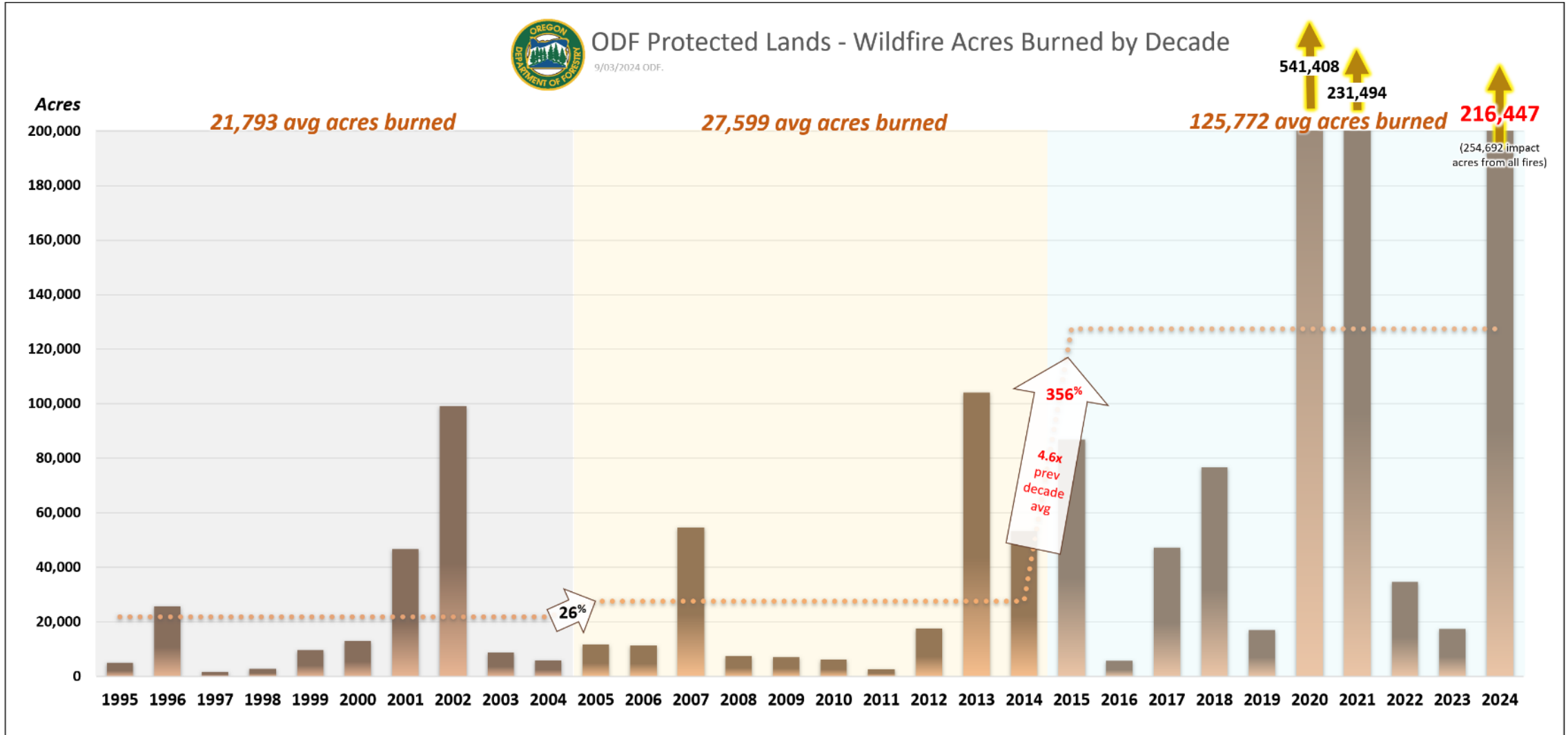
ODF Fires data 8/28/2024, Protection Finance and EFCC data 8/22/24.
Showing Average of Gross Costs for Years at Each Performance Level (%).



Key Performance Measure: Percentage of Fires Caught at 10 Acres or Less

ODF Fire Suppression Effectiveness

Acres Burned by Decade – ODF Protection

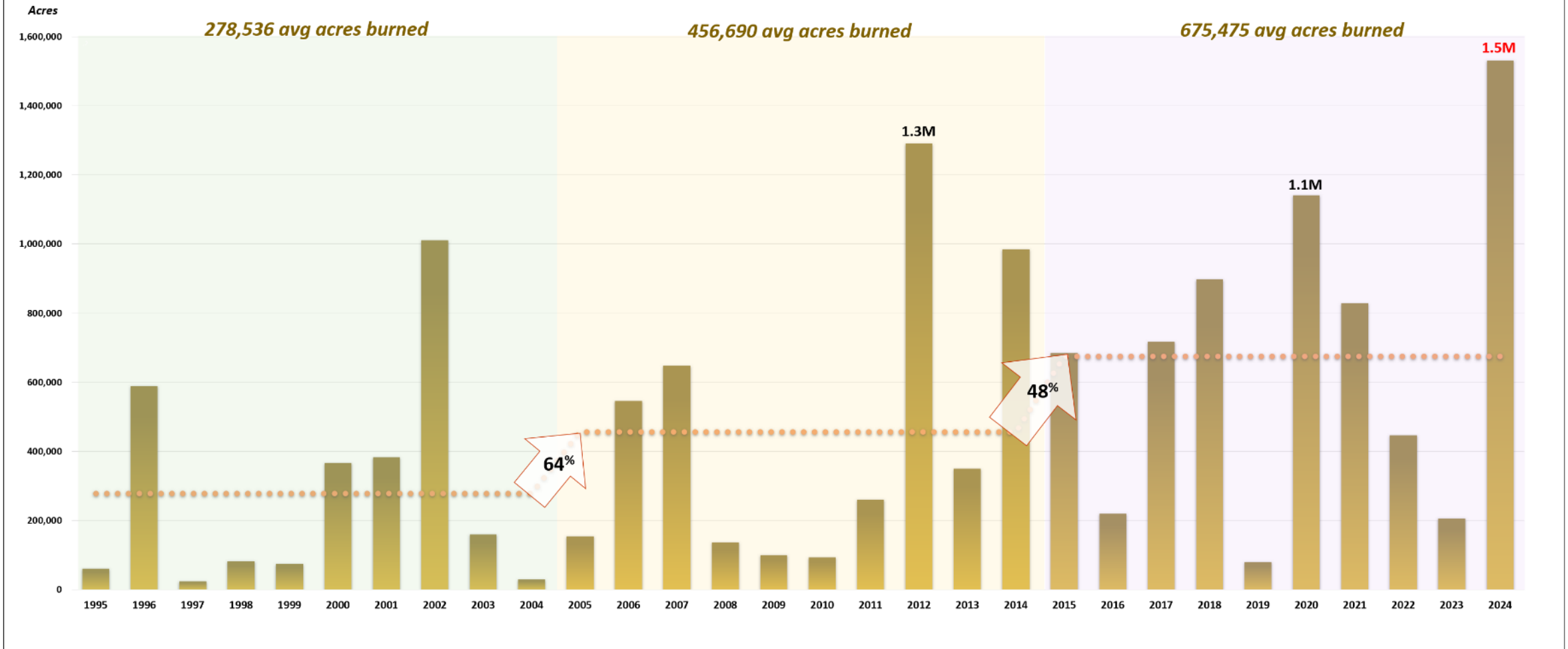


Acres Burned by Decade – All Jurisdictions



Oregon All Agencies - Wildfire Acres Burned by Decade

8/28/2024. NIFC, NWCC, ODF.





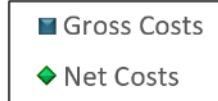
ODF Large Fire Costs 2014-2024

with 5-year averages

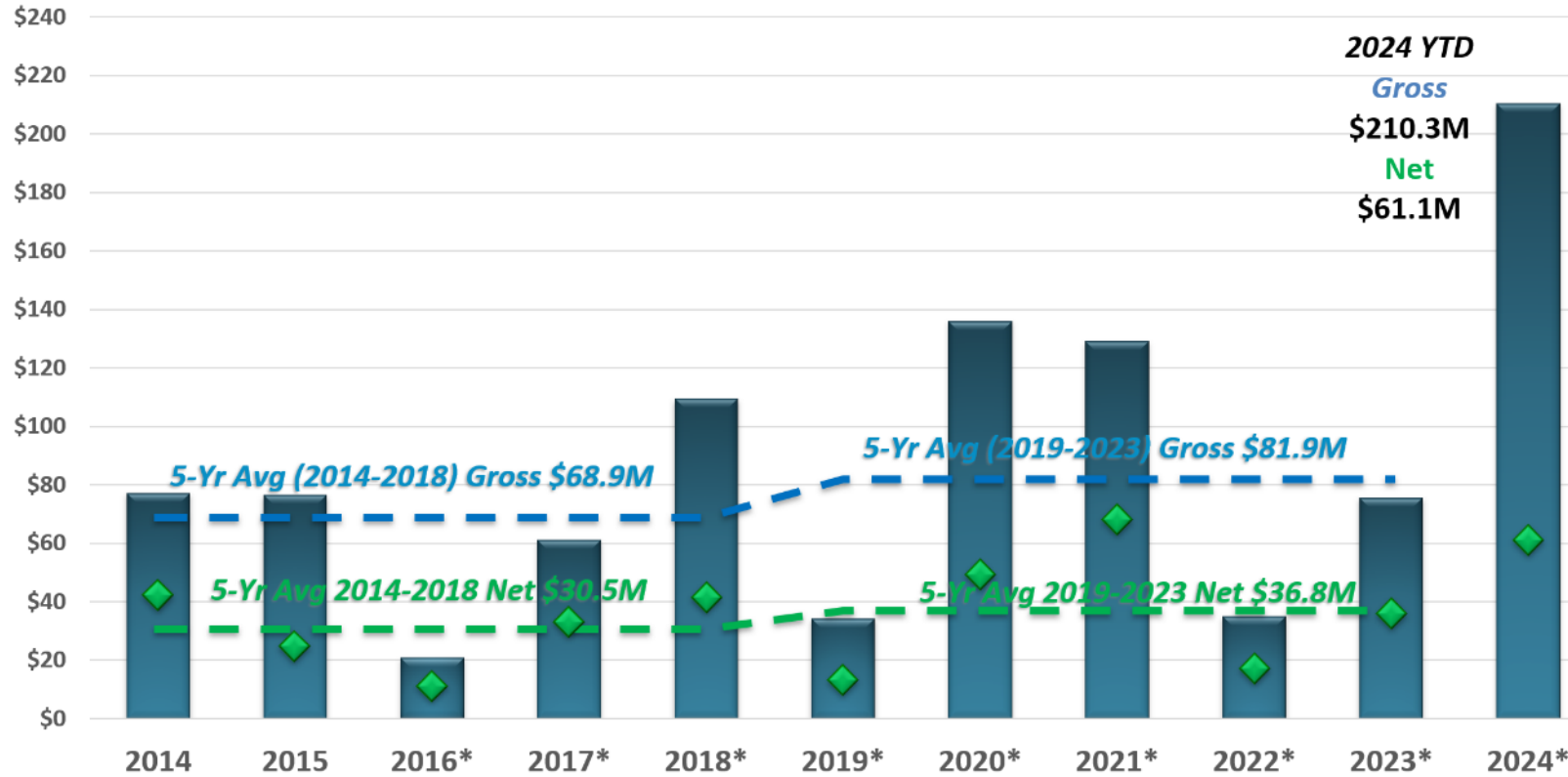


ODF Large Fire Costs 2014 - 2024

ODF Protection Finance and EFCC Data 8/22/2024.
Values include non-jurisdictional fires for 2013-2023.
Five-year averages shown.



Costs
(Millions)



*includes draft claims figures



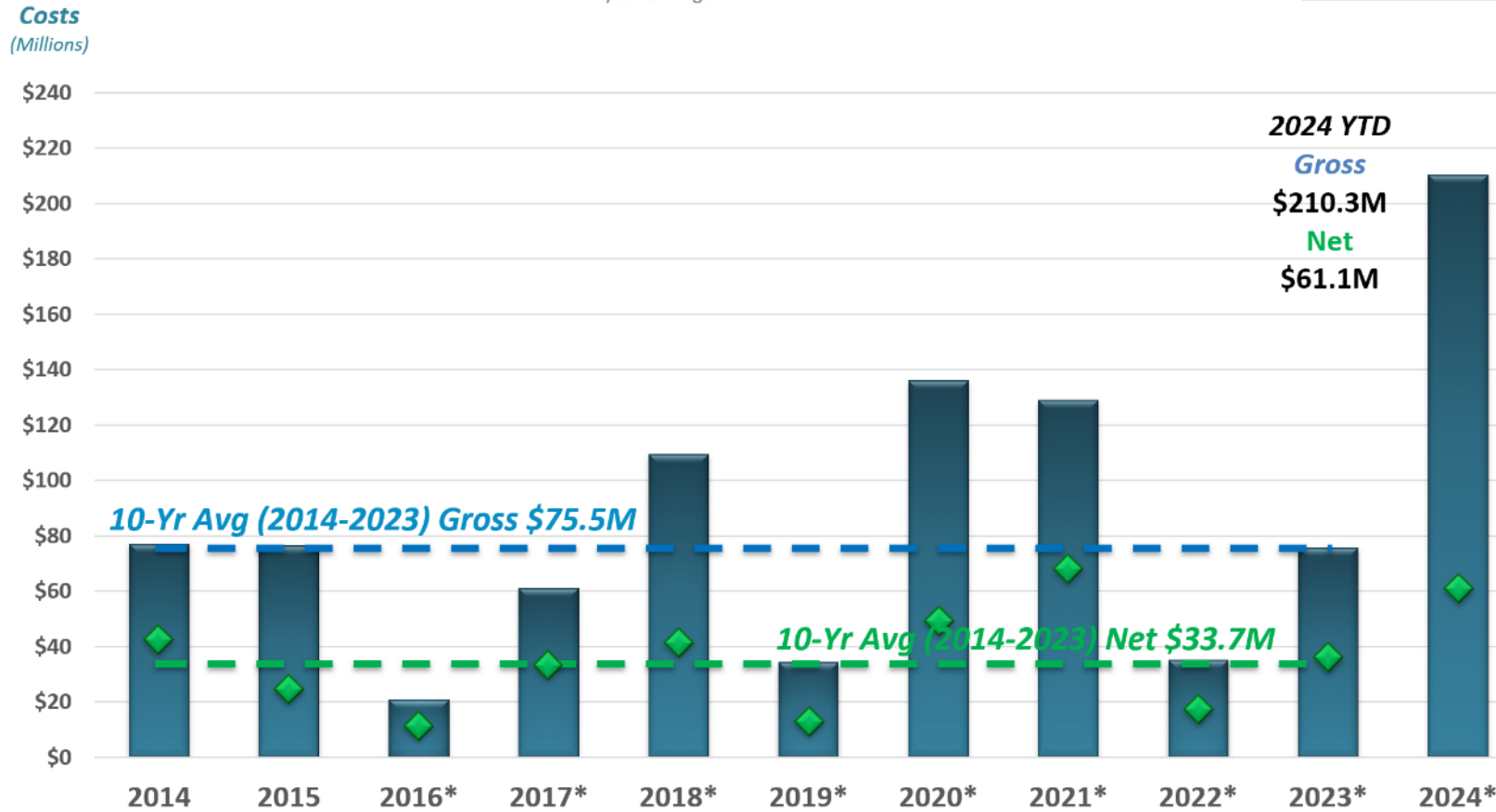
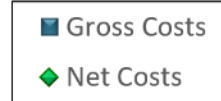
ODF Large Fire Costs 2014-2024

with 10-year average



ODF Large Fire Costs 2014 - 2024

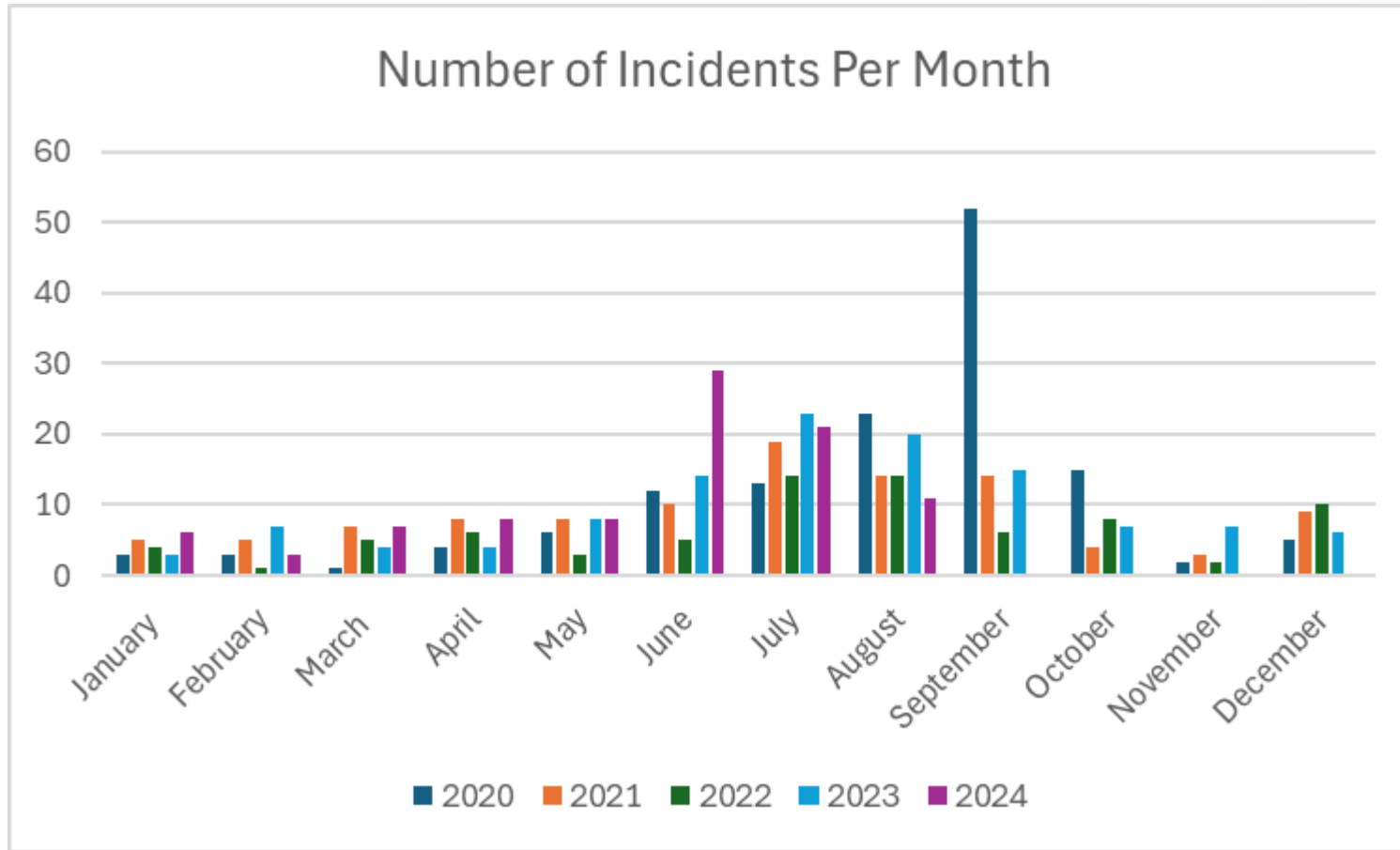
ODF Protection Finance and EFCC Data 8/22/2024.
Values include non-jurisdictional fires for 2013-2023.
Ten year average shown.



*includes draft claims figures

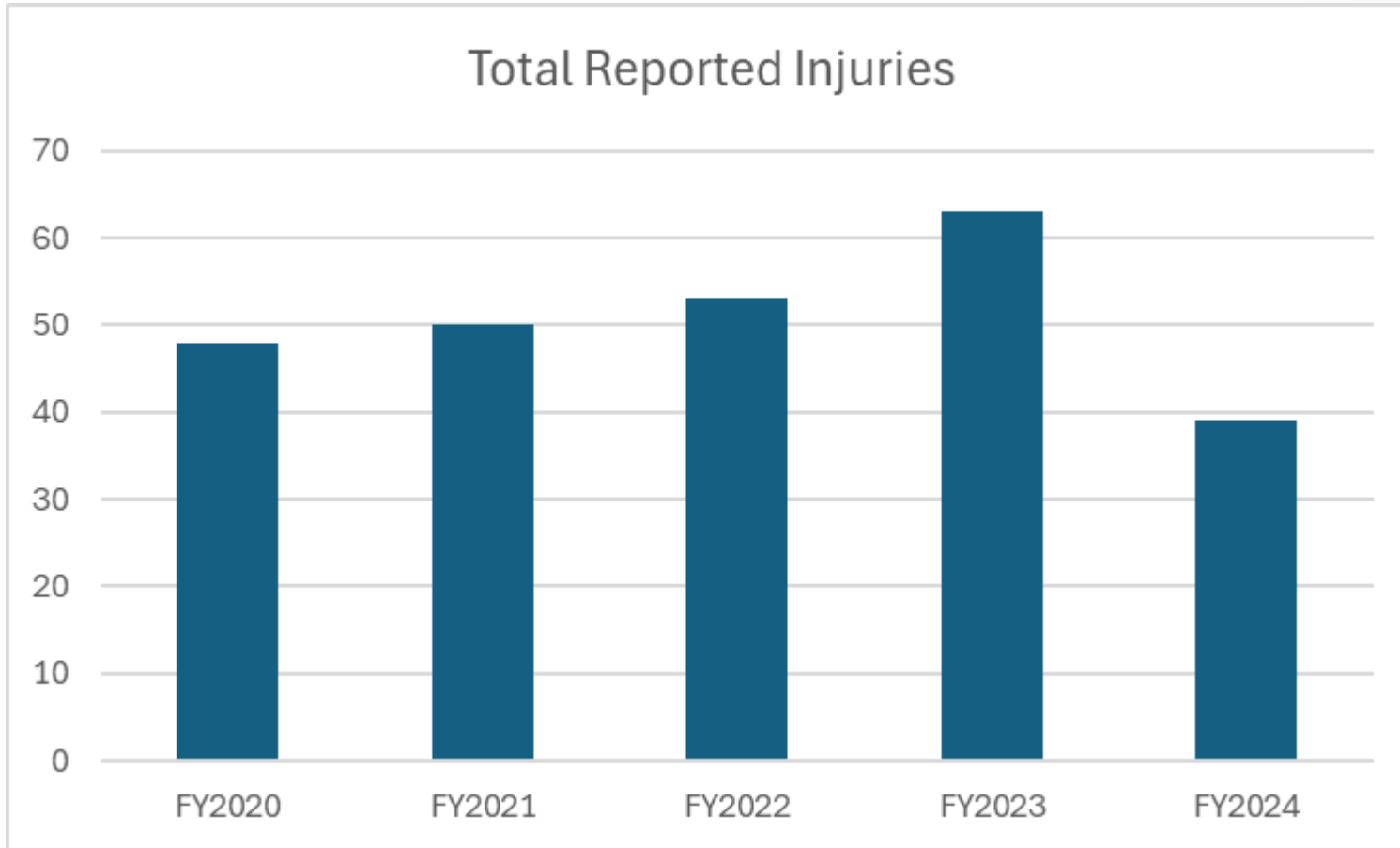


Statewide Safety: Incidents Per Month





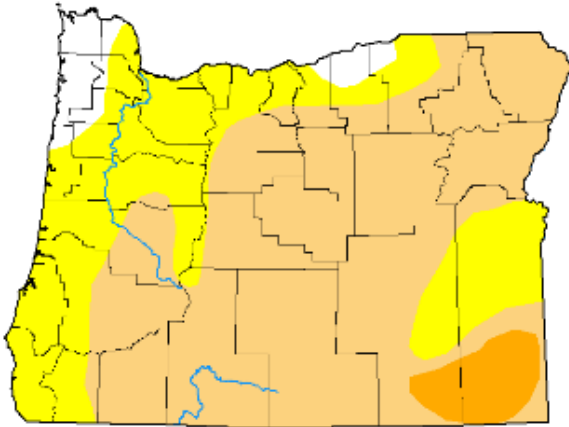
Statewide Safety: Reported Injuries



Oregon is back to moderate drought, almost state-wide!

**U.S. Drought Monitor
Oregon**

August 13, 2024
(Released Thursday, Aug. 15, 2024)
Valid 8 a.m. EDT



Intensity:

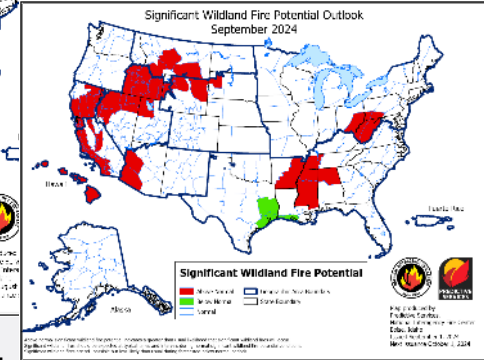
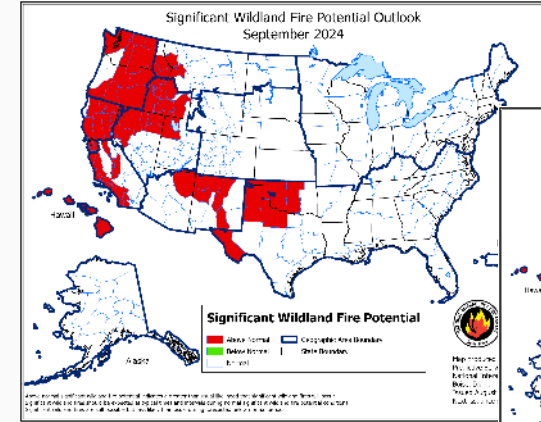
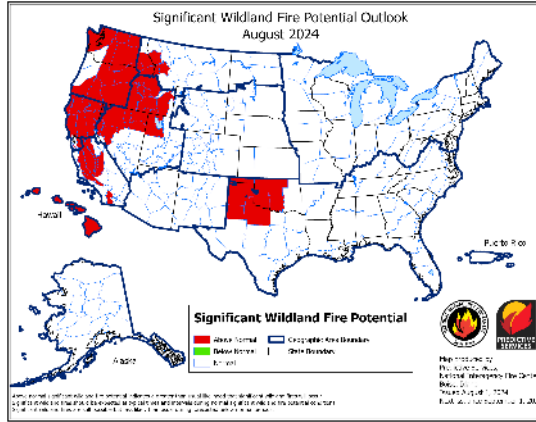
- None
- D0 Anomaly Dry
- D1 Moderate Drought
- D2 Severe Drought
- D3 Extreme Drought
- D4 Exceptional Drought

The Drought Monitor focuses on broad-scale conditions. Local conditions may vary. For more information on the Drought Monitor, go to www.droughtmonitor.unl.edu/About.aspx

Author:
Curtis Rigetti
National Drought Mitigation Center

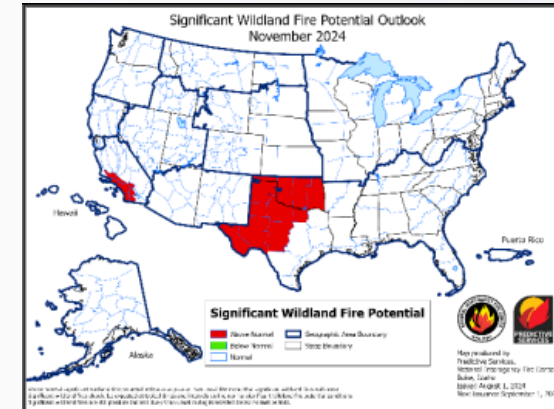
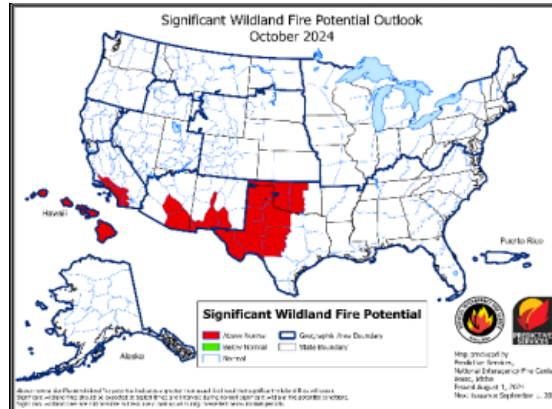


And forecast show for continued large fire potential through September...

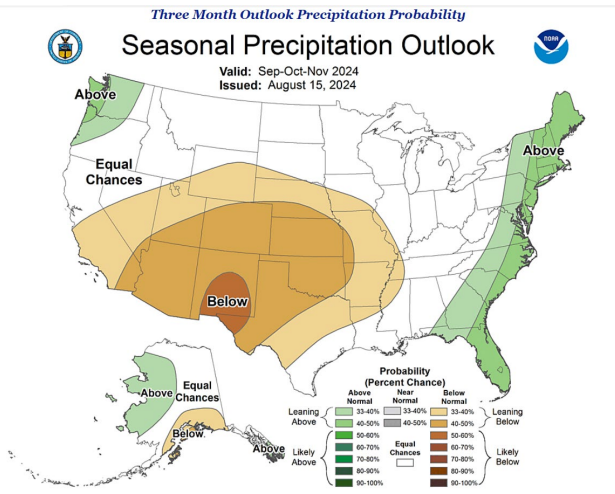


Issued Sept 1, 2024:

but then a quick drop off in October and November



Most likely due to above average forecast precipitation

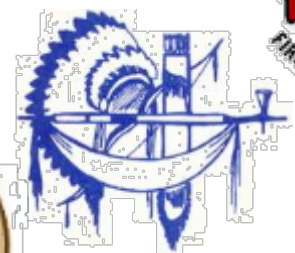


Caveat is: east winds start on the west side in September into October, so we can't let our guard down yet!

Oregon's Complete and Coordinated Fire Protection System



OREGON FOREST & INDUSTRIES COUNCIL



WASHINGTON STATE DEPARTMENT OF Natural Resources

