

Wildfire Hazard Map

Oregon Board of Forestry

June 6, 2024



Overview

- Senate Bill 80 (2023) modifications
- Wildfire Programs outreach and coordination
- Irrigated Agriculture
- Key Rule Section review
- Impact summary
- Implementation Timeline
- Department's Recommendation to the Board
- Next Steps





Agency partners



Department of Consumer
and Business Services



Department of Consumer
and Business Services



Senate Bill 80 (2023)

- Largely composed trends and issues identified from public comments and the original appeals process.
- Statutory changes:
 - Identified purpose of the map
 - Inform Oregon residents and property owners about their wildfire exposure by providing transparent and science-based information.
 - Assist in prioritizing fire-adaption resources and funding for the most vulnerable locations.
 - To Identify where defensible space standards and home hardening codes will apply.
 - Change 5 “risk” classes to 3 “hazard classes”
 - Changed who receives notification letters
 - Requires a robust community engagement process
 - Changed the appeals process from Department designed to a contested case hearing



Fall County meetings

AOC District	Counties in district	Date	Location
5	Benton, Lane, Linn	September 8	Eugene
7	Clatsop, Columbia, Lincoln, Tillamook	September 15	Tillamook
4	Coos, Curry, Douglas, Josephine	September 18	Grants Pass
—	Jackson	September 19	Medford
2	Crook, Deschutes, Harney, Jefferson, Lake, Klamath	September 21	Klamath Falls
3	Gilliam, Hood River, Morrow, Sherman, Wasco, Wheeler	September 28	Moro
1	Baker, Grant, Malheur, Umatilla, Union, Wallowa	September 29	Pendleton
6	Marion, Polk Yamhill	October 6	Dallas
8	Clackamas, Multnomah, Washington	October 11	Remote



Change in Burn Probability

Version 3 minus Version 2

Absolute Difference

-0.069 - -0.04 (decrease)

-0.04 - -0.03

-0.03 - -0.02

-0.02 - -0.01

-0.01 - -0.001

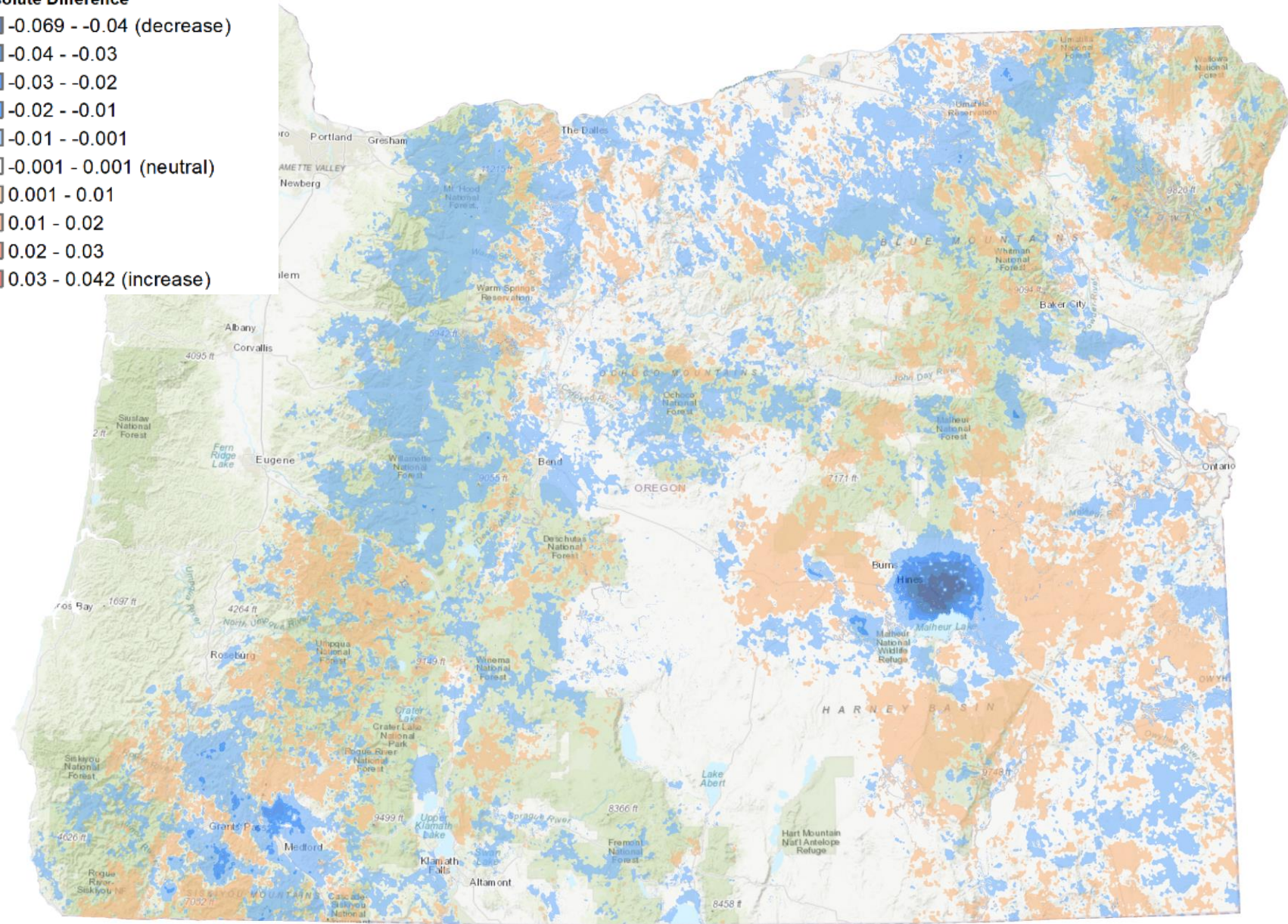
-0.001 - 0.001 (neutral)

0.001 - 0.01

0.01 - 0.02

0.02 - 0.03

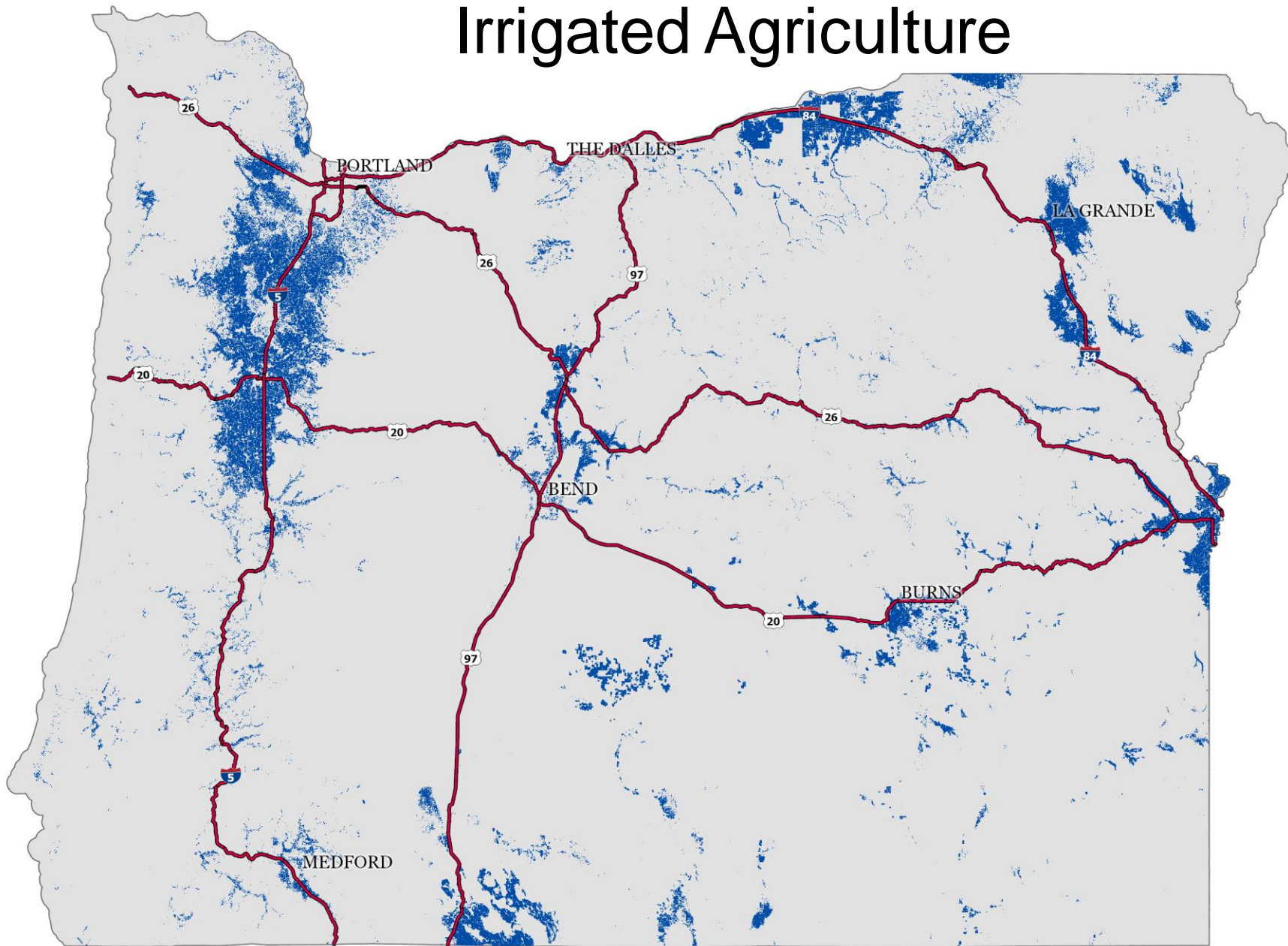
0.03 - 0.042 (increase)



KNOWN MODIFICATIONS IN RESPONSE TO PUBLIC FEEDBACK

- Adjusted fire modeling in specific hay and pasturelands
- Adjusted fire modeling in north Cascades

Irrigated Agriculture



EXTENT OF CROPLAND IRRIGATED AT LEAST ONE IN FIVE YEARS

- 2,727,540 acres of croplands were irrigated in at least one year (2017 – 2021).
 - 370,203 acres (14%) of which are in the WUI

Irrigated Agriculture

SPATIAL EXTENT OF IRRIGATED AGRICULTURE

Number of years identified as irrigated (<i>out of five years</i>)	Acres	Percent of Total (<i>from column A</i>)	Cumulative acres	Cumulative Percent of Total
5	2,409,351	55.2	2,409,351	55.2
4	717,970	16.5	3,127,321	71.7
3	426,561	9.8	3,553,882	81.5
2	393,224	9.0	3,947,106	90.5
1	414,319	9.5	4,361,425	100

Irrigated Agriculture

Number of Tax Lots in High Hazard

Scenario	Statewide	Within WUI Only
<i>BEFORE</i> adjusting irrigated fields	164,369	104,521
<i>AFTER</i> adjusting irrigated fields	159,314	100,284
Difference	5,055	4,237

SPATIAL EXTENT OF IRRIGATED AGRICULTURE

- Recommended adjustments for irrigated agriculture will cause 4,240 additional to no longer be subject to defensible space and fire hardening code

Rule Section Review cont.

- Agency Procedural Rules
 - Modified to reflect inclusion of the hazard map as a contested case, and alignment with changes to the Administrative Procedures Act throughout.
- Wildfire Hazard Rating
 - Modified to reflect 3 classes.
- Notifications
 - Notifications required for tax lots in high hazard **and** the wildland-urban interface.
- Appeals
 - Modified to reflect the process change.



County	# Tax Lots in WUI Removed from High Hazard	Percent of All Tax Lots in WUI Removed from High Hazard
Jackson	1224	28%
Hood River	1015	24%
Deschutes	956	22%
Josephine	363	8%
Wasco	155	4%
Umatilla	150	3%
Malheur	105	2%
Union	77	2%
Douglas	52	1%
Wallowa	44	1%
Baker	30	1%
Sherman	24	1%
Lane	19	0%
Crook	18	0%
Klamath	16	0%
Morrow	12	0%
Curry	11	0%
Gilliam	11	0%
Grant	9	0%
Harney	8	0%
Clackamas	3	0%
Jefferson	3	0%
Lake	1	0%
Wheeler	1	0%

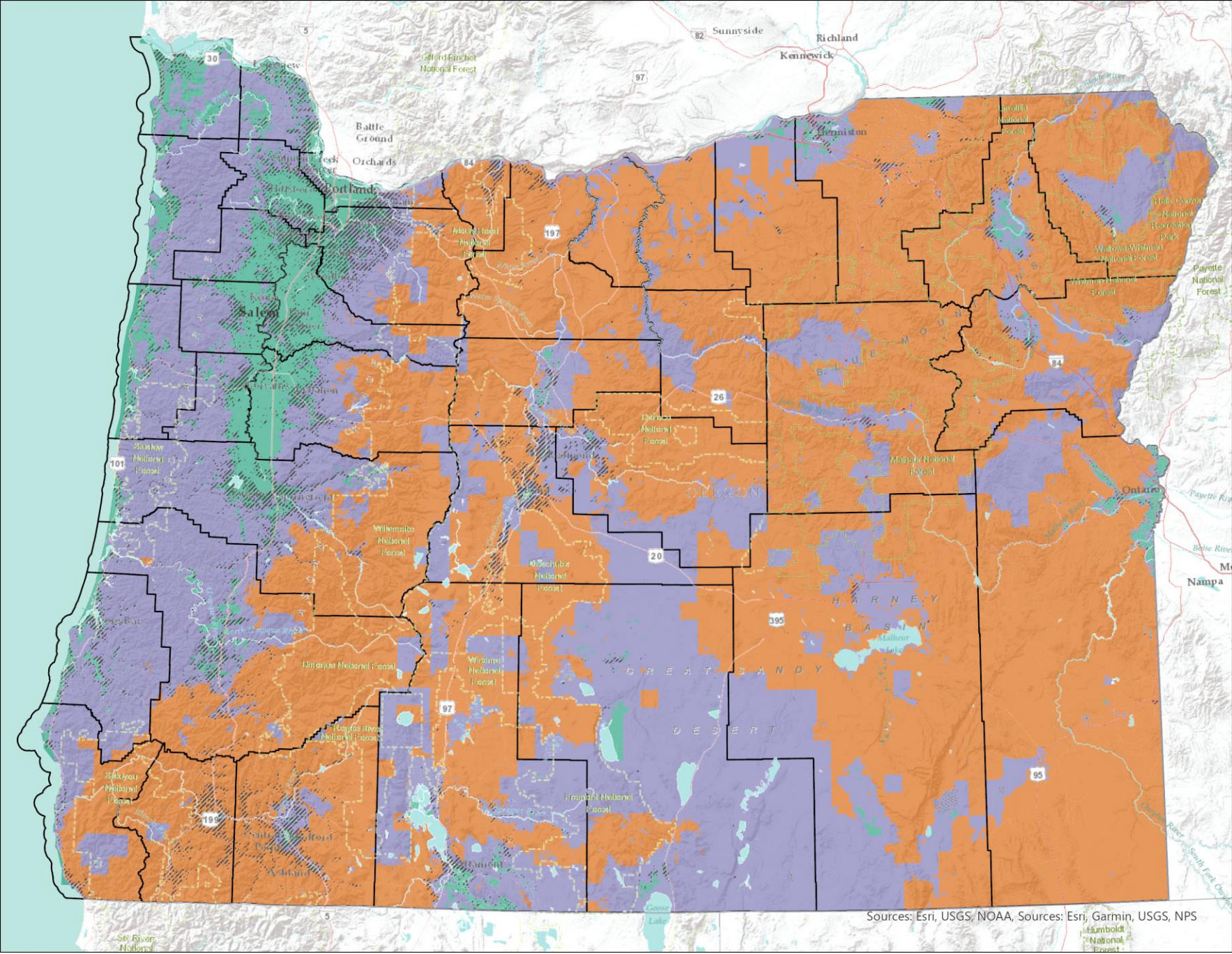
SPATIAL EXTENT OF IRRIGATED AGRICULTURE

- 75% of tax lots in the WUI that dropped from high hazard are in three counties: Jackson, Hood River and Deschutes County

POTENTIAL DRAFT HAZARD MAP

➤ 164,369 tax lots in High Hazard

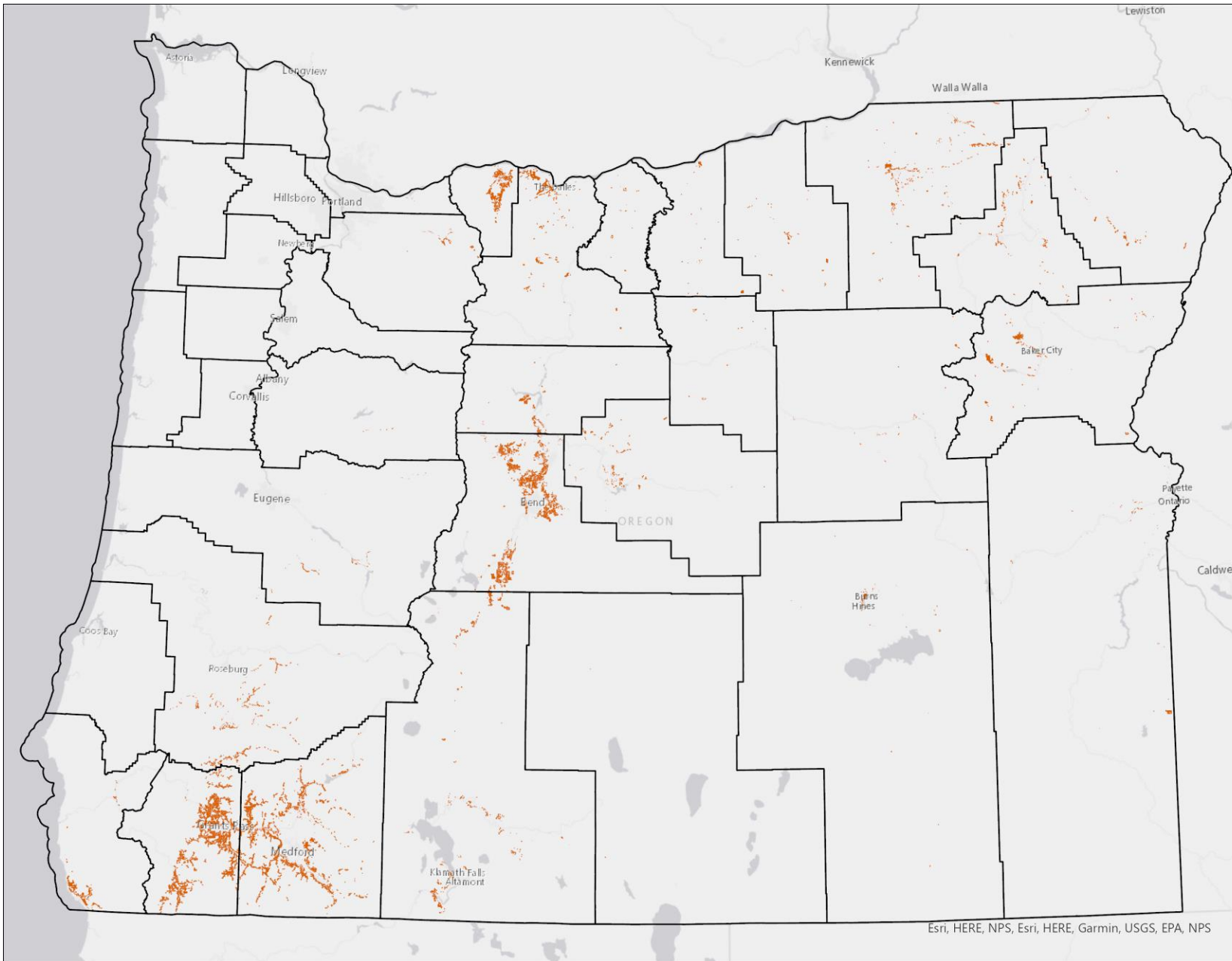
- High Hazard
- Moderate Hazard
- Low Hazard
- WUI




Sources: Esri, USGS, NOAA, Sources: Esri, Garmin, USGS, NPS

NUMBER OF TAX LOTS MEETING DUAL CRITERIA

- 100,284 tax lots are in the WUI and High Hazard under the updated fire hazard data
- Approximately 6% of all tax lots in Oregon



 High Hazard Tax Lot intersecting WUI

 WUI

2024 Wildfire Hazard Map Timeline

MARCH

March to April: Rulemaking Advisory Committee input

APRIL

April to August: County review for anomalies

MAY

JUNE

June: Open House meetings in high hazard communities
June 5 & 6: Board of Forestry may direct ODF to proceed with rule adoption process

JULY

July 1 to August 15: Public comment period on draft rules may be sent to maprules@odf.oregon.gov.
July 15 to August 15: Public input on draft map may be emailed to hazardmap@odf.oregon.gov.

AUGUST

SEPTEMBER

September 4&5: Board of Forestry considers adoption of rules package

OCTOBER

October 1: Tax-lot level Hazard Assessments posted to Explorer. Notifications sent to property owners in high-hazard zones and within the wildland-urban interface (WUI). Appeals process initiated for those receiving notifications and those that haven't.
October 15 until complete: Process appeals and hold hearings

NOVEMBER

DECEMBER

December 1: Appeals process closes, map is final for those not appealing

Board Decision



Recommendation

The Board directs the Department to proceed with the public hearing process and return in September 2024 with the final rule language for Chapter 629, Division 01 and 44.



Questions?

