



# **Board of Forestry Field Tour**

**June 5, 2024**





# Oregon Board of Forestry

## Wednesday and Thursday, June 5-6, 2024

### Tour and Meeting Agenda

Revised  
5/21/24

### Field Tour and Public Meeting Information

**Wednesday, June 5, 2024: Field Tour** – from 8:00 am to 4:00 pm in Sandy, Oregon. Starting point at McMenamins Edgefield located at 2126 SW Halsey St, Troutdale, OR 97060, in the West Parking Lot. Members of the public wishing to join the tour are asked to RSVP by emailing [boardofforestry@odf.oregon.gov](mailto:boardofforestry@odf.oregon.gov) by end of day, Friday, May 31, 2024. Those attending the tour should bring their own lunch and PPE gear, including hardhat, reflective vest, and appropriate footwear. The field tour will highlight the 20-Year Resiliency Strategy, the Federal Forests Restoration Program and provide an opportunity to view an active timber sale.

**Thursday, June 6, 2024: Hybrid Public Meeting** – from 8:00 am to 3:30 pm in Troutdale, Oregon. The Board of Forestry will meet for the regular public business meeting at the McMenamin’s Edgefield, Blackberry Hall – 2126 SW Halsey St, Troutdale, OR 97060. The meeting will be open to the public, allowing for both in-person and virtual attendance. An opportunity for the public to provide live testimony will be available. Instructions for sign-up can be found on our website: <https://www.oregon.gov/odf/board/Pages/bofmeetings.aspx>. Submit written testimony to [boardofforestry@odf.oregon.gov](mailto:boardofforestry@odf.oregon.gov) prior to the meeting, or up to two weeks after the meeting day. Submissions should include the meeting date and agenda item number/topic header with the written submission.

**Virtual Meeting Link:**

<https://www.youtube.com/c/OregonDepartmentofForestry>

### June 5th Field Tour Schedule

	<b>Check-In: McMenamin’s Edgefield</b>	
7:30 am	Parking available – <i>West Parking Lot</i>	
8:00 am	Vehicle assignments	
8:15 am	Departure and travel	
	<b>Stop 1: Timber Park in Estacada</b>	
8:45 am	Welcome and Introductions	<i>Don Everingham, Steve Wilson</i>
9:00 am	20-Year Landscape Resiliency Strategy	
	➤ <i>Shared alignment around the 20-Year Landscape Resiliency Strategy</i>	<i>Cal Mukumoto, Laura Schwitzer</i>
	➤ <i>Strategy overview and next steps</i>	<i>Nathan Beckman</i>
	➤ <i>Assessments, Planning and Implementation</i>	<i>Meta Loftsgaarden, Damon Brosnan, Rob Pentzer</i>
10:15 am	Departure and travel	
	<b>Stop 2: Car Good Neighbor Authority (GNA) Unit 151</b>	
11:00 am	Federal Forest Restoration (FFR) Program Overview	
	➤ <i>FFR Program Statewide Overview</i>	<i>Kyle Sullivan-Astor</i>
	➤ <i>Mt Hood National Forest Collaborative and Wasco County Forest Collaborative</i>	<i>Andrew Spaeth</i>
	➤ <i>Technical assistance, science support and research informing consensus</i>	<i>Andrew Merschel</i>

**Oregon Department of Forestry**  
2600 State St Salem OR, 97310  
<https://www.oregon.gov/odf>



# Oregon Board of Forestry

## Wednesday and Thursday, June 5-6, 2024

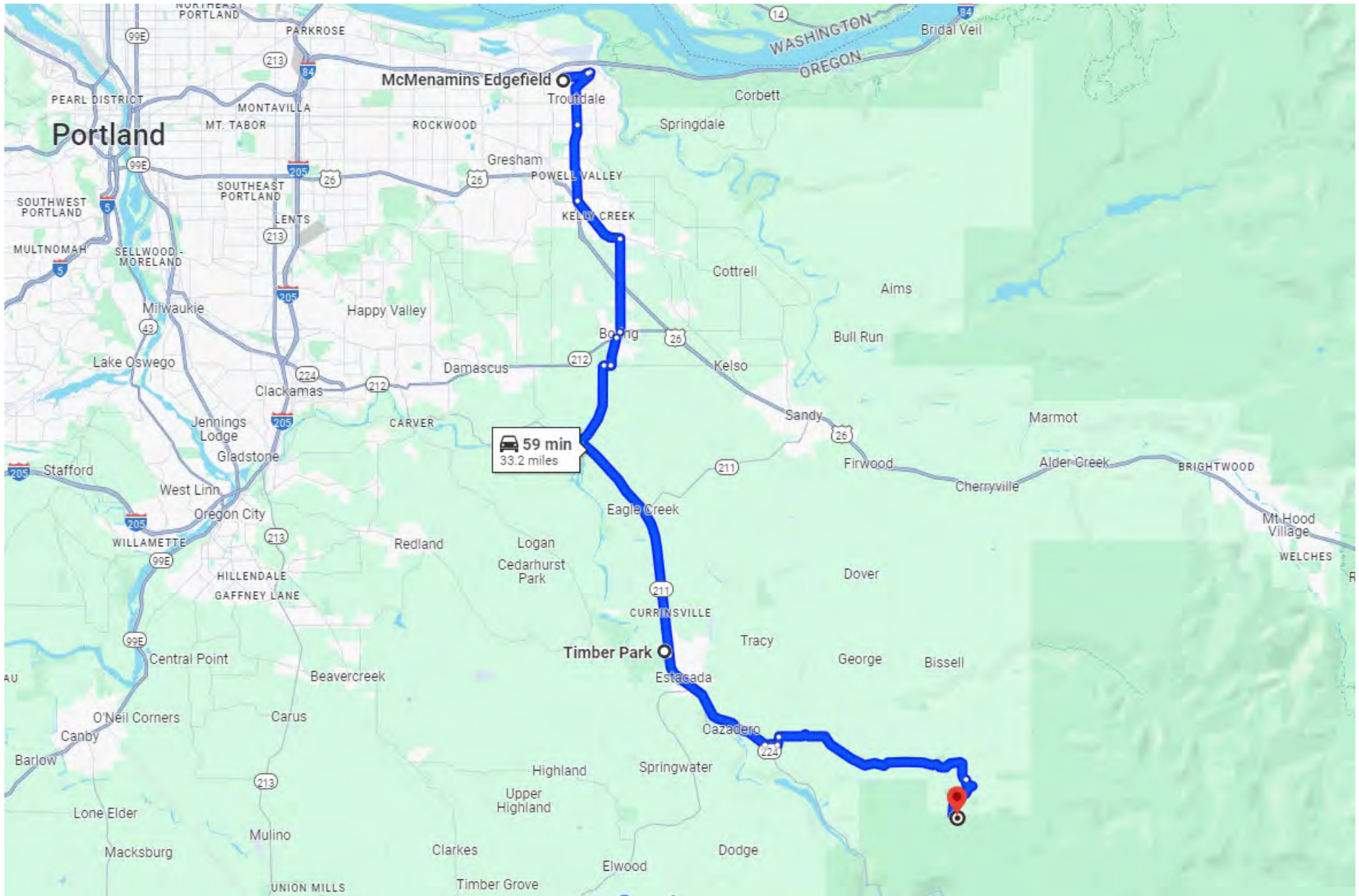
### Tour and Meeting Agenda

Revised  
5/21/24

	➤ <i>The Management Framework: Purpose and need for the projects, relationship with ODF-FFR Program</i>	<i>Phil Monsanto</i>
11:45	Q & A	
12:15 pm	<b>Lunch</b>	
1:00 pm	Departure and travel	
	<b>Stop 3: Car Good Neighbor Authority (GNA) Unit 170</b>	
1:15 pm	Timber sale overview and status	<i>Jennifer Erdmann</i>
1:30 pm	Timber sale purchaser	<i>Neil Kissler</i>
	➤ <i>Forest operator</i>	<i>Ben Hainley</i>
	➤ <i>Forest sector trade association perspective</i>	<i>Andy Geissler</i>
1:45 pm	Oregon Mass Timber Coalition Economic Development Administration grant update	<i>Marcus Kauffman</i>
2:00 pm	Q & A	
2:30 pm	Field tour wrap-up	<i>Chair Kelly</i>
2:45 pm	Departure and travel	
3:45 pm	<b>Return; field tour concludes</b>	

**Public Participation Note:**

- There will be no online option for participation, however, a recording will be posted on the ODF Board meeting webpage that highlights the tour stops.
- Members of the public who wish to attend should RSVP by emailing [boardofforestry@odf.oregon.gov](mailto:boardofforestry@odf.oregon.gov) no later than end of day, Friday, May 31, 2024.
- Individuals must sign a waiver to participate in the field tour.
- There is limited space available to ride with ODF staff, and members of the public should be prepared to drive their own vehicle. Members of the public may be asked to carpool with one another in the event that there is an excessive number of vehicles participating in the field tour.
- Dress appropriately for local weather and a moderate amount of walking over uneven terrain. Close-toed shoes are recommended.
- Personal Protective Equipment (PPE) is required to attend the final stop listed. ODF staff will have limited quantities on-hand, and it is recommended that members of the public who wish to attend the final stop bring their own PPE, which will need to consist of a hardhat and reflective safety vest.
- Bring your own personal lunch and water.
- Restrooms will be available at the start, end, and at stops 1 and 2. There will be no access to restroom facilities during the 3rd and final stop.
- The scheduled times listed on the field tour schedule are approximate. Oregon Department of Forestry has the discretion to modify the tour presenters, stop locations, tour route or timing if unforeseen circumstances occur.
- Individuals who may require special accommodations for the tour should contact the Board Administrator at [boardofforestry@odf.oregon.gov](mailto:boardofforestry@odf.oregon.gov), at least 72 hours prior to the event date.

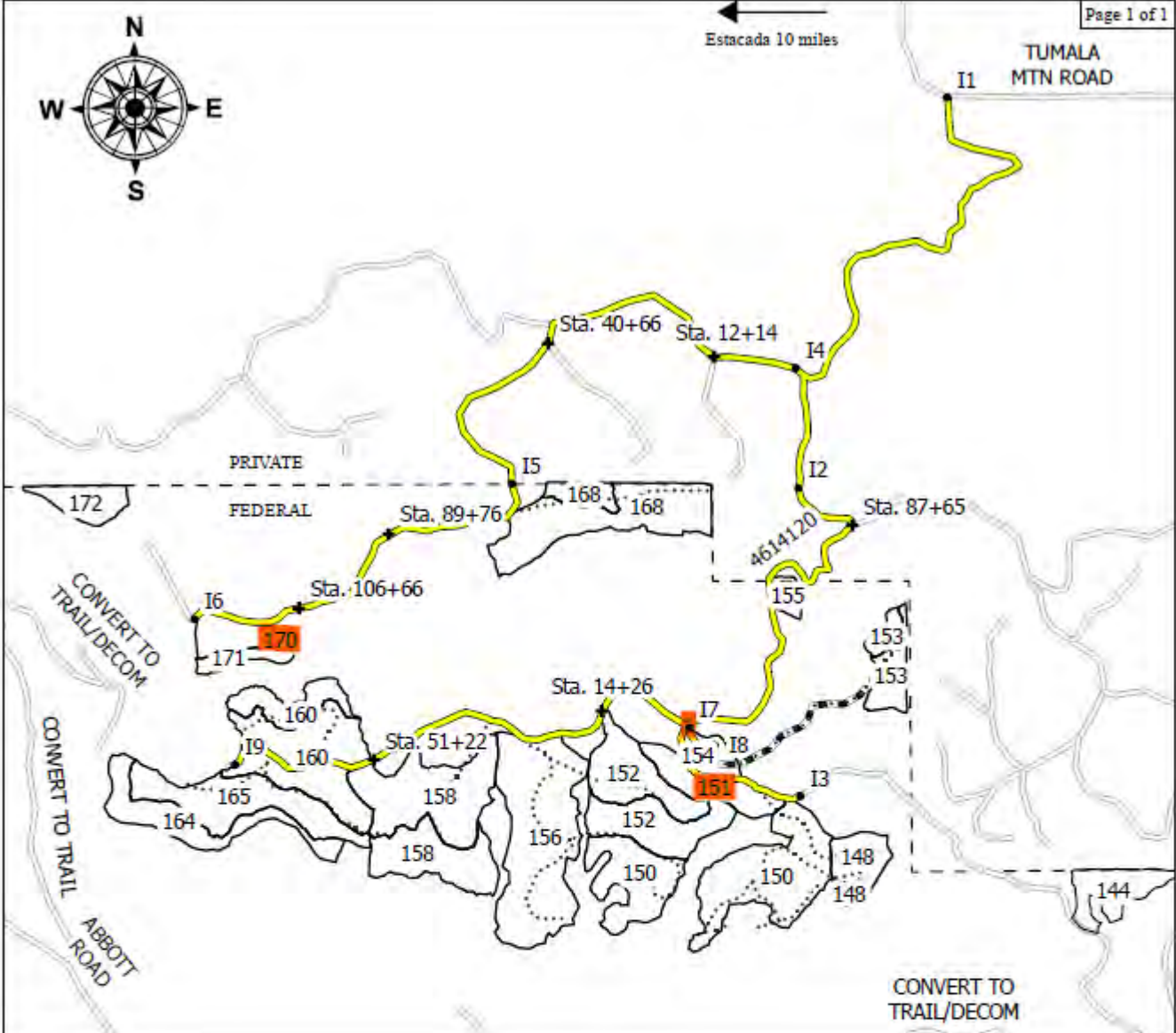


**Tour Map**

Start and End at McMennamins Edgefield – Troutdale, OR - 2126 SW Halsey St, Troutdale, OR 97060

Stop #1 – Timber Park – Estacada, OR - 30878 NW Evergreen Way, Estacada, OR 97023

Stop #2 and #3 – Car GNA Timber Sale – Mt. Hood National Forest (See Car GNA Vicinity Map and Agenda for locations)

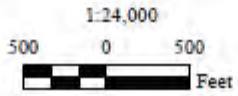


**Legend**

- Car**
- - - Unit Boundary
- Harvest Boundary
- Roads**
- Roads
- ..... Proposed Temp Roads
- ▬ Existing Temp Roads
- ▬ Haul Route
- Project points**
- Point
- + Station
- Boundaries**
- - Property Line

**EXHIBIT "A"**  
 Vicinity Map  
 OF TIMBER SALE CONTRACT NO. NC-341-2023-GF7421-01  
 CAR GNA  
 T4S R5E Sec 15, 16, 17, 21, 22 and 23  
 CLACKAMAS COUNTY, OREGON

This product is for informational use and may not have been prepared for or be suitable for legal, engineering or survey purposes. Users of this information should review or consult the primary data and information sources to ascertain the usability of this information.



UNIT	NET ACRES
144 (PC)	15.3
148 (PC)	13.9
150 (PC)	67.3
151 (PC)	15.5
152 (SW)	45.5
153 (PC)	12.7
154 (PC)	8
155 (PC)	4.5
156 (PC)	62.5
158 (PC)	64
160 (PC)	54.8
164 (PC)	22.9
165 (SW)	32.8
168 (PC)	45
170 (SW)	11.3
171 (PC)	5.8
172 (PC)	11.1
<b>TOTAL</b>	<b>492.9</b>

<b>Oregon Department of Forestry</b> Board of Forestry	1. WORK PROJECT/ACTIVITY  <b>June 2024 BOF Tour</b>	2. LOCATION (IF APPLICABLE)  <b>Troutdale, Timber Park Estacada, Car GNA Timber sale</b>	3. UNIT  <b>NWOA / North Cascades District</b>
<b>JOB HAZARD ANALYSIS (JHA)</b>	4. NAME OF ANALYST  <b>Don Everingham</b>	5. JOB TITLE  <b>NWOA Director</b>	6. DATE PREPARED ___X_NEW___REVISIED/ 05/20/2024
7. TASKS/PROCEDURES	8. HAZARDS	9. ABATEMENT ACTIONS Engineering Controls * Substitution * Administrative Controls * PPE	
<b>Walking through woods, Forest roads and trails, vicinity of active forest operations</b>	<ul style="list-style-type: none"> <li>• Tripping hazards</li> <li>• Environmental Hazards (wildlife, bees, plants, etc.)</li> <li>• Overhead hazards (snags)</li> <li>• Active harvest operations</li> </ul>	<ul style="list-style-type: none"> <li>• Ensure Proper Foot attire and hearing protection/safety glasses.</li> <li>• Pathways will be clear of any tripping hazards, if not fully secured before tour begins</li> <li>• Carry medical first aid for fast treatment if needed</li> <li>• Carry phone and radios in poor service areas</li> <li>• Provide a safety talk at the beginning of the tour to cover the basics of safety hazards.</li> </ul>	
<b>Operating vehicles-general</b>	<ul style="list-style-type: none"> <li>• Breakdowns</li> <li>• Flat tires</li> <li>• Collisions</li> <li>• Flying projectiles</li> </ul>	<ul style="list-style-type: none"> <li>• Check vehicle for a first aid kit with proper inventory and medications that are current.</li> <li>• Make sure the vehicle is equipped with warning signs and/or flares and the hazard flashers work.</li> <li>• Vehicle should have an ODF radio and CBs in some vehicles.</li> <li>• Vehicles carrying tools in the interior should have a safety cage in place. All hand tools must be equipped with guards, first aid kits and fire extinguisher should be securely mounted.</li> <li>• Vehicles must be equipped with chock blocks of appropriate size.</li> <li>• All drivers are required to attend defensive driving before operating the vehicle.</li> <li>• Make sure you have enough fuel to get you to your destination and back again.</li> <li>• Perform daily walk around inspection.</li> <li>• Observe posted speed limits.</li> <li>• Drive at a speed that permits full control of the vehicle</li> </ul>	

		<ul style="list-style-type: none"> <li>• Drive at a speed which accounts for weather, visibility, traffic, road conditions and safe stopping distances.</li> <li>• Do not operate vehicle when drowsy or tired.</li> </ul>
<b>Parking</b>	<ul style="list-style-type: none"> <li>• Break not securely set</li> <li>• Parking next to hazards</li> <li>• Busy Parking areas</li> </ul>	<ul style="list-style-type: none"> <li>• Set parking brake and don't leave vehicle unattended while running. Leave in park or appropriate gear if engine is off.</li> <li>• Use extreme caution and utilize spotter when parking or pulling out of congested areas such as parking lots or parking in public areas</li> <li>• Always walk around your vehicle and look for hazards prior to pulling out of a parking spot.</li> </ul>
<b>Emergencies</b>	<ul style="list-style-type: none"> <li>• Incidents (vehicle accidents, personal injury incidents, etc.)</li> </ul>	<p>Develop emergency procedure plan for tour route locations. To include:</p> <ul style="list-style-type: none"> <li>• Dispatch coordination &amp; procedure</li> <li>• Communication device(s) – Radio, cell phone, walkie talkie or GPS device.</li> <li>• Fire extinguisher (if not already in vans)</li> <li>• ODF vehicles, one as the lead and one as the chase vehicles will be supporting field tour.</li> <li>• Most driving routes and destinations will be in good cell service, but radios or CBs will be on hand if needed.</li> <li>• The tour stop POCs are aware of timeline and route of field tour, and can assist if there is an emergency by calling for medical, fire, or police assistance.</li> </ul>
<b>Personal Protective Equipment</b>	<b>Type</b>	List what was provided: Hard hats and safety vests are available for Board Members and members of the public if needed.

**Job Hazard Analysis Instructions**

The JHA shall identify the work project or activity, the name of employee(s) writing the JHA, the date(s) of development, and the name of the appropriate supervisor approving it. The supervisor acknowledges that employees have read and understand the contents, have received the required training, and are qualified to perform the work project or activity.

**Blocks 1, 2, 3, 4, 5, and 6:** Self-explanatory.

**Block 7:** Identify all tasks and procedures associated with the work project or activity that have potential to cause injury or illness to personnel and damage to property or material.

**Block 8:** Identify all known or suspect hazards associated with each respective task/procedure listed in block 7. For example:

- a. Research past accidents/incidents
- b. Research directives, training materials or other appropriate literature.
- c. Discuss the work project/activity with participants
- d. Observe the work project/activity
- e. A combination of the above

**Block 9:** Identify appropriate actions to reduce or eliminate the hazards identified in Block 8. Abatement measures listed below are in the order of the preferred abatement Method.

- a. Engineering Controls: For example, ergonomically designed tools, equipment, and furniture.
- b. Substitution: For example, switching to high flash point, non-toxic solvents.
- c. Administrative Controls: For example, limiting exposure by reducing the work schedule; establishing appropriate procedures and practices.
- d. Personal Protective Equipment: For example, using hearing protection when working with or close to portable machines (chain saws, rock drills, portable water pumps)
- e. A combination of the above.
- f. Include Field Medical/Emergency Situation procedures, where needed, as defined in the Safety Plan

**Block 10:** The JHA must be reviewed and approved by a supervisor/safety manager.

**Blocks 11 and 12:** Self-explanatory

**Job Hazard Analysis (JHA) Acknowledgment**

We, the undersigned work leader and crew members, acknowledge participation in the development of this JHA (as applicable). We have thoroughly discussed and understand the provisions of this document:

**SIGNATURE/DATE**

**SIGNATURE/DATE**

*Don Everingham*

05/30/2024

Lead Worker

_____	_____
_____	_____
_____	_____
_____	_____

Distribution:

1. Return original to supervisor
2. Supervisor provide a new/updated copy to each of the following:
  - A. Office JHA notebook
  - B. All Offices in District
  - C. District Forester
  - D. Safety Committee Chair
3. Notify all district supervisors via e-mail of new/updated JHA
4. Supervisors are responsible to distribute to employees, as needed



# Stop 1

## TIMBER PARK IN ESTACADA





The Oregon Department of Forestry leads the 20-Year Landscape Resiliency Strategy to improve forests and rangelands to reduce wildfire risk. ODF developed the plan with private, local, state, and federal partners to target about 13 million high-risk acres.

**VISION: Healthy and resilient landscapes that support Oregon’s social, economic, and ecological needs for future generations.**

The plan uses many tools like thinning forests, prescribed burns, removing invasive species, and restoring lands after fires. The work aims to help economic development and steward lands that can endure extreme fire, drought, and pests.

The partners use a shared stewardship model – large scale, cross-boundaries, joint priorities – to align federal, state, and private investments. It requires long-term commitment to succeed. The model will sustain partner engagement and include more voices.

### SHARED STEWARDSHIP PARTNERS



The plan sets criteria for priority landscapes using:

- » Forest and wildland health symptoms and high wildfire risk indicators
- » Wildland-urban interface
- » Local knowledge and experts

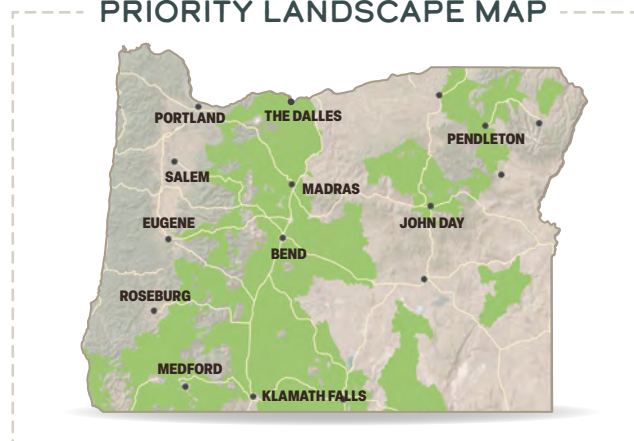
Using this information, ODF and the partners created the state’s priority landscape map (below). Partners will use the map to align priority actions and investments to the places of greatest need.

ODF and its partners launched the strategy at the 2023 Inaugural Landscape Resiliency Summit. The partners shared strong support and commitment for this unified approach to:

- » Reduce wildfire risk.
- » Improve ecosystems.
- » Protect water resources, wildlife habitat, and recreational opportunities.
- » Bolster the economy.
- » Increase the pace and scale of land management and stewardship.

During the summit others joined the launch, including Tribes, community groups, scientists, partnerships and collaboratives, and local groups who will be part of the ongoing work.

### PRIORITY LANDSCAPE MAP



## NEXT STEPS

Coming out of the summit, partners agreed on some next steps needed to achieve the strategy's goals. The next steps are:

- » **Partnerships.** The partners will broaden and strengthen relations with Tribes, local communities, the private sector, and collaborative groups to enhance cross-boundary work and clear communication.
- » **Plan.** The partners will use a decision-support framework to align priorities, work and investments.
- » **Execute.** Once aligned they ensure work happens in the right place, at the right scale, with the right tools.
- » **Dashboard.** Partners will create a unified tracking system and dashboard to show investments, actions, and results.

## LEADING THE WAY

ODF has and continues serving forestry needs across the state. The agency grounds its success in a staff of forestry professionals, wildlife biologists, water quality experts, and natural resource specialists. This team will speed up the work using this unified strategy.

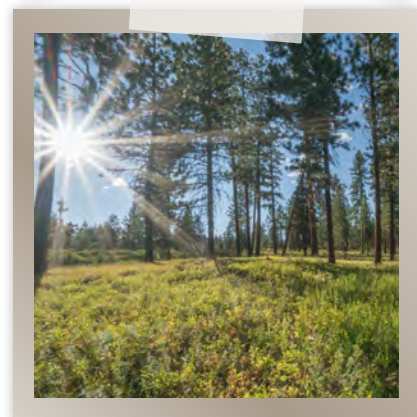
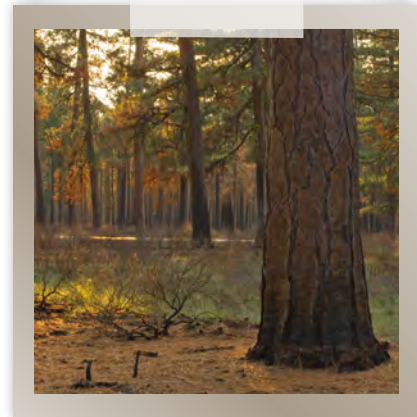
ODF has three main state-funded programs that contribute to the strategy.

- » Landscape Resiliency Program
- » Small Forestland Grant Program
- » Federal Forest Restoration (FFR) Program

Since 2021, the state has invested over \$40 million through these programs. To multiply the state investment the agency manages similar federally funded programs.

In 2024 the three main programs directed \$13.1 million of Oregon's general fund and \$1.4 million of federal funds to speed up work on over 100,000 acres. An example of gaining alignment is through the agency's FFR program. According to the Council of Western State Foresters 2023 Report, FFR leads the nation in managing federal forests using the Good Neighbor Authority. This authority allows the state to work on federal lands, making the work happen more quickly.

Recently, ODF captured tens of millions of Bi-partisan Infrastructure Law and Inflation Reduction Act (BIL/IRA) and other funds. These funds help urban forestry, forest health, community wildfire defense, and reducing wildfire risk. Federal agencies received most BIL/IRA funds to align investments with state projects to reduce wildfire risk, a great benefit to Oregon. The work will need to happen over decades. As ODF puts the strategy into practice, it will make every dollar and every acre count.



# Stop 2

## CAR GOOD NEIGHBOR AUTHORITY (GNA) UNIT 151



“Increasing Pace,  
Scale, and Quality”



# FEDERAL FOREST RESTORATION PROGRAM UPDATE

2016–2024 ACTIVITIES AND OUTCOMES

FACT SHEET 28 • JANUARY 2024

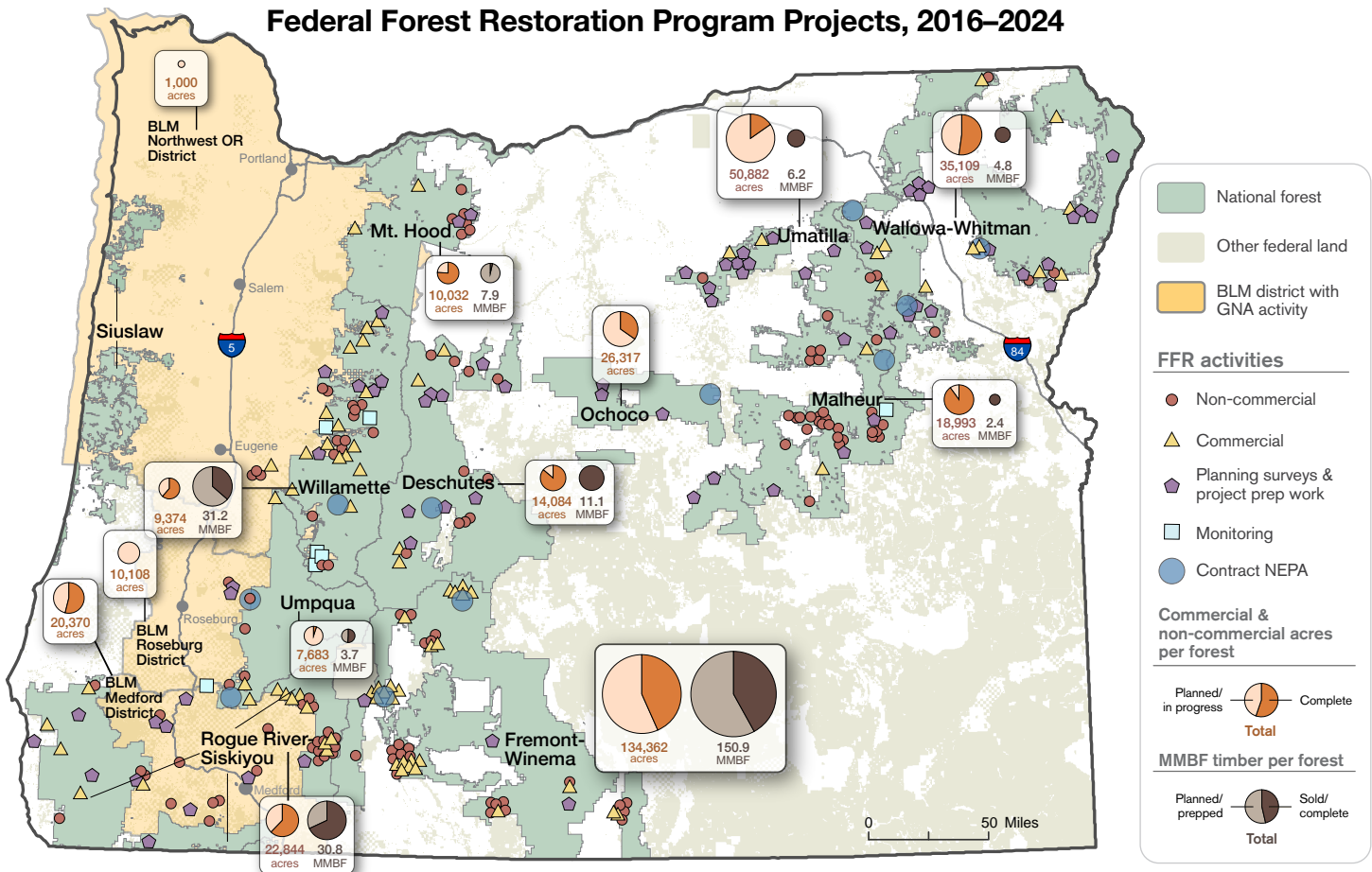


Oregon Department of Forestry’s (ODF) Federal Forest Restoration (FFR) Program looks forward to playing a role in implementing Oregon’s 20-year Landscape Resiliency Strategy,<sup>1</sup> which has identified over five million acres of forestland as a top priority for treatment due to high wildfire risk, and other ecological and social factors. 57% of these priority geographies are under federal jurisdiction. The FFR Program’s federal partnership and work with forest collaboratives will play a key role in helping realize the strategy.

The work of the FFR Program is also guided by the Oregon state law ORS 526.275 which created “...the policy of the state to pursue projects under the [Good Neighbor Authority] that increase timber harvest volume, contribute to job creation, reduce wildfire risks to all lands, improve wildlife habitat and watershed health, and stimulate local economies.”

For this biennium, the FFR Program will be releasing four fact sheets roughly every six months containing program updates, activities and outcomes instead of one comprehensive monitoring report released prior to the end of the biennium. After June 30, 2025, the program will publish a comprehensive report that captures all activities within the 2023-25 biennium.

## Federal Forest Restoration Program Projects, 2016–2024



<sup>1</sup> <https://online.anyflip.com/xodvh/gipd/mobile/index.html>

# ODF's work on federal lands in Oregon:

The Federal Forest Restoration (FFR) Program uses the Good Neighbor Authority (GNA) as a tool, in addition to other tools such as Cooperative Agreements, to work with federal forest management agencies in Oregon. The GNA is a tool in the toolbox to achieve the State's vision for federal forestlands.<sup>2</sup>

**40 agreements** – with – **10 national forests** (31 agreements) | **3 BLM districts** (6 agreements) | **Forest Service PNW Regional Office** (3 agreements)

### Restoration service projects

**Activities** on **10 national forests, 3 BLM districts** covering **186,270 acres**

**including**

- Planning surveys & project preparation work:**
  - Wildlife, botany, heritage, or other resource surveys
  - Remote sensing, stand exams, or other forest inventory work
  - Cruising, tree marking, unit layout, or other project preparation

7,171 planned | 23,097 in progress | 76,674 complete | **106,942 acres**
- Non-commercial work:**
  - Non-commercial fuels reduction, thinning, or forest health treatments
  - Prescribed fire
  - Wildlife habitat restoration or improvement
  - Stream enhancement or fish passage
  - Invasive/noxious weed treatments

9,419 planned | 26,077 complete | 42,361 in progress | **77,857 acres**
- Monitoring work:**
  - Post-implementation vegetation management and stream restoration monitoring

820 in progress | 650 complete | **1,420 acres**

**16,590 planned** | **66,279 in progress** | **103,401 complete**

### Commercial Projects

**73 Sales** on **9 national forests**

24 complete, 18 sold, 31 planned

over an anticipated **57,760 acres** and **248.1 MMBF** (million board feet)

**8,307 complete** | **43.4 complete**

35,344 planned | 14,109 sold | 122.6 planned | 82.1 sold

### Contract NEPA projects

**14 Projects** on **9 national forests**

10 complete, 2 in progress, 2 planned

over an anticipated **102,142 acres** during

**35,324 complete<sup>3</sup>** | **84,818 in progress or planned**

**2019:** 3 completed | **2020:** 2 completed | **2021:** 1 completed | **2022:** 3 completed | **2023:** 1 completed

<sup>2</sup> <https://www.oregon.gov/odf/working/documents/achieving-oregons-vision-for-federal-forestlands-report.pdf>

<sup>3</sup> Completed contract NEPA acres is 2,000 acres less than the previous report (December 2022) due to a correction made to the 42 Road CE from 5,000 acres to 3,000 acres

RESULTS:

# 2023-25 Biennium Update & Budget:

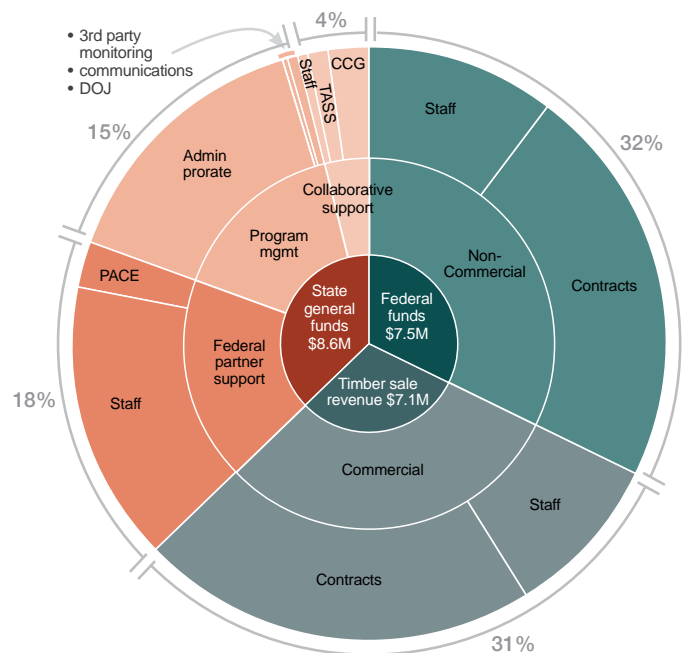
## Highlights for the current 2023–25 biennium include:

- Implementation of the newly passed Senate Bill 872 (2023)
- Expansion of staffing from 29 to 44 positions<sup>4</sup>
- Planning to complete over 80,000 Contract NEPA<sup>5</sup> acres this biennium, which is double the amount completed since the program's inception

\$23.3M Total

» \$8.6M (37%) State

» \$14.6M (63%) Federal



The FFR Program team at their winter 2023 workshop

The Program is expected to continue to leverage a significant amount of federal funds, either federal appropriations (including the Infrastructure Investment and Jobs Act or Inflation Reduction Act funds) or GNA timber sale revenue to achieve our mission and adhere to our guiding legislation. The majority of these federal funds are used for contracts or agreements for restoration planning, implementation or monitoring.

The state general fund portion of the budget provides support for forest collaboratives, NEPA planning support in areas with little timber value, and FFR Coordinators and Unit Foresters. All of these are ineligible for federal funds or have limited federal funding available, in the case of NEPA planning work.

## Legislative Update

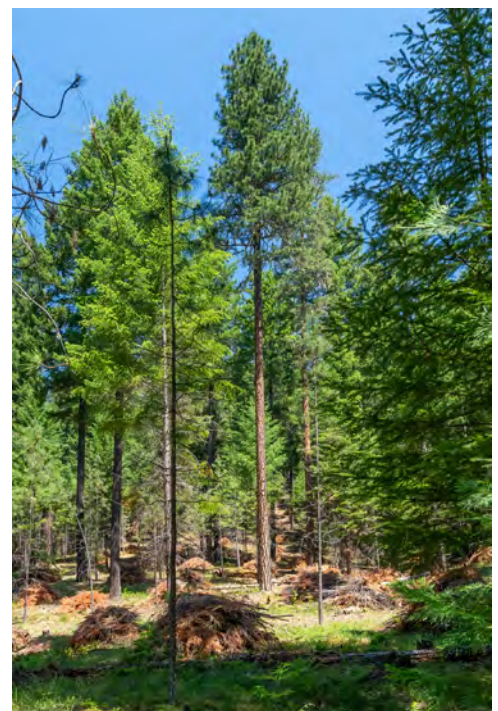
Senate Bill 872 passed the Oregon Legislature in the 2023 Regular Session and called on the Oregon Department of Forestry to "...endeavor to further shared stewardship to decrease wildfire risk across Oregon through increased partnership with federal agencies to expand activities under the [GNA]...through:

- Increased forest thinning
- Reducing ladder fuels and other hazardous fuel loading
- Restoring meadowland
- Increasing biomass utilization
- Increasing post-disturbance recovery and restoration activities"

This legislation reaffirms the commitment on behalf of the Oregon Legislature that the work of the FFR Program is relevant and necessary to achieve the state's goals.

## Leading the Way

Oregon is a leader among western states in the utilization of GNA. According to a Council of Western State Foresters report released in November 2023,<sup>6</sup> ODF has treated more non-commercial and commercial acres under GNA than any other western state in the Nation. In addition to the program's performance related to improving forest health, the FFR Program is contributing to rural economic development goals. The FFR Program's state investments (~\$3M/yr.) and GNA timber sales supported an annual average of 323 jobs and contributed \$30.5 million to the regional economy in the previous biennium.



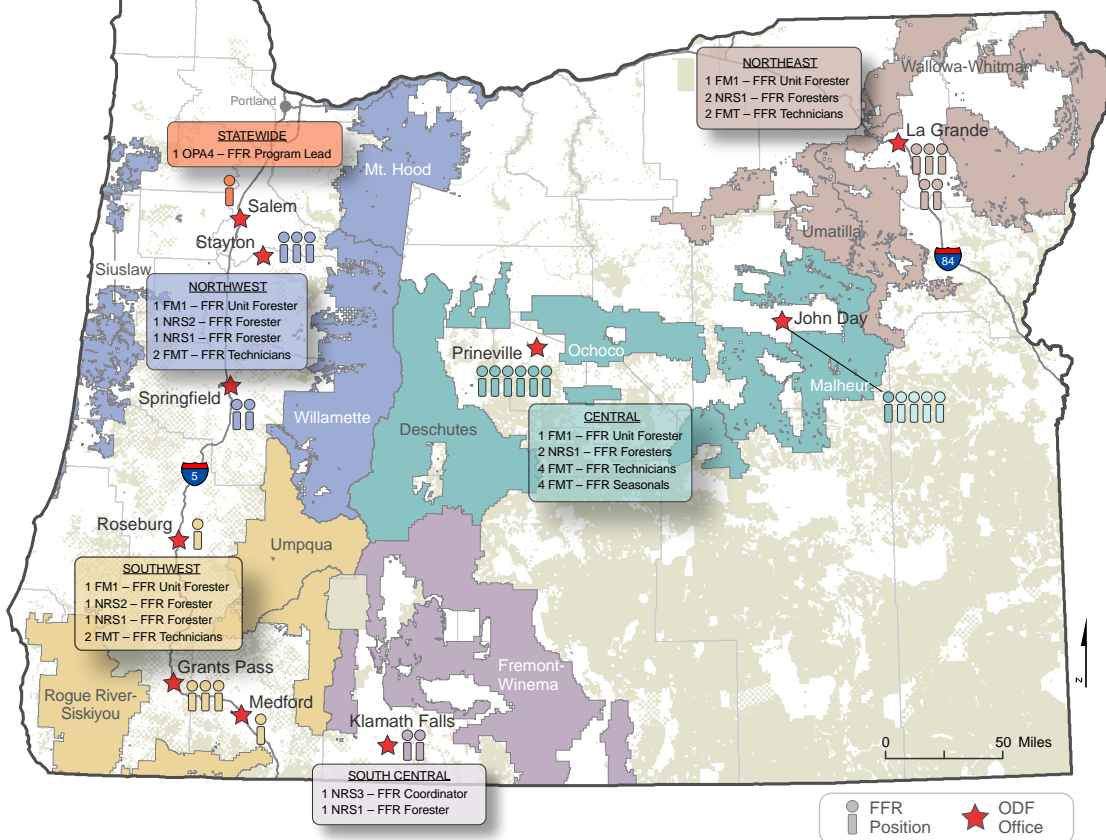
The Pinegrass fuels and habitat improvement project on the Willamette National Forest

<sup>4</sup> Pending Department of Administrative Services review and approval

<sup>5</sup> Contract NEPA is a term for the state procuring a 3rd party contractor and leveraging in-house expertise to take on the comprehensive NEPA planning process required to move a restoration project from inception to shovel-ready; ensuring the project adheres to all the applicable federal laws and utilizes as little federal resources as necessary.

<sup>6</sup> [https://www.westernforesters.org/sites/default/files/2023-11/CWSF%20GNA%20Activities%20and%20Accomplishments\\_November%202023.pdf](https://www.westernforesters.org/sites/default/files/2023-11/CWSF%20GNA%20Activities%20and%20Accomplishments_November%202023.pdf)

## Current Staffing and Biennial Targets



**Statewide**  
• 1 position

**Northeast**

- 5 positions
- 42,300 Contract NEPA acres
- 8,700 NEPA survey/project prep acres
- 605 non-commercial acres
- 2 road maintenance miles

**Northwest**

- 5 positions
- 140 Contract NEPA acres
- 400 NEPA survey/project prep acres
- 8 non-commercial acres
- 859 commercial acres
- 22,500 MBF volume sold
- 32 road maintenance miles

**Central**

- 11 positions
- 100 Contract NEPA CE acres
- 2,000 NEPA survey/project prep acres
- 625 non-commercial acres
- 727 commercial acres
- 9 road maintenance miles

**Southwest**

- 5 positions
- 7,000 Contract NEPA acres
- 7,500 NEPA survey/project prep acres
- 300 non-commercial acres
- 1,219 commercial acres
- 8,000 MBF volume sold
- 8 road maintenance miles

**South Central**

- 2 positions
- 38,210 Contract NEPA acres
- 600 non-commercial acres
- 5,468 commercial acres
- 29,93 MBF volume sold

<b>84,000 acres</b> contract NEPA	<b>24,000 acres</b> NEPA survey/ project prep	<b>2,100 acres</b> non-commercial treatments	<b>8,900 acres</b> commercial treatments	<b>77,000 MBF</b> volume sold	<b>51 miles</b> deferred road maintenance
--------------------------------------	---	--	--	-------------------------------------	---

### PROJECT SPOTLIGHT: FOUR CORNERS

In July 2022, the 66-acre Four Corners GNA commercial thinning project area was completed on the Umatilla National Forest. The success of this project served as a springboard for larger restoration efforts on the forest. These include the 425-acre Davis GNA and the 506-acre Elbow GNA commercial restoration projects, 335 acres of non-commercial fuels reduction work, assisting with the planning of a future restoration project planning assistance via through the National Environmental Policy Act (NEPA) process, and additional commercial restoration GNA projects still in the planning phases.

From the FFR Program’s inception in 2013 through 2023, the state has invested \$1,352,434 in restoration work on the Umatilla National Forest for grant funds supporting the Umatilla and Northern Blues Forest Collaboratives, NEPA planning support through the FFR Program’s Planning Assistance and Categorical Exclusion (PACE) initiative, and staff and crew personnel time supporting the preparation and implementation of restoration work on the Forest.



Before treatment

After treatment

### PROJECT SPOTLIGHT: GM

The GM GNA project on the Willamette National Forest is currently being implemented and involves 220 acres of commercial thinning, 4.3 miles of road improvement, and 1.8 miles of fire line construction.

This project was a part of the Green Mountain Project Environmental Impact Statement, signed in July 2017, which identified forested stands to be treated that were overstocked, and lacked age-class diversity and associated habitat diversity. The main goals of this project are to allow for the production of forest products to provide jobs and fiber for the local economy, increase stream-side vegetative diversity, and increase forest species and structural diversity.



Contributors: Kyle Sullivan-Astor, Michael Coughlan, Naomi Serio, Autumn Ellison. Funded by Oregon Department of Forestry.



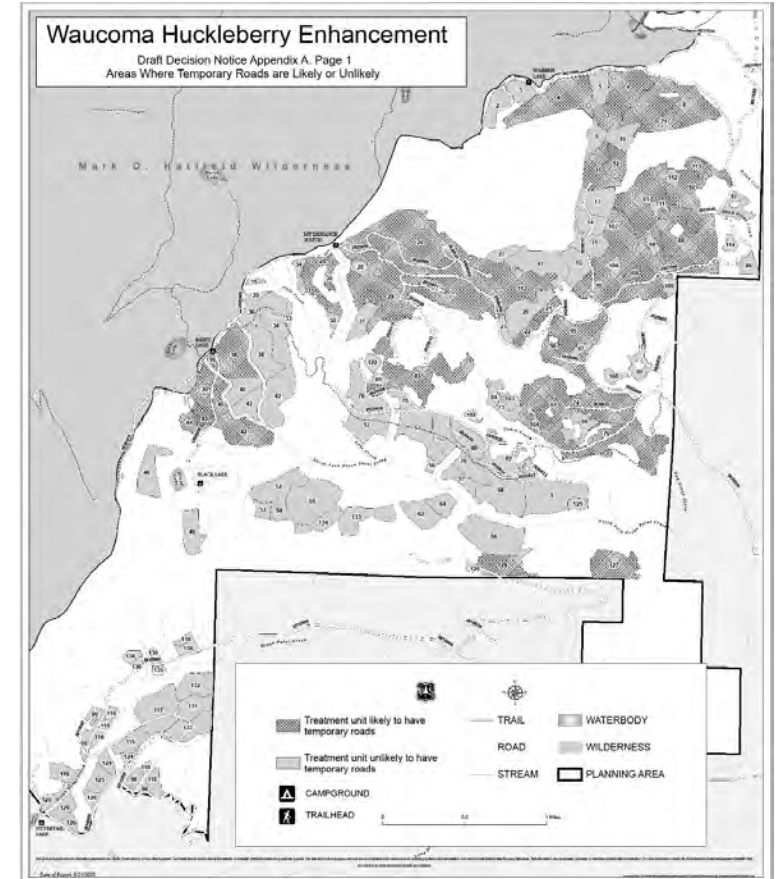


"...restoring ecological resiliency in and near the national forest while sustaining and enhancing socioeconomic benefits in area communities."



### Key Priorities

- Community Outreach
- Wildfire Preparedness
- Defensible Space Initiative
- Zones of Agreement



### Forest Restoration Projects

- Polallie-Cooper
- Lava Restoration Project
- Waucoma Huckleberry Enhancement Project
- Gibson Insect and Disease



# Wasco County FOREST Collaborative

## Highlights

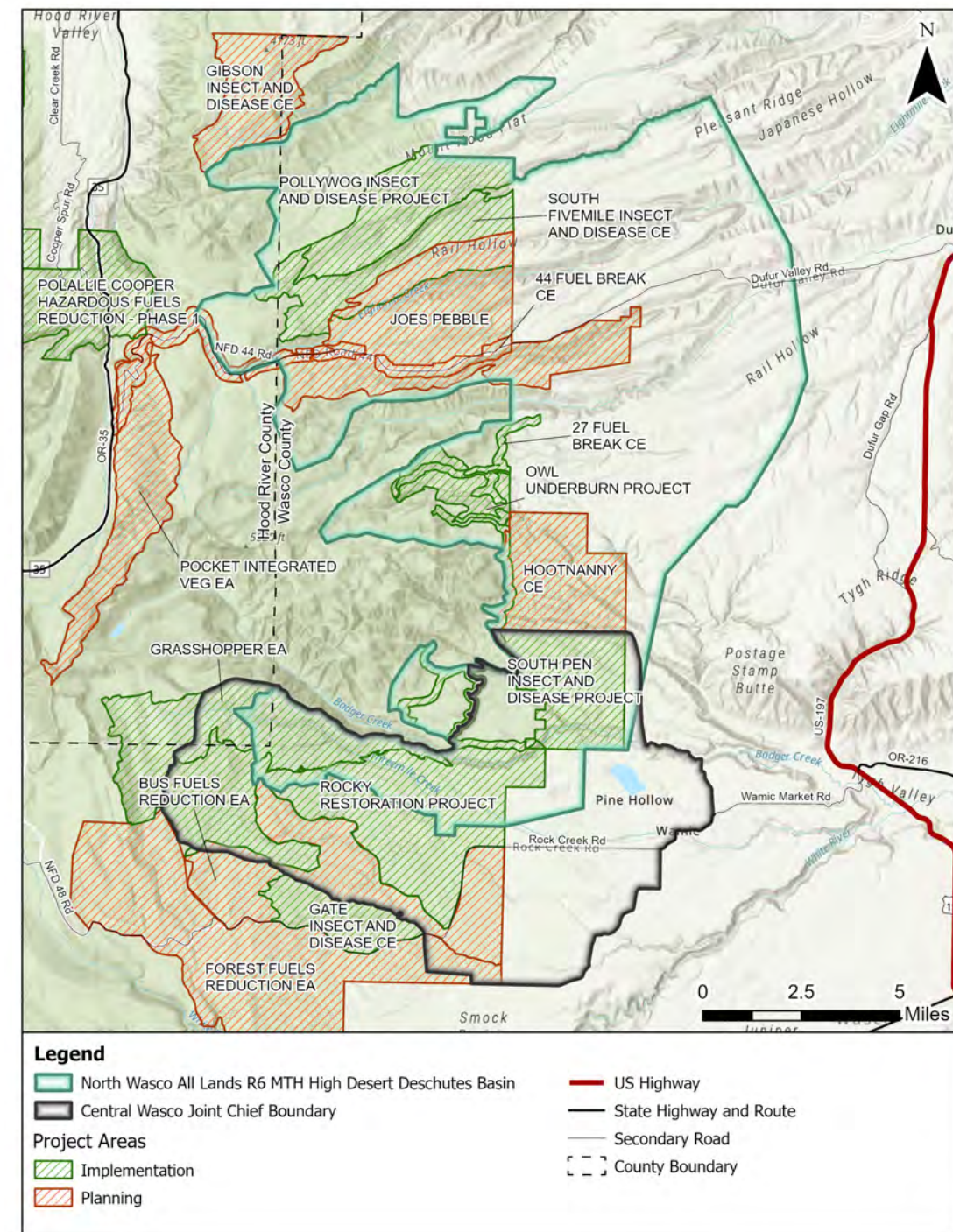
### Governance & Membership

- 11 Steering Committee Members appointed by Wasco County Board of Commissioners

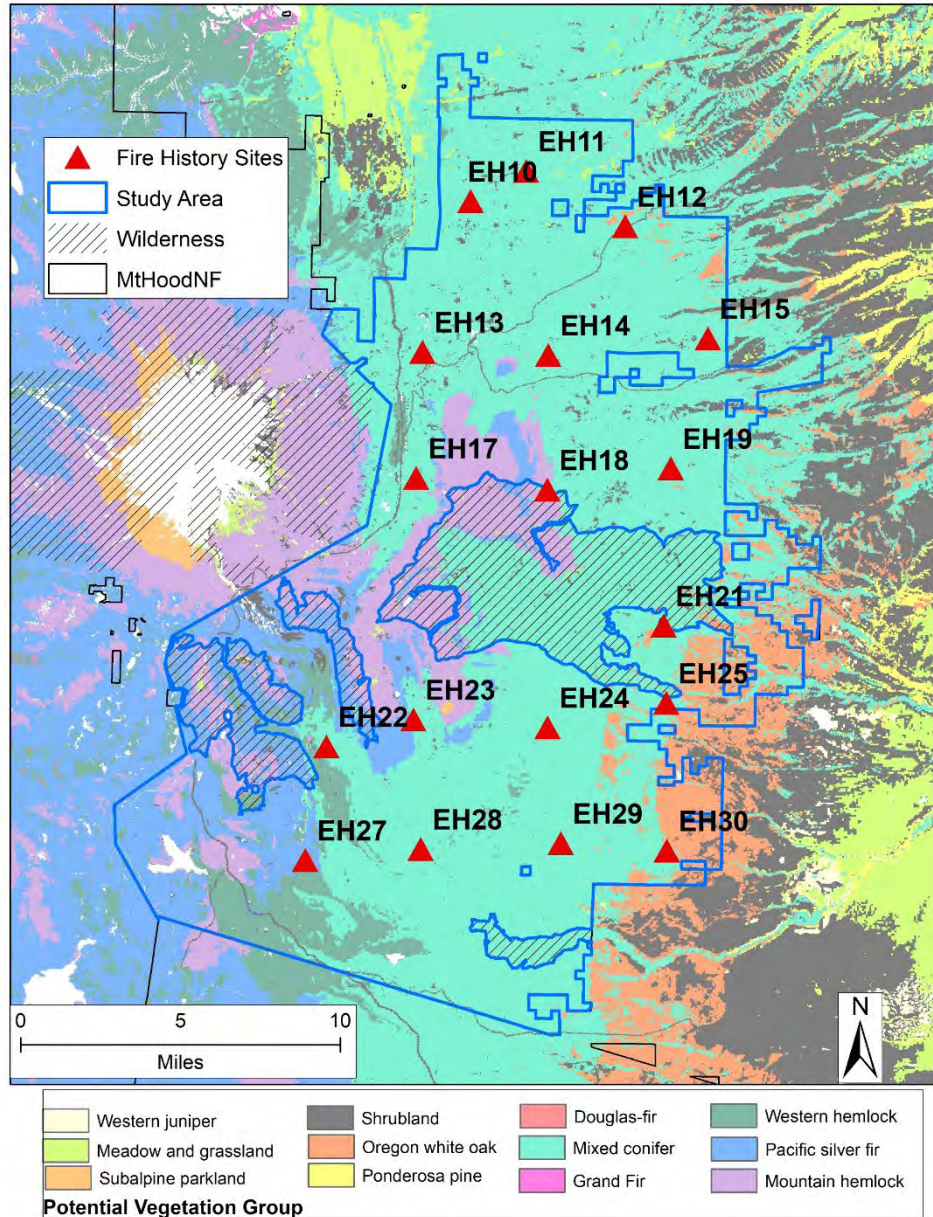
### Dry Forest Restoration and Wildfire Risk Reduction

- Planned 7 projects in partnership with Mt Hood National Forest that encompass more than 20,000 acres of restoration treatments.
- Secured 2 Joint Chiefs Awards totaling more than \$5M to implement fuels reduction across federal, state, and private lands.

For more information contact [wascoforest@gmail.com](mailto:wascoforest@gmail.com).



# Map 1 - Fire History Reconstruction Sites



**18 Sites**

**~ 4 miles between sites**

**Sites were moved for accessibility, to avoid recent fire closures, and because of difficult access near The Dalles Watershed**

warm, dry sites (< 25 in ppt)

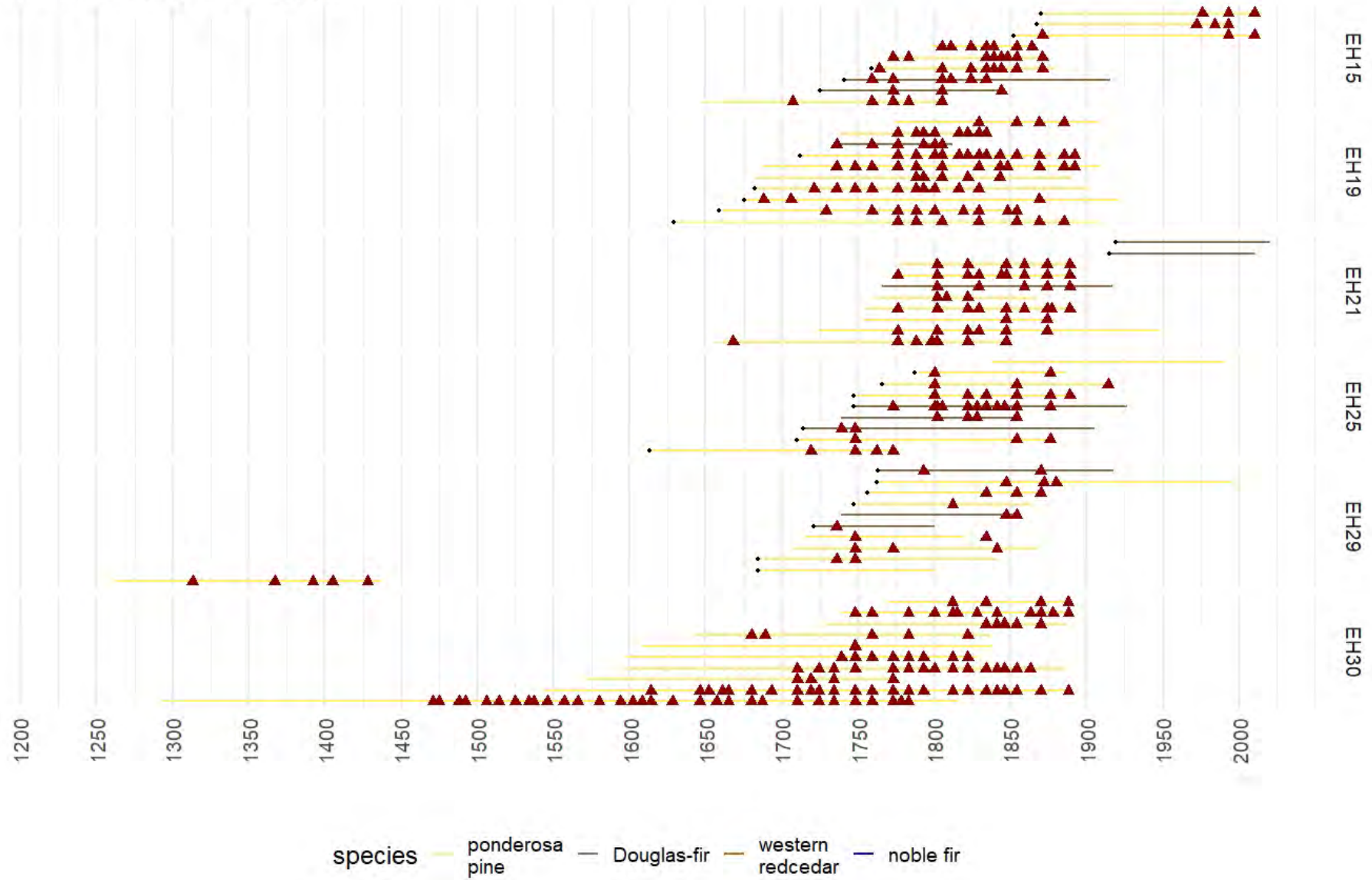


Figure 1. – Fire history at six warm, dry sites (EH15, EH19, EH21, EH25, EH29, EH30). We removed cross sections from 10-15 fire scarred stumps or logs at each site. Each tree we sample has a timeline corresponding to the earliest and most recent annual ring present on the sample. The years of historical fires evidenced by cambial fire scars are indicated by red triangles. Prior to 1900, there were 8-13 fires per century in warm dry environments.

warm, moist sites (37-43 in ppt)

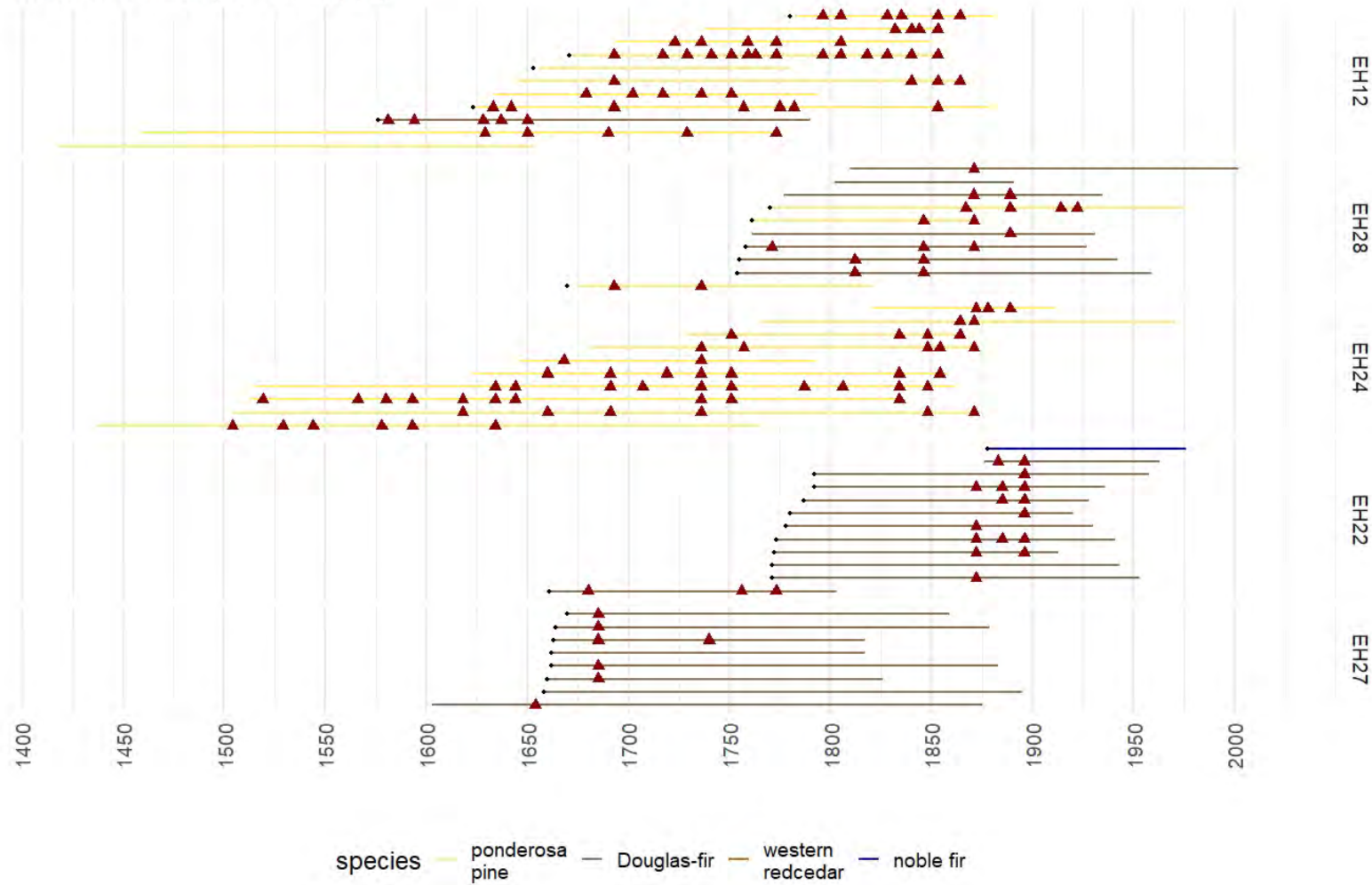


Figure 2. – Fire history at five warm, moist sites (EH12, EH28, EH24, EH22, EH27). We removed cross sections from 10-15 fire scarred stumps or logs at each site. Each tree we sampled has a timeline corresponding to the earliest and most recent annual ring present on the sample. The years of historical fires evidenced by cambial fire scars are indicated by red triangles. Frequency in warm, moist environments likely varied with landscape position or adjacency to warm, dry versus cool, wet environments.

- Warm, moist fire history sites that are adjacent to warm, dry sites had 7-12 fires a century.
- Warm, moist fire history sites that are adjacent to cool, wet environments (i.e. a long distance from ponderosa dominated forest) had long intervals without fire and some periods with frequent fire. Fire frequency was non-stationary over time.

cool, wet sites (>47 in ppt)

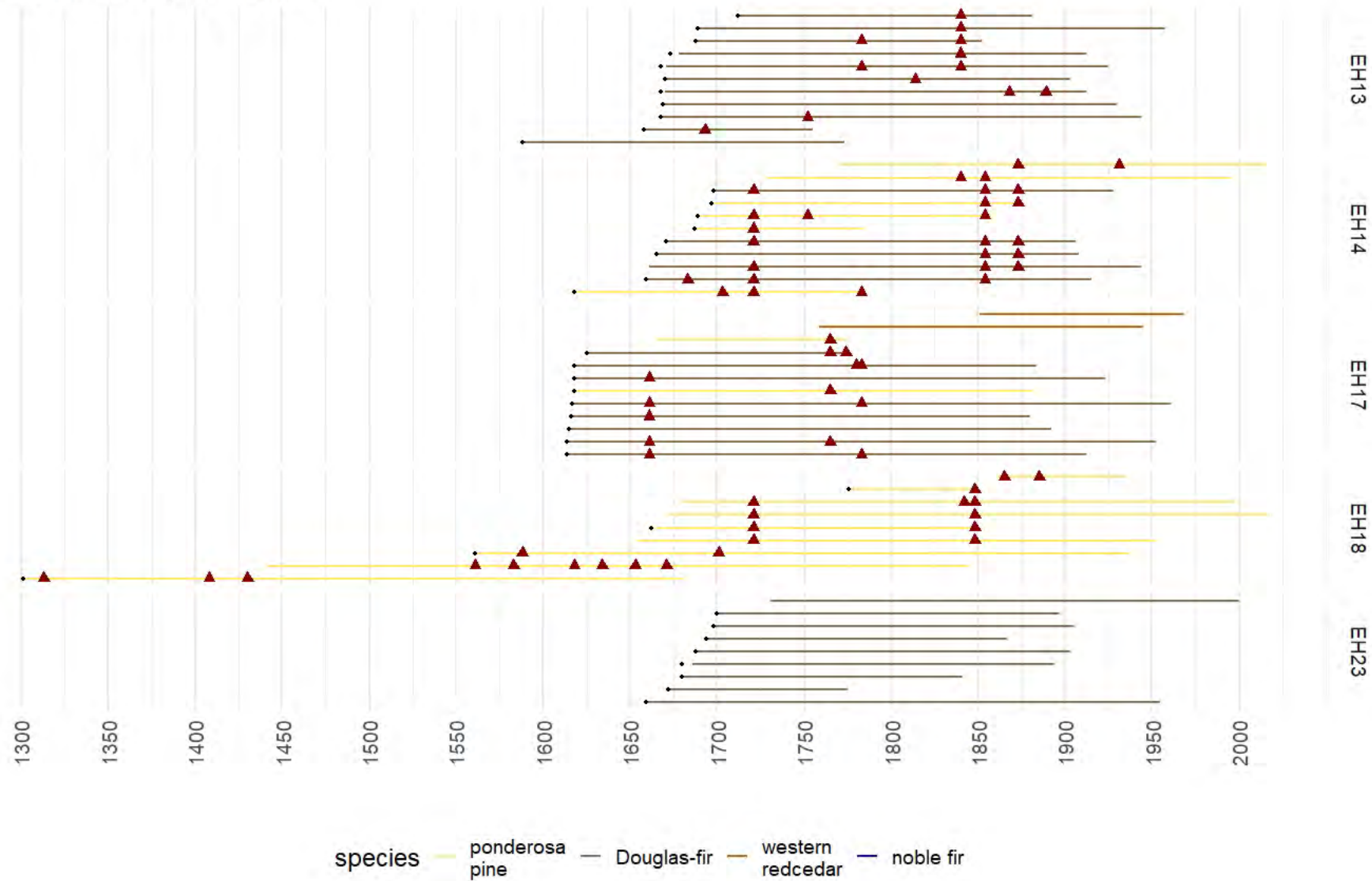
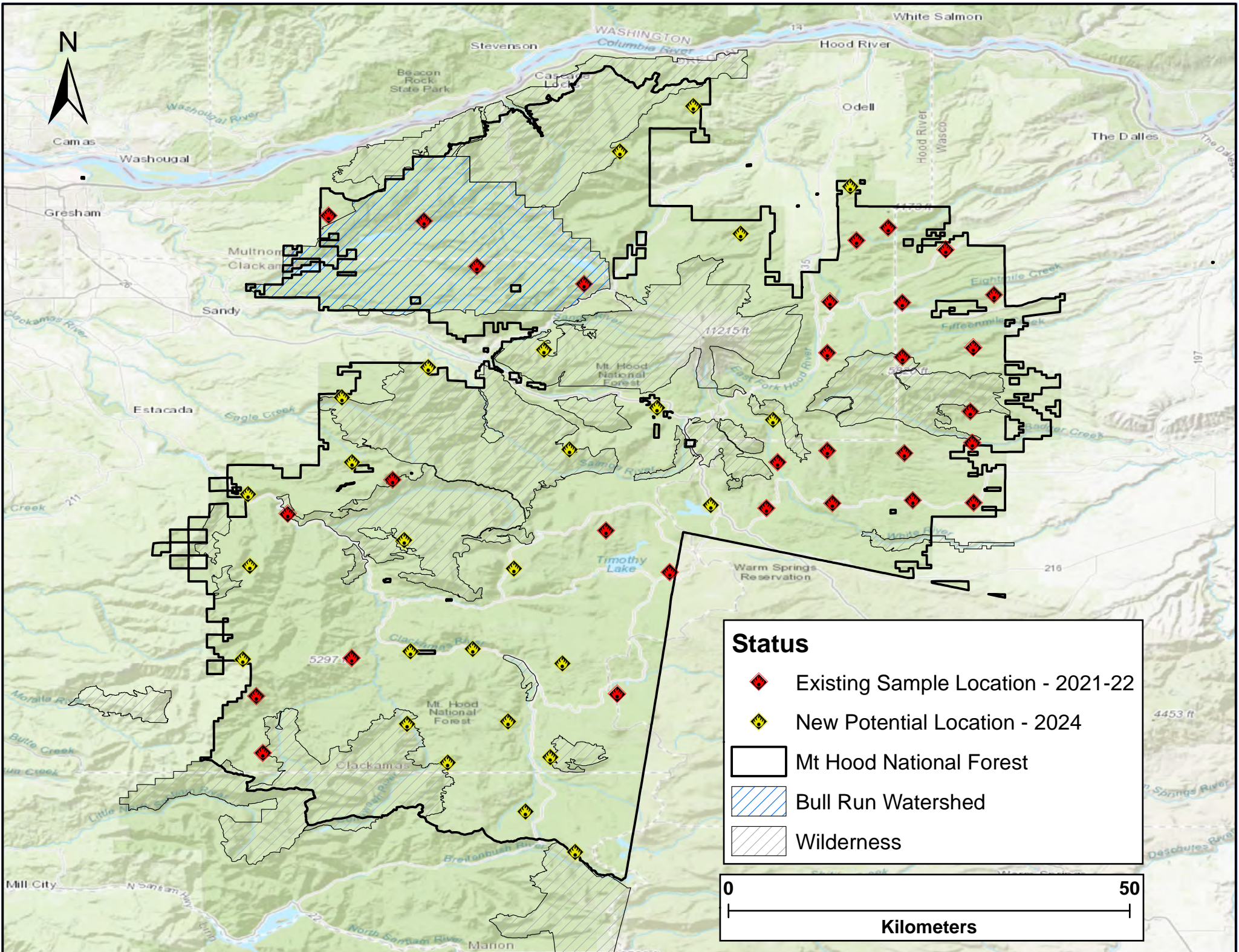


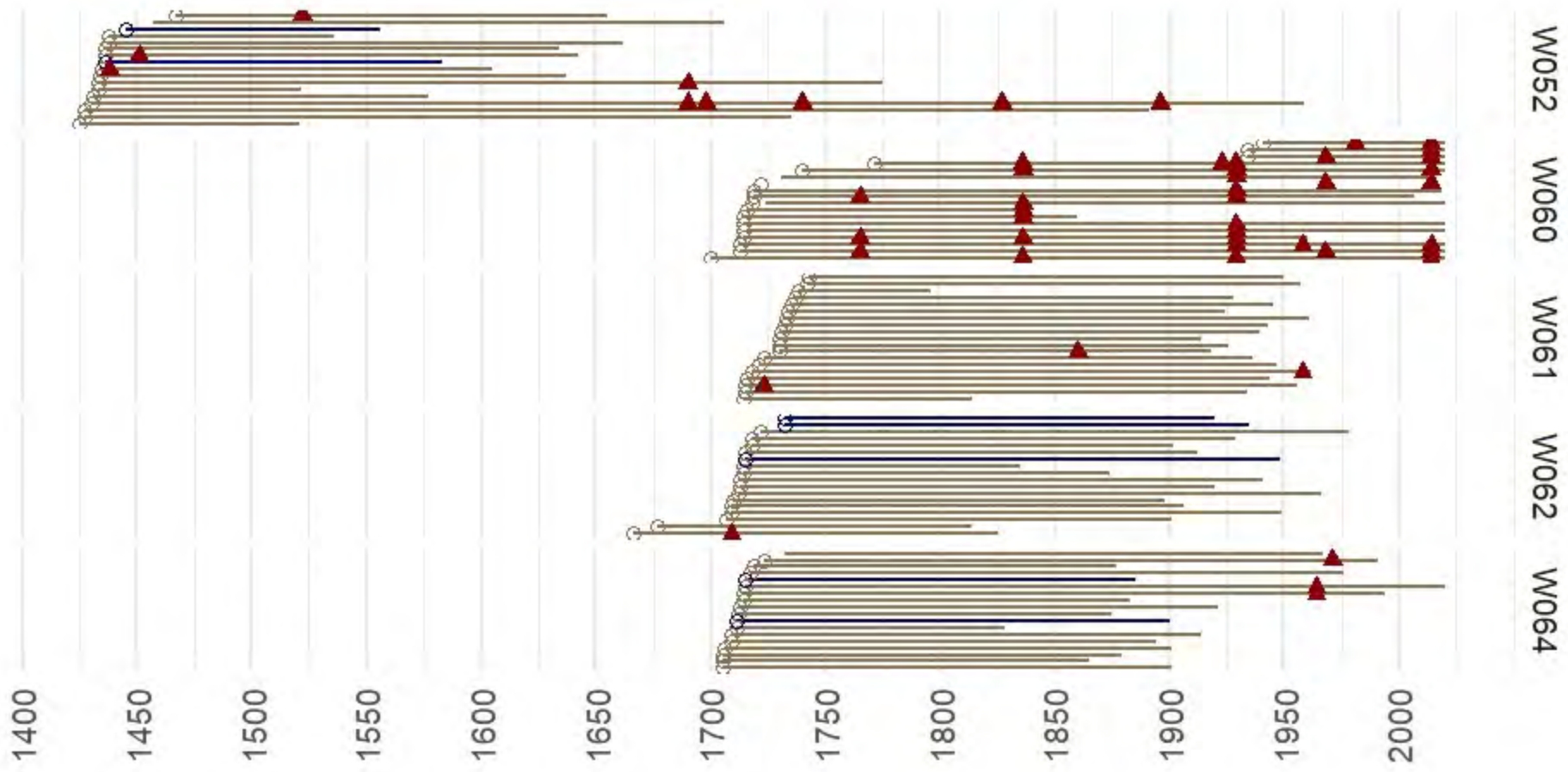
Figure 3. – Fire history at five cool, moist to cool, wet sites (EH13, EH14, EH17, EH18, EH23). We removed cross sections from 10-15 fire scarred stumps or logs at each site. Each tree we sampled has a timeline corresponding to the earliest and most recent annual ring present on the sample. The years of historical fires evidenced by cambial fire scars are indicated by red triangles. Prior to 1900, fire frequency was quite variable in cool, wet environments. There were long (i.e. >100 years) periods where we did not detect evidence of fire. There were also periods with much higher fire frequency (i. e. 3 fires in 40 years). Fire frequency was non-stationary over time.



**Status**

- Existing Sample Location - 2021-22
- New Potential Location - 2024
- Mt Hood National Forest
- Bull Run Watershed
- Wilderness

0 50  
Kilometers



○ Douglas-fir   
 △ western hemlock



# ODF-West Zone Mt Hood History and North Clack IVM Description



## History of relationship

- ODF-FFR Program Planning Assistance and Categorical Exclusion (PACE) investments for stand exams in North Clack planning area in 2017, Lidar in 2020, and Hootnanny CE in 2024
- Forest collaborative grant to Clackamas Stewardship Partners (2020)
  - Total FFR Program investment (PACE, collaborative grants, and staff) in Mt Hood (east and west zone) since 2017 - \$749,875
- GNA relationship started with first GNA agreement initiated in 2021
  - Agreement contained Car GNA timber sale; ODF prepared and administered the timber sale contract
  - Contract awarded in May 2023 to Interfor
  - 493 acres, 7.5 MMBF, bid value \$3.4M
  - Revenue reinvested in reforestation, brush disposal, roads in project area and high priority restoration needs on the forest
  - In order to create a sustainable program of work, reinvestment planned for future 'A to Z' or comprehensive projects (e.g. two 70 acre CEs on Zigzag RD)
  - Similar to what is occurring on other forests (Fremont-Winema, Willamette, and others)

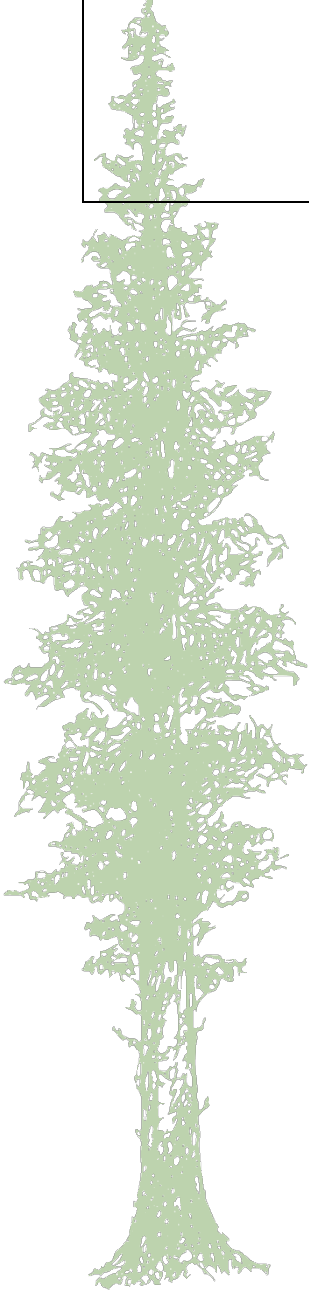
## North Clack Integrated Vegetation Project

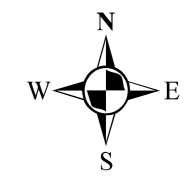
The North Clack Integrated Vegetation Project’s Decision Notice was signed in January 2020. The planning area is located within the Clackamas River Ranger District, and covers approximately 25,000 acres. The interdisciplinary team reviewed existing conditions within the planning area against desired conditions specified in the Forest Plan as amended.

Below is a summary of the purpose and need with proposed actions for vegetation management to meet them. Acre numbers that are slashed indicate the proposed acres based on Alternative 2, versus what was finally decided as a result of red tree vole findings. Red tree voles are considered a survey and managed species. These were found in portions of potentially treated areas and met the survey protocol prerequisite, and that is why there is a decrease under the Decision Notice to treat.

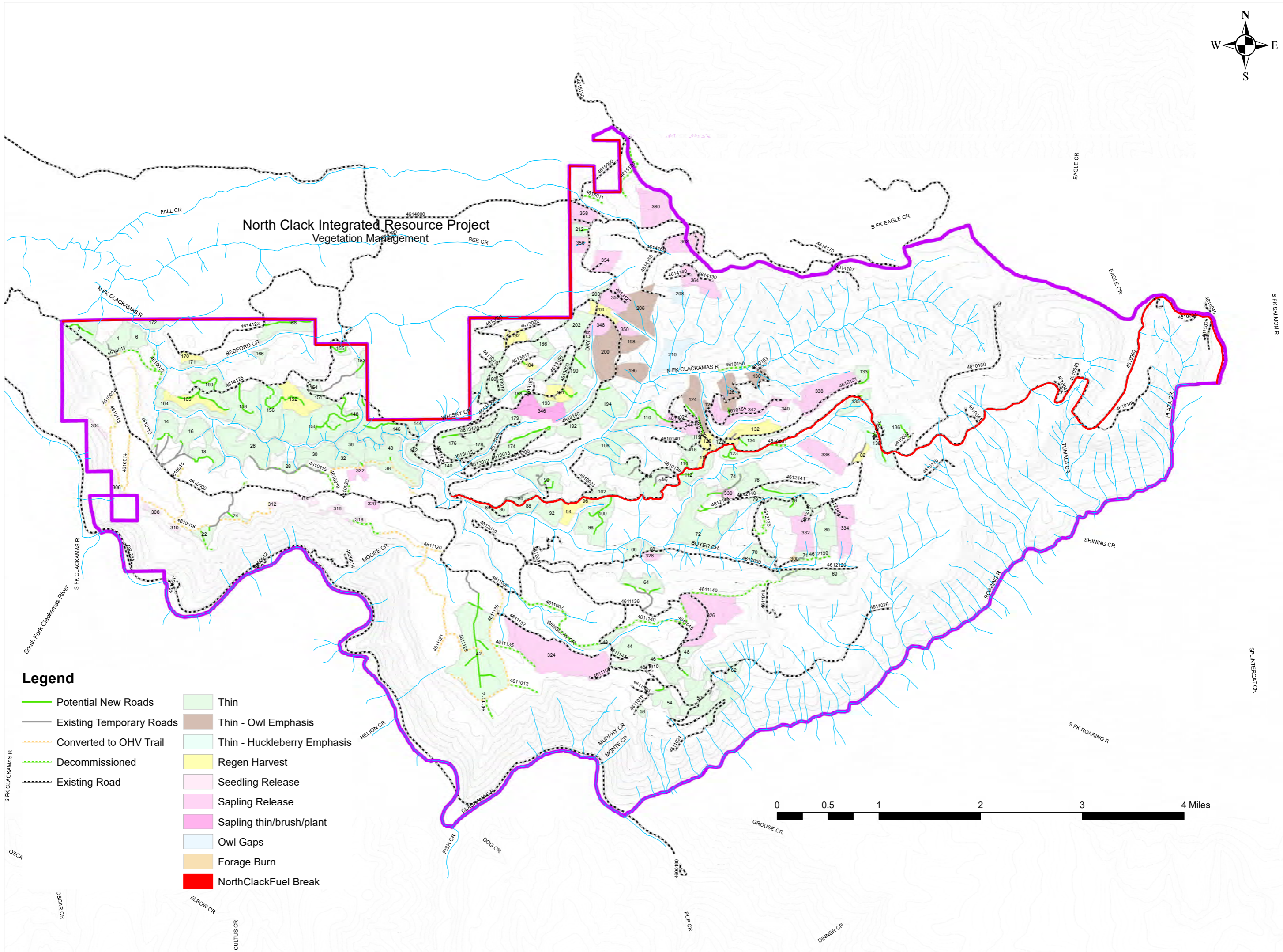
Purpose & Need	Action	Acres	Notes
Improve Forest Health, Growth and Diversity while Providing Forest Products	Variable-density thinning with Skips and Gaps	4,214/4,089	<ul style="list-style-type: none"> <li>• 1,964/1,911 acres in Matrix, with two acre gaps and heavy thins for forage enhancement</li> <li>• 191 acres in LSR</li> <li>• 934/862 acres in Riparian Reserves</li> <li>• 88 acres of thinning with a huckleberry enhancement emphasis</li> <li>• 985 acres of young-stand thinning and brushing</li> <li>• 52 acres of young-stand thinning and brushing and the removal trees in diseased areas followed by planting</li> </ul>

Improve Owl Habitat	Create gaps and thin	262/110	<ul style="list-style-type: none"> <li>• 60/0 acres cut and leave trees in small gaps to improving owl habitat in Matrix (additional red tree vole surveys were not conducted for this category)</li> <li>• 202/110 acres of Matrix thinning with an emphasis of improving owl habitat in the home range</li> </ul>
Provide Forest Products and Create Early-Seral Habitat	<ul style="list-style-type: none"> <li>• Regeneration Harvest with Reserves</li> <li>• Site Preparation and Planting</li> </ul>	371/342	In Matrix, Includes units 76, 82, 94, 96, 107, 120, 131, 132, 133, 152, 165, 170, 182, 184, 191, 195, 201 & 204. All of unit 116 was deleted and portions of units 76, 94, 107 & 132 were deleted.
Enhance Forage	<ul style="list-style-type: none"> <li>• Meadow Burn</li> </ul>	2	An unnamed meadow near Road 4612130
Fire Hazard Reduction	<ul style="list-style-type: none"> <li>• Burning</li> <li>• Fuel Break</li> </ul>	726/697	<ul style="list-style-type: none"> <li>• 150 acres of piling and burning of slash along Road 4610 and property lines</li> <li>• 205 acres of under burning of thinned stands</li> <li>• 371/342 acres of under burning and grapple piling in regeneration harvest units</li> </ul>



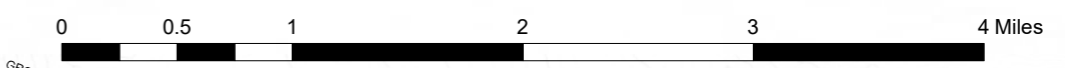


### North Clack Integrated Resource Project Vegetation Management



#### Legend

- Potential New Roads
- Existing Temporary Roads
- Converted to OHV Trail
- Decommissioned
- Existing Road
- Thin
- Thin - Owl Emphasis
- Thin - Huckleberry Emphasis
- Regen Harvest
- Seedling Release
- Sapling Release
- Sapling thin/brush/plant
- Owl Gaps
- Forage Burn
- NorthClackFuel Break



# Stop 3

## CAR GOOD NEIGHBOR AUTHORITY (GNA) UNIT 170



# NOTICE OF TIMBER SALE

(Recovery – Scaled Sale)

SALE NAME/NO.: Car GNA NC-341-2023-GF7421-01

AUCTION DATE/TIME: May 18, 2023, starting at 2:00 p.m.

AUCTION LOCATION: Oregon Department of Forestry  
930 W Washington Street Suite 20  
Stayton, Oregon 97383  
(971)-719-6731

DISTRICT/UNIT OFFICE (MAILING ADDRESS FOR BIDS): 930 W Washington Street Suite 20  
Stayton, Oregon 97383  
(971)-719-6731

HARVEST TYPE: 493-acre Partial Cut/Shelterwood Harvest

SALE LOCATION: T4S R5E Sec 15, 16, 17, 21, 22 and 23  
CLACKAMAS COUNTY, OREGON

DIRECTIONS TO TIMBER SALE AREA: From Estacada proceed east on Hwy 224 approximately 3.0 miles to Fall Creek Road. Turn north onto SE divers in .4 miles. Turn east onto SE Tumala Mountain Rd in .4 miles. Travel on Tumala Mountain road for 6.4 miles. Turn south onto Squaw mountain rd. Timber sale units will be located to the north and south of Bedford Creek.

## APPRAISED VOLUMES AND QUALITY:

SPECIES	AVG DBH	TOTAL MBF	GRADES BY MBF																	
			1P	2P	3P	P	SM	1S	2S	3S	4S	5S	6S	SEL	SC	UT	CR	WRM	PLP	
Douglas-fir	15"	7,290																		
Western hemlock	12"	250																		
Sale Total		7,540																		

MINIMUM BID:	BID SPECIES	Douglas-fir .....	\$379.34 per MBF
		Western hemlock .....	\$141.67 per MBF
	NO-BID SPECIES	Hardwoods .....	\$ 53.00 per MBF
		Pulp (Removal Optional) .....	\$ 1.00 per Ton
		Western red cedar .....	\$767.00 per MBF

In order to compensate PURCHASER for Project Work, ODF will credit PURCHASER's timber account in the amount of \$360,266 after the project work is completed and accepted, as described in Section 2630, "Credit for Project Work."

The Timber Sale Areas contain negligible volumes of other logs to be paid for at the prices in Section 1740.

PERFORMANCE SECURITY: 20% of bid value (unknown) **or** the total value of the project work \$360,266 whichever is greater, not to exceed \$500,000. Actual bond amount will be rounded up to an even \$1,000 unit.

EXPIRATION DATE: March 31, 2026                      BID METHOD: Sealed Bids

BID DEPOSIT: \$243,700.00                      SALE TYPE: Recovery

10% of the net appraised value, not to exceed \$500,000. Bond amount will be rounded down to an even \$100 unit.

INSURANCE: \$2,000,000 Commercial General Liability; \$2,000,000 Automobile Liability; \$2,000,000 Logger's Broad Form.

HARVEST METHOD: 6% helicopter, 31% skyline, and 63% ground-based operations.

PROJECTS:

- No. 1 Road Reconstruction
- No. 2 Road Brushing
- No. 3 Fuel Breaks along private property lines
- No. 4 Grapple piling portions of units 152 and 165
- No. 5 Decommissioning non-project roads and landings

FEES: None

COMPLIANCE STATEMENT: Purchasers are required to comply with all Federal and state laws, including but not limited to the Forest and Rangeland Renewable Resources Planning Act of 1974 (88 Stat. 476 et seq.) as amended by the National Forest Management Act of 1976, (90 Stat. 2949 et seq.; 16 U.S.C. 1601-1614) (NFMA); the Endangered Species Act of 1973 (16 USC 1531, et seq.) (ESA); and the National Environmental Policy Act of 1969, 42 USC 4321-4347 (NEPA). Purchaser should take steps to be certain that Purchaser's operations comply with all Federal and state laws. During the contract term, ODF may modify, suspend or terminate the Contract to prevent environmental degradation or resource damage; to ensure consistency with land and resource management plans, terms and conditions in Incidental Take Statements prepared under the ESA, or documents prepared pursuant to the NEPA; to conduct environmental analysis; or to address issues raised in administrative appeals or in anticipated or pending litigation, protect the interests of the State and U.S. Forest Service, including contract alteration, suspension, or termination. Prospective purchasers are encouraged to contact the North Cascade District at 971-719-6731 for further information or questions relative to threatened or endangered species surveys, future planned survey information, or other threatened or endangered species information.

SPECIAL REMARKS: **NO PERSONAL OR COMPANY CHECKS ACCEPTED FOR THE BID DEPOSIT.**

**SEASONAL RESTRICTIONS APPLY - SEE SECTION 2455.**

**Pulp removal is optional.**

**Contact North Cascade District for georeferenced digital maps of the Timber Sale Area.**

The information shown on the Exhibit A map(s) are approximate locations. Exact locations of features represented by map symbols shall be determined on site and shall depend upon the conditions that exist on site. Activities shall be conducted based upon features determined on site rather than features shown on maps.

**See inside front cover of Timber Sale Schedule handbook for disclaimer regarding all governmental regulatory actions. The handbook can be accessed online at:**  
<http://www.oregon.gov/ODF/Working/pages/TimberSales.aspx>

**SALE NAME: Car GNA**  
**COUNTY: Clackamas**  
**CONTRACT NO.: NC-341-2023-GF7421-01**

# State Timber Sales Results



## SALE NAME: Car GNA

**DISTRICT:** N. Cascade

**BID OPENING DATE:** 5/18/2023

**SALE NUMBER:** 341-NC-341-2023-GF7421-01

**TYPE OF SALE:** Combo, Recovery

**COUNTY:** CLACKAMAS

### APPRAISED BID SPECIES:

Volume (MBF)	Species	Price (\$) per MBF
7290	Douglas-fir	\$379.34
250	Western hemlock	\$141.67

### APPRAISED NON-BID SPECIES:

Volume (MBF)	Species	Price (\$) per MBF	Total Price (\$)
	Hardwoods	\$53.00	
	Western red cedar	\$767.00	

Apparent Successful High Bidder	Price (\$) Per MBF Bid Species	Other Bid Species Price (\$) (if any) per MBF
Interfor U.S. Timber Inc.	\$508.22 Douglas-fir	
	\$220.28 Western hemlock	

### BID DEPOSIT FORM:

Sealed

OTHER QUALIFIED BIDDERS	Bid Species	Price (\$) Per MBF (if any)	Other Bid Species Price (\$) per MBF
Murphy	Douglas-fir	\$466.29	
	Western hemlock	\$141.67	
Freres Lumber Co. Inc	Douglas-fir	\$463.18	
	Western hemlock	\$141.67	
Hampton Tree Farms LLC	Douglas-fir	\$383.57	
	Western hemlock	\$141.67	

[Return to the State Forests Timber Sale Results page.](#)



# INTERFOR

**50+**  
YEARS  
SERVING  
GLOBAL  
MARKETS



**5200**  
EMPLOYEES  
CANADA: 2,600  
UNITED STATES +  
INTERNATIONAL:  
2,600



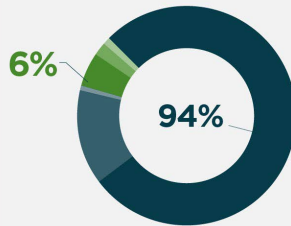
**SFI,  
PEFC**  
CERTIFIED



**29**  
MILLS



**Broadest**  
RANGE OF PRODUCTS



**Specialty**

- I-JOIST 5%
- WRC 1%
- METRIC/SQUARES <1%

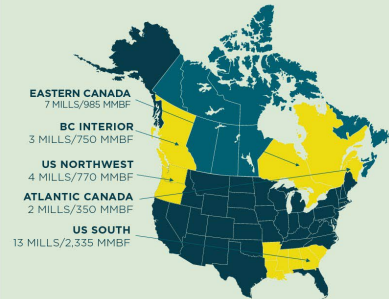
**Commodity**

- DIMENSION 70%
- STUDS 23%
- MSR 1%

**500+**  
PERCENT  
GROWTH



**4**  
DISTINCT  
MANUFACTURING  
REGIONS



ONE SINGLE SOURCE OF SUPPLY.



## US PNW REGION

- 3 Mills (Recently Closed 4<sup>th</sup> Mill at Philomath, OR Feb 2024)
- Molalla, OR
- Longview, WA
- Port Angeles, WA

## MOLALLA OPERATION

Small Diameter Stud Mill, produces 2x4 and 2x6 8',9' and 10' Lumber  
 Production Capacity of 180 MMBF Lumber Production/Year, 2 Shift 80 Hrs/Week  
 Consume 70 MMBF Logs/Year 5" Top to 22.0" Max Butt Diameter  
 75% Douglas-fir, 25% Hemlock/True Fir Log Mix.  
 SFI Certified Chain of Custody and Fiber Sourcing  
 125 Full Time Employees

Interfor U.S. Timber Inc.

243701 Highway 101 West  
Port Angeles, WA 98363

tel: (360) 457-6266  
fax: (360) 457-1486

Interfor.com



# ADDRESSING OREGON'S HOUSING CRISIS WITH MASS TIMBER

an Initiative of the Oregon Mass Timber Coalition



The Oregon Mass Timber Coalition is investing approximately \$41.4 million from the US Economic Development Administration to become a national leader in using mass timber to accelerate affordable housing production, provide good jobs, and restore forest health.

Oregon faces formidable threats from climate change and economic inequity. A worsening housing shortage hampers efforts to retain workers and employers. EDA funding supports a series of targeted investments along the full value chain, starting with working with forest-dependent rural communities to grow access to wood fiber.

Research and development projects by the University of Oregon and Oregon State University will lead the design and prototyping of new construction materials and products. Public testing facilities will certify that developed products meet fire and acoustic codes, paving the way for production and sale.

Infrastructure improvements at the Port of Portland will create a site suitable for private investment in a regional mass timber manufacturing facility to build housing at scale. The Oregon Dept. of Land Conservation and Development will ensure planning and development codes are primed to accommodate modular mass timber homes in rural and wildlife-impacted communities. EDA funds will also support workforce development investments with industry, workforce boards, and labor organizations to provide training in industries related to these new wood-based products.



#### CONTACT INFORMATION:

Project Lead: Marcus Kauffman  
marcus.kauffman@odf.oregon.gov  
541-580-7480

# ADDRESSING OREGON'S HOUSING CRISIS WITH MASS TIMBER

## Project details

The Oregon Mass Timber Coalition received funding for a suite of nine related investments to advance the mass timber economy.

### Oregon Acoustic Research Lab (UO)

- \$14.6M to build a state of the art acoustic testing facility in Portland, OR.
- Lack of acoustic testing is a known barrier to affordable mass timber housing.

### Oregon Fire Testing Facility (OSU)

- \$2.5M to build a mass timber fire testing facility in Corvallis, OR.
- Fire testing data will give practitioners confidence using mass timber.

### Mass Timber Panel Prototyping (UO)

- \$2M to build prototypes of mass plywood panels for affordable housing.
- Prototypes will be "proof of concept" for builders and developers.

### Prototyping & Testing Mass Timber Housing (OSU)

- \$1.2M to test and evaluate mass timber housing systems. Test data will be open source for the benefit of industry at large.

### Advancing a Forest Restoration Supply Chain (ODF)

- \$3.2M to thin federal forests and provide small-diameter fiber to mass timber manufacturers.
- Develop robust track and trace program.

### Mass Timber Regional Training Cluster (Port of Portland)

- \$3.1M to support building a skilled and diverse workforce in forestry, construction and advance manufacturing.
- Partner with Worksystems Inc. and Portland Community College on delivery.

### Smart Forestry: From Forest Restoration to Mass Timber (OSU)

- \$4.4M to advance technology and science-based solutions to source wood from forest restoration activities.
- Test new mass timber designs and manufacturing technologies.

### Mass Timber Campus Infrastructure (Port of Portland)

- \$10M to develop Port of Portland's Terminal 2 into a regional mass timber manufacturing facility.
- Recruit a mass timber housing developer.

### Mass Timber Development Code Update (DLCD)

- \$.5M to update development codes to accommodate modular mass timber housing.
- Provide technical assistance to 30 cities.



#### CONTACT INFORMATION:

Project Lead: Marcus Kauffman  
marcus.kauffman@odf.oregon.gov  
541-580-7480

# Advancing a Forest Restoration Supply Chain



AWARD AMOUNT:

**\$3,240,378**

NON-FEDERAL MATCH

**\$1,340,550**

## Why a forest restoration supply chain?

Oregon is facing two distinct challenges. Wildfires have become larger and more destructive and wildfire season has become longer and more costly. Similarly, Oregon's wood products sector faces decreasing supplies of available wood fiber.

This effort will demonstrate that forest resilience treatments on federal forests can make forests and communities safer from wildfire while simultaneously providing small-diameter fiber to serve the growing mass timber industry.

## Planned actions

- 1 Advance forest health and community wildfire resilience on three to four 70-acre project areas within the Willamette National Forest.
- 2 Partner with the Willamette National Forest to prepare supporting documentation necessary for NEPA determinations (including categorical exclusions and determinations under other environmental laws such as ESA and NHPA) by the applicable federal agencies.
- 3 Collaborate with the Willamette National Forest to plan, layout, and administer three to four Good Neighbor Authority (GNA) timber sales to provide additional wood fiber to the regional mass timber supply chain.
- 4 Provide restoration fiber to the regional supply on three to six approximately 70-acre areas.
- 5 Develop robust track and trace program to bring additional transparency and accountability to the restoration mass timber supply chain in partnership with Sustainable Northwest.
- 6 Develop multi-media communication and outreach efforts to raise public awareness of socio-economic and ecological benefits of building affordable mass timber housing from restoration fiber.



### CONTACT INFORMATION:

Project Lead: Marcus Kauffman  
marcus.kauffman@odf.oregon.gov  
541-580-7480