

Create your own Superhero!

Just like Ash Man, we can be tree stewards and come up with ways to slow down the emerald ash borer. Can you create your own superhero? What qualities will your superhero have to help slow down the Emerald ash borer?

My superhero's name is...

And their powers are...


draw here

BE A TREE STEWARD!

A tree steward cares for trees and helps others to do the same! Tree stewards talk to their friends about why trees are good, which pests or diseases might hurt the trees, and how they can also be a tree steward. Trees cannot speak, so it is our job to speak for them!



List 3 people you could talk to about emerald ash borer:

1.

2.

3.

Now... be a tree steward and go tell them!

Emerald Ash Borer



Tree Inspector

Trees are an important part of Oregon's ecosystems. If we learn how to identify and inspect trees, we can help protect and keep them healthy. For example, ash trees are being threatened by a beetle called emerald ash borer. With your help, we can learn to see the signs and symptoms so that trees can live long, happy lives. Let's practice!

Step 1: Sketch!



Find a nearby tree. Draw everything that you see!

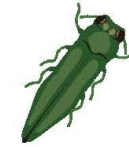
Don't forget to add details like leaf shape and bark texture. Are the leaves round or pointy? Is the bark rough or smooth?

Step 2: Inspect!

Take a closer look at your tree. Put a check mark next to anything you see!

Bugs

Many types of bugs live on or around trees. Some of them are helpful for the trees, and others are harmful.



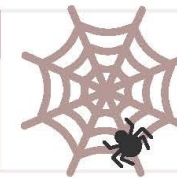
Cones and seeds

Trees make cones and seeds. These drop on the ground and grow into new trees. They are also food for some animals.



Spiderwebs

Spiderwebs are homes that spiders make. Each spider creates a unique web to catch its food.



Fungi

Fungi are living organisms that are neither plant nor animal. They help break down dead plant and animal material and turn it into soil.



Lichen

Lichen is an organism that lives on trees. Lichen is food for animals and helps keep the environment healthy!



Animals

Many animals use all kinds of trees as homes, protection, and a source of food. Keep an eye out for birds and squirrels.



Challenge: Identify!

There are many different types, or species, of trees. Which species did you see?

If you aren't sure, what could you do to figure it out? _____

Bring the Forest To Life!

Animals help to bring a riparian ecosystem to life! Draw some of your favorite animals and plants in the scene below. Examples of things you can draw are...

Beavers

Birds

Squirrels

Leaves

Fish

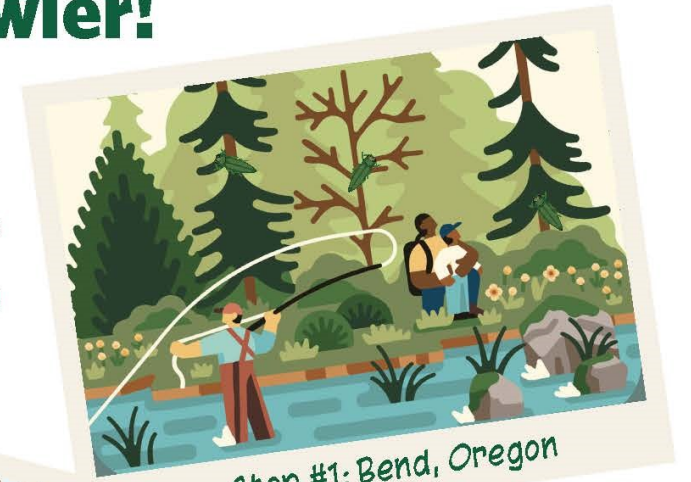
Flowers



Catch That Crawler!

Emerald ash borer beetles are trying to travel all over Oregon to kill our ash trees! They like to hitchhike in firewood.

Find all NINE of the green beetles before it's too late! Circle the beetles in each picture. Then, answer the question below. Good luck!



Stop #1: Bend, Oregon



Stop #2: Salem, Oregon

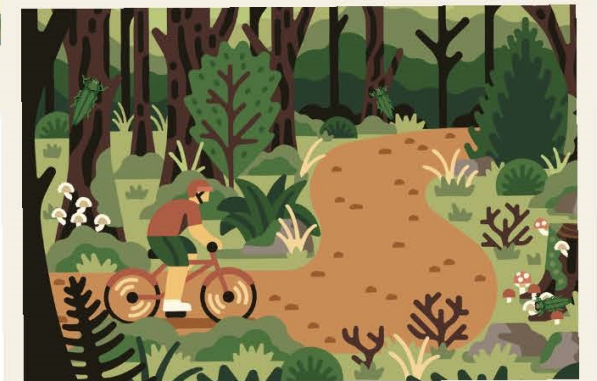


Remember!

Only buy firewood near where you are camping!

Think about it...

What do YOU think happens when we accidentally bring emerald ash borer to new places? Write your answer below.



Stop #3: Medford, Oregon

Log Labyrinth

Did you know?

Emerald ash borer beetles find nearby ash trees and lay eggs on their bark. When the eggs grow into larvae, the larvae eat the part of the tree that carries water from the roots to the rest of the tree, making S-shaped tunnels under the bark. Without water, the tree will die!

Complete the maze to see how the larvae eat through the trees.



STOP HITCHHIKING BEETLES!

TRUE FALSE

- TRUE FALSE When I go camping, I should buy firewood that was cut from local trees.
- TRUE FALSE I should always buy firewood that has been heat treated because it will kill harmful bugs that are trying to hitchhike.
- TRUE FALSE If I don't know what species of tree my firewood came from, it is better to not use it in case it is infested with harmful bugs.
- TRUE FALSE I can always tell if firewood has been infested by a pest just by looking at it!

Answers: True, True, True, False

Save Our Streams!

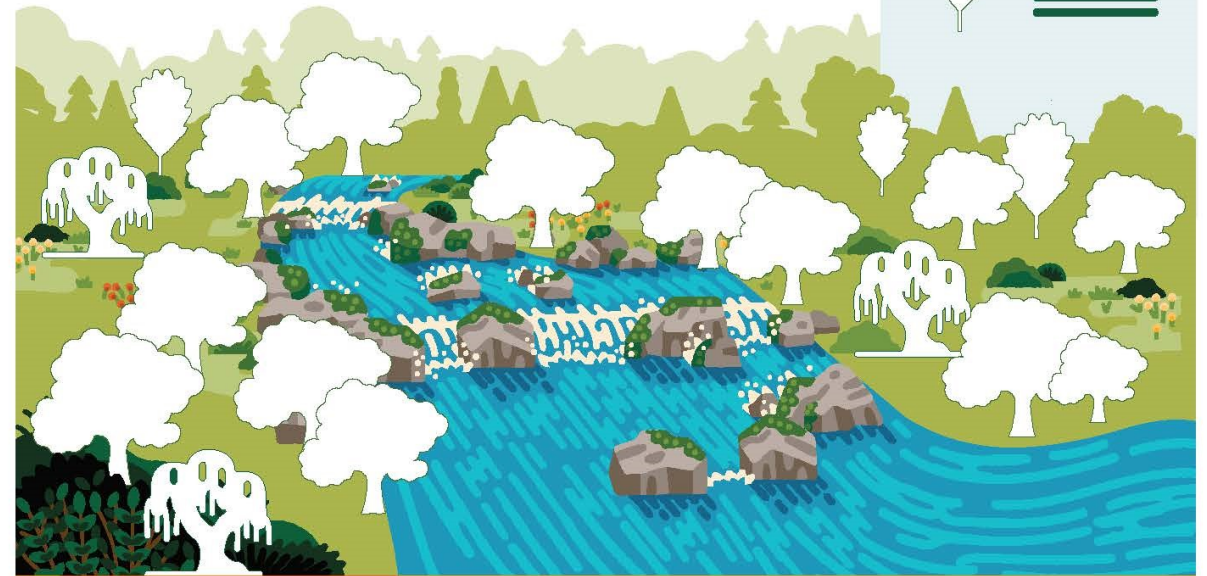
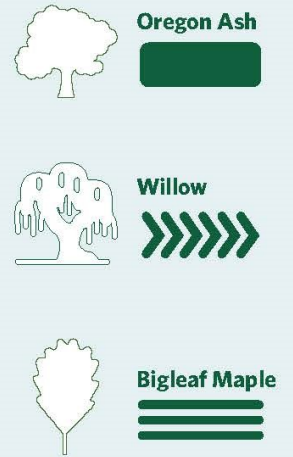
Riparian:
Areas that exist along a river or a stream.

Streams are extremely important pieces of our *riparian* ecosystem in Oregon. Trees do many jobs to help streams in riparian ecosystems, including shading the water, creating homes for wildlife, and making it beautiful for us to enjoy. If pests like the emerald ash borer kill native ash trees, we lose many of those benefits.

Instructions:

The key to the right shows common trees you might see next to a stream in Oregon. Shade in the trees below based on the patterns listed in the key to see what our streams will look like if we lose our native ash trees to pests.

TREE KEY



HOW DO YOU BENEFIT FROM TREES?

Below is a list of benefits that trees provide. Circle which benefits you've experienced from trees in Oregon State Parks or at home!

- FIREWOOD
- BUILDING MATERIALS
- BIRD WATCHING
- SHADE
- PLAY AREA
- FRESH AIR
- BEAUTY