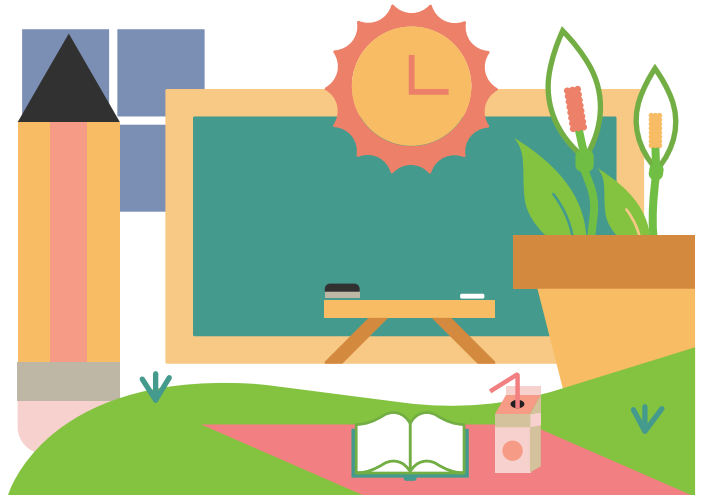


System Navigation for Students

Partnering with state agencies to increase access to social system supports for students and their families.

Executive Summary

Care coordination can support any social needs that are preventing a student from being able to fully participate in school, like housing or food assistance; or access to culturally responsive mental health providers. The HiE Unit is creating linkages for ODE and school districts into existing state and local systems that are built to provide system navigation.



The Problem

Schools have what many state agencies providing social supports wish they had – nearly universal access to an at-risk population. School districts aren't connected to local systems that work to serve the students in their buildings.

The Solution

By creating collaboration with local systems of care, ODHS, and CCOs, the HiE unit is helping connect state agencies directly to the populations they're trying to serve; and students and families are able to get the supports they need so that they can focus on their education.

Successes and Prospects



- The Community Care Development Program is currently developing a Blueprint for dissemination that will guide districts in constructing their own Community Care Systems.
- The HiE Unit represents ODE at the System of Care (SOC) Advisory Committee ensuring that education is a key partner in developing 2025 state and local SOC strategic plans.
- Full Service Community Schools (FSCS) are demonstrated social need support models. The HiE Unit is working to map to this framework and support school districts in implementing FSCS.

Equity is the bedrock of our initiatives. By creating system linkages between school districts and their local wraparound supports, as well as piloting high-quality, culturally responsive health and mental health support programs (CCDP), the HiE Unit is ensuring that all students can overcome barriers keeping them from school.