



DTC Webinar

9/11/24

Welcome! Thank you for joining us. We will begin shortly.

Assessment Team Contacts

[Dan Farley, Ph.D.](#), Assistant Superintendent

[Andrea Lockard, Ed.D.](#), Director of Assessment

[Tony Bertrand,](#)

English Language Arts and Social Sciences

[Andy Byerley,](#) Math

[Sody Fearn,](#) K-2 Balanced Assessment

[Audrey Lingley, Ed.D.](#), SEED Survey

[Carla Martinez,](#) Administrative Support

[Crys Plattner,](#) Administrative Support

[Mason Rivers,](#) Special Education

[Mariela Salas Bao, Ed.D.](#), Science

[Ben Wolcott,](#)

English Language Proficiency



Regional ESD Partner Contacts

Assessment Support

[Amy Rockwell](#)- Regions 1 and 2
1-800-970-8372 ext. 1 or 503-540-4470

[Shannon Lyon](#)- Region 3
1-800-706-4447 ext. 3220 or 541-966-3220

Accountability and Collections Support

[Karen Brown Smith](#)- All regions
1-800-706-4447 ext. 3124 or 541-966-3124

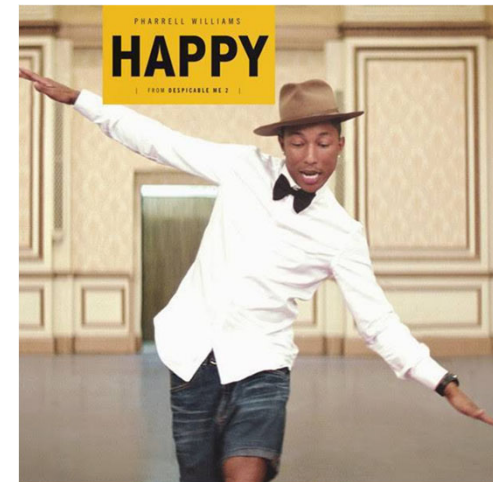
[Peter Campbell](#)- All regions
1-800-706-4447 ext. 3203 or 541-966-3203

[Joe Doherty](#)- All regions (ADM, SSID, 9OT)
1-800-706-4447 ext. 3140 or 541-966-3140

Get to Know You

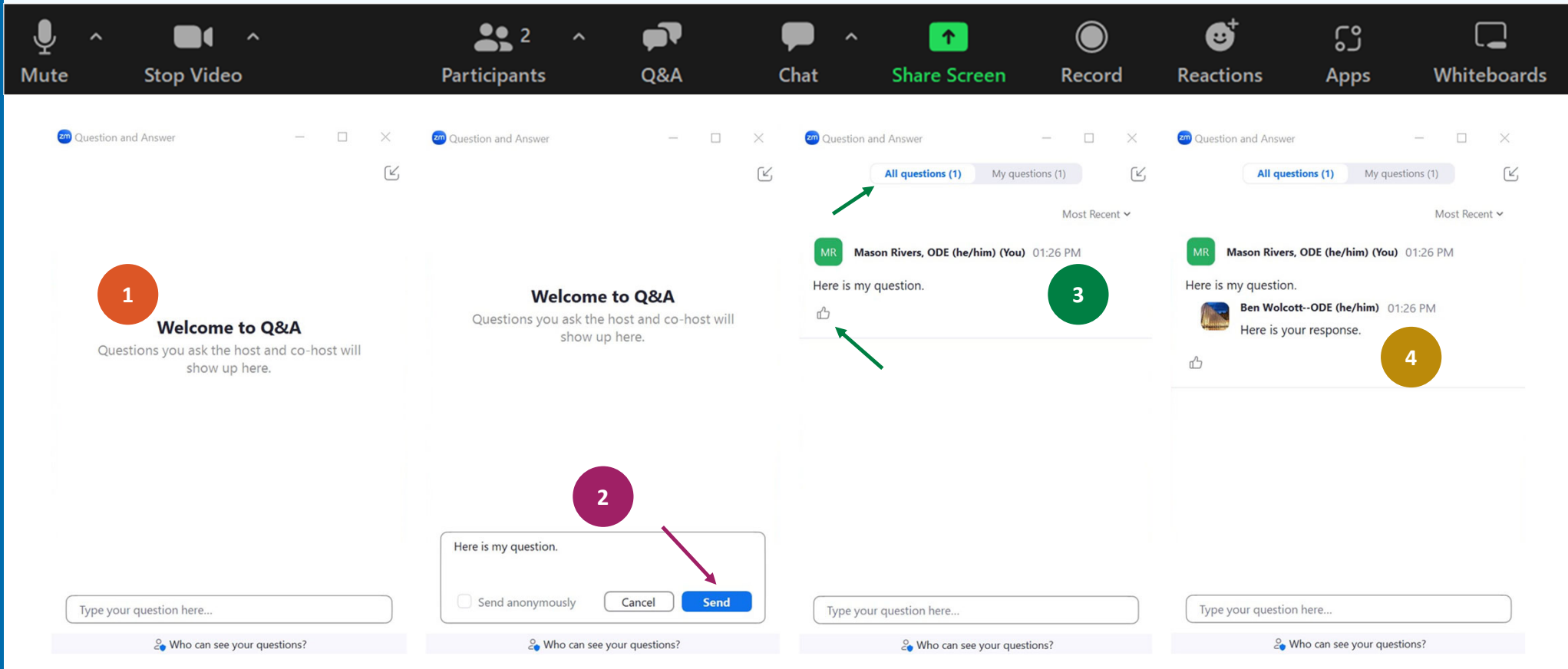
Name a song that best represents something that brought you joy during the first week students returned to school

1 minute to think
Chat waterfall



Source:<https://theneptunes.org/2014/01/pharrell-gets-happy-with-debut-on-hot-rbhip-hop-songs-on-29/>

Zoom Q&A Feature



The image illustrates the Zoom Q&A feature workflow through four sequential screenshots, each with a numbered callout (1-4) and a corresponding icon in the Zoom toolbar above. The toolbar includes Mute, Stop Video, Participants (2), Q&A, Chat, Share Screen, Record, Reactions, Apps, and Whiteboards.

- Step 1:** A "Welcome to Q&A" screen with the text "Questions you ask the host and co-host will show up here." and a text input field labeled "Type your question here...".
- Step 2:** A "Send" button is highlighted in the input field area. Below the input field is a "Send anonymously" checkbox and a "Who can see your questions?" dropdown menu.
- Step 3:** A question is submitted: "Here is my question." by "Mason Rivers, ODE (he/him) (You)" at 01:26 PM. A thumbs-up icon is visible below the question.
- Step 4:** A response is received: "Here is your response." by "Ben Wolcott--ODE (he/him)" at 01:26 PM.

Getting Started

- Today's webinar will be recorded, so please monitor your use of audio and camera.
- Please use the Q&A, not the Chat, for questions.



Photo by [Craig Pattenau](#) on [Unsplash](#)

Welcome New DTCs!

- Check out the [DTC Roadmap](#) (now updated for 2024-25)!
- Weekly Assessment & Accountability (A&A) [Update](#) Email and [Archive](#) site for historical updates
- Bookmark the [Assessment Administration](#), [Training Materials](#) and [Communication](#) pages
- Get to know your Regional [ESD Partners](#)
- Stay tuned for details on a New DTC Orientation!



Coming Soon!

Calendar of 2024-25 Webinars

2024-25 Annual DTC Trainings

→ Register for ONE of the following:

- Tuesday, [November 5](#), 3:00 - 4:30 pm PT
- Weds., [November 6](#), 9:00 - 10:30 am PT
- Thursday, [November 7](#), 3:45 - 5:15 pm PT

*Complete the DTC Fact Finder by
Tuesday, November 5.*

Monthly DTC Webinars

Generally, the second Wednesday of each month from 10:00 - 11:00 am PT. [Register for each.](#)

- Sept. 11, 2024
- Oct. 9, 2024
- Nov. 13, 2024
- Dec. 11, 2024
- Jan. 8, 2025
- Feb. 12, 2025
- Mar. 12, 2025
- Apr. 9, 2025
- May 14, 2025
- June 11, 2025

Quick Reminders

<i>Available Now</i>	<ul style="list-style-type: none">● <i>Preliminary TAM and OAM</i>● DTC Roadmap● SEED Survey Administration Manual (SAM)● Interim Assessment Guide and Tools for Teachers● Local Performance Assessment Manual
<i>September 24, 2024</i>	<ul style="list-style-type: none">● OSAS Interim Assessments available
<i>October 1, 2024</i>	<ul style="list-style-type: none">● Test Administration Manual● Oregon Accessibility Manual● DTC Training Modules*● DTC Fact Finder
<i>October 29, 2024</i>	<ul style="list-style-type: none">● Sample Tests Refresh

DTCs are a Primary Channel of Communication

DTCs are responsible for communicating assessment information to relevant district personnel.

This includes but is not limited to topics such as:

- ORExt
- Alt ELPA
- SEED Survey
- Early Learning Transition Check-in

Update

- OSAS Math Test Blueprints Updated - published no later than 9/20
- [Early Learning Transition Check-In](#) Informational Webinar 10/30
- Only those SSIDs that have been updated after 8/19 will be available in TIDE
- TIDE will not allow ELPA domain exemptions + Honoring Student Proficiency to eliminate a student's last testable domain

More Updates

- [1% ORExt Participation Reporting Requirements](#)
- [Oregon Extended Assessment Training Redesign](#)
- Updated [Alternate Assessment Decision Making Guidance](#)

- Minor nomenclature updates (no URL changes):
 - Test Administration page → Assessment Administration page
 - Test Resources page → Assessment Resources page
 - Oregon Statewide Summative Test Schedule → Oregon Assessment Administration Schedule

Assessment Requirements for 2024-25

Assessment	Required Grades	Basis of Requirement
Mathematics and English Language Arts	3 – 8 and 11	ESSA, ORS 329.485 OAR 581-022-2100
Science	5, 8, and 11	ESSA, ORS 329.485, OAR 581-022-2100
Social Sciences Performance Tasks (optional)	5, 8 and high school	ORS 329.485, OAR 581-022-2100
English Language Proficiency (ELPA21), including Alt ELPA	Kindergarten – 12	ESSA, OAR 581-022-0610
Community Informed Information Gathering Process at Kindergarten*	Kindergarten	OAR 581-022-2130 (pilot)
National Assessment of Education Progress (NAEP)	4 and 8	ESRA, Title III, sec. 303, ESSA
Nationally-Normed College Entrance Practice Test (PreACT)	Must be offered at Grade 10	ORS 329.488
SEED Survey including Alt SEED	Must be offered in Grades 3-11	HB 2656
Local Performance Assessments	3 – 8 and at least once in high school	OAR 581-022-2115

2024-25 Assessment Schedule

Oregon Department of Education

Statewide Summative Content Assessments

The test window for the statewide summative content assessments applies all versions of the tests: online General (in-person and remote) and Alternate (Oregon Extended; in-person only).

Name	Grades	Window
English Language Arts and Mathematics ^{A B}	3-8	4/1 – 6/13
Science ^{A B}	5, 8	3/4 – 6/13
English Language Arts, Mathematics, and Science ^{A B}	11 ^C	2/4 – 6/13

Statewide Summative English Language Proficiency Assessment

Name	Grades	Window
ELPA Summative and Alt ELPA	K, 1, 2-3, 4-5, 6-8, 9-12	1/14 – 4/11
Remote ELPA Summative	K, 1, 2-3, 4-5, 6-8, 9-12	3/4 – 4/11

Community Informed Information Gathering Process at Kindergarten

Name	Grades	Window
ELTC Family Conversation (volunteer classrooms only—not required statewide)	Kindergarten	Locally determined (contact ODE for assistance)

Student Educational Equity Development Surveys (SEED and Alt-SEED Surveys)

Name	Grades	Window
SEED (remote or in-person) and Alt SEED (in-person only)	3-11	2/4 – 6/13

National Assessment of Educational Progress

Name	Grades	Window
NAEP (Selected schools only)	Grades 4, 8, and 12	1/27 – 3/7 (2025)
	9-year-olds across grades	1/6 – 3/14 (2025)
	13-year-olds across grades	10/7–12/13 (2024)
	17-year-olds across grades	3/17 – 5/23 (2025)

Nationally Normed College Entrance Practice Test

Name	Grades	Window
PreACT	10	10/1/24 – 4/11/25

IntermediaryEd PreACT Delay Update

What's new?

- IRS Letter is in
- ODE Procurement fast-tracked processing and completing the required contract amendment
- Oregon Department of Justice (DOJ) now has it for the required sufficiency review.

How long will the DOJ review take?

- could take up to 30 days
- ODE has, again, requested that this amendment be prioritized.

IntermediaryEd PreACT Delay Update (part 1)

What does this mean for our timeline?

Once DOJ approves and amendment is executed, IntermediaryEd will finalize their communication and configuration processes. New dates will be identified and shared for the following:

- Informational email containing links for training, ordering, etc.
- Order Window Open Date
- Test Window Open Date

What happens if our district was scheduled to test before the new window?

Once the amendment is approved, IntermediaryEd will work with each district scheduled to test before the new test window opening date to identify individual solutions for the testing date to be maintained.

IntermediaryEd PreACT Delay Update (part 2)

If the review has not come back by the date my district has identified as the deadline, can we order directly from ACT?

- If districts choose to order the paper/pencil PreACT test directly from IntermediaryEd (formerly ACT, Inc.) and there is any issue that causes the Contract to not be amended to change the organization the ODE is Contracting with, they may not be able to be reimbursed.
- If DOJ determines that the change is not in alignment with the requirements of the Contract, Statute, or both (especially if the vendor is determined to not be in compliance with the statute (i.e. they are not non-profit)) the district cannot, and will not, be reimbursed.
- While districts would be in compliance with providing an opportunity for students, they would not be able to be reimbursed due to not being in compliance with the state contract piece of the statute.

Parent Opt-Out / Request for Exemption Fields in TIDE, part 1

Summary

- New in 2024-25
- Required fields in TIDE

Rationale

- Track opt-out / parent request for exemption rates
- Prevent improprieties

The screenshot shows a form titled "Test Access" with the following fields:

- Parent Opt-Out: None selected (dropdown menu)
- Parent Request for Exemption: None selected (dropdown menu)
- Remote Tester: Yes No
- Parental Consent for AV Monitoring: - Select - (dropdown menu)

Parent Opt-Out / Request for Exemption Fields in TIDE, part 2

- Required fields
 - STCs and TAs: can see but not edit
 - DTC and DLU: can manually update
 - ESD Partners: can batch upload
- Cannot save record unless matching test has been blocked
 - Test can be blocked in advance and field set later

TAM Section 5.3, Student Participation in State Testing

Test Status Change Deadlines, Part 1

- **ELPA** (Summative and Alt ELPA): 6/9/25
- **ELA, Math, Science** (general and ORExt): 6/20/25

After the test status change deadline, tests can no longer be invalidated in TIDE/CRS (or the OR.K12test.com system for ORExt). Invalidation requests will still be honored in ODE data systems.

TAM Section 3.5, Reporting Test Improprieties and Irregularities

Test Status Change Deadlines, Part 2

- TIDE Rollover: mid-July (likely ~7/18/25)
 - After this deadline: a new reporting year has begun in CRS. You will need to change the reporting time period to see score reports from previous years.
- ODE Data Validation: closes late August (likely 8/22/25)
 - After this deadline: tests may no longer be invalidated in ODE data systems.

Assessment and Accountability Checklist (under Resources heading on [Key Dates for Accountability and Reporting page](#))

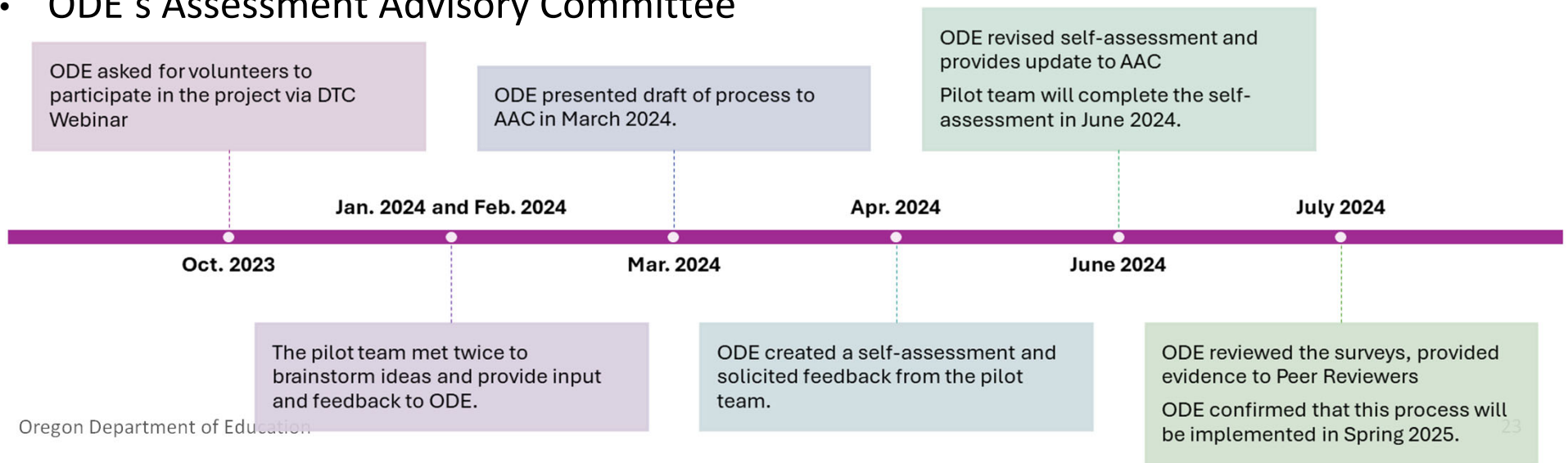
New Test Administration Monitoring

- Federal law requires state ESSA plans to undergo a Peer Review process (ESSA §1111).
 - ODE received the following feedback in response to its 2021 Peer Review submission:
 - Additional evidence needed: **Evidence that the State adequately monitors the test administration of its State assessments to ensure that standardized test administration procedures are implemented with fidelity across districts and schools.**

Test Administration Monitoring Process Timeline

The Test Administration Monitoring process was developed in collaboration with:

- **Pilot Team:** Brian DeWolf (Gaston), Kristie Hauss (Beaverton), Justin Kameron (Hood River), Jen Mason (Medford), Susan Peck (Southern Oregon ESD), and Margie Suydam (PPS)
- ODE's Assessment Advisory Committee



Test Administration Monitoring Process

When is my district being monitored?

- Test administration monitoring will follow a **repeating five-year rotation** based on regional Education Service District (ESD) location:
 - **2024-25: Lane ESD, Linn-Benton-Lincoln ESD, Willamette ESD**
 - 2025-26: Harney ESD, High Desert ESD, Jefferson ESD, Lake County ESD, Malheur ESD
 - 2026-27: Grant County ESD, Intermountain ESD, North Central ESD, Region 18 ESD
 - 2027-28: Clackamas ESD, Columbia Gorge ESD, Multnomah ESD, NW Regional ESD
 - 2028-29: Douglas ESD, South Coast ESD, Southern Oregon ESD

What do I have to do?

- Districts will be required to complete a self-assessment **once** every five years.
 - DTC or their identified district staff complete self assessment
 - Online form will be available in April each year
 - Deadline to submit self-assessment is June 30 each year
 - Estimated time commitment is 1-2 hours

Where can I find more information?

- For more information regarding test administration monitoring please visit the [Assessment Administration](#) webpage, under the ESSA Test Administration Monitoring.
- Spring 2025: ODE Assessment Team will hold general office hours for additional support during this process.

ESSA Test Administration Monitoring ×

- [ESSA Test Administration Monitoring - Resources Guide](#)
- [ESSA Test Administration Monitoring Rotation of Districts](#)
- [ESSA Test Administration Monitoring Self-Assessment](#)

Questions?

Concerns?

Recommendations

.



Next Steps and Adjournment

- A Q/A document will be posted to the [Assessment Administration Resources](#) page.
- Please contact the [ODE Assessment Team](#) if you have any additional questions or concerns.

Thank you!