



DTC Webinar

November 13, 2024

Welcome! Thank you for joining us. We will begin shortly.

Welcome!

It's nice to see you again!

In the chat, please enter:

- Role
- District
- Which do you prefer? Apple or Android?
- Why?

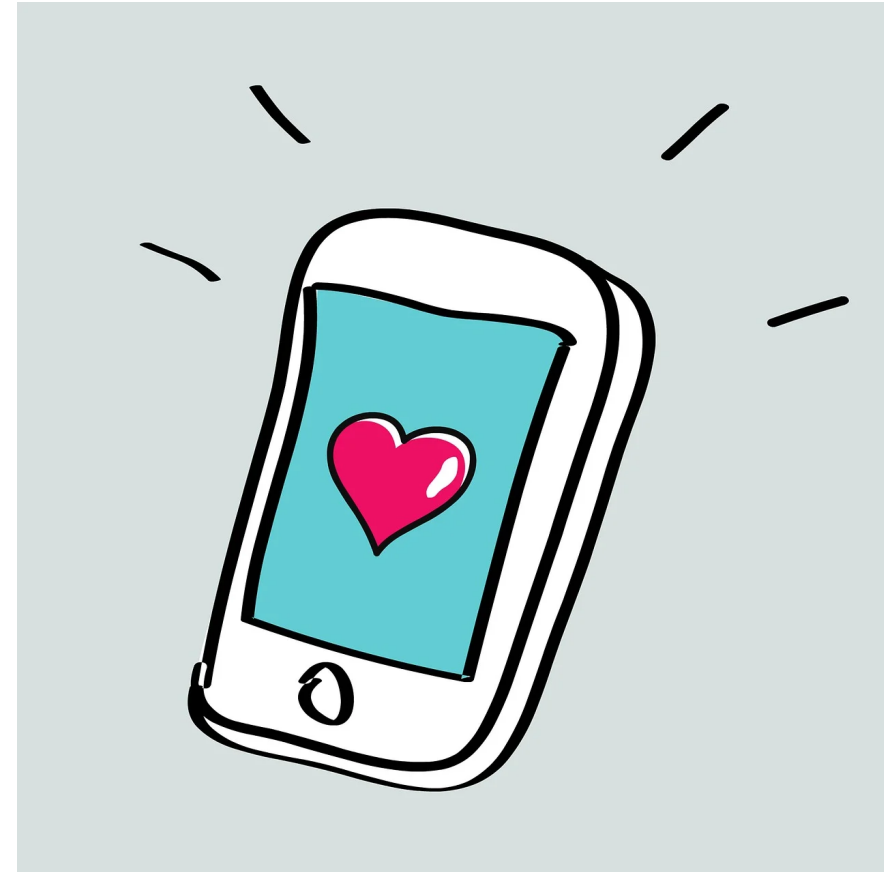


Image source: [Pixabay](https://pixabay.com/)

Assessment Team Contacts

[Dan Farley, Ph.D](#), Assistant Superintendent

[Andrea Lockard, Ed.D](#), Director of Assessment

[Tony Bertrand](#),

English Language Arts and Social Sciences

[Andy Byerley](#), Math

[Sody Fearn](#), K-2 Balanced Assessment

[Audrey Lingley, Ed.D](#), SEED Survey

[Carla Martinez](#), Administrative Support

[Crys Plattner](#), Administrative Support

[Mason Rivers](#), Special Education

[Mariela Salas Bao, Ed.D](#), Science

[Ben Wolcott](#),

English Language Proficiency



Regional ESD Partner Contacts

Assessment Support

[Amy Rockwell](#)- Regions 1 and 2
1-800-970-8372 ext. 1 or 503-540-4470

[Shannon Lyon](#)- Region 3
1-800-706-4447 ext. 3220 or 541-966-3220

Accountability and Collections Support

[Karen Brown Smith](#)- All regions
1-800-706-4447 ext. 3124 or 541-966-3124

[Peter Campbell](#)- All regions
1-800-706-4447 ext. 3203 or 541-966-3203

[Joe Doherty](#)- All regions (ADM, SSID, 90T)
1-800-706-4447 ext. 3140 or 541-966-3140

Getting Started

- Today's webinar will be recorded, so please monitor your use of audio and camera.
- Please use the Q&A, not the Chat, for questions.



Photo by [Craig Pattenau](#) on [Unsplash](#)

Updates

- Session 2 in the New DTC Orientation series is Monday, Nov. 18, at 1:00 PM PT. If this isn't on your calendar and you'd like to attend, please email ODE.AssessmentTeam@ode.oregon.gov with a request to join.
- PreACT Welcome Email from IntermediaryEd should be coming out today (11/13). A DTC Listserv message will also be sent confirming the distribution of the Welcome Email.
- ORExt training website now open OR.K12test.com

More Updates

- The OSAS Annual Notice and 30-Day Notice/Opt-out Forms have been translated into Ukrainian for 2024-25. These are found within the “Forms” menu on the [Assessment Administration](#) webpage.
- Erroneous 30-day annual notice dates on [page 48 of the TAM](#) have been corrected to the following:
 - HS: **January 5, 2025**
 - Grades 3-8: **March 2, 2025**
- [TIDE Webinar](#) Nov 14, 3:00-4:00 pm PT

DTC Annual Training Follow-Up

- A version of the slides without Fact Finder answers will be distributed to participants this week.
- See the [2024-25 Oregon Extended Assessment Training Redesign](#) for information about ORExt training.
- Contact [Regional ESD Partners](#) for make-up training.
- Contact [Regional ESD Partners](#) for help with activating testing supports in TIDE.
- See the [Test Administration Manual](#) Section 5.3 for information on opt-outs and parent requests for exemption based on disability or religion.

ELPA Braille Ordering

- Now available “on demand”
- Same form: [English Language Proficiency Assessment Braille Order Fillable PDF Form](#) (school year removed)
- Order at least two weeks prior to administration
 - Orders cannot be honored in the last two weeks of the ELPA Summative test window
- Vendor-created training outlines using the Data Entry Interface (DEI)
 - Completed asynchronously

SEED Data Use Guidance Resources

1. [Data Use Tips handout](#)
2. [Professional Learning Series](#)
 - Monthly drop-in series on using SEED Survey data
 - Fridays, from 10:00 AM - 11:00 AM (PST)
 - For registration, more information, and 2024-25 dates: [Flyer](#)

Receive information about SEED data & how to interpret such data	Develop equity-centered explorations	Identify practical applications & questions	Collaborate with other district personnel on problems of practice
---	---	--	--

Questions? Contact ODE.SEEDSurveys@ode.oregon.gov

Reminder of Content Newsletters and Communities

In addition to the [A&A Update Newsletter](#), ODE offers additional content area newsletters and community groups that might be helpful to you and other educators:

- [ELA Standards Newsletter](#)
 - [Oregon Literacy Leaders Network](#)
- [Math Standards Newsletter](#)
 - [Oregon Math Leaders Network](#)
- [Science Education Newsletter](#)
 - [Oregon Science Leaders](#)
- [Migrant and Multilingual Education Newsletter](#)

Questions?

Concerns?

Recommendations

.



Next Steps and Adjournment

- A Q/A document will be posted to the [Assessment Administration Resources](#) page.
- Please contact the [ODE Assessment Team](#) if you have any additional questions or concerns.

Thank you!