



DTC Webinar

January 8, 2025

Welcome! Thank you for joining us. We will begin shortly.

Assessment Team Contacts

[Dan Farley, Ph.D.](#), Assistant Superintendent

[Andrea Lockard, Ed.D.](#), Director of Assessment

[Tony Bertrand,](#)

English Language Arts and Social Sciences

[Andy Byerley,](#) Math

[Sody Fearn,](#) K-2 Balanced Assessment

[Audrey Lingley, Ed.D.](#), SEED Survey

[Carla Martinez,](#) Administrative Support

[Crys Plattner,](#) Administrative Support

[Mason Rivers,](#) Special Education

[Mariela Salas Bao, Ed.D.](#), Science

[Ben Wolcott,](#)

English Language Proficiency



Regional ESD Partner Contacts

Assessment Support

[Amy Rockwell](#)- Regions 1 and 2
1-800-970-8372 ext. 1 or 503-540-4470

[Shannon Lyon](#)- Region 3
1-800-706-4447 ext. 3220 or 541-966-3220

Accountability and Collections Support

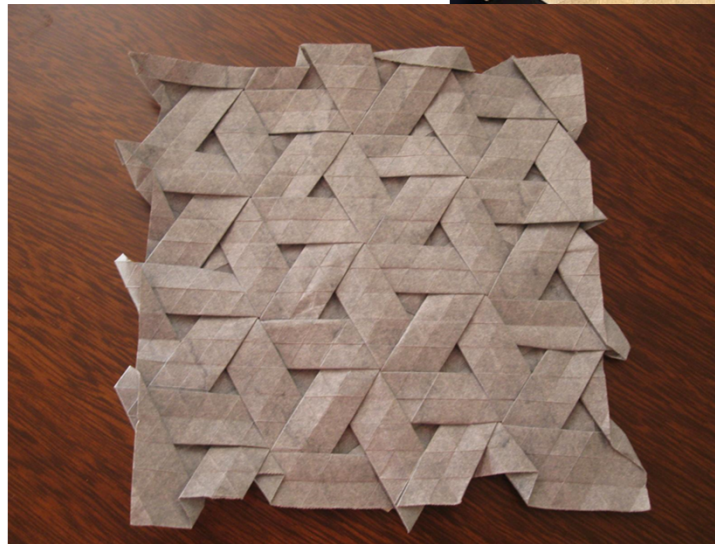
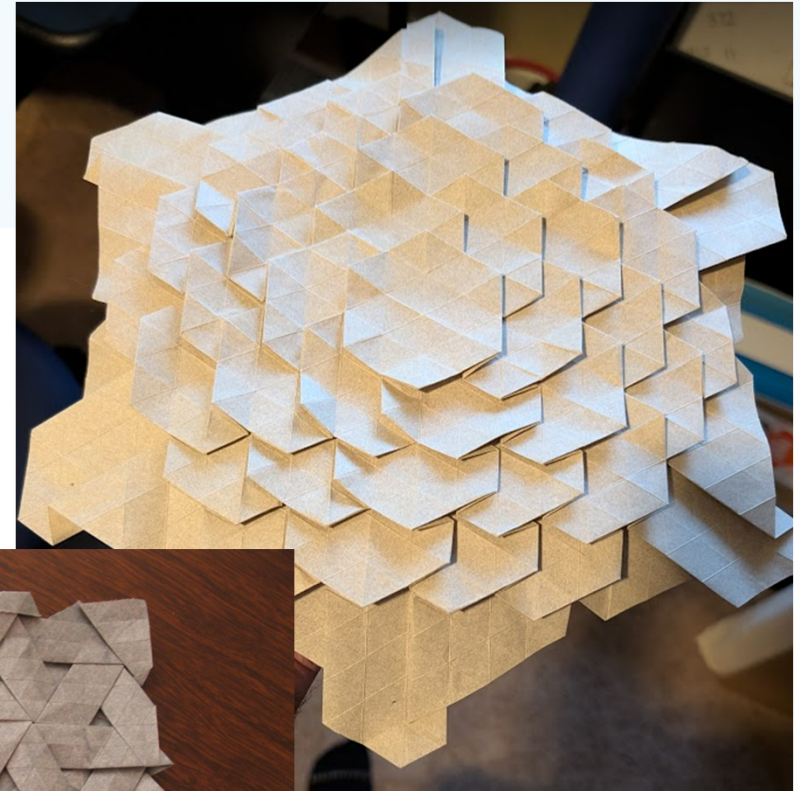
[Karen Brown Smith](#)- All regions
1-800-706-4447 ext. 3124 or 541-966-3124

[Peter Campbell](#)- All regions
1-800-706-4447 ext. 3203 or 541-966-3203

[Joe Doherty](#)- All regions (ADM, SSID, 9OT)
1-800-706-4447 ext. 3140 or 541-966-3140

Welcome to 2025!

Nez̓m̓j̓ ʔhm̓fy̓: ʔk̓-tz̓ ʔm̓fi̓ ʔt̓ ʔhw̓j̓ fy̓j̓ ʔf̓ ʔk̓-tz̓w̓
mt̓q̓i̓f̓ ~ ʔl̓ny̓x̓ ʔm̓fy̓ | tz̓q̓i̓-tz̓ ʔr̓ fp̓j̓D



Getting Started

- Today's webinar will be recorded, so please monitor your use of audio and camera.
- Please use the Q&A, not the Chat, for questions.



Photo by [Craig Pattenau](#) on [Unsplash](#)

Updates

- The A&A Update is now distributed on the first Thursday of each month (generally).
 - This streamlines communication from ODE.
 - Fewer articles will be repeated. Read carefully.
 - Time-sensitive communications will continue to be issued via the DTC Listserv.

Reminders

- Test windows:
 - ELPA Summative and Alt ELPA open 1/14.
 - Future K Screener closes 1/13. Grade K Screener opens 1/14.
- DTC Learning Session: Advanced TIDE Functionality, 1/15 @ 10:30 AM
 - Register [via Zoom](#)
- Coming Soon: February 4, 2025
 - OSAS Statewide Summative Tests (Grade 11) and
 - SEED Survey (Grade 3 - 11)
- Complete required ORExt DTC training modules and proficiency test

Chromebook Secure Browser Update Reminder

ChromeOS version 133 changed a required setting for the secure browser.

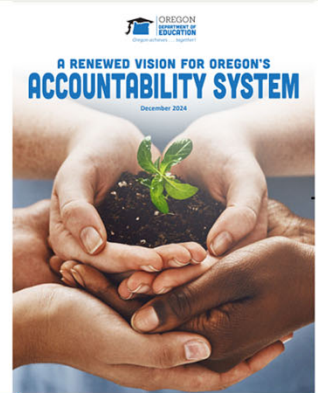
To ensure Chromebooks can be used for testing in 2025, at least one of the following should have been completed by December (**both** were recommended):

1. Ensure all devices are on the Long-Term Support (LTS) channel or the Long-Term Support Candidate (LTC) channel (see [Long-term Support \(LTS\) on ChromeOS](#)).
2. Enable the [NativeClientForceAllowed \(NaCl\)](#) setting in the ChromeOS Management Console (see [Chrome Enterprise Policy List & Management | Documentation](#)).

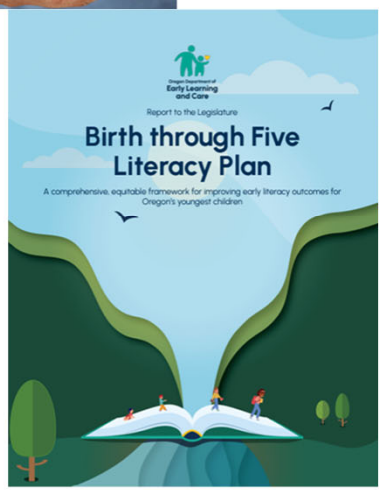
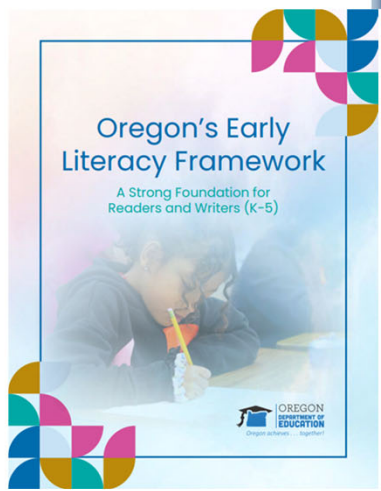
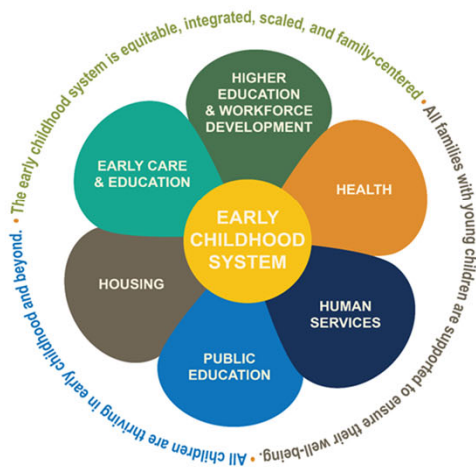
Question 1: The federal waiver to allow "Honoring Proficiency" for ELPA Summative expires in 2024-25. Are there any updates about this policy?

- [Honoring Student Proficiency on the HS ELPA Summative](#)
- ODE submitted a formal request to renew this policy on 1/2/25. Along with renewal, ODE asked for improvements such as:
 - Extending the policy to include the Alt ELPA and Grades 6-8.
 - Remove policy expiry (remove need to request renewal every five years).
 - Improve scoring to reduce odd results for students who score very close to the level 4 threshold.
- The USDE has ~120 days to respond to ODE's request.
- This policy **remains available and will be applied** to students testing in spring 2025.

Early Learning Transition Check-In (ELTC) Fall 2025 Pilot Update: Part 1



STUDENT SUCCESS ACT



Early Learning Transition Check-In (ELTC) Fall 2025 Pilot Update: Part 2

Spring 2022

- Six Families
- Representative of Diverse Perspectives

Fall 2022

- Nine schools / Nine Districts
- 300+ Families Participated
- Oregon's Kitchen Table Family & Educator Feedback

Fall 2023

- 30 Schools / Nine Districts
- 1000+ Families Participated
- Oregon's Kitchen Table
- Family & Educator
- Community Partner

Fall 2024

- 50 Schools / 15 Districts
- 1800+ Entries
- Survey

ELTC: Fall 2025 Pilot Planning

- **DTC Role (TAM, Table 1.4)**
 - Coordinating/Managing all aspects of...
 - may not be facilitating the PD, but making sure training has been completed
 - Communication
- **Pilot Fall 2025 [Interest Form](#) by January 31, 2025**
 - Overview of Pilot Timeline and Requirements
 - Onboarding new school districts
 - Connect with other district leaders from previous pilots

Accessibility Reminders: Mouse Pointer & Color Choices

Mouse Pointer & Color Choices are now universal tools available to all students.

Instructions and Help

You may select the question mark button to access this Help Guide at any time during your test.

+ Text-to-Speech +

Test Settings

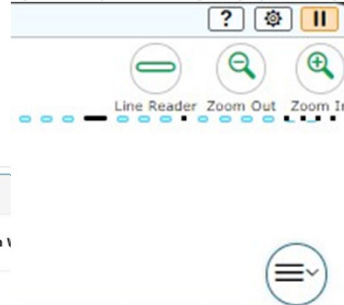
Use this button to review your test settings.

View Test Settings

Help Guide

The Help Guide and test rules can be accessed at any time by using the button on the top part of the test page.

View Help Guide



Universal Tools	
Universal Tools	1 ELA-CAT
Color Choices ?	Black on White ▾
Mouse Pointer ?	System Default ▾

Highlighter	On with multiple colors
Line Reader	ON
Mark for Review	On
Mouse Pointer	System Default ▾

System Settings

Navigation Language

English ▾

Change colors

Black on White ▾

Ok

Cancel

Accessibility Reminders: Tool Strips

New feature in TDS called *Tool Strips*

1



Enter the value of n for the equation $5^n = 5^{11} \cdot 5^3$.

Accessibility Reminders: Updated TIDE Settings for Text-to-Speech

Updated TIDE settings for *Text-to-Speech*

2023-24

2024-25

ELA CAT

- Off
- Items (Designated Support)
- Stimuli (Accommodation)
- Items & Stimuli (Accommodation)

Math, ELA PT

- Off
- Items (Designated Support)
- Stimuli (Designated Support)
- Items & Stimuli (Designated Support)

ELA CAT

- Off
- Items (Designated Support)
- Items & Stimuli (Accommodation)

Math, ELA PT

- Off
- Items & Stimuli (Designated Support)

Accessibility Reminders: Word Prediction

Embedded accommodation *Word Prediction* will now have an audio preview option.

- TIDE update January 14.
- Any student who has *Word Prediction* set to “On” in TIDE prior to the update will be updated to “on without audio” (current functioning).
- Any student who needs “on with audio” should be set in TIDE after the update.

☆ ODE recommends that students practice with *Word Prediction* “on with audio” setting before using it on a test.

SEED Data Use Resources

- SEED Data Use [Professional Learning Series](#)
 - Monthly, Fridays from 10:00-11:00 AM, via Zoom (1/10/24 is the next one)
 - January focus: Understanding and using state-level results
 - Recording from 12/6 is available on the SEED website
- [Data Use Guidance](#)
 - ODE recommends reviewing this resource before diving into SEED data
- [State Report](#)
 - State level summary results found on the [Assessment Group Reports webpage](#); scroll down to the bottom of the list

Feedback on District SEED Data

The 2023-2024 school year was the first fully operational year of the [SEED Survey](#).

ODE is seeking feedback on the current district-level data sharing system and approach. Our goal is to increase the use and accessibility of the district-level SEED data.

If you have accessed your district-level data, complete [this form](#) to share your thoughts about it with ODE.

Share the form with any colleagues who are working directly with SEED data.

If you have questions, contact **Corine Tyler** at corine.tyler@ode.oregon.gov

Survey Comparison Resource

As a reminder: the ODE Assessment team is responsible for the administration of the Student Educational Equity Development (SEED) Survey.

The ODE Office of RADAR, with the Educational Advancement Council (EAC), is responsible for the Elevating Voices in Education Workforce (EVE) Survey.

Both surveys open on February 4, 2025.

Refer to the table on the [SEED webpage](#) under the “Survey Administration Resources” accordion for more information about three of the surveys required to be made available this year: [Summary of 2024-25 Survey Information](#)

Questions?

Concerns?

Recommendations

.



Next Steps and Adjournment

- A Q/A document will be posted to the [Assessment Administration Resources](#) page.
- Please contact the [ODE Assessment Team](#) if you have any additional questions or concerns.

Thank you!