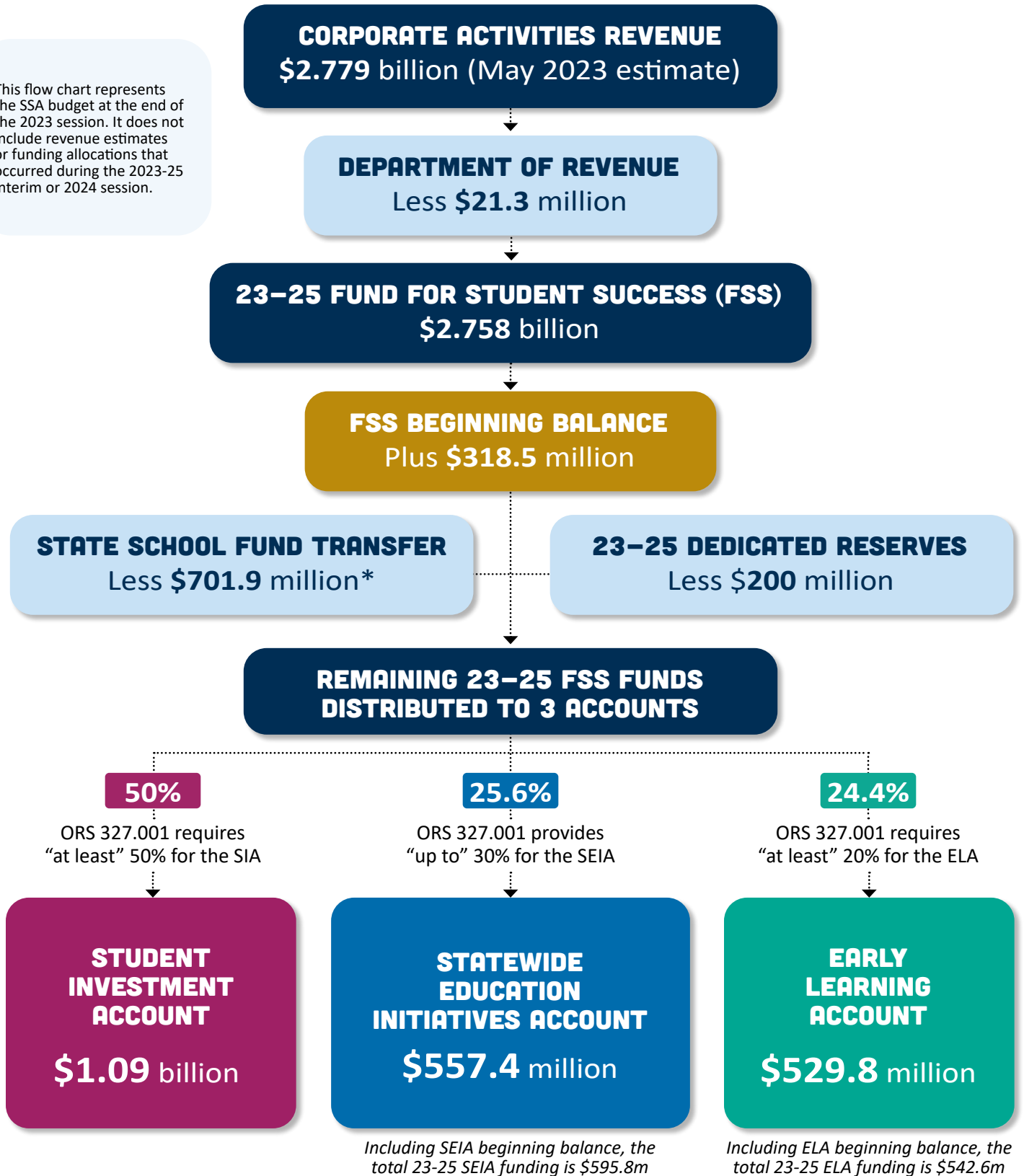




2023-2025 Student Success Act: How the Revenue Flows

This flow chart represents the SSA budget at the end of the 2023 session. It does not include revenue estimates or funding allocations that occurred during the 2023-25 interim or 2024 session.



*The State School Fund distribution equals an estimate of the lost General Fund due to the Personal and Corporate Income Tax changes enacted in HB 3427 (2019) plus \$40 million dedicated to the High Cost Disabilities Account.

Note: Some totals may not foot due to rounding.

