



WEST MULTNOMAH
Soil & Water Conservation District

Canopy Weed Programs

Mary Logalbo, Urban Conservationist

Michael Ahr, Forest Conservationist

Program Genesis

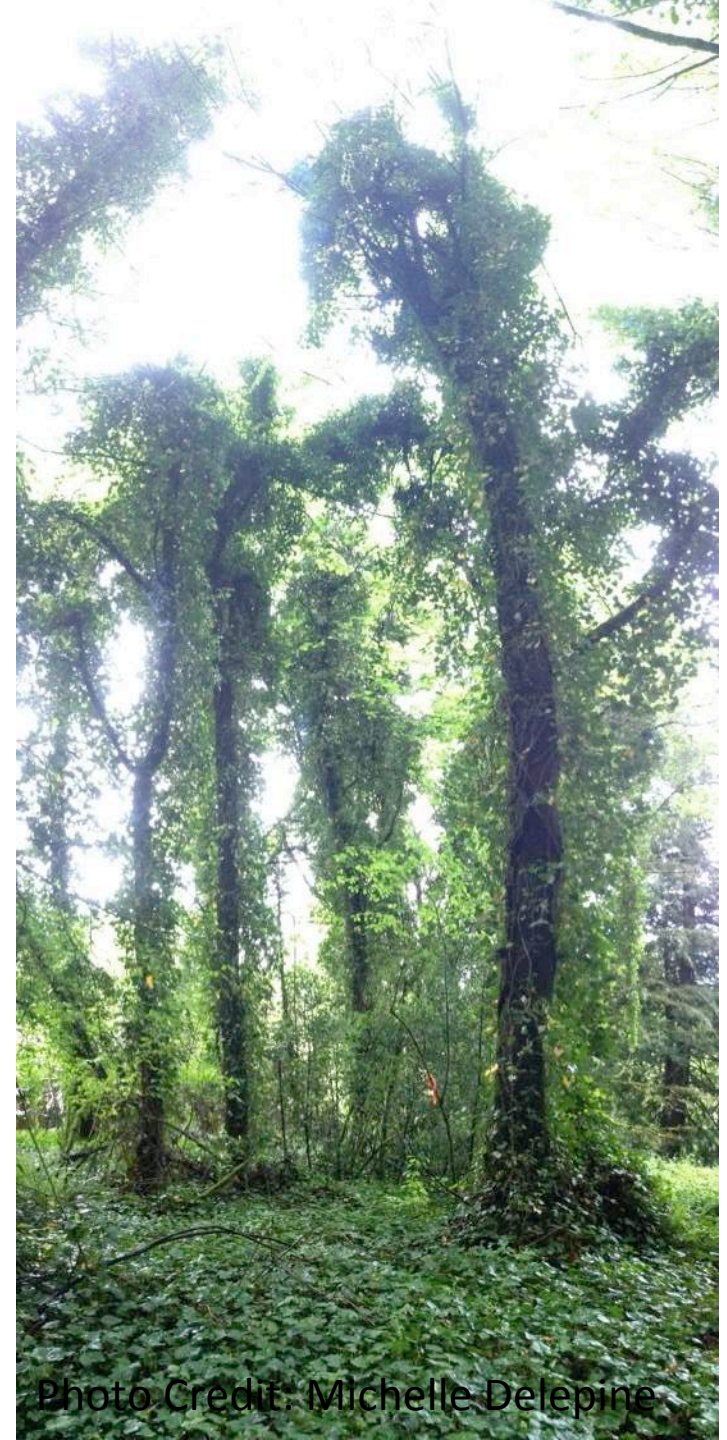
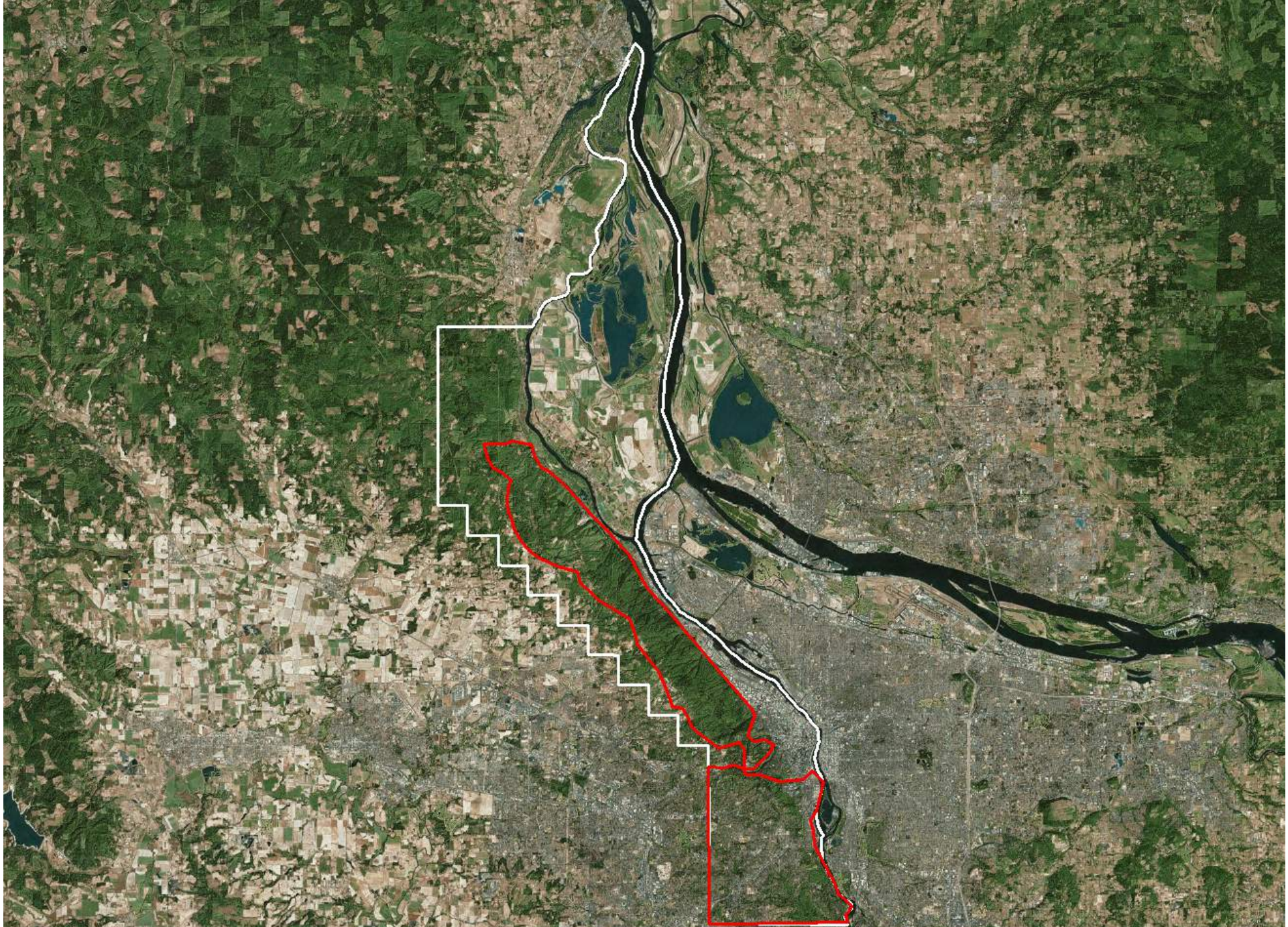
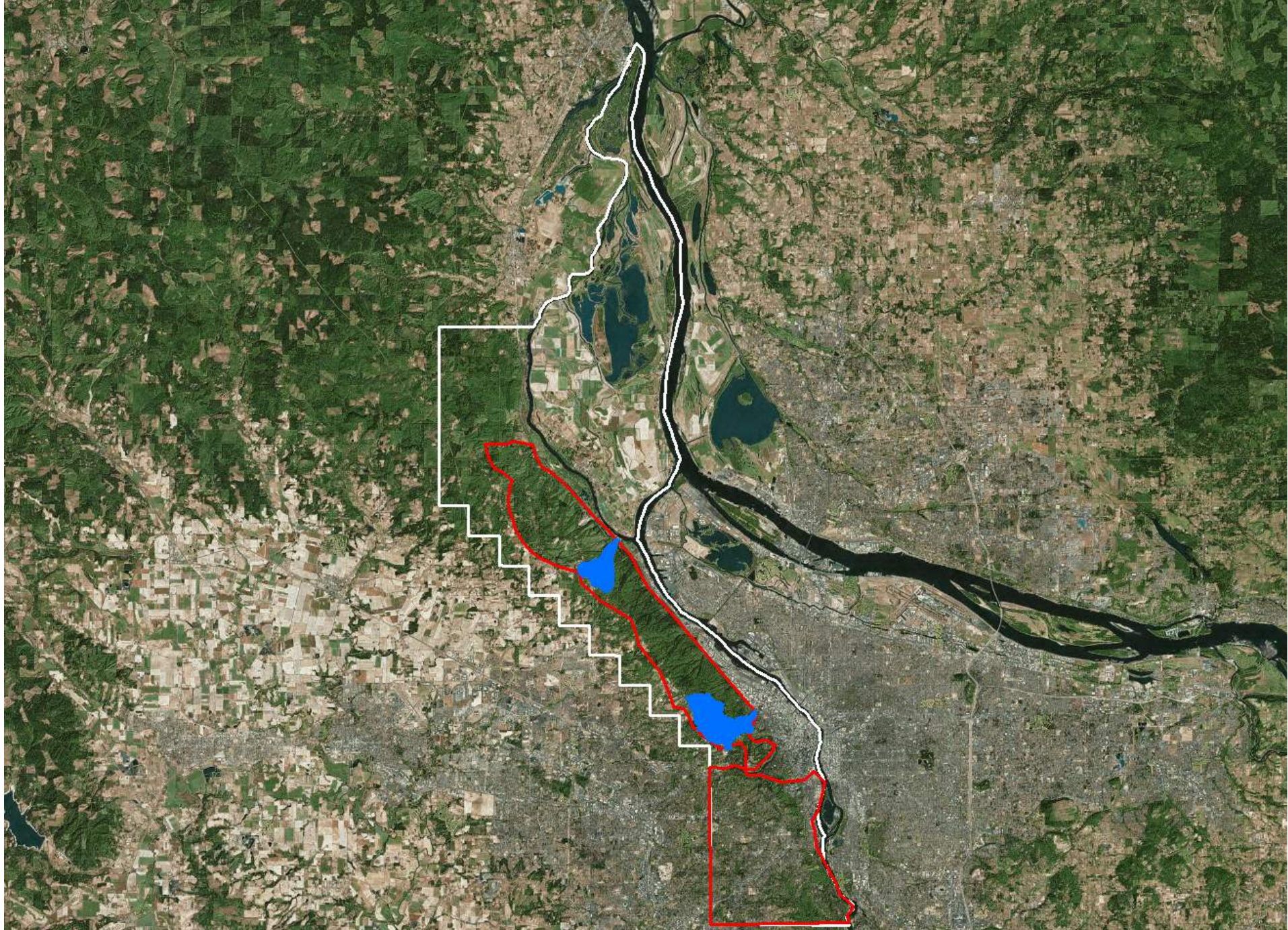


Photo Credit: Michelle Delepine





Getting the “heavy lifting” done...



Maintenance & Outreach



Mixed results



Demos in the Urban Core



2011 Canopy Weed Pilot Launch



Photo Credit: Cody Chambers, FPC



Photo Credit: Matt Wagner, FPC

- Mass mailing to 47 landowners - 11 permission (23%)
- Contractor Hired
- 3424 Trees
- 56 Acres

Partnering & Gaining Momentum



ENGLISH IVY
Hedera helix

NATIVE PLANTS ARE UNDER ATTACK IN FOREST PARK.

Forest Park is under attack. Invasive plant species such as English Ivy have gained a foothold and are taking a heavy toll on native trees and plant life. The consequences reach far beyond the park's boundaries, to the quality of the region's air, water and wildlife habitat. Help the Forest Park Conservancy in its fight to protect one of Portland's natural treasures. Find out how at RestoreForestPark.org.



ENGLISH IVY
Hedera helix

THE TREES OF FOREST PARK ARE IN DANGER.

Forest Park is under attack. Invasive plant species such as English Ivy have gained a foothold and are taking a heavy toll on native trees and plant life. The consequences reach far beyond the park's boundaries, to the quality of the region's air, water and wildlife habitat. Help the Forest Park Conservancy in its fight to protect one of Portland's natural treasures. Find out how at RestoreForestPark.org.



2012 FPC Crew Work Begins

- Mass mailing to 300 landowners – 45 permissions (15%)
- FPC Hired
- 4331 Trees
- 115 Acres



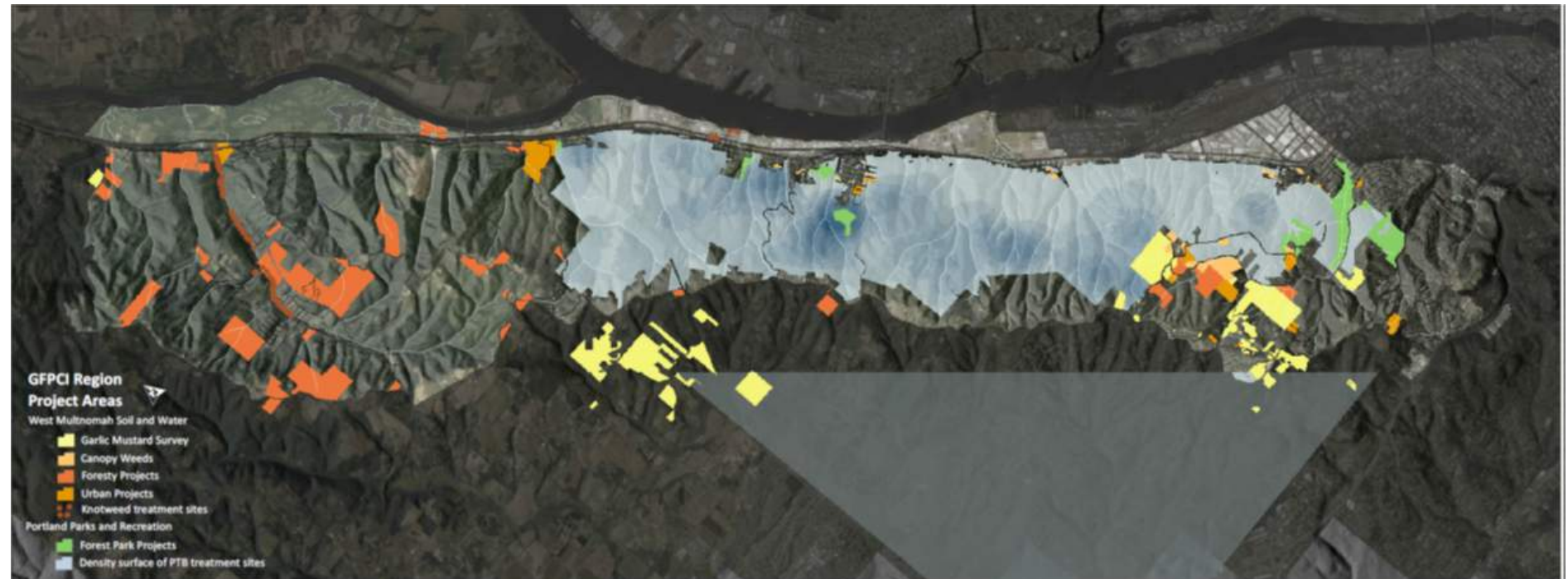
2013-14 Door-to-Door

- Mass mailing to 122 landowners – 45 permissions (39%)
- Linnton Community Association & FPC Target Door-to-Door
- 5232 Trees
- 187 Acres
- GFPCI Launch



2014-15 Moving Outward

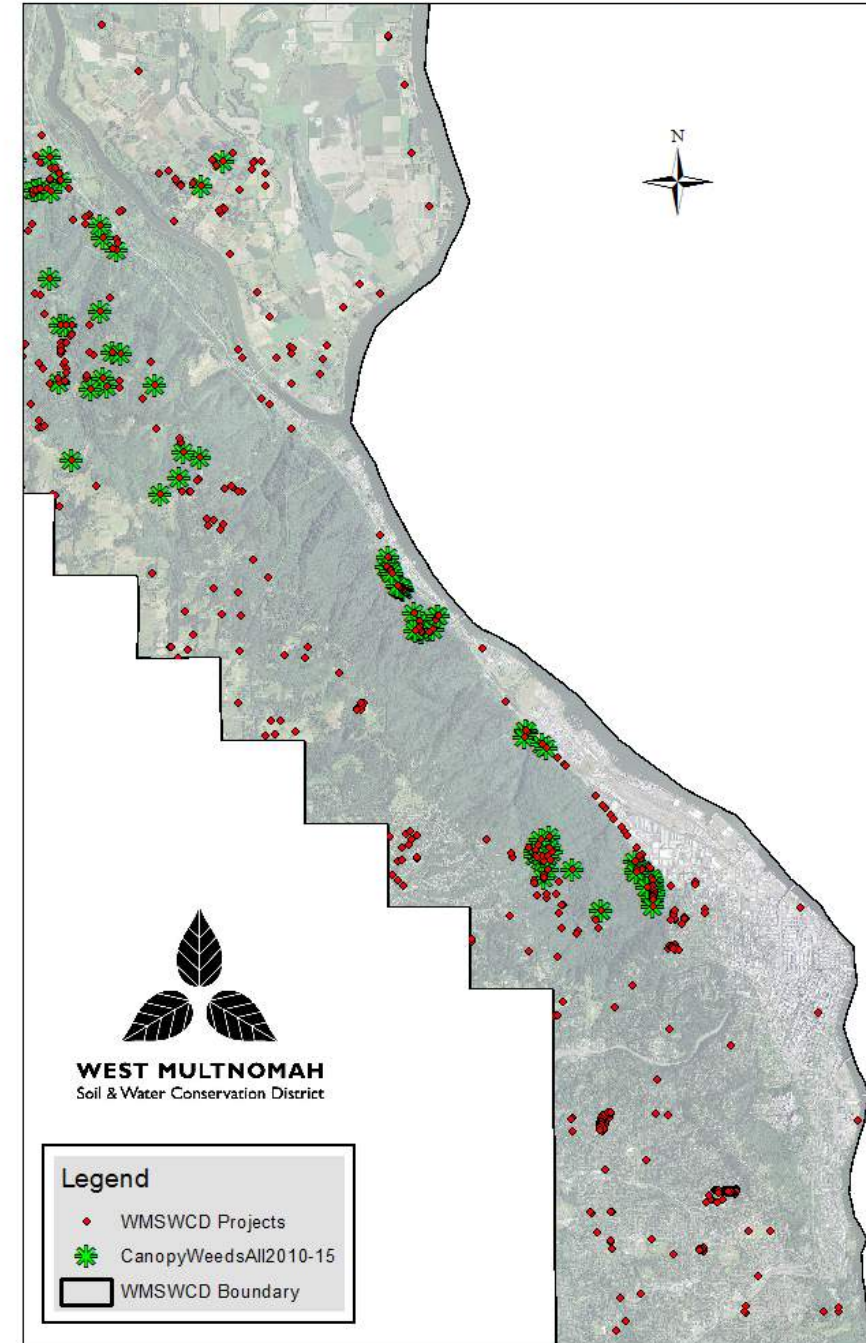
- Small mailing to 29 landowners & door-to-door – 42 permissions (144%)
- 3520 Trees
- 48 Acres



Total Stats

- 143 landowners maintaining tree ivy
- 500+ landowners reached
- 16507 trees cleared
- 406 acres impacted
- \$80K spent (\$20K/year)
- 21 Urban Conservation Plans
- 18 Acres Holistically Restored

Canopy Weed & Restoration Projects

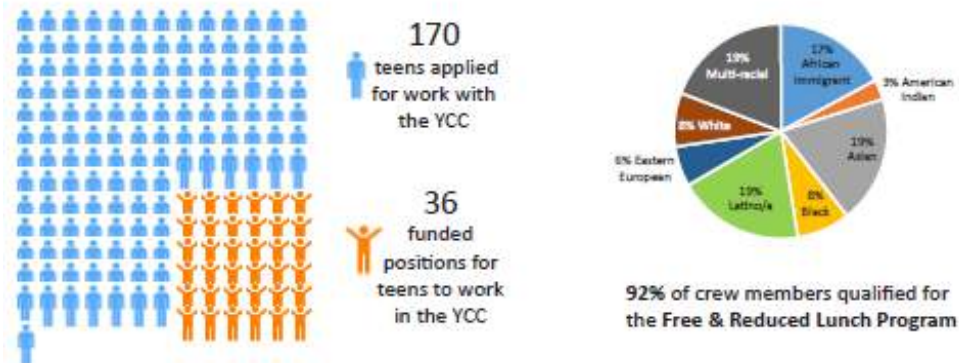


Current program

- Encouraging neighbors to reach out to neighbors
 - Reaching absentee landowners!
- Working with former Youth Conservation Corps (YCC) members

Teens want to work in natural resources

YCC attracted and hired from a diverse applicant pool. These emerging environmental leaders will have the opportunity to participate in paid internships with PP&R through age 25. Demand for environmental jobs amongst Portland's youth is strong!



Looking Forward

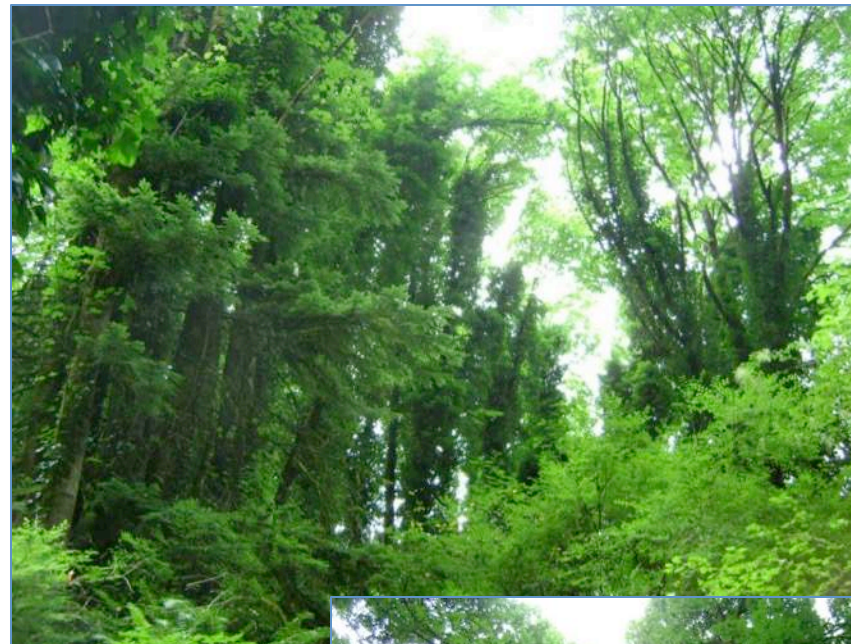
- Door to Door Listening Surveys (NICE)
- Expanding Project to Other Natural Areas
- Continuing to Buffer Forest Park
- Continued Demo Sites
- Strategic Holistic Restoration



Photo Credit: Gody Chamberlain, LLC

Rural Strategy

- Reduce ivy impact
- Get a basic service to many people
- Focus
 - Where we can make a difference
 - Where we want to know more people



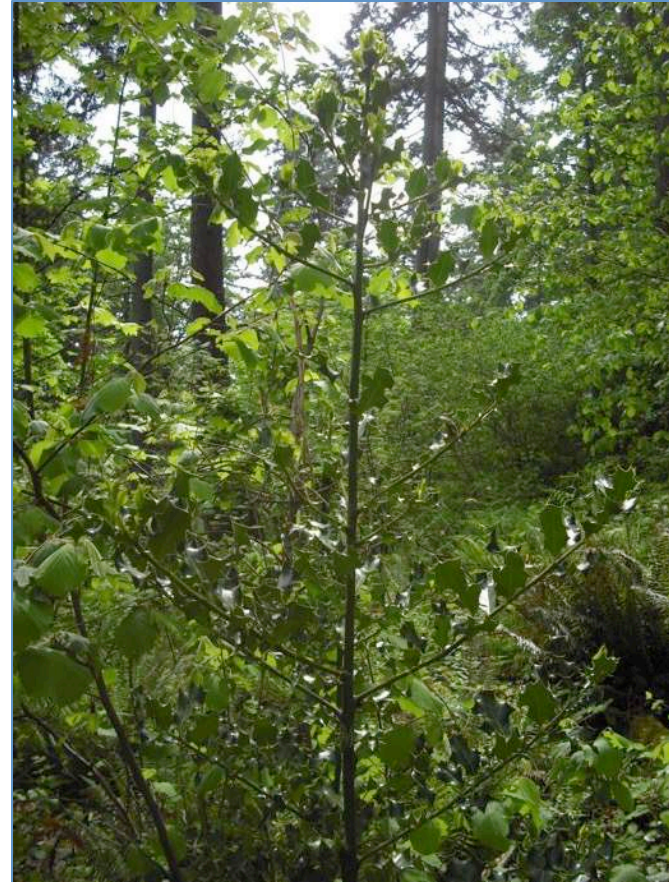
Partners

- Professional Crews
 - Large Areas
 - Herbicide applicators
 - Fast
 - Affordable
- Forest Park Conservancy
 - Help with outreach



Control Methods

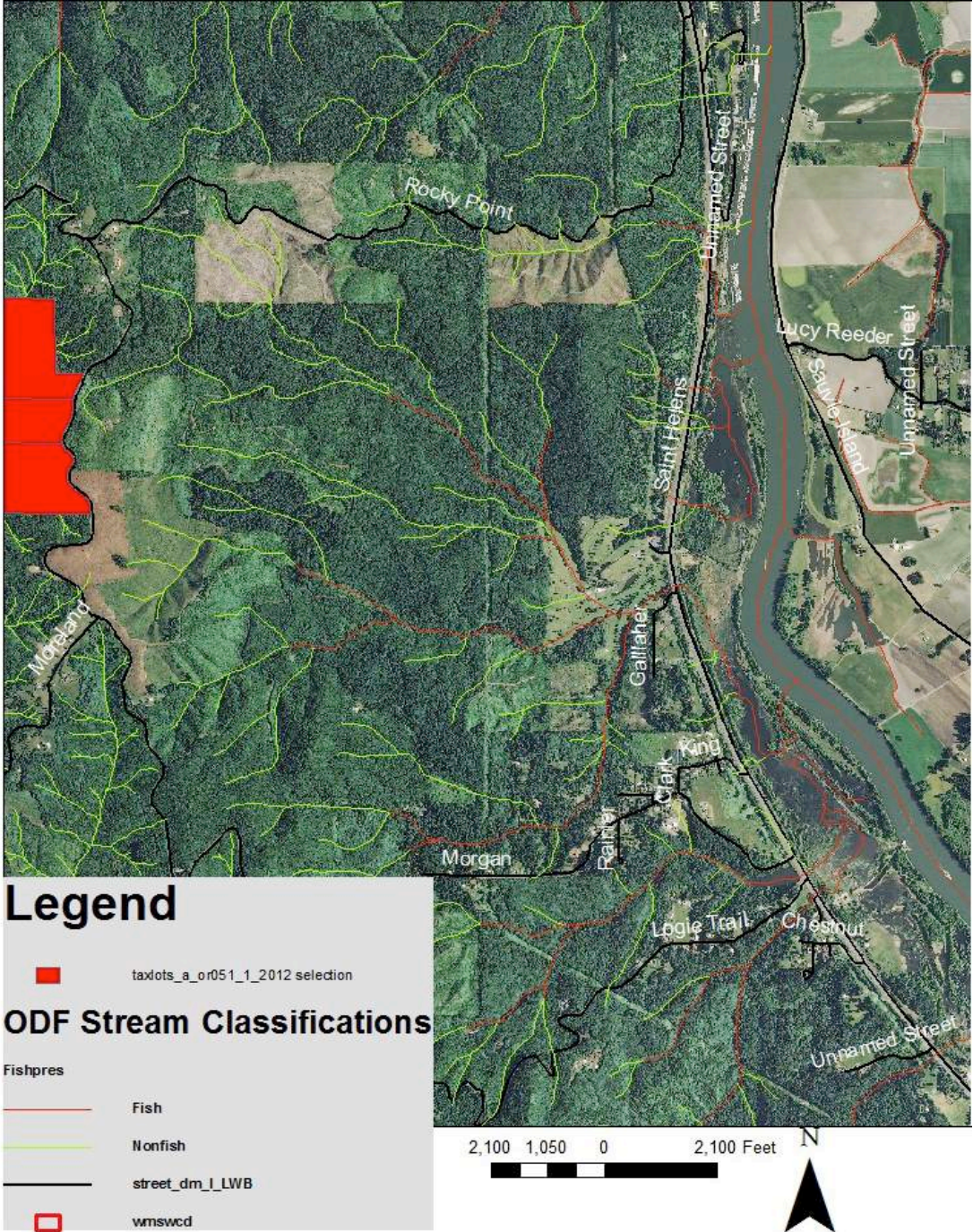
- Cut Stump
 - 80% triclopyr
 - Small squirt bottles
- Add in holly and laurel
 - Did not add significant labor
- Tree Saver Rings



Outreach

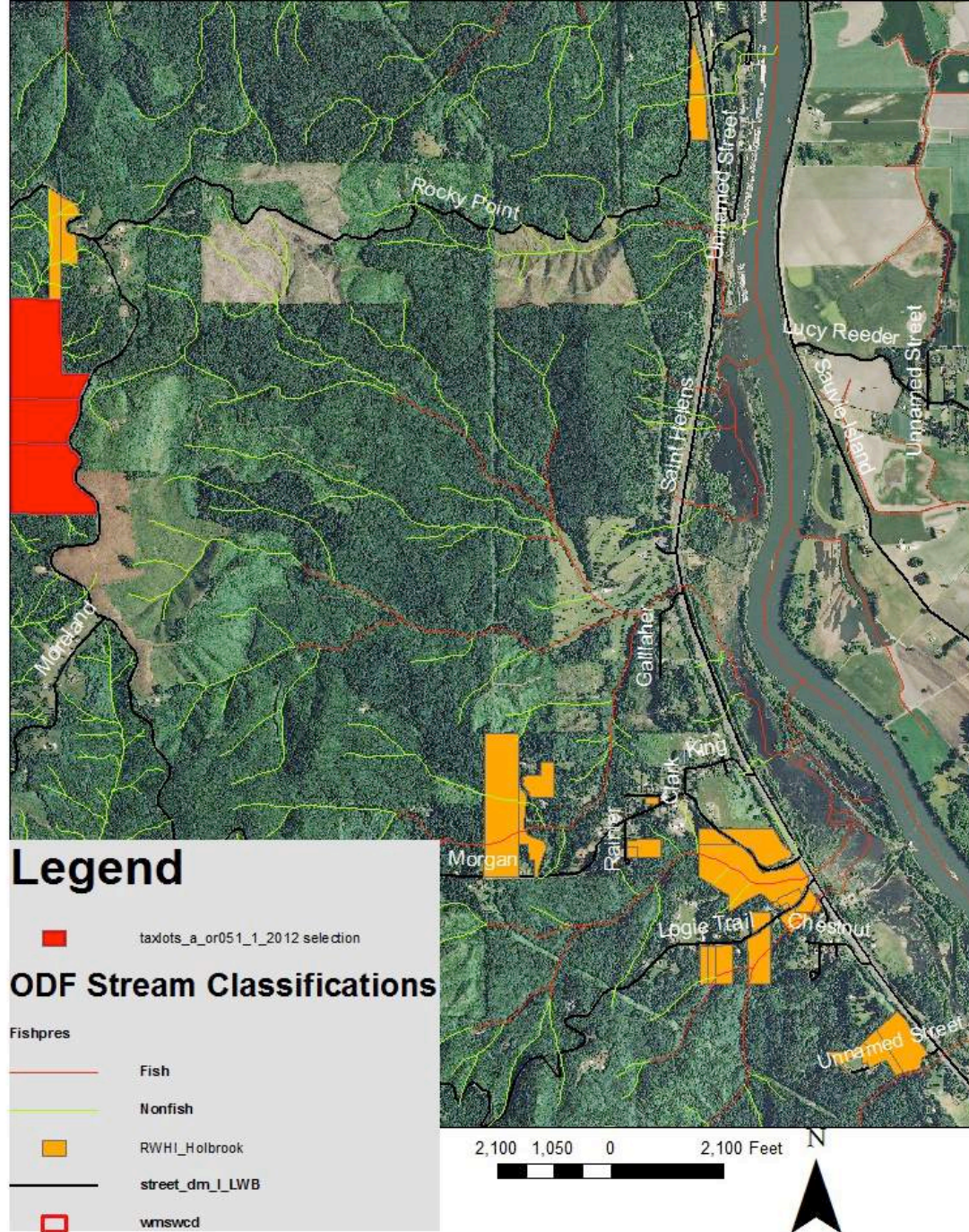
- Choose area based on criteria
 - Ivy management would make a difference
 - We want to work with more people in the area
- Mailing
- Follow up calls
- FREE
- Try to schedule time with landowner

Holbrook

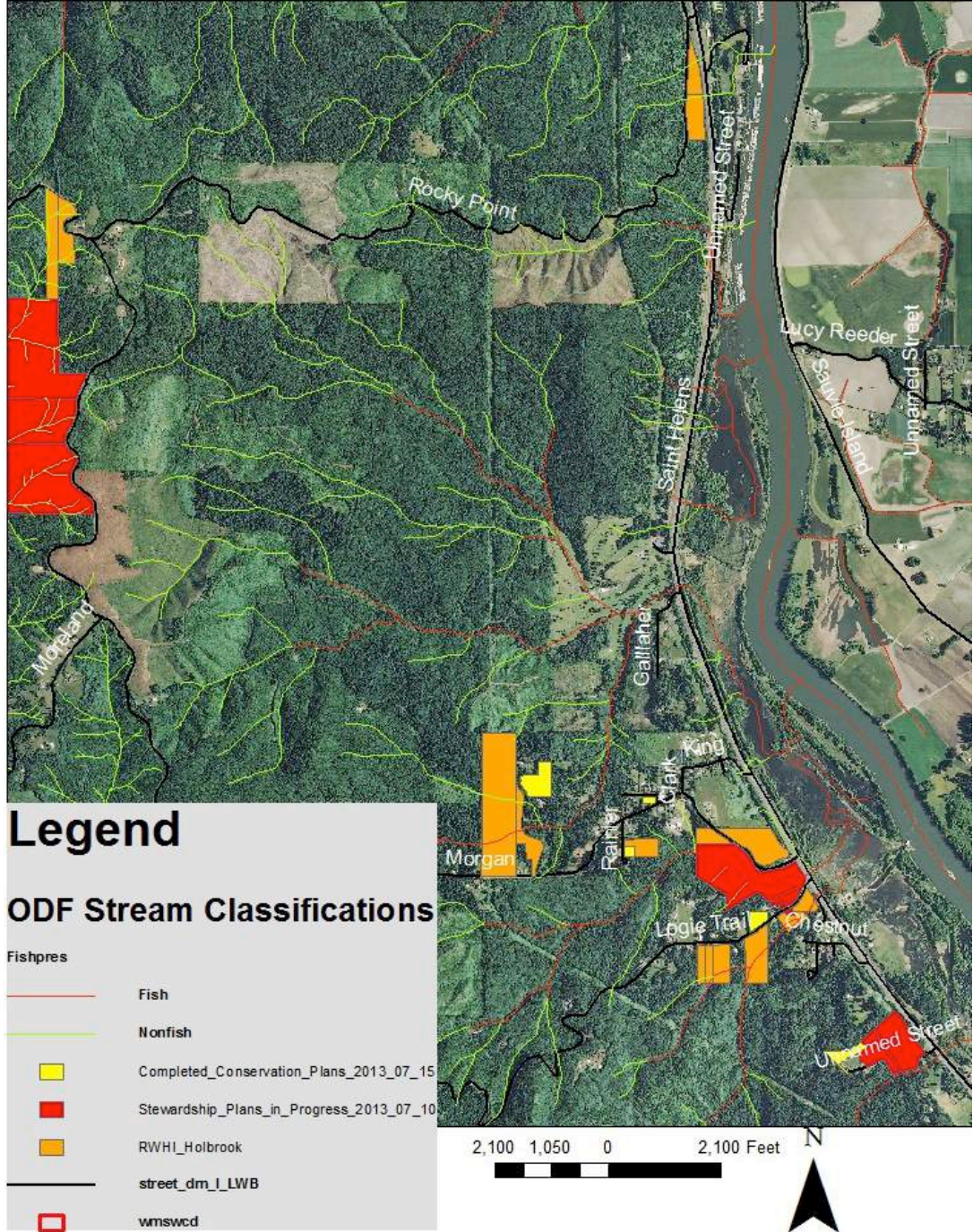


Holbrook

- 19 properties
- 186 acres

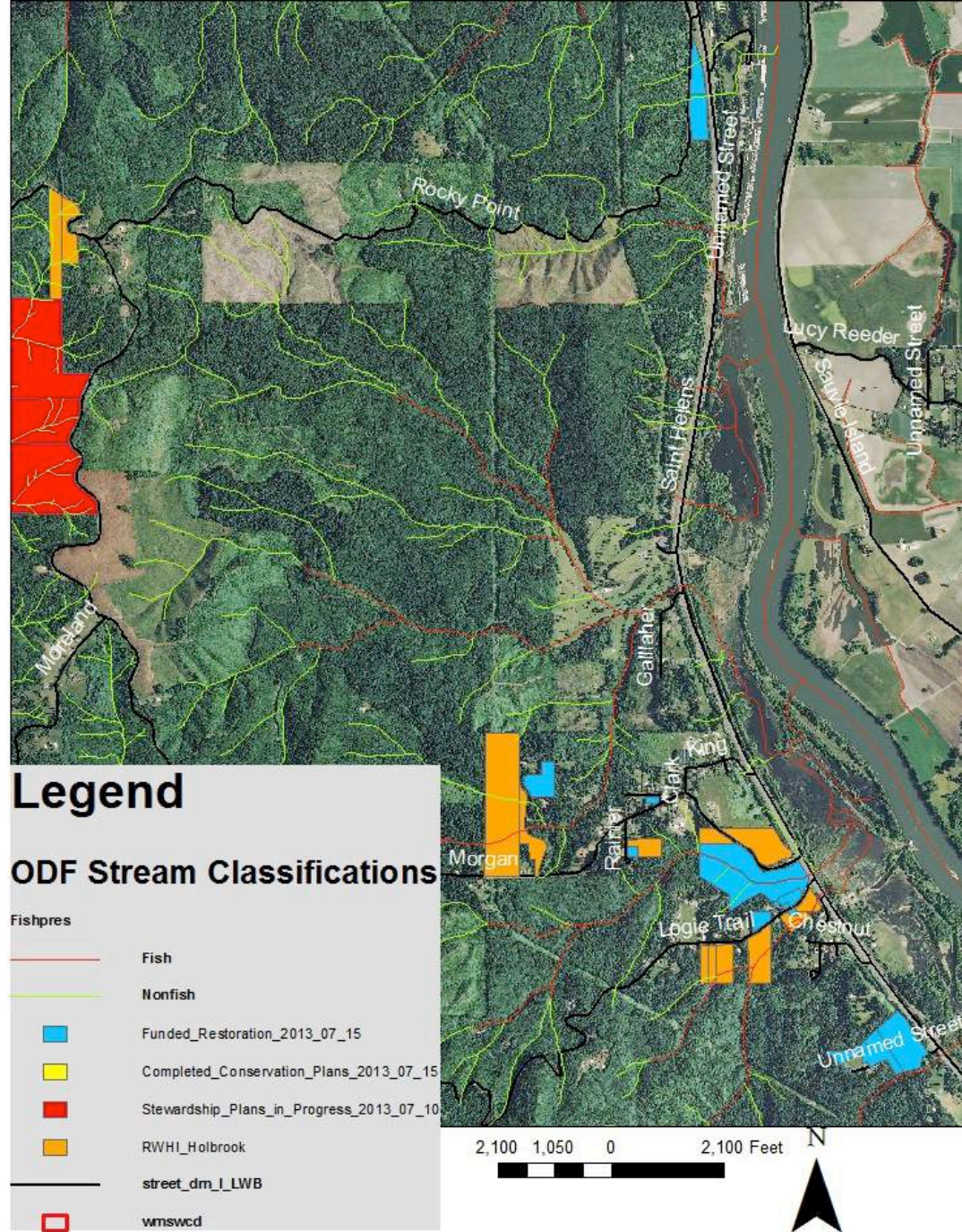


Holbrook



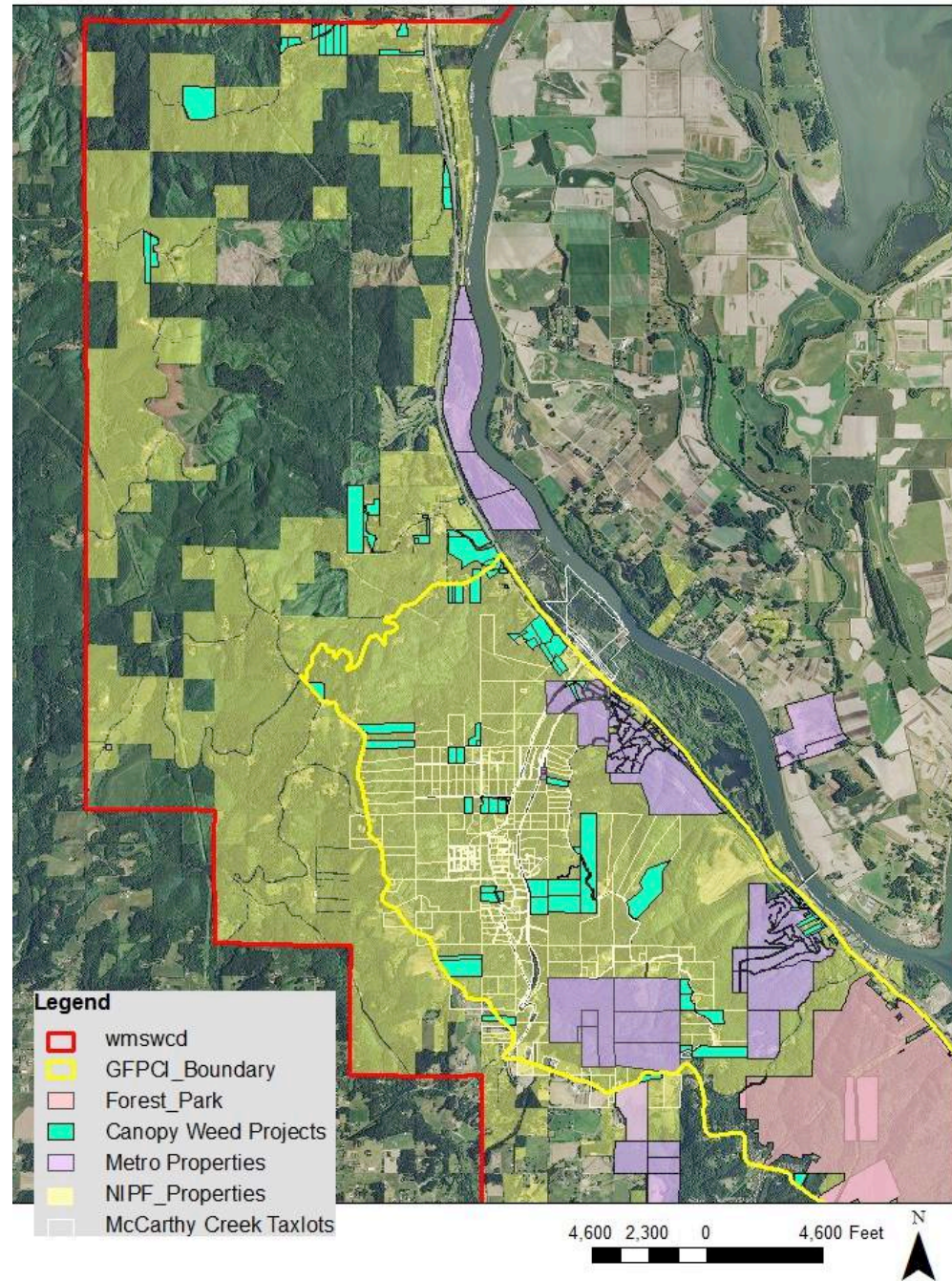
Holbrook

- Holbrook Community
 - Properties treated: **19**
 - Conservation Plans: **4** (69.4 ac.)
 - Funded Projects: **8** (42%)
 - Cost of tree ivy removal: **\$5,230**



Progress

- Properties Treated: **75**
- “No” to herbicide: **10**
- Participating acres: **665**
- Target Population: 14,800 ac. (**4.5%**)
- Cost of crew time: **\$15,317.24**



Challenges

- Follow up during outreach phase
 - 2nd and 3rd attempts
- Sometimes rushed
- People think we're treating ground ivy
- "Ivy isn't dead"
- Very small sites
- Chemical vs. Tree saver rings?



Sauvie Island

Sauvie Island Canopy Weed Program



0 0.325 0.65 Miles



Sauvie Island Canopy Weed Program



Legend
Sauvie_properties_w_ivy

1,300 650 0 1,300 Feet



Sauvie Island

- Importance of Ivy Control
 - EDRR approach
 - Oregon white oak
- The Hartline culture of caring and awareness 😊



Sauvie Island Canopy Weed Program



Legend
Sauvie_properties_w_ivy

1,300 650 0 1,300 Feet



Sauvie Island Successes

- Leads to great relationships, large projects
- Volunteers on sites with 3 or 4 trees
- Bringing in the “heavy lift”
- Habitat



Thank you!

