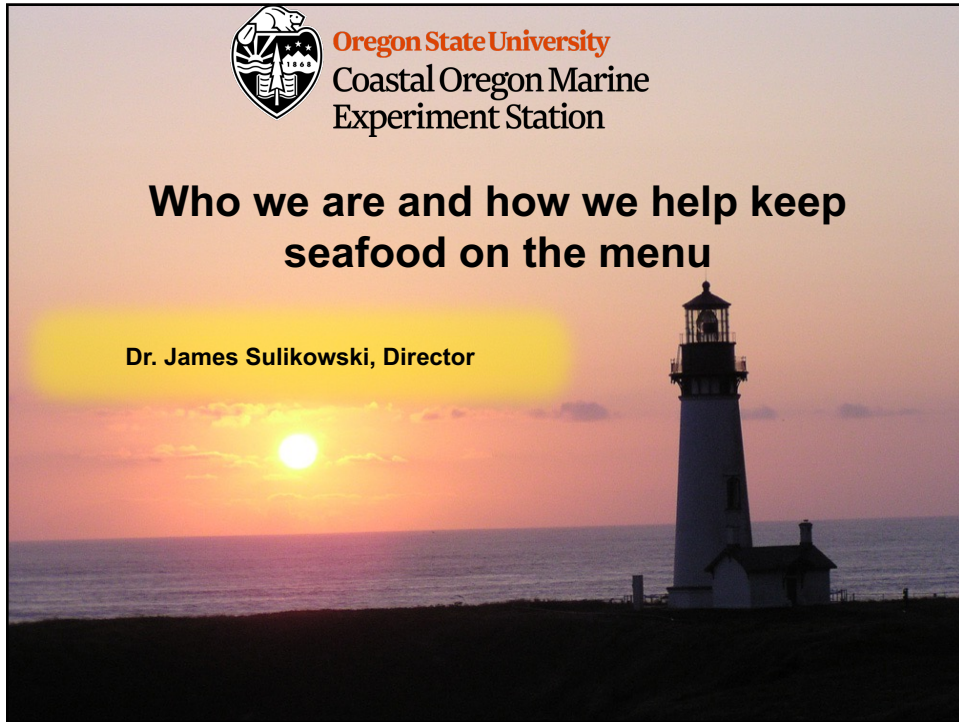




Oregon State University
Coastal Oregon Marine
Experiment Station

Who we are and how we help keep
seafood on the menu

Dr. James Sulikowski, Director



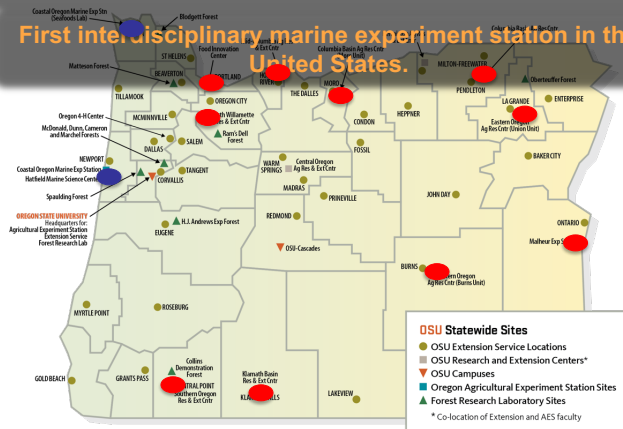
1



Oregon State University
Coastal Oregon Marine
Experiment Station

Established in 1989 by Oregon fishers and University leaders to
develop a better understanding of the marine environment and to
explore ways of ensuring sustainable fisheries.

First interdisciplinary marine experiment station in the
United States.



2

Largest and most diverse applied marine research organization in Oregon

COMES - Newport



Pre-harvest

COMES - Astoria



Post-harvest



3



Oregon State University
Coastal Oregon Marine
Experiment Station

Mission

To conduct research that directly benefits Oregon's coastal communities, the nation, and the world . . .

- Sustain marine industries, resources, and ecosystems.
- Foster partnerships with national and international scientists, members of the fishing and seafood industries, government agencies, and non-governmental organizations.
- Engage in interdisciplinary, collaborative, research that solves complex problems in marine resource science and management.

4

COMES - Newport



Pre-harvest

5

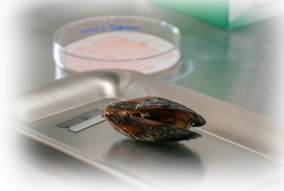


Oregon State University
Coastal Oregon Marine
Experiment Station

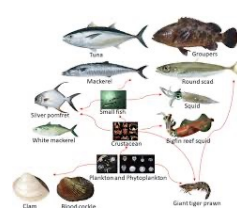
Fisheries and
Conservation Genomics



Environmental
Contaminants



Marine Fisheries and
Population Dynamics



Marine Megafauna



6

Environmental Contaminants

Fisheries and Conservation Genomics

Marine Megafauna

Integrated Marine Fisheries

Population structure
Genetic monitoring

Stock Assessment Models

Marine Spatial Planning
Adaptive Management

Foraging Ecology in PNW

Biological responses to climate variation

7

Aquaculture

Probiotics for Oyster Disease Resistance

Effects of Ocean Acidification on Oyster Health and Resilience

8

COMES - Astoria



Post-harvest



9

Seafood Research & Education Center



Biochemistry of Seafood Products



Foodborne Pathogens



Shelf-life studies

10

SURIMI JAE PARK SCHOOL
SINCE 1993
Fishbone as a food grade phosphate for surimi cryoprotection

PacificSeafood
Crab, Salmon, Shrimp Shelf-life Projects

Ecotrust
Utilization of Shad as a fertilizer

ARF Albacore Research Foundation

1) Heavy metal/Nutrition: in collaboration with NOAA
2) Frozen tuna storage: in collaboration with Oregon Sea Grant, FIC

Research Projects

11

Seafood HACCP Alliance
Oregon Coast Visitors Association, Oregon Albacore Commission and Pacific Seafood.

SPA SEAFOOD PRODUCTS ASSOCIATION
Seafood Quality and Good Fisheries Practices for Whitefish and Salmon (tuna planned)

CERTIFIED QUALITY FOODS
Guidance on food safety hazards in seaweed.

NATIONAL FISHERIES INSTITUTE INC.
Provide industry guidance and best practices for "sushi grade" designation.

Trainings & Outreach

12

