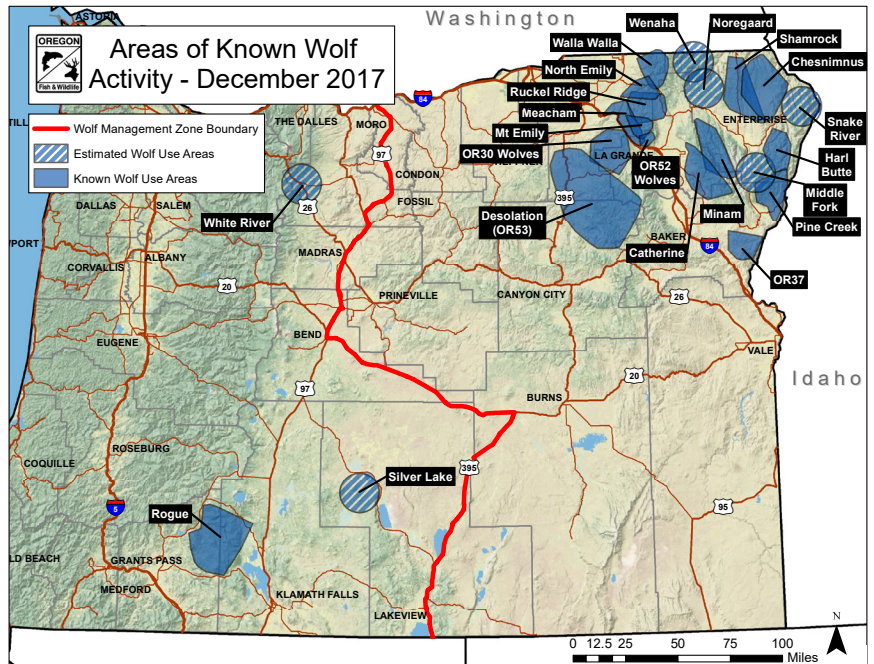


Wolf Depredation Compensation & Financial Assistance

The ranching and farming industries are vital components of the Oregon economy. With the return of gray wolves to Oregon, conflicts with livestock and working dogs have occurred. As in other western states with wolf populations, some livestock producers will be affected financially due to direct losses of livestock from wolf depredations.

On June 24, 2011, the Oregon Legislature passed House Bill (HB) 3560, which directed the Oregon Department of Agriculture (ODA) to establish and implement a Wolf Depredation Compensation and Financial Assistance Grant Program. Through this program, ODA provides pass-through grants to counties to establish and implement county wolf depredation compensation programs of their own, under which the following apply.



Map courtesy of the Oregon Department of Fish and Wildlife.
<http://www.dfw.state.or.us/wolves>

- » Compensation can be paid to persons for livestock or working dogs killed or injured due to wolf depredation.
- » Financial assistance can be provided to persons who implement livestock management and/or nonlethal wolf deterrent techniques designed to discourage wolf depredation of livestock.
- » Compensation can be paid to persons for livestock or working dogs that are missing due to wolf depredation.
- » Compensation can be paid to counties to cover allowable expenses incurred while implementing a wolf depredation compensation program in their county.

ODA's Wolf Depredation Compensation and Financial Assistance Grant Program complements and supports Oregon Department of Fish and Wildlife's Wolf Conservation and Management Plan in the area of developing and maintaining a cooperative livestock producer assistance program that proactively minimizes wolf-livestock conflict and assists livestock producers experiencing wolf-related livestock losses.

