

2024 Transportation Growth Management Grant Application

Instructions

Be sure to download and review the [2024 Application Packet](#) before filling out this grant application.

You can save your progress and revisit this form at any time by clicking the "Save" button at the bottom of the page.

Applications must be received by July 31, 2024 at 11:59 p.m. (PDT)

Applicant information

Instructions: Complete this information for the applicant. Provide both a designated contact and an authorized representative (if different than the designated contact) for your entity.

Response instructions are on page 9 of the 2024 Application Packet.

Primary applicant jurisdiction

Mailing address

Address Line 1

Address Line 2

City

State

Zip Code

Website

Contact person name

First

Last

Contact person title

Island City Contract Planner

Contact phone

(503) 563-6151

Contact email

jaime.crawford@aks-eng.com

Name of person empowered to sign the agreement with ODOT, if different from the applicant contact

Karen

First

Howton

Last

Title of above named person

Island City City Recorder

Phone

(541) 963-5017

Email

karen@islandcity.org

List co-applicants (if a joint project)

List co-applicants (if a joint project)

Providing match?

Upload your resolution or authorized letter with associated meeting minutes from the governing body of applying jurisdiction(s) here:

IC_TGM_Res of Support 2024.pdf

PDFs only. Max 2mb per file.

Project information

Response instructions are on page 10 of the 2024 Application Packet.

Project title

City of Island City: Transportation System Plan Update

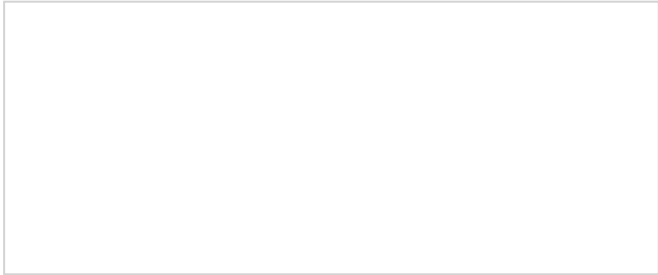
Project area: Using either of the two fields below, attach a map of the project area or describe the area your project is located in.

Option 1: Project area map

IC TGM Area Map.pdf

PDFs only, 1 file maximum, 2mb file size limit.

Option 2: Project area description



ODOT region (1-5)

[ODOT Region Map](#)

Region 5

Refer to the region map if you are unsure of your region.

Type of grant

Category 1: Transportation System Planning

Summary description of project

Island City has had increased development interest and land use applications in two main areas of our city: on vacant residential land within the center of the UGB, and on vacant commercial/industrial land north of Island Avenue. A shared conflict for developing these lands is a lack of internal transportation connections and an unwillingness to develop those connections since they're seen as "unrealistic" and "outdated".

This update will focus on planning realistic connections in partnership with property owners. It will also focus on outreach within the larger community to ensure development of an equitable transportation system (multimodal, connecting neighborhoods with commercial areas and work centers, creating public access to natural features within the city, etc.).

This grant will create clarity for development through an updated TSP, updated public works standards, and comprehensive plan / code amendments for consistency across planning documents.

Describe the purpose of your project and how the expected outcomes will address a transportation problem, need, opportunity, or issue. (Maximum characters: 750)

Project cost table

Response instructions are on page 11 of the 2024 Application Packet.

TGM funds requested for the work identified in Criterion 3

Consultant
\$180,000.00

Local reimbursement

Total TGM funds requested
\$180,000.00

Local match

Minimum Match (Calculated)

\$20,601.81

Approximately 11.5% of requested funds

Match to be provided

Labor, supplies and services during project

\$21,000.00

Payment when Intergovernmental Agreement is signed

Total Match to be Provided

\$21,000.00

Award criteria

Criterion 1: Proposed project addresses a need and supports TGM objectives (up to 40 points)

The application demonstrates the proposed project clearly and effectively addresses a local or regional transportation or transportation-related land use issue, problem, need, or opportunity and will achieve one or more of the TGM Objectives.

Response instructions are on page 13 of the 2024 Application Packet.

What is the transportation or transportation-related land use issue, problem, need, or opportunity the proposed project will address?

The City's fundamental need is to provide multi-modal transportation connections through two main areas: the first, vacant residential lands with sloughs/wetlands; the second, vacant commercial and industrial business park lands with restricted access due to a railroad crossing. The current TSP is difficult to enforce in these areas because of the disconnect between the adopted plan and the existing development that is inconsistent with that adopted plan. The grant will involve extensive landowner outreach to build consensus around a TSP that is reflect of current land uses and therefore realistic to enforce.

Historical development and partitioning have not uniformly increased connectivity. In 2019, Staff drafted a Transportation Connection Analysis that identified "opportunity areas" that would benefit from additional connections. Here, providing multi-modal access opportunities could reduce congestion on major transportation facilities and improve safe and efficient movement.

The lack of internal connectivity coupled with the presence of wetland and water resources has left large areas vacant residential land essentially inaccessible. Because Island City has an abundance of vacant residential land within the existing UGB (roughly 60 acres within the City Limits alone), and the region has a need for housing, we have seen an up-tick in development interest, including recent proposals for multi-dwelling housing, duplexes, and ADUs.

Our commercial and industrial business park areas north of Island Ave. have limited access because of the railroad crossing and underdeveloped intersections with Island Ave., an ODOT facility. In 2009, the City received a TGM grant to complete the South Riverside Area Plan. This area plan laid out adequate transportation facilities to encourage orderly and economic development in this area. Unfortunately, in the years that followed Island City and La Grande allowed disjointed development within and interacting with this area that rendered the plan obsolete. These developments were facilitated by administrators who are no longer with the cities.

In both of these areas, the existing TSP does not reflect the current transportation framework, nor does it provide direction to resolve identified connectivity challenges. Further, when interested parties come to the City for partition and subdivision requests, they are frustrated by lack of clarity on infrastructure and access requirements. This TSP update will provide an opportunity to have detailed discussions with landowners and community members. We want our community to reach a consensus on what future development can and should look like, set clear expectations, and define a path for financing.

The grant will fund a comprehensive review, and provide an updated set of regulations that accurately reflects existing land use patterns, and plans/prioritizes/identifies funding for needed infrastructure.

Maximum characters: 3,000 | (Text box automatically expands. Click and drag right-hand corner of text box to manually expand it.)

What are the proposed Project Objectives? How will the Project Objectives achieve one or more of the TGM Objectives?

The City's buildable lands are largely inaccessible. Property owners and prospective buyers are constantly asking about development potential, but they are frustrated with complications around providing adequate access and planning for future developability on adjacent lands. Currently, there is not sufficient clarity and direction to resolve these issues. Detailed public involvement and guidance from a Residential Advisory Committee (RAC) will set development expectations by and for property owners, create a mutual understanding on growth, and increase public support.

Project Objectives:

- (1) Review current transportation plan and comprehensive plan goals and policies and update based on community input;
- (2) Identify and prioritize transportation connections reflective of the city as it is today, not as it was in 1999;
- (3) Codify feedback and preferences into both the city's development code and public works standards;
- (4) Ensure document compliance (TSP, public works standards, comprehensive plan, and development code) with Oregon state law;
- (5) Balance access needs and residential development with natural resource protections (Mulholland Slough, Crooked River, and Grande Ronde River); and
- (6) Identify funding opportunities and resources for the city to achieve and implement adopted policies and regulations.

Supports TGM Objectives:

- 1.1 A balanced, interconnected, and safe transportation system that provides a variety of transportation options and supports land uses.
- 1.3 Mobility choices for underserved communities and those with limited options.
- 3.1 Thriving existing neighborhoods and centers and well-planned new growth that accommodate existing and future residents, businesses, and services.
- 3.3 Housing with access to education, jobs, and services.
- 4.1 Urban growth accommodated within existing communities, thus minimizing, delaying, or providing an alternative to an urban growth boundary expansion.
- 5.1 Transportation systems and land use patterns that protect valuable natural resources, promote energy efficiency, and reduce emissions of air pollution and greenhouse gases.

A driving force behind this grant request is increased development interest. Employment land in the north is constrained by railroad crossings and Island Ave., (an ODOT facility). Vacant residential lands are constrained by sloughs/wetlands. Island City seeks to bridge connections in both areas to provide relief for local travel that is currently utilizing arterials and collectors, while evaluating other cross-connections in the city (1.1, 1.3, 4.1, and 5.1).

The City wants to make sure that road/trail/bikeway locations are appropriately placed, designed to meet the community's needs, and provide efficient connections between residential and employment areas (1.3, 3.1, 3.3 and 5.1). We will engage landowners to gauge development potential and craft policies and incentives to support efficient development (3.1, 4.1, and 5.1)

Maximum characters: 3,000 | (Text box automatically expands. Click and drag right-hand corner of text box to manually expand it.)

Criterion 2: Proposed project is timely and urgent (up to 25 points)

The application demonstrates timeliness and urgency. The project is needed now to:

- address pressing local transportation and land use issues
- make amendments to local plans or regulations necessitated by changes in local conditions or in federal regulations, state requirements, or regional plans
- build on, complement or take a necessary step toward completing or implementing other high priority community initiatives, including Governor's Regional Solutions Team priority
- resolve transportation or land use-related issues affecting the project readiness of local, regional or state transportation projects for which funding is expected to be obligated within the near future

Response instructions are on page 15 of the 2024 Application Packet.

Why is it important to do the proposed project in this grant cycle?

The City's fundamental need is to provide multi-modal transportation connections through the City. This has been extremely difficult because existing development is inconsistent with the current street plan in the TSP, and large landholders are unconvinced of the value of a planned transportation system. These tensions are especially problematic in our commercial and industrial business park areas north of Island Avenue.

Public access to commercial and industrial lands north of Island Ave. in Island City AND the City of La Grande is supplied only by the underdeveloped intersection of Walton Road and Island Ave. This intersection is also complicated by crossing the Idaho Northern & Pacific Railroad. The Railroad has firmly stated that it will close access to this intersection if unrestricted development continues (i.e., development without sufficient transportation improvements or without an additional access point across Island Ave.).

Most recently, the City of La Grande approved a zone change from medium residential to general commercial (an upzone) to support a conceptual 100-space RV Park in the City, but with no access through their City (see La Grande PAPA local file number 02-ZON-23). This conceptual park would have access from the already underdeveloped intersection of Walton Rd. and Island Ave. There have been additional piecemeal partitions and development approvals in this area that have all exacerbated transportation issues. But, the compounded development pressure has forced the Railroad's hand to potentially close access to this intersection out of safety concerns. If that occurs, multiple businesses, landowners, and employees will be impacted.

The current staff and City Council are working to salvage opportunities for access and connectivity and re-evaluate what is necessary to provide adequate rail crossing and intersection construction. It is vital that this analysis is conducted now and funding mechanisms are identified so that the Railroad does not close its crossing to the public, and cut off access to existing vacant and developed employment lands. The immediate development pressures on the intersection of Walton Rd. and Island Ave. coupled with safety concerns from the Railroad require a TSP update within this planning cycle.

Maximum characters: 2,500 | (Text box automatically expands. Click and drag right-hand corner of text box

to manually expand it.)

What local actions are needed to move the proposed project forward? Have these actions been taken and if so, when? If those efforts are underway, when will they be completed?

There are no outstanding land use actions that need to be completed to move the project forward. They City is ready and willing to start a contract immediately.

Maximum characters: 1000 | (Text box automatically expands. Click and drag right-hand corner of text box to manually expand it.)

How does the proposed project relate to other planning efforts, developments, or initiatives? Which of those are completed, underway, or waiting on the completion of this project?

In 2019, City Consultant Staff drafted a Transportation Connection Analysis that is similar to the state's TSP assessment program. This analysis identifies "opportunity areas" that would benefit from increased connectivity, and audits current transportation standards across adopted planning documents. This evaluation has set the direction for updating the TSP.

Maximum characters: 1000 | (Text box automatically expands. Click and drag right-hand corner of text box to manually expand it.)

Criterion 3: Proposed project approach supports policy decision (up to 20 points)

The application demonstrates a clear approach to achieving the expected outcome and includes consideration for adoption. Where substantial coordination with other local, regional, and state planning efforts will need to occur, the mechanisms and responsibilities for the coordination are clear.

Response instructions are on page 16 of the 2024 Application Packet.

Tasks and deliverables table

What are your proposed tasks and deliverables

Task 1 Project Management & Kickoff

1.1 Kickoff Meeting: Staff and consultant (Project Management Team PMT) discuss scope, deliverables, & timelines.

1.2 Invoice & Progress Reports: Bi-weekly status memo. Monthly status updates from Staff to Council.

1.3 Project Schedule: PMT to refine timeline for deliverable & subtask. Hard dates for submittal of consultant materials, staff review, and product revision.

1.4 PMT Virtual Meetings: Meetings as needed. Dates/times will be set and held during task 1.3.

1.5 Public Involvement Plan: Consultant will develop a public involvement approach based on staff input.

1.6 Advisory Committee (AC): Staff will build a diverse AC (backgrounds/interests/perspectives). The AC will include technical advisors and traditionally underrepresented community members. Staff will also compile contact information of interested parties to be informed & invited.

For each project task, describe the major deliverables and who is responsible for its preparation, decisions to be made, and expected timeline. Clearly identify which local plans or regulations the final document(s) will create, amend or update and which entity or entities will need to take action to adopt them.

Task 2 Project Framework

- 2.1 Tech Memo #1 Plans and Policy Framework: Consultant to produce with input from staff.
- 2.2 Tech Memo #2 Analysis Methodology and Assumptions: Consultant to produce with input from staff.
- 2.3 AC Meeting #1: Consultant to present information from memos 1 and 2. Consultant to guide AC to define project goals/objectives/evaluation criteria.
- 2.4 Tech Memo #3 Goals, Objectives, and Evaluation Criteria: Consultant to produce with input from staff. Provided to AC for comment.
- 2.5 Property Owner Outreach/Survey: Consultant to develop informative materials and questionnaire. AC, staff and consultant will reach out to key property owners. The interested parties list will also be consulted for input. An online survey will be created and promoted by the City.

For each project task, describe the major deliverables and who is responsible for its preparation, decisions to be made, and expected timeline. Clearly identify which local plans or regulations the final document(s) will create, amend or update and which entity or entities will need to take action to adopt them.

Task 3 Transportation System Conditions, Deficiencies, and Needs

- 3.1 Tech Memo #4 Existing Conditions Inventory and Future Conditions Analysis: Consultant to produce with input from staff.
- 3.2 AC Meeting #2: Consultant to present information from memo 3 to AC and guide AC to elicit input on future conditions and priorities.

For each project task, describe the major deliverables and who is responsible for its preparation, decisions to be made, and expected timeline. Clearly identify which local plans or regulations the final document(s) will create, amend or update and which entity or entities will need to take action to adopt them.

Task 4 Transportation System Improvements

- 4.1 Interviews: Identify key properties where transportation connections would be most beneficial. Consultant/staff to interview key property owners.
- 4.2 DRAFT Tech Memo #5 Transportation System Improvements: Consultant to incorporate memo 4 with interviews and direction from AC/staff. Memo will identify and prioritize improvements.
- 4.3 DRAFT Tech Memo #6 Costs and Potential Funding Strategies. Consultant to produce with input from staff.
- 4.4 AC Meeting #3: Consultant to present memos 5 and 6 to AC. Incorporate AC input.
- 4.5 City Council Work Session #1: Consultant to present to City Council for input.
- 4.6 Open House: Consultant to present information to public for input.
- 4.7 Tech Memo # 7 Solutions & Implementation: Consultant to prepare based on all feedback.
- 4.8 Tech Memo # 8 Public Outreach Summary Report: Consultant to prepare.

For each project task, describe the major deliverables and who is responsible for its preparation, decisions to be made, and expected timeline. Clearly identify which local plans or regulations the final document(s) will create, amend or update and which entity or entities will need to take action to adopt them.

Task 5 Plan Adoption & Code Amendments

- 5.1 Draft Updated Island City TSP: Consultant to prepare based on previous memos and input.
- 5.2 Draft Comp Plan Amendment Package: Consultant to prepare based on previous memos and input.
- 5.3 Draft Island City Development Code Amendment Package (includes Public Works Standards): Consultant to prepare based on previous memos and input.
- 5.4 City Council Work Session #2: Consultant to present adoption drafts
- 5.5 Final Updated Island City TSP: Consultant to prepare based on City Council input.
- 5.6 Final Comp Plan Amendment Package: Consultant to prepare based on City Council input.
- 5.7 Final Island City Development Code Amendment Package (includes Public Works Standards): Consultant to prepare based on City Council input.
- 5.8 City Council Hearing(s): Council to adopt final amendment package.

For each project task, describe the major deliverables and who is responsible for its preparation, decisions to be made, and expected timeline. Clearly identify which local plans or regulations the final document(s) will create, amend or update and which entity or entities will need to take action to adopt them.

How will the project approach support investment decisions for Safe Systems, Climate Action, and Equitable Outcomes?

The City’s fundamental need for this grant is to provide multi-modal transportation connections throughout the city. This is achieved through an up-to-date TSP that is reflective of community member’s current needs and sensitive to the City’s existing land use patterns. The outcome of this grant will balance traditionally unrecognized voices with those of large landowners/developers – among other prominent actors – to ensure an efficient and safe multi-modal plan for a transportation network that serves buildable vacant lands within the City’s core. An updated TSP will bring Island City’s development projection back on-track with the goals of the Oregon Transportation Plan and TPR.

Maximum characters: 1000 | (Text box automatically expands. Click and drag right-hand corner of text box to manually expand it.)

If adoption hearings will be held as part of a larger project, when will that be and as part of what project? (optional)

Maximum characters: 500 | (Text box automatically expands. Click and drag right-hand corner of text box to manually expand it.)

Criterion 4: Proposed project has community support (up to 5 points)

The application demonstrates that there is local support for project objectives, a commitment to participate, and a desire to implement the expected outcome.

Response instructions are on page 17 of the 2024 Application Packet.

Upload letters of support here

IC TGEM LOS_Union County.pdf

IC TGM LOS_RR.pdf

IC TSP Support Letter 050224.pdf

PDFs only. Max 2 mb per file.

Criterion 5: Proposed project sponsor is ready and capable (up to 10 points)

The application demonstrates that the local government is ready and able to begin the project within the TGM timetable and that there is local commitment and capability to manage and complete the project. The application demonstrates, if applicable, successful performance on previous TGM projects.

Response instructions are on page 18 of the 2024 Application Packet.

Describe the experience and availability of key staff

The current 1999 TSP was funded through the TGM program. A subsequent area plan was also funded through the program in 2009. Both projects resulted in adopted plans within the required timeframes. Island City is committed to supporting the project and has dedicated staff time and resources toward its completion and implementation.

The project manager will be Jaime Crawford, the City’s Contract Planner. Jaime has worked for Island City for the last 6 years and is intimately aware of code conflicts/inefficiencies. She prepared an evaluation similar to the state’s TSP assessment program. This evaluation set the discussion for updating our TSP. Jaime has worked with DLCDC, Union County, ODOT, DSL, DEQ, the Idaho Northern & Pacific Railroad, and the City of La Grande on a range of development proposals in Island City. Jaime works with multiple jurisdictions and is currently helping to manage two Technical Assistance grants for code and policy updates for housing – in the City of Moro and in the City of Arlington. And, in 2022 she helped lead the City of Ontario’s Housing Needs Analysis update. This breadth of experience will ensure that products will (1) be reflective of the true needs of the City and (2) be adoption ready.

Karen Howton, Island City’s City Recorder, works in-person at the City and will provide support on-the-ground fielding the public’s questions and helping to facilitate PMT, AC, and public meetings in partnership with Jaime and the selected consultant. Karen has been with Island City since 2013 and manages multiple city services and contracts. Before working with the city, Karen managed two grants for two non-profits – Soroptimist International and Mi Casa.

Maximum characters: 1500 | (Text box automatically expands. Click and drag right-hand corner of text box to manually expand it.)

Explain how the applicant has the capacity to scope the proposed project during the next 15 months and manage it to completion within 3 years

Both Karen and Jaime have experience working on other grant projects. We understand that a key component to a successful project – and one that stays on-track with projected timelines – is staff oversight and engagement. Jaime Crawford works as an on-call staff consultant for the City. Unlike other public planners, she can solely dedicate time towards specific long-range projects without being pulled away by current planning applications or other City duties. This unique position will allow her to prioritize grant management among her other on-call duties. Further, the City does not anticipate applying for or engaging in any other long-range planning work that would consume our capacities.

Maximum characters: 1500 | (Text box automatically expands. Click and drag right-hand corner of text box to manually expand it.)

If applicable, list applicant’s TGM projects within last 10 years and their status

If applicable, list local jurisdiction’s TGM projects within last 10 years and their status

TGM File Code	Project Title	Status
<input type="text"/>	<input type="text"/>	<input type="text"/>

300 character limit.

Bonus points: Housing (up to 10 points)

Response instructions are on page 19 of the 2024 Application Packet.

How will the adoption of the final document(s) address barriers to a broad range of housing types and affordability or work to link the location of future workforce housing to walkable/bikeable areas with good transit?

There are ~60 acres of vacant residential land in the center of Island City – in between commercial development along a collector, an older neighborhood, piecemeal rural residential development along a second collector, and newer residential development. This land is crossed with sloughs/wetlands, but it is still developable if a sensitive approach to access is agreed upon. The proposed TSP update will identify feasible connections, providing regulatory certainty for infill. And a potential trail system along the sloughs/a wetland park would benefit new a current residents.

Maximum characters: 500 | (Text box automatically expands. Click and drag right-hand corner of text box to manually expand it.)

Required forms

Title VI: Racial & Ethnic Impact Statement form
Racial-Ethnic-Impact-Statement.pdf

[Download the Racial & Ethnic Impact Statement form here](#)

PDFs only. Max 2 mb per file.

Certifications

Response instructions are on page 20 of the 2024 Application Packet.

Eligibility criteria

- This application demonstrates a clear transportation relationship
- This application demonstrates adoption of products to meet project objectives
- This application demonstrates the support of local officials

Preparation of application

- This application was prepared by staff of the primary applicant or staff of one of the involved jurisdictions
- This application was prepared by the following COMPENSATED consultant (indicate below)
- This application was prepared by the following UNCOMPENSATED consultant (indicate below)

Name of consultant who prepared this application

Jaime	Crawford
First	Last

Would you like to receive TGM news and updates?

Yes No I am already subscribed

Clicking "Yes" authorizes us to add your email to our e-newsletter mailing list. You can unsubscribe at any time.

Today's date

If you encounter any issues with the submittal process, please contact:

Rachael Levasseur
Planning Section Web Coordinator
Rachael.LEVASSEUR@odot.oregon.gov

RESOLUTION NO. 236-2024

A RESOLUTION OF THE CITY OF ISLAND CITY APPROVING AND SUPPORTING THE CITY'S APPLICATION FOR A 2024 TRANSPORTATION AND GROWTH MANAGEMENT GRANT FROM THE OREGON DEPARTMENT OF TRANSPORTATION AND THE OREGON DEPARTMENT OF LAND CONSERVATION AND DEVELOPMENT TO UPDATE THE CITY'S TRANSPORTATION SYSTEM PLAN.

WHEREAS: the City Council of the City of Island City has authorized City Staff to prepare an application for the 2024 Transportation Growth Management (TGM) grant from the Oregon Department of Transportation to update the City's Transportation System Plan (TSP); and

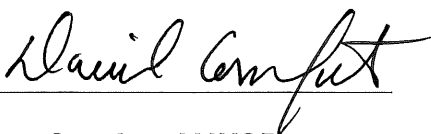
WHEREAS: The TGM Grant will allow the City of Island City to amend the current 1999 TSP to more accurately reflect the City's existing and future transportation system capacity; to identify and prioritize projects that more closely reflect the goals and needs of the community; and to establish project costs and identify current funding mechanisms that are more reflective of transportation improvements in 2024; and

WHEREAS: it is the desire of Island City's City Council to ensure future development certainty for property owners and incorporate Island City residents' input into the policies and priorities of the updated TSP; and

WHEREAS: the City of Island City has the capacity to meet the required twelve (12%) project match through the use of in-kind staff resources;

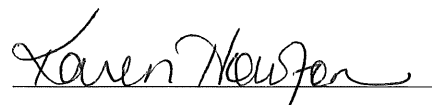
NOW, THEREFORE, BE IT RESOLVED BY THE CITY COUNCIL OF THE CITY OF ISLAND CITY THAT THE CITY COUNCIL DOES HEREBY APPROVE AND SUPPORT THE APPLICATION FOR A 2024 TRANSPORTATION AND GROWTH MANAGEMENT GRANT FROM THE OREGON DEPARTMENT OF TRANSPORTATION AND THE OREGON DEPARTMENT OF LAND CONSERVATION AND DEVELOPMENT TO UPDATE THE CITY'S TRANSPORTATION SYSTEM PLAN.

Passed by the City Council of the City of Island City, County of Union, State of Oregon, this 8th day of July, 2024.



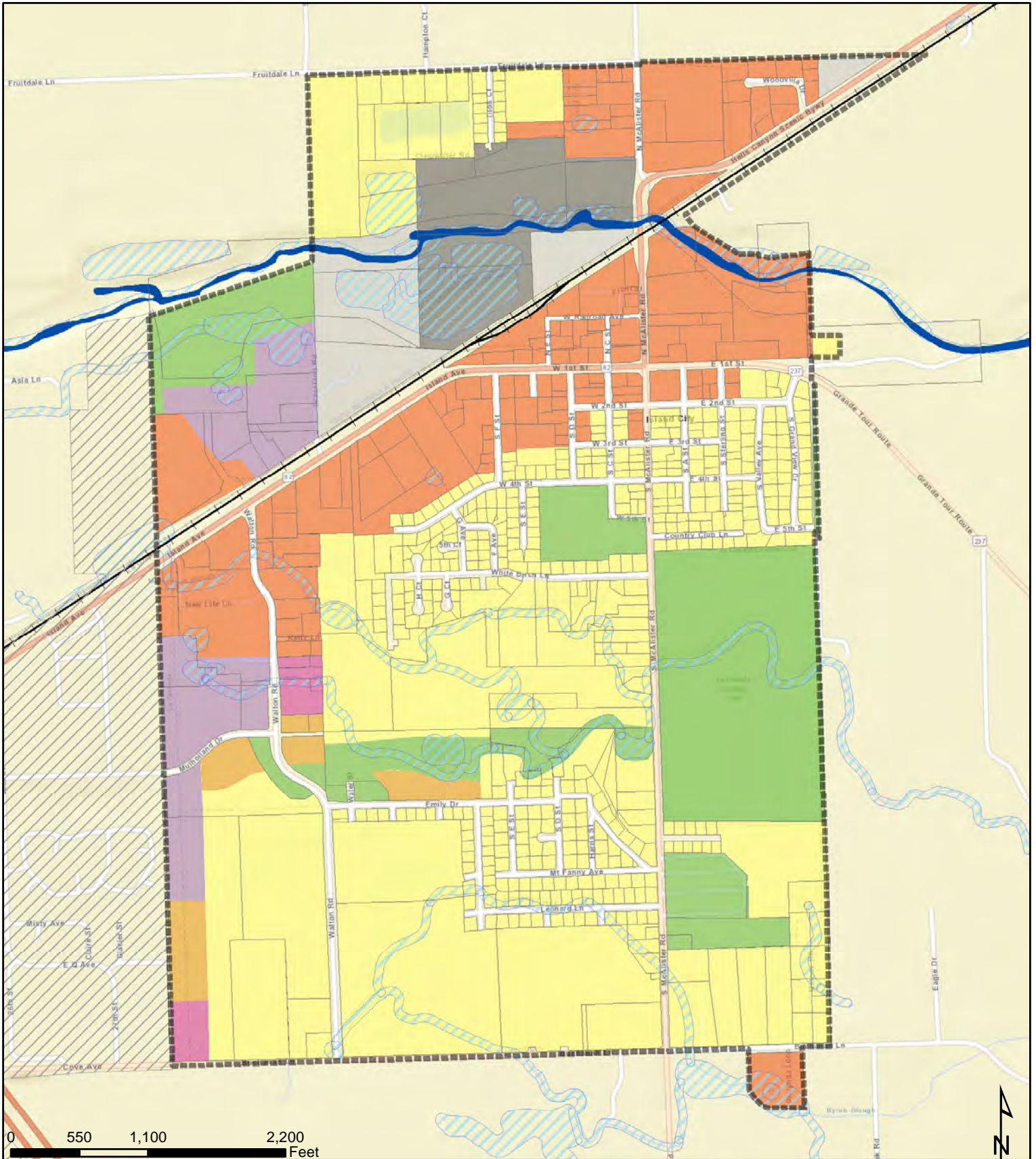
Dave Comfort, MAYOR

Attest:



Karen Howton, CITY RECORDER

Comprehensive Plan Designations (2019)



- | | | |
|--------------------------|---------------------------------------|----------------------------------|
| Island City UGB (2018) | Comprehensive Plan Designation | Medium Density Residential (MDR) |
| La Grande UGB (2018) | Business Park (BP) | Neighborhood Commercial (NC) |
| Railroad | Commercial (C-1) | Public / Greenway (P) |
| Grande Ronde River | Industrial (I) | Surface Mining (SM) |
| Riparian Setback Overlay | Low Density Residential (LDR) | |



UNION COUNTY Planning Department

Scott Hartell, Planning Director

1001 4th Street, Suite C

La Grande, OR 97850

PHONE (541)963-1014

FAX (541)963-1039

June 3, 2024

Cheryl Jarvis-Smith, TGM Grant Manager
ODOT Region 5
3012 Island Avenue
La Grande, OR 97850
541.963.1574

Dear Ms. Jarvis-Smith,

Union County is writing to provide our support for Island City's TGM grant request. Because of past development decisions, Island City's current transportation system is inconsistent with their 1999 TSP. We support the City's proposal to update this TSP to (1) provide certainty for property owners and neighbors for the location and funding of future roads, and (2) improve the viability of and safer access to commercial areas, as well as employment areas north of Island Avenue.

Island City is proposing a robust outreach program that will strive to reach all community members, City of La Grande and Union County. We hope this level of community input will create more awareness for the need for roads/trails/bicycle infrastructure planning, while allowing the community to prioritize projects and plan their future routes, sensitive to existing and planned land uses.

This TGM grant will allow the City to capture future transportation funding opportunities, thereby providing more opportunity for business development in Island City, and therefore the County.

With increased development inquiries in recent years, please consider the urgency of their request.

Best,

Scott Hartell
Planning Director



June 5, 2024

RE: Island City's Grant Application

Dear Oregon Department of Transportation,

I am writing to express my support for the Island City's Transportation Growth Management grant application.

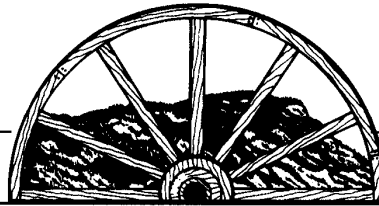
Island City seeks to update their Transportation System Plan (TSP). The current plan is outdated, having last been updated in 1999. Further, Island City has seen systemwide changes to their transportation needs over the last two decades.

As the General Manager of the Idaho Northern & Pacific Railroad (INPR) supporting the freight transportation needs of the region, I welcome this opportunity for Island City to update their TSP. Island City will work with the residents and community stakeholders to develop a plan that supports the local rural economy, enable transportation sector growth, and improve the infrastructures' capacity and reliability—this project is truly worthy of investment. With these great benefits in mind, I fully support Island City as they seek external funding to support updating their TSP.

Sincerely,

Jeff Short
General Manager
208-365-6353
jshort@rgpc.com

CITY OF



LA GRANDE

THE HUB OF NORTHEASTERN OREGON

COMMUNITY DEVELOPMENT DEPARTMENT / PLANNING DIVISION • P.O. Box 670 • 1000 Adams Avenue • La Grande, OR 97850
Phone: (541) 962-1307 • Fax: (541) 963-3333 • Web: www.planning.cityoflagrande.org

May 2, 2024

Karen Howton, City of Island City
10605 Island Avenue
Island City, OR 97851

RE: **SUPPORT LETTER FOR ISLAND CITY TGM GRANT APPLICATION**

To whom it may concern,

The City of La Grande Community Development Department is thankful for this opportunity to provide support for the City of Island City in updating their Transportation System Plan (TSP). The City of La Grande and the City of Island City lie immediately adjacent to each other, sharing common jurisdictional boundaries, and both are impacted by each other's short and long-range land use and transportation decisions.

Please accept this letter of support for the City of Island City's Transportation Growth Management (TGM) grant application and we look forward to being an active and engaged partner in this TSP update project. Long-range planning elements we would hope to see considered include:

- Bicycle and Pedestrian elements that improve public safety and connect residential areas to Island City Elementary School and other public areas (e.g. future open space at Island City Ponds, North end of Walton Road)
- Expand public transportation opportunities via Northeast Oregon Transit.
- Plan for a through road and improve interconnectivity in the area North of the Idaho Pacific Railroad (Island City Pond area), between Riddle Road and N. E Street in Island City. Such through connection would provide alternative emergency service routes to/from the area in the event of a catastrophic event or accident involving the Idaho Pacific Railroad, and would also improve safety and access to businesses and the public.

Again, thank you for this opportunity to support the City of Island City's effort to update their TSP and we look forward to being a partner in this project.

Sincerely,

A handwritten signature in blue ink, appearing to read 'Michael J. Boquist'. The signature is fluid and cursive, with the first name being the most prominent.

Michael J. Boquist
Community Development Director

MJB/mjb

RACIAL AND ETHNIC IMPACT STATEMENT

This form is used for informational purposes only and must be included with the grant application.

[Chapter 600 of the 2013 Oregon Laws](#) require applicants to include with each grant application a racial and ethnic impact statement. The statement provides information as to the disproportionate or unique impact the proposed policies or programs may have on minority persons¹ in the State of Oregon if the grant is awarded to a corporation or other legal entity other than natural persons.

1. The proposed grant project policies or programs could have a disproportionate or unique positive impact on the following minority persons:

Indicate all that apply:

Women	Asians or Pacific Islanders
Persons with Disabilities	American Indians
African-Americans	Alaskan Natives
Hispanics	

2. The proposed grant project policies or programs could have a disproportionate or unique negative impact on the following minority persons:

Indicate all that apply:

Women	Asians or Pacific Islanders
Persons with Disabilities	American Indians
African-Americans	Alaskan Natives
Hispanics	

3. The proposed grant project policies or programs will have no disproportionate or unique impact on minority persons.

If you checked numbers 1 or 2 above, please provide below the rationale for the existence of policies or programs having a disproportionate or unique impact on minority persons in this state. Further provide evidence of consultation with representative(s) of the affected minority persons.

By checking this box, I hereby certify the information contained on this form is true, complete, and accurate to the best of my knowledge.

Dated:

Printed Name:

Title:

Agency Name:

¹ “Minority person” are defined in SB 463 (2013 Regular Session) as women, persons with disabilities (as defined in ORS 174.107), African Americans, Hispanics, Asians, or Pacific Islanders, American Indians and Alaskan Natives.