

Oregon Department of ENERGY

Notice of Intent
Informational Meeting –
Echo Solar Project

Via WebEx/Teleconference

July 27, 2022
5:30 PM

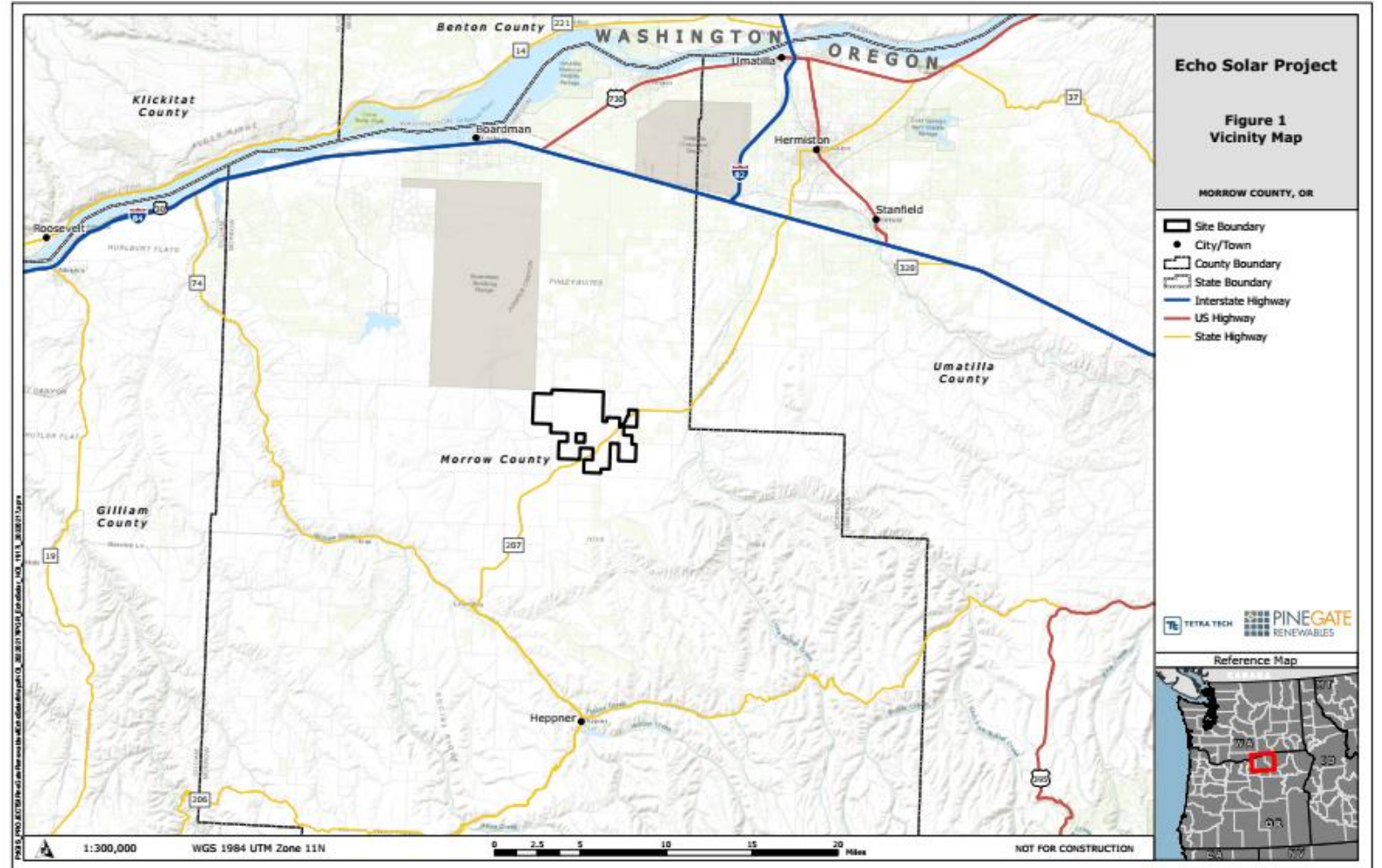


AGENDA

- **Welcome and Introductions**
- **Energy Facility Siting Process Overview**
- **Proposed Facility Overview**
- **Q & A Session**

Echo Solar Project

- Proposed 1.25 GW solar photovoltaic power generation facility with up to 7.5 GWh of distributed battery storage
- Proposed site consists of 10,900 acres (17 square miles) of predominantly cultivated EFU land in Morrow County.
- Applicant is Echo Solar, LLC, a wholly owned subsidiary of Pine Gate Renewables, LLC.



Oregon's Energy Facility Siting Program

- Before a person can construct or operate an energy facility in Oregon, it must obtain a site certificate from the Energy Facility Siting Council (EFSC).
- EFSC adopts standards to ensure that the siting, construction and operation of energy facilities is consistent with protection of the public health and safety and complies with Oregon's energy, land use, and environmental protection policies.
- The Siting Division of the Oregon Department of Energy (ODOE) serves as staff to EFSC and facilitates review of applications for site certificate, including opportunities for public participation and agency consultation.

Requirements for Site Certificate

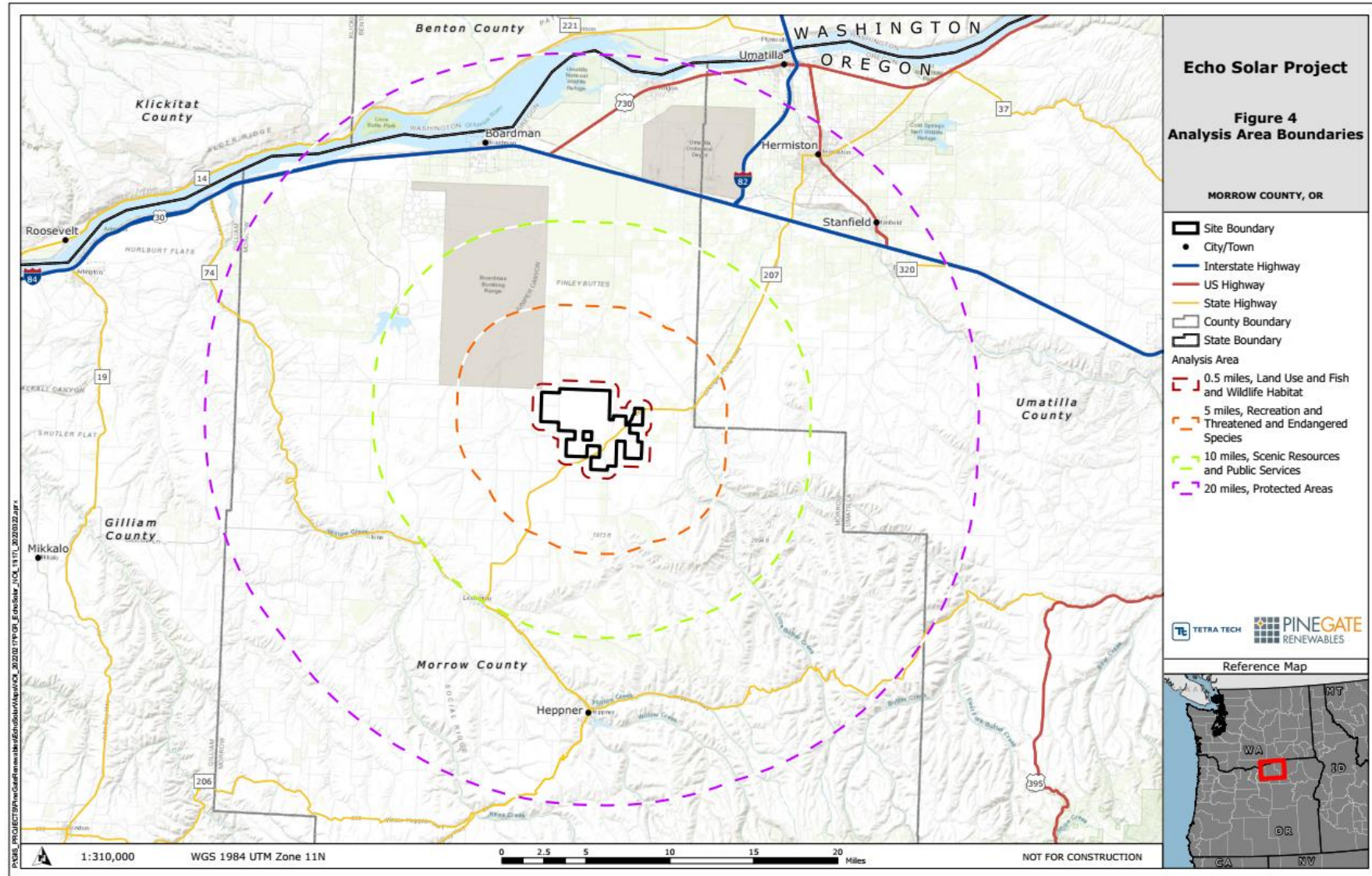
In order to issue a site certificate, EFSC must determine that:

- The facility complies with all applicable Council standards or the overall public benefits of the facility outweigh any adverse effects on a resource or interest protected by the standards the facility does not meet.
- The facility complies with all other Oregon laws and rules identified in the project order, as amended, as applicable to the issuance of a site certificate for the proposed facility.
- The facility complies with the statewide land use planning goals.

Energy Facility Siting Standards

- Organizational Expertise
- Structural
- Soil Protection
- Land Use
- Protected Areas
- Retirement and Financial Assurance
- Fish and Wildlife Habitat
- Threatened and Endangered Species
- Scenic Resources
- Historic, Cultural and Archaeological Resources
- Recreation
- Public Services
- Waste Minimization
- Wildfire Prevention

Study Areas

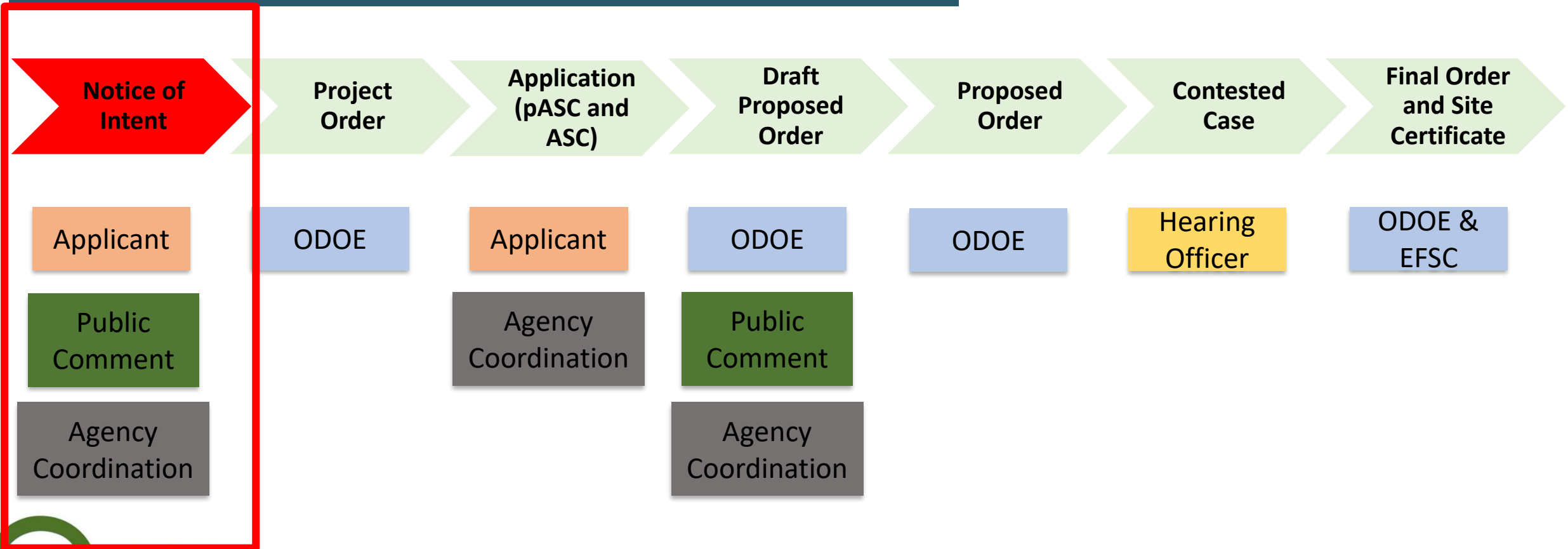


Land Use

- Applicant seeks a Council land use determination under ORS 469.504(1)(b)
- Morrow County Board of Commissioners has been appointed as the Special Advisory Group
- Facility will be evaluated against:
 - Local applicable substantive criteria determined by the Special Advisory Group
 - Any directly applicable state statutes and administrative rules adopted by Land Conservation and Development Commission
- Facility will require an exception to Statewide Planning Goal 3

Energy Facility Siting Process

Application for Site Certificate process



Reviewing Agency Coordination

- **Reviewing Agencies and Special Advisory Groups:**
 - Provide comments on the proposed facility within the jurisdiction or expertise of the agency
 - Make recommendations regarding the size and location of analysis area(s)
 - Identify:
 - Studies that should be conducted to identify potential impacts
 - Statutes, administrative rules, applicable substantive criteria, and local government ordinances administered by the agency
 - Permits administered by the agency that might apply to construction or operation of the proposed facility

Public Comments

- Opportunity for the public to comment on the Notice of Intent is Open. All written comments submitted to ODOE are on-the-record and provided to the applicant.
- Comment period closes on Friday, August 5, 2022.
- Oral Comments may be provided during the Q&A Session at this meeting.
- This meeting is not a public hearing, and participation is not required to establish standing to participate in the contested case during the review of the ASC.

ODOE Contact

Christopher M. Clark, Senior Siting Analyst
Oregon Department of Energy
550 Capitol St. NE
Salem, OR 97301
503-871-7254
christopher.clark@energy.oregon.gov

Helpful Resources

Oregon Department of Energy / Energy Facilities & Safety / Facilities

Energy Facility Siting



COUNCIL INFORMATION

- About the Council
- Council Jurisdiction
- Council Meetings
- Council Rulemaking
- Compliance Program



ENERGY FACILITIES


- Public Guide**
- Siting Project Updates
- Facilities Under EFSC
- EFSC Facilities Map
- Federal Facilities in Oregon
- About the Siting Process**
- Siting Standards
- Siting Statutes & Rules
- Fact Sheets



FACILITIES UNDER REVIEW

- Archway Solar Energy Facility
- Blue Marmot Solar Energy Facility
- Boardman to Hemingway Transmission Line
- Bonanza Energy Facility
- Eugene to Medford Transmission Line
- Golden Hills Wind Project
- Madras Solar Energy Facility
- Nolin Hills Wind Power Project

<https://www.oregon.gov/energy/facilities-safety/facilities/Pages/default.aspx>



A PUBLIC GUIDE TO ENERGY FACILITY SITING IN OREGON

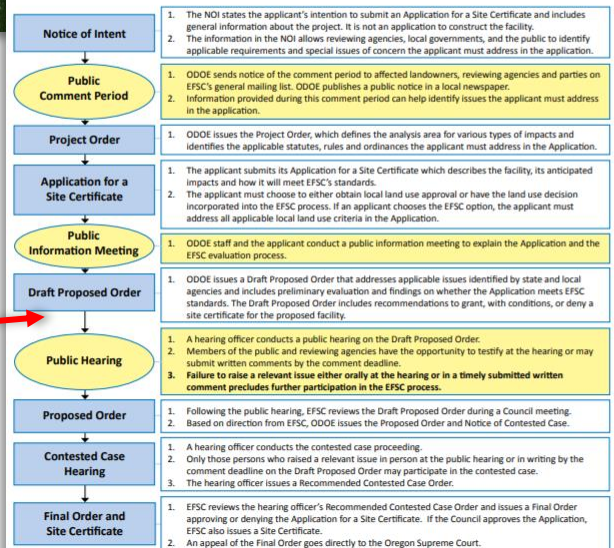
From the **OREGON DEPARTMENT OF ENERGY**

Updated July 2020

SITING OF ENERGY FACILITIES IN OREGON

EFSC Process Flowchart

The Oregon Department of Energy administers the Energy Facility Siting Council facility siting process, which consolidates state agency and local government regulations into a single review process. State agencies and local governments participate throughout the process. The three yellow stages indicate where public participation is encouraged.



- Notice of Intent**
 - The NOI states the applicant's intention to submit an Application for a Site Certificate and includes general information about the project. It is not an application to construct the facility.
 - The information in the NOI allows reviewing agencies, local governments, and the public to identify applicable requirements and special issues of concern the applicant must address in the application.
- Public Comment Period**
 - ODOE sends notice of the comment period to affected landowners, reviewing agencies and parties on EFSC's general mailing list. ODOE publishes a public notice in a local newspaper.
 - Information provided during this comment period can help identify issues the applicant must address in the application.
- Project Order**
 - ODOE issues the Project Order, which defines the analysis area for various types of impacts and identifies the applicable statutes, rules and ordinances the applicant must address in the Application.
- Application for a Site Certificate**
 - The applicant submits its Application for a Site Certificate which describes the facility, its anticipated impacts and how it will meet EFSC's standards.
 - The applicant must choose to either obtain local land use approval or have the land use decision incorporated into the EFSC process. If an applicant chooses the EFSC option, the applicant must address all applicable local land use criteria in the Application.
- Public Information Meeting**
 - ODOE staff and the applicant conduct a public information meeting to explain the Application and the EFSC evaluation process.
- Draft Proposed Order**
 - ODOE issues a Draft Proposed Order that addresses applicable issues identified by state and local agencies and includes preliminary evaluation and findings on whether the Application meets EFSC standards. The Draft Proposed Order includes recommendations to grant, with conditions, or deny a site certificate for the proposed facility.
- Public Hearing**
 - A hearing officer conducts a public hearing on the Draft Proposed Order.
 - Members of the public and reviewing agencies have the opportunity to testify at the hearing or may submit written comments by the comment deadline.
 - Failure to raise a relevant issue either orally at the hearing or in a timely submitted written comment precludes further participation in the EFSC process.
- Proposed Order**
 - Following the public hearing, EFSC reviews the Draft Proposed Order during a Council meeting. Based on direction from EFSC, ODOE issues the Proposed Order and Notice of Contested Case.
- Contested Case Hearing**
 - A hearing officer conducts the contested case proceeding.
 - Only those persons who raised a relevant issue in person at the public hearing or in writing by the comment deadline on the Draft Proposed Order may participate in the contested case.
 - The hearing officer issues a Recommended Contested Case Order.
- Final Order and Site Certificate**
 - EFSC reviews the hearing officer's Recommended Contested Case Order and issues a Final Order approving or denying the Application for a Site Certificate. If the Council approves the Application, EFSC also issues a Site Certificate.
 - An appeal of the Final Order goes directly to the Oregon Supreme Court.

OREGON Oregon Department of Energy • 550 Capitol St., NE • Salem, OR 97301 Page 1 of 1

Echo Solar

EFSC Public Information Meeting

July 2022



Agenda

- Introductions
- Energy Facility Siting Council Permitting
- Energy Grid Interconnection
- Construction Timeline
- Energy Off-take & Community Benefits

Pine Gate Renewables

- Pine Gate Renewables (PGR) is a leader in the solar industry and an innovator in the movement for clean energy solutions. We specialize in developing and financing utility-scale solar farms, creating value throughout the project lifecycle. Through our strategic partnership with Blue Ridge Power, we fulfill all our project's engineering, procurement, and construction (EPC) needs to get our projects up and running.
- Pine Gate operates 100 solar projects in 20 states, accounting for more than 1GW of energy and have more than 15.5GW in active development.
- Pine Gate has developed 17 projects in Oregon, adding up to almost 90 MW (DC) of generation to the states' grid.



Collier Solar
Bend, OR



PINE GATE
RENEWABLES

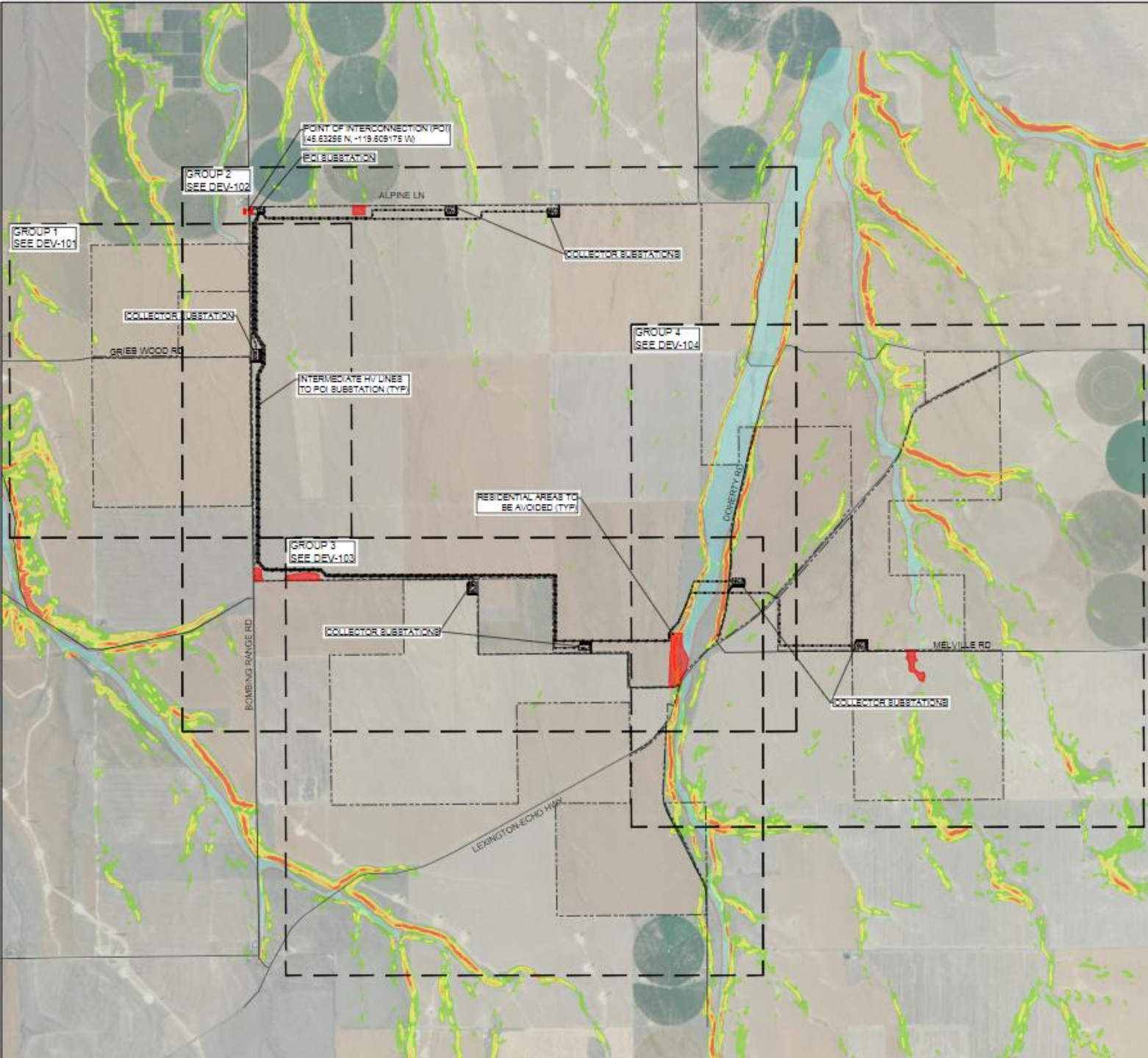


Sheep Solar
Turner, OR

Gallatin Power Partners



- Gallatin Power Partners is a renewable energy development firm focused on building local partnerships to develop sustainable energy projects that benefit the local community, landowners, and the environment. The Gallatin Power Team brings extensive solar, wind, and battery experience having developed over 13 GW of projects spanning from California to Massachusetts.



Echo Solar
10,900 acres
1,250MW AC

Echo Solar Project

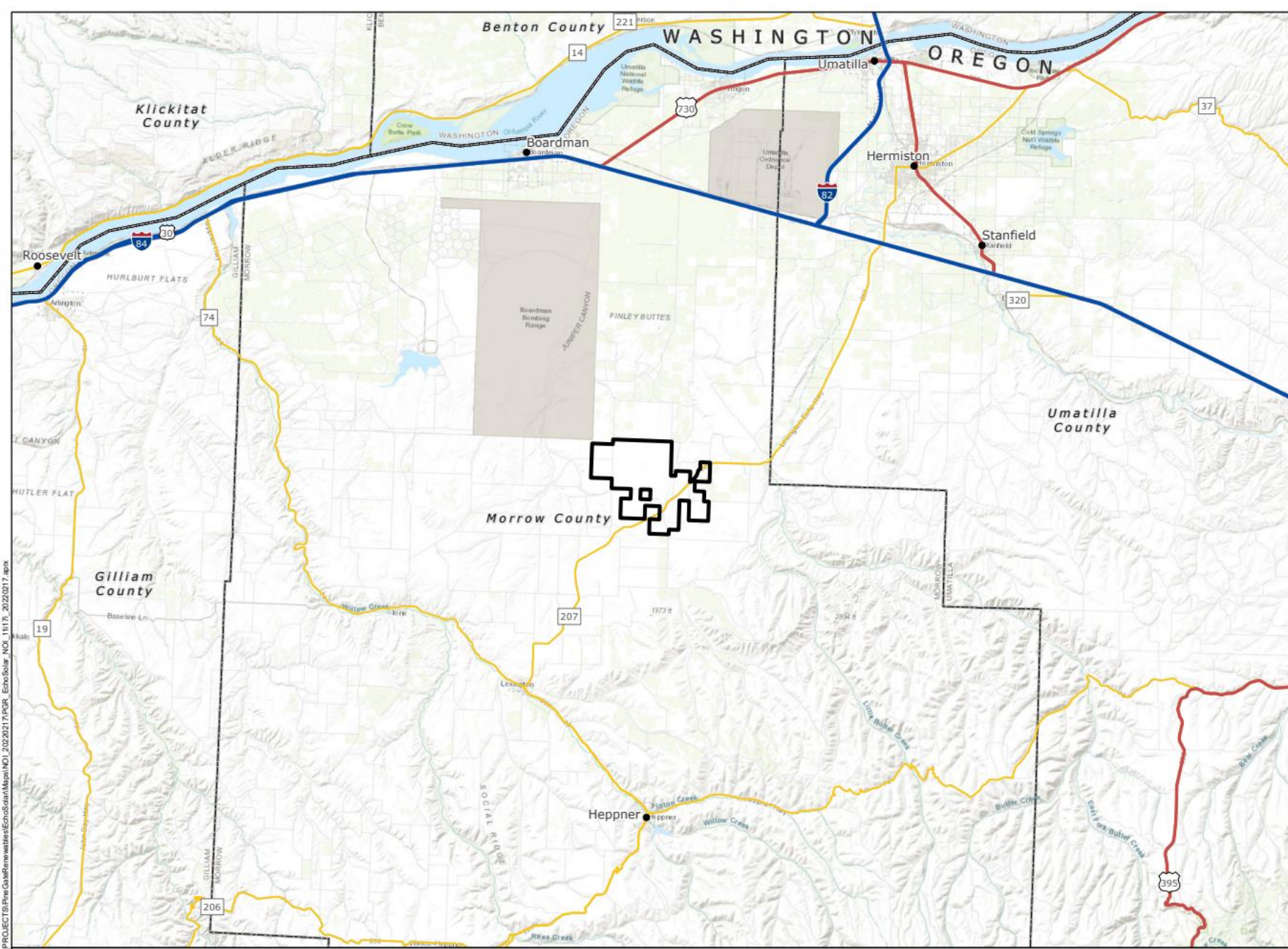
Figure 1 Vicinity Map

MORROW COUNTY, OR

- Site Boundary
- City/Town
- County Boundary
- State Boundary
- Interstate Highway
- US Highway
- State Highway



Reference Map



P:\GIS\PROJECTS\PineGateRenewables\EchoSolar\Mapa\NOI_1117_20220217.aprx

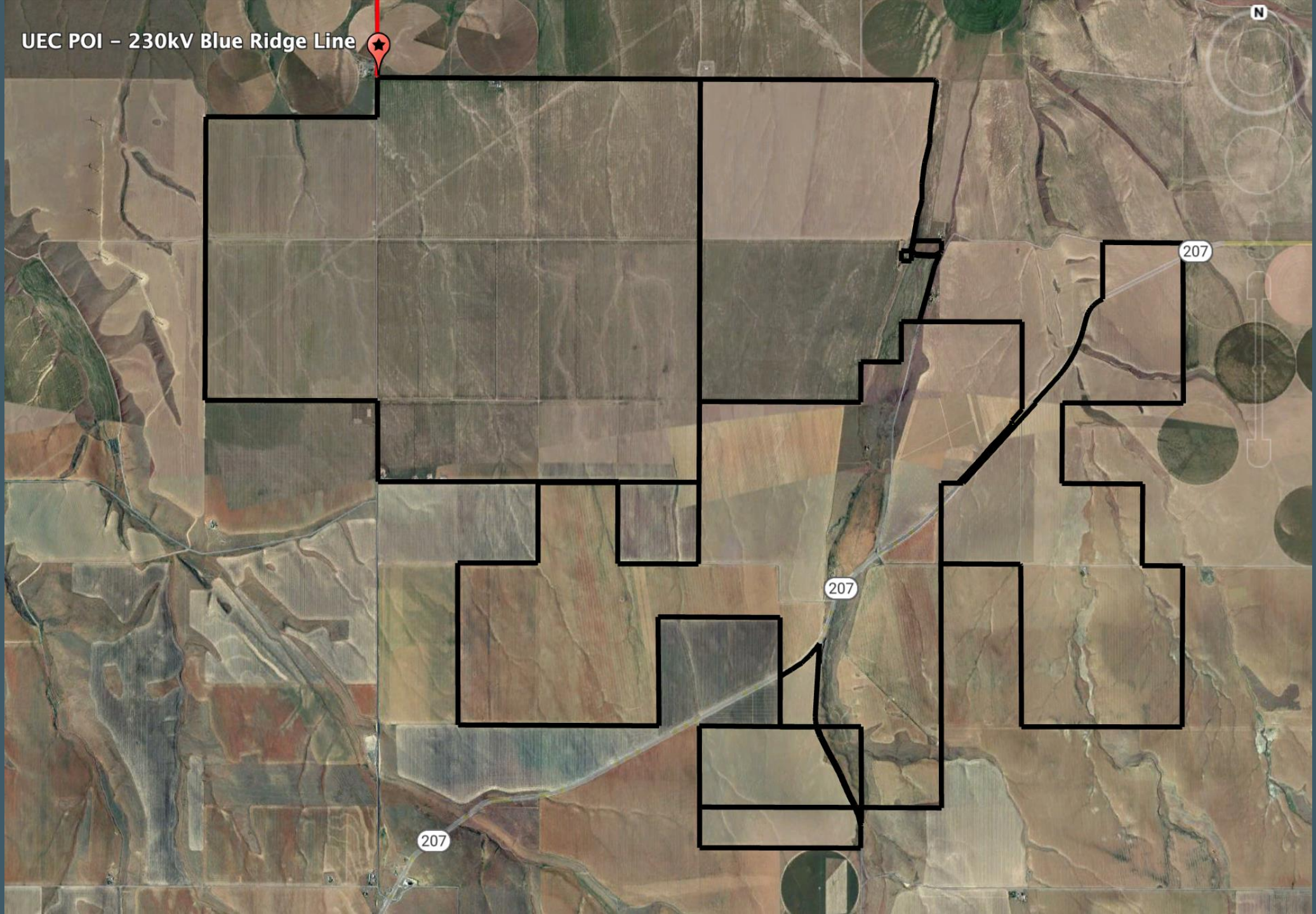


1:300,000 WGS 1984 UTM Zone 11N

0 2.5 5 10 15 20 Miles

NOT FOR CONSTRUCTION

UEC POI - 230kV Blue Ridge Line



207

207

207

N

Energy Facility Siting Council (EFSC) Permitting

- Notice of Intent submitted to Oregon Department Of Energy May 5, 2022.
- First Public Information Meeting July 27th, 2022.
- Application for site certificate to be submitted in Q1 2023.
- Wetland Delineation, Habitat Survey, Threatened and Endangered Plant Survey, Ambient Noise Monitoring, Scenic Resources and Washington Ground Squirrel surveys are all complete.
- Natural and Cultural Resource survey is underway and expected to be complete in September 2022.
- The majority of the project is currently cultivated with dryland wheat.

Energy Grid Interconnection

- Echo Solar is being studied for interconnection with both the Umatilla Electric Cooperative (UEC) and Bonneville Power Administration (BPA).
- The Facility will connect with the UEC system at the existing 230kV Blue Ridge Transmission Line near the intersection of Bombing Range Road and Alpine Lane on the north side of the Facility Site Boundary. If energy from the project flows from UEC to the BPA system, it will interconnect with BPA's grid at the planned Longhorn Substation.
- Our project is unaffiliated with the proposed Boardman to Hemmingway transmission line (B2H) and has no current plans to connect with B2H.

Construction Timeline

- Estimated Construction Start Q4 2024.
- Estimated Construction completion date in Q2 2027.
- An average of approximately 400 employees will be present on-site during construction, with an anticipated on-site peak of up to 1,200 employees on-site at one time.

Energy Off-take & Community Benefits

- Oregon's and the Northwest's energy needs are growing and seeking clean energy sources. Echo Solar has the potential to serve a range of energy consumers from utility customers in the Pacific Northwest to large corporate consumers to regional energy exports.
- Echo Solar will produce clean, abundant energy which can help attract and retain additional high-tech industries to the area, from data centers to green hydrogen production to high-tech manufacturing, we believe our project will contribute to Morrow County's growing economy.
- Solar energy creates additional good-paying, permanent jobs, and can help diversify rural economies, without dramatically altering a community's character.

Contact Information

Joe Torkelson

Development Project Manager
Pine Gate Renewables

321-652-1835

jtorkelson@pgrenewables.com

Jeff L. Fox

VP, Land & Community Affairs
Gallatin Power Partners

406-599-2916

jeff@gallatinpower.com

Q&A and Comments

How to Raise Your Hand in Webex:

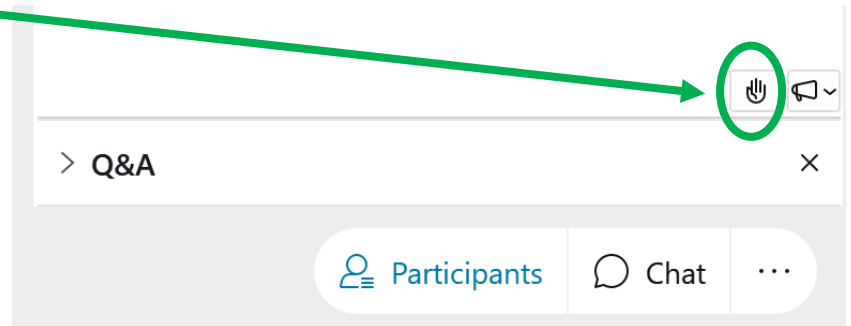
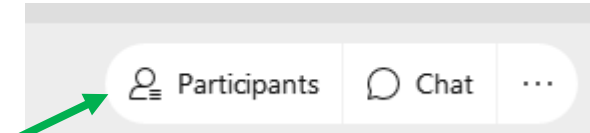
Webinar Participants

The bottom right of the main window is a set of icons:

Click on “Participants”.

The bottom right of the participant window is a hand icon, click on the hand:

Clicking on it again will lower your hand.



Phone Participants

Press *3 on your telephone key pad to raise your hand.

Press *3 again on your telephone key pad to lower your hand when you are finished.

The Department will Establish Time Limits, if Necessary.

Thank You for Your Patience While We Work on This.

THANK YOU

Questions and Comments may be sent to:

Christopher M. Clark, Senior Siting Analyst

Oregon Department of Energy

550 Capitol St. NE; Salem, OR 97301

503-871-7254

christopher.clark@energy.oregon.gov