



Oregon

Tina Kotek, Governor

Department of State Lands

951 SW Simpson Ave., Suite #104

Bend, OR 97702

(541) 388-6112

FAX (541) 388-6480

www.oregon.gov/dsl

State Land Board

Tina Kotek

Governor

LaVonne Griffin-Valade

Secretary of State

Tobias Read

State Treasurer

DATE: August 29, 2024

TO: Interested Party

FROM: Oregon Department of State Lands

RE: Approved DSL State Lands Sale, Agency File # 63360-LS

A filled land parcel on the Astoria waterfront in Clatsop County will be sold:

0.57 acres in Township 08N, Range 09W, Section 07 CA, Tax Lots 401 and 402.

The parcel is located at 10 Basin St, Astoria, OR 97103, along the Astoria waterfront.

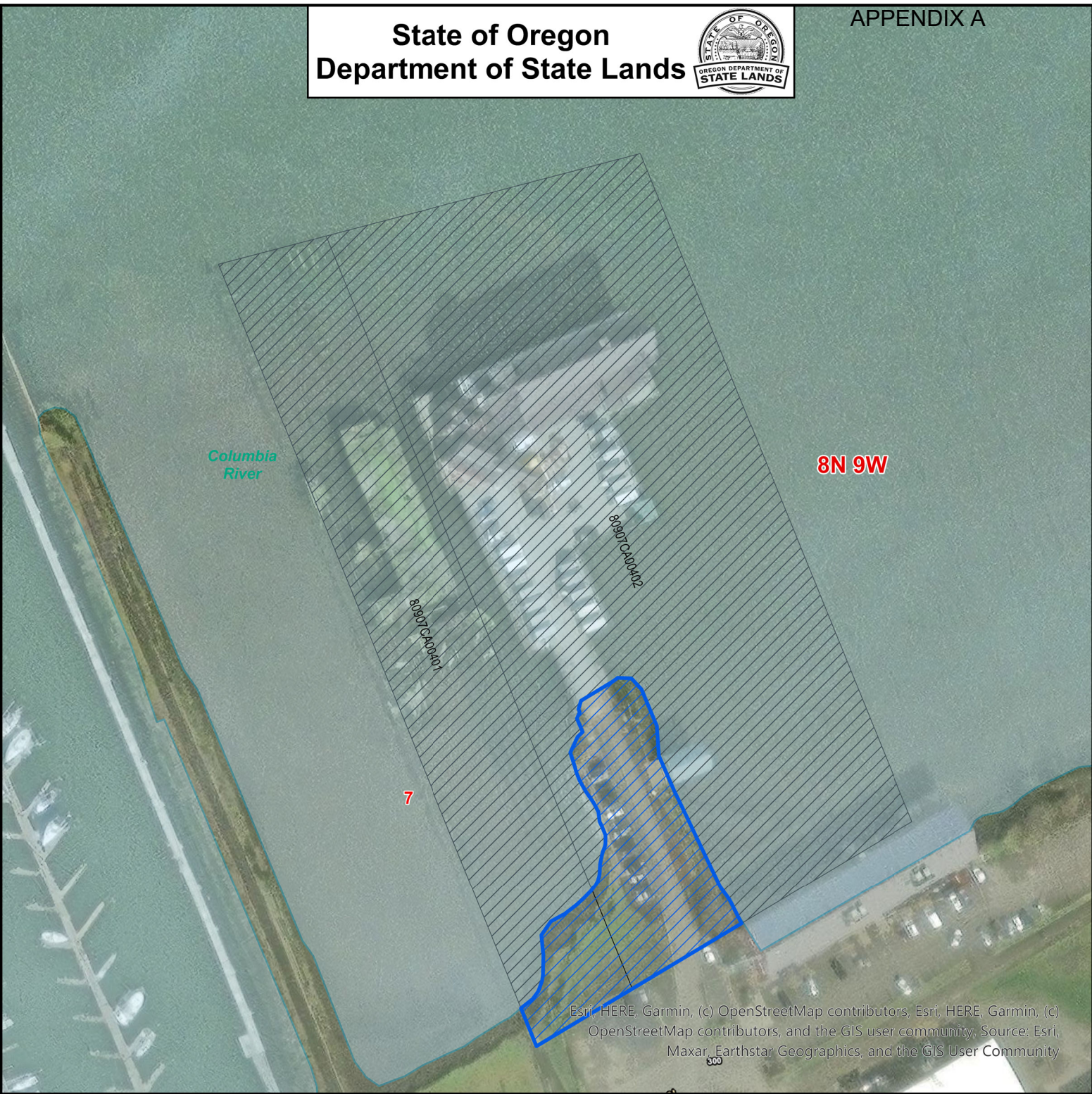
The parcel is classified as *new lands*, land that has been created by filling or depositing material in a state-owned waterway.

Additional Background

The Oregon State Land Board approved the sale on August 13, 2024, following a due diligence process in which the Department of State Lands collected information about the land and comments from the public to help inform a sale decision. The public comment period for this sale was held from October 22 to November 21, 2021. Learn more at: <https://www.oregon.gov/dsl/Land/Pages/Sales.aspx>

Comments may be emailed to realproperty@dsl.oregon.gov or mailed to the Real Property Program at 951 SW Simpson Ave., Suite #104, Bend, OR 97702.


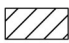
About the State Land Board and the Department of State Lands: *The State Land Board consists of Governor Tina Kotek, Secretary of State LaVonne Griffin-Valade, and State Treasurer Tobias Read. Established by the Oregon Constitution in 1859, the Land Board oversees the state's Common School Fund. The Department of State Lands is the Land Board's administrative agency, managing the lands and resources that help fund Oregon's public schools and protecting the state's waterways and wetlands for the many benefits they provide.*



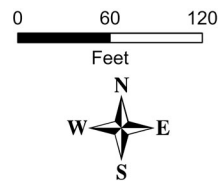
Esri, HERE, Garmin, (c) OpenStreetMap contributors, Esri, HERE, Garmin, (c) OpenStreetMap contributors, and the GIS user community, Source: Esri, Maxar, Earthstar Geographics, and the GIS User Community

Appendix A

63360-LS
T08N, R09W Section 07
Clatsop County

-  DSL Lands
-  Master Property

This map depicts the approximate location and extent of a Department of State Lands Proprietary authorization for use. This product is for informational purposes only and may not have been prepared for, or be suitable for legal, engineering, or surveying purposes. Users of this information should review or consult the primary data and information sources to ascertain the usability of the information.



Map Projection:
Oregon Statewide Lambert
Datum NAD83
International Feet
State of Oregon
Department of State Lands
775 Summer St NE, Suite 100
Salem, OR 97301
503-986-5200
www.oregon.gov/DSL
Date: 7/22/2024

