



Forest Management Plan

Elliott State Research Forest

Information and Listening
Session
July 2024

Agenda



12:00 PM – Welcome and Information Session

- Overview of the proposed Forest Management Plan for the Elliott State Research Forest

12:30 PM – Q&A

12:50 PM – Listening Session

- Hear community feedback

1:30 PM – Meeting ends

**Agenda is estimated and dependent upon duration of Q&A. The listening session will begin immediately following close of the information session.*

Give Input Today



Use the "Raise Hand" feature to provide comment. Time is limited and we may not be able to hear from all of you today.

- To raise your hand, click the reactions near the bottom of your screen and click "raise hand" or by pressing *9 if you are on the phone.
- You will be called in the order in which (virtual) hands are raised.
- Please keep your mic muted unless it is your turn to speak.

When it's your turn to speak:

- When your turn is coming up, the moderator will call on you to begin speaking.
- Please say your name, where you're from, and any organization you're representing.
- Please keep your remarks to **three minutes** and be respectful of each other and agency representatives. We will help track your time.

Provide Written Comment



Written comments may be submitted
through **Sunday, July 28, 2024** by:



Email

elliottproject.dsl@oregon.gov



Forest Management Plan

Elliott State Research Forest

Director Vicki Walker

Brett Brownscombe, Elliott State Forest Transition Director

Ryan Singleton, Forester

ESRF Workplan Status – June 2024

	Key Actions	2024 Key Targets
1	Implement DSL Management Structure	 Spring: Structure drafted, staffing in progress  Fall: Initial staffing complete
2	Adopt an Oversight Structure	 April: Oversight structure in place  June: State Land Board appoints oversight board
3	Develop Business Plan, 2025-27 Budget Request	 February: \$4 million request in Legislative Session  Summer: POP in DSL agency request budget
4	Finalize Forest Management Plan	 April: Draft released for public input (June--adjusted)  June: State Land Board approval requested (October—adjusted)
5	Complete Habitat Conservation Plan	 Summer: Final federal negotiations complete  End of 2024: Federal permits secured
6	Secure Research Partnerships, Other Partnerships	 Summer: Research entity identified, connected to operations  Ongoing: Tribal consultation(s); Local partners; agencies

STATUS KEY



Complete



On Track



Needs Adjustment



What is the Elliott State Research Forest?

The Hanis (Coos) and Quiich (Lower Umpqua) people are the original people and stewards of the lands

1930

82,500-acre Elliott State Forest was established as Oregon's first state forest

1955

The Elliott generates revenue for Oregon public schools through timber production

2013

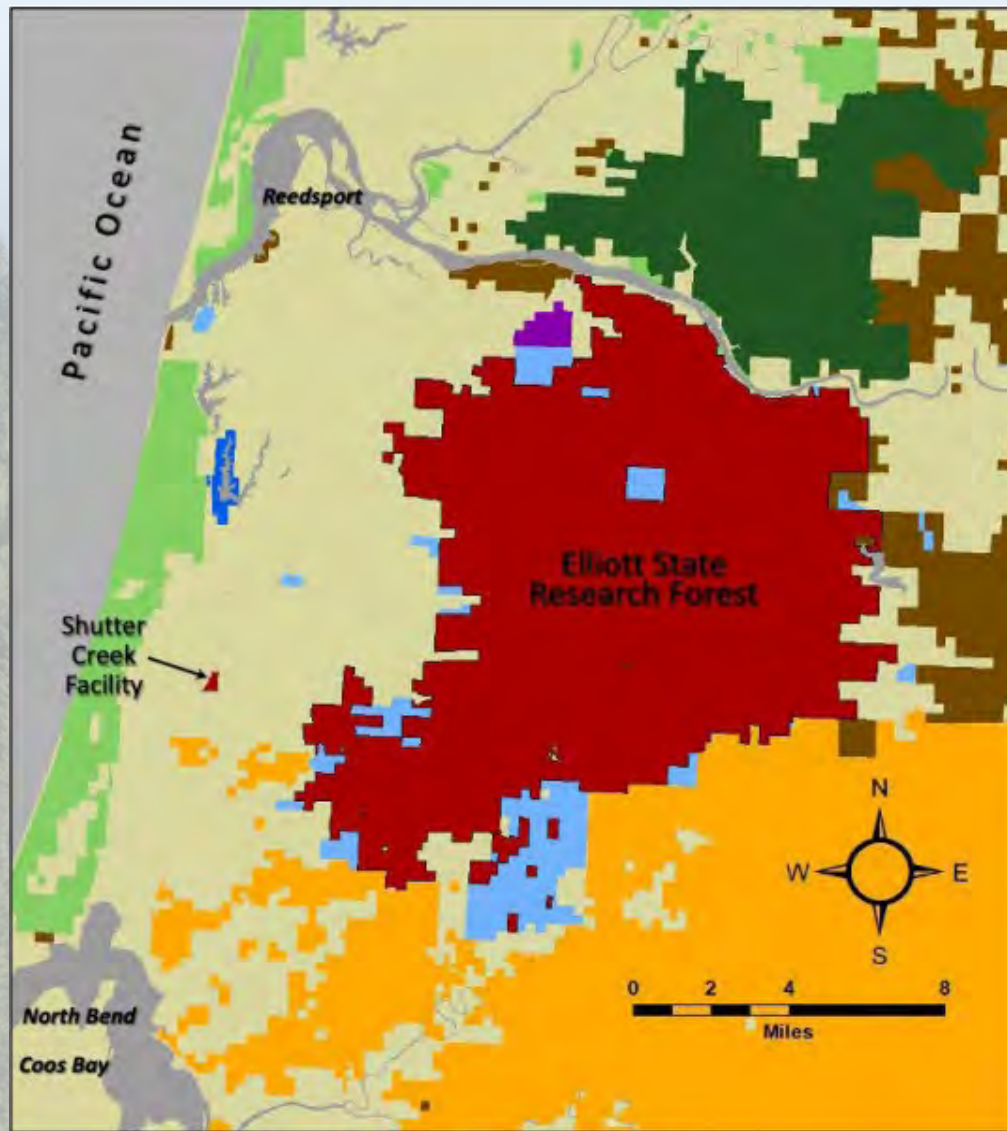
Endangered species litigation halts timber sales; State engages auction process

2017

Oregon State Land Board pivots to vision for the Elliott as a working public research forest

TODAY

Managed by the Department of State Lands and the ESRF Board of Directors



ESRF Adjacent Ownerships

- | | |
|--|--|
| ■ ESRF | ■ Oregon State Parks |
| ■ ODF | ■ DSL Hakki Ridge Parcel |
| ■ USFS | ■ Weyerhaeuser Millicoma Tree Farm |
| ■ BLM | ■ Devil's Staircase Wilderness (USFS & BLM) |
| ■ Water | ■ Private (Individual or Corporation) |



State Land Board Vision for the Elliott

- Keeping the forest publicly owned with public access
- Decoupling the forest from the Common School Fund, compensating the school fund for the forest and releasing the forest from its obligation to generate revenue for schools
- Continuing habitat conservation planning to protect species and allow for harvest
- Providing for multiple forest benefits, including recreation, education, and working forest research

Forest Management Plan Timeline

Timeline	Activity
June 12, 2024	Draft published on DSL website
June-Aug. 2024	Community engagement process <i>45-day comment period and virtual and in-person listening sessions</i>
	Tribal, other government, and ESRF Board engagement <i>Led by DSL</i>
Aug.-Sept. 2024	Feedback reviewed, addressed, revised FMP ready
October 8, 2024	Proposed FMP presented to State Land Board <i>Action item for decision</i>

Informing the Plan





What is a Forest Management Plan?

This is our guiding document for how the Elliott State Research Forest will be managed. This plan was crafted with guidance by the original ESRF Advisory Committee (including three Tribes), the Oregon State University (OSU) Research Proposal, and the State Land Board.

The Forest Management Plan will:

- Provide for multiple forest benefits: recreation, education, and working forest research.
- Keep the forest publicly owned with public access.
- Incorporate commitments outlined in the Habitat Conservation Plan.



Major Changes Since the 2023 Draft FMP

- Keeps information and direction in the Oregon State University Forest Management Plan
- Shifts management of the Research Forest from OSU to Department of State Lands
- Allows continued conversations on selecting DSL's research partner
- Holds space for a formal recreation and education plan process
- Holds space for ongoing conversations with Western Oregon Tribes and integrating indigenous interests



CHAPTERS 1 AND 2

Vision and Direction Governance, Organization and Revenue

These chapters advance guiding principles, establish a governance structure, and demonstrates the Elliott State Research Forest financial viability.

Highlights include:

- Updates forest history/description and organizational structure to conform with Land Board vision and policy decisions
- Retains the high level of detail included in OSU's initial FMP
- Provides a draft budget, including multiple revenue sources and cost management

CHAPTER 3

Partnerships for Research, Conservation, Education, and Recreation

To be successful, we will need strong and effective partnerships with many different entities who hold unique expertise.

Highlights include:

- DSL's intent to continue partnering with OSU as a potential research partner
- Asserts principles for Tribal partnerships and integration of indigenous knowledge
- Protects current recreation and education practices until a formal planning exercise has been conducted



Photo Courtesy of: SSNERR Intern, DSL

CHAPTER 4

Research Forest Design

The Department of State Lands Draft FMP advances more clear focus in some areas while adding flexibility in others when compared with OSU's draft.

Highlights include:

- Proposes flexibility for extensive and intensive forest management
- Advances a unifying research question and core themes while also adding nuance to long-term research goals
- Places more focus on carbon and biodiversity management by proposing Carbon and Biodiversity Management Areas



Photo Courtesy of: Ali Ryan Hansen, DSL

CHAPTER 5

Research Planning and Implementation

In the current DSL draft, this chapter is currently blank.

Highlights include:

- Moves key components from this chapter into Chapter 2 under Governance
- Includes a Science Advisory Committee to assist in the planning and development of research



Photo Courtesy of: Ali Ryan Hansen, DSL

CHAPTER 6

Silviculture, Harvest Systems, and Operations Planning

This chapter outlines forest management and various harvest systems to be implemented in the Elliott.

Highlights include:

- Details how intensive, extensive / ecological and restoration thinning would be advanced
- Elements included in biennial operations plans
- Holds space for the Carbon and Biodiversity Management Area
- Rearranges goals and objectives for research that is management-focused



CHAPTER 7

Aquatic and Riparian Systems

Tailored to the unique landscape of the Elliott, this chapter outlines how critical aquatic areas will be classified, protected, and restored.

Highlights include:

- Defines and explains the underlying approach around aquatic resources, stream classifications, watershed delineations, and riparian buffer protections
- Covers intended aquatic conservation and restoration strategy for steep slopes, wood and sediment recruitment, and riparian thinning
- Outlines other restoration projects and commits to a Roads Assessment within 12 years



CHAPTER 8

Climate Change, Adaptive Silviculture, and Forest Carbon

This chapter connects our work on the Elliott to the State's broader plans related to carbon and climate.

Highlights include:

- Relies more on carbon sequestration and climate considerations as compared to the OSU version
- Illustrates our commitment to climate resiliency through climate smart forestry practices
- Identifies areas where more research is needed on forest carbon

CHAPTER 9

Species Conservation

The Elliott provides suitable habitat for over 200 species, including most native species found in Coast Range forests.

Highlights include:

- Retains much of the conservation work put forth in the OSU plan and expands the biodiversity strategy beyond monitoring
- Preserves connection to the Oregon Conservation Strategy
- Revises the Marbled Murrelet experimental design





CHAPTER 10 AND CHAPTER 11

Monitoring, Adaptive Research and Management

These chapters provide flexibility as DSL selects a research partner while maintaining core monitoring and adaptive management policies.

Highlights include:

- Allows for monitoring related to the Habitat Conservation Plan and additional monitoring for other research goals
- Requires additional detail dependent on the research partner that will be selected
- Reflects DSL's commitment to adaptive management, allowing for changes in policy based on ongoing research

CHAPTER 12

Disturbance, Forest Health and Resilience

Chapter 12 is carried forward from the OSU Forest Management Plan.

Highlights include:

- Connects management practices to our growing understanding of forest disturbance dynamics, including wind, snow, landslides, disease and pests
- Explains how natural disturbances will evolve in the Elliott over time
- Relies on ongoing research around climate change and wildfires to develop management techniques that mimic certain disturbances



Questions?



Provide Written Comment



Written comments may be submitted
through **Sunday, July 28, 2024** by:



Email

elliottproject.dsl@oregon.gov

Give Spoken Comment Today



Use the "Raise Hand" feature to provide comment. Time is limited and we may not be able to hear from all of you today.

- To raise your hand, click the reactions near the bottom of your screen and click "raise hand" or by pressing *9 if you are on the phone.
- You will be called in the order in which (virtual) hands are raised.
- Please keep your mic muted unless it is your turn to speak.

When it's your turn to speak:

- When your turn is coming up, the moderator will call on you to begin speaking.
- Please say your name, where you're from, and any organization you're representing.
- Please keep your remarks to **three minutes** and be respectful of each other and agency representatives. We will help track your time.



Thank You!

**Brett Brownscombe, Elliott
State Research Forest
Transition Director**

brett.brownscombe@dsl.oregon.gov

Oregon.gov/DSL