

Managing and Planning in Forested Drinking Watersheds

Trout Mountain Forestry

Coastal Partnerships For Drinking Water Protection Workshops, October 15-17, 2024

Introduction

- ▶ Trout Mountain Forestry
 - ▶ Manage ~30,000 acres in western Oregon
 - ▶ Landowners with diverse objectives
 - ▶ Municipalities, camps, families, land trusts
 - ▶ FSC® certified
- ▶ Trout Mountain Forestry municipal clients
 - ▶ Long-term (~20 yrs)
 - ▶ Forest Grove
 - ▶ Corvallis
 - ▶ Cannon Beach
 - ▶ New
 - ▶ Reedsport
 - ▶ Coquille



Forest Management Planning

- ▶ Management plans provide a framework and guidance
 - ▶ Not intended to be prescriptive or operational
- ▶ Identify baseline resource conditions and values
- ▶ Encapsulate goals, policies, practices, intent
- ▶ Provide a tool for communication
- ▶ Plans are adaptable, routinely updated

Forest Management Planning for Municipal Watersheds

- ▶ Water quality is primary beneficial use
- ▶ Other uses are also valued and considered in management
- ▶ Lands within municipal watersheds are typically part of a managed landscape

Forest Management on Municipal Forestlands

- ▶ Silvicultural applications
- ▶ Invasive species treatments
- ▶ Infrastructure management
- ▶ Wildlife habitat creation/promotion



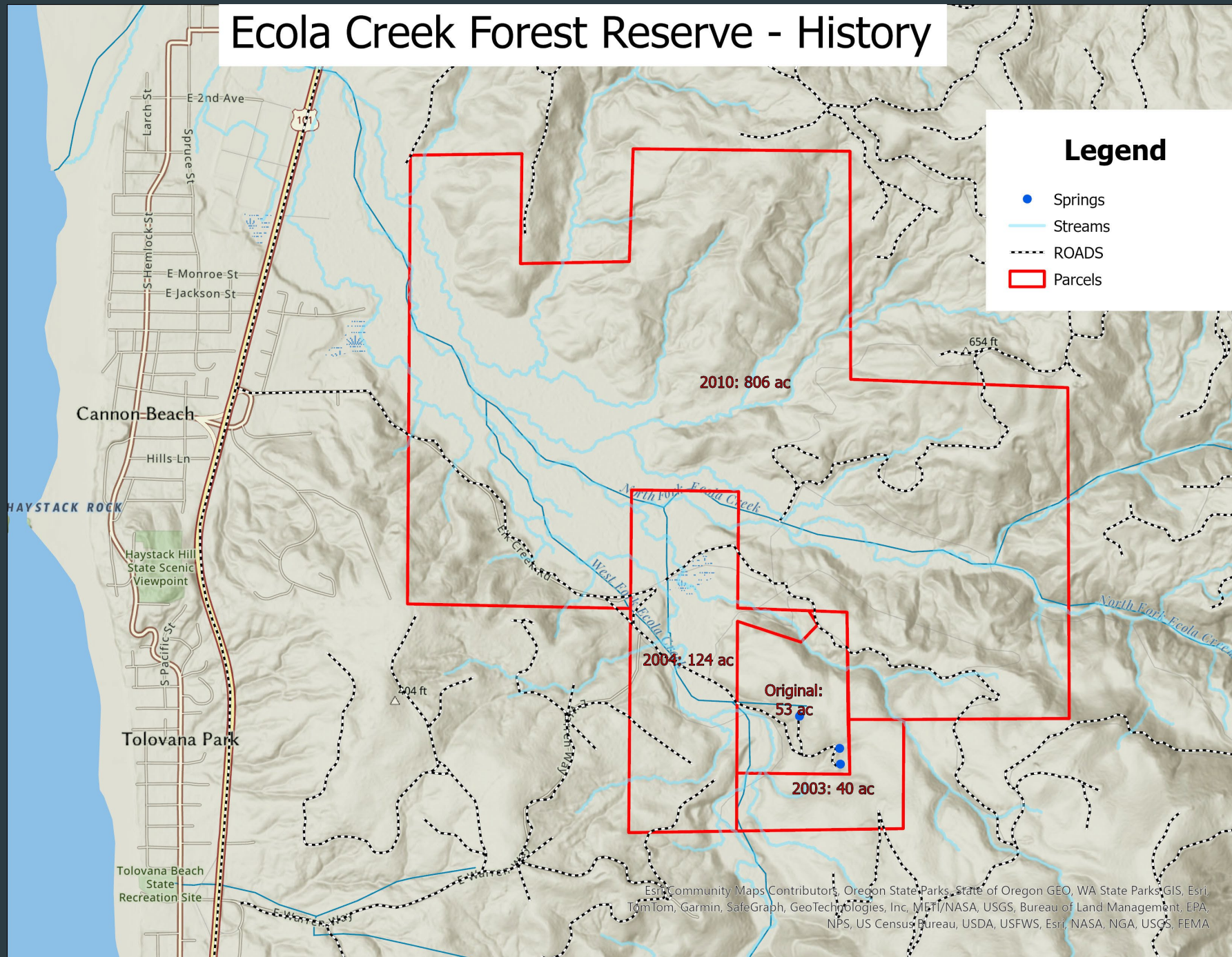
Stakeholders

- ▶ Each municipality defines them
- ▶ Engagement strategies differ between municipalities
- ▶ Can't underestimate their importance
- ▶ Water quality ranks highly among stakeholder concerns; but is not the only concern

City of Cannon Beach

- ▶ 2002: owned a mere 53 acres around springs
- ▶ 100% of community water comes from springs and Ecola Creek
- ▶ Community leaders opportunistically sought adjacent land - industrial and State
- ▶ By 2010, the Ecola Creek Forest Reserve (ECFR) was 1,040 acres

Ecola Creek Forest Reserve - History



Esri Community Maps Contributors, Oregon State Parks, State of Oregon GEO, WA State Parks GIS, Esri, TomTom, Garmin, SafeGraph, GeoTechnologies, Inc, MET/NASA, USGS, Bureau of Land Management, EPA, NPS, US Census Bureau, USDA, USFWS, Esri, NASA, NGA, USGS, FEMA

ECFR Management Planning

- ▶ OWEB funding required management plan
- ▶ Plans completed in 2006, 2013 (acquisition), and 2022 (update)
- ▶ Trout Mountain/Barry Sims: lead author for all 3
- ▶ Citizen Advisory Committee, City staff, consultants
- ▶ Public meetings/surveys

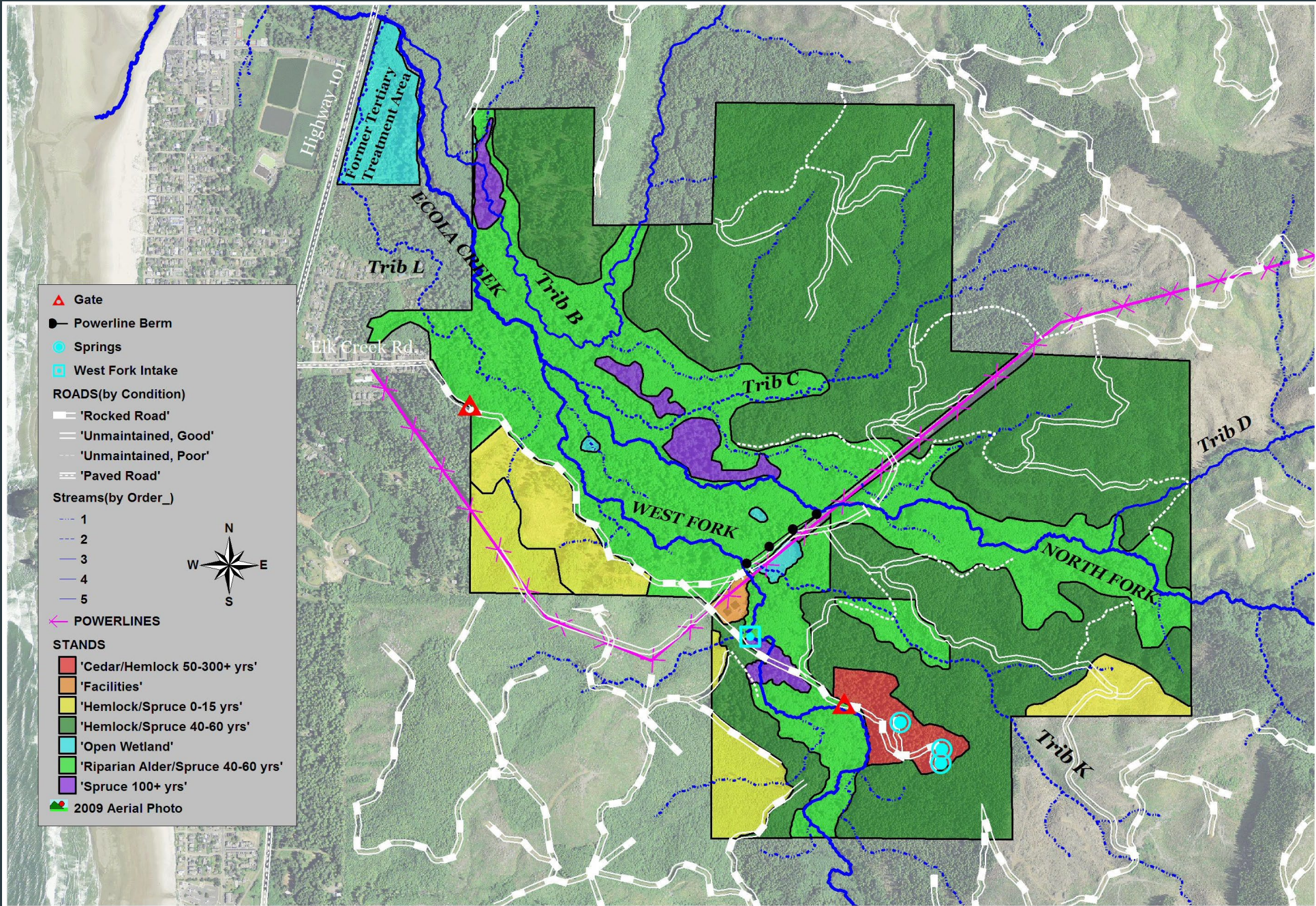
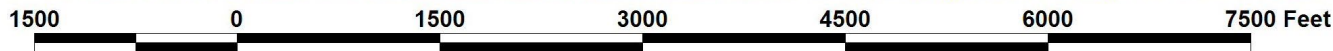


Ecola Creek Forest Reserve: Goals

- ▶ Protect and restore native forest
- ▶ Protect municipal water quality
- ▶ Protect and enhance salmon habitat
- ▶ Foster community involvement



▲ Gate
 ● Powerline Berm
 ● Springs
 □ West Fork Intake
ROADS (by Condition)
 — 'Rocked Road'
 — 'Unmaintained, Good'
 - - 'Unmaintained, Poor'
 = 'Paved Road'
Streams (by Order_)
 - - - 1
 - - - 2
 - - - 3
 - - - 4
 - - - 5
 ✂ POWERLINES
STANDS
 ■ 'Cedar/Hemlock 50-300+ yrs'
 ■ 'Facilities'
 ■ 'Hemlock/Spruce 0-15 yrs'
 ■ 'Hemlock/Spruce 40-60 yrs'
 ■ 'Open Wetland'
 ■ 'Riparian Alder/Spruce 40-60 yrs'
 ■ 'Spruce 100+ yrs'
 📷 2009 Aerial Photo



Management Planning- Round 2

- ▶ 2010 acquisition of the Ecola Tract from ODF- 806 acres
- ▶ 2013- updated plan complete
 - ▶ Same long-term goals and priorities
 - ▶ More public meetings and citizen advisory group
 - ▶ Forest management for restoration purposes
 - ▶ Hunting policy was controversial



Plan Implementation

- ▶ One commercial restoration-focused thinning 2013
- ▶ Road system would need major upgrades to continue thinning
- ▶ OWEB funded large log placement in Ecola Creek for fish
- ▶ Thousands of western redcedar trees planted





Management Planning- Round 3

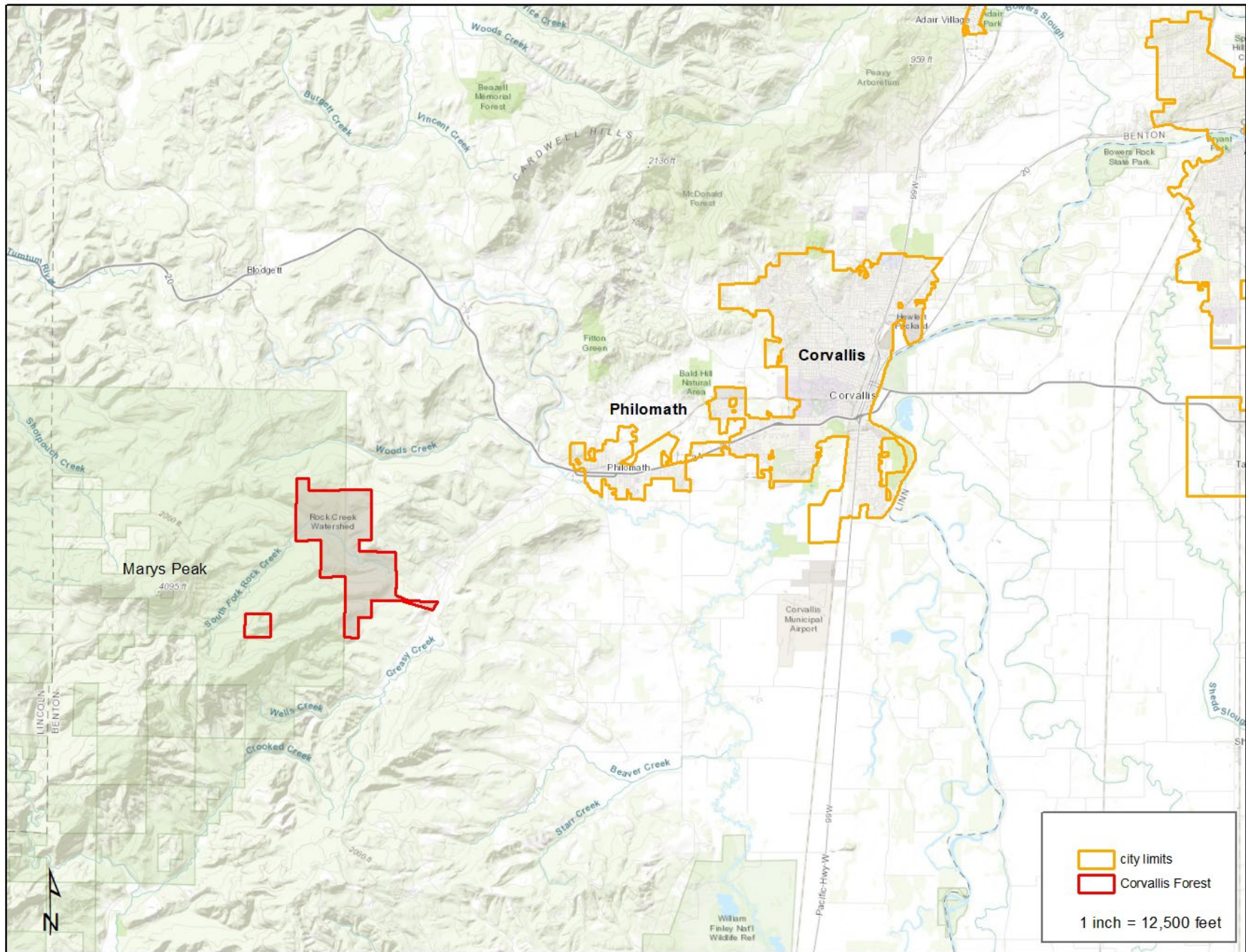
- ▶ Plan updated again in 2022
- ▶ Prompted by 2020 Labor Day Fires
- ▶ Addressing climate change, increased wildfire risk
- ▶ Echo Mountain Complex- coastal forests can burn!
- ▶ Road improvements needed for emergency access

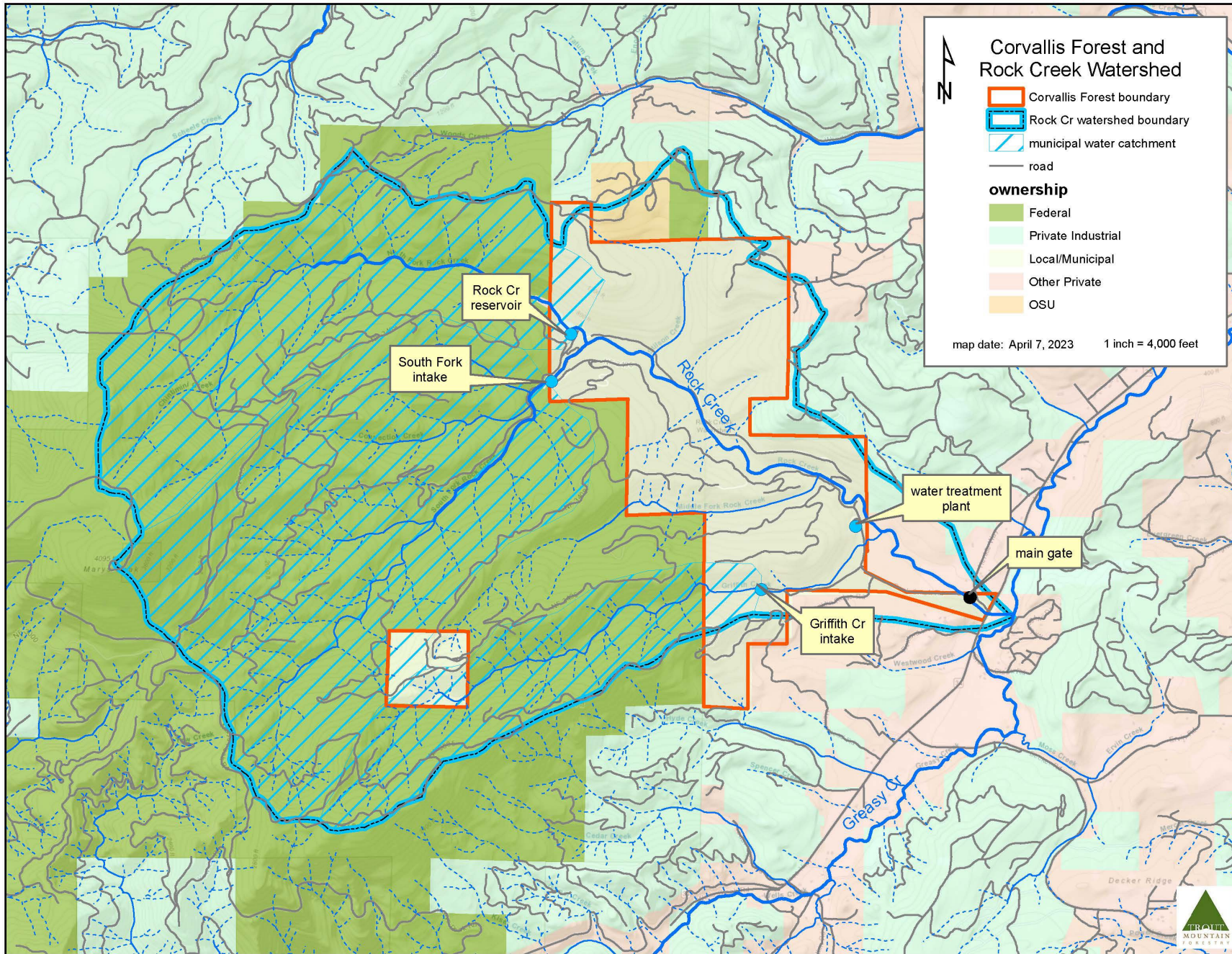
Fire and the ECFR

- ▶ Summer of 2023- wildfire started in ECFR
- ▶ First responders found roads lacked clearance turnarounds for safety
- ▶ Emergency road improvements completed

City of Corvallis Forest

- ▶ 2,370 acre forest within 10,000 acre Rock Creek Watershed
- ▶ 30% of city's water
- ▶ Designated in early 20th century
- ▶ Significant evolution of management approach over course of ownership





Corvallis Forest

- ▶ A range of forest conditions, management needs and opportunities
- ▶ Well informed, engaged community



Corvallis Forest Stewardship Plan

- ▶ CFSP developed by TMF in 2006, updated 2013
- ▶ New plan is in development, expected in 2025
- ▶ Plan is a ‘framework’
 - ▶ describes property
 - ▶ identifies values
 - ▶ establishes sideboards for management

Corvallis Stewardship Planning Process

- ▶ Involves Public Works, Consultant (TMF) and Public
 - ▶ Citizen Task Force
 - ▶ Monthly public meetings
- ▶ Vision, Guiding Principles and Policies developed and updated through public process



Corvallis Stewardship Public Engagement

- ▶ Ongoing public engagement
 - ▶ Public tours
 - ▶ Periodic advisory committee meetings
- ▶ Public concerns and interest are not static
 - ▶ Periodic plan updates reflect this
- ▶ All planning includes public process, including operational planning



Corvallis Forest Vision Statement

▶ 2024 Vision Statement

The Corvallis Forest within the Rock Creek Watershed is a model for sustainable forest management practices, esteemed by Corvallis residents as a diverse forested landscape that provides numerous benefits, including safe and reliable drinking water, resilience to climate change, diverse terrestrial and aquatic habitats for native species, and abundant carbon storage.

▶ It's not just the water!

Corvallis Values and Management

- ▶ Values can be complimentary
 - ▶ Water
 - ▶ Habitat
 - ▶ Ecosystem function
 - ▶ Climate benefits
 - ▶ Structural and compositional diversity
 - ▶ Resiliency
 - ▶ Risk mitigation
 - ▶ Good neighbor
 - ▶ Education, research
- ▶ Management actions must consider tradeoffs



Corvallis Plan Implementation

- ▶ Silviculture focuses on increasing diversity, promoting resiliency and protecting water resources
- ▶ Current conditions and plan drive implementation
 - ▶ Plantations, mid-age stands and old growth

Corvallis Plan Implementation

- ▶ Plantation thinning
- ▶ Middle-aged stands/opportunities for management
- ▶ Old-growth, riparian, and catchment areas in Reserve Status



Corvallis Plan Implementation

- ▶ Over past 10-year planning period, five harvests over 361 acres
 - ▶ 95% thinning
 - ▶ Variable retention harvest, riparian alder conversions comprised ~5%



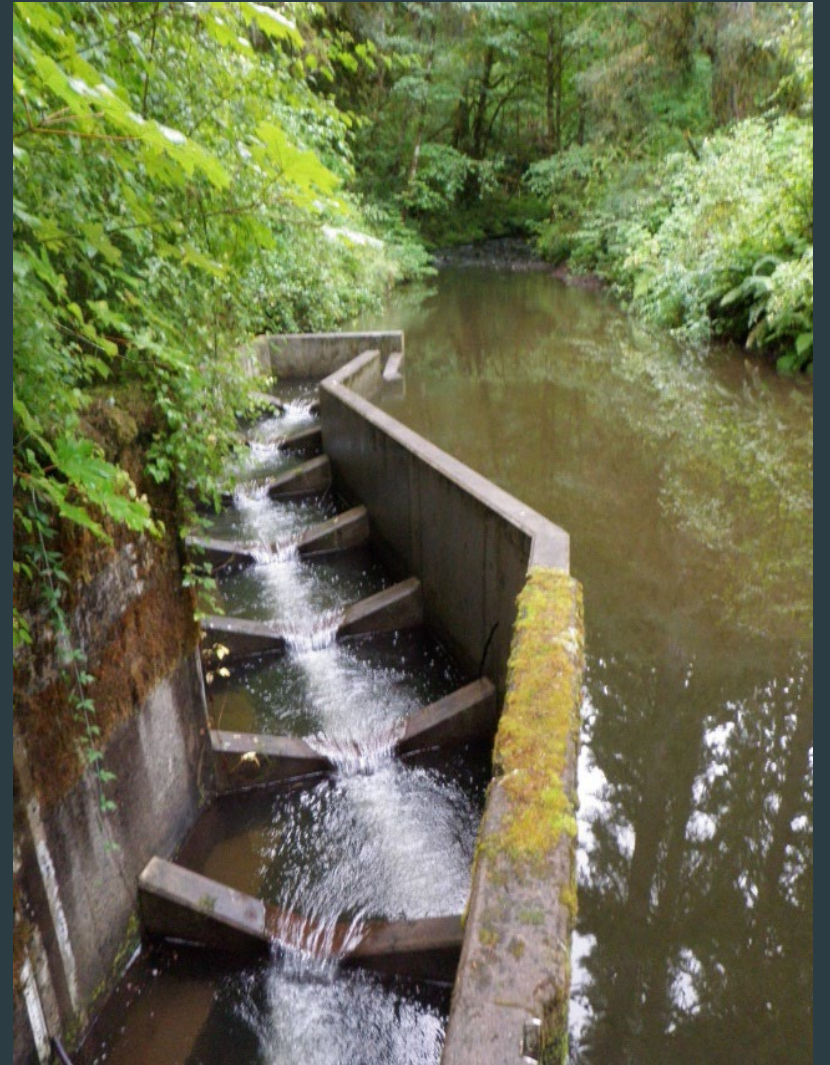
Corvallis Plan Implementation

- ▶ Riparian planting, large wood placement, culvert upgrades



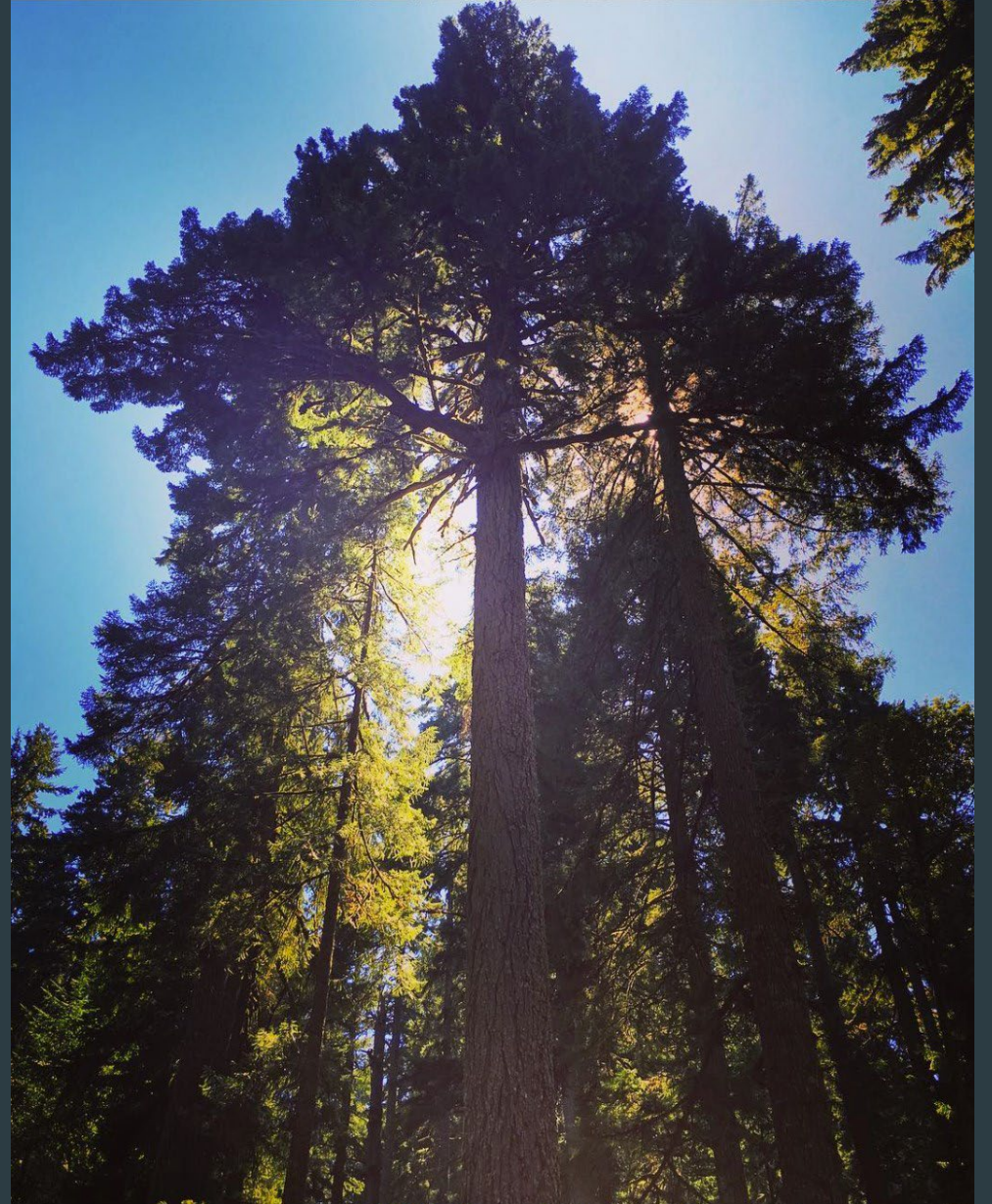
Corvallis Forest Additional Management

- ▶ Other activities include road maintenance, weed control, meadow restoration, precommercial thinning, snag creation
 - ▶ Rely on partnerships for much of this work



Conclusion

- ▶ Forest management in watersheds can take many forms
- ▶ Goals and objectives differ by municipality and community
- ▶ A balanced approach can help achieve multiple objectives



Thank You!

Barry Sims

barry@troutmountain.com

Matt Fehrenbacher

matt@troutmountain.com

Shane Hetzler

shane@troutmountain.com

541-435-0383

www.troutmountain.com

