



Oregon PaintCare Program

Annual Stakeholder Meeting

June 12, 2024





Meeting Overview

1. Our Team
2. Drop-off Sites & Services
3. Giveaway Event
4. Collection and Processing
5. Finances
6. Communications
7. Looking Ahead



1 | Our Team





Our Team

- **Lauren Scher**
OR and WA Program Manager
- **Kim Harless**
OR and WA Program Coordinator
(Multnomah, Clackamas, Clatsop, Columbia Counties)
- **Aaron Scott**
OR Program Coordinator
(All other Oregon Counties)



PaintCare

- Non-profit 501(c)(3) organization
- Represents paint manufacturers to plan and operate paint stewardship programs in the U.S. states and jurisdictions that pass paint stewardship laws
- Oregon law passed in 2009 and the program began in 2010
- Currently operates in 10 states and D.C.
- Illinois program is in development
- Maryland law recently passed

2 | Drop-off Sites & Services





Year-Round Drop-Off Sites

- Open at least one day per month in the reporting year

Or

- A new site which plans to be open at least one day per month going forward



Year-Round Drop-off Sites

Site Type	2021	2022	2023
Environmental Services Company	1	1	1
Household Hazardous Waste Facility	6	6	6
Paint Recycler	1	1	1
Paint Retailer	132	133	137
Reuse Store	24	23	25
Transfer Station	19	18	17
Total Sites	183	182	187



Supplemental Drop-off Sites

- Includes retail sites that may have gone out of business/sold/dropped from the program
- Includes HHW locations that may not be open year-round



Supplemental Drop-off Sites

Site Type	2021	2022	2023
Household Hazardous Waste Event Site/Number of Events	26/31	28/35	30/40
Household Hazardous Waste Facility (Seasonal)	3	4	4
PaintCare Event Site/Number of Events	5/5	5/5	6/6
Paint Retailer (Partial Year)	0	4	3
Reuse Store (Partial Year)	1	2	0
Transfer Station (Partial Year)	0	1	1
Transfer Station (Seasonal)	0	0	0
Total Sites	35	44	44



Large Volume Pickups

- Households and businesses with 100+ gallons
- Requests are submitted online via form
 - The request is reviewed by PaintCare staff
 - Once approved, the request will be assigned to a transporter to complete the pickup
- Frequent users may be converted to RLVP contract



Large Volume Pickups

Site/Service Type	2021	2022	2023
Direct Large Volume Pickup Site/Number of Pickups	61/70	59/67	84/92
Recurring Large Volume Pickup Site	15	15	16



Drop-off Sites & Services

- 187 year-round sites
 - 137 paint retailers
- 98.1% of Oregonians live within 15 miles of a drop-off site (supplemental sites included)

Drop-off Events

- Events held in underserved areas where the population is 15+ miles from a permanent drop-off site



Drop-off Events

- 5 events in 2023
 - Cave Junction
 - Willamina
 - Shady Cove
 - Milton-Freewater
 - Jewell
- All events included free giveaway of paint in good condition



3



Reuse & Giveaway Event





PaintCare Reuse Overview

- What is reuse?
 - Original container and label
 - At least half full and in good condition
 - Participants taking paint must sign a waiver
- Reuse to date:
 - LVP
 - Reuse stipend (\$1.60)

2023 Oregon Giveaway Event

- 211 Individuals registered
- 145 Individuals left with paint
- Over 1,600 gallons given away
- Attendees:
 - Families
 - Seniors
 - Young adults
 - Dogs





2023 Oregon Giveaway Event Partners



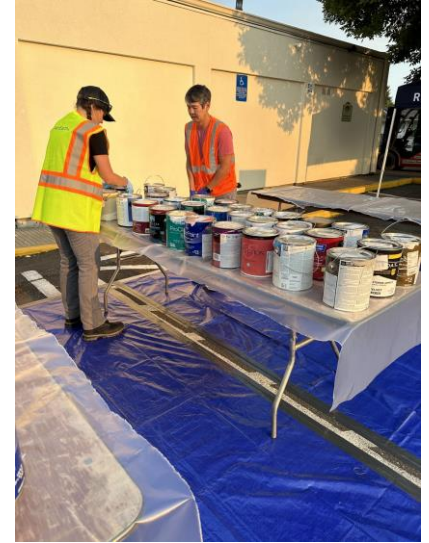
Solid Waste & Recycling



CENTRO CULTURAL

CleanEarth™





4

Collection & Processing





Gallons Collected, Sold, & Recovery Rate

Description	2021	2022	2023
Paint Collected (gallons)	740,102	697,872	648,554
New Paint Sold (gallons)	9,324,208	9,077,186	8,535,124
Recovery Rate	7.9%	7.7%	7.6%



Volume by Site Type / Service

Site Type/Service	2021 Gallons	2021 Percent	2022 Gallons	2022 Percent	2023 Gallons	2023 Percent
Environmental Services Company	835	<1	0	0	2,132	<1
HHW Facility/Event	270,693	37	232,490	33	195,441	30
LVP/RLVP	41,223	6	27,883	4	37,533	6
Paint Recycler	5253	1	33,218	5	5,114	<1
Paint Retailer	290,740	39	274,193	39	287,121	44
PaintCare Event	2,380	<1	3,392	1	2,345	<1
Reuse Store	59,697	8	61,275	9	51,557	8
Transfer Station	69,282	9	65,421	9	67,311	10
Total	740,103	100	697,872	100	648,554	100





Latex Paint Processing

Method	2021 Gallons	2021 Percent	2022 Gallons	2022 Percent	2023 Gallons	2023 Percent
Reuse	21,389	4	25,249	5	28,341	6
Paint-to-Paint Recycling	476,273	78	368,264	70	372,817	73
Biodegradation	36,206	6	111,098	21	80,651	16
Disposal	74,172	12	20,175	4	26,365	5
Total	608,040	100	524,786	100	508,174	100





Oil-Based Paint Processing

Method	2021 Gallons	2021 Percent	2022 Gallons	2022 Percent	2023 Gallons	2023 Percent
Reuse	3,870	3	4,700	4	5,107	3
Energy Recovery	128,158	97	102,561	95	151,416	97
Incineration	34	<1	239	<1	217	<1
Total	132,062	100	107,500	100	156,740	100

5 | Finances





Revenue & Expenses

PAINTCARE FEE SCHEDULE

Size	Container Size	Fee
Very Small	Half pint or smaller	\$0.00
Small	Larger than half pint up to smaller than 1 gallon	\$0.45
Medium	1–2 gallons	\$0.95
Large	Larger than 2 gallons up to 5 gallons	\$1.95



Revenue & Expenses

Revenue	2021	2022	2023
Total Revenue	6,004,763	5,553,009	5,208,942
Expenses	2021	2022	2023
Paint Processing and Transportation	4,724,976	4,133,895	4,164,424
Paint Collection Supplies and Support	73,523	52,293	30,940
Communications	44,445	205,029	108,868
Personnel, Professional Fees, Other	141,454	140,360	192,624
State Agency Administrative Fees	40,000	40,000	40,000
Allocation of Corporate Activity	305,546	313,182	340,874
Total Expenses	5,329,944	4,884,759	4,877,730





Revenue & Expenses

- Revenues dropped for the third year due to historically low paint sales
- A decrease in spending in Paint Transportation, as well as Paint Collection Supplies and Support, was due to a decrease in collected volume
- Reserve level as of December 31 was at 71%
 - Change in net assets of \$331,212

6 | Communications





Point-of-Sale Materials

- 8,120 materials distributed on request
- 91,760 materials mailed to 552 retailers



A Program to Manage Leftover Paint

Each year about 850 million gallons of architectural paint are sold in the United States. Did you know that about 10 percent goes unused and can be reused and recycled?

Oregon's paint stewardship law requires the paint manufacturing industry to operate a financially sustainable and environmentally responsible program to manage postconsumer (leftover) architectural paint. Paint manufacturers created PaintCare, a nonprofit organization, to run paint stewardship programs in states with applicable laws.

The program includes education about buying the right amount of paint, tips for using up remaining paint, and setting up convenient recycling locations throughout the state.

OR 89EN 0324

PaintCare Products

These products have a fee when you buy them and are accepted for drop-off at no additional cost:

- Interior and exterior architectural paints: latex, acrylic, water-based, alkyd, oil-based, enamel (including textured coatings)
- Deck coatings, floor paints (including elastomeric)
- Primers, sealers, undercoaters
- Stains
- Shellacs, lacquers, varnishes, urethanes (single component)
- Waterproofing concrete/masonry/wood sealers and repellents (not tar or bitumen-based)
- Metal coatings, rust preventatives
- Field and lawn paints

Leaking, unlabeled, and empty containers are not accepted at drop-off sites.

Non-PaintCare Products

- Paint thinners, mineral spirits, solvents
- Aerosol coatings
- Auto and marine paints
- Art and craft paints
- Caulk, epoxies, glues, adhesives
- Paint additives, colorants, tints, resins
- Wood preservatives (containing pesticides)
- Roof patch and repair
- Asphalt, tar, and bitumen-based products
- 2-component coatings
- Deck cleaners
- Traffic and road marking paints
- Industrial Maintenance (IM) coatings
- Original Equipment Manufacturer (OEM) (shop application) paints and finishes

For information about recycling and proper disposal of non-PaintCare products, please contact your garbage hauler, local environmental health agency, household hazardous waste program, or public works department.

OREGON



Recycle WITH PaintCare





It's easy to recycle your leftover paint, stain, and varnish.

Find a drop-off site near you:
(855) PAINT09 | paintcare.org

Recycle with PaintCare!

- Buy Right:** Consult with painting professionals and retailers to buy the right amount of paint and reduce potential waste.
- Use It Up:** Use up leftover paint on the surface you are painting, on additional painting projects around the house, or give it to someone else in your community.
- Recycle the Rest:** When you can't use up leftover paint, drop it off with PaintCare to get it recycled!

Visit www.paintcare.org to find a year-round paint drop-off site near you or schedule a large volume pickup.

PaintCare™
RECYCLING MADE EASY

What types of paint products can be recycled with PaintCare?

PAINTCARE PRODUCTS

The following are products included in the program. When purchased, the PaintCare fee is applied. These products are accepted at no additional cost when dropped off at PaintCare participating drop-off sites.

- Interior and exterior architectural paints: latex, acrylic, water-based, alkyd, oil-based
- Deck coatings, floor paints (including textured coatings)
- Primers, sealers, undercoaters
- Stains
- Shellacs, lacquers, varnishes, urethanes (single component)
- Waterproofing concrete/masonry/wood sealers and repellents (not tar or bitumen-based)
- Metal coatings, rust preventatives
- Field and lawn paints

NON-PAINTCARE PRODUCTS

The following are non-PaintCare products and are not included in the program. When purchased, the PaintCare fee is not applied. They are not accepted at PaintCare participating drop-off sites.

- Paint thinners, mineral spirits, solvents
- Aerosol paints (spray cans)
- Auto and marine paints
- Art and craft paints
- Caulk, epoxies, glues, adhesives
- Paint additives, colorants, tints, resins
- Wood preservatives (containing pesticides)
- Roof patch and repair
- Asphalt, tar, and bitumen-based products
- 2-component coatings
- Deck cleaners
- Traffic and road marking paints
- Industrial Maintenance (IM) coatings
- Original Equipment Manufacturer (OEM) (shop application) paints and finishes
- Containers that are leaking or empty, and containers without the original printed manufacturer's label are not accepted at retail drop-off sites

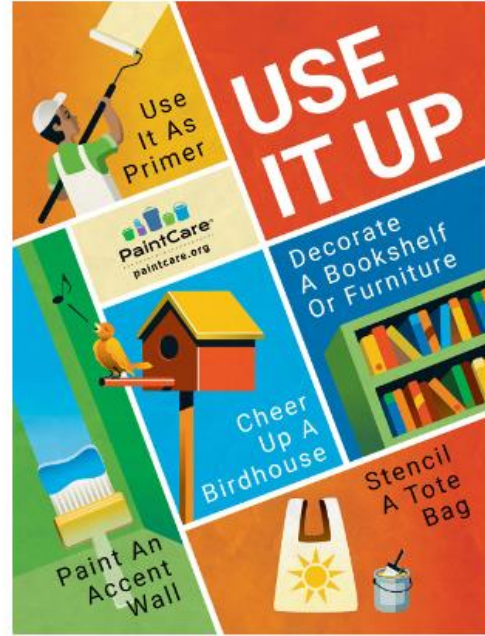
PROHIBITED PRODUCTS

The PaintCare fee is applied to the purchase price of architectural paint sold in Oregon as required by law. The fee is based on container size:

Half pint or smaller	\$0.00
Larger than half pint up to smaller than 1 gallon	\$0.45
1 gallon up to 2 gallons	\$0.95
Larger than 2 gallons up to 5 gallons	\$1.95

OR 89EN 0324

New Poster Set





Translations

- **29** languages other than English
- **Spanish** web page translation
- Language interpretation available on hotline





PaintCare®

RECYCLING MADE EASY

Signage



PaintCare®
RECYCLING MADE EASY

We are a PaintCare Partner

The fee on the sale
of paint in Oregon
funds our program.

Recycle with PaintCare

To learn more, visit paintcare.org
or call (855) PAINT09.



PaintCare™
RECYCLING MADE EASY

✔ PaintCare Products

These products have a fee when you buy them and are accepted for drop-off at no additional cost:

- Interior and exterior architectural paints: latex, acrylic, water-based, alkyd, oil-based, enamel (including textured coatings)
- Deck coatings, floor paints (including elastomeric)
- Primers, sealers, undercoaters
- Stains
- Shellacs, lacquers, varnishes, urethanes (single component)
- Waterproofing concrete/masonry/wood sealers and repellents (not tar or bitumen-based)
- Metal coatings, rust preventatives
- Field and lawn paints

Products must be in original containers with original labels.
Latex paint that is dried out and "rock hard" is also acceptable.

✘ Non-PaintCare Products

These products do not have a fee when purchased and are not accepted at drop-off sites:

- Paint thinners, mineral spirits, solvents
- Aerosol paints (spray cans)
- Auto and marine paints
- Arts and crafts paints
- Caulk, epoxies, glues, adhesives
- Paint additives, colorants, tints, resins
- Wood preservatives (containing pesticides)
- Roof patch and repair
- Asphalt, tar, and bitumen-based products
- 2-component coatings
- Deck cleaners
- Traffic and road marking paints
- Industrial Maintenance (IM) coatings
- Original Equipment Manufacturer (OEM) (shop application) paints and finishes

Leaking, unlabeled, and empty containers are not accepted at drop-off sites.

To learn more, please call (855) PAINT09 or visit www.paintcare.org

02-PF034-0011

NO DUMPING

STOP! IT'S ILLEGAL to dump or abandon Paint, Oil, or other Hazardous Waste

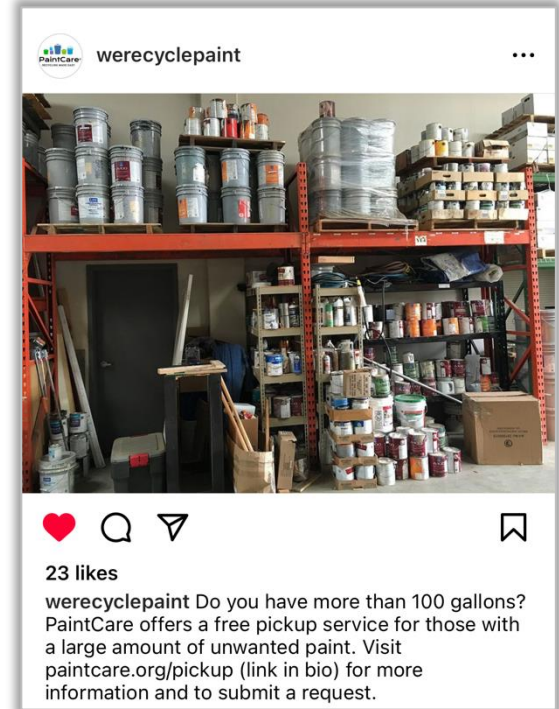


THIS AREA MAY BE UNDER VIDEO SURVEILLANCE

Violators Will Be Prosecuted

Social Media

- Facebook
- Instagram
- TikTok
- Buy right, use it up, recycle the rest
- Event promotion





Event Promotion – Print Advertising



Free Paint Giveaway Regalo de pintura

Saturday, August 26, 2023
9 a.m. – 1 p.m.

Sábado, 26 de agosto de 2023
De 9 a. m. a 1 p. m.

Centro Cultural
1110 N Adair St, Cornelius, OR 97113

Registration Required:
<https://paint-cornelius.eventbrite.com>

PaintCare is giving away leftover paint in good condition to households and businesses as part of Oregon's statewide paint stewardship program. PaintCare collects leftover paint at over 180 drop-off sites across Oregon for reuse and recycling. Giving away paint for reuse is a cost effective, efficient method of managing leftover paint. Reuse and recycling help divert leftover paint from landfills and the environment.

Attendees can browse partially filled containers of a variety of products including latex- and oil-based paints, primers, and stains. Color options and volumes are not guaranteed, and paint is given away on a first come, first served basis. Attendees will be limited to taking less than 25 gallons of free paint.

NEED TO RECYCLE YOUR PAINT?

To find a year-round PaintCare drop-off site near you, visit www.paintcare.org or call (855) PAINT09.



SCAN CODE TO REGISTER

ESCANEE EL CÓDIGO
PARA REGISTRARSE

Se requiere registro:
<https://paint-cornelius.eventbrite.com>

PaintCare regalará pintura sobrante en buen estado a hogares y empresas como parte del programa estatal de administración de pintura de Oregon. PaintCare reúne pintura sobrante en más de 180 lugares de entrega de Oregon, para reutilizarla y reciclarla. Regalar pintura para su reutilización es un método rentable y eficaz de gestión de la pintura sobrante. La reutilización y el reciclaje ayudan a evitar que la pintura sobrante acabe en los vertederos y en el medio ambiente.

Los asistentes pueden examinar envases parcialmente llenos de diversos productos, como pinturas de látex y de aceite, imprimantes y tintes. Las opciones de color y los volúmenes no están garantizados, y la pintura se entrega por orden de llegada. Los asistentes no podrán llevarse más de 25 galones de pintura gratuita.

¿NECESITA RECICLAR SU PINTURA?

Para encontrar un lugar de entrega de PaintCare durante todo el año cerca de usted, visite www.paintcare.org o llame al (855) PAINT09.



Joint Outreach



Paint Recycling Made Easy

Recycle Your Paint

There are over 180 PaintCare sites in Oregon where households and businesses can recycle or dispose of unwanted paint, stain, and varnish all year round, including these sites in Tillamook County:

True Value

34995 River Ave
Pacific City
(503) 965-6295

Tillamook County HHW

1315 Ekloff Rd
Tillamook
(503) 815-3975
9 a.m. - 1 p.m.

Manzanita Transfer Station

34995 Necarney City Rd
Manzanita
(503) 368-7764

on this date: **Saturday, July 15, 2023**

<https://www.co.tillamook.or.us/solid-waste>

All PaintCare sites accept up to 5 gallons per visit (some take more). Please call ahead to confirm business hours and ask if they can accept the type and amount of paint you would like to recycle. PaintCare sites do not accept aerosols (spray paint), leaking, unlabeled, or empty containers.



LEARN MORE: VISIT [PAINTCARE.ORG](https://www.paintcare.org) OR CALL (855) PAINT09



Face to Face

- 20+ activities
- National trade shows
- Local community fairs
- Conferences & association meetings
- D.C. Legislator meetings





Program Goals

- PaintCare proposed two amendments to program plan (Communications Section) with new goals
- Goal for reducing amount of post-consumer paint
- Goal for increasing public awareness of the program
- In February 2024, DEQ conditionally approved the goals through April 1, 2026
- Added to program plan, will be posted online when approved



Program Goals

Goal: Reducing Amount of Post-Consumer Paint

- Annual paint consumer survey
- Measure awareness of best practices for buying, using, storing paint
- Increase awareness of factors by average of 5% across all within 10 years
- Conduct and adjust outreach campaigns as needed to improve results



Program Goals

Goal: Reducing Amount of Post-Consumer Paint

2023 baseline results:

- 47% took measurements before painting to plan the right amount.
- 31% consulted with a salesperson when buying paint to plan the right amount.
- 21% followed instructions on the label to plan the right amount.
- 20% searched online for advice on planning the right amount.
- 13% used a web-based paint calculator tool for planning the right amount.
- 61% were aware that using a rubber mallet when sealing paint can lids helps avoid damage to the can.
- 57% were aware that cleaning the container's rim helps ensure a more airtight seal.
- 57% were aware that keeping paint away from freezing temperatures may preserve it longer.
- 52% were aware that storing paint away from dampness may preserve it longer.
- 51% were aware that using a paint can key or opener tool may help avoid damage to the can rim and lid.



Program Goals

Goal: Increase Awareness of Program

- Annual paint consumer survey
- Measure awareness paint can be recycled/reused, availability of paint drop-off opportunities aware, aware of PaintCare
- Increase awareness of factors by average of 10% across all within 10 years
- Conduct and adjust outreach campaigns as needed to improve results



Program Goals

Goal: Increase Awareness of Program

2023 baseline results:

- 42% of paint consumers were aware that paint can be recycled.
- 51% of paint consumers were aware of paint drop-off opportunities in the state.
- 8% of paint consumers were aware of the organization named PaintCare that operates the paint stewardship program.

7 | Looking Ahead





Looking Ahead

- Continue focus on visiting non-drop-off sites
- Host two giveaway events (Cornelius and Oak Grove)
- Host two collection events (Cave Junction and Shady Cove)



Thank
you!





Contact Us

Lauren Scher
Oregon & Washington
Program Manager
lscher@paint.org
503-410-1648

Kim Harless
Oregon & Washington
Program Coordinator
kharless@paint.org
360-450-1639

Aaron Scott
Oregon Program
Coordinator
ascott@paint.org
541-452-3586