

# OPERATIONS AND MAINTENANCE MANUAL

DFI No.: D01067

Facility Type: **Water Quality Biofiltration Swale**



April, 2020

## INDEX

1. Identification
2. Facility Contact Information
3. Construction
4. Facility Overview
5. Facility Haz Mat Spill Feature(s)
6. Auxiliary Outlet(High Flow Bypass)
7. Maintenance Requirements
8. Waste Material Handling

APPENDIX A:	Operations Plan and Profile Drawing(s)
APPENDIX B:	ODOT Project Plan Sheets
APPENDIX C:	Photos

## 1. Identification

Drainage Facility ID (DFI): **D01067**  
Facility Type: Water Quality Biofiltration Swale  
Construction: 52V-013  
Drawings:

Location: District: 5  
Florence-Eugene Highway No. 62  
Milepost: 32.45/32.47 (beg./end)

## 2. Facility Contact Information

Contact the Engineer of Record, Region Technical Center, or Geo-Environmental's Senior Hydraulics Engineer for:

- Operational clarification
- Maintenance clarification
- Repair or restoration assistance

### Engineering Contacts:

Region Technical Center Hydraulics Engineer (503) 986-2691

Or

Geo-Environmental Senior Hydraulic Engineer (503) 986-3365

## 3. Construction

Engineer of Record: ODOT Designer - Region 2 Tech. Center,  
Chris Carman, (503) 986-2691

Facility construction: 2019  
Contractor: TBD  
Contract #: 15126

## 4. Facility Overview

The swale is located at milepost 32.45 on the Florence-Eugene highway 62 on the north side of the highway. Treatment of pollutants from the highway are achieved through sedimentation and infiltration through the water quality mix shown in section B-B in the operational plan.

## 5. Facility Haz Mat Spill Feature(s)

The swale can be used to store a volume of liquid by blocking the outlet of the swale. A barrier such as a temporary berm made of sandbags could be used to prevent liquid from draining from the swale.

## 6. Auxiliary Outlet (High Flow Bypass)

This facility does not contain an auxiliary outlet feature. The facility was designed to receive runoff from the road and discharge into cross pipes.

## 7. Maintenance Requirements

Routine maintenance table for non-proprietary stormwater treatment and storage/detention facilities have been incorporated into ODOT's Maintenance Guide. These tables summarize the maintenance requirements for ponds, swales, filter strips, bioslopes, and detention tanks and vaults. Special maintenance requirements in addition to the routine requirements are noted below when applicable.

The ODOT Maintenance Guide can be viewed at the following website:

[https://www.oregon.gov/ODOT/HWY/OOM/mg/02/act125\\_waterqualityfacil\\_andtables.pdf](https://www.oregon.gov/ODOT/HWY/OOM/mg/02/act125_waterqualityfacil_andtables.pdf)

The following stormwater facility maintenance table (See ODOT Maintenance Guide) should be used to maintain the facility outlined in this Operation and Maintenance Manual or follow the Maintenance requirements outlined in Appendix C when proprietary structure is selected below:

- Table 1 (general maintenance)
- Table 2 (stormwater ponds)
- Table 3 (water quality biofiltration swales)
- Table 4 (water quality filter strips)
- Table 5 (water quality bioslopes)
- Table 6 (detention tank)
- Table 7 (detention vault)
- Appendix C (proprietary structure)
- Special Maintenance requirements:

## 8. Waste Material Handling

Material removed from the facility is defined as waste by DEQ. Refer to the roadwaste section 5.18 of the ODOT Maintenance Yard Environmental Management System (EMS) Policy and Procedures Manual for disposal options:

[https://www.oregon.gov/ODOT/HWY/OOM/EMSdoc/ems\\_manual.pdf](https://www.oregon.gov/ODOT/HWY/OOM/EMSdoc/ems_manual.pdf)

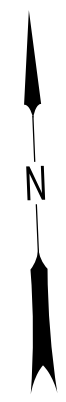
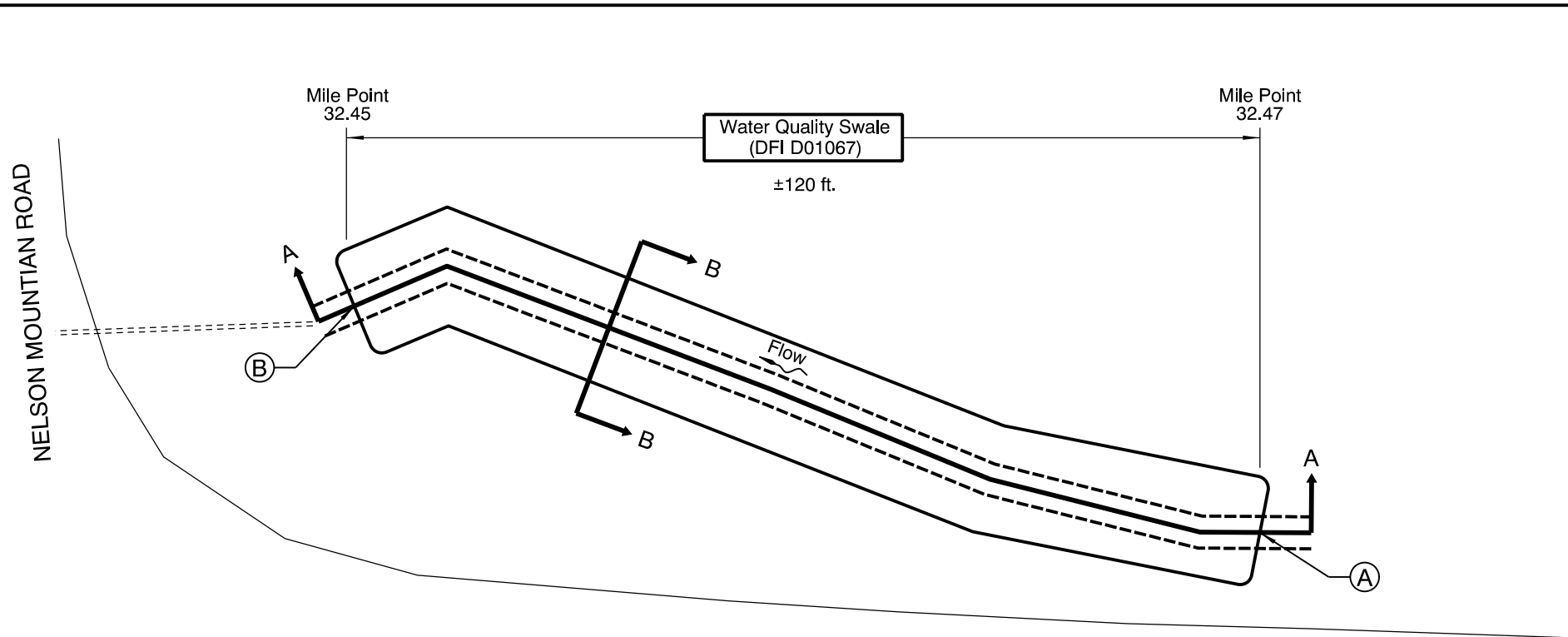
Contact any of the following for more detailed information about management of waste materials found on site:

ODOT Clean Water Unit	(503) 986-3008
ODOT Statewide Hazmat Coordinator	(503) 229-5129
ODOT Region Hazmat Coordinator	(503) 986-2647
ODEQ Northwest Region Office	(503) 229-5263

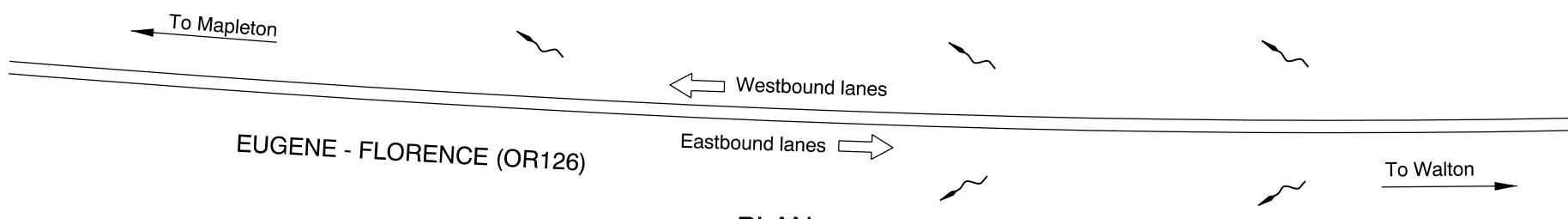
# Appendix A

## Content:

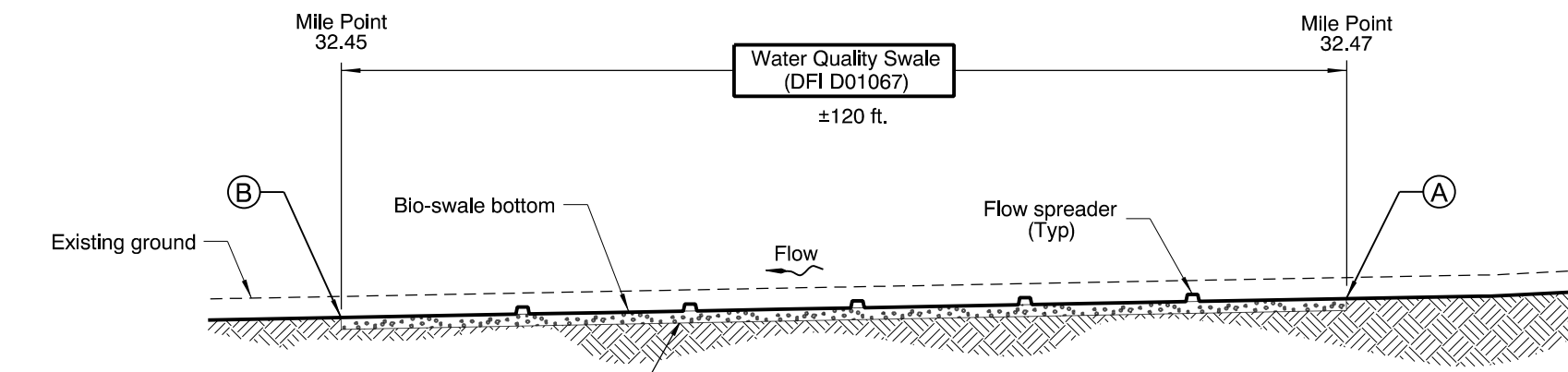
- **Operational Plan and Profile Drawing(s)**



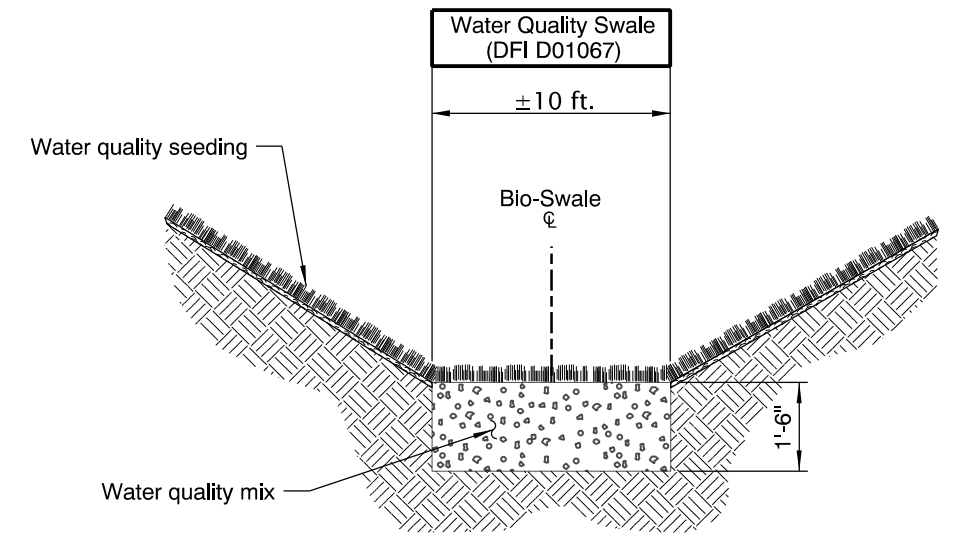
- LEGEND:**
- (A) Swale Inlet
  - (B) Swale Outlet
  - ~ Pavement / Facility Flow Path
  - - - Ditch Line
  - - - - Storm Pipe (Facility)
  - ▭ Swale Boundary
  - ➔ Traffic Direction



**PLAN**  
NTS



**Section A-A**  
NTS



**Section B-B**  
NTS

OREGON DEPARTMENT OF TRANSPORTATION

Prepared By: Chris Carman  
 Drafted By: Jeff Coon

**DFI D01067**  
**MAINTENANCE DISTRICT 5 HWY 62**  
**FACILITY TYPE**  
 HIGHWAY MP 32.45  
 LANE COUNTY

## Appendix B

### Content:

- **ODOT Project Plan Sheets**
  - *Cover/Title Sheet*
  - *Water Quality/Detention Plan Sheets*
  - *Other Details*

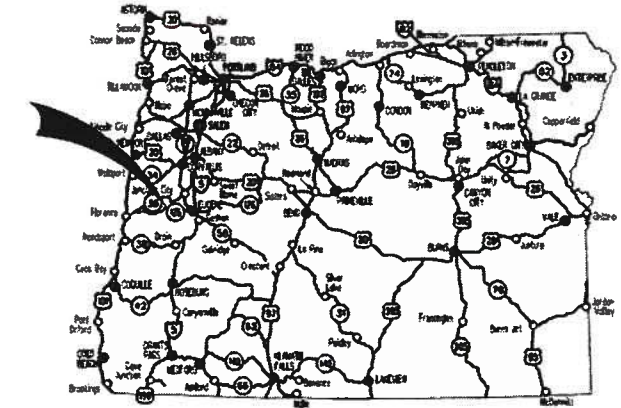


INDEX OF SHEETS	
SHEET NO.	DESCRIPTION
A01	Title Sheet
A02	Index Of Sheets Cont'd. & Std. Drg. Nos.
A03 Thru A07 Incl.	Survey Control Data

STATE OF OREGON  
 DEPARTMENT OF TRANSPORTATION

PLANS FOR PROPOSED PROJECT  
 GRADING, PAVING & SIGNING

**OR126: WALKER CREEK - CHICKAHOMINY CREEK SEC.**  
**FLORENCE - EUGENE HWY.**



Overall Length Of Project - 0.8 Miles

**BEGINNING OF PROJECT**  
**S062(041)**

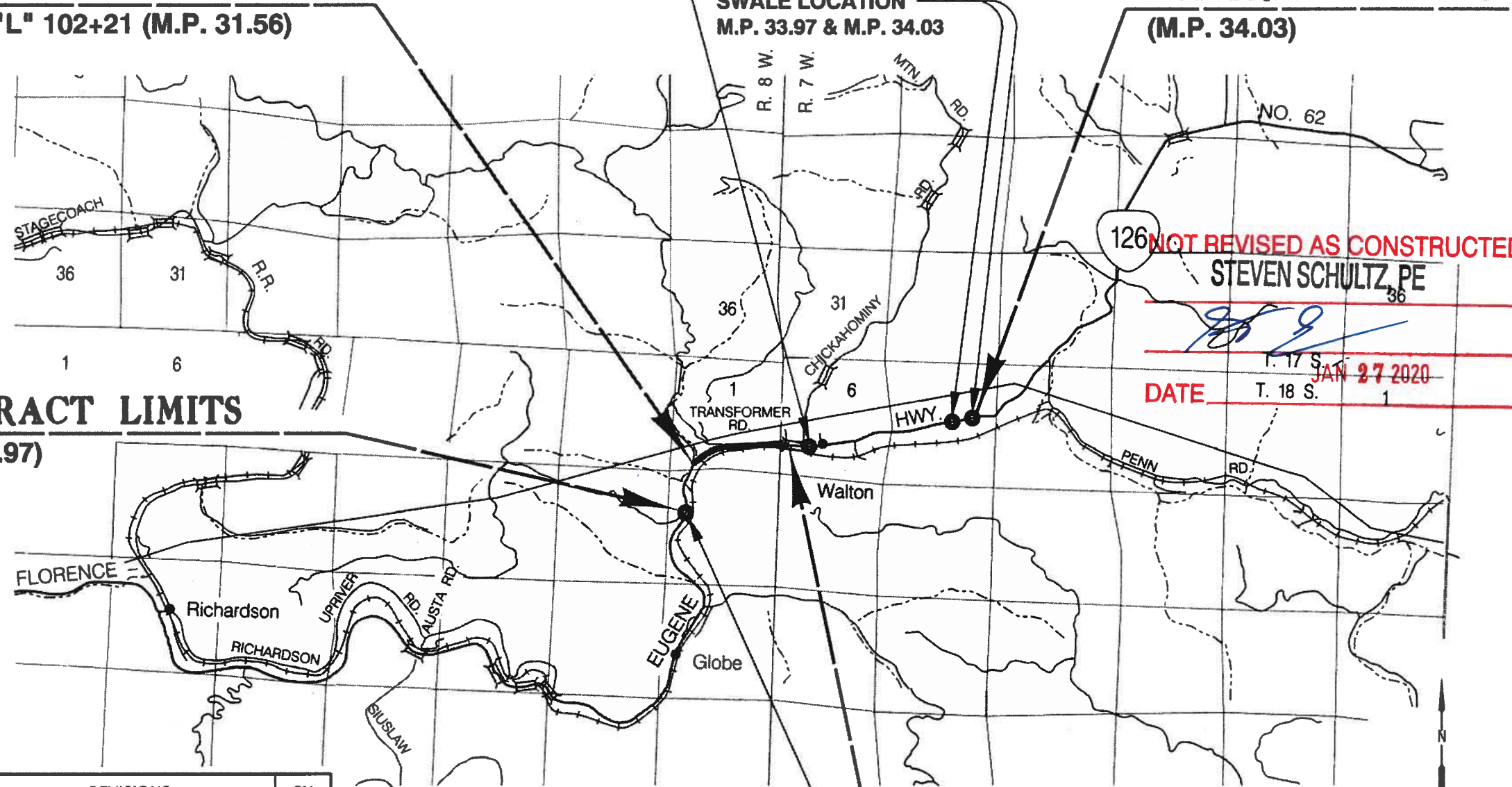
**LANE COUNTY**  
**DECEMBER 2018**

**CONTRACT LIMITS**  
**(M.P. 34.03)**

**STA. "L" 102+21 (M.P. 31.56)**

**SWALE LOCATION**  
**M.P. 32.47**

**SWALE LOCATION**  
**M.P. 33.97 & M.P. 34.03**



**CONTRACT LIMITS**  
**(M.P. 30.97)**

**NOT REVISED AS CONSTRUCTED**  
**STEVEN SCHULTZ, PE**

**DATE** T. 17 S. JAN 27 2020  
 T. 18 S. 1

**ATTENTION:**  
 Oregon Law Requires You To Follow Rules Adopted By The Oregon Utility Notification Center. Those Rules Are Set Forth In OAR 952-001-0010 Through OAR 952-001-0090. You May Obtain Copies Of The Rules By Calling The Center. (Note: The Telephone Number For The Oregon Utility Center Is (503) 232-1987.)



**OREGON TRANSPORTATION COMMISSION**

- |                    |                            |
|--------------------|----------------------------|
| Tammy Boney        | CHAIR                      |
| Bob Van Brocklin   | VICE-CHAIR                 |
| Alando Simpson     | COMMISSIONER               |
| Julle Brown        | COMMISSIONER               |
| Martin Callery     | COMMISSIONER               |
| Matthew L. Garrett | DIRECTOR OF TRANSPORTATION |

These plans were developed using ODOT design standards. Exceptions to these standards, if any, have been submitted and approved by the ODOT Chief Engineer or their delegated authority.

Approving Authority: James E. West Dec 12 2018 8:26 AM  
 Signature & date  
 James E. West - R2 Tech Center Manager  
 Print name and title  
 Steven B Cooley Dec 14 2018 11:12 AM  
 Concurrence by ODOT Chief Engineer

No.	DATE	REVISIONS	BY
1	12-13-18	Added contract limits	S.T.

**SWALE LOCATION**  
**M.P. 30.97**

**END OF PROJECT**  
**S062(041)**

**STA. "L" 145+70 (M.P. 32.36)**

T. 18 S., R. 7 & 8 W., W.M.

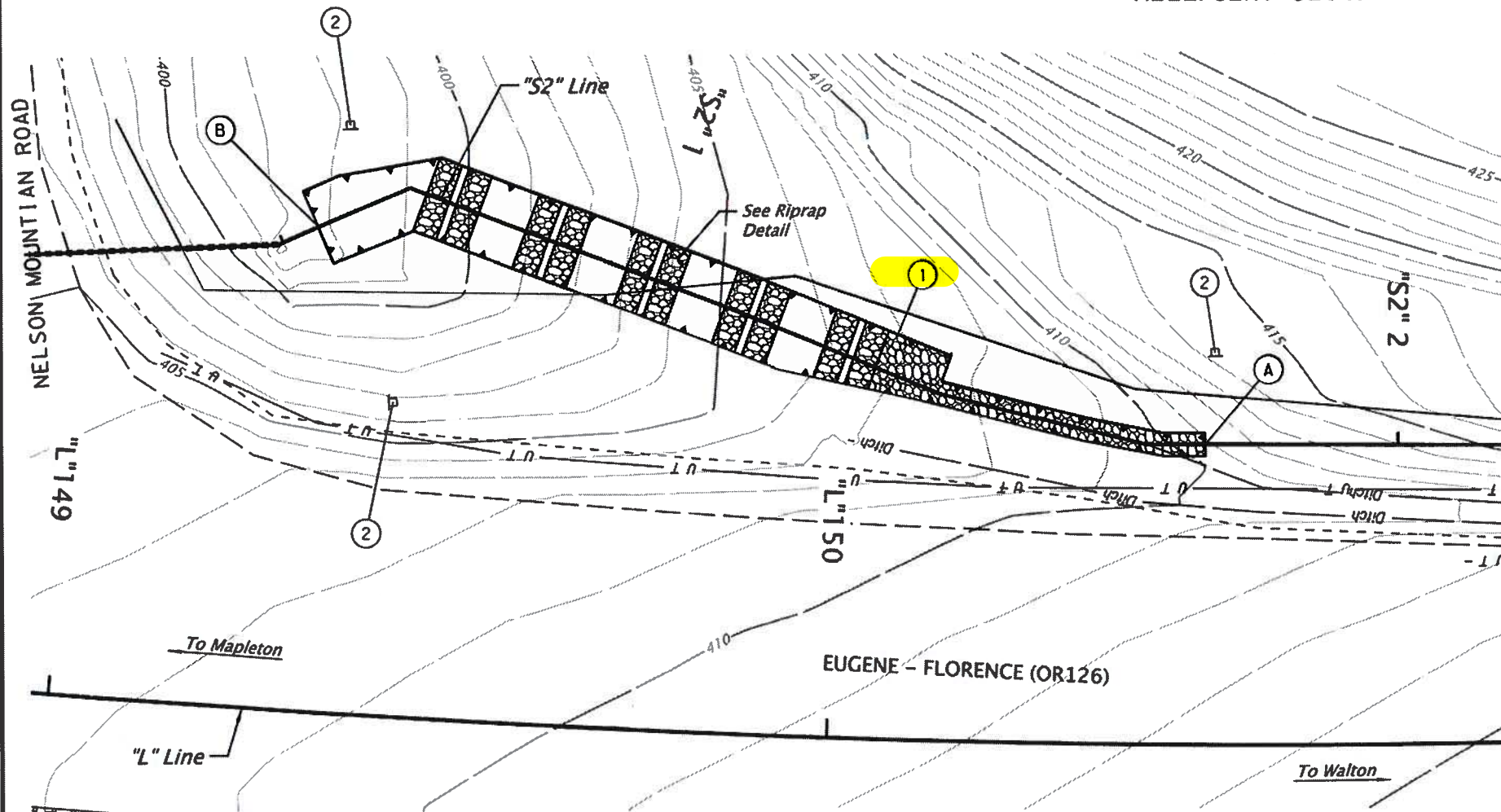


**OR126: WALKER CREEK - CHICKAHOMINY CREEK SEC.**  
**FLORENCE - EUGENE HWY.**  
**LANE COUNTY**

FEDERAL HIGHWAY ADMINISTRATION	PROJECT NUMBER	SHEET NO.
OREGON	STATE	A01

PE002619

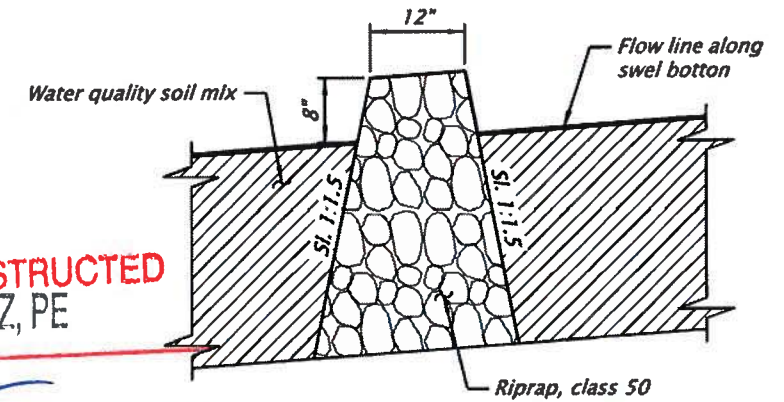
MILEPOINT 32.47



REVISED AS CONSTRUCTED  
STEVEN SCHULTZ, PE

*[Signature]*  
DATE JAN 27 2020

- ① Sta. "S2"0+55.00 to "S2"1+75.29  
Construct Water Quality Swale No. D01067  
General Excavation - 195 cu. yd.  
Water Quality Soil Mix - 67 cu. yd.  
Loose riprap (Class 50) - 20 cu. yd.
- ② Install Stormwater Facility Marker  
(See dwg. RD399)

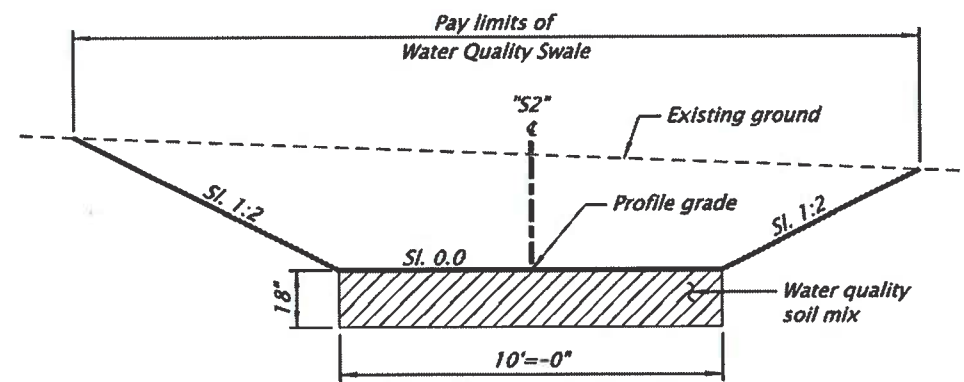


RIPRAP DETAIL

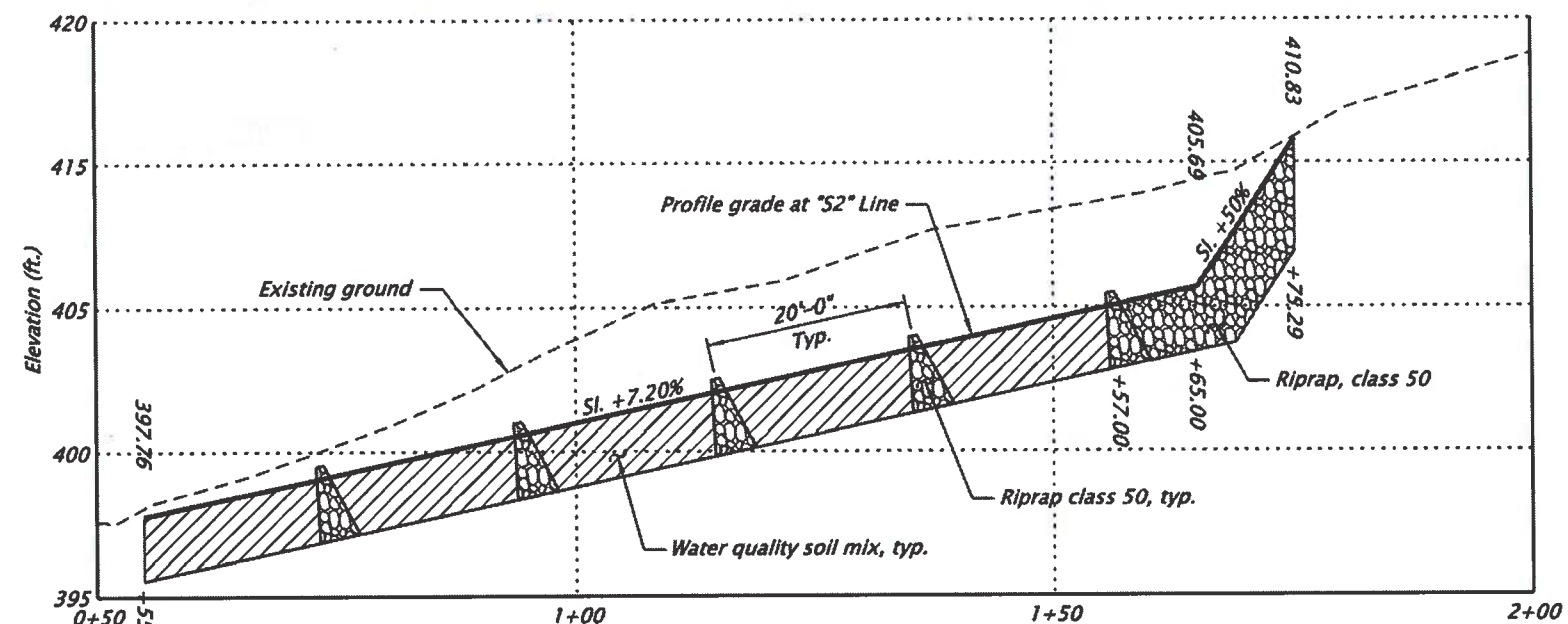
PLAN

Point	Longitude	Latitude
A	-123°35'16"	44°01'49"
B	-123°35'18"	44°01'49"

- Water Quality Pay limits



TYPICAL SECTION  
STA. "S2"0+55.00 TO STA. 1+20.00



PROFILE ALONG "S2" LINE AT MP 32.47

Elevations shown are based on North American Vertical Datum (1988)

Note:  
All slopes shown as vertical to horizontal or percentage.

REGISTERED PROFESSIONAL ENGINEER  
17,807  
Digitally Signed Oct 17 2018 4:19 PM  
OREGON  
JULY 25, 1995  
CHRIS CARMAN

HWY: 126
M.P.: 32.47
TRS: N/A
DR/TSSU NO. D01067

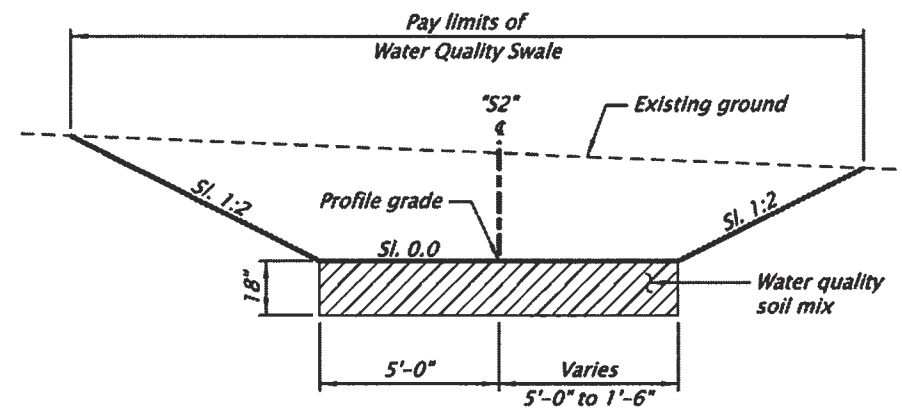
RENEWS: 12-31-2019

OREGON DEPARTMENT OF TRANSPORTATION

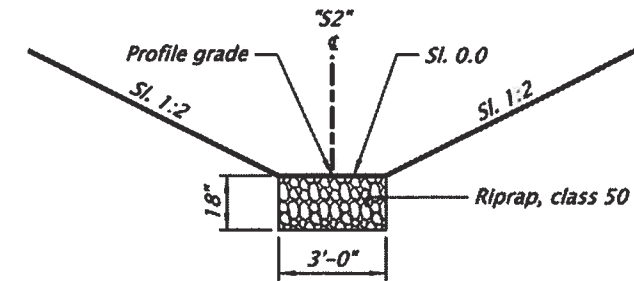
OR126: WALKER CREEK - CHICKAHOMINY CREEK SEC. FLORENCE - EUGENE HIGHWAY. LANE COUNTY

Designer: Chris Carman Reviewer: Bo Miller  
Drafter: Michael Skelton Checker: Name

STORMWATER SHEET NO. HA05



**TYPICAL SECTION**  
**STA. "S2"1+20.01 TO STA. 1+56.99**



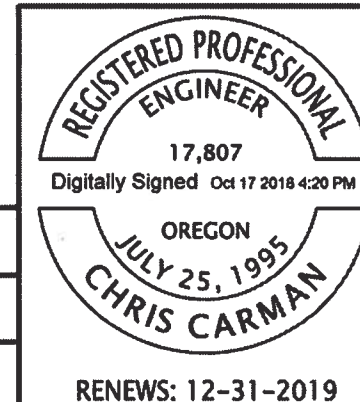
**TYPICAL SECTION**  
**STA. "S2"1+57.00 TO STA. 1+75.29**

**REVISED AS CONSTRUCTED**

**STEVEN SCHULTZ, PE**

**DATE JAN 27 2020**

*Note:*  
 All slopes shown as vertical to horizontal or percentage.

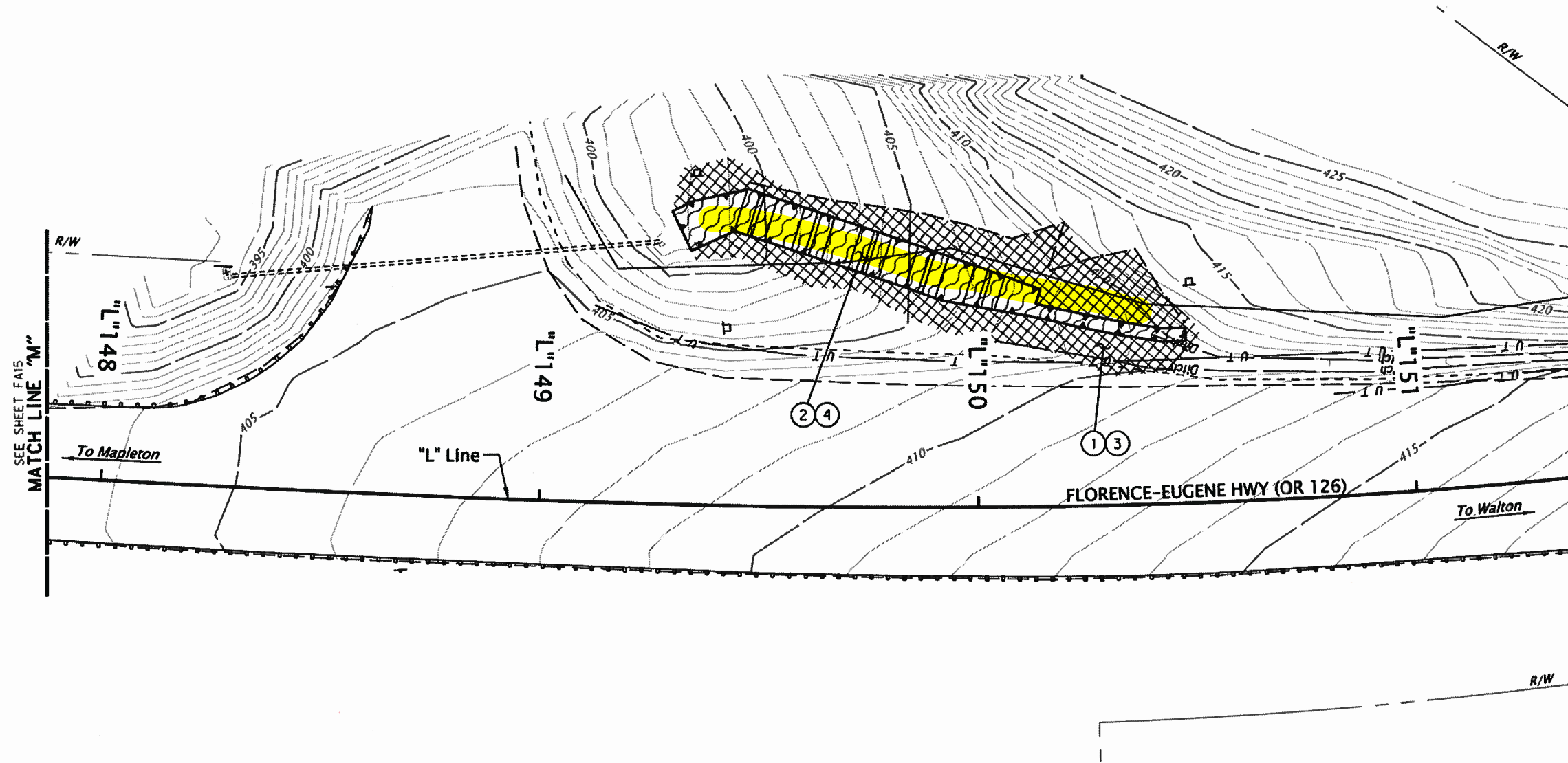


<b>OREGON DEPARTMENT OF TRANSPORTATION</b>		
<b>OR126: WALKER CREEK - CHICKAHOMINY CREEK SEC.</b> FLORENCE - EUGENE HIGHWAY. LANE COUNTY		
Designer: Chris Carman Drafter: Michael Skelton	Reviewer: Bo Miller Checker: Name	SHEET NO. <b>HA06</b>
<b>STORMWATER DETAILS</b>		

HWY: 126
M.P.: 32.47
TRS
N/A
DFV/TSSU NO.
D01067

RENEWS: 12-31-2019

FINAL ELECTRONIC DOCUMENT  
 AVAILABLE UPON REQUEST



**LEGEND AND NOTES:**

- ① *Inst. Permanent seeding mix #1*  
*At cut and fill slopes*
- ② *Inst. Permanent seeding mix #2*
- ③ *Inst. matting, Type D over*  
*Permanent seeding mix #1*
- ④ *Inst. matting, Type F over*  
*Permanent seeding mix #2 and*  
*on slopes 1V:2H or greater*
- Water Quality Biofiltration Swale*

SEE SHEET FA15  
MATCH LINE "M"

**REVISED AS CONSTRUCTED**  
**STEVEN SCHULTZ, PE**

---

[Signature]

---

DATE JAN 27 2020



**REGISTERED**  
0938  
Digital Signature Nov 8 2018 6:54 PM  
**CELINE LIVENGOOD**  
OREGON  
06/06/17  
**LANDSCAPE ARCHITECT**  
EXPIRES: 06-30-2019

<b>OREGON DEPARTMENT OF TRANSPORTATION</b>		
OR126: WALKER CREEK - CHICKAHOMINY CREEK SEC. FLORENCE - EUGENE HIGHWAY, LANE COUNTY		
Designer: Celine Livengood	Reviewer: Bob Marshall	SHEET NO. <b>FA16</b>
Drafter: Michael Skelton	Checker: N/A	
<b>ROADSIDE DEVELOPMENT PLAN</b>		

## Appendix C

### Content:

- Photos



