

OPERATION & MAINTENANCE MANUAL

Detention Pond/ Water Quality Biofiltration Swale Combo

Manual prepared: **March 2019**

DFI No. **D00956**



Figure 1: DFI No. D00956, looking Southeast

Identification

Drainage Facility ID (DFI):	D00956
Facility Type:	Detention Pond/ Water Quality Biofiltration Swale Combo
Construction Drawings:	(V-File Numbers) 49V-028
Location:	District: 4 Highway No.: 33 Mile Post: 15.93 to 15.97, left

1. Manual Purpose

The purpose of this manual is to outline inspection needs and summarize maintenance actions.

2. Facility Location

The location map below details the facility location. The highway, mile posts, side streets, access location, and stormwater flow directions are noted on the map.

Facility location type: Roadway shoulder

Flow direction: south to north

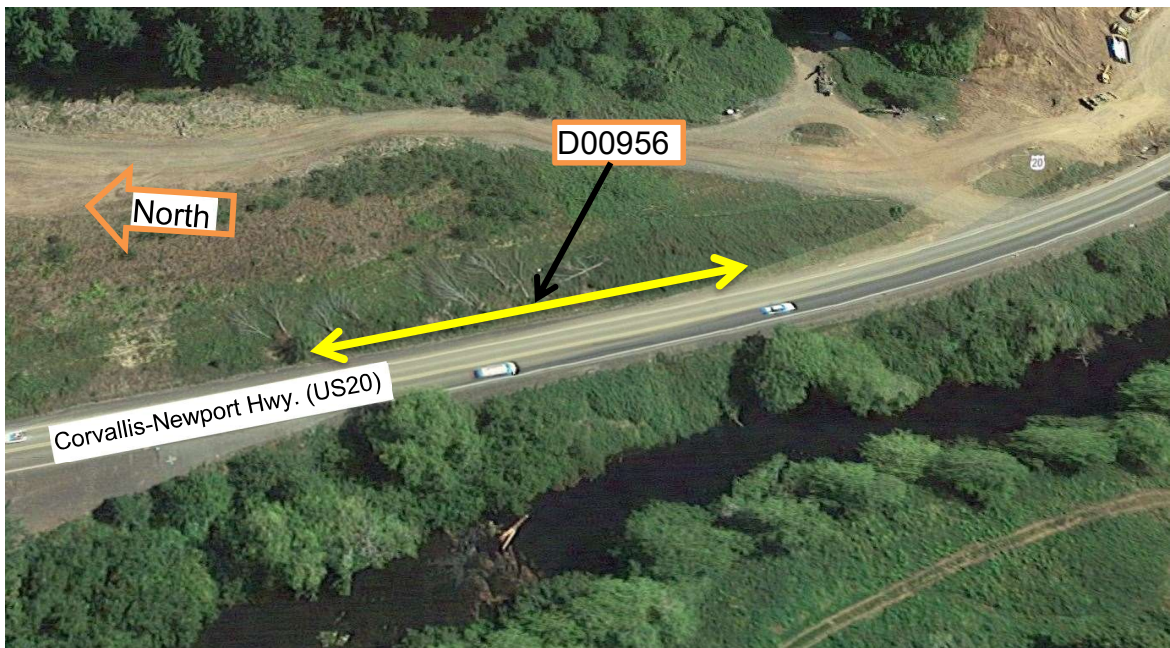


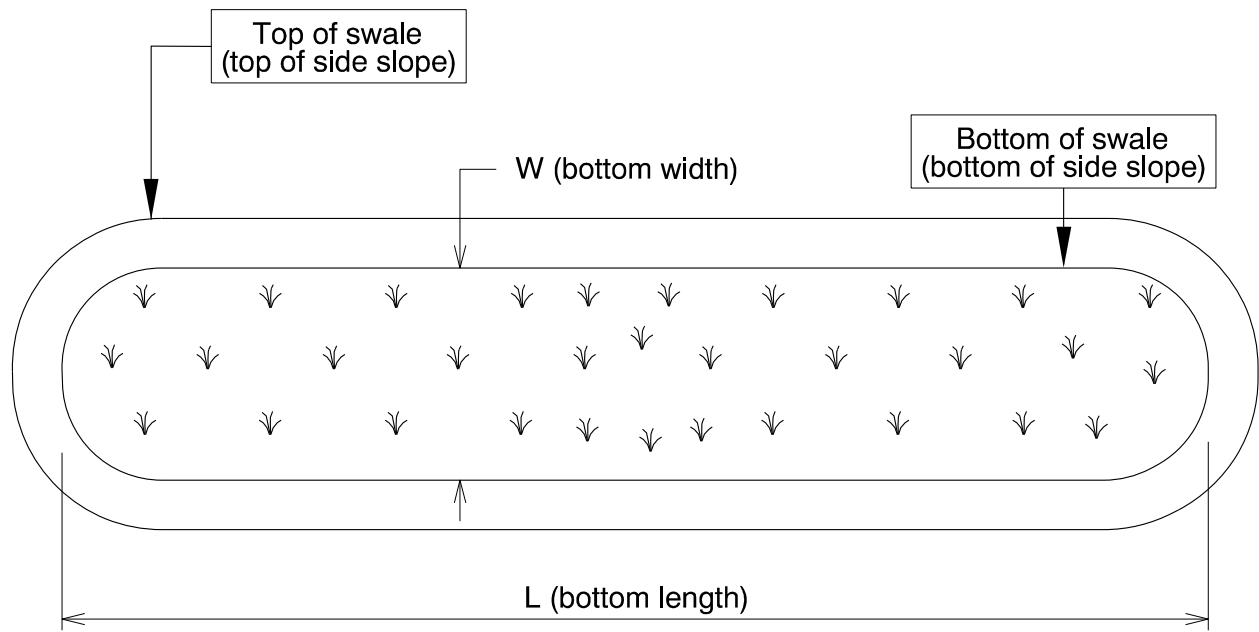
Figure 2: D00956, Facility location map

3. Facility Summary

The length and width of a swale is based on the bottom dimensions.

The bottom length and bottom width of the swale is:

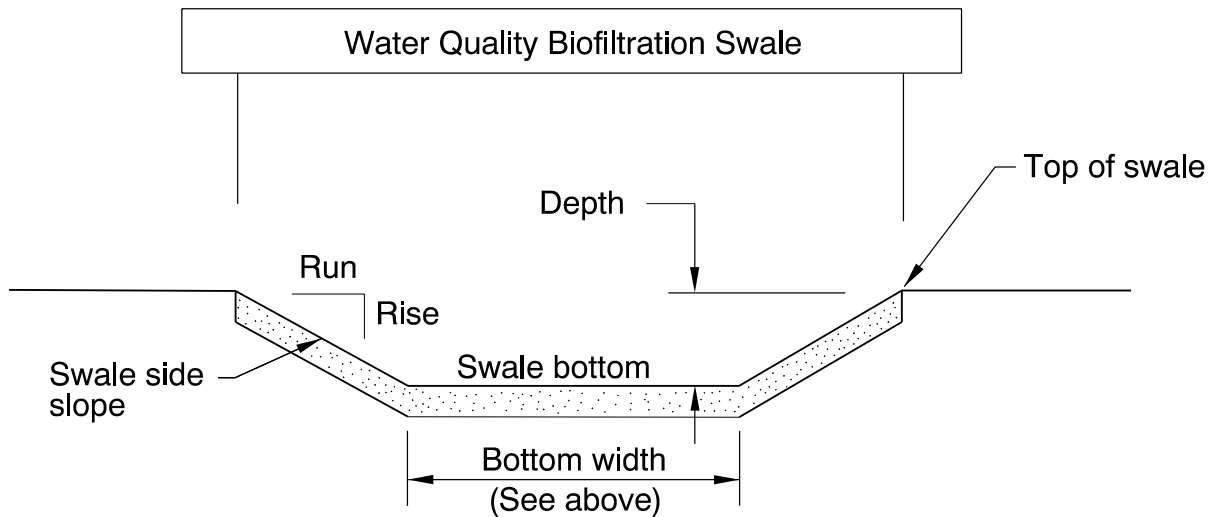
Bottom Length (feet)	Bottom Width (feet)
233	6



The depth of the swale is the vertical distance measured from the bottom of the swale to the top. The slope of the swale sides is presented by a vertical distance (rise) followed by the horizontal distance (run).

Depth and side slopes:

Depth (feet)	Rise (feet)	Run (feet)
1.5 minimum	1	4



Site Specific Information: Swale consist of two arms, one flows north to south and the other flows south to north. The swale flows are collected in a pipe where the two swale arms meet and thence flow out the pipe to the west.

4. Facility Access

Maintenance access to the facility:

<input type="checkbox"/> Roadside pad	<input checked="" type="checkbox"/> Roadside shoulder
<input type="checkbox"/> Access road with Gate	<input type="checkbox"/> Access road without Gate

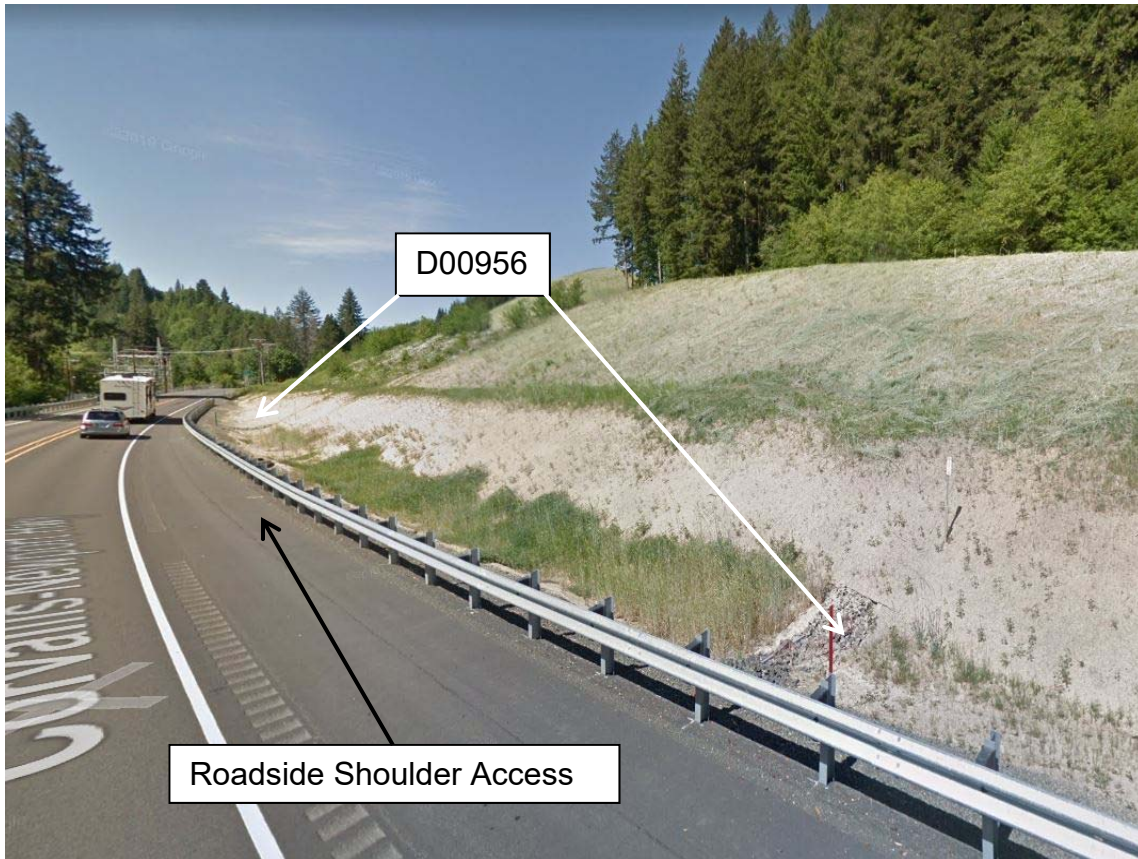


Figure 3: D00956, Looking North

5. Operational Components / Maintenance Items

Classification

This facility is classified as an:

<input checked="" type="checkbox"/> On-line Swale	<input type="checkbox"/> Off-line Swale
A swale that does not include a high flow bypass component; flow drains into and through the facility	A swale that treats low/small flows and diverts high flows using a bypass component

Bypass Component

This facility includes a high flow bypass component:

<input checked="" type="checkbox"/> No	<input type="checkbox"/> Yes
There is no bypass component. High flows drains into and through the facility	There is a bypass component. Only low/small flows drain into the swale. High flows are diverted around the swale using a bypass component

Operational Components

A swale has many components that assist with treatment, conveyance, and reducing flow velocity to minimize erosion. The components in use can vary depending if the facility was designed to operate on-line or off-line. The facility components table (**Table 1**) has been provided to highlight the applicable components for this facility. The component is in use when the box contains an “x” (e.g.).

The Standard Operation Manual for Water Quality Biofiltration Swales (implemented March 2017) outlines facility operation, typical footprint configuration, and component definitions and details. A link to the manual is attached to the feature marker in TransGIS.

<https://gis.odot.state.or.us/TransGIS/>

Operational Plan

The applicable standard operational plan for this facility is:

<input checked="" type="checkbox"/> Operational Plan A	<input type="checkbox"/> Operational Plan B	<input type="checkbox"/> Operational Plan C
An on-line swale with roadside ditches	An on-line swale with piped inlets and outlets	An off-line swale with a piped high flow bypass
A standard operational plan illustrates the general facility footprint configuration and explains the purpose of each facility component. Operational plans (A, B, C) are provided in the Standard Operation Manual.		

See Appendix A for the site specific operational plan.

Maintenance Items

Operational components marked in **Table 1** should be inspected and maintained according to Section 7. Each facility component is defined and detailed in the Standard Operation Manual using the associated ID number indicated below.

Table 1: Swale Components		ID #
Manholes/Structures		
Pre-treatment manhole	<input type="checkbox"/>	S1
Weir type flow splitter/flow splitter manhole	<input type="checkbox"/>	S2
Orifice type flow splitter/flow splitter manhole	<input type="checkbox"/>	S3
Standard manhole	<input checked="" type="checkbox"/>	S4
Swale Inlet		
Pavement sheet flow	<input checked="" type="checkbox"/>	S5
Inlet Pipe (s)	<input type="checkbox"/>	S6
Open channel inlet	<input checked="" type="checkbox"/>	S7
Riprap pad	<input checked="" type="checkbox"/>	S8
Ground Cover		
Grass bottom	<input checked="" type="checkbox"/>	S9
Grass side slopes	<input checked="" type="checkbox"/>	S10
Granular drain rock	<input type="checkbox"/>	S11
Plantings	<input type="checkbox"/>	S12
Underground Components		
Geotextile fabric	<input checked="" type="checkbox"/>	S13
Water quality mix	<input checked="" type="checkbox"/>	S14
Perforated pipe	<input type="checkbox"/>	S15
Porous pavers (access grid)	<input type="checkbox"/>	S16
Flow Spreader		
Rock basin (used at swale midpoint)	<input checked="" type="checkbox"/>	S17
Anchored board (midpoint of swale or every 50 feet along swale bottom)	<input checked="" type="checkbox"/>	S18
Other:	<input type="checkbox"/>	S19
Swale Outlet		
Catch basin with grate	<input checked="" type="checkbox"/>	S20
Outlet Pipe (s)	<input checked="" type="checkbox"/>	S21
Open channel outlet	<input type="checkbox"/>	S22
Auxiliary Outlet:	<input type="checkbox"/>	S23
Outfall Type		
Waterbody (Creek/Lake/Ocean)	<input checked="" type="checkbox"/> C <input type="checkbox"/> L <input type="checkbox"/> O	S24
Ditch	<input type="checkbox"/>	S25
Storm drain system	<input type="checkbox"/>	S26
Outfall Components		
Riprap pad	<input checked="" type="checkbox"/>	S27
Riprap bank protection	<input type="checkbox"/>	S28

6. Maintenance

Maintenance Frequency/Maintain Records

- a. Inspect annually. Preferably prior to the rainy season.
- b. Clean and maintain as necessary. Refer to Activity 125 for conditions when maintenance is needed.
- c. Keep a record of inspections, maintenance, and repairs.

Maintenance Guide/Maintenance Actions

The ODOT Routine Road Maintenance Water Quality and Habitat Guide (the *Blue Book*) outlines the standard maintenance actions for water quality facilities under Activity 125.

There are standard maintenance tables for standard ODOT designs. The maintenance tables describe the maintenance component, the defect or problem, the condition when maintenance is needed, and the recommended maintenance to correct the problem. Use the following tables to maintain ODOT swales:

- Table 1 (General Maintenance): Contains general maintenance and inspection guidelines that are applicable to all ODOT water quality facilities
- Table 3 (Maintenance of Water Quality or Biofiltration Swales): Contains maintenance information for swales

The *Blue Book* can be viewed at the following website:

http://www.oregon.gov/ODOT/Maintenance/Documents/blue_book.pdf

7. Limitations

Access grid installed:

<input checked="" type="checkbox"/> No	<input type="checkbox"/> Yes

Swales are designed to allow equipment access along the bottom. If an access grid is **NOT** installed, vehicles entering the swale can create depressions (tire ruts), damage vegetation, and damage structural components (e.g. flow spreaders). These conditions may result in poor treatment and drainage performance.

Equipment wheels should be kept on the tops and side slopes. Mower arms may be run along the swale bottom.

8. Waste Material Handling

Material removed from the facility is defined as waste by the Department of Environmental Quality (DEQ). Refer to the roadwaste section of the ODOT Maintenance Yard Environmental Management System (EMS) Policy and Procedures Manual for disposal options:

http://www.oregon.gov/ODOT/Maintenance/Documents/ems_manual.pdf

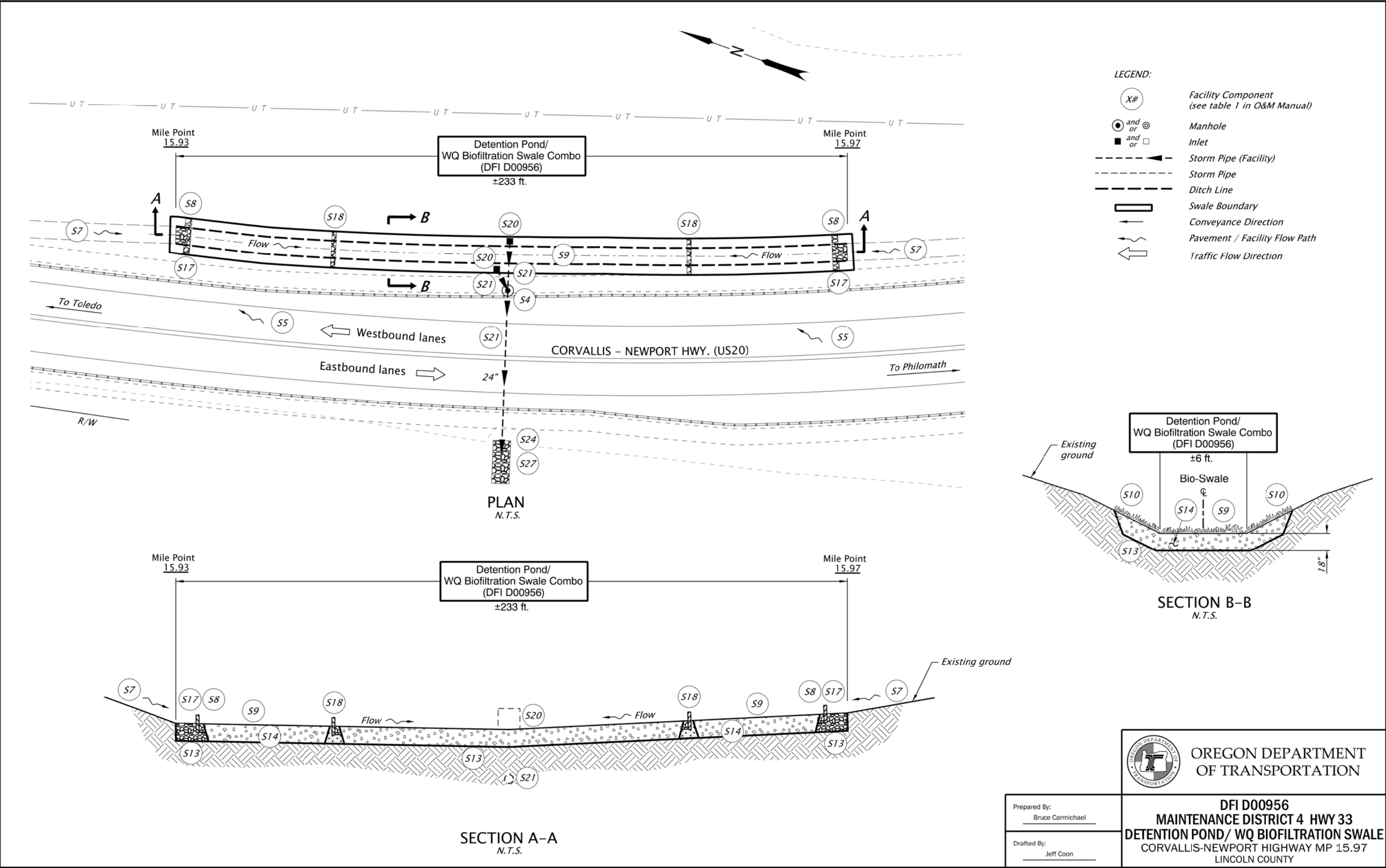
Contact any of the following for more detailed information about management of waste materials found on site:

ODOT Clean Water Unit	(503) 986-3008
ODOT Statewide Hazmat Coordinator	(503) 667-7442
ODOT Region 1 Hazmat Coordinator	(503) 731-8290
ODOT Region 2 Hazmat Coordinator	(503) 986-2647
ODOT Region 3 Hazmat Coordinator	(541) 957-3594
ODOT Region 4 Hazmat Coordinator	(541) 388-6186
ODOT Region 5 Hazmat Coordinator	(541) 963-1590
ODEQ Northwest Region Office	(503) 229-5263

A Appendix A – Site Specific Operational Plan

Contents:

Operational Plan: DFI D00956



- LEGEND:**
- (X#) Facility Component (see table 1 in O&M Manual)
 - and/or ⊙ Manhole
 - and/or □ Inlet
 - Storm Pipe (Facility)
 - - - Storm Pipe
 - - - Ditch Line
 - ▭ Swale Boundary
 - Conveyance Direction
 - ↔ Pavement / Facility Flow Path
 - ← Traffic Flow Direction

PLAN
N.T.S.

SECTION A-A
N.T.S.

SECTION B-B
N.T.S.



Prepared By:
Bruce Carmichael

Drafted By:
Jeff Coon

DFI D00956
MAINTENANCE DISTRICT 4 HWY 33
DETENTION POND/ WQ BIOFILTRATION SWALE
CORVALLIS-NEWPORT HIGHWAY MP 15.97
LINCOLN COUNTY

B Appendix B – Project Contract Plans

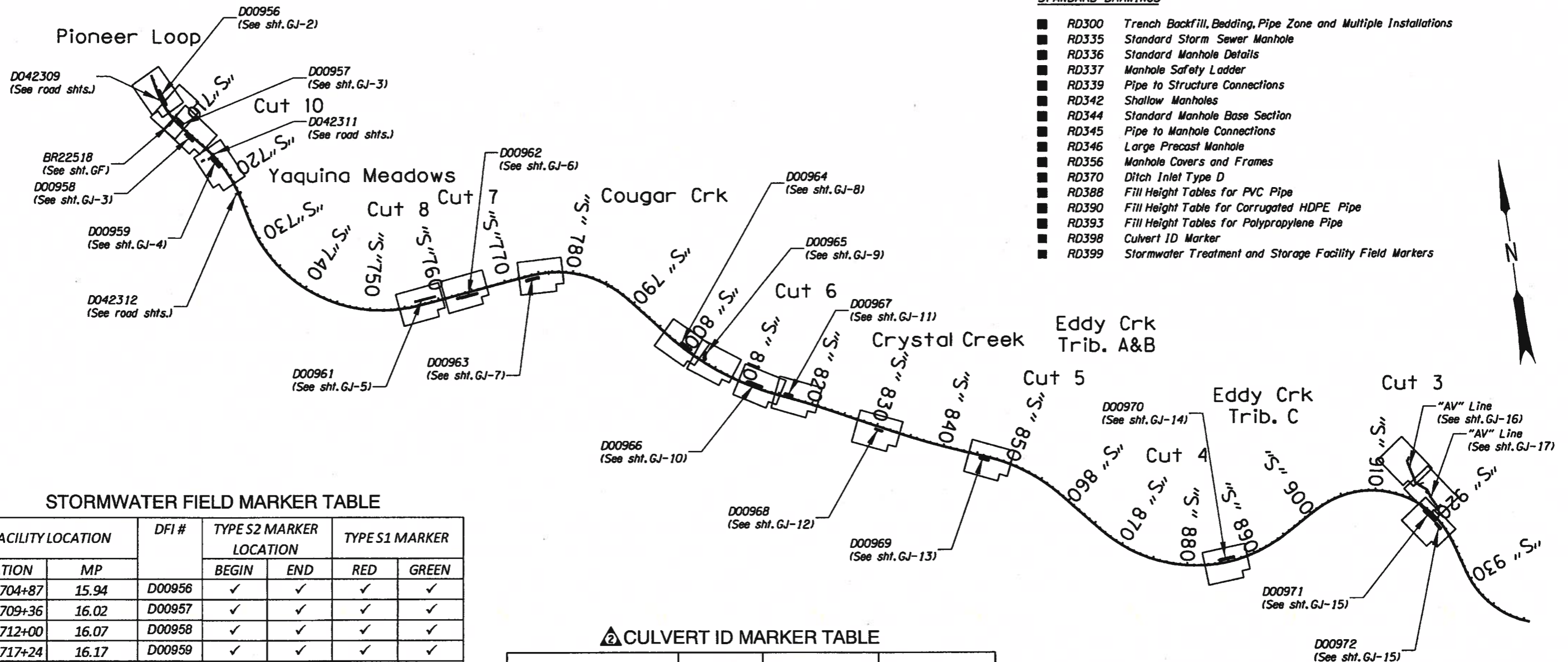
Contents:

Site Specific Subset of Project Contract Plan 49V-028

HYDRAULIC FEATURE LOCATION INDEX

STANDARD DRAWINGS

- RD300 Trench Backfill, Bedding, Pipe Zone and Multiple Installations
- RD335 Standard Storm Sewer Manhole
- RD336 Standard Manhole Details
- RD337 Manhole Safety Ladder
- RD339 Pipe to Structure Connections
- RD342 Shallow Manholes
- RD344 Standard Manhole Base Section
- RD345 Pipe to Manhole Connections
- RD346 Large Precast Manhole
- RD356 Manhole Covers and Frames
- RD370 Ditch Inlet Type D
- RD388 Fill Height Tables for PVC Pipe
- RD390 Fill Height Table for Corrugated HDPE Pipe
- RD393 Fill Height Tables for Polypropylene Pipe
- RD398 Culvert ID Marker
- RD399 Stormwater Treatment and Storage Facility Field Markers



STORMWATER FIELD MARKER TABLE

FACILITY LOCATION		DFI #	TYPE S2 MARKER LOCATION		TYPE S1 MARKER	
STATION	MP		BEGIN	END	RED	GREEN
"S" 704+87	15.94	D00956	✓	✓	✓	✓
"S" 709+36	16.02	D00957	✓	✓	✓	✓
"S" 712+00	16.07	D00958	✓	✓	✓	✓
"S" 717+24	16.17	D00959	✓	✓	✓	✓
"S" 760+00	16.98	D00961	✓	✓	✓	✓
"S" 764+19	17.06	D00962	✓	✓	✓	✓
"S" 773+99	17.25	D00963	✓	✓	✓	✓
"S" 799+80	17.74	D00964	✓	✓	✓	✓
"S" 802+93	17.80	D00965	✓	✓	✓	✓
"S" 811+32	17.96	D00966	✓	✓	✓	✓
"S" 816+41	18.05	D00967	✓	✓	✓	✓
"S" 830+46	18.32	D00968	✓	✓	✓	✓
"S" 846+20	18.62	D00969	✓	✓	✓	✓
"S" 885+81	19.37	D00970	✓	✓	✓	✓
"S" 918+99	19.99	D00971	✓	✓	✓	✓
"S" 920+98	20.03	D00972	✓	✓	✓	✓

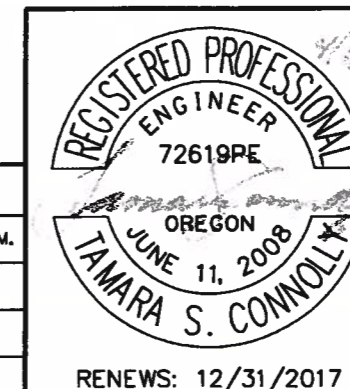
See Drg. No. RD399 for facility marker details.

CULVERT ID MARKER TABLE

FACILITY LOCATION		DFI #	TYPE 1 MARKER		TYPE 2 MARKER	
STATION	MP		INLET	INLET & OUTLET	INLET	INLET & OUTLET
"S" 704+86	15.94	D042309	✓		✓	
"S" 708+40	16.01	BR22518	✓		✓	
"S" 716+20	16.15	D042311	✓		✓	
"S" 722+85	16.28	D042312	✓		✓	

See Drg. No. RD398 for culvert marker details.

No.	DATE	REVISIONS	BY
2	04-04-16	Revised Culvert ID marker table	M.C.M.



OREGON DEPARTMENT OF TRANSPORTATION

Otak Inc. 808 SW Third Avenue, Suite 300
Portland, Oregon 97204
Phone: (503)287-8825 Fax: (503)415-2304

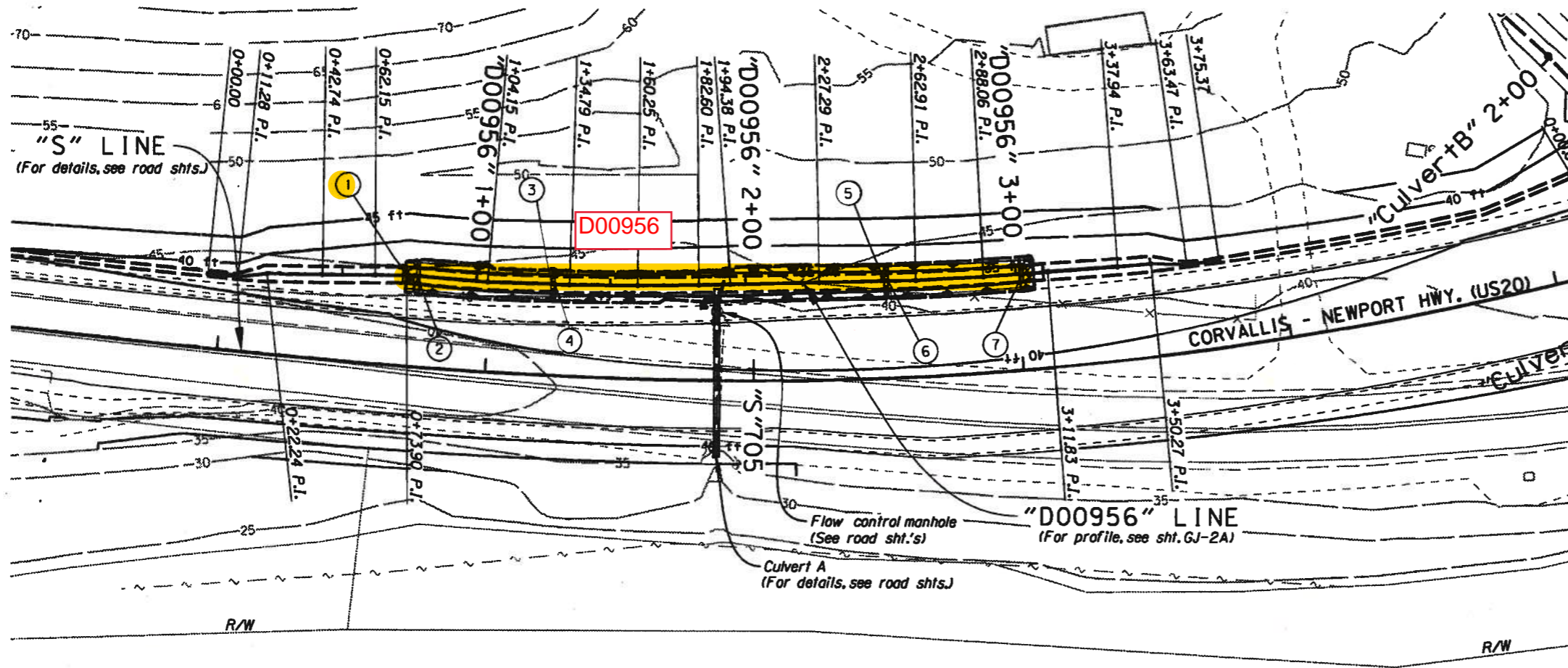
FFO-US20 PME: UPRR - EDDYVILLE (PHASE 4) SECTION
CORVALLIS - NEWPORT HIGHWAY
LINCOLN COUNTY

Design Team Leader - Melanie McCandless
Designed By - Jeremy Tamargo
Drafted By - Sadie Reiter

WATER QUALITY PLAN LAYOUT SHEET

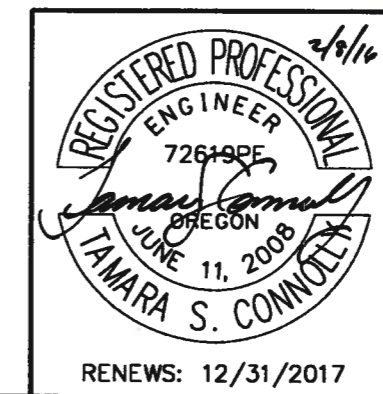
SHEET NO. GJ

D00956



- GENERAL NOTES:**
1. Sta. "S" 703+67.92, 33.85' L.I.
Begin Sta. "D00956" 0+73.77
 2. Sta. "D00956" 0+73.8 to Sta. "D00956" 3+06.5
Const. water quality swale, see table this sht.

"D00956" Line Construction Table			
#	"D00956" Line Sta.	"D00956" Line Sta.	Const. (For details, see shts. GJ-20 thru GJ-25)
①	0+73.8	0+77.8	Energy dissipator
②	0+77.8	1+27.8	Water quality section
③	1+27.8	1+29.3	Flow Spreader
④	1+29.3	2+51.0	Water quality section
⑤	2+51.0	2+52.5	Flow spreader
⑥	2+52.5	3+02.5	Water quality section
⑦	3+02.5	3+06.5	Energy dissipator

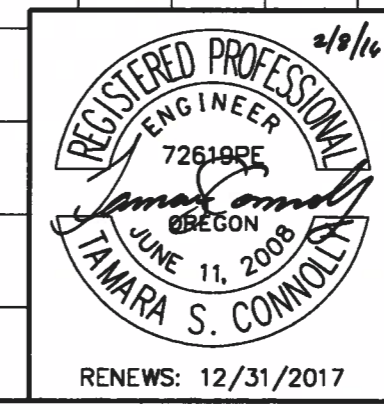
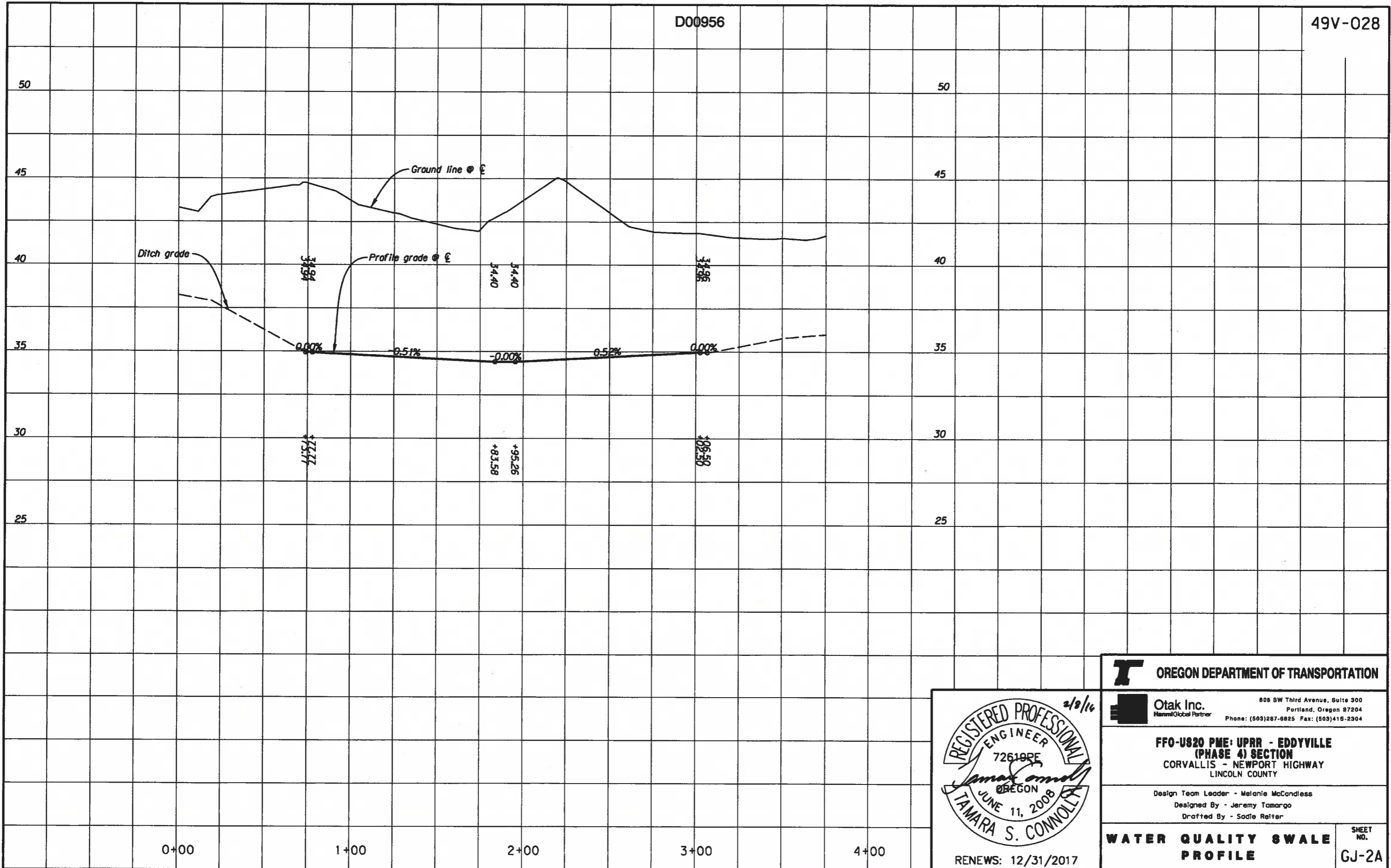


RENEWS: 12/31/2017

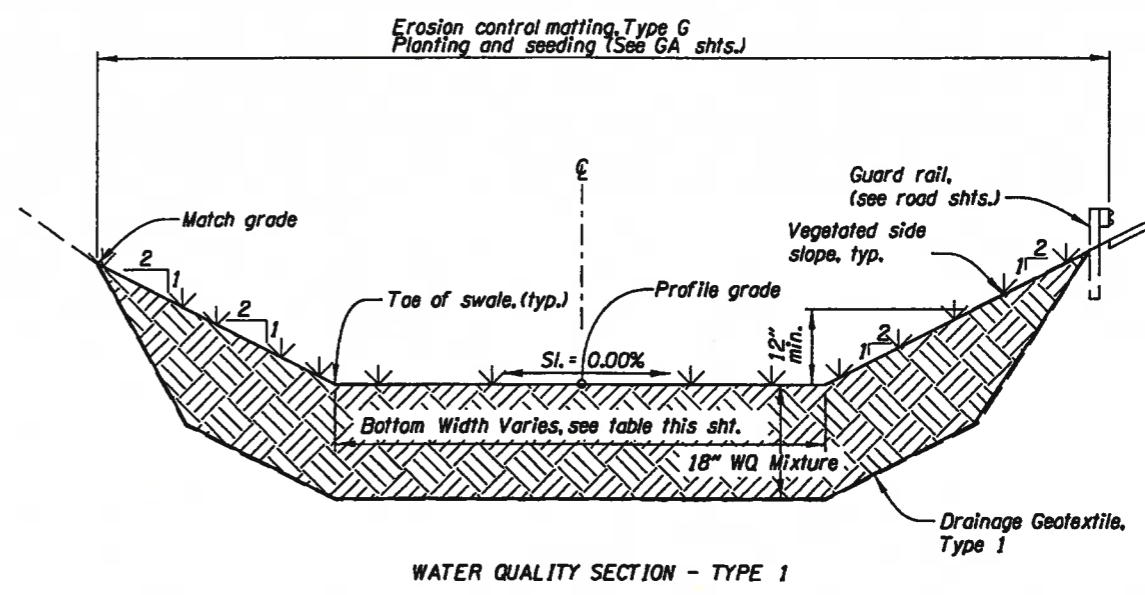
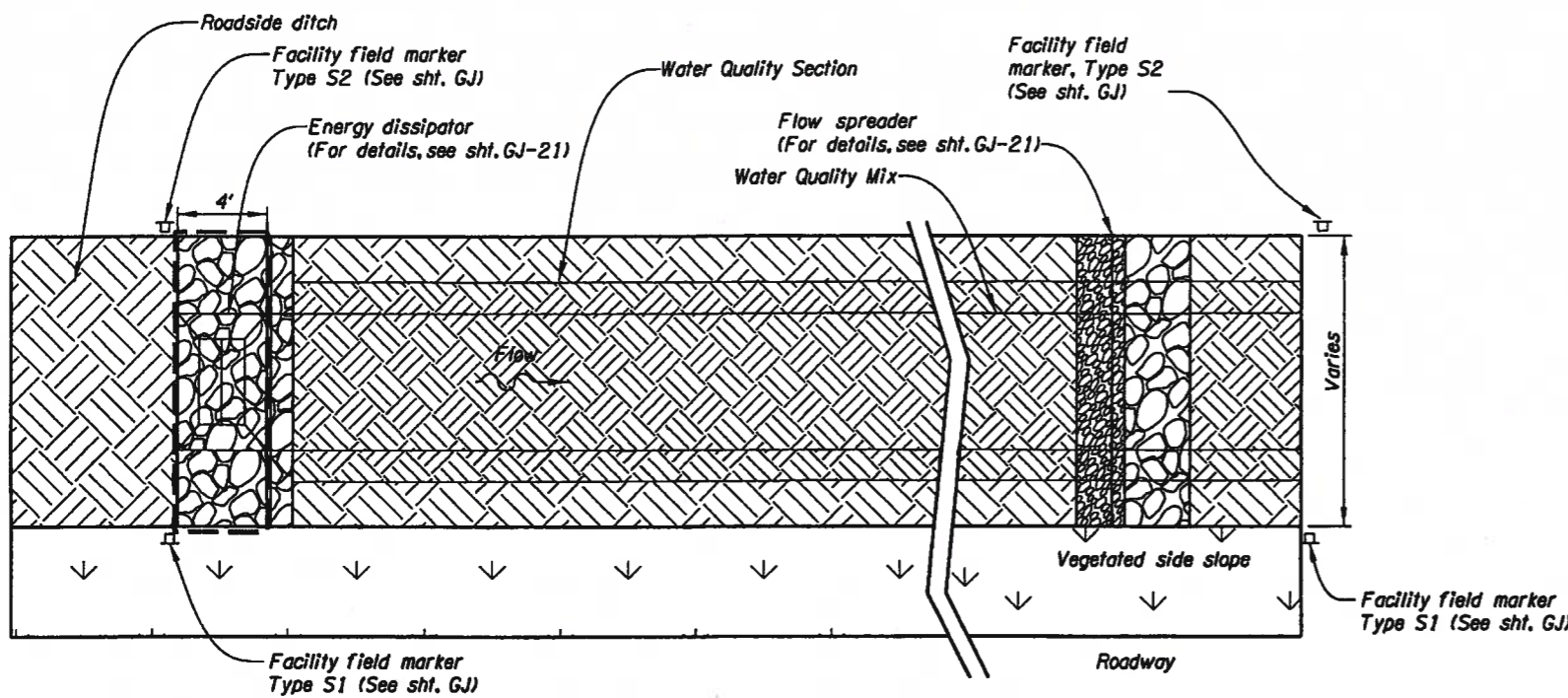
OREGON DEPARTMENT OF TRANSPORTATION	
Otak Inc. Human/Global Partner	808 SW Third Avenue, Suite 300 Portland, Oregon 97204 Phone: (503)287-8825 Fax: (503)415-2304
FFO-US20 PME: UPRR - EDDYVILLE (PHASE 4) SECTION CORVALLIS - NEWPORT HIGHWAY LINCOLN COUNTY	
Design Team Leader - Melanie McCandless Designed By - Jeremy Tamargo Drafted By - Sadie Reiter	
WATER QUALITY SWALE PLAN	SHEET NO. GJ-2

D00956

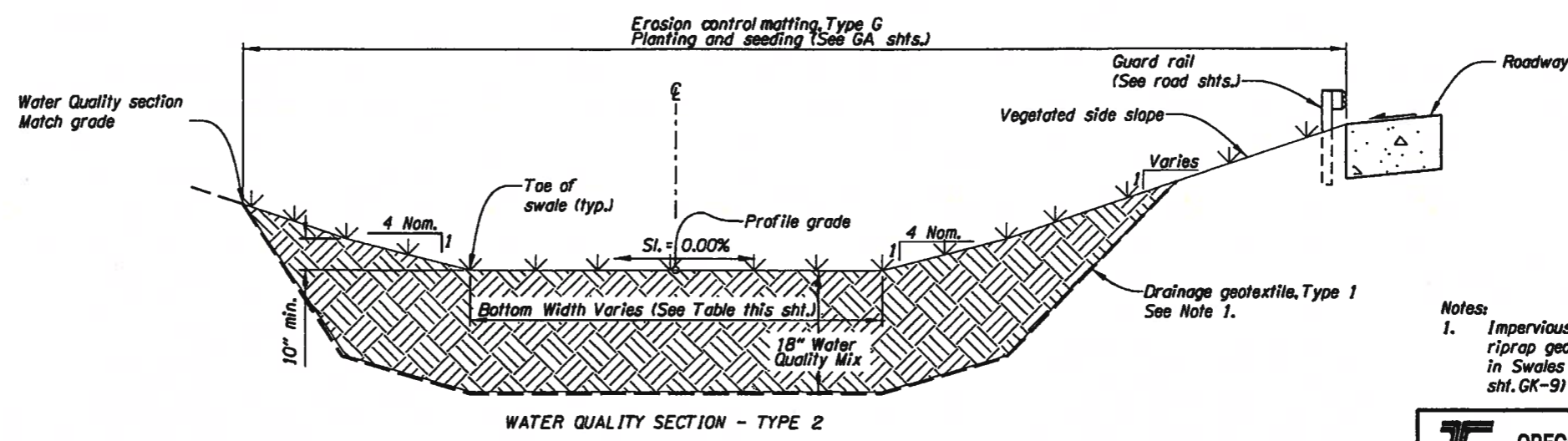
49V-028



OREGON DEPARTMENT OF TRANSPORTATION	
Otak Inc. Hamm Global Partner	608 SW Third Avenue, Suite 300 Portland, Oregon 97204 Phone: (503)287-6825 Fax: (503)416-2304
FFO-US20 PME: UPRR - EDDYVILLE (PHASE 4) SECTION CORVALLIS - NEWPORT HIGHWAY LINCOLN COUNTY	
Design Team Leader - Melanie McCandless Designed By - Jeremy Tamargo Drafted By - Sadie Reiter	
WATER QUALITY SWALE PROFILE	SHEET NO. GJ-2A

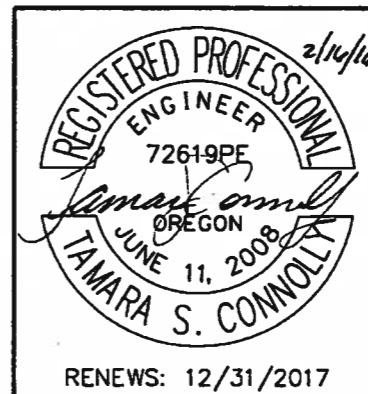


SWALE DATA TABLE		
SWALE	BOTTOM WIDTH (FT)	TYPE
D00955	6.0	1
D00956	6.0	1
D00957	6.0	1
D00958	6.0	1
D00959	8.0	1
D00962	6.0	2
D00963	6.0	2
D00964	6.0	2
D00965	6.0	2
D00966	8.0	2
D00967	6.0	2
D00968	4.0	2
D00969	6.0	2
D00970	8.0	2
D00971	10.0	2
D00972	6.0	2



WATER QUALITY SWALE DETAIL
Not to Scale

Notes:
1. Impervious liner shall replace riprap geotextile and drainage geotextile in Swales D00965 and D00970. (For details, see shf. GK-9)



OREGON DEPARTMENT OF TRANSPORTATION

Otak Inc. 808 SW Third Avenue, Suite 300
Portland, Oregon 97204
Phone: (503)287-8825 Fax: (503)415-2304

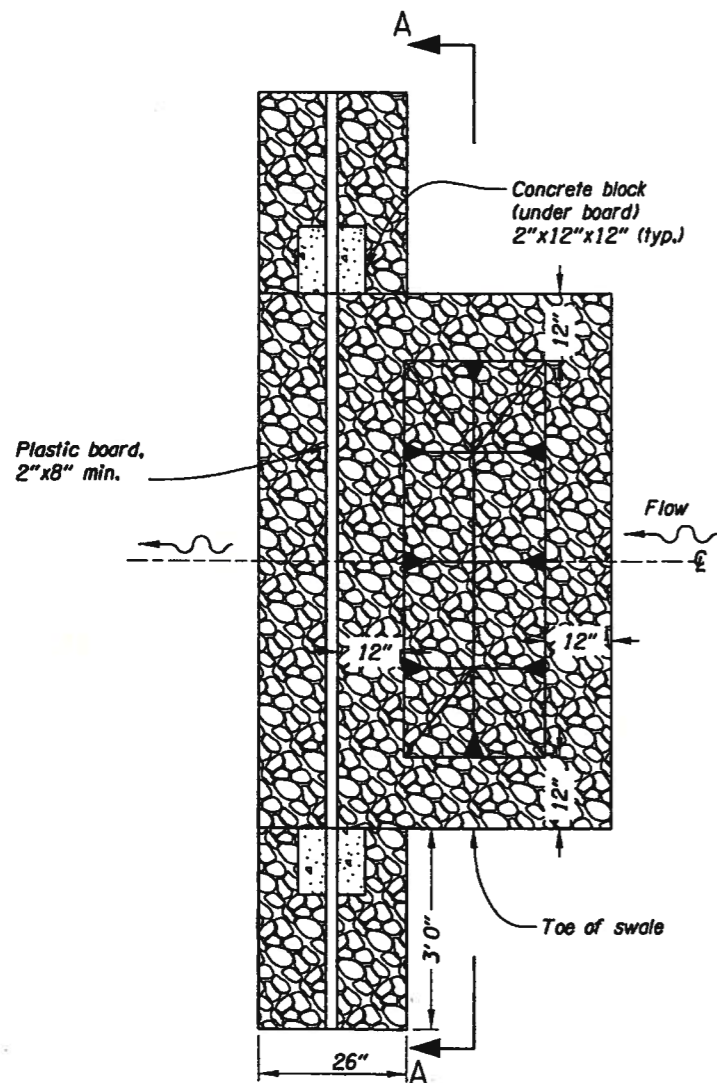
FFO-US20 PME: UPRR - EDDYVILLE (PHASE 4) SECTION
CORVALLIS - NEWPORT HIGHWAY
LINCOLN COUNTY

Design Team Leader - Melanie McCandless
Designed By - Tammi Connolly
Drafted By - Sadie Reiter

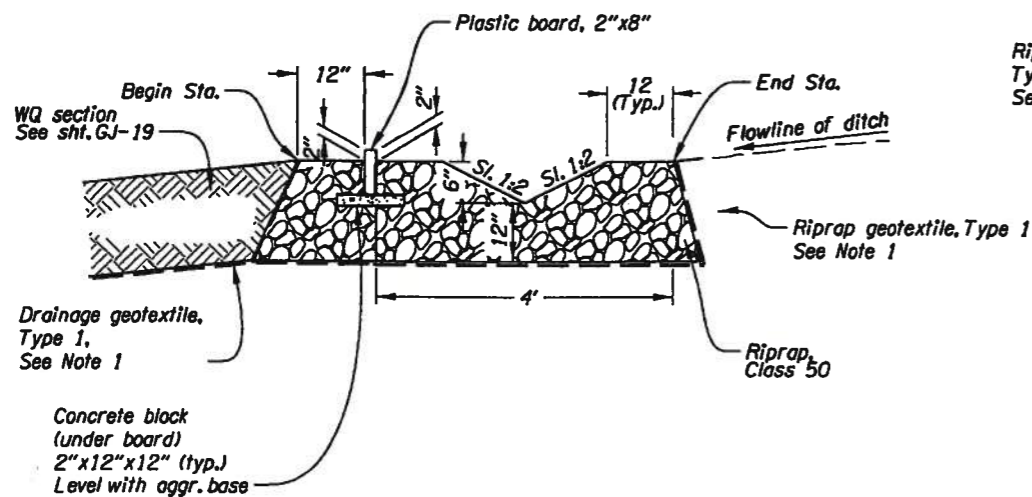
WATER QUALITY SWALE DETAILS

SHEET NO. GJ-20

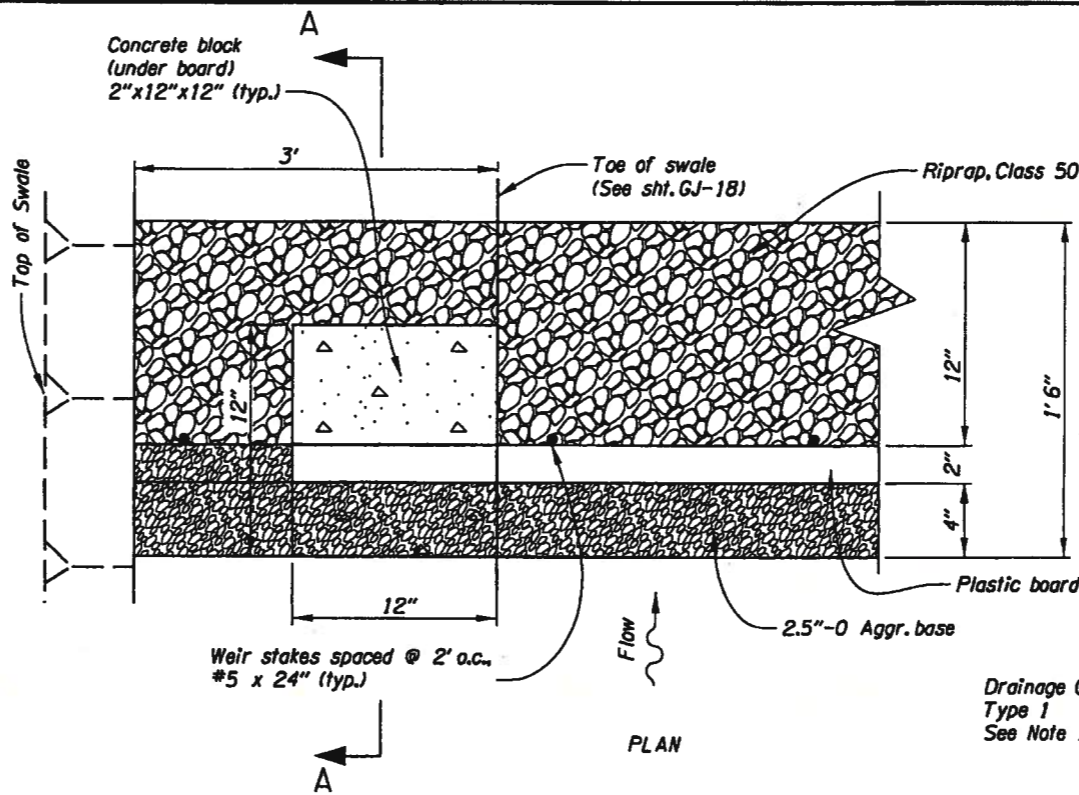
49V-028



PLAN

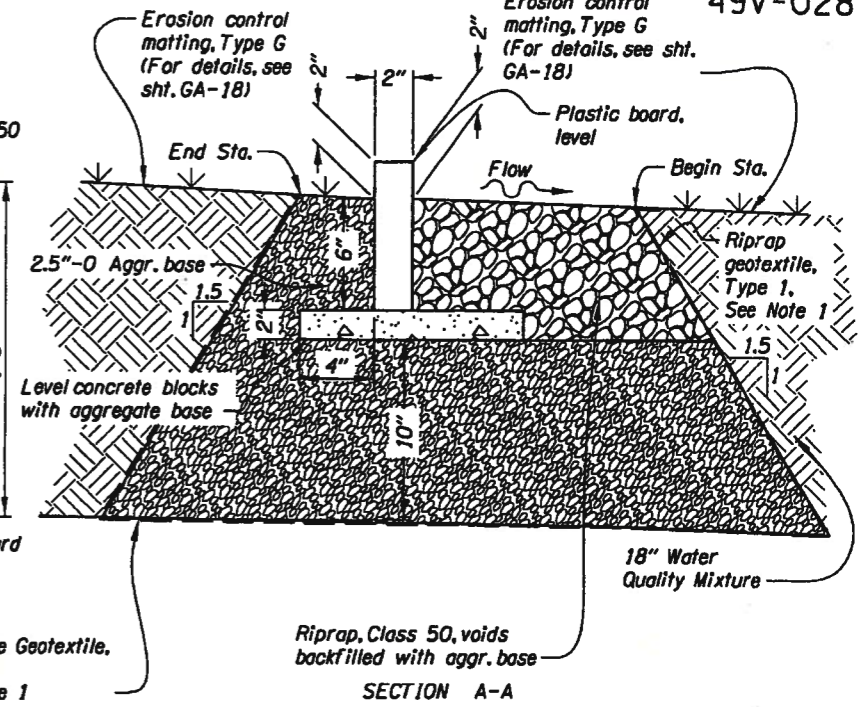


PROFILE

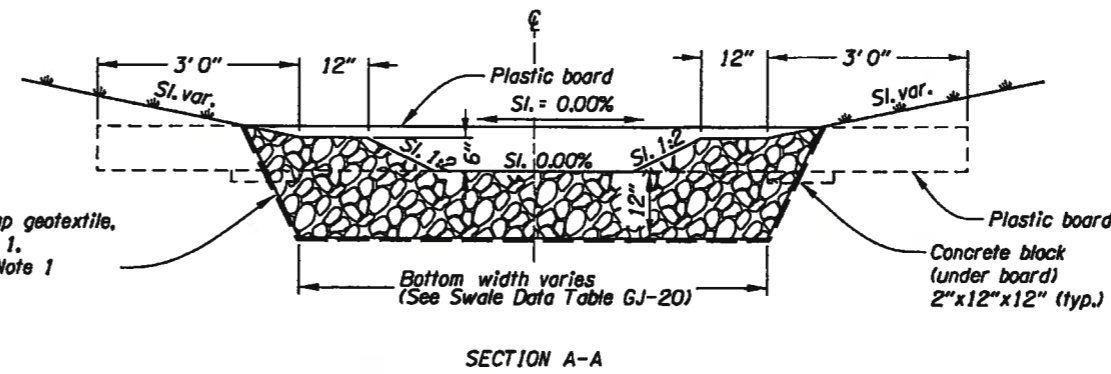


PLAN

FLOW SPREADER

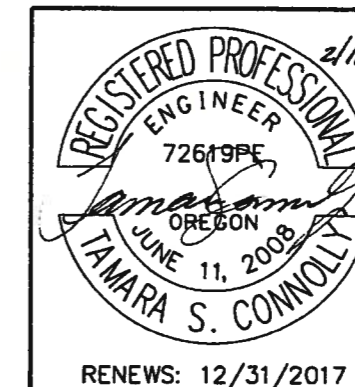


- Notes:
1. Impervious liner shall replace riprap geotextile and drainage geotextile in Swales D00965 and D00970. See sht. GK-9.

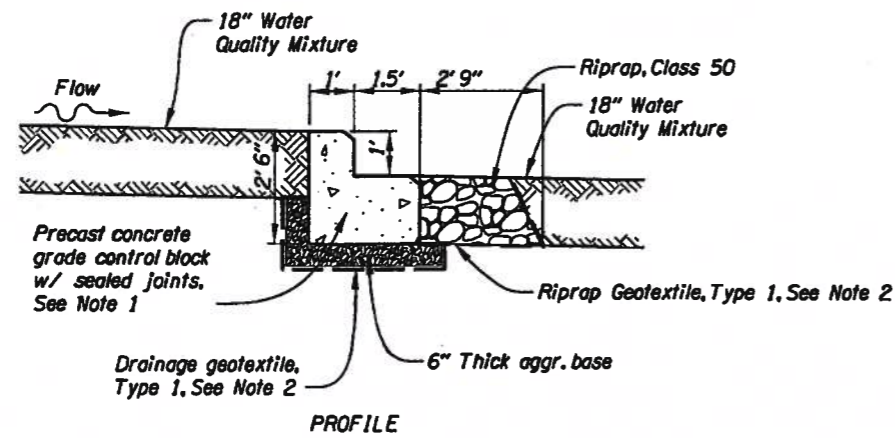
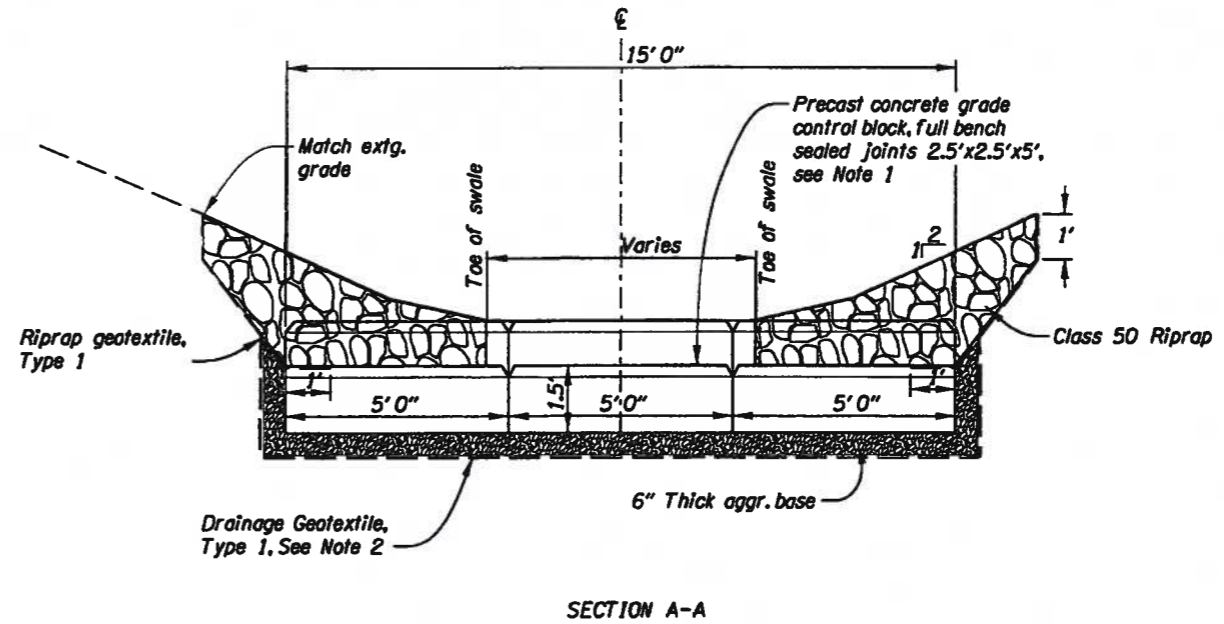
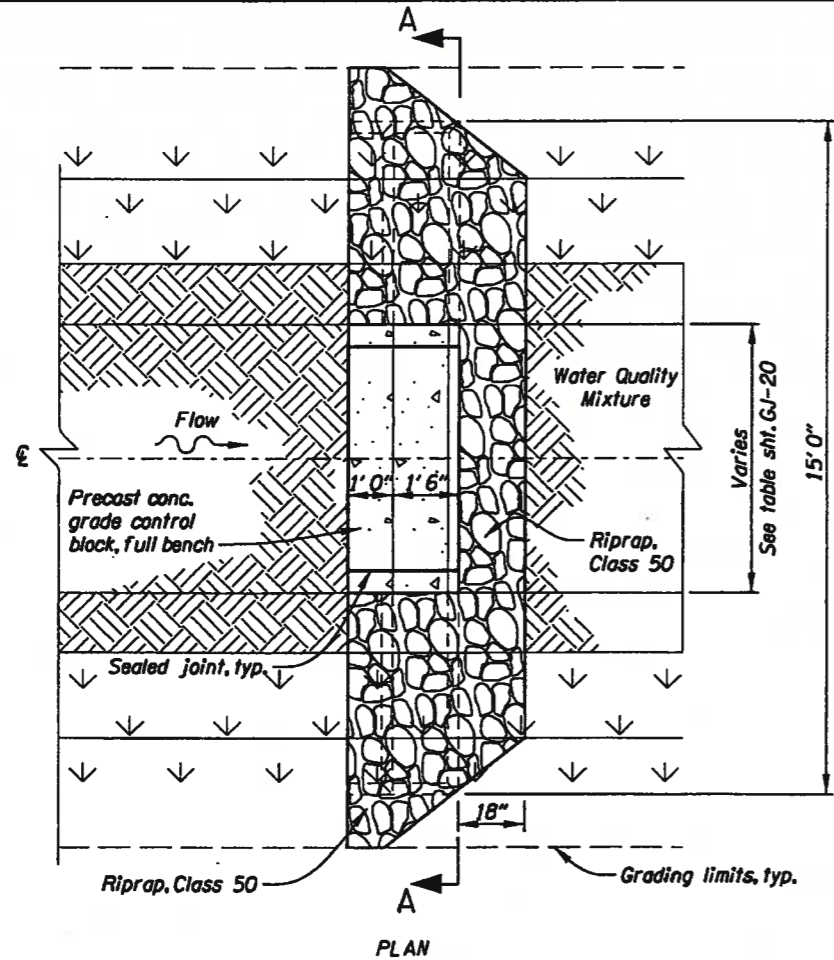


- Notes:
1. Impervious liner shall replace riprap geotextile and drainage geotextile in Swales D00965 and D00970. See sht. GK-9.

ENERGY DISSIPATOR
Not to Scale

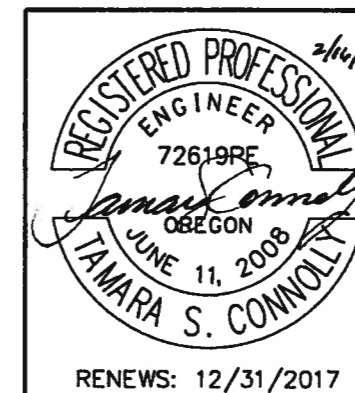


<p>OREGON DEPARTMENT OF TRANSPORTATION</p>	
<p>Otak Inc. 808 SW Third Avenue, Suite 300 Portland, Oregon 97204 Phone: (503)267-6825 Fax: (503)415-2304</p>	<p>FFO-US20 PME: UPRR - EDDYVILLE (PHASE 4) SECTION CORVALLIS - NEWPORT HIGHWAY LINCOLN COUNTY</p>
<p>Design Team Leader - Melanie McCandless Designed By - Tammi Connolly Drafted By - Sadie Reiter</p>	
<p>WATER QUALITY SWALE DETAILS</p>	<p>SHEET NO. GJ-21</p>

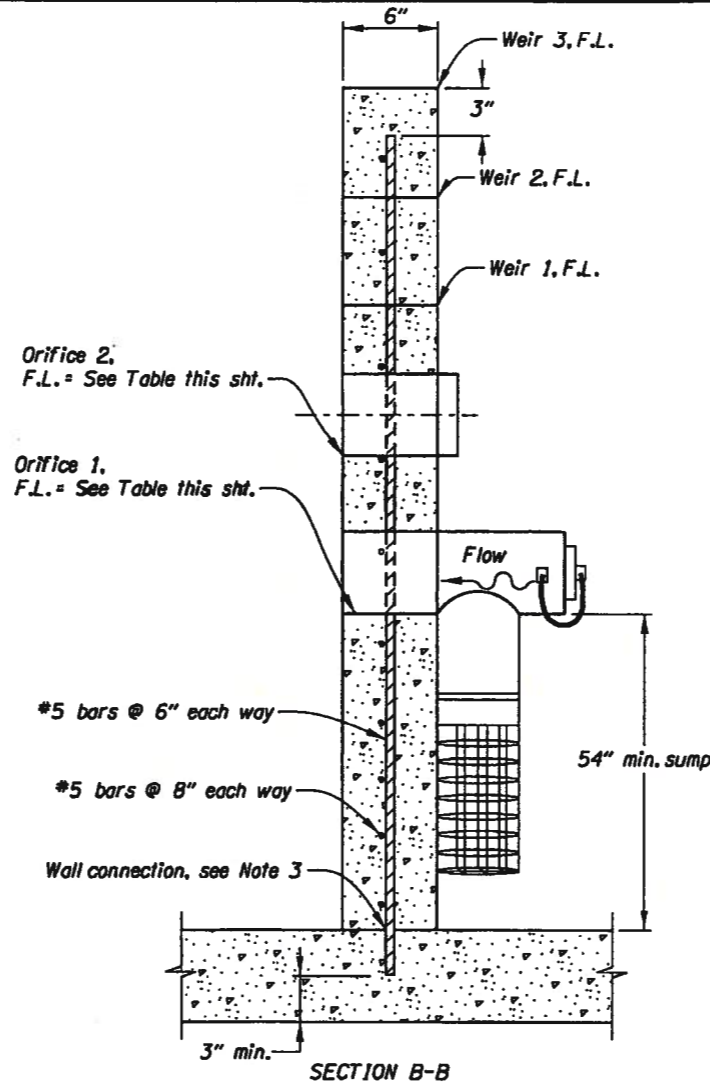
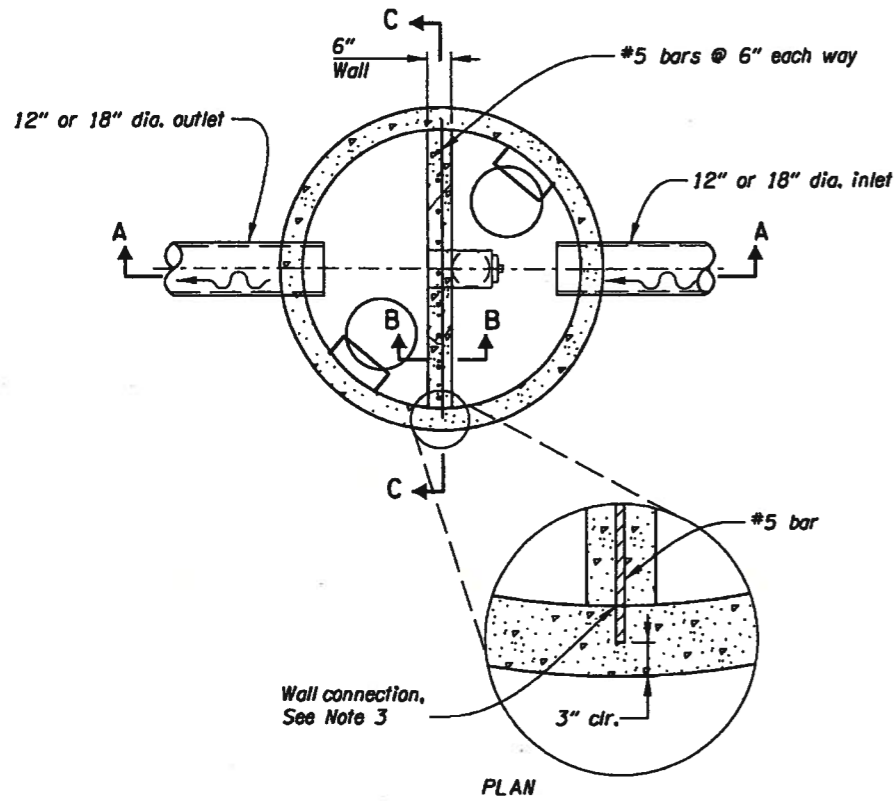


- Notes:
1. Seal joints between precast concrete grade control blocks with Non-Shrink Grout meeting the requirements of Standard Specification Section 02440.
 2. Impervious liner shall replace riprap geotextile and drainage geotextile in Swales D00965 and D00970. See sht. GK-9.

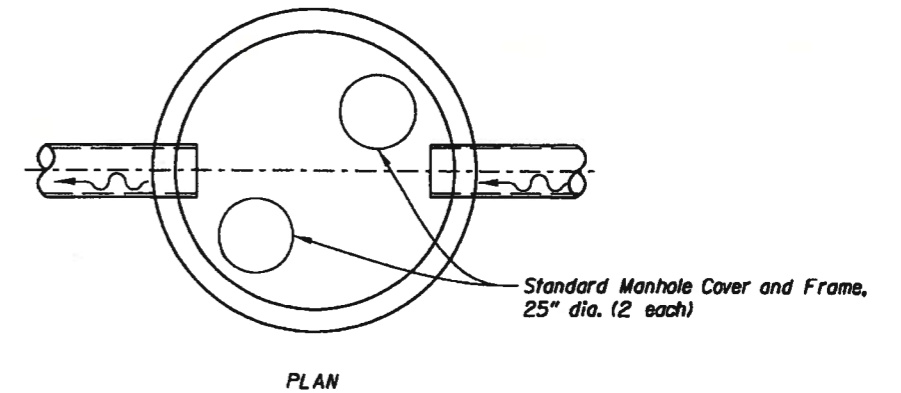
PRECAST CONCRETE GRADE CONTROL
Not to Scale



<p>OREGON DEPARTMENT OF TRANSPORTATION</p>	
<p>Otak Inc. HennelGlobal Partner</p>	<p>808 SW Third Avenue, Suite 300 Portland, Oregon 97204 Phone: (503)287-8825 Fax: (503)415-2304</p>
<p>FFO-US20 PME: UPRR - EDDYVILLE (PHASE 4) SECTION CORVALLIS - NEWPORT HIGHWAY LINCOLN COUNTY</p>	
<p>Design Team Leader - Melanie McCandless Designed By - Tammi Connolly Drafted By - Sadie Reiter</p>	
<p>WATER QUALITY SWALE DETAILS</p>	<p>SHEET NO. GJ-22</p>

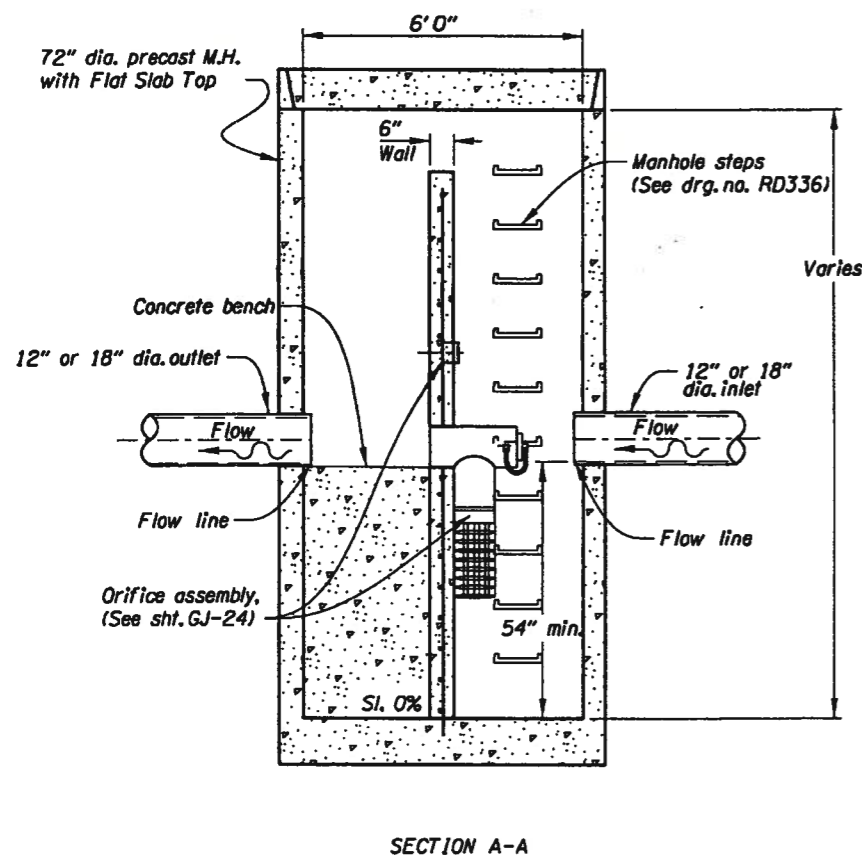


Facility	Orifice 1 F.L.	Orifice 1 Dia. (in.)	Orifice 2 F.L.	Orifice 2 Dia. (in.)	Weir 1 F.L.	Weir 2 F.L.	Weir 3 F.L.	A (ft.)	B (ft.)
D00956	31.40	2.00	n/a	n/a	34.70	35.32	35.75	0.7	2
D00957	34.10	0.70	37.13	3.70	38.68	n/a	39.41	0.8	n/a
D00958	44.45	0.50	45.53	1.90	46.37	n/a	46.70	0.6	n/a
D00959	49.25	3.70	50.38	6.80	51.82	n/a	52.97	1.0	n/a

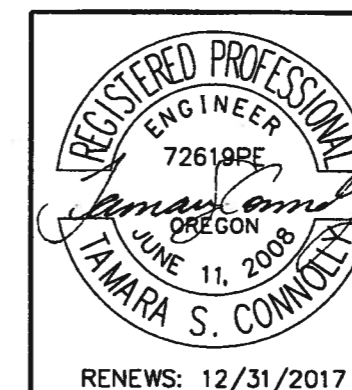
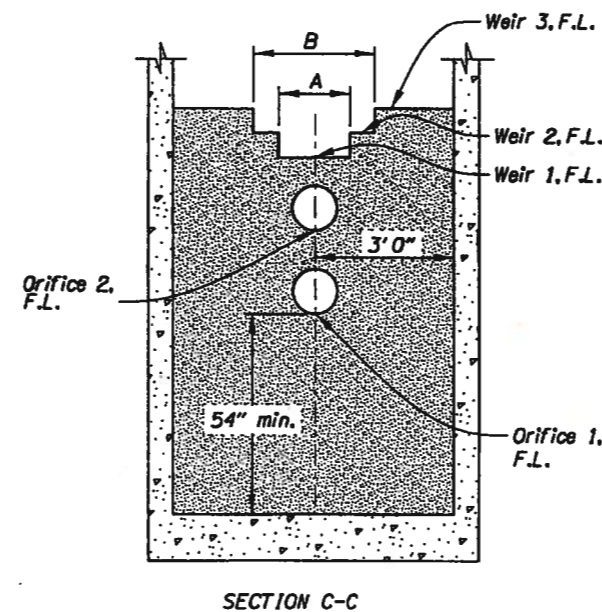


MANHOLE TOP SLAB
Not to Scale

- NOTES:
- All bars shall be placed 2" clear of the nearest face of concrete unless shown otherwise.
 - For details not shown, see std drg. no. RD335.
 - Weir connection to pre-cast manhole base and walls to include embedding #5 bars into base/wall half way, seal joint with epoxy.



FLOW CONTROL MANHOLE
Not to Scale



OREGON DEPARTMENT OF TRANSPORTATION

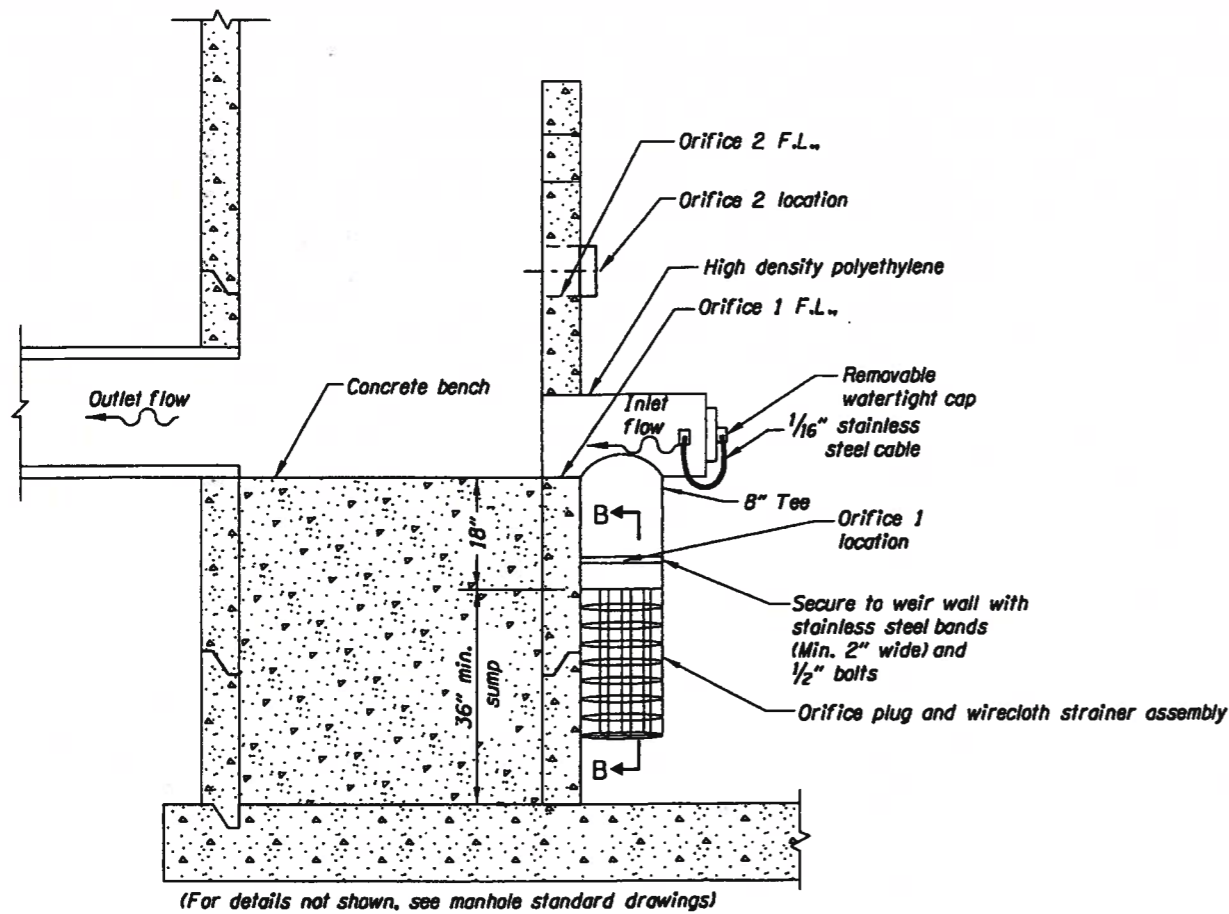
Otak Inc. 806 SW Third Avenue, Suite 300
Portland, Oregon 97204
Phone: (503)287-6825 Fax: (503)415-2304

FFO-US20 PME: UPRR - EDDYVILLE (PHASE 4) SECTION
CORVALLIS - NEWPORT HIGHWAY
LINCOLN COUNTY

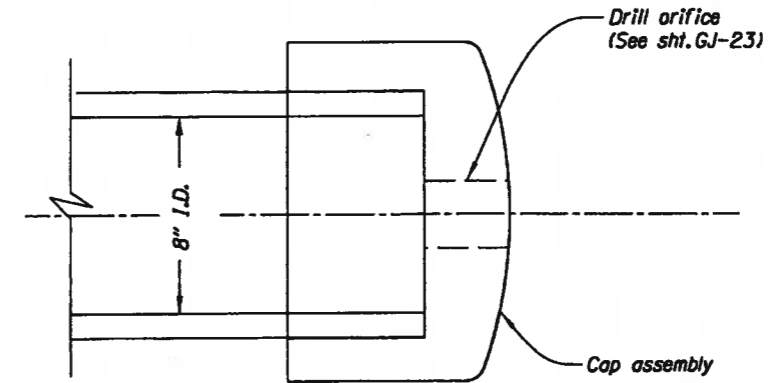
Design Team Leader - Melanie McCandless
Designed By - Tammi Connolly
Drafted By - Sadie Reiter

WATER QUALITY SWALE DETAILS

SHEET NO. **GJ-23**



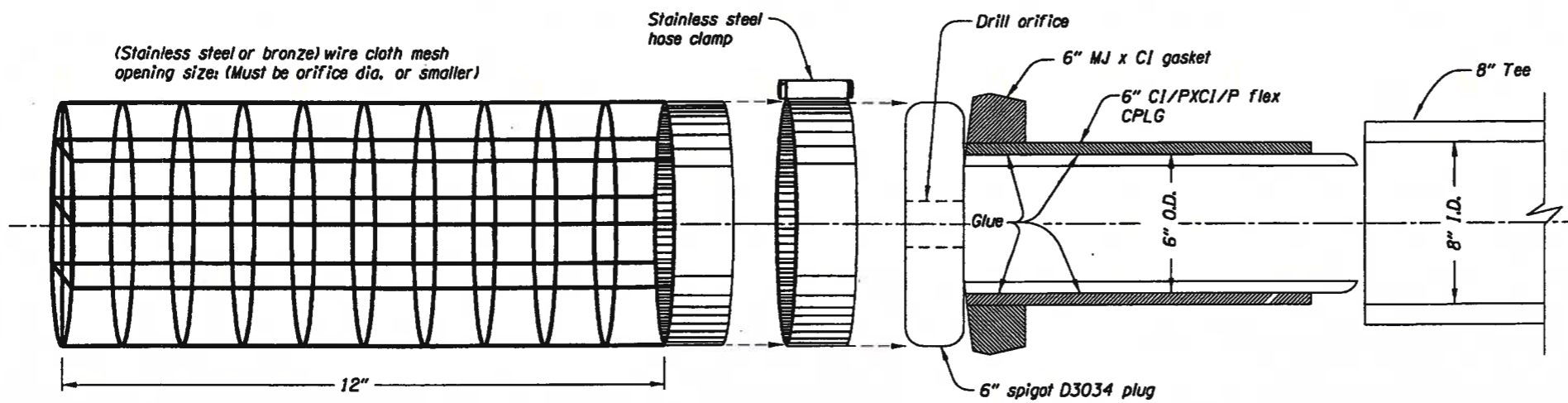
PARTIAL SECTION (Sht.GJ-23)
ORIFICE 1 ASSEMBLY



ORIFICE PLUG
ORIFICE 2 ASSEMBLY

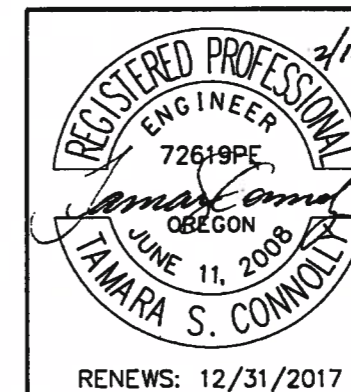
GENERAL NOTES FOR ALL DETAILS:

1. Hardware, fasteners and anchors to be stainless steel.
2. See pipe data sheet and plan sheets for pipe size(s).
3. See pipe data sheet and plan sheets for manhole size(s).
4. See pipe data sheet and plan sheets for sump depth.
5. Manhole and pipe connection details per manhole standard drawings.

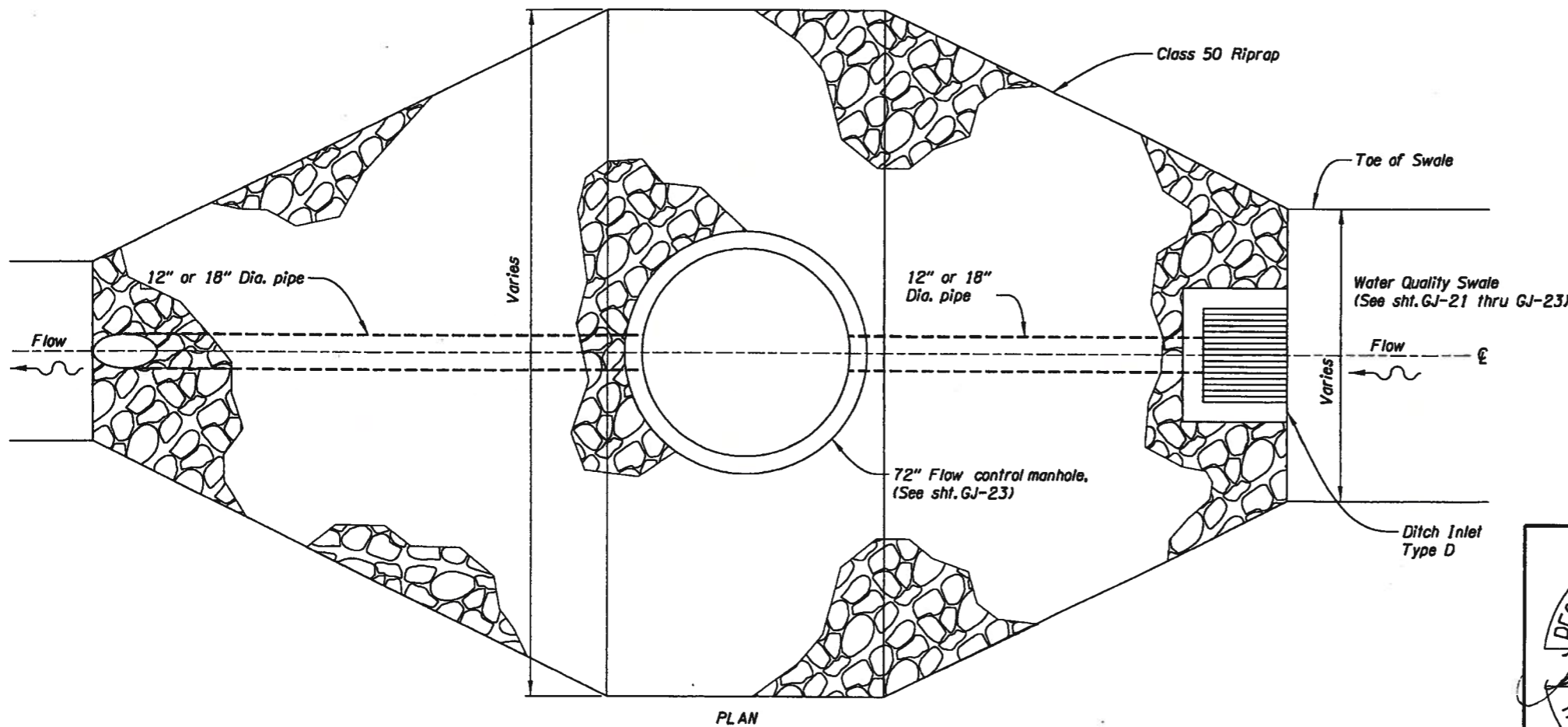
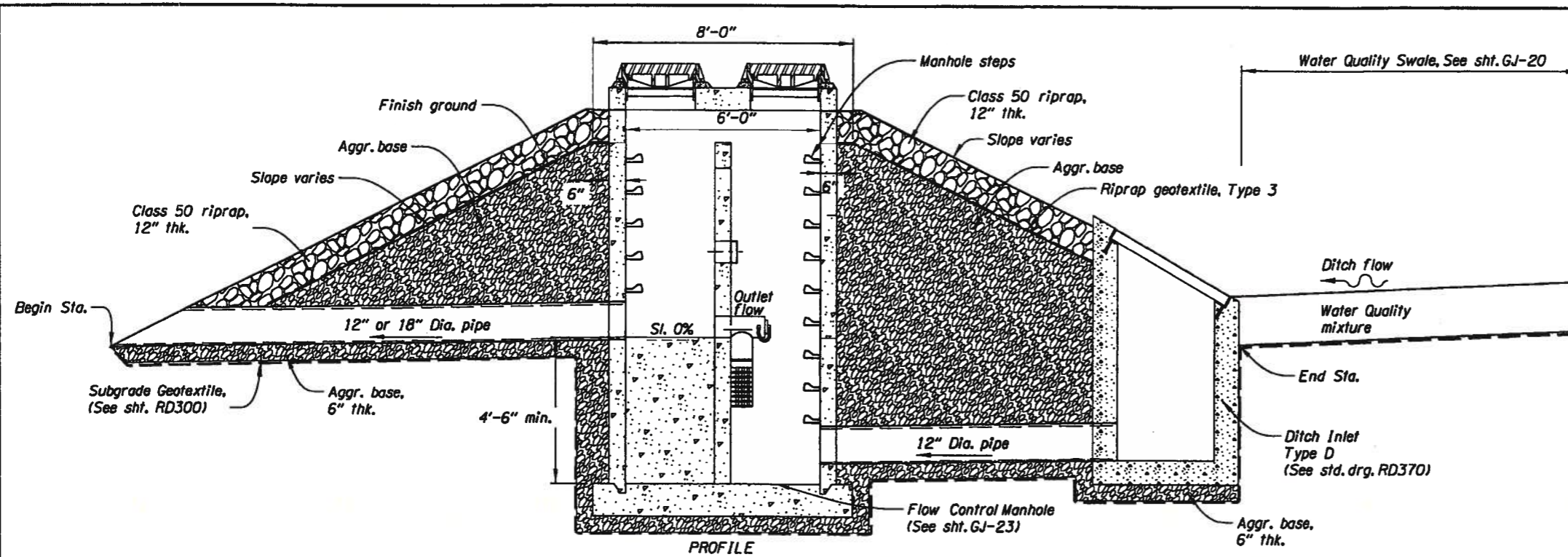


ORIFICE 1 ASSEMBLY
SECTION B-B

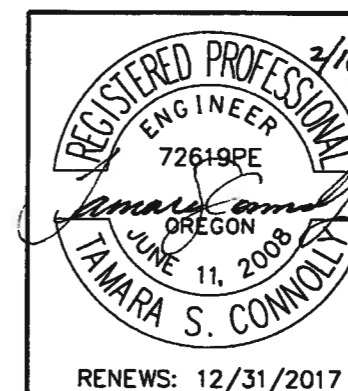
FLOW CONTROL MANHOLE
Not to Scale



OREGON DEPARTMENT OF TRANSPORTATION	
Otak Inc. HammiGlobal Partner	808 SW Third Avenue, Suite 300 Portland, Oregon 97204 Phone: (503)287-8825 Fax: (503)415-2304
FFO-US20 PME: UPRR - EDDYVILLE (PHASE 4) SECTION CORVALLIS - NEWPORT HIGHWAY LINCOLN COUNTY	
Design Team Leader - Melanie McCandless Designed By - Jeremy Tamargo Drafted By - Sadie Reiter	
WATER QUALITY SWALE DETAILS	SHEET NO. GJ-24



FLOW CONTROL BERM
Not to Scale



OREGON DEPARTMENT OF TRANSPORTATION	
Otak Inc. HanmiGlobal Partner	808 SW Third Avenue, Suite 300 Portland, Oregon 97204 Phone: (503)287-6825 Fax: (503)415-2304
FFO-US20 PME: UPRR - EDDYVILLE (PHASE 4) SECTION CORVALLIS - NEWPORT HIGHWAY LINCOLN COUNTY	
Design Team Leader - Melanie McCandless Designed By - Jeremy Tomargo Drafted By - Sadie Reiter	
WATER QUALITY SWALE DETAILS	SHEET NO. GJ-25