

OPERATION & MAINTENANCE MANUAL

DFI No. : D00537

Facility Type: Water Quality Filter Strip



July, 2012

INDEX

1. IDENTIFICATION..... 1

2. FACILITY CONTACT INFORMATION 1

3. CONSTRUCTION..... 1

4. FACILITY OVERVIEW AND OPERATIONS 2

5. FACILITY HAZ MAT SPILL FEATURE(S)..... 3

6. AUXILIARY OUTLET (HIGH FLOW BYPASS)..... 3

7. MAINTENANCE REQUIREMENTS..... 3

8. WASTE MATERIAL HANDLING..... 4

APPENDIX A:.....Operational Plan Drawing

APPENDIX B:.....Project Construciton Plans

1. Identification

Drainage Facility ID (DFI): **D00537**
Facility Type: Water Quality Filter Strip
Construction Drawings: (V-File Number) 52V-104
Location: District: 3
Highway No.: 157
Mile Post: [0.46; 0.5 (beg./end)]
Description: This facility is located southwest of the Wallace Bridge over the Yamhill River and adjacent to the Willamina-Sheridan highway

2. Facility Contact Information

Contact the Engineer of Record, Region Technical Center, or Geo-Environmental's Senior Hydraulics Engineer for:

- Operational clarification
- Maintenance clarification
- Repair or restoration assistance

Engineering Contacts:

Region Technical Center Hydro Unit Manager

Or

Geo-Environmental Senior Hydraulics Engineer (503) 986-3365.

3. Construction

Engineer of Record: ODOT Designer – Region 2 Tech. Center,
Chris Carman, (503) 986-2691

Facility construction: 2011
Contractor: ODOT Bridge Maintenance

4. Facility Overview and Operations

This water quality filter strip is an undisturbed grass area used to treat stormwater runoff from the Wallace Bridge prior to entering the Yamhill River. A filter strip is a common method of treating stormwater runoff. It relies on maintaining sheet flow across vegetated and permeable ground which maximizes stormwater contact with soil and vegetation. The filter strip must remain vegetated in the future.

An asphalt curb(not shown) channels runoff from the bridge to the upland portion of the filter strip.



Photo 1: Water Quality filter strip. Willamina – Sheridan Highway is to the right.

- A. Maintenance equipment access:
Access to the filter strip is from the Willamina - Sheridan Highway.
- B. Heavy equipment access into facility:
 - Allowed (no limitations)
 - Allowed (with limitations)
 - Not allowed

C. Special Features:

- Amended Soils
- Porous Pavers
- Liners
- Underdrains

5. Facility Haz Mat Spill Feature(s)

A filter strip cannot accommodate storage of liquid hazardous materials.

6. Auxiliary Outlet (High Flow Bypass)

There is no auxiliary outlet. All flows will drain along the filter strip and into the Yamhill River.

7. Maintenance Requirements

Routine maintenance table for non-proprietary stormwater treatment and storage/detention facilities have been incorporated into ODOT's Maintenance Guide. These tables summarize the maintenance requirements for ponds, swales, filter strips, bioslopes, and detention tanks and vaults. Special maintenance requirements in addition to the routine requirements are noted below when applicable.

The ODOT Maintenance Guide can be viewed at the following website:

<http://www.oregon.gov/ODOT/HWY/OOM/MGuide.shtml>

The following stormwater facility maintenance table (See ODOT Maintenance Guide) should be used to maintain the facility outlined in this Operation and Maintenance Manual or follow the Maintenance requirements outlined in Appendix C when proprietary structure is selected below:

- Table 1 (general maintenance)
- Table 2 (stormwater ponds)
- Table 3 (water quality biofiltration swales)
- Table 4 (water quality filter strips)
- Table 5 (water quality bioslopes)
- Table 6 (detention tank)
- Table 7 (detention vault)
- Appendix C (proprietary structure)
- Special Maintenance requirements:

8. Waste Material Handling

Material removed from the facility is defined as waste by DEQ. Refer to the roadwaste section of the ODOT Maintenance Yard Environmental Management System (EMS) Policy and Procedures Manual for disposal options: <http://egov.oregon.gov/ODOT/HWY/OOM/EMS.shtml>

Contact any of the following for more detailed information about management of waste materials found on site:

ODOT Clean Water Unit	(503) 986-3008
ODOT Statewide Hazmat Coordinator	(503) 229-5129
ODOT Region Hazmat Coordinator	(503) 986-2647
ODEQ Northwest Region Office	(503) 229-5263

Appendix A – Site Specific Operational Plan

Contents:

Operational Plan: DFI D00537



① Install stormwater facility marker
(See dwg. RD399)

REGISTERED PROFESSIONAL ENGINEER
17,807
Chris Carman Aug 22 2019 10:49 AM
OREGON
JULY 25, 1995
CHRIS CARMAN

OREGON DEPARTMENT OF TRANSPORTATION

DISTRICT 3 STORMWATER RETROFIT
WILLAMINA - SHERIDAN HIGHWAY
POLK COUNTY

Designer: Chris Carman Reviewer: N/A
Drafter: Sergy Chernishoff Checker: -

STORMWATER

SHEET NO. HA02

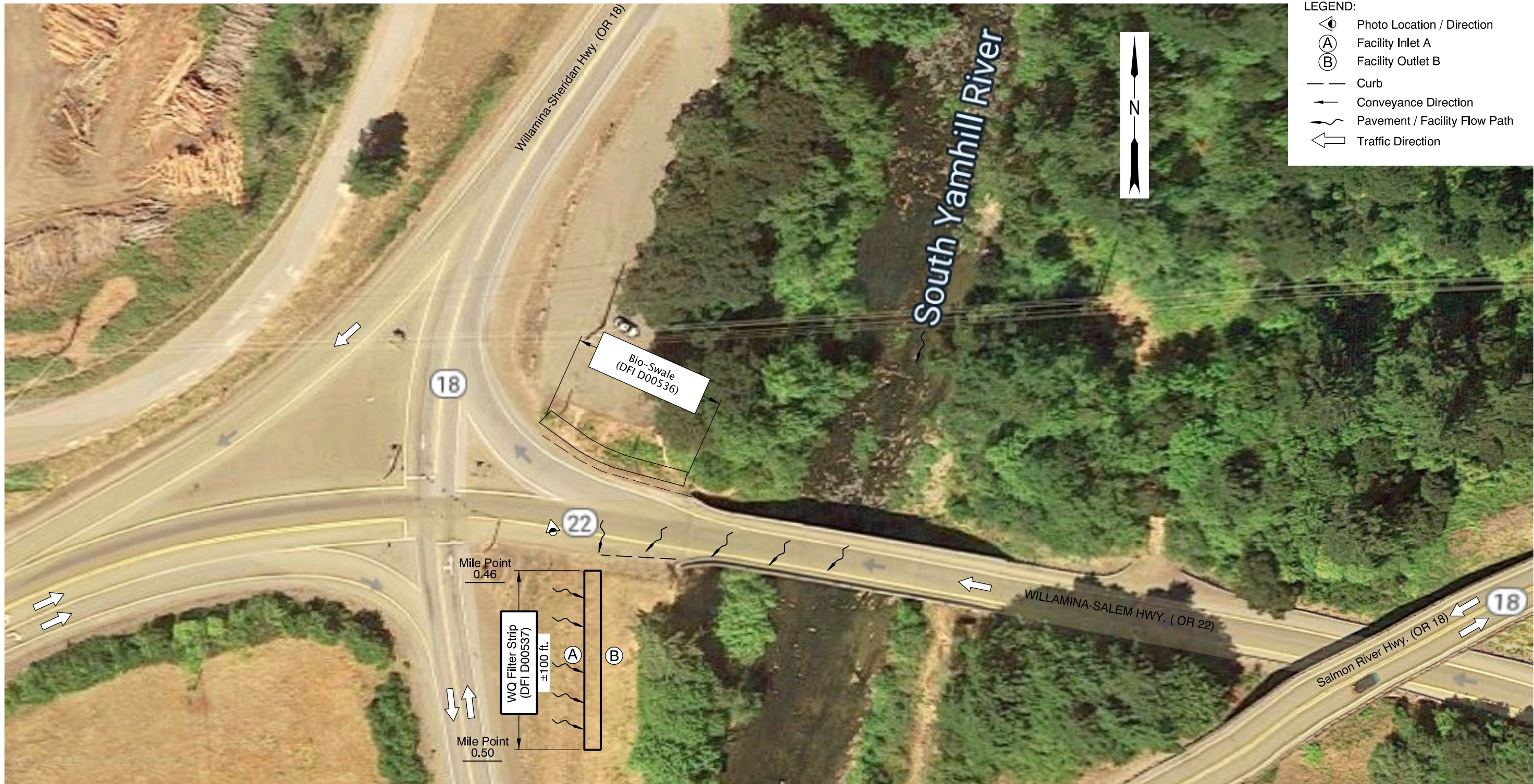
HWY: 157
M.P.: 0.46-0.50
UNIT FILE CODE
N/A
DF/TSSU NO.
D00537

RENEWS: 12-31-2019
FINAL ELECTRONIC DOCUMENT
AVAILABLE UPON REQUEST

Appendix B – Project Contract Plans

Contents:

Site Specific Subset of Project Contract Plan 52V-104



- LEGEND:
- Photo Location / Direction
 - Facility Inlet A
 - Facility Outlet B
 - Curb
 - Conveyance Direction
 - Pavement / Facility Flow Path
 - Traffic Direction



Prepared By:
Chris Carman

Drafted By:
Sergiy Chernishoff

DFI D00537
MAINTENANCE DISTRICT 3 HWY 157
WATER QUALITY FILTER STRIP
 WILLAMINA-SHERIDAN HIGHWAY MP 0.46 - 0.50
 POLK COUNTY