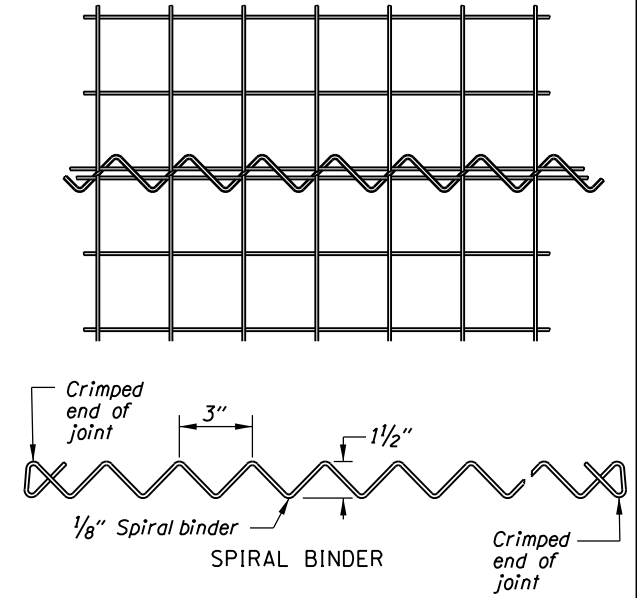
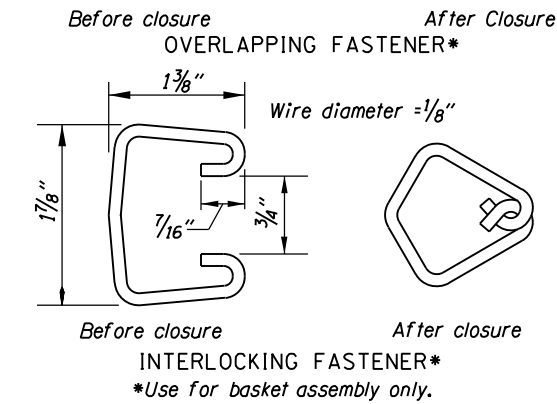
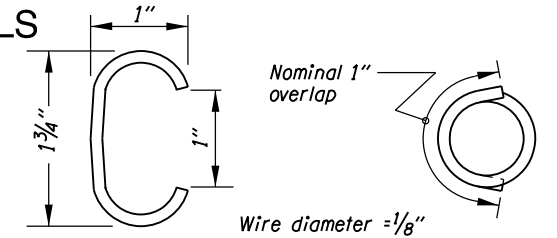
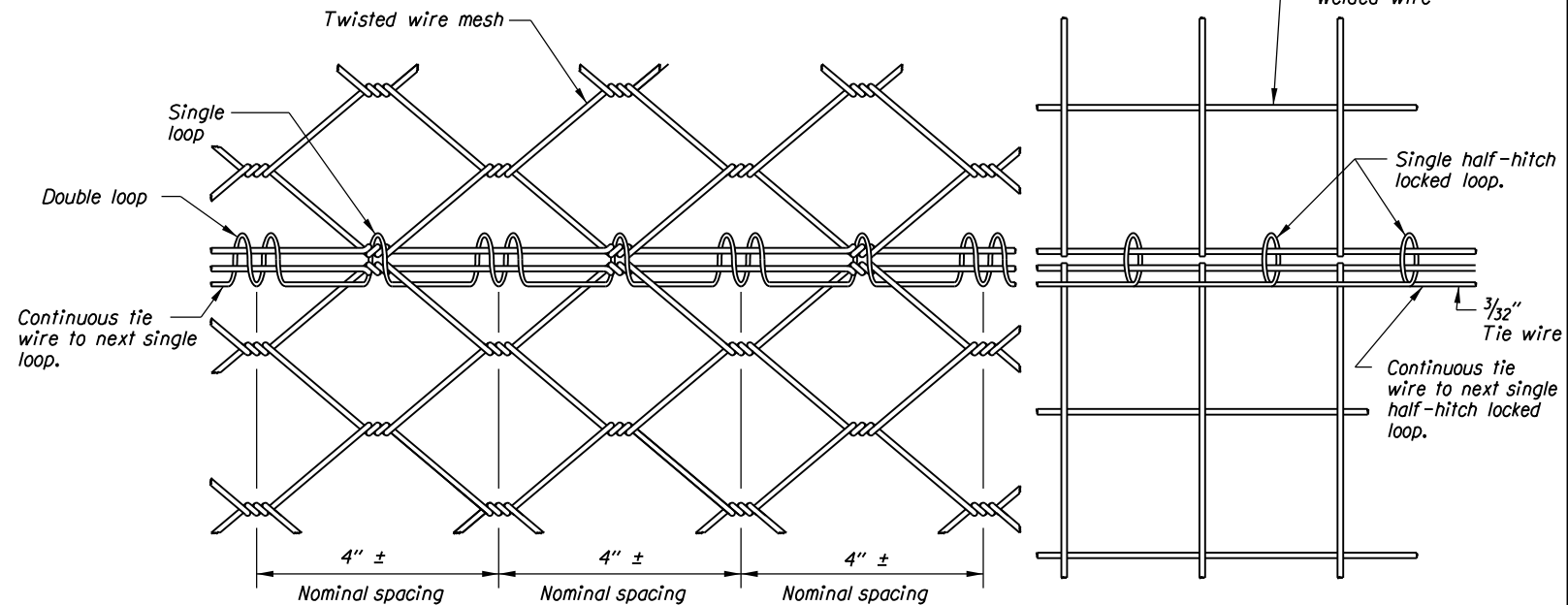


det2000.dgn 2-10-2010

GABION RETAINING WALL DETAILS



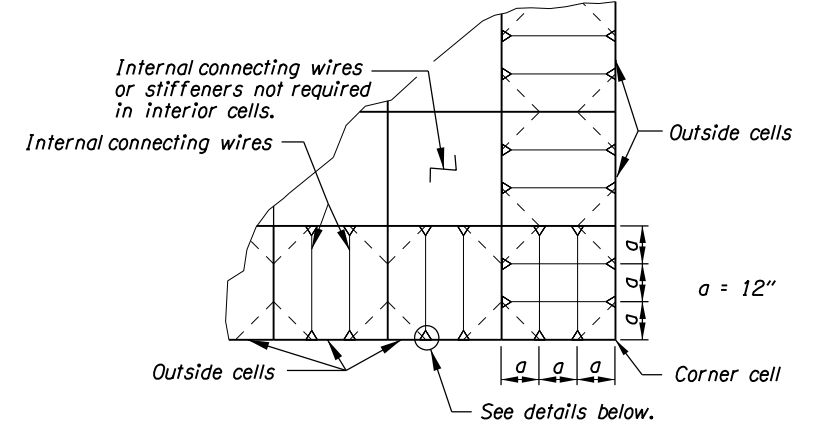
ALTERNATE GABION JOINT FASTENERS (FASTENER DIMENSIONS NOMINAL)



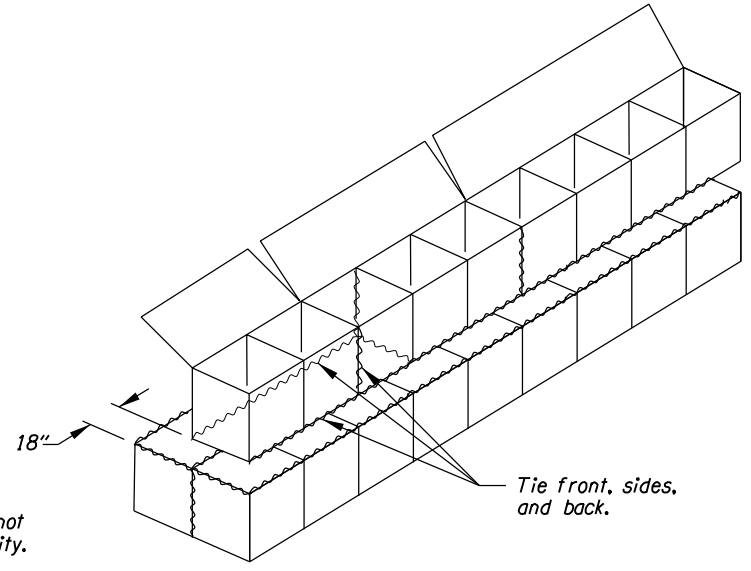
STANDARD 3/32" TIE WIRE DETAIL

The selection and use of this detail, while designed in accordance with generally accepted engineering principles and practices, is the sole responsibility of the user and should not be used without consulting a Registered Professional Engineer.

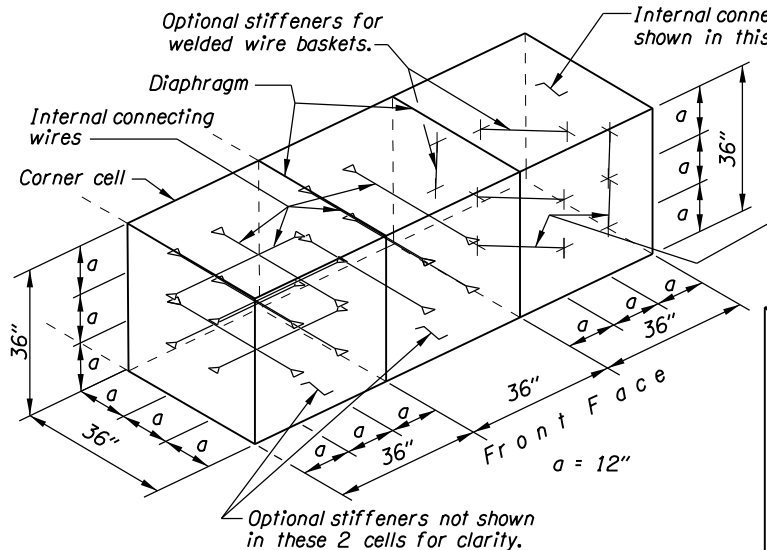
OREGON DEPARTMENT OF TRANSPORTATION TECHNICAL SERVICES DETAILS	
GABION RETAINING WALL DETAILS	DETAIL NO. DET2000



TYPICAL PLAN FOR INTERNAL CONNECTING WIRES



GABION BASKET TYING DETAIL (For tying purposes only. See Dwg. No. _____ for geometric requirements.)

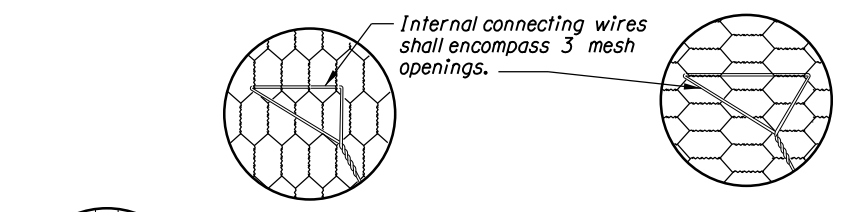


INTERNAL CONNECTING WIRES

Two rows of stiffeners (4 per cell) are required on front face. A single row (mid level) is required on back face (2 per cell).

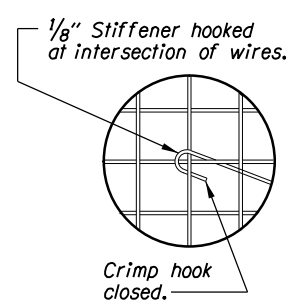
Office practice note:
(Do not include on contract drawing)

- This is not a standard drawing.
- These are standard gabion details required by ODOT.
- Include this sheet in the contract plans if gabions are included as an acceptable retaining wall option.



TWISTED WIRE BASKETS

WELDED WIRE BASKETS



OPTIONAL STIFFENER CONNECTION FOR WELDED WIRE GABION BASKETS

DET 2000